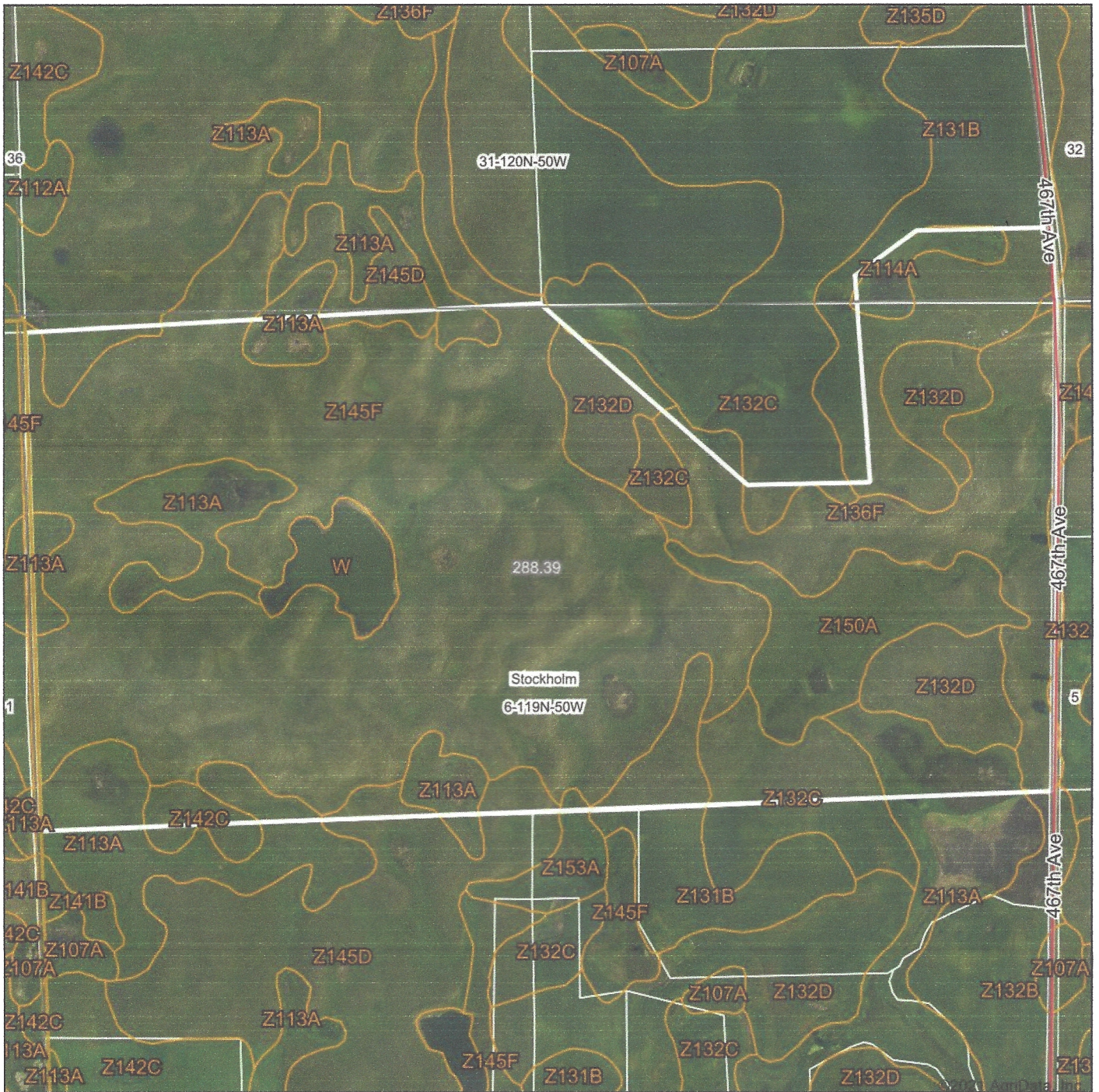
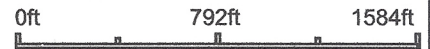


# Aerial Map



Map Center: 45° 8' 48.62, -96° 52' 24.03



**6-119N-50W**  
**Grant County**  
**South Dakota**



10/11/2021

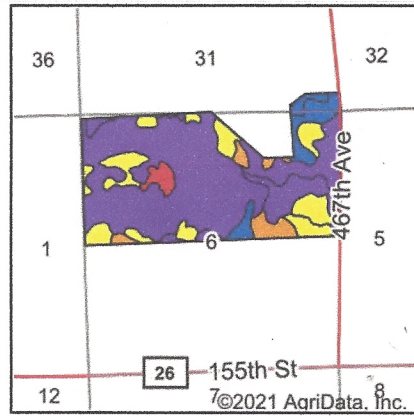
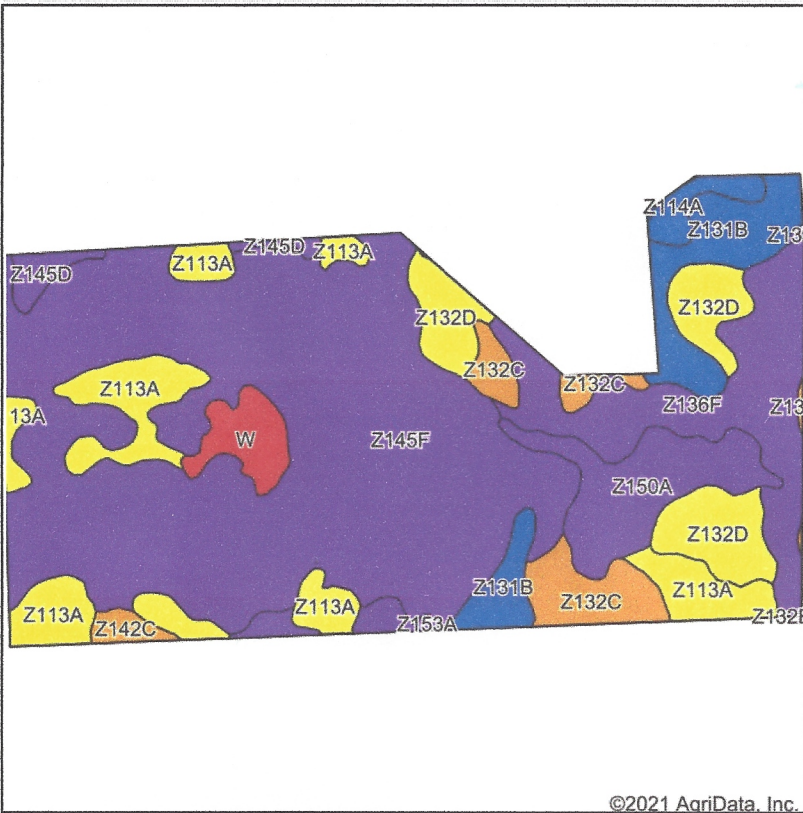
Maps Provided By:



© AgriData, Inc. 2021 www.AgriDataInc.com

Field borders provided by Farm Service Agency as of 5/21/2008.

# Soils Map



State: **South Dakota**  
 County: **Grant**  
 Location: **6-119N-50W**  
 Township: **Stockholm**  
 Acres: **288.39**  
 Date: **10/11/2021**

©2021 AgriData, Inc.

Maps Provided By:



Soils data provided by USDA and NRCS.

Area Symbol: SD051, Soil Area Version: 22

Code	Soil Description	Acres	Percent of field	Non-Irr Class Legend	Non-Irr Class *c	Productivity Index	*n NCCPI Soybeans
Z145F	Buse-Barnes loams, coteau, 9 to 40 percent slopes, very stony	144.20	50.0%		Vlls	6	21
Z136F	Buse-Langhei complex, 9 to 40 percent slopes, very stony	29.86	10.4%		Vlls	7	13
Z113A	Vallers-Parnell complex, coteau, 0 to 2 percent slopes	29.62	10.3%		IVw	43	31
Z132D	Forman-Buse-Aastad loams, coteau, 2 to 15 percent slopes	19.80	6.9%		IVe	52	52
Z131B	Forman-Aastad loams, coteau, 1 to 6 percent slopes	17.28	6.0%		Ile	83	58
Z150A	Rauville silty clay loam, coteau, 0 to 1 percent slopes, frequently flooded	16.77	5.8%		Vw	23	9
Z132C	Forman-Buse-Aastad loams, coteau, 2 to 9 percent slopes	12.39	4.3%		Ille	64	56
Z145D	Buse-Barnes loams, coteau, 2 to 15 percent slopes, very stony	6.31	2.2%		Vlls	9	38
W	Water	6.24	2.2%		VIII	0	
Z114A	Hamerly-Tonka complex, coteau, 0 to 2 percent slopes	3.48	1.2%		Ils	66	54
Z142C	Barnes-Buse-Svea loams, coteau, 2 to 9 percent slopes	1.99	0.7%		Ille	63	57
Z153A	Lamoure-Rauville silty clay loams, channeled, 0 to 2 percent slopes, frequently flooded	0.27	0.1%		VIw	13	18
Z137F	Buse-Forman loams, 15-40 percent slopes, very stony	0.18	0.1%		Vlls	6	21
<b>Weighted Average</b>					<b>5.83</b>	<b>22.2</b>	<b>*n 26.9</b>

\*n: The aggregation method is "Weighted Average using all components"

\*c: Using Capabilities Class Dominant Condition Aggregation Method

Soils data provided by USDA and NRCS.