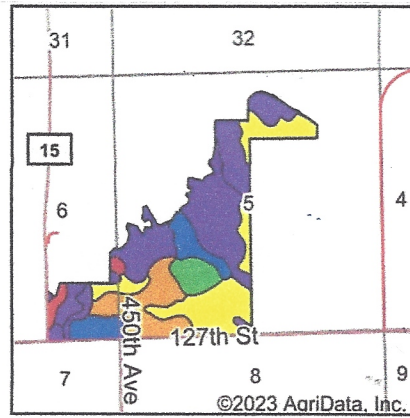
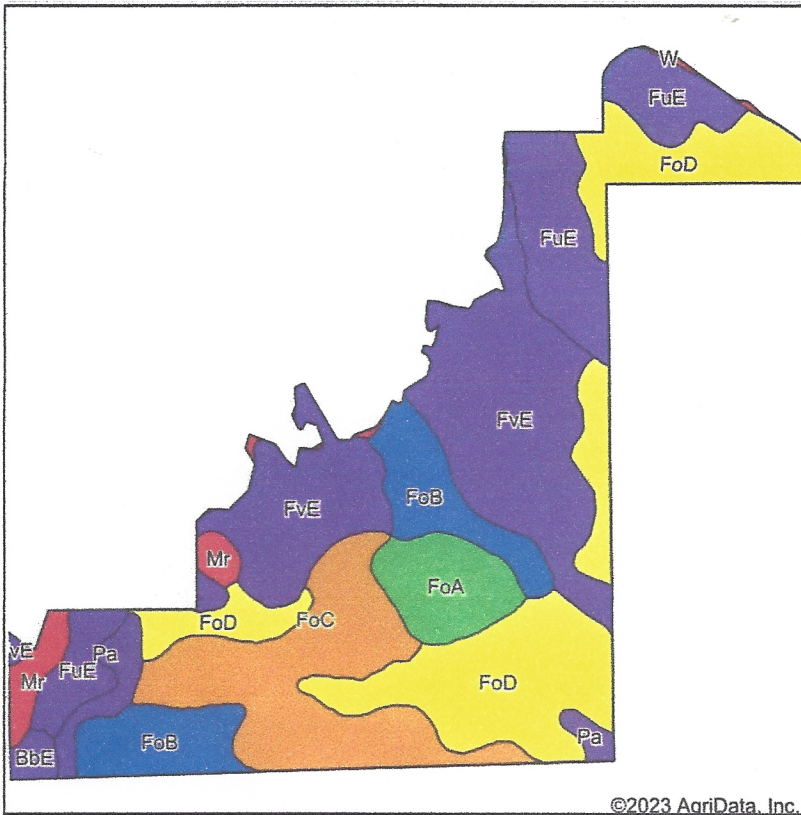


Soils Map



State: **South Dakota**
 County: **Roberts**
 Location: **5-124N-52W**
 Township: **One Road**
 Acres: **236.39**
 Date: **12/27/2023**



Soils data provided by USDA and NRCS.

©2023 AgriData, Inc.

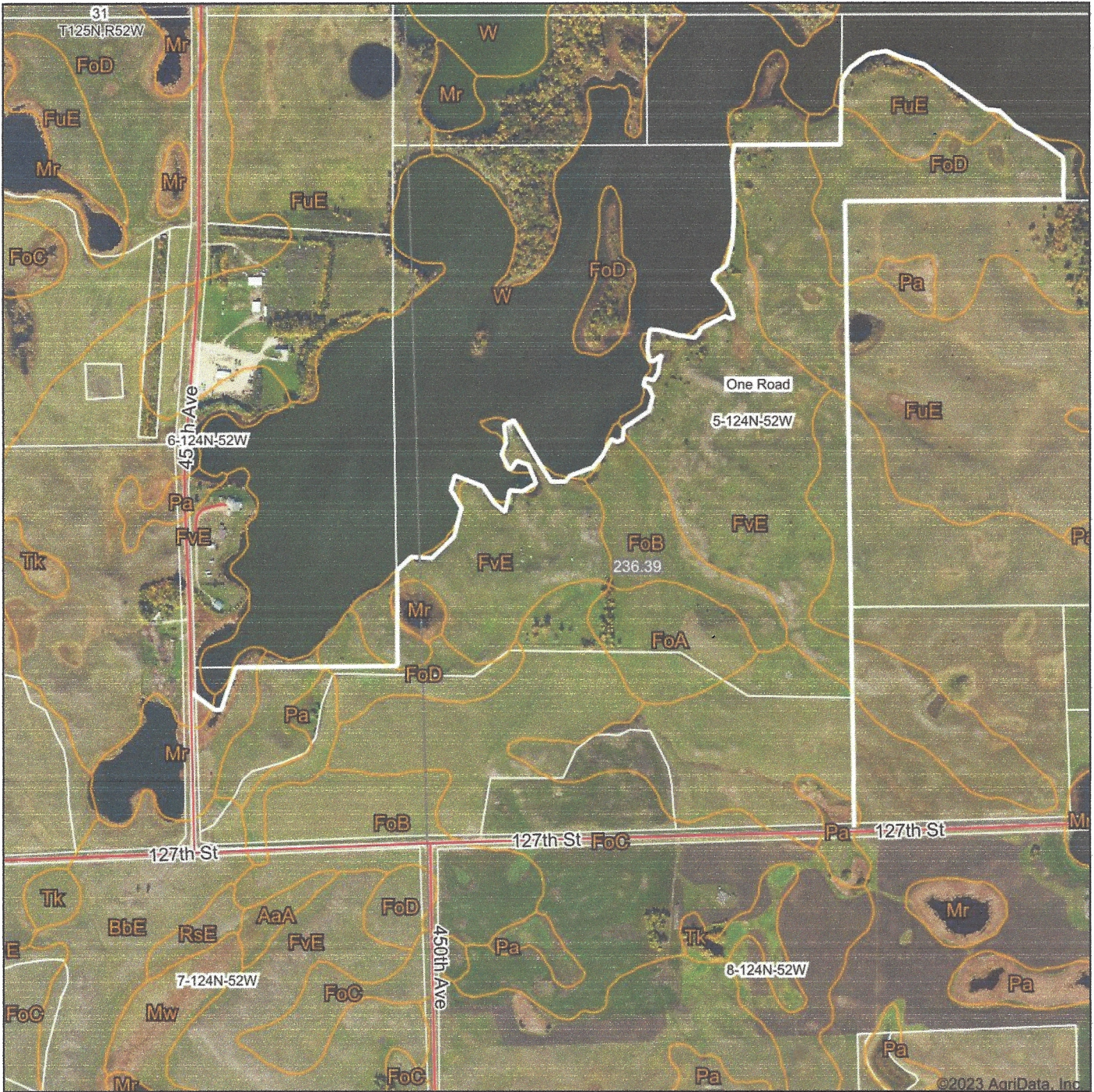
Area Symbol: SD109, Soil Area Version: 24

Code	Soil Description	Acres	Percent of field	Non-Irr Class Legend	Non-Irr Class *c	Productivity Index	Alfalfa hay Tons	Corn Bu	Soybeans Bu	Spring wheat Bu	Winter wheat Bu	*n NCCPI Soybeans	
FvE	Forman-Buse stony complex, 9 to 40 percent slopes	60.83	25.7%		Vlls	25	1.1	17	7	10	11	27	
FoD	Forman-Aastad loams, 9 to 15 percent slopes	57.00	24.1%		Ive	56	2.6	58	22	28	31	50	
FoC	Forman-Aastad loams, 6 to 9 percent slopes	37.29	15.8%		llle	69	2.9	69	26	33	35	53	
FuE	Forman-Buse loams, 15 to 25 percent slopes	30.54	12.9%		Vle	29	1.5	22	8	13	14	42	
FoB	Forman-Aastad loams, 2 to 6 percent slopes	23.17	9.8%		lle	82	3.2	79	30	37	40	55	
FoA	Forman-Aastad loams, 0 to 2 percent slopes	12.46	5.3%		ls	87	3.2	84	32	39	42	56	
Pa	Parnell silty clay loam	6.27	2.7%		Vw	31		29	11	4	1	8	
Mr	Southam silty clay loam, 0 to 1 percent slopes	5.88	2.5%		Vllw	10						9	
BbE	Barnes-Buse, complex, 9 to 40 percent slopes, stony	2.02	0.9%		Vlls	12						38	
W	Water	0.93	0.4%		Vlll	0							
Weighted Average						4.69	48.4	2	45	17.2	22	23.8	*n 41.9

*n: The aggregation method is "Weighted Average using all components"

*c: Using Capabilities Class Dominant Condition Aggregation Method

Aerial Map



Boundary Center: 45° 33' 2.02, -97° 12' 4.72

0ft 957ft 1914ft

5-124N-52W
Roberts County
South Dakota



12/27/2023

Maps Provided By:



© AgriData, Inc. 2023 www.AgridataInc.com

Field borders provided by Farm Service Agency as of 5/21/2008.