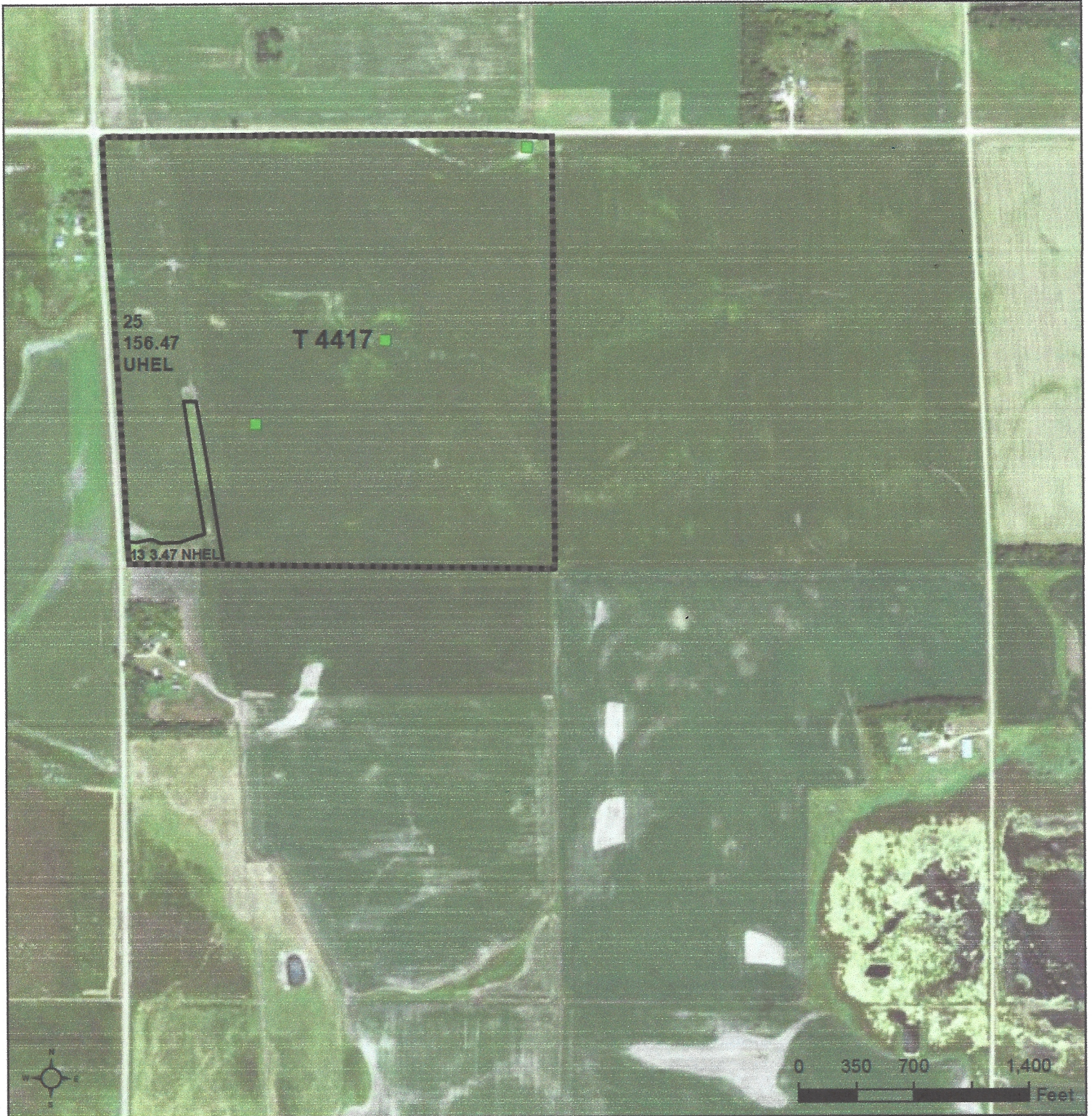




United States  
Department of  
Agriculture

# Hamlin County, South Dakota



### Common Land Unit

PLSS

- Cropland
- Tract Boundary

### Wetland Determination Identifiers

- Restricted Use
- Limited Restrictions
- Exempt from Conservation
- Compliance Provisions

Unless otherwise noted,  
crops listed below are  
Non-irrigated  
Intended for Grain  
Corn = Yellow  
Soybeans = Common  
Wheat - HRS or HRW  
Sunflowers = Oil or Non

Producer initial  
Date

2023 Program Year

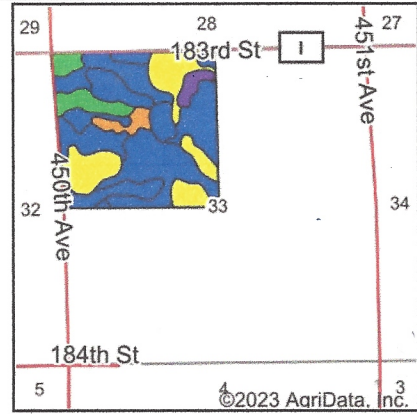
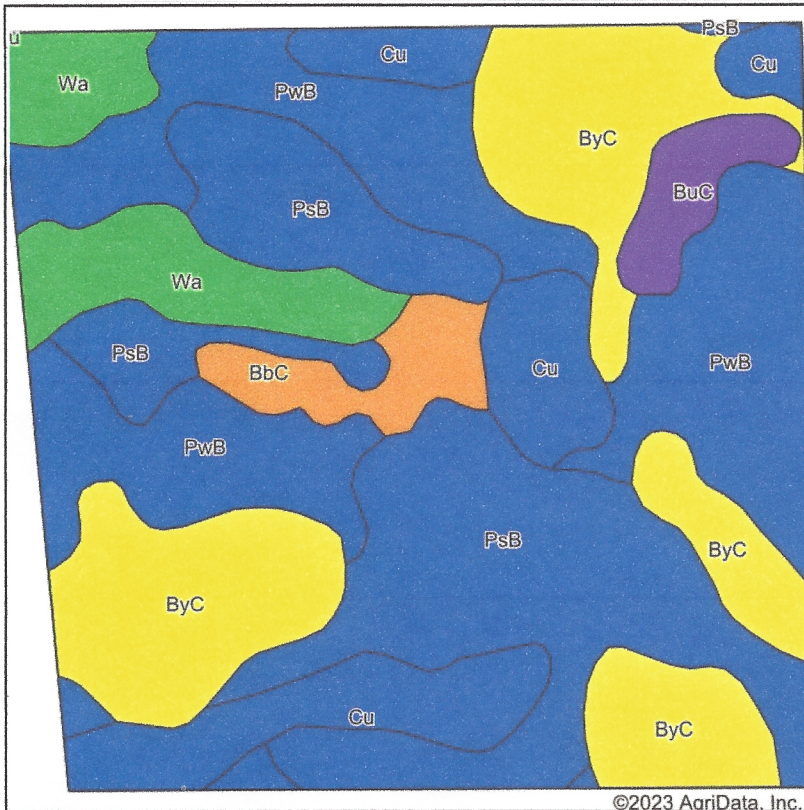
Map Created March 27, 2023

**Farm 5694**

**33-115N-53W-Hamlin**

United States Department of Agriculture (USDA) Farm Service Agency (FSA) maps are for FSA Program administration only. This map does not represent a legal survey or reflect actual ownership; rather it depicts the information provided directly from the producer and/or National Agricultural Imagery Program (NAIP) imagery. The producer accepts the data 'as is' and assumes all risks associated with its use. USDA-FSA assumes no responsibility for actual or consequential damage incurred as a result of any user's reliance on this data outside FSA Programs. Wetland identifiers do not represent the size, shape, or specific determination of the area. Refer to your original determination (CPA-026 and attached maps) for exact boundaries and determinations or contact USDA Natural Resources Conservation Service (NRCS).

# Soils Map



State: **South Dakota**  
 County: **Hamlin**  
 Location: **33-115N-53W**  
 Township: **Oxford**  
 Acres: **161.59**  
 Date: **12/13/2023**







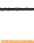
Maps Provided By:  
  
 CUSTOMIZED ONLINE MAPPING  
 © AgriData, Inc. 2023 www.AgriDataInc.com



Soils data provided by USDA and NRCS.

©2023 AgriData, Inc.

Area Symbol: SD057, Soil Area Version: 25

Code	Soil Description	Acres	Percent of field	Non-Irr Class Legend	Non-Irr Class *c	Productivity Index	Alfalfa hay Tons	Corn Bu	Soybeans Bu	Spring wheat Bu	Winter wheat Bu	*n NCCPI Soybeans
PsB	Poinsett-Buse-Waubay complex, 1 to 6 percent slopes	42.33	26.2%		Ile	81						67
PwB	Poinsett-Waubay silty clay loams, 1 to 6 percent slopes	41.47	25.7%		Ile	89						72
ByC	Buse-Poinsett complex, 6 to 9 percent slopes	36.91	22.8%		IVe	66	2.5	59	21	28	31	51
Cu	Cubden-Badger silty clay loams, coteau, 0 to 2 percent slopes	18.56	11.5%		IIs	81						54
Wa	Waubay silty clay loam, 0 to 2 percent slopes	12.60	7.8%		Iw	98						80
BbC	Barnes-Buse loams, 6 to 9 percent slopes	5.66	3.5%		IIle	60						62
BuC	Buse-Barnes loams, 2 to 15 percent slopes, very stony	4.06	2.5%		VIIIs	10						36
<b>Weighted Average</b>					<b>2.54</b>	<b>78.4</b>	<b>0.6</b>	<b>13.5</b>	<b>4.8</b>	<b>6.4</b>	<b>7.1</b>	<b>*n 63.2</b>

\*n: The aggregation method is "Weighted Average using all components"

\*c: Using Capabilities Class Dominant Condition Aggregation Method

Soils data provided by USDA and NRCS.