



Bruin Finance Society

Information Session

Winter Quarter 2026 | January 12, 2026



Keep an eye
out for the
password!



MEET OUR OFFICERS



Co-President : Nalin Jayaswal



Co-President: Francisco Mena



External VP: Isabella Green



Internal VP: Melody Xu

MEET OUR OFFICERS



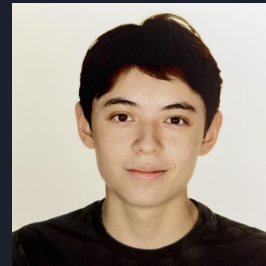
Bruin Finance Journal:
Sahil Sudhani & Ansh Purohit



Internal Strategy: Eva Eygi



Prof. Outreach: Maxwell Short



Recruitment: Felix Schmid



MEET OUR OFFICERS



Social Media: Lauren de Bruijn



Development: Ernesto Torres



Families: Tigran Karapetyan



Digital Operations: Anika Lala



MEET OUR OFFICERS



Socials: Stas Ofitserov



Socials: Saanya Malhotra



Educ. Events: Jennifer Lee



Funding: Mark Brown



Overview

Our Mission

- Bruin Finance Society (BFS) empowers UCLA students with the skills, knowledge, and connections needed to navigate the finance industry
- BFS is dedicated to helping students develop technical and professional skills, connect with industry mentors, and prepare for competitive careers
- BFS strives to make finance accessible for **everyone**





Overview

What We Do



Meetings



Socials



Events



Career
Resources

Benefits of BFS

- **Learn** about careers, clubs on campus, get resources
- **Network** with other students/professionals and make connections
- **Participate** in a business- and finance-oriented community
- **OPEN** to everyone regardless of year or major

Overview



What BFS Members Go On to Do

- **Internships/Full-Time:** Investment banking, MBB, Big 4, venture capital, startups, wealth management, etc.
- **Leadership outcomes:** Interns → Associates → Board → Exec
- **Skill outcomes:** Resume → Interviews → Confidence



Our Co-Pres Cisco grabbing lunch with KPMG managers!



Our Co-Pres Nalin at Google!



Meetings

Guest Speakers

- Industry experts/professionals
- UCLA club representatives
- Anderson MBAs

Workshops

- Resume Building
- Mock Interviews
- Case and Exam Practice
- Learn about careers
- Develop professional skills

KPMG



Merrill Lynch
Bank of America Corporation

Goldman Sachs

citi

JPMorganChase

BCG BOSTON CONSULTING GROUP

UCLA

Anderson
School of Management

BAIN & COMPANY



EY Parthenon

Morgan Stanley





Meetings





Workshop Series Program

101

- Industry basics
- Open to all!

102

- Crucial subtopic
- Extensive deep dive!

103

- Guest Speaker Panel

Quant

- Strategy and Analysis

Asset/Wealth Management

- Profiles and Portfolios

Past Series

- Investment Banking
- Consulting
- Entrepreneurship

Different each quarter!

- Sales & Trading
- Venture Capital
- Marketing
- Real Estate



Upcoming General Meetings

<u>Week</u>	<u>Meeting [Mondays at 6:30 PM]</u>
4	Families Olympics!!
5	Quant 101
6	Resume Workshop
8	Asset/Wealth Management 101
9	Cover Letter Workshop



Pacific Consulting Group

- Opportunity for members to participate in pro bono consulting for a start-up firm
- Prepare for case interviews and the management consulting recruiting process





Socials/Events





Socials/Events

3x/Quarter Socials!

- Dining Hall Runs
- K-Town
- The Grove
- Sawtelle
- Santa Monica
- Top Golf

Annual Retreats

- Big Bear/Mammoth
- Yosemite
- Joshua Tree
- Palm Springs
- San Diego





Resources

Substack Newsletter

[substack.com/
@bruinfinance](https://substack.com/@bruinfinance)



Sign up for weekly updates!



**Spring Applications NOW
OPEN- attend Monday's
Info Session to find...**

Dear BFS Community,
APR 4 • BRUIN FINANCE SOCIETY

INTERVIEW PREP GM TOMORROW 📅 + Further updates for Week 1

Dear BFS Community,
MAR 30 • BRUIN FINANCE SOCIETY

WEEK 10 GENERAL MEETING: STEM AND BUSINESS 📊💡🌱

Dear BFS members,
MAR 7 • BRUIN FINANCE SOCIETY

**[ACTION REQUIRED] TOMORROW(Friday): Boba Social + Exclusive
VC Speaker Event**

Dear BFS Community,
MAR 6 • BRUIN FINANCE SOCIETY

PERSONAL FINANCE GM TODAY, BOBA SOCIAL AND COOKIE SALE 🍪

Hello Bruin Finance Society members!
MAR 3 • BRUIN FINANCE SOCIETY

Weekly Newsletter!



Bruin Finance Society

[Home](#)

[Leadership](#)

[Newsletter](#)

[Recruitment](#)

[All Finance Calender](#)

[More](#) ▾

Bruin Finance Society

Breaking into Finance, the Bruin Way.

OUR MISSION



Bruin Finance Society Website!

**Head to
bruinfinancesociety.org
For all your needs in one click!**



Benefits

Professional

- Learn about career opportunities in multiple fields
- Develop professional skills

Community

- Make connections across professions
- Be part of a community through regular meetings and socials

Resources

- Learn about opportunities on campus through the All-Finance Calendar
- Access career resources from across UCLA through our website



Membership



General Membership

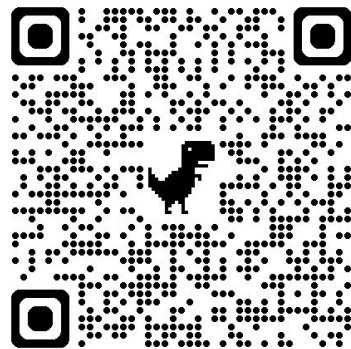
- Open to all and anyone who is interested, regardless of major, year, or experience
- Demonstrate interest through Interest or Membership Form
- Full access to GMs, some socials, All-Finance Calendar
- Regular email updates about school-wide opportunities and resources



General Members, Interns, Associates and Board Member Application

- The Intern program are great ways to
 - Access to more resources than general members
 - More community through families and socials
 - Exclusive access to high profile speaker events, workshops that are not part of the general meetings
 - Fairly simple and nonselective recruitment process
- [Application deadline: 10/10- Friday](#)
- Coffee chats/interviews: [10/13-10/17 - WEEK 3](#)

Application!

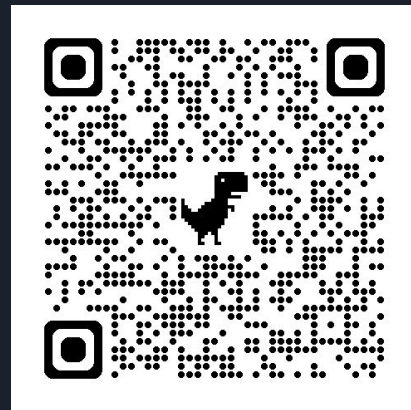




General Members, Interns, Associates and Board Member Application

- The Associate Program allows you to
 - Be more **involved** with BFS with hands on projects
 - Representatives of general members
 - Eligible for special programs
 - Priority consideration of leadership positions
 - Even more exclusive events that are only available to associates and above
- [Application deadline: 10/10- Friday](#)
- Coffee chats/interviews: [10/13-10/17 - WEEK 3](#)

Application!





Interns and Associates

The Intern Program is a great way to

- **External recruitment**
- Access to more resources
- Community through families and socials
- Exclusive access (high profile speaker events and workshops)
- Application deadline: 01/16-Friday
- Coffee chats/interviews: 01/20-01/23 - WEEK 3

The Associate Program allows you to

- **Internal recruitment**
- Hands on projects with **partnered startups and businesses**
- Asynchronous **bootcamps** for all industries
- Priority consideration of leadership positions
- Exclusive access
- Application deadline: 01/12- Monday
- Coffee chats/interviews: 01/12-01/14 - WEEK 2

Intern Application



Applications due this Friday, 01/16!



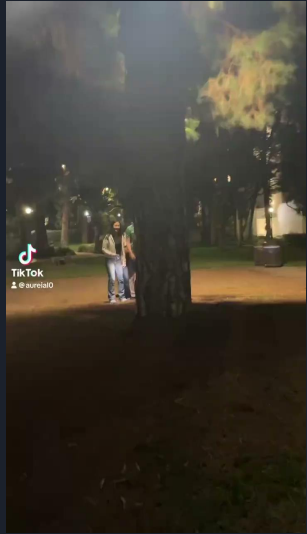
Families Program



- **Revamped from last year**
 - New format and style to help build community
- **Matched into 1 of 4 Families**
 - Surround yourself with like minded peers
- **Compete against other Families**
 - Activity and participation earns points
- **Distinguish yourself early on**
 - Early leadership helps in Associate selection
- **Build lasting friendships**
 - Form genuine connections within BFS



Families Program





Families program [see slide above]

- Surrounded by peers with similar interests and hobbies
- Given opportunity for early leadership through family head roles
- The Families Program allows you to
 - Compete against other families through the point system
 - Distinguish yourself during Associate recruitment with proven engagement
 - Build lasting friendships and professional connections through family events



Sign In Sheet!

Join BFS to grow and learn with
our community!

Password:
COMMUNITY





Committees



Committees

- Internal Strategy
- Development
- Professional Outreach
- Socials
- Families
- Funding
- Educational Events
- Digital Operations
- Social Media
- Recruitment





Other Programs



Bruin Finance Journal

What is it?

- Mission: A premier, open publication platform for high-quality research, and timely market analysis at UCLA
- Weekly Market Snapshots (WMS): Concise market news and economic trends
- Quarterly Journal: In-depth research, op-eds, and interviews

Member Requirements:

- Interns: Fulfill requirements by publishing one Snapshot per quarter
- Associates: Must contribute one long-form research article

Get Involved

- Now Accepting: Thesis statements for Quarterly Papers and sign-ups for Weekly Snapshots.

[Submit your project pitch](#)



[Sign Up for the WMS](#)





BFS Podcast

Find us on YouTube and Spotify!
@Bruin Finance Society

Financial Frontiers with Bruin Finance Society!

- Episode 1: Meet BFS Founder/President Chris Ramsey
- Episode 2: Exploring Wealth Management with Prof. William E. Simon
- Episode 3: Consulting with Pacific Consulting Group's Brandon Nguyen
- Episode 4: The MBA Path to Consulting with Ella Meredith (UCLA Anderson)

Your home for all finance news and insights at
UCLA!



Want a specific topic? Want to get involved? Reach out to bruinfinancesociety@gmail.com with your inquiry



BFS Stock Market Game

- Learn about investing in a simulated trading environment
 - Try your hand (luck?) at making money with money!
- 1) Present to March 13th, 2026
 - 2) Begin with \$100,000
 - 3) Top performers receive **prizes**!! (based on value of portfolio)
 - 4) Create free account on MarketWatch; join using the unique password provided by BFS (see right)
 - 5) Leaderboards will be posted every week via mailing list (live leaderboard will be made as well)

Scan to join!



Password: bfsatucla



Pacific Consulting Group

Pacific Consulting Group (PCG) is a partnering club of Bruin Finance Society focused on consulting!

Application form due Friday:



Information Session: Thursday,
January 15th at 7:00 PM (Zoom)

To stay up to date on PCG
recruitment and events, follow
on Instagram @pcgucla or reach
out by email
pcgucla@gmail.com



RECRUITMENT TIMELINE

Winter 2026





BFS journal





Associate mock superday





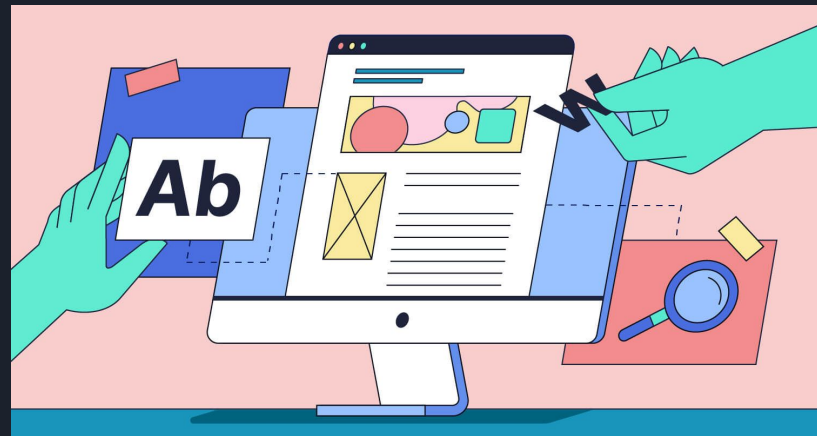
Upcoming Programs



Upcoming Programs

Interactive Blog via SubStack

- Personalized blog where members get the chance to talk about their experiences and present research





Questions?

Intern
Application:



Come to the front of the room and network
with BFS officers and associates!

Follow us on Instagram [@bruinfinance](#)

Link to our [substack](#)!

Fill out the Sign-In/Survey if
you haven't already!



*Dining Hall run after
the meeting!*