

Kaafite
İç ve Dış Ticaret



**KAFİLE
COMPANY
PROFILE**

**GLOBAL
MARKET**



**FURNİTURE
INDUSTRY IN
TURKEY**

SINCE WHEN ?

Brief History

KAFİLE GLOBAL Company Ltd. was founded in 2010, by Mr Hacı KARADAĞ. Originally, it started as a furniture retail business. It has since evolved, grew and progressed to become a full-fledged Trading and Manufacturing company, servicing both Regional and International markets.

2010

2011

2012

2013

2014

2015

2016

2017



SINCE 2010

We produced furniture for universities, hospitals, hotels, government and private institutions. We modernized hotels, universities from head to toe with special projects. Closet, table, bunk, waiting unit, couch, library... Briefly, when it comes to furniture, we designed and made almost everything. In army, hospital, hotel, school; we met everybody living in Turkey. We touched people, and we have been in their lives.

WITH THE POWER OF PRODUCTION

KAFİLE

designers, engineers, employees and technology which easily beats all the challenges, is seeking new projects in the field.

SPECIAL ARCHITECTURAL SOLUTIONS

We are offering architectural solutions to any projects without questioning the scope. Since, we are in the very middle of people's life. We are aware of that every individual or institution has different needs. We are doing the business we know best by taking into account your requests!

BY DESIGN

We always aimed to produce functional and aesthetic products, always cooperated with designers creating difference. Our products have been noticed by whole world, and worthy of many international design award.

MILESTONES of KAFİLE



2010 ○ Kayseri started its activities

2010 ○ Named

KAFİLE



2011 ○ **FACTORY**
Moved to a 7.500 m² factory which is located in Organized Industry District of Kayseri



2013 ○ To organize with the factory 2,500 m² Showroom opened



2017 ○ Kafile and Times brand was established

2010 First design award received in **DESIGN TURKEY**




2014 Second design award received in **DESIGN TURKEY**




2011 First international design award received with  **reddot** design award



2013  Showrooms are renewed with the concept of **BOX IN A BOX İDEA**

- Was worthy of IF
- **SOCİAL RESPONSİBİLİTY** projects have begun

2017  Ready to introduce a brand new experience with the concept of **Kafile**

KAFİLE
COMPANY NAME:

KAFİLE İç Ve Dış Tic.Ltd.Şti



COMPANY INFORMATION:

1.- REGISTERED OFFICE

KAFİLE İç Ve Dış Tic.Ltd.Şti

2.- BUSINESS ADDRESS

*Organize Sanayi Bölgesi Anbar
Mh.*

54

Cad. No:17/G Melikgazi/Kayseri

3.- NATURE OF BUSINESS

Hotel Concept and Furniture
& Global Marketing

4.- TYPE OF COMPANY (Ilc, ltd, etc.)

Inc.

9.- ASSOCIATED COMPANIES (list)

KafileTic A.S.

5s Mobilya Sanayi ve Tic.A.S.

Asır Mobilya Dekorasyon Taahhüt Sanayi ve Tic A.Ş.

5S Mimarlık İnşaat Mobilya Taahhüt Danışmanlık Müş. Ltd. Şti.

Pİ Özel Eğitim Basım ve Yayıncılık A.Ş.

The wolrd Grup Eğitim Yay. Mat. Kır. Dan. İth. İhr. San. Ve Tic. Ltd Şti.

10.- ANNUAL TURNOVER (specify currency)

2016: *9.500.000,00 USD*

2015: *9.000.000,00 USD*

2014: *7.000.000,00 USD*

2013: *6.000.000,00 USD*

11.- AVAILABILITY OF UNCONDITIONAL BANK GUARANTEE FOR ADVANCE PAYMENTS

10.000.000 USD

12.- IS YOUR COMPANY CURRENTLY INVOLVED IN ANY LEGAL DISPUTE? *Not involved any legal dispute.* MANUFACTURING INFORMATION:

13.- FACTORY LOCATION / UBICACIÓN DE LA PLANTA

*Melikgazi – Kayseri /
TURKIYE*

14.- FACTORY STAFFING:

Workers:

55

Technical staff : 8

15.- SQM OF FACILITIES

Panel Furniture Production 7.500m2 Metal Production

5.850m2

Upholstery Production 10.000m2

16.- NUMBER OF PRODUCTION LINES (describe the type of each production line: i.e. assembly

17.- ARE YOUR FACTORY FACILITIES, INCLUDING EQUIPMENT, OWNED OR LEASED? *Owned*

18.- LEAD TIME FOR PREPARATION OF SHOP DRAWINGS (assume a 200-room hotel)

3-4 weeks

19.- LEAD TIME FOR MANUFACTURING (assume a 200-room hotel)

6-8 weeks

20.- LANGUAGES SPOKEN

English & Turkish & Arabic & French & German

21.- IS IT POSSIBLE TO VISIT YOUR FACTORY? *Possible / any time.*

22.- PLEASE PROVIDE A DESCRIPTION OF YOUR QUALITY CONTROL PROCEDURES AND RESOURCES (attach existing procedures as an exhibit if available)

23.- PLEASE ATTACH SAMPLE SHOP DRAWINGS DEVELOPED FOR A SIMILAR PROJECT

24.- MAIN MACHINE LIST (please attach to this document)

Please check attached machinery and equipment list.

25.- FOR CASEGOODS AND SEATING ONLY: confirm the below if available withinyour plant:

Meta

|

casegoods

Fixed

available

available

26.- LIST OF SUPPLIED HOTELS IN THE LAST SIX YEARS:

#	Hotel Name	Location	areas where supplied (all hotel, or guestrooms, or common areas or F&B outlets)	Year	Approx. value	Client contact details (developer/Investor or Procurement Agent)
	Hyatt Gebze	Gebze / Türkiye	All Hotel	2016	1.700.000,00 USD	Doğuş Holding
	Point Hotel	Ankara / Türkiye	All Hotel	2016	1.000.000,00 USD	Ako Turizm Yat A.Ş.
	Hilton Double Tree	Minsk / Beyaz Rusya	Guestrooms	2016	1.500.000,00 USD	Rönesans Holding
	Hilton Garden Inn	Çorlu / Türkiye	Guestrooms	2015	650.000,00 USD	Santeks İnşaat
	Holiday Inn Hotel	Makkah / Saudi Arabia	All Hotel	2015	7.500.000,00 USD	Makkah Real Estate
	Millenium Hotel	Makkah / Saudi Arabia	All Hotel	2014	6.400.000,00 USD	Four Corners
	Rixos Premium Belek	Belek / Türkiye	Guestrooms	2014	1.450.000,00 USD	Sembol İnşaat
	Dedeman Bostancı	İstanbul / Türkiye	All Hotel	2014	1.500.000,00 USD	Haldız İnşaat
	Radisson Blu Tuzla	İstanbul / Türkiye	All Hotel	2013	1.950.000,00 USD	Kolin İnşaat
	Sochi Apart Hotel	Sochi / Russia	All Hotel	2013	1.650.000,00 USD	Sembol İnşaat
	Le Meridien Jeddah	Makkah / Saudi Arabia	All Hotel	2013		
	Swissotel	Sochi / Russia	Guestrooms	2013	2.485.000,00 USD	Sembol İnşaat
	Moda Jeddah Hotel	Jeddah / Saudi Arabia	All Hotel	2013		
	Kaya Palazzo Belek	Belek / Türkiye	All Hotel	2012	1.050.000,00 USD	Kaya Holding
	Holiday Inn	Çimkent / Kazakhstan	Guestrooms	2012		
	Marriott Armenia	Yerevan	Guestrooms	2012		
	Sheraton Hotel	Jeddah / Saudi Arabia	All Hotel	2012		
	Kaya Palazzo	Bolu / Türkiye	All Hotel	2011	1.750.000,00 USD	Kaya Holding
	Kaya İzmir Thermal	İzmir / Türkiye	All Hotel	2011	1.103.000,00 USD	Kaya Holding
	Elaf Bakkah Hotel	Makkah / Saudi Arabia	Guestrooms	2011		
	Al Shaza Hotel	Madina / Saudi Arabia	Guestrooms	2010		
	Aheloy Hotel	Bulgaria	Guestrooms	2010		
	Kronos Hotel	Ankara / Türkiye	All Hotel	2010		

I, the undersigned, hereby certify that to the best of my knowledge, the particulars given in these forms are true and correct. The Project Team is authorised to make direct inquiries and references to any person (whether named or not in this form) to verify information submitted herein or obtain any further data to establish suitability for this project.

I fully understand that the Project Team reserves the sole right and discretion to select the applicants and place them on the approved tender list.

Signed

Name
Position
Date

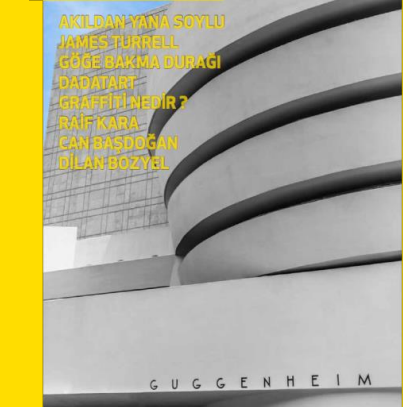
BOXINABOXIDEA



communication
design award

INTERIOR
DESIGN
**BEST
OF
YEAR FINALIST
2013**

2013



FRAME

DESIGNED by White Gold



reddot design award
honourable mention 2012



2010
Superior
Design Award



German
Design Award
SPECIAL
MENTION 2014



German
Design Award
NOMINEE 2013



TWINS

DESIGNED by White Gold



communication
design award

2013



A'DESIGN AWARD
WINNER 2012



DESIGN
TURKEY
2010
Good Design Award



German
Design Award

NOMINEE 2013



German
Design Award

NOMINEE



ENVELOPE

DESIGNED by White Gold



JOIN

DESIGNED White Gold



German
Design Award

NOMINEE 2013



SO SIMPLE OFFICE

DESIGNED by White Gold



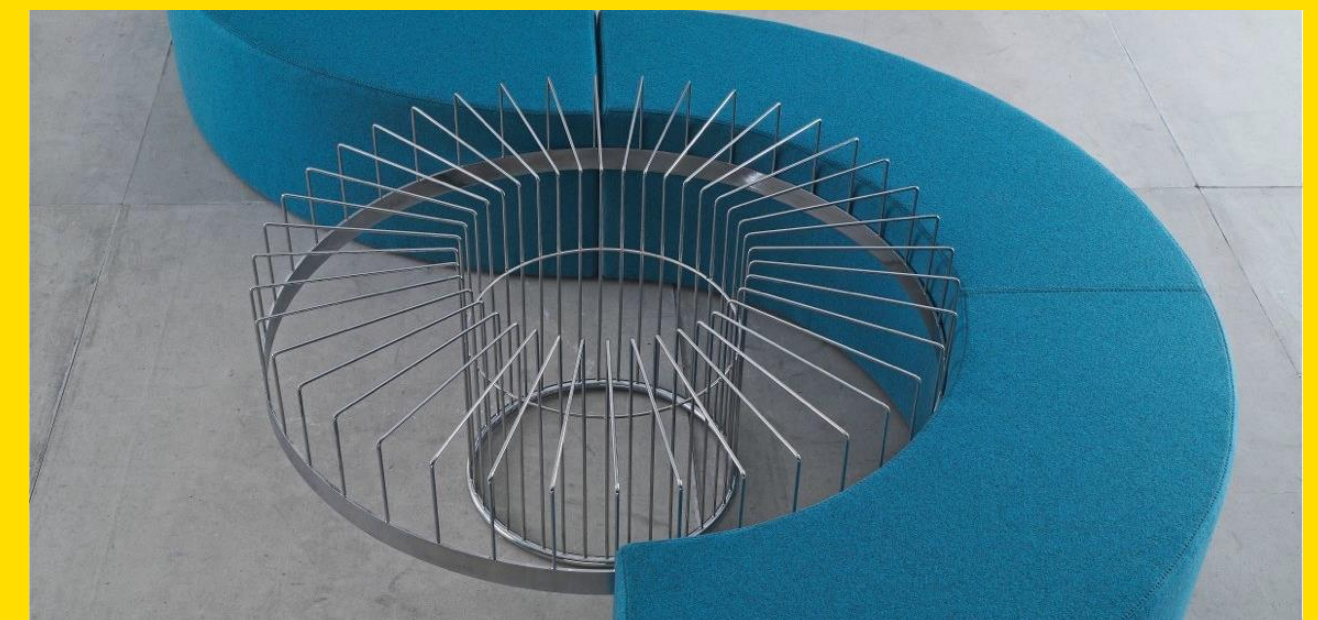
MAG

DESIGNED by White Gold



German
Design Award

NOMINEE 2013



WALL

DESIGNED by AYTAÇ YILMAZ



GEO

DESIGNED by Sule KOÇ



CERTIFICATIONS



SBU BASED SALES STRUCTURE

CORPORATE SALES

Specialized on standart office furniture products. Works with private sector, construction companies, architects, and finance sector.

INTERNATIONAL SALES

Specialized on standart office furniture products. Works with dealers, architects internationally

CONTRACT DIVISON

Specialized on fixed project furniture from hotel to residential even public spaces. Works with private sector, construction companies, architects..

FACTORY

Specialized on mass production furniture for other brands with their labels. Product range goes from sofa to kitchen and metal furniture

INTEMA

For the last eleven years mass producers of Eczacıbaşı Kitchen Brand Intema from volumed real estates kitchens to retal kitchen sales.

GOVERNMENT SALES

Specialized on standart Office furniture has been defined together with govenment. All Governmental instutions make a desicion by a catalog sales system

Sales Point

Nenehatun
 Çamlıca
 Keyap
 Factory
 Showroom

Saudi Arabia
 Azerbaijan
 Dubai
 Libya
 Holland

Factory
 Showroom

Factory
 Showroom

Dealers of Intema
 Intema Sales team

The State Procurement
 and Supply Office
 (DMO)
 DMO Factory
 Showroom
 DMO e-sales

Competitors

KAFİLE With unique sales strategies in each sales channels has different competitors. While In corporate sales it is Yataş and Koleksiyon, In Contract division It is Mob. However Intema and factory sales it has no competitors.

CORPORATE SALES

Specialized on standart office furniture products. Works with private sector, construction companies, architects, and finance sector.



CONTRACT DIVISION

Specialized on fixed project furniture from hotel to residential even public spaces. Works with private sector, construction companies, architects..



KAFİLE



Kaya Izmir Thermal & Convention



Monday 7 July 14

Client KAYA HOLDING
Web www.kayaholding.com.tr
Location Izmir - Turkey
Type Thermal Hotel Project
Comm. Date August 2010
Contract price 1.013.157,00 USD
Scope of work Guestroom & Podium floors loose

and fit-out furnitures

316 Guestrooms

Lobby
Main Restaurant
A'la Carte Restaurant
Aura Lobby Lounge
Ferania Garden

Indoor Area 40.000 m2
Bed Capacity 670

KAFİLE



Kaya Palazzo Ski & Mountain Resort

Client KAYA HOLDING
Web www.kayaholding.com.tr
Location Kartalkaya/Bolu - Turkey
Type Ski Hotel Project
Comm. Date December 2011
Contract price 750.000,00 USD
Scope of work Rooms fit-out & loose furnitures

Superior	104
Deluxe	5
Junior Suite	10
Deluxe Suite	10
Grand Suite	9
King Suite	1
TOTAL	139 rooms

Indoor Area 15.000 m²
Bed Capacity 278

KAFİLE



Kaya Palazzo Ski & Mountain Resort

Client KAYA HOLDING
Web www.kayaholding.com.tr
Location Kartalkaya/Bolu - Turkey
Type Ski Hotel Project
Comm. Date December 2011
Contract price 1.030.000,00 USD
Scope of work Podium loose & fit-out furnitures

Lobby
Lobby Bar
Restaurants
Swiss Fondue Restaurant
Chillout Bar
Spa & Wellness Center
Convention & Ballroom

Indoor Area 15.000 m2
Bed Capacity 278

KAFİLE



July 14

Barida Hotels, Isparta

Client BARIDA HOTELS
Web www.baridahotels.com
Location Isparta - Turkey
Type City Hotel Project
Comm. Date February 2012
Contract price 81.820,00 USD
Scope of work Podium & rooms loose furnitures

142 Guestrooms

Lobby
Roof Restaurant & Bar
A'la Carte Restaurant
Bi Cafe

Indoor Area 9.000 m2
Bed Capacity 278

KAFİLE



Sheraton Jeddah Hotel

Client UNIDECOR
Web www.unidecor.com
Location Jeddah - Kingdom of Saudi Arabia
Type City Hotel Project
Comm. Date September 2012
Contract price 500.000,00 USD
Scope of work Guestrooms & Podium floors

loose furnitures

149 Guestrooms

Lobby
Feast Restaurant

Indoor Area 10.000 m2
Bed Capacity 300



KAFİLE



Kronos Hotel, Ankara



Monday 7 July 14

Client KRONOS
Web www.kronshotel.com
Location Golbasi/Ankara- Turkey
Type City Hotel Project
Comm. Date August 2010
Contract price 500.000,00 USD
Scope of work Guestroom & Podium floors loose

and fit-out furnitures

21 Guestrooms

Lobby
Main Restaurant
A'la Carte Restaurant
Lobby Lounge

Indoor Area 5.800 m2
Bed Capacity 55

KAFİLE



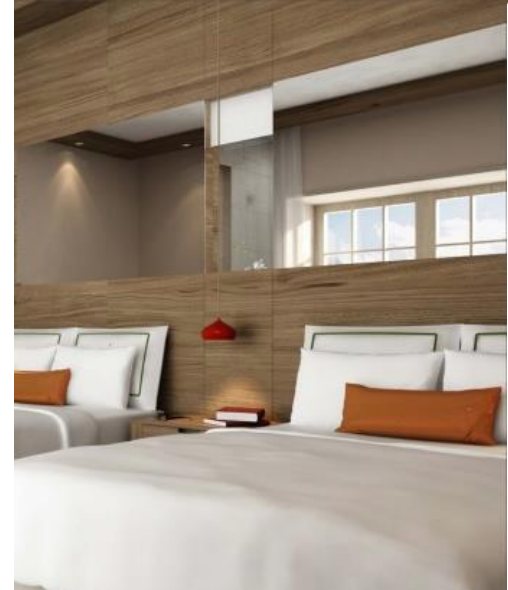
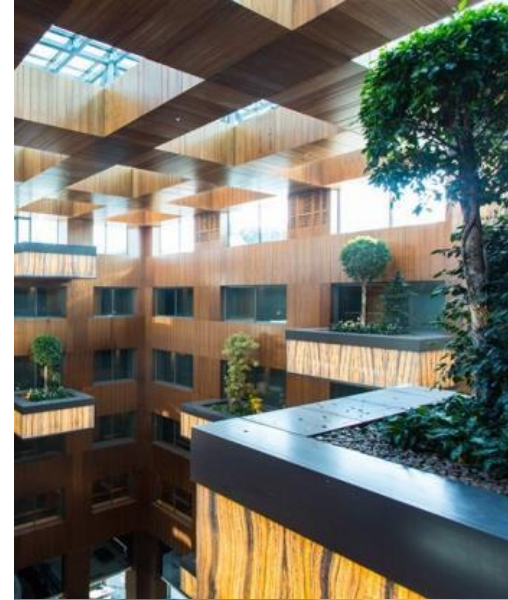
Atatepe Dormitory Ankara

Client DOGRUER PETROL
Web www.dogruer.com
Location Beytepe, Ankara - Turkey
Type Dormitory Project
Comm. Date June 2010
Contract price 510.150,00 USD
Scope of work Dorm rooms & public areas loose
and fit-out furnitures

Indoor Area 15.000 m²
Bed Capacity 660



2015
CONTRACT PROJECTS





Elaf Bakkah Hotel, Makkah

Client BUILDECO & UNIDECOR

Web www.unidecor.com

Location Makkah - Kingdom of Saudi Arabia

Type Hotel Project

Comm. Date September 2013

Contract price 1.602.729,00 USD

Scope of work Rooms fit-out & loose furnitures

810 Guestrooms & Suites

AlSafa Restaurant

Al Marwa Restaurant

Al Rawda Cafe

Mina Cafe

Multipurpose Rooms

Indoor Area 28.500 m2

Bed Capacity 2025



Swissotel Sochi - Krasnaya Polyana

Client SYMBOL CONSTRUCTION
Web www.sembolinsaat.com.tr

Location Krasnaya Polyana - Sochi
Type Ski Hotel Project
Comm. Date December 2013
Contract price 2.485.000,00 USD
Scope of work Rooms & Podium loose furnitures

166 Guestrooms & Suites

Lobby – Block 3
Lobby – Block 4
All Day Dning
Restaurant
Mezzanine Lounge & Bar
Conference & Meeting
Spa & Sport Service Area

Indoor Area 10.500 m2
Bed Capacity 300

KAFİLE



Sochi Apart - Krasnaya Polyana

Client SYMBOL CONSTRUCTION
Web www.sembolinsaat.com.tr

Location Krasnaya Polyana - Sochi
Type Ski Apart Hotel Project
Comm. Date November 2013
Contract price 1.834.077,00 USD
Scope of work Apartments loose furnitures

26 Apartment Block
1514 Flats

Indoor Area 150.000 m2
Bed Capacity 4317



Monday 7 July 14

Le Meridien Jeddah

Client UNIDECOR
Web www.unidecor.com
Location Jeddah- Kingdom of Saudi Arabia
Type Hotel Project
Comm. Date April 2013
Contract price 255.500,00 USD
Scope of work Rooms loose furnitures

293 Guestrooms & Suites

Indoor Area 12.255 m2
Bed Capacity 686



Holiday Inn, Shymkent

Client ZERDE STROY

Web

Location Shymkent - Kazakhstan

Type City Hotel Project

Comm. Date August 2013

Contract price 1.320.000,00 USD

Scope of work Guestrooms & Public area

fit-out and loose furnitures

97 Guestrooms & Suites

Lobby

Guestroom Corridors

Restaurants



Hotel Riu Kaya Belek

Client	KAYA HOLDING		
Web	www.kayaholding.com.tr		
Location	Kartalkaya/Bolu - Turkey		
Type	Ski Hotel Project		
Comm. Date	June 2013		
Contract price	2.711.757,00 USD		
Scope of work	Rooms fit-out & loose furnitures		
	Standard	364	
	Standard roof	80	
	Disabled	10	
	Major Suite	4	
	Family Suite	22	
	Junior Suite	8	
	Corner Suite	16	
	King Suite	2	
	TOTAL	506 rooms	
Indoor Area	90.000 m2		
Bed Capacity	1.200		

KAFİLE



Hotel Riu Kaya Belek

Client KAYA HOLDING
Web www.kayaholding.com.tr
Location Kartalkaya/Bolu - Turkey
Type Ski Hotel Project
Comm. Date June 2013
Contract price 833.333,00 USD
Scope of work Podium floors loose furnitures

Lobby
The Palazzo Restaurant A'la
Carte Snack Restaurant
Asiatico Restaurant
Tulipano Restaurant
Beirut Restaurant
Livio Restaurant
Steak Restaurant
Patisserie Brasserie

Indoor Area 90.000 m2
Bed Capacity 1.200

Dedeman Hotel, Istanbul



Client HALDIZ INSAAT
Web www.dedeman.com
Location Bostancı / İstanbul - Turkey
Type City Hotel Project
Comm. Date July 2013
Contract price 959.898,00 USD
Scope of work Rooms fit-out furnitures

Superior	178
Deluxe	32
Executive	32
Executive Suite	32
Grand Suite	9
King Suite	1
TOTAL	252 rooms

Indoor Area 10.820 m2
Bed Capacity 620

KAFİLE



Dedeman Hotel, Istanbul



Monday 7 July 14

Client HALDIZ INSAAT
Web www.dedeman.com
Location Bostancı / İstanbul - Turkey
Type City Hotel Project
Comm. Date July 2013
Contract price 536.702,00 USD
Scope of work Podium floors fit-out furnitures

Bostancı Restaurant
Adalar Roof Restaurant
Adalar Roof Bar
Lobby Lounge
Vitamin Bar
Meeting Rooms
Life Style Health Club

Indoor Area 10.820 m2
Bed Capacity 620

KAFİLE



Radisson Blu Hotel&Spa, Istanbul Tuzla

Client KOLIN CONSTRUCTION
Web www.kolin.com.tr
Location Tuzla/Istanbul - Turkey
Type City & Spa Hotel Project
Comm. Date September 2013
Contract price 1.531.342,00 USD
Scope of work Rooms fit-out & loose furnitures

Standard Rooms
Business Class Rooms
Superior Rooms
Junior Suite
One Bedroom Suite
Executive Suite
TOTAL 249 rooms

Indoor Area 13.500 m2
Bed Capacity 740

KAFİLE



Radisson Blu Hotel&Spa, Istanbul Tuzla

Client KOLIN CONSTRUCTION

Web www.kolin.com.tr

Location Tuzla/Istanbul - Turkey

Type City & Spa Hotel Project

Comm. Date September 2013

Contract price 360.937,00 USD

Scope of work Podium floors loose furnitures

Lobby

Lounge Lobby & Bar

A'la Carte Restaurants

Main Restaurant

Casa Grill Restaurant

Fitness Area

Elysia Spa

Indoor Area 13.500 m²

Bed Capacity 740

KAFİLE



Residorm Kirikkale Dormitory

Client RESIDORM
Web www.residorm.com
Location Kirikkale - Turkey
Type Dormitory Project
Comm. Date August 2013
Contract price 810.911,00 USD
Scope of work Rooms loose furnitures

KAFİLE



Residorm Muğla & Kırıkkale Dormitory

Client RESIDORM
Web www.residorm.com
Location Muğla - Turkey
Type Dormitory Project
Comm. Date August 2013
Contract price 913.981,00 USD
Scope of work Doors & fit-out furnitures

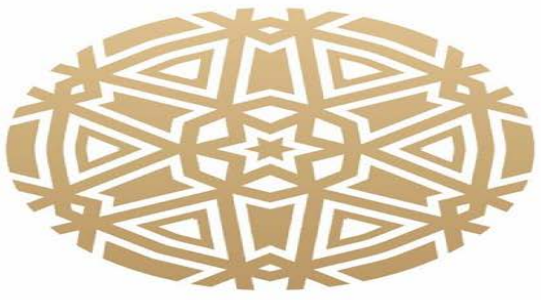
KAFİLE



Nazarbayev Dormitory & Housing

Client Sembol Construction
Web www.sembolinsaat.com.tr
Location Astana - Kazakystan
Type Dormitory Project
Comm. Date 2013
Contract price 3.944.267,00 USD
Scope of work Rooms fit-out & loose furnitures





kāfilē
İç ve Dış Ticaret



2016
CONTRACT PROJECTS



KAFİLE



Armenia Marriott Hotel Yerevan

Client ARMENIA HOTEL COMPLEX
Web www.marriottarmenia.am
Location Yerevan - Armenia
Type City Hotel Project
Comm. Date April 2014
Contract price 662.195,00 USD
Scope of work Rooms and corridor fit-out & loose furnitures

Superior	30
Deluxe Suite	2

TOTAL 32 rooms

KAFİLE



Dedeman Park Bostancı

Client HALDIZ INSAAT

Web www.haldizinsaat.com.tr

Location Bostancı/Istanbul - Turkey

Type City Hotel Project

Comm. Date December 2014

Contract price 545.051,00 USD

Scope of work Guestrooms and public areas

fit-out & loose furnitures

Rooms:

Superior rooms 110

Public Areas:

Lobby

Park Restaurant

Meeting Rooms

KAFİLE



RIXOS
PREMIUM BELEK



Monday 7 July 14

Rixos Premium Belek

Client SYMBOL CONSTRUCTION
Web www.sebolinsaat.com.tr

Location Belek/Antalya - Turkey
Type Resort Hotel Project
Comm. Date May 2014
Contract price 2.081.090,00 USD
Scope of work Rooms fit-out & loose furnitures

Family Lake House
Deluxe Rooms
Family Suite
Superior Suite
Queen Suite
Royal Premium Suite

TOTAL 665 rooms

Total Area 405.000 m2
Bed Capacity 1700

KAFİLE



Hilton Garden Inn, Çorlu

Client SANTEKS IPLIK

Web www.santeksbrode.com.tr

Location Çorlu - Turkey

Type City Hotel Project

Comm. Date December 2014

Contract price 590.910,00 USD

Scope of work Rooms fit-out & loose furnitures

130 Superior Rooms



Millennium Hotel, Makkah

Client FOUR CORNERS

Web

Location Makkah – Saudi Arabia

Type Pilgrim Hotel Project

Comm. Date 2014 – ongoing project

Contract price 6.400.000,00 USD

Scope of work Typical guestrooms and suite
rooms fit-out & loose furnitures

TOTAL 784 rooms

Indoor Area 30.000 m²

Bed Capacity 1814

KAFİLE



LOSEV City

Client LOSEV Leukemia Foundation
Web www.losevkent.com
Location Incek/Ankara - Turkey
Type Hospital & School Project
Comm. Date 2014 – ongoing project
Contract price 1.220.000,00 USD
Scope of work Hospital Rooms, classrooms &

general area fit-out furnitures

Hospital;
170 Standard Patient Room
18 Suite Patient Room
59 Polyclinic Room
Corridor & general areas

School;
30 Classrooms
Teachers rooms
Preschool rooms
Corridors

Total Area 18.600 m2
Bed Capacity 300

KAFİLE



DoubleTree by Hilton Hotel, Minsk

Client RENAISSANCE CONSTRUCTION

Web www.rencons.com

Location Minsk - Belarus

Type City Hotel Project

Comm. Date 2014 – ongoing project

Contract price 1.950.000,00 USD

Scope of work Rooms fit-out & loose furnitures

King Rooms 146

Twin Rooms 46

TOTAL 192 rooms

Total Area 14.000 m2

Bed Capacity 450

KAFİLE



Nazarbayev Dormitory & Housing

Client Sembol Construction
Web www.sembolinsaat.com.tr
Location Astana - Kazakystan
Type Dormitory Project
Comm. Date 2014 – ongoing project
Contract price 2.626.000,00 USD
Scope of work Rooms fit-out & loose furnitures



KAFİLE



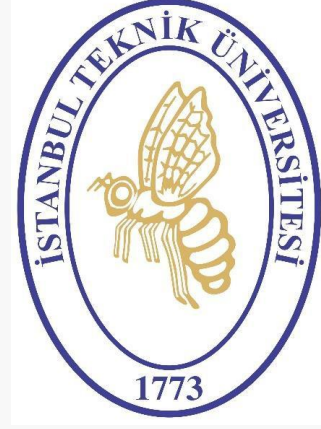
Astana Military Academy

Client Sembol Construction
Web www.sebolinsaat.com.tr
Location Astana - Kazakystan
Type Office Project
Comm. Date 2014
Contract price 1.949.175,00 USD
Scope of work Rooms fit-out & loose furnitures

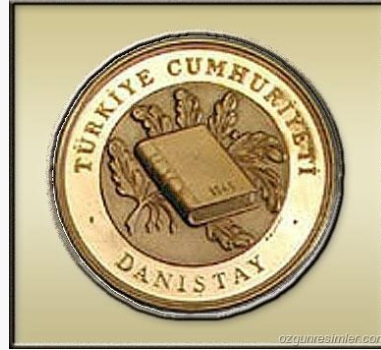


GOVERNMENT SALES

Specialized on standart Office furniture has been defined together with government. All Governmental instutions make a desicion by a catalog sales system



T.C.
Ulaştırma Denizcilik ve
Haberleşme Bakanlığı



DEALERSHIPS





sectors

architects

creativity

designers

institutions

collaborative

capable

community

connected

entrepreneurs



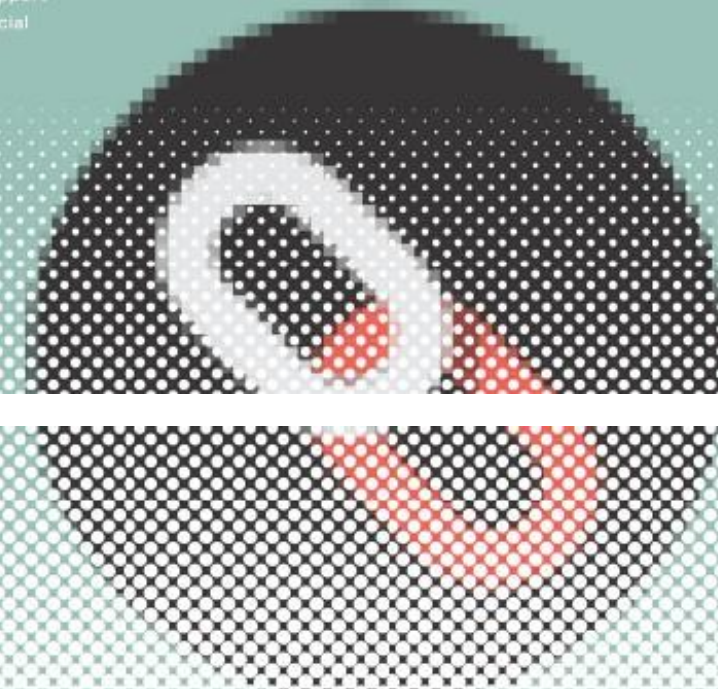
INSPIRATION
innovation
intelligence
imagination
information
intellectual

DESIGN
dream
discovery
dynamism
documentation
discussion

EXCELLENCE
environment
effectiveness
ethics
experience
education

ART
acknowledge
adapt
application
awareness
aesthetic

SUSTAINABILITY
solutions
senses
satisfaction
support
social





Kaafite
İç ve Dış Ticaret