



# C7H 6X4 PRIME MOVER



(Reference Photo)

## EXTERNAL DIMENSIONS

Length (mm)	6945
Width (mm)	2496
Height (mm) (empty)	3230
Wheel base (mm)	3400
Wheel track(mm)	Front 2041
	Rear 1830
Min ground clearance (mm)	257
Approach angle (°)	15
Departure angle (°)	46
Front overhang (mm)	1475

## FEATURES

- Reliable 13L MAN engine with 540Hp and 2500 High Torque.
- 12 Speed AMT gearbox smoothly with WABCO technology.
- Luxury roomy Cab /Top Cooler/ ISRI Ventilated heated seat/ 20L Refrigerator/LED Light /Voith Retarder as standard.
- EBS/ACC/AEBS/HAS/FCWS/WABCO Radar/ Quadrangle camera.
- Differential locks and cross locks for when the going gets tough.
- Alloy rim/air tank/fuel tank/Air suspension to reduce tare weight.
- ZF steering pump /Continental Color display/Knorr brake control/Voss connector/JOST fifth wheel.
- 800L+400L dual fuel tank/90L AdBlue tank
- Fully complied with Australia Design Rules.



# C7H 6X4 PRIME MOVER

## WEIGHTS

GVM (kg)	25000	
Max load of two axles (kg)	Front	7000
	Rear	18000
GCM (kg)	75000	

## CAPABILITY

Max speed(km/h)	110
Min turning diameter (m)	16
Max climb gradient (%)	35
Fuel tank (L)	800L+400L

## CABIN

Model	C7-G
Sits	2
Turning radius (mm)	3640

## ENGINE

Model	MC13.54-50
Displacement (L)	12.419
Power rating kW/(r/min)	397/1900
Max torque Nm/(r/min)	2500/1050-1350

## CLUTCH

Model	CH430-25 diaphragm
Operation Mode	Hydraulic with air

## TRANSMISSION

Model	AMT -HW25712XAC
Forward gear ratio	11.8,9.71,7.1,5.61,4.38,3.44,2.7,2.1,1.62,1.28,1,.079
Reverse gear ratio	10.85,2.48

## FRAME

Model	Trapezium frame	
Main beam cross-section (mm)	270×85×8	
Width of frame Assembly(mm)	Front	940
	Rear	762

## DRIVING AXLE

Model	MCY13 disc	
Redactor ratio	Ratio	3.08
	Optional	2.85, 3.08, 3.7, 4.11
Differential lock	Diff lock+ cross lock	

## FRONT AXLE

Model	HR7 (Disc)
-------	------------

## SUSPENSION

Front	Model	Non-independent
	Number	3 leaf parabolic
Rear	Model	Non-independent
	Number	8 air bag

## STEERING GEAR

Model	Ball circul
Ratio	22.2-26.2
Max pressure of pump (kPa)	18300
Steering way	Recirculating ball

## BRAKING SYSTEM

Working pressure (kPa)	1000
Drive braking type	Dual circuit
Brake power adjust type	EBS ESC EBL ASR
Parking brake type	Spring stored energy air cut brake
Assistant brake type	EVB

## ELECTRICS

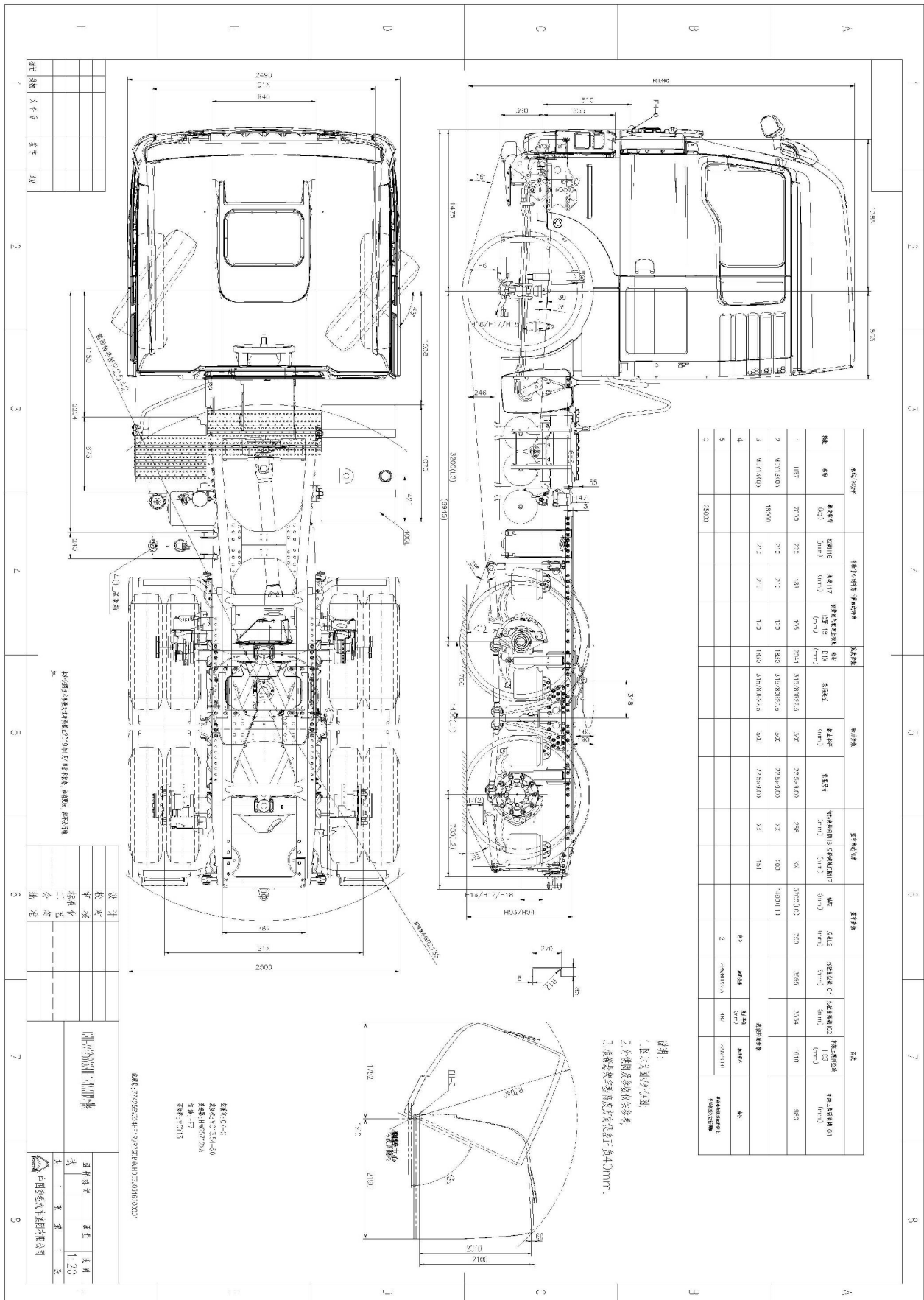
Circuit type	double, control positive pole
Voltage (V)	24
Generator power (kW)	2.0
Accumulator voltage / capacity(V/Ah)	2x12/180

## EXTRAS

Trailer brakes ABS to rear	Included
Sun visor, side skirts	Included
Retarder	VR115CT(standard)



# C7H 6X4 PRIME MOVER



(Reference Drawing)