



STAINLESS STEEL SPLASH BACK

A fold down table on the side of your caravan/campervan is a must have for all owners. It's very handy when waking up in the morning and brewing your first coffee or cooking bacon and eggs outside watching mother nature.

The only problem with some tables on the market is that they do not come with a splash back to keep the grease from splatting on the side of your clean van.

In this PDF I will show you how to install a splashback to your existing fold down table which will make it easy to clean up after you have finished cooking.

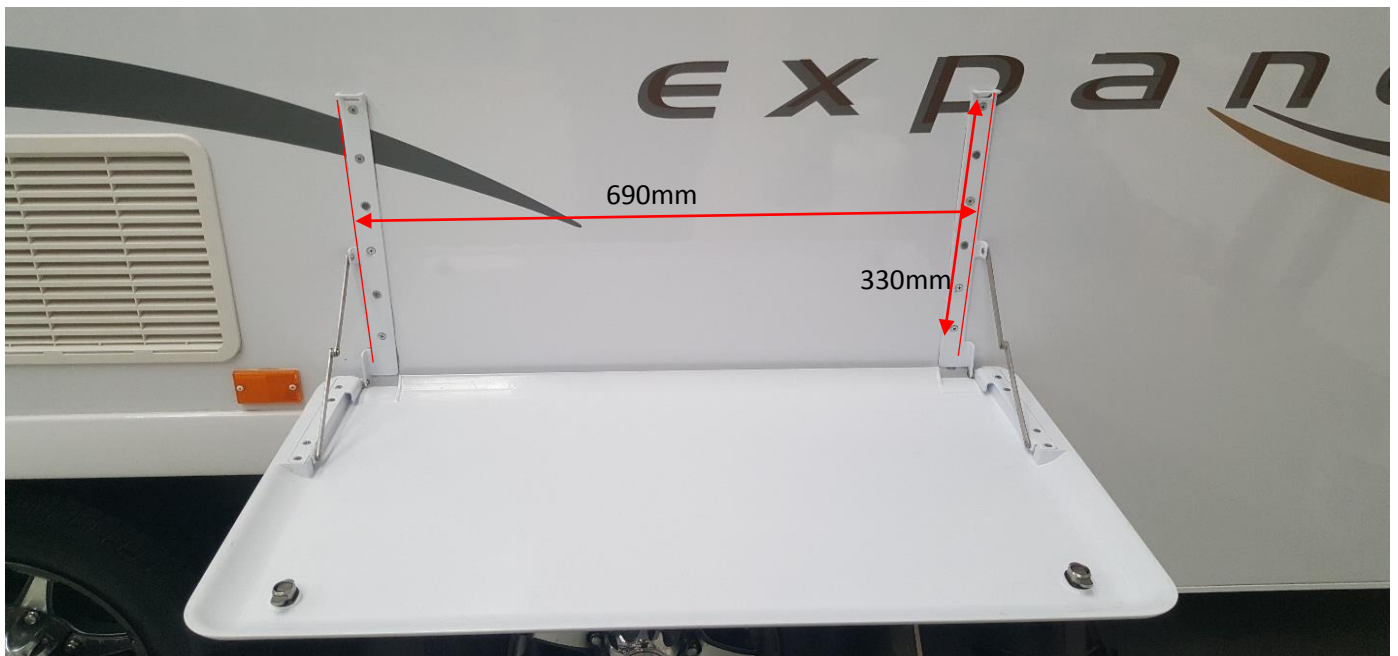
CURRENT FOLD DOWN TABLE



This is a fold down table that has been fitted to the side of the van in the open and closed position. Our aim will be to install a stainless steel sheet to act as a splashback using the existing screw holes already provided.

STEP 1

Measure the height and length of the stainless steel sheet you will require. For this van the sheet size was 690mm x 330mm. The thickness of the sheet that we ordered was 1.2mm thick. Contact the guys Snelling Engineering (Ph (03) 5821 0776) if you are in Victoria or contact any stainless steel fabricator.



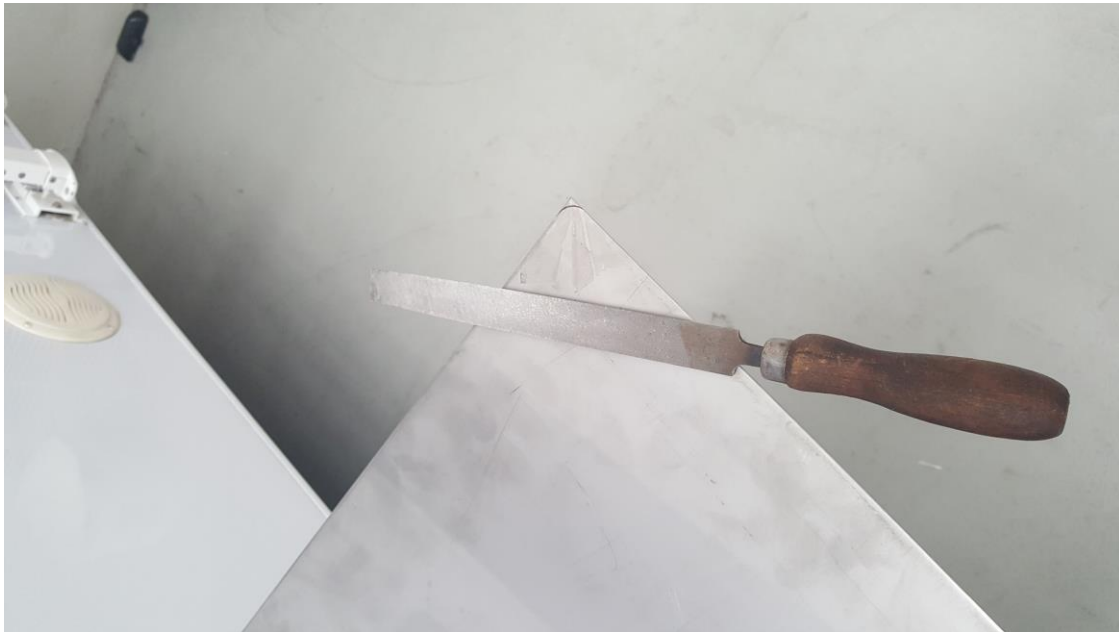
Step 2

Make sure you are happy with your size of the sheet and it covers both sides of the support brackets.



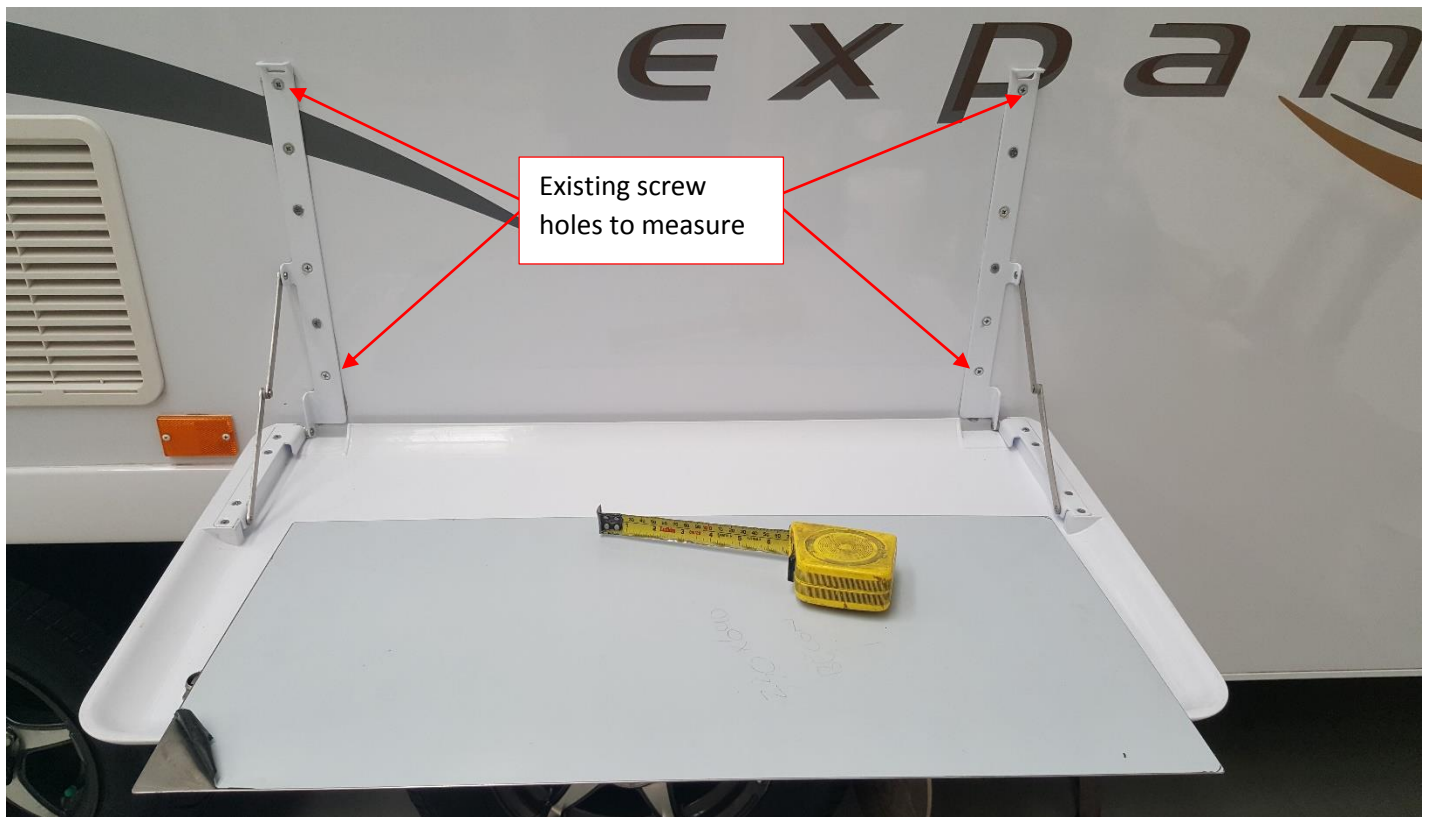
Step 3

File off the corners to remove sharp corners.



Step 4

The next thing you will need to measure are the holes on the existing bracket on the van, then transfer them across onto the stainless sheet metal.

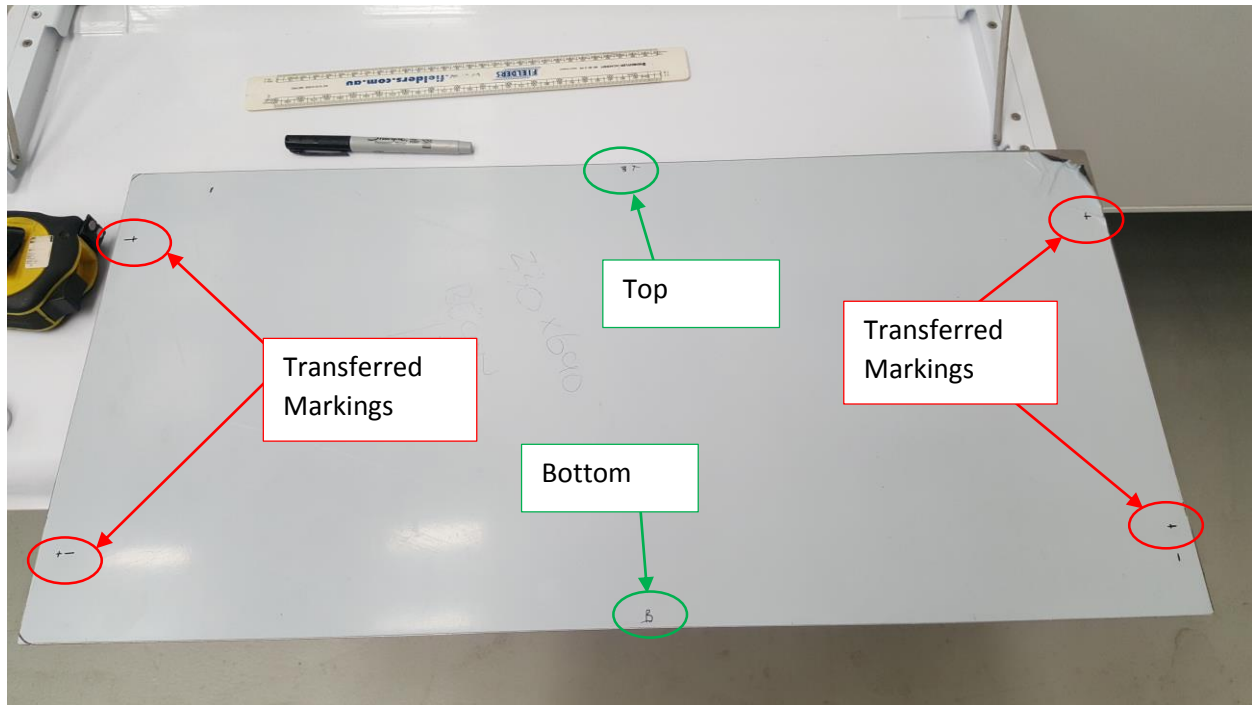




Make sure when you measure the existing screw holes, to always measure center of the holes

Step 5

With a thin marker transfer all measurements to the protected side of the stainless sheet. It is always good practice to label the top and bottom of the sheet.



Step 6

Now we need to drill the holes on each of the markings. You will need to remove one of the existing screws from the table support bracket as that will give you the required hole size to drill.

Start by using a punch (figure 1) on each mark. This will stop your drill from sliding everywhere.



Figure 1



Step 7

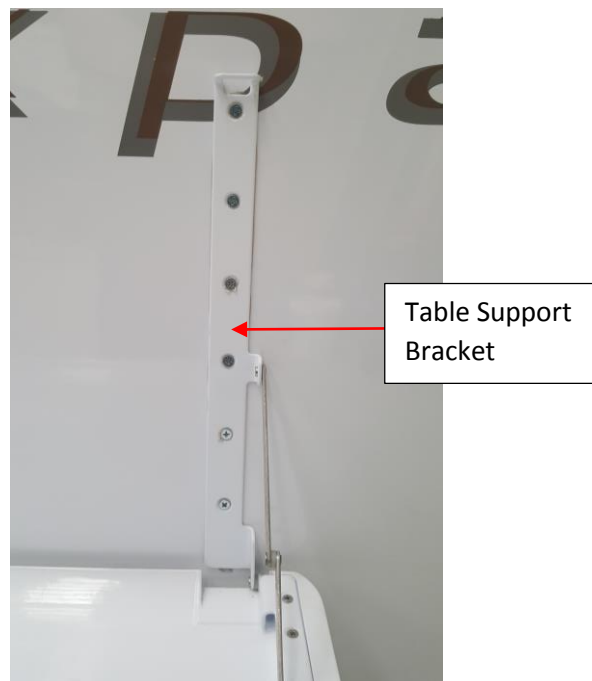
Once you have then drilled all 4no. holes you then need to counter sink each hole for the head of the screw. You can do this by using a counter sink bit or by using a larger drill bit. In this instance I went for the larger drill bit. NOTE: Drill very slowly and take your time as the material is thin and you don't want to drill all the way through.



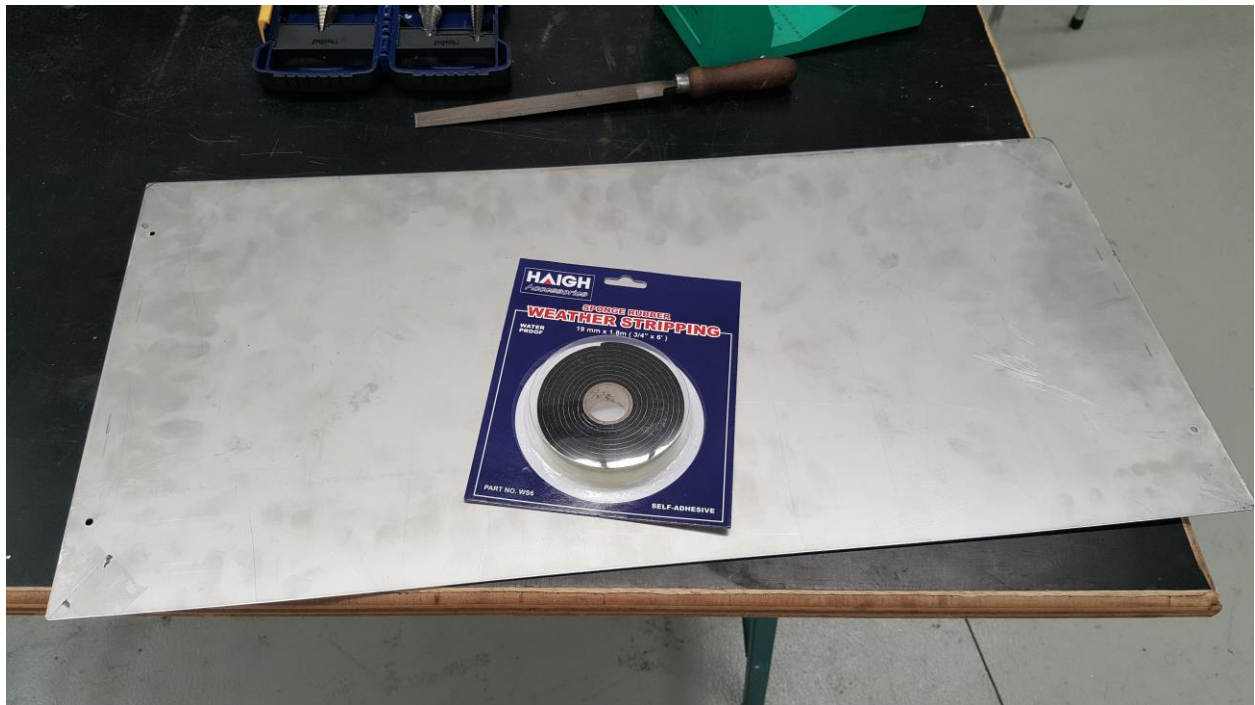


Step 8

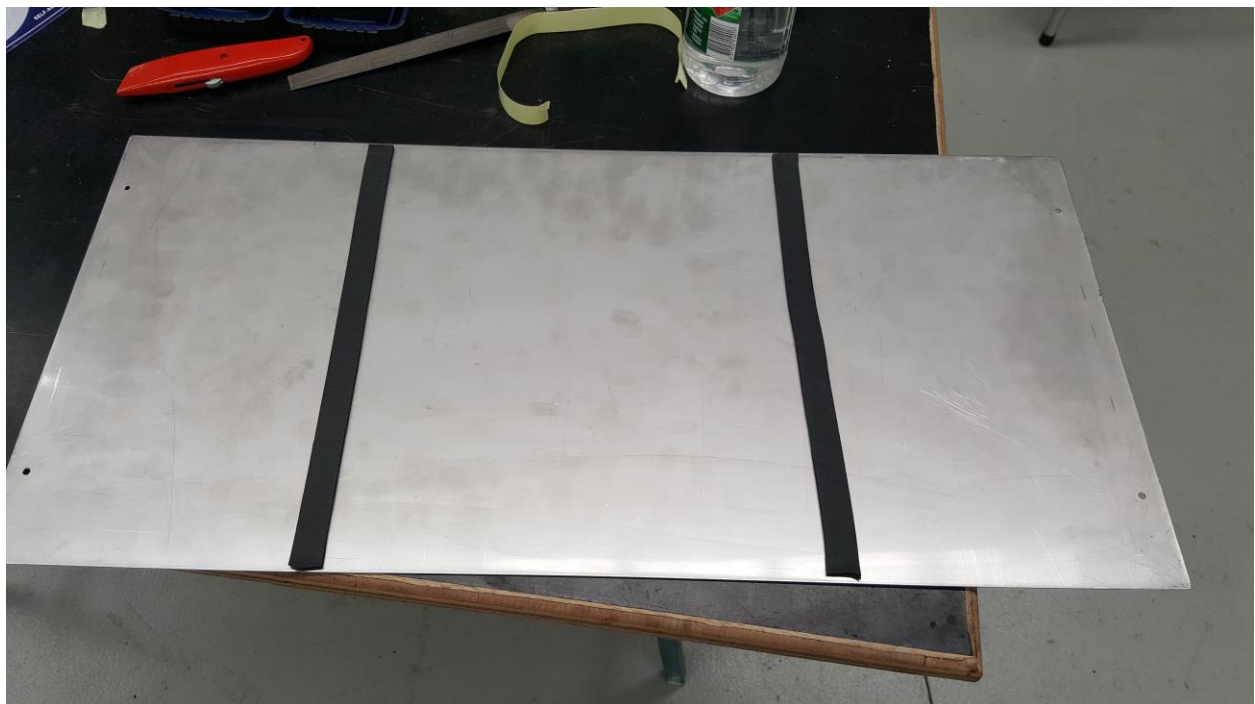
As the stainless sheet will be fixed to the face of the table support brackets, this will mean there will be a small gap between the van and backside of the sheet due to the thickness of the table bracket.



To stop the stainless steel from rubbing onto van (possibly during travel) install a sponge weather strip to the backside of the sheet. This will protect your van panel. Make sure the strip is water proof.



Cut the length 2no. strips and stick them on to the back side of the sheet.



Step 8

Peel off the protective on the face side of the stainless sheet and remove the 4no. screws from the table support bracket.



Step 9

Screw the stainless sheet to the table brackets carefully. Depending on the make of the table make sure you have clearance at the bottom as detailed below.



Step 10

And you are done



If you have any questions please don't hesitate to contact us at caravanmods.com

Happy Modding