



MAY 22 - 28, 2025

EXTRA! EXTRA! READ ALL ABOUT IT!

Ladies in London

European adventures await...



OH YOUR ANNIVERSARY!?

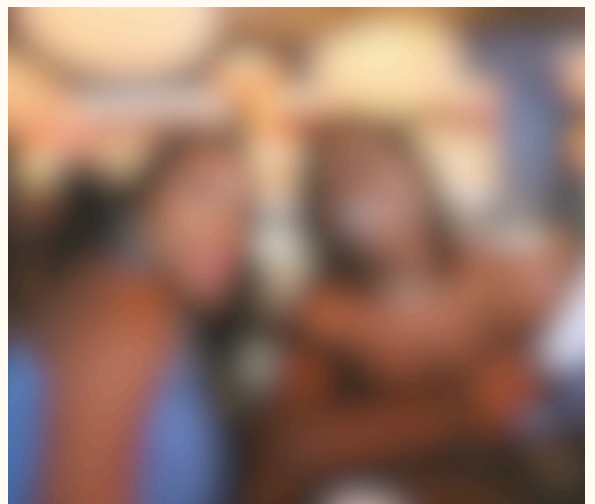
Let's Plan Something Special

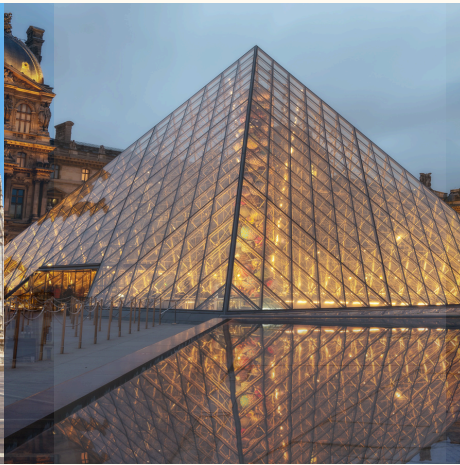
Welcome ladies to your SPECIAL EDITION of Ladies in London, featuring A Splash of Style, and you, of course! I'm thrilled for you to look into the latest scoop of all things exciting, romantic and adventure-bound. Pack your bags and polish your passports because London is calling, and she's bringing along her fabulous bestie: Paris! This trip will be amazing, relaxing, and refreshing. Stay tuned for all the details to help make your trip wonderful.

STOP THE PRESS!

A LEGEND WAS BORN!

Happy Birthday to the one and only Courtney, lighting up the world in every way possible. Let's raise our glasses to celebrate you and the beauty you bring to Sydney every single day. Happy Birthday Courtney.





Milan, Paris, Rome, OH MY!

The best way to visit all 3 via train within 6 days with breathing room is
BACKPACKING THROUGH EUROPE!

Start your adventure in London. We are on the go so, no time to slow down!

Friday, May 23 London. Travel to Milan (via Paris)

Saturday, May 24 Travel to Rome

Sunday, May 25 Travel to Paris

Monday, May 26 Paris.

Tuesday, May 27 Travel to London

Wednesday, May 28 Leave



Milan

PARIS → MILAN ~ 7HRS

The scenic trip through the Alps will be an extra bonus! The beauty, the peace, the nature. *chef's kiss*

Once in Milan, check out the shopping district, marvel at the Duomo di Milano and get ready for the next stop!



Vatican City

MILAN → ROME ~ 4HRS

More beautiful views as we head to the land of love, Italia! Ready for some elegant, historical sights? Tour the Sistine Chapel, eat pasta (well duh) and marvel in Rome before heading back to Paris.



Lodging in London: Fit for a Queen

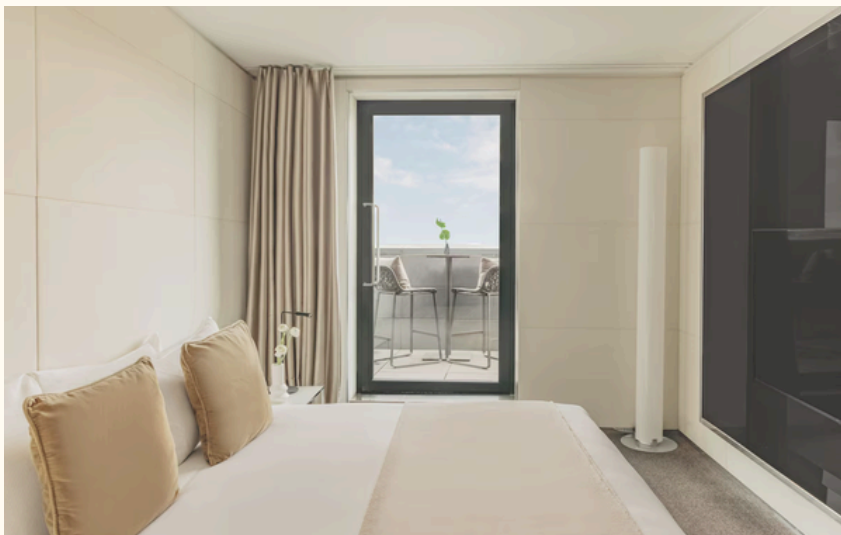


THE HOXTON SOUTHWARK

Price Range:
\$210/night - Standard Room
(Total: ~1300 USD)
\$475/night - Suite Room (Total:
~2800 USD)

SEA CONTAINERS LONDON

Price Range:
\$265/night - Standard Room
(Total: ~1600 USD)
\$397/night - Patio Room
(Total: ~2400 USD)



ME LONDON

Price Range:
\$350/night - Standard Room
(Total: ~2100 USD)
\$475/night - River View Terrace
(Total: ~2900 USD)



Headlines & Highlights

YOUR LONDON TO-DO LIST



London Eye

HOURS:

10 AM - 8:30 PM

Single Pass:

29 GBP (online)

42 GBP (in person)

Anytime Fast Pass:

51 GBP (in advance)

Multi-Attraction Tickets Options:

London Eye

River Cruise

Madame Tussauds

London Dungeon

SEA LIFE London Aquarium

Shrek's Adventure

Hop-on-Hop-off Big Bus Tour

CHELSEA FLOWER SHOW MAY 20-24 SPRING BANK HOLIDAY MONDAY, MAY 26

EXPLORE

Camden Street Market

Spitalfields Street Market

Borough Street Market

Portobello Road Market

Leicester Square / Theatre District

Chinatown (Active at night)

Oxford Street (Shopping)

Harrods (Shopping)

Gravity MAX Wandsworth (Arcade)

Explore SoHo

Hyde Park (Princess Diana Memorial Fountain)

Local Pubs

High Tea River Cruise

EAT

Monika by 805 (West African Seafood)

AKARA (West African - Brazilian Fusion)

AKOKO (West African Fine Dining)

Meli Melo (Halal Fine Dining)

BocaChica (Dominican)

The Watergate (Brunch)

Kahani (Contemporary Indian Menu Tasting)

Sky Garden (Sky Bar)

Dishoom (Indian Comfort Food)

Blossom by Khans (Indian Fine Dining)

Casa do Frango (Portuguese)

Rock & Sole Plaiçe (Oldest Fish & Chips Spot)

Tip: If visiting Tower of London, Westminster Abbey and Buckingham Palace, after visiting the Tower of London, take the ferry or Watertaxi across to Westminster Abbey and then walk through park to Buckingham Palace.





Postcards from Paris

BONJOUR FROM THE CITY OF LIGHT!

This chapter of your adventure is full of romance, charm, and buttery croissants.

**KEY DATES & DETAILS:
SUNDAY, MAY 25
MOTHER'S DAY**



Getting There

Let's take a day trip to Paris!

Head to [Trainline App](#)

You'll look for trains from

St. Pancras International (London)
to **Gare du Nord** (Paris)

This ride is about 2.5 hrs each way

Prices starting ~100GBP each way

1st train to Paris: 8:30am depart
(11:30am arrival)

Last Train from Paris: 9:01pm depart
(10:30pm arrival)

The City of Light Guidebook

Eiffel Tower

Louvre (Closed on Tuesdays)

Musée d'Orsay (Open late Thursday /
Closed on Mondays)

Champs-Élysées (Shopping)

Seine River Cruise

