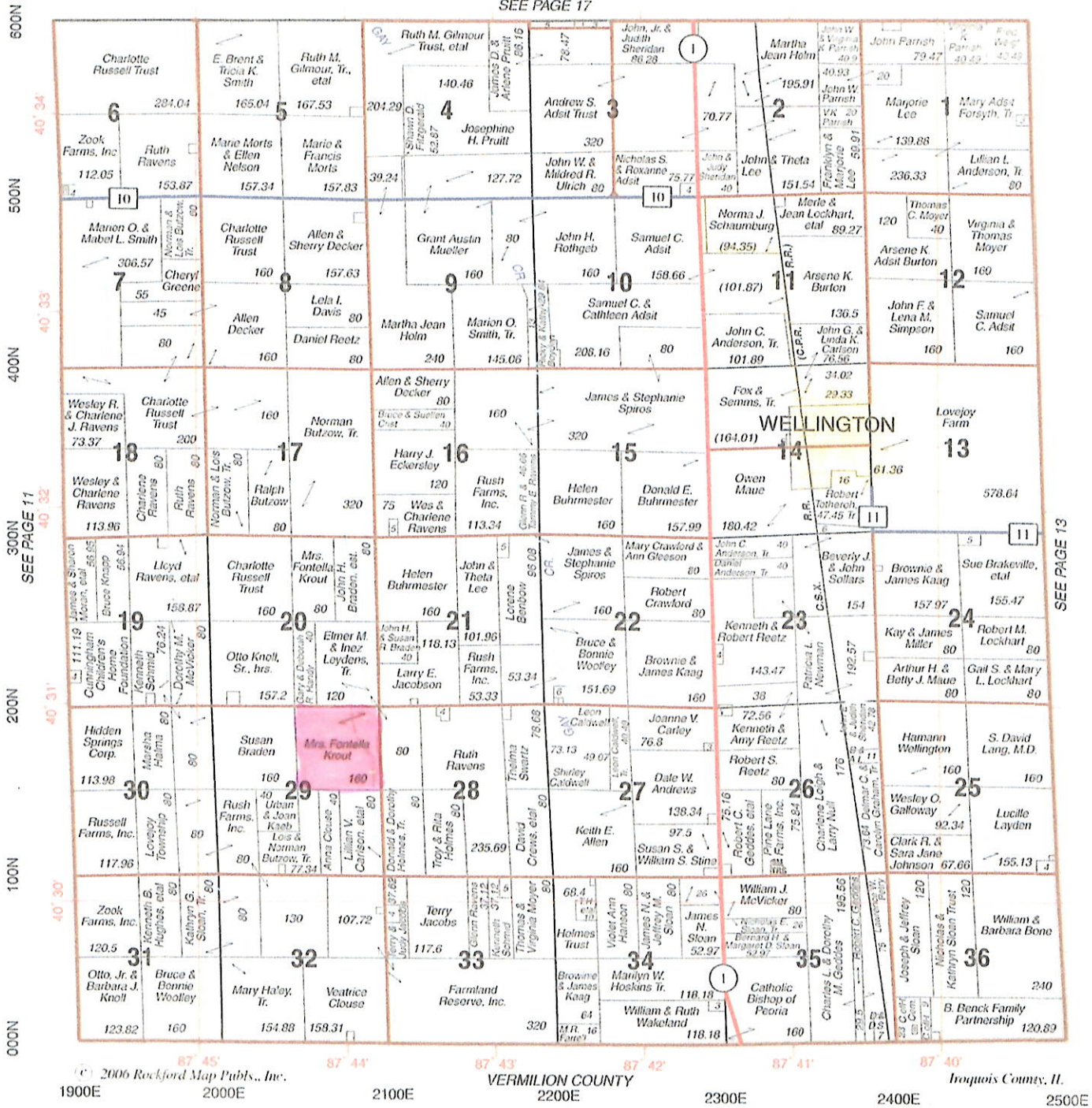


LOVEJOY

T.24N.-R.12W.

SEE PAGE 17



Lorenz Auctions & Real Estate

708-421-0074

www.LorenzAuctions.com

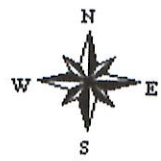
Aerial Map



Map Center: 40° 30' 36.32, -87° 44' 19.14



29-24N-12W
Iroquois County
Illinois

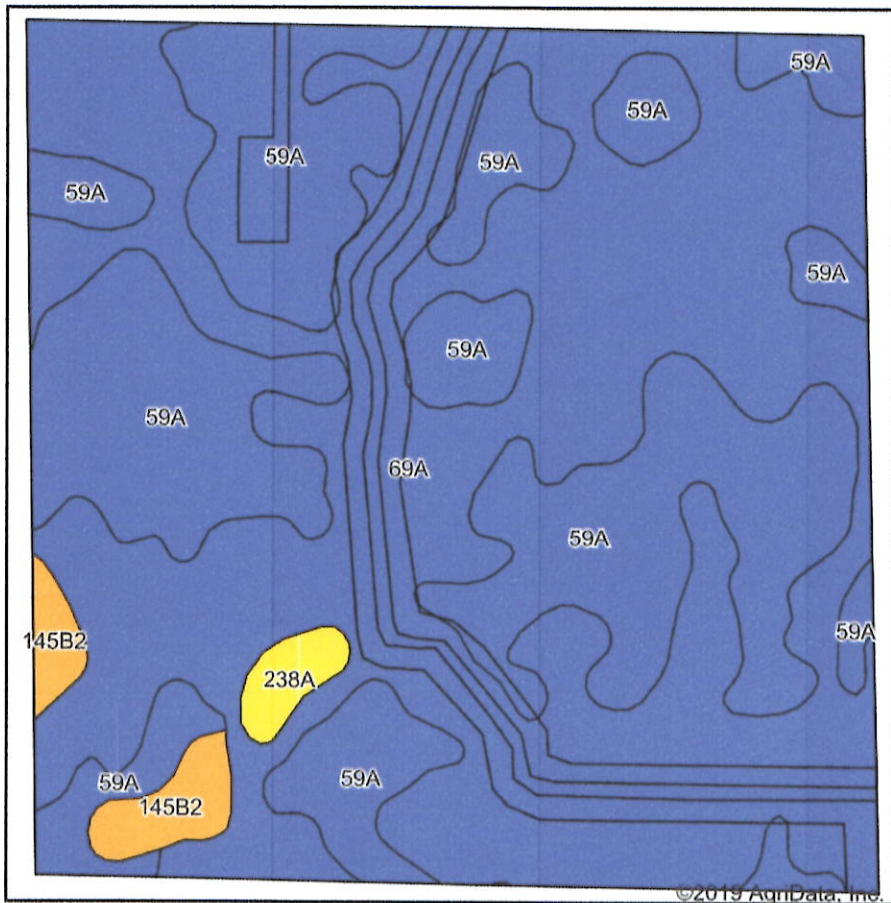


4/13/2020

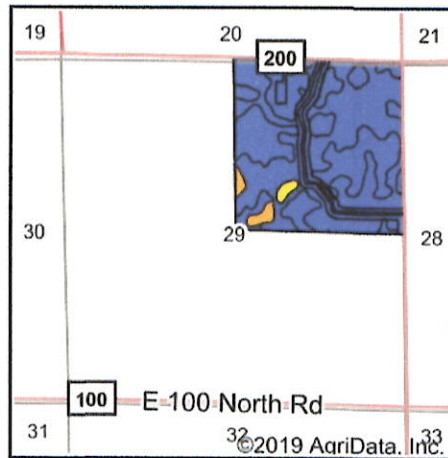
Maps Provided By
surety
CUSTOMIZED ONLINE MAPPING
© AgriData, Inc. 2019 www.AgrDataInc.com

Field borders provided by Farm Service Agency as of 5/21/2008.

Soils Map



Soils data provided by USDA and NRCS.



State: **Illinois**
 County: **Iroquois**
 Location: **29-24N-12W**
 Township: **Lovejoy**
 Acres: **153.75**
 Date: **4/13/2020**

Maps Provided By

 CUSTOMIZED ONLINE MAPPING
 © AgriData, Inc. 2019 www.AgriDataInc.com



Area Symbol: IL075. Soil Area Version: 13													
Code	Soil Description	Acres	Percent of field	Il. State Productivity Index Legend	Subsoil rooting ^a	Corn Bu/A	Soybeans Bu/A	Wheat Bu/A	Oats Bu/A ^b	Sorghum ^c Bu/A	Alfalfa ^d hay, T/A	Grass-legume ^e hay, T/A	Crop productivity Index for optimum management
69A	Milford silty clay loam, 0 to 2 percent slopes	87.35	56.8%	FAV	FAV	171	57	68	88	0	0.00	5.52	128
59A	Lisbon silt loam, 0 to 2 percent slopes	61.38	39.9%	FAV	FAV	188	59	74	104	0	0.00	5.64	136
**145B2	Saybrook silt loam, 2 to 5 percent slopes, eroded	3.42	2.2%	UNF	FAV	**170	**54	**66	**90	0	**5.96	0.00	**125
238A	Rantoul silty clay, 0 to 2 percent slopes	1.60	1.0%	UNF	FAV	144	49	56	64	0	0.00	4.14	109
Weighted Average						177.5	57.6	70.2	94.2	*-	0.13	5.43	130.9

Table: Optimum Crop Productivity Ratings for Illinois Soil by K.R. Olson and J.M. Lang, Office of Research, ACES, University of Illinois at Champaign-Urbana. Version: 1/2/2012 Amended Table S2 B811

Crop yields and productivity indices for optimum management (B811) are maintained at the following NRES web site: <http://soilproductivity.nres.illinois.edu/>

** Indexes adjusted for slope and erosion according to Bulletin 811 Table S3

^a UNF = unfavorable; FAV = favorable

^b Soils in the southern region were not rated for oats and are shown with a zero "0".

^c Soils in the northern region or in both regions were not rated for grain sorghum and are shown with a zero "0".

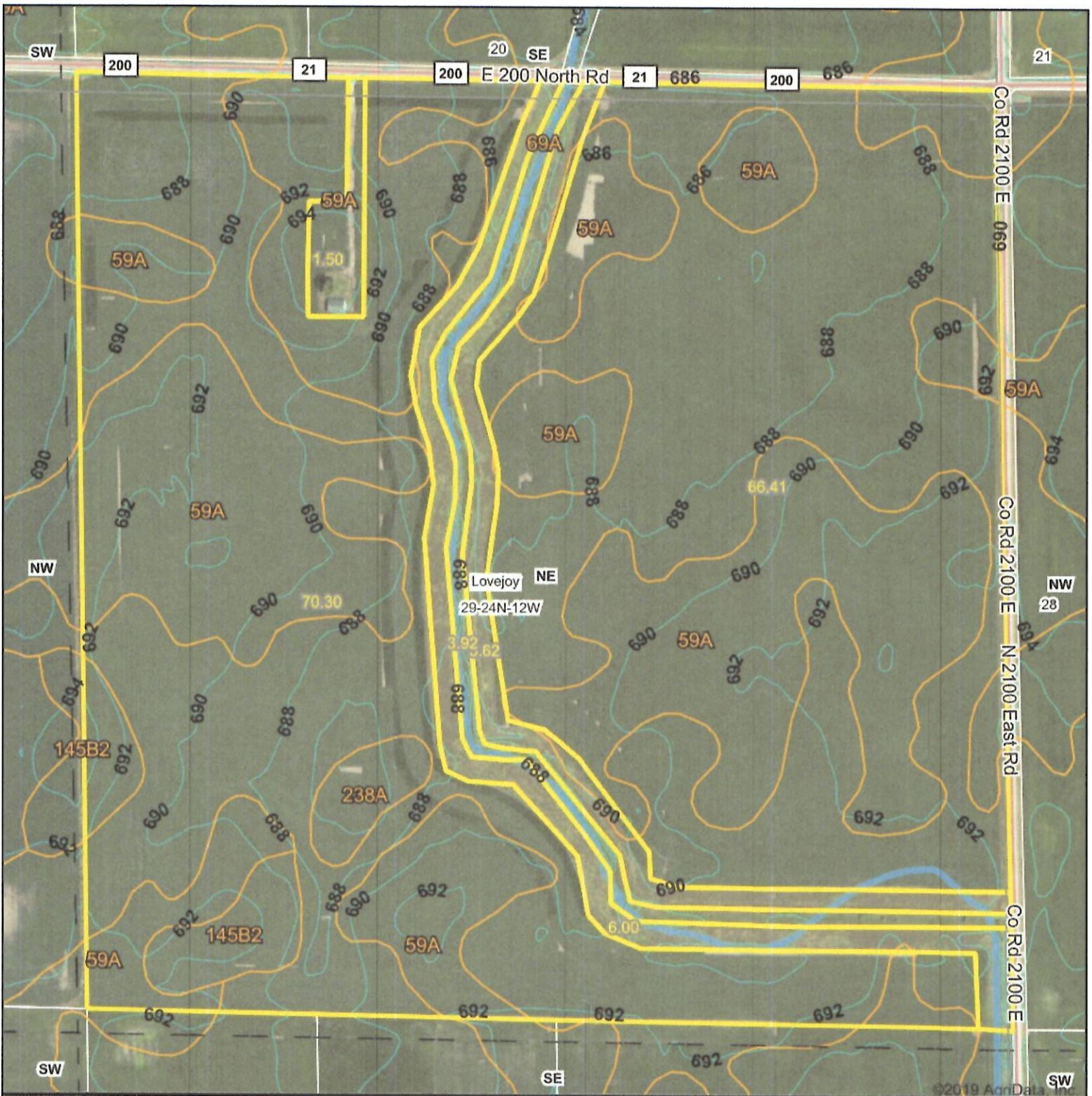
^d Soils in the poorly drained group were not rated for alfalfa and are shown with a zero "0".

^e Soils in the well drained group were not rated for grass-legume and are shown with a zero "0".

*c: Using Capabilities Class Dominant Condition Aggregation Method

Soils data provided by USDA and NRCS. Soils data provided by University of Illinois at Champaign-Urbana.

Topography Contours



Source: USGS 10 meter dem

Interval: 2.0

Min: 680.0

Max: 695.8

Range: 15.8

Average: 689.2

Standard Deviation: 2.46



29-24N-12W
Iroquois County
Illinois

4/13/2020

Map Center: 40° 30' 36.32, -87° 44' 19.14

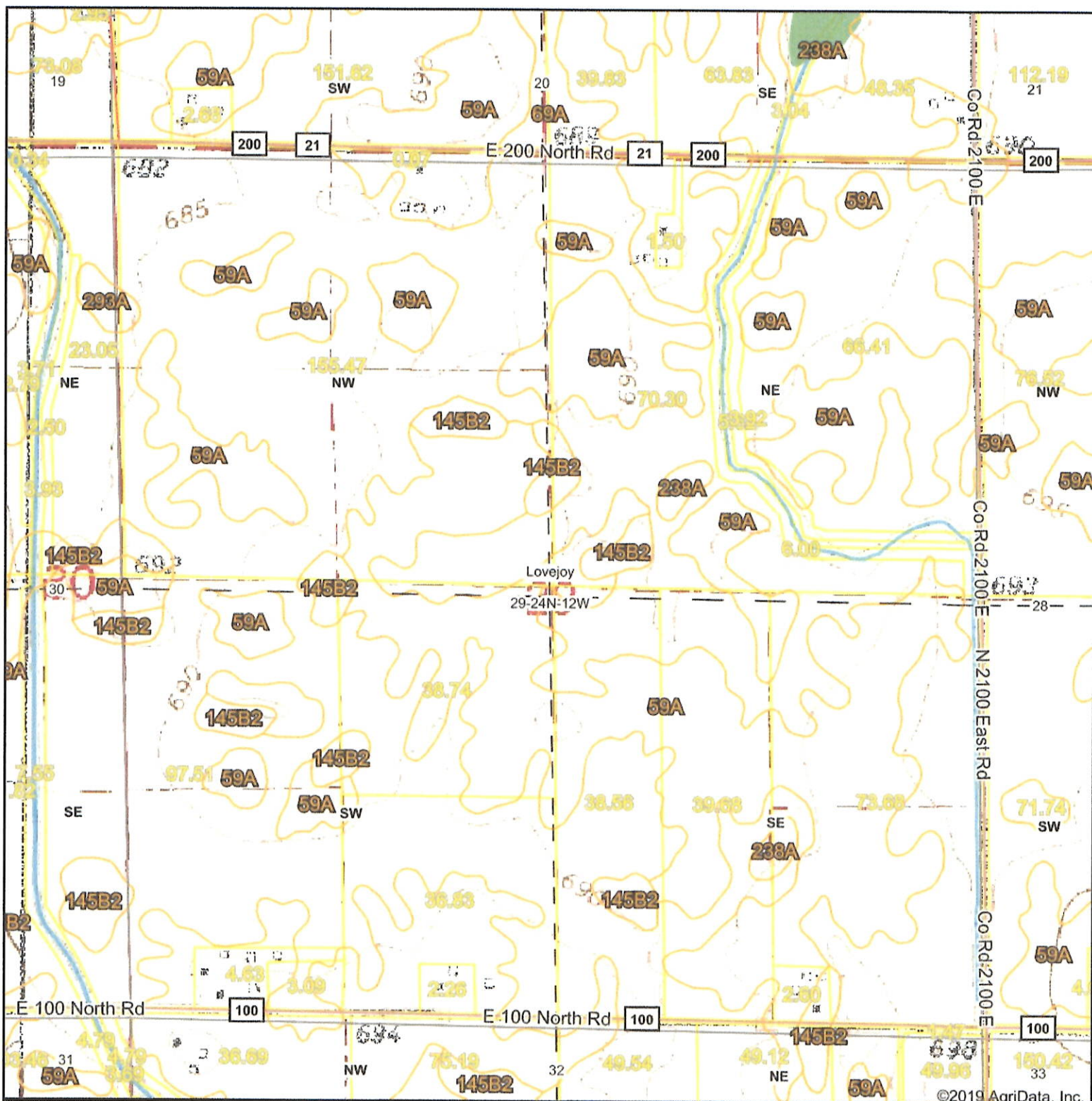
Maps Provided By



© AgriData, Inc. 2019 www.AgriDataInc.com

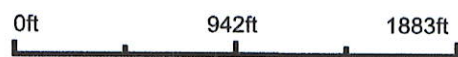
Field borders provided by Farm Service Agency as of 5/21/2008.

Topography Map



©2019 AgriData, Inc.

map center: 40° 30' 36.32, -87° 44' 19.14



29-24N-12W
Iroquois County
Illinois

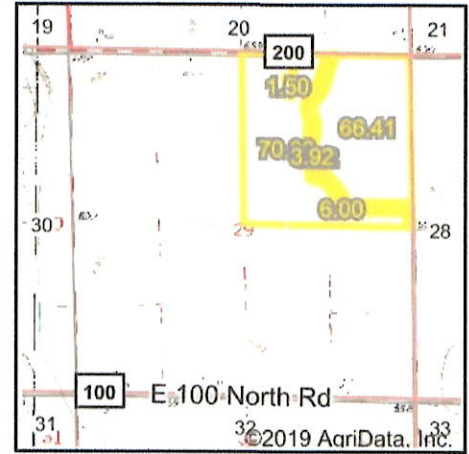
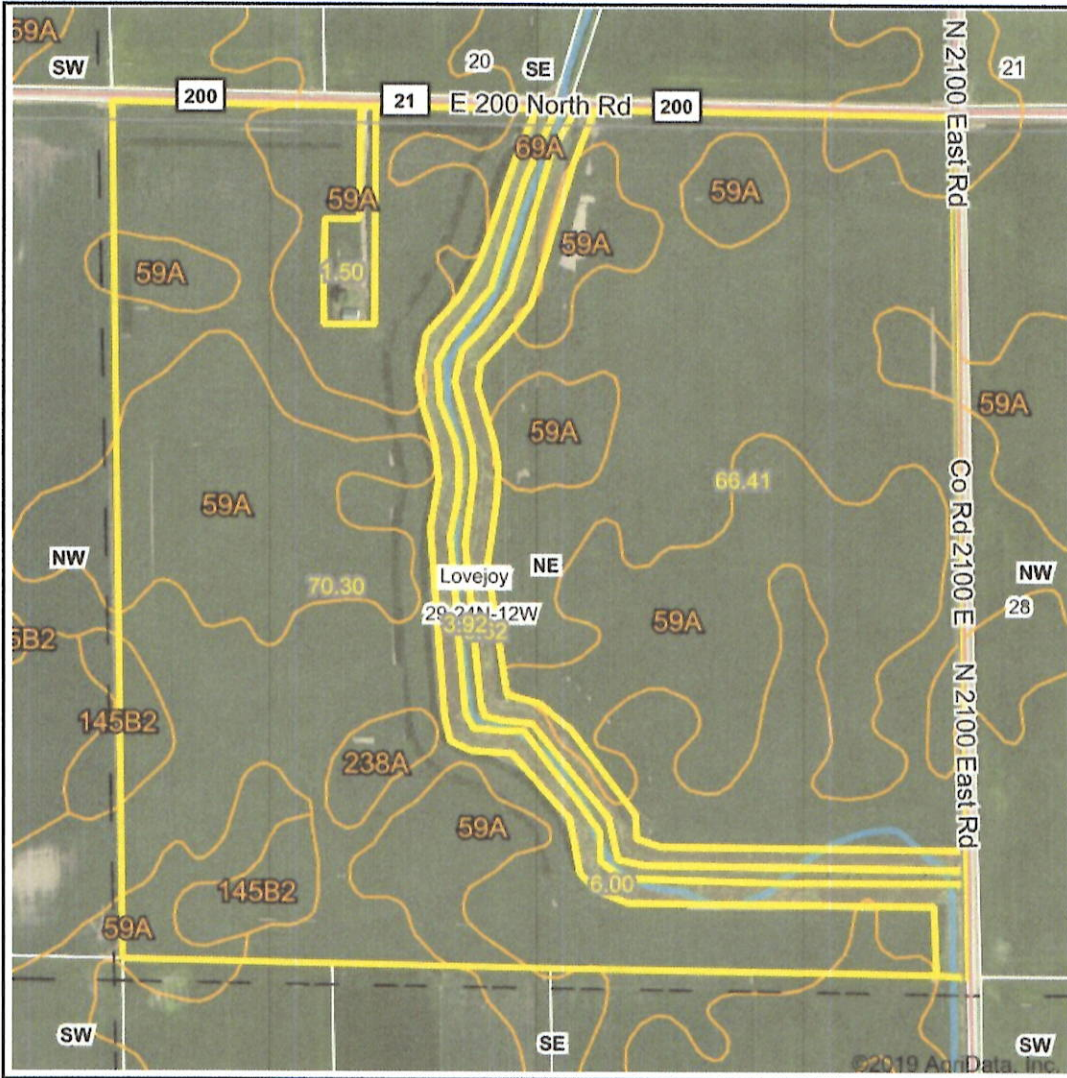


Maps Provided By
surety
CUSTOMIZED ONLINE MAPPING
© AgriData, Inc. 2019 www.AgridataInc.com

4/13/2020

Field borders provided by Farm Service Agency as of 5/21/2008.

Wetlands Map



State: Illinois
Location: 29-24N-12W
County: Iroquois
Township: Lovejoy
Date: 4/13/2020

Maps Provided By

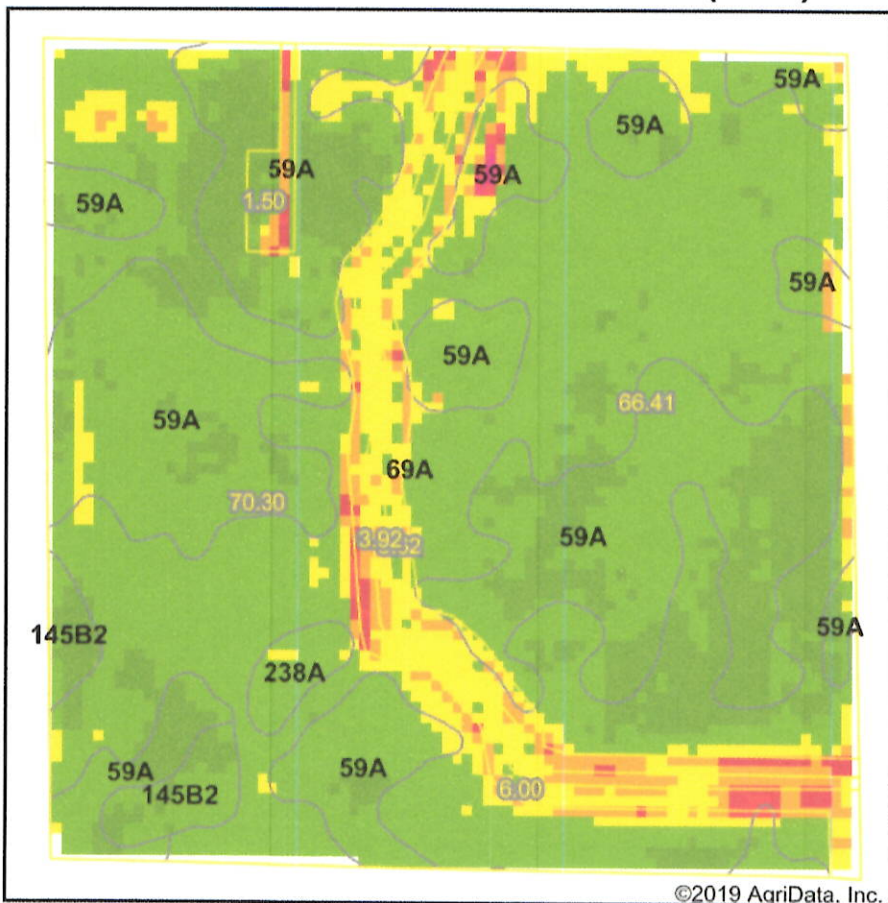
CUSTOMIZED ONLINE MAPPING
© AgriData, Inc. 2019 www.AgriDataInc.com



Classification Code	Type	Acres
R4SBC	Riverine	1.85
	Total Acres	1.85

Data Source: National Wetlands Inventory website. U.S. DoI, Fish and Wildlife Service, Washington, D.C. <http://www.fws.gov/wetlands/>

Max NDVI(2019) with Soils



Low RELATIVE BIOMASS High	Value
Dark Green	86 - 99
Green	81 - 85
Light Green	76 - 80
Yellow	71 - 75
Orange	66 - 70
Red-Orange	61 - 65
Red	51 - 60
Pink	41 - 50
Purple	21 - 40
Dark Purple	1 - 20
Blue	0 - 0

State: **Illinois**
 County: **Iroquois**
 Location: **29-24N-12W**
 Township: **Lovejoy**
 Acres: **153.75**
 Date: **4/13/2020**

Crop:

Com - 90%
 Soybeans - 6%

*USDA CropScape

Maps Provided By



© AgriData, Inc. 2019

www.AgriDataInc.com



©2019 AgriData, Inc.

Soils data provided by USDA and NRCS.

Area Symbol: IL075, Soil Area Version: 13						
Code	Soil Description	Acres	Percent of field	Soil Drainage	Crop productivity index for optimum management	NDVI 2019
69A	Milford silty clay loam, 0 to 2 percent slopes	87.35	56.8%	Poorly drained	128	77.1
59A	Lisbon silt loam, 0 to 2 percent slopes	61.38	39.9%	Somewhat poorly drained	136	79
**145B2	Saybrook silt loam, 2 to 5 percent slopes, eroded	3.42	2.2%	Moderately well drained	**125	80.5
238A	Rantoul silty clay, 0 to 2 percent slopes	1.60	1.0%	Very poorly drained	109	78.6
Weighted Average					130.9	

Table: Optimum Crop Productivity Ratings for Illinois Soil by K.R. Olson and J.M. Lang, Office of Research, ACES, University of Illinois at Champaign-Urbana. Version: 1/2/2012 Amended Table S2 B811

Crop yields and productivity indices for optimum management (B811) are maintained at the following NRES web site: <http://soilproductivity.nres.illinois.edu/>

** Indexes adjusted for slope and erosion according to Bulletin 811 Table S3

*c: Using Capabilities Class Dominant Condition Aggregation Method