



COALDALE RENEWABLE ENERGY PROJECT

INFORMATION SESSION

Please sign in at the registration desk then feel free to check out our display boards and say hello.



Our team is here to provide information about the project, answer questions and listen to your feedback.



ELEMENTAL ENERGY

Elemental is a private, Canadian renewable energy company with over 300 MW of wind, solar, storage, and hydro projects in construction/operations, and over 1,000 MW of projects in development. This includes four operating wind projects in Canada, and six operating solar projects, including five in Alberta. Our project portfolio map is shown below.

OUR VISION

We are committed to projects that generate environmental benefits for the planet, positive social impacts for the communities in which we work, and long-term financial returns. From greenfield to fully operational, we develop, fund, and acquire renewable energy projects at various stages of development.

OUR TEAM

Elemental is an entrepreneurial team of individuals with diverse backgrounds in energy, finance, and project development. The team brings a track record of executing complex transactions, building successful projects, and developing lasting partnerships.





McCain Foods

McCain Foods is a Canadian, family-owned company, leader in the frozen food industry and the world's largest processor of French fries and specialty potato products. McCain has a presence in over 160 countries and a global team of 22,000 people, with five production facilities in Canada and over 2,400 employees. In Alberta, the Coaldale Processing Plant has been in operation since 2000 and is expanding to double its capacity in 2025.

McCain Sustainability

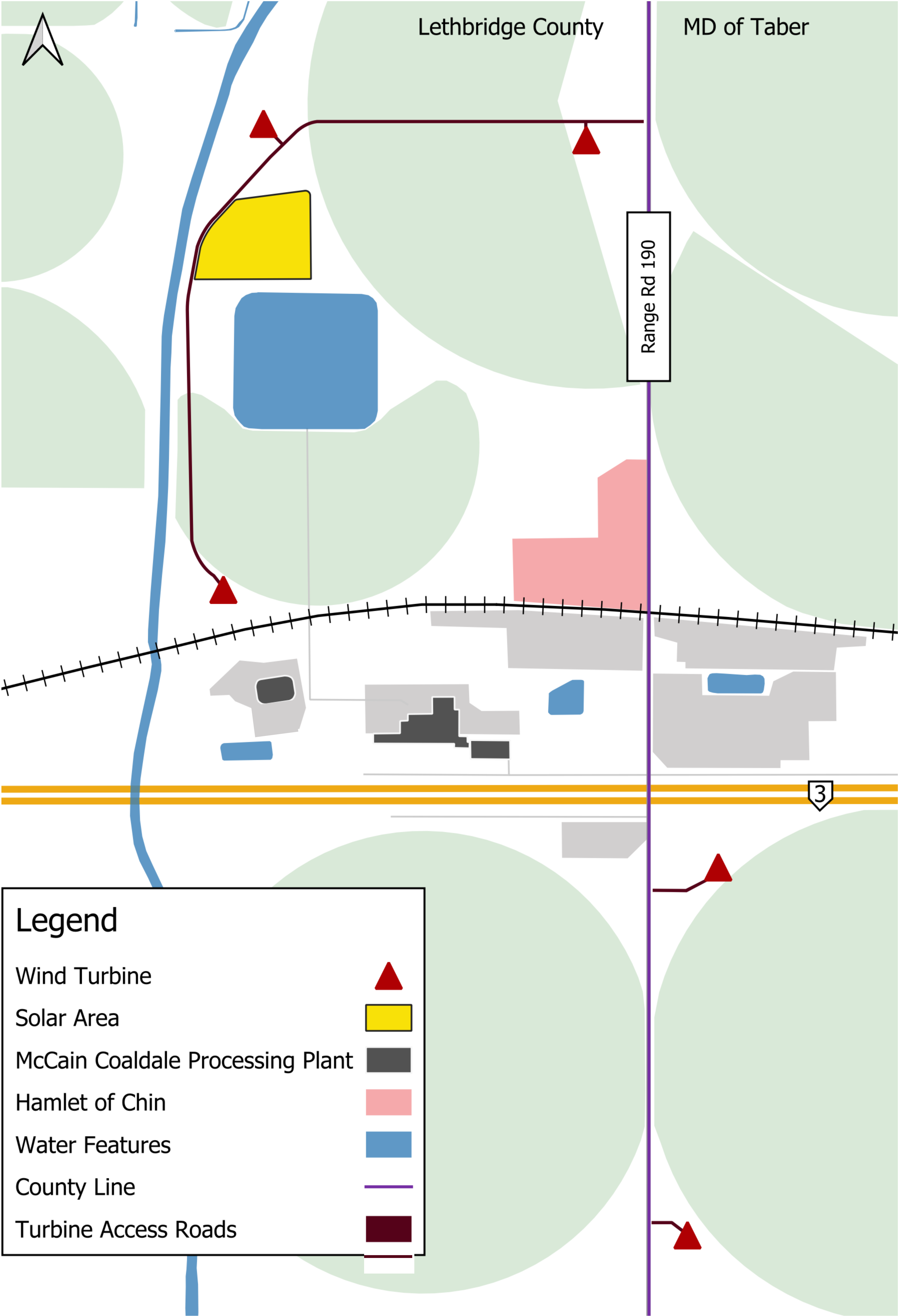
At McCain Foods, sustainability goes to the heart of our purpose as a business: *celebrating real connections through delicious planet-friendly food*. We know the importance that food plays in people's lives, the power it has to uplift and bring people, families, businesses and communities together. Our focus is on producing more food while using fewer resources. We must be efficient in our use of energy, water, and packaging, and reduce waste. As a leader in the potato processing industry, we have the scale and opportunity to drive positive change for our business, people and planet.

Investing in Alberta

The Project will connect directly to the Coaldale Plant and contribute to McCain's goals of achieving 100% renewable electricity by 2030. This project leverages Alberta's renewable resources to provide the world with sustainably produced food.



PROJECT MAP



KEY REGULATORY AGENCIES

The Project is seeking approval and consulting with the following organizations.



Alberta Utilities Commission – Regulates all electric utilities and power plants in the province.



Alberta Environment and Protected Areas – Sets guidelines and regulations to protect and enhance Alberta’s environment.



Transport Canada – Responsible for developing policies and program to promote safe and secure transport, including aviation.



Alberta Electric System Operator – Impendent organization managing, planning and operating the provincial electricity market.



Alberta Transportation – Oversees all aspects of the provincial highway system and reviews nearby developments.

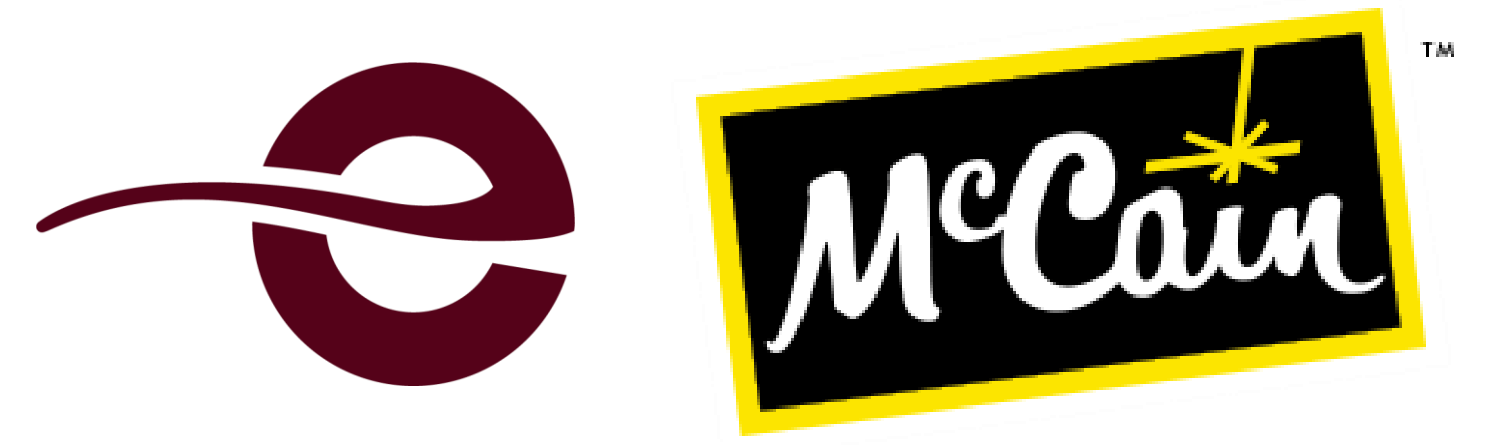


Lethbridge County – Local municipal government responsible for regulating land use activities and providing civic services.



Municipal District of Taber – Local municipal government responsible for regulating land use activities and providing civic services.

ENVIRONMENTAL STUDIES



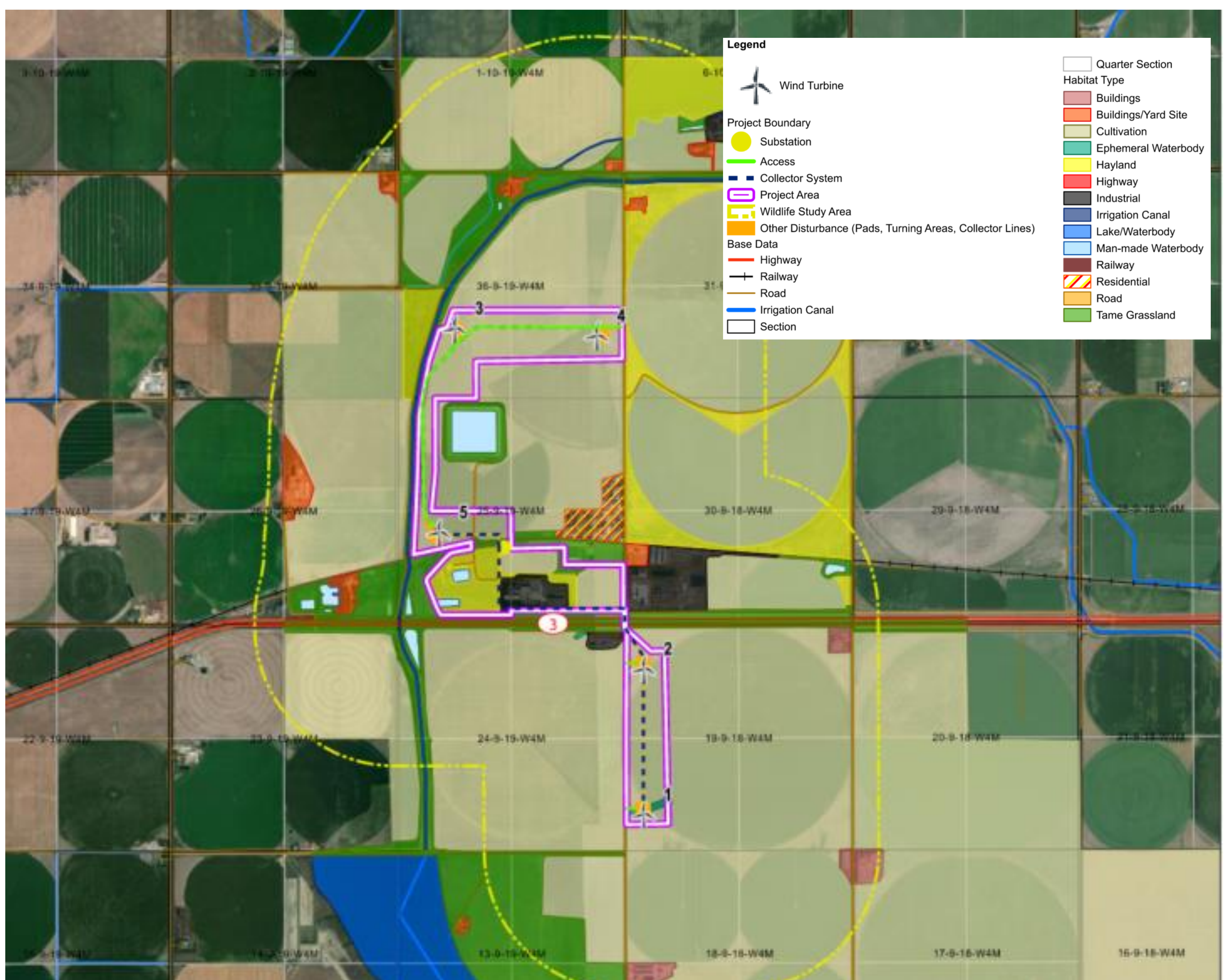
The Project has completed environmental studies to assess the potential impacts to wildlife and wildlife habitat. The Project was designed to avoid sensitive wildlife features and minimize potential impacts to the surrounding environment.

FIELD SURVEYS

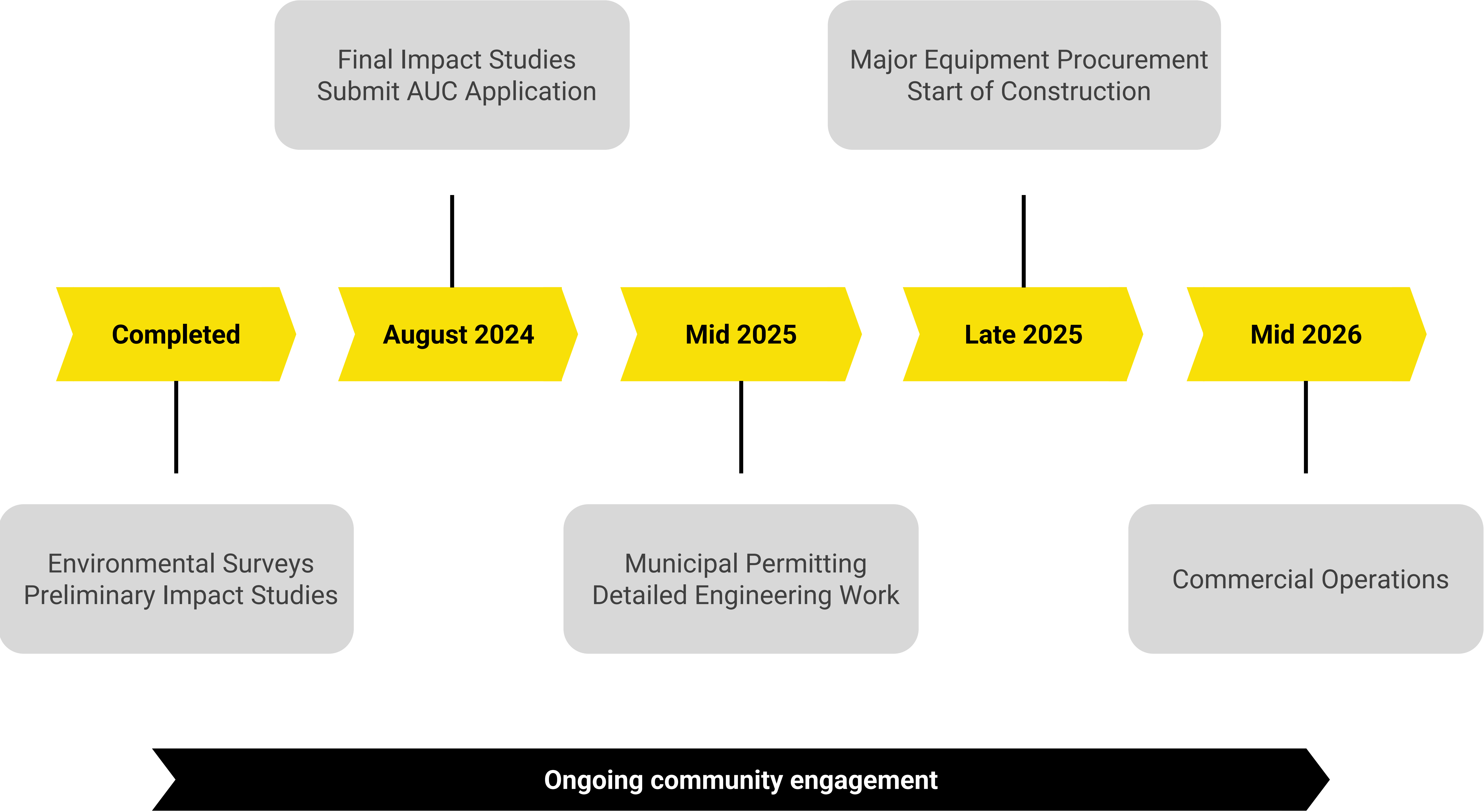
Surveys that have been completed for the project and surrounding area include:

- Vegetation and wetland assessments
- Wildlife zones identification and sensitive habitat mapping
- Bird migration surveys and raptor nest searches
- Bat acoustic monitoring surveys
- Breeding bird and sharp-tailed grouse lek surveys

LAND COVER MAP



PRELIMINARY SCHEDULE



SITING CONSIDERATIONS



RESIDENCES

The project has been sited to minimize or avoid impact to surrounding residences. Noise assessed at a dwelling must be below the limit set by AUC Rule 012: Noise Control. The turbines are sited so that shadow flicker is minimized and below generally acceptable limits.

WILDLIFE FEATURES

Environmental surveys are conducted to assess the local environmental features. Wind turbines must be situated outside setbacks from sensitive wildlife features such as nests and wetlands, and off high value wildlife habitat such as native grasslands and forested areas.

AGRICULTURE CONSIDERATIONS

The project has implemented an agriculture first approach. The turbines and solar panels have been sited in the corner of fields and off the high value irrigated agricultural land.

LAND USE CONSIDERATIONS

Turbines should be positioned a safe distance from provincial highways, municipal roads, or property boundaries.

NOISE STUDIES



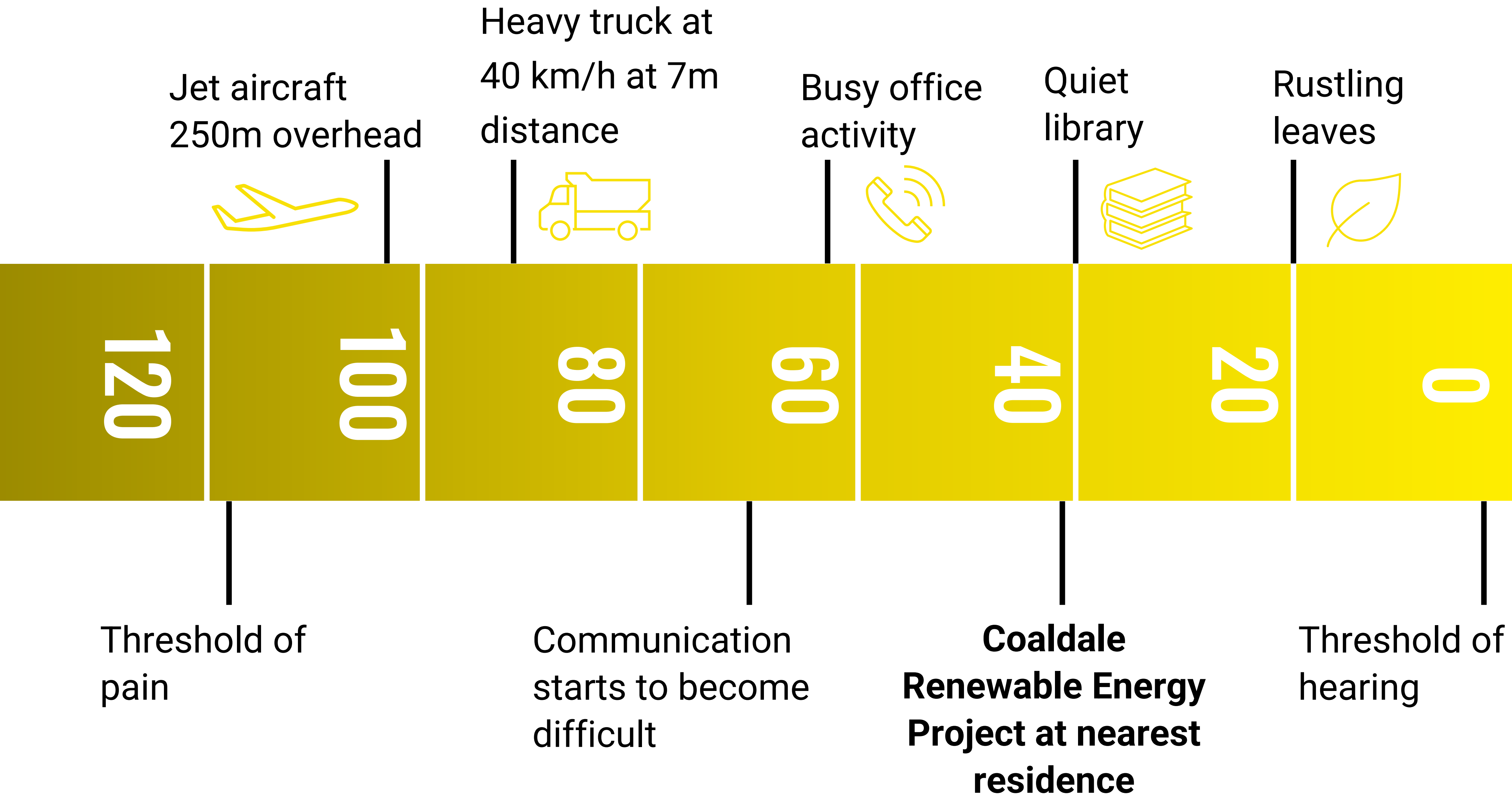
A noise impact assessment for the project was completed to evaluate noise produced by the Project and potential impacts on nearby residences.

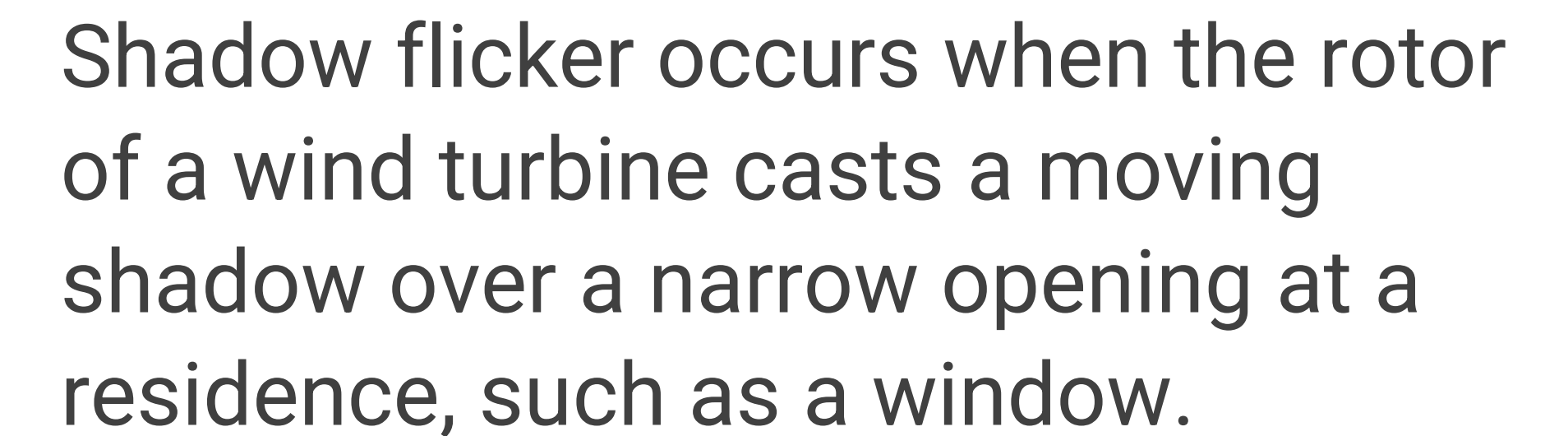
The noise assessment predicts Project noise cumulatively with noise from baseline conditions, to ensure noise does not exceed the permissible sound level determined in accordance with AUC Rule 012.

The maximum predicted sound level from the Project at the nearest residence is comparable to a quiet library.

The results of the noise assessment showed that the Project will be compliant with AUC Rule 012.

SOUND LEVELS (dBA)





The moving shadow can cause the light levels to 'flicker'. The shadow flicker effect can only be experienced inside buildings.

The potential for shadow flicker was modelled using a conservative approach and did not account for existing screening or detailed building/window modelling.

Elemental is committed to addressing concerns related to shadow flicker if they arise.

PROJECT COMPONENTS



WIND TURBINES

The Project will be comprised of 5 wind turbines. These wind turbines will have a hub height of up to 125 m and three blades that are up to 87.5 m long.

SOLAR PANELS

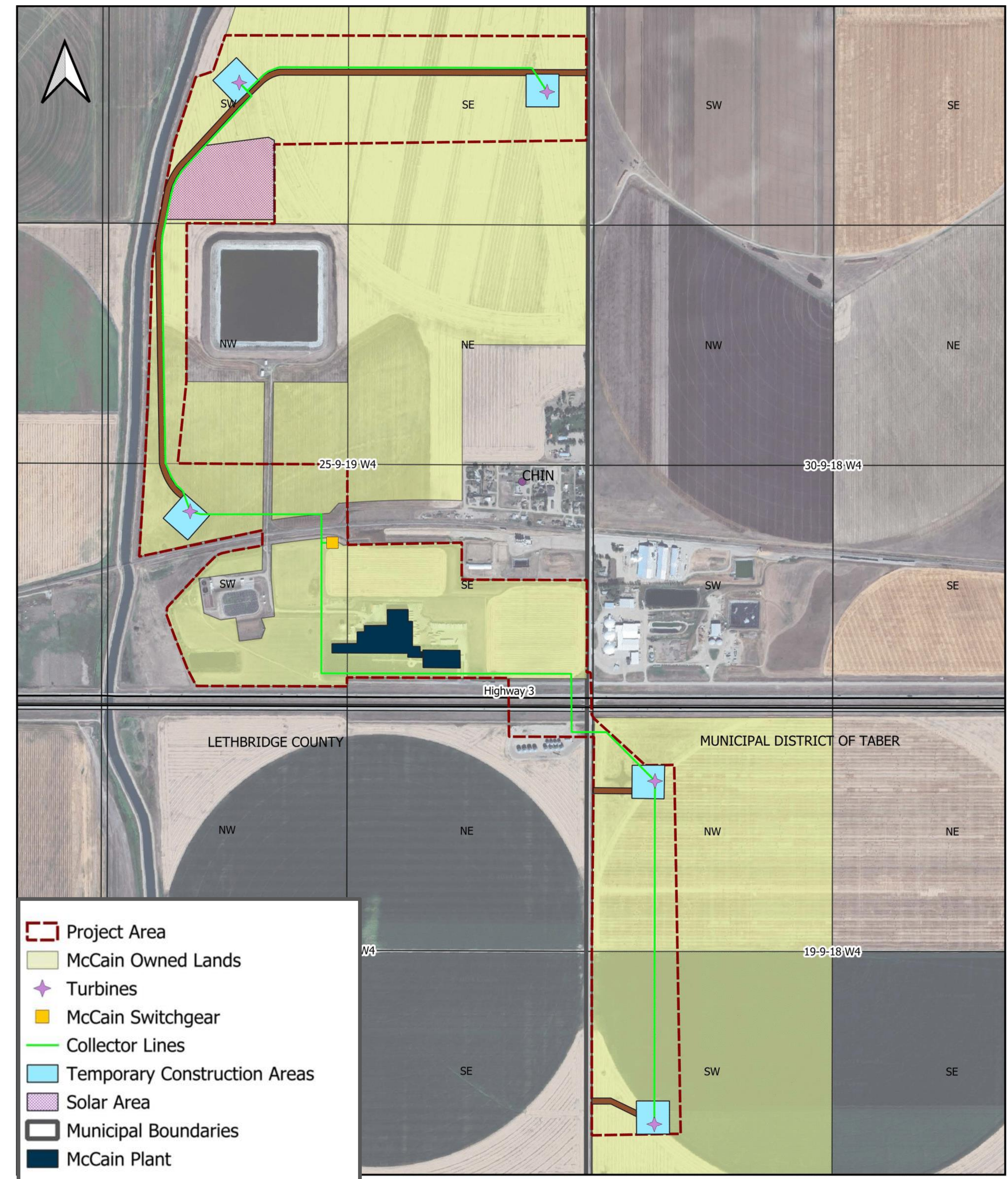
The Project will include up to 5 MW of bifacial solar panels. The panels will stand at approximately 3.5 meters tall and will be placed on fixed tilt racking, supported by steel foundations.

ACCESS ROADS

Access roads, and turbine pads will be required to construct, service and access project turbines. Existing access roads will be used where possible.

CONNECTION TO MCCAIN COALDALE PLANT

Electricity from the solar panels and wind turbines will be collected via underground electrical cables and connect directly to the McCain Coaldale plant.





PROJECT BENEFITS

ECONOMIC OPPORTUNITIES

Construction will result in contracting opportunities for local business in various fields including surveying, civil construction, mechanical and electrical work. We aim to maximize local procurement of gravel, concrete, and other construction materials when possible.

PROPERTY TAX REVENUES

Lethbridge County, the Municipal District of Taber and their constituents will benefit from the millions of dollars in property tax revenue the project will generate over the 20+ year life.

CLEAN ELECTRICITY

The Project will generate electricity with no associated emissions and will offset other high emitting sources of electricity on Alberta's grid. The Project supports McCain's continued investment in their Alberta operations.

EMPLOYMENT

The Project will generate significant employment opportunities including approx. **50 jobs** anticipated to be created during construction and approx. **4 full time** equivalent jobs throughout the 20+ years of operations.



COMMUNITY ENGAGEMENT



We recognize that the support of the community, landowners, local businesses, and government are key to successful projects. This is why we work diligently to provide a variety of engagement opportunities.

ENGAGEMENT TO DATE

- Project Information Newsletter (July 2021)
- Open House (August 2021)
- Personal consultation with stakeholders (Fall 2021)
- Project Information Update Newsletter (June 2024)
- Open House (July 2024)

FUTURE ENGAGEMENT

- Project information update newsletters
- Ongoing consultation with stakeholders
- Ongoing consultation with local government for municipal permitting
- Ongoing consultation with community and business groups
- Contracting and employment opportunities during construction



THANK YOU FOR ATTENDING



We are committed to ongoing dialogue with interested individuals and stakeholders. Please take a moment to complete a **“Feedback Form”** to share your thoughts on the proposed Project.

If you have any outstanding questions or concerns, we invite you to reach out to us at the contact information below to schedule a phone call or to visit your property.

Samantha Brown – Project Consultation Lead

(587) 434-7547

sbrown@sabreenergyconsulting.com

