

DIMENSIONING NOTES

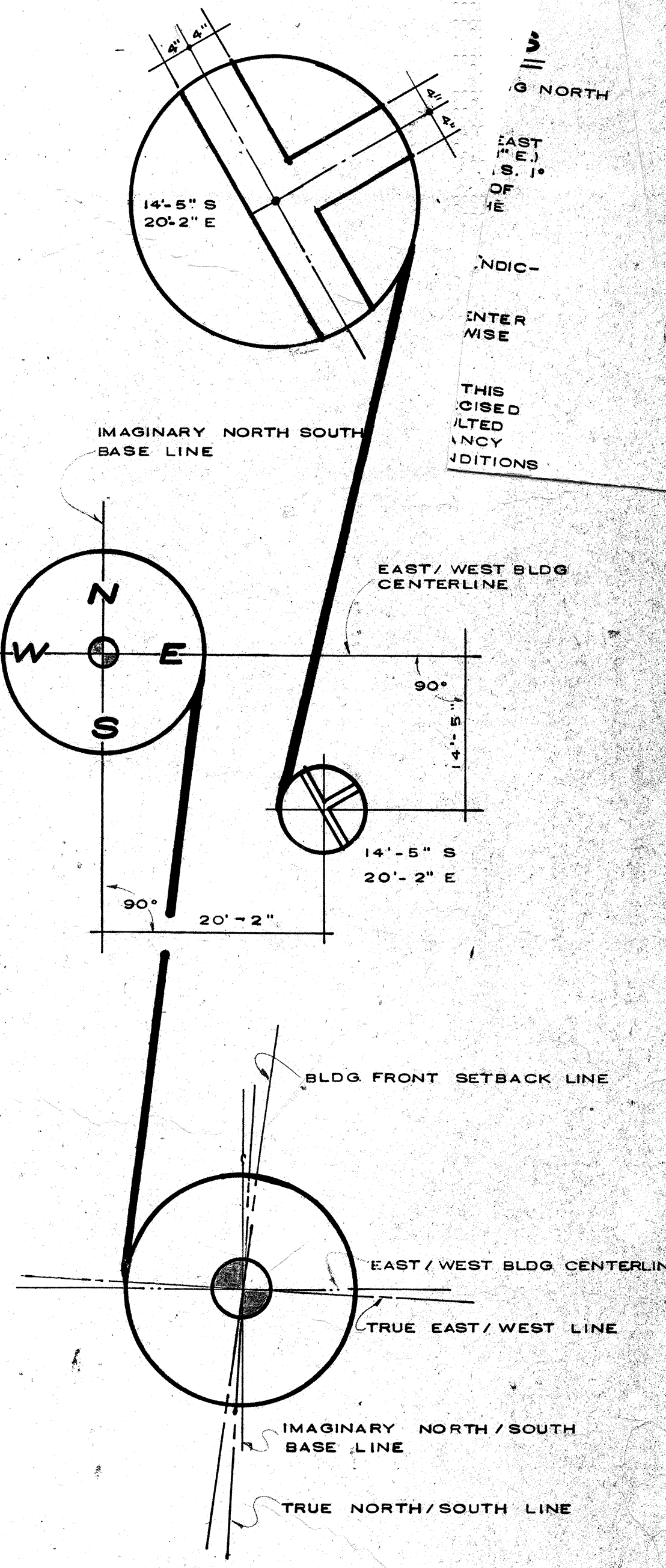
MAJOR DIMENSIONING IS BASED ON A BUILDING SOUTH, EAST, WEST COORDINATE SYSTEM.

BASE LINES FOR THIS SYSTEM ARE: (1) THE E/W BUILDING CENTERLINE (N. 88°09' E. 50'2" E.) PASSING THRU THE INTERSECTION SAID EAST/WEST BLDG. CENTERLINE AND THE FRONT BLDG. SETBACK LINE.

ALL COORDINATES ARE MEASURED PERPENDICULAR TO THESE BASE LINES.

ALL COORDINATES ARE AT INTERSECTING LINES OF MASONRY WALLS UNLESS OTHERWISE NOTED. SEE EXAMPLE BELOW.

DUE TO THE COMPLEX ANGULAR NATURE OF STRUCTURE, EXTREME CARE MUST BE EXERCISED DURING LAYOUT AND THE ARCHITECT CONSULT IMMEDIATELY CONCERNING ANY DISCREPANCY BETWEEN THE PLANS AND ACTUAL CONDITIONS AT THE SITE.



NOTE: ALL CONCRETE BLOCK IS LOAD BEARING WITH NO 5 RODS AT 4'-0" O.C. MAXIMUM WITH BLOCK STACKED AND CELLS WITH RODS FULLY GROUTED USING 3000 PSI CONC. W/PEA ROCK.

	R. WM. CLAYTON JR. ARCHITECT 1995 EAST OAKLAND PARK BLVD. FT. LAUDERDALE, FLA.		DRAWN BY: ACS JOB NO: 8101 DATE: REVISIONS: 8-11-84 8-30-84 ELEV. BASELINE METER RM 9'-6" D. APT. DIM. AS BUILT 2-6-88 SHEET NO: A2
	OVERLOOK CONDOMINIUM		
	FIRST FLOOR PLAN & LOBBY		