

GUIDE TO PROPER OPERATION AND MAINTENANCE OF YOUR FRONT DOOR LOCKING SYSTEM:

1) Operation of the Door:

The door handle should **ONLY** be pressed downward for normal operation, unless you intend to engage the hurricane locking system during a hurricane!



DOOR HANDLE IN REGULAR POSITION.



TO OPEN DOOR

HURRICANE LOCKING SYSTEM:



WHEN YOU PULL UP ON THE HANDLE EITHER INSIDE OF THE DOOR OR OUTSIDE OF THE DOOR, THIS ENGAGES THE HURRICANE RODS. AS ANY MECHANICAL LOCKING SYSTEM CAN BREAK OR MALFUNCTION, DO NOT PULL UPWARD ON YOUR FRONT DOOR HANDLE UNLESS YOU WANT HURRICANE PROTECTION! THIS SYSTEM IS ONLY FOR HURRICANES AND CAN POTENTIALLY CAUSE LOCKOUTS IF IT BREAKS.

2) Maintenance of Your Doors Locking System:

SIW RECOMMENDS THAT THE FRONT DOORS AND HINGES BE CLEANED AND WAXED EVERY 6 MONTHS. THIS IS PART OF THE ASSOCIATION DUTIES AND WILL BE PERFORMED EVERY 6 MONTHS BY THE OVERLOOK MAINTENANCE TEAM.

SIW RECOMMENDS THAT THE DOOR LOCKING SYSTEM – WHERE YOU INSERT THE KEY AS WELL AS THE LATCH NEEDS TO BE CLEANED WITH A SILICONE SPRAY AT LEAST EVERY 3 MONTHS DUE TO THE SALT ENVIRONMENT.

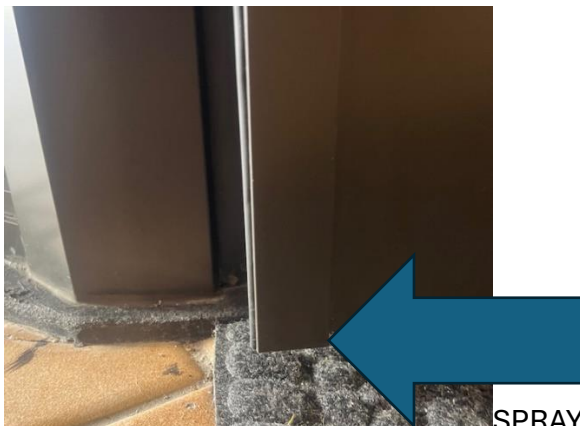
THE MAINTENANCE TEAM WILL LUBRICATE LOCKS EVERY 6 MONTHS WHEN THEY CLEAN AND WAX THE DOORS. THE LOCKS ARE THE OWNER'S RESPONSIBILITY SO PLEASE MAKE SURE TO LUBRICATE EVERY 3 MONTHS IN BETWEEN THE ASSOCIATION MAINTENANCE.



SPRAY SILICONE IN THE KEYHOLE WITH YOUR KEY AND PUT KEY IN AND OUT AND TURN AS YOU SPRAY- THEN WIPE CLEAN



SPRAY SILICONE ON THE LATCH PUSH LATCH IN AND OUT AND WIPE DOWN



SPRAY SILICONE AT THE BOTTOM OF THE DOOR WHERE THE HURRICANE ROD WHILE SPRAYING PUSH THE HANDLE UP AND DOWN TO LUBRICATE THE ROD

3) Repair and Emergency Reach Numbers:

IF THERE IS ANY ISSUE WITH YOUR DOOR YOU CAN CALL SIW DIRECTLY AT 561-446-9904

IF THERE IS A LOCKOUT OR 'EMERGENCY REPAIR, YOU CAN CALL ANTHONY LOCK AT 954-969-8302 24 HOUR LOCKSMITH

BROWARD CENTURY LOCKSMITH 954-427-7008 ONLY OPEN MONDAY – FRIDAY.

D BEST LOCKSMITH 24 HOUR 561-305-1750