

Leslie's Sense & Dispense App Installation Instructions

iOS

Please follow the instructions below to install the Beta version of the Leslie's Pool Supplies mobile app.

Please note:

The Beta version of the application is not available in the AppStore, it can only be installed via the link provided below. The installation requires additional steps to allow launching and running the app, these steps are detailed in this document.

Step 1: Install the application

Using your mobile device, navigate to the following URL:

[install.appcenter.ms/orgs/itops-03e0/apps/leslies-wqm/distribution_groups/beta%20testers%20\(jenco\)](https://install.appcenter.ms/orgs/itops-03e0/apps/leslies-wqm/distribution_groups/beta%20testers%20(jenco))

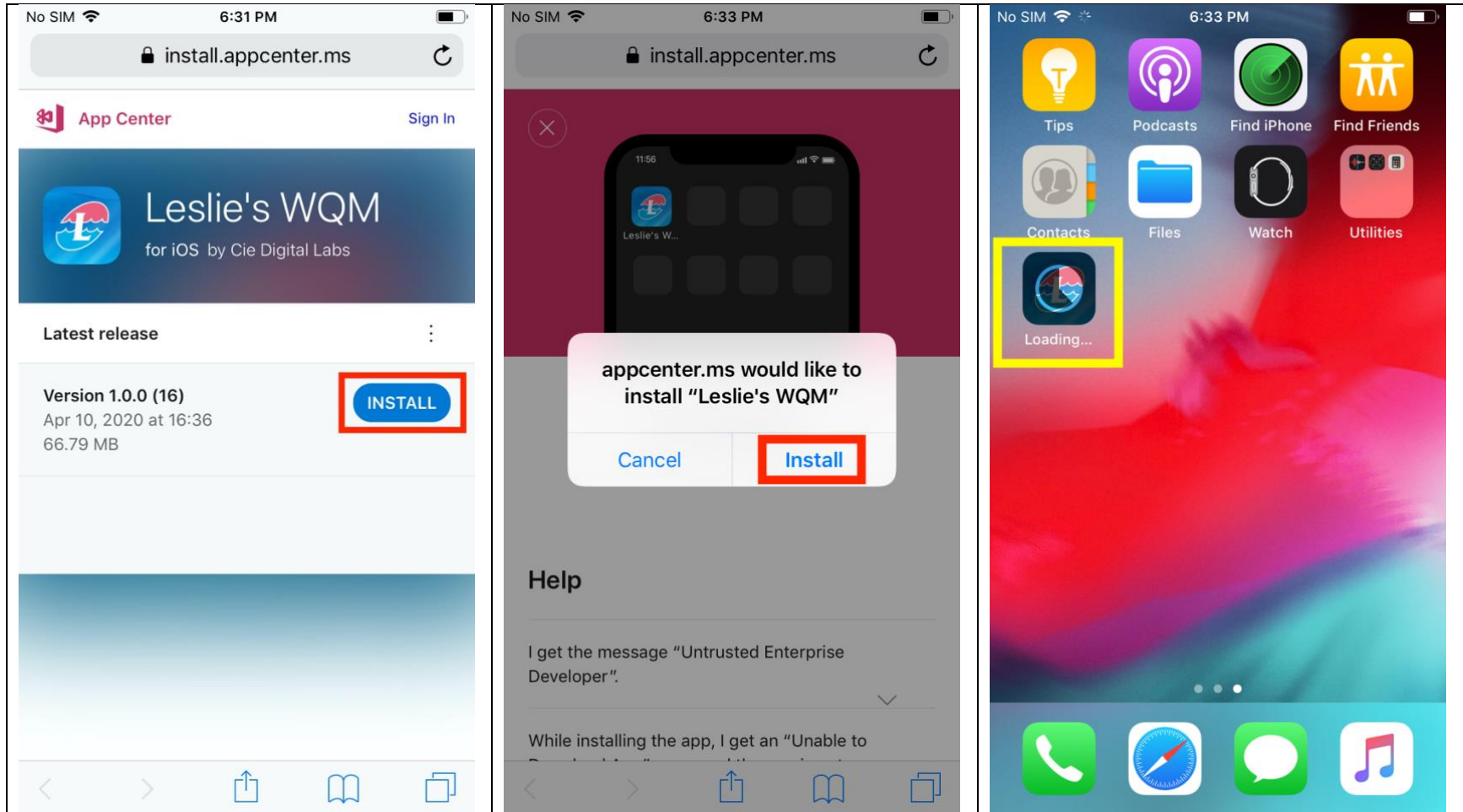
or scan the following QR Code:



On the installation page, press the **Install** button

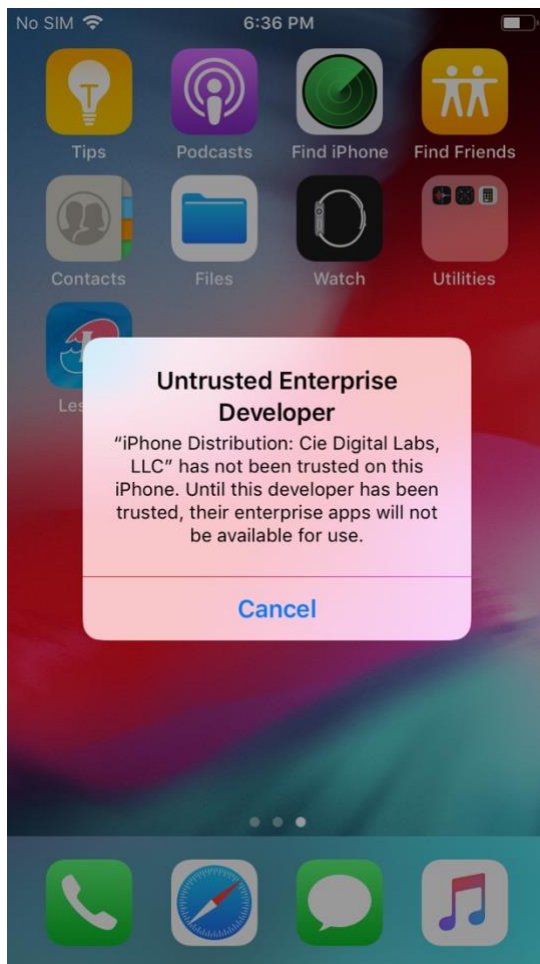
On the next page, wait for the prompt "*appcenter.ms would like to install Leslie's WQM*" to appear and press the **Install** button

After pressing the install button, wait for the app to finish installing on the phone:



Step 2: Trusting the application

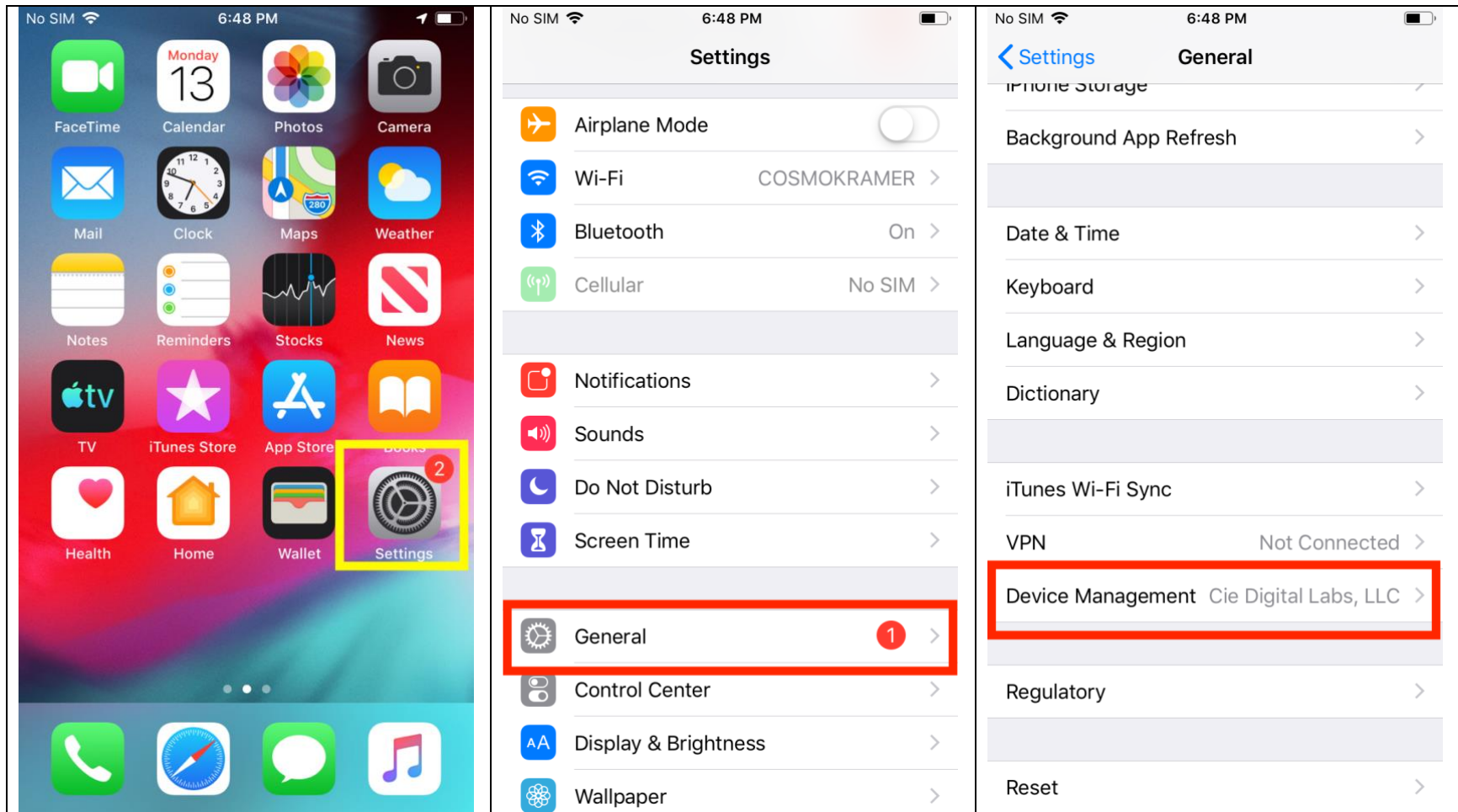
Once the application is installed, it must be “Trusted” before the application will launch. If you attempt to launch the application without trusting, you will get this error:



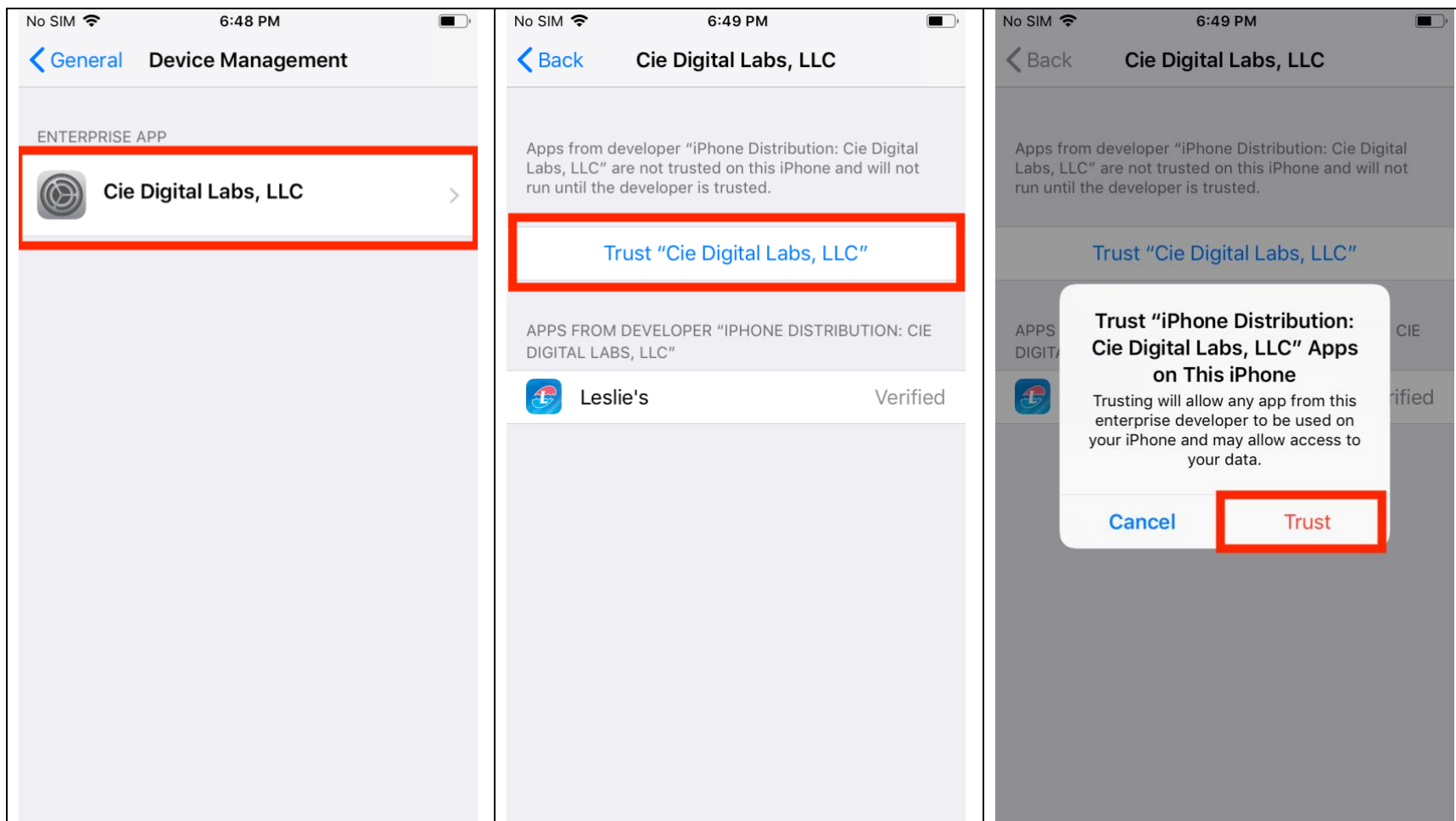
Please follow the steps below to “Trust” the application:

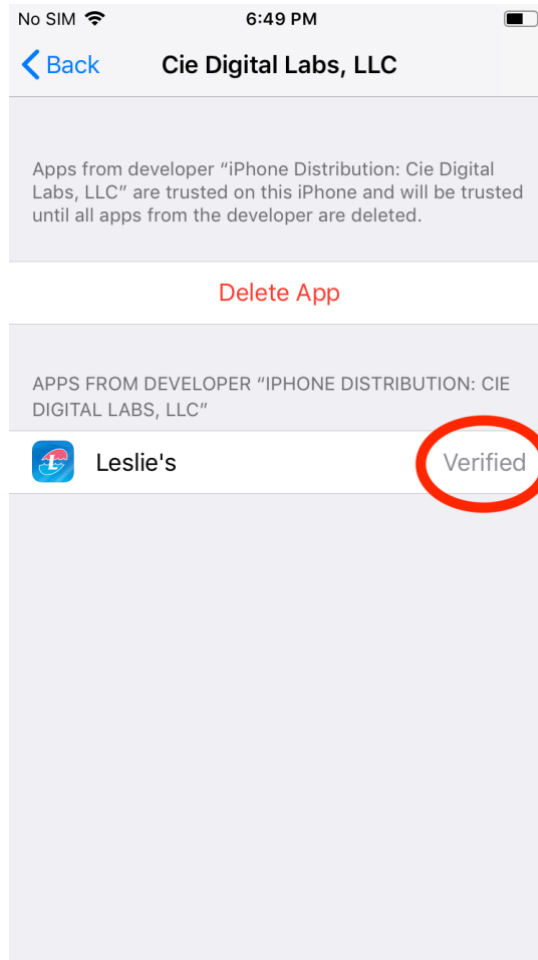
On your phone and navigate to the following: **Settings > General > Profile & Device Management**

Please note: On some devices it may only say “Device Management” instead of Profile & Device Management



On the profile and device management screen, follow the steps below to “Trust” the app. Once trusted, the app will display as “Verified” on that screen:





Installation complete!

You can now launch and use the Leslies Beta mobile application!