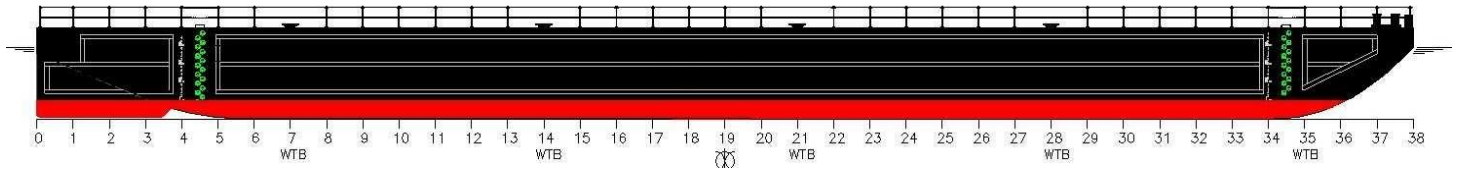




# SWM OFFSHORE LIMITED

-Part of the Sea Wolf Marine Group-

## SWM 250

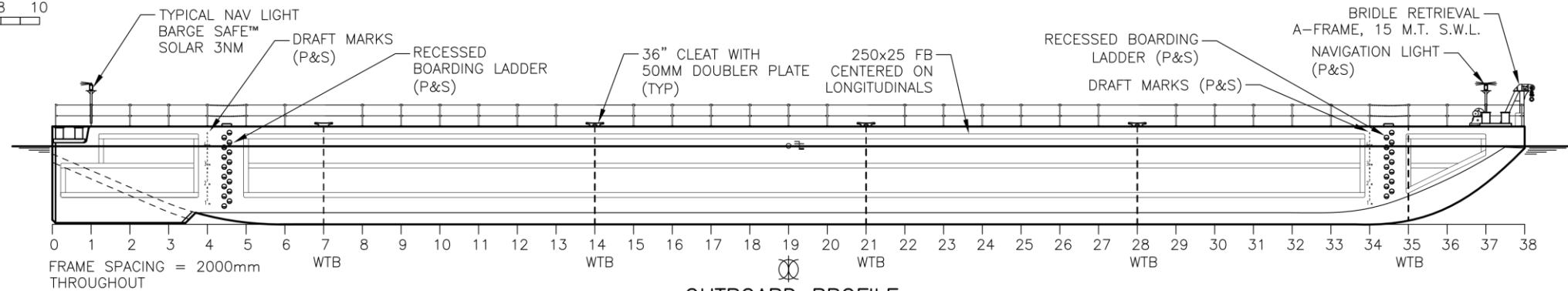


### Specifications

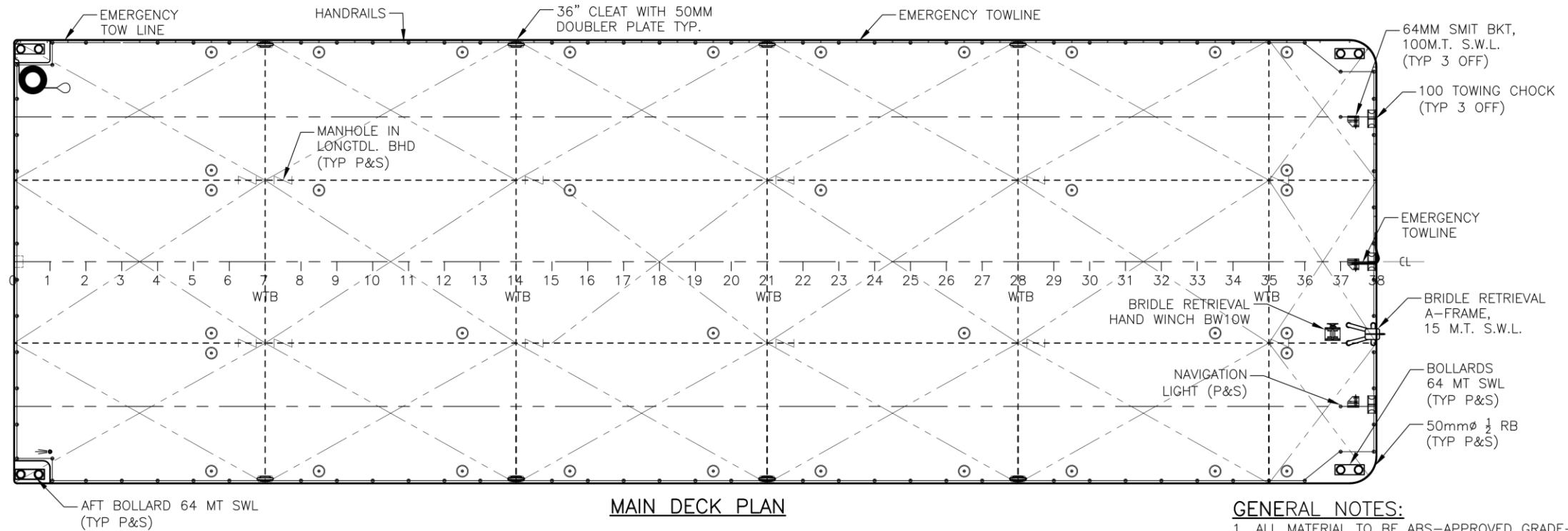
Type:	Heavy Deck Cargo Barge - Ballastable
Classification:	ABS + A1 BARGE
Year Built:	2015
Length:	76.0 m (249'-4")
Breadth (moulded):	24.5m (80'-5")
Depth (moulded):	5.0m (16'-5")
Load Line (estimated):	3.99m (13'-1")
Deadweight (estimated):	5,500 MT (6,060 tons)
Deck Strength:	20 MT per m <sup>2</sup> (4,100 lb per ft <sup>2</sup> )
Hull Plating Thickness:	Deck plating 18mm; bottom & side shell plating 12mm; All welding continuous throughout
Interior Coating:	All voids fully epoxy coated, suitable for ballasting
Fendering:	250 x 25mm flat bar fenders
Outfitting:	Bollards - 64mt SWL on each corner; 36" cleats with 50mm doubler plate; 64mm SMIT brackets – 100mt SWL for main & emergency towing arrangements; fitted with chain bridles and pennant chain - 100mt SWL; Quick release manholes – recessed/flush type; Bridle retrieval hand winch and A-frame
Hand Rail Stanchions:	Quick release, twist lock type for easy removal

*Above details believed to be correct but without guarantee.*

0 2 4 6 8 10  
 METRES  
 SCALE = 1 : 250



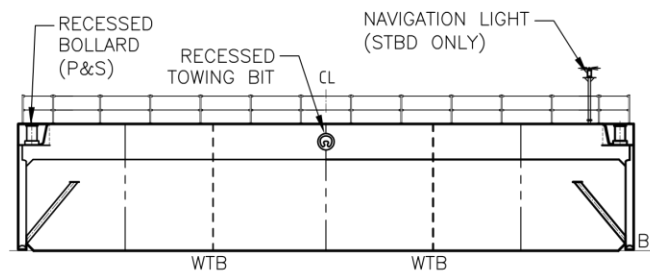
**OUTBOARD PROFILE**



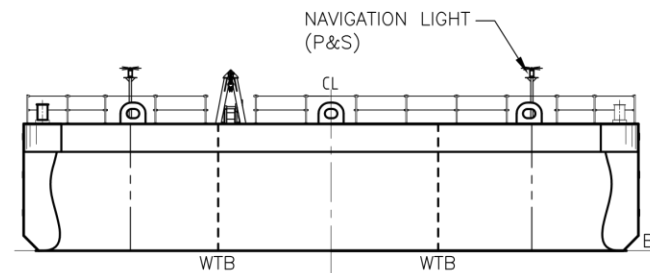
**MAIN DECK PLAN**

**PRINCIPAL PARTICULARS**

LENGTH:	76.0m	(249'-4")
BREADTH:	24.5m	(80'-5")
DEPTH:	5.0m	(16'-5")
EST. L'LINE:	3.99m	(13'-1")
EST. L'SHIP:	1,170 MT	1,290 TONS
EST. DWT:	5,500 MT	6,060 TONS
DECK LOAD:	20 m.t./sq.m.	4,100 PSF
ABS NOTATION:	A1 BARGE	



**STERN VIEW**



**BOW VIEW**

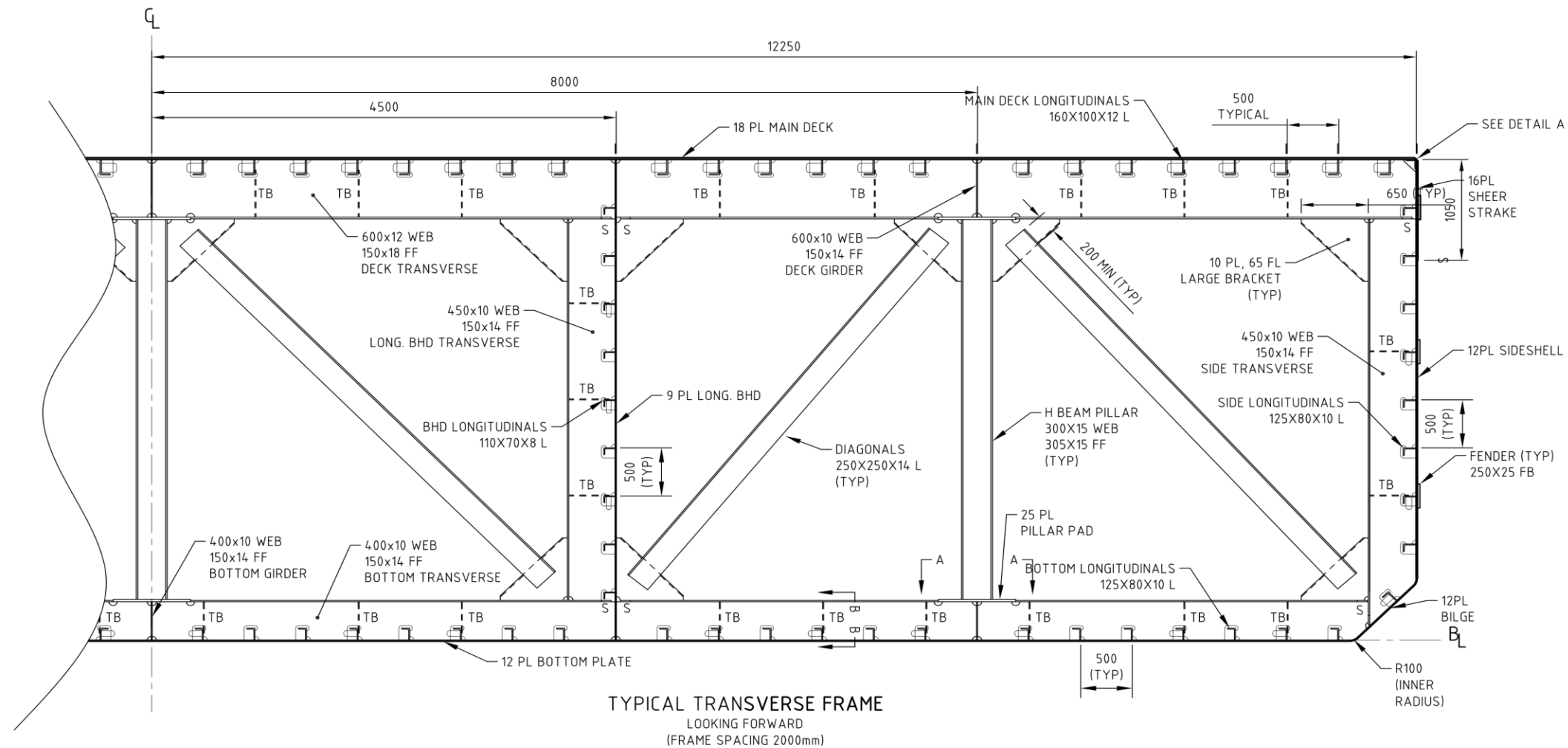
**GENERAL NOTES:**

1. ALL MATERIAL TO BE ABS-APPROVED GRADE-'A' STEEL.
2. BARGE DESIGN AND CONSTRUCTION IN ACCORDANCE WITH AMERICAN BUREAU OF SHIPPING CLASS NOTATION A1 BARGE.
3. ALL VOIDS ARE FULLY EPOXY COATED AND MAY BE BALLASTED.
4. ALL WELDING TO BE CONTINUOUS THROUGHOUT.
5. PERMANENT INTERNAL LADDERS ARE PROVIDED AT EACH MANHOLE FOR INTERNAL ACCESS.
6. ALL MANHOLES IN MAIN DECK AREA TO BE RECESSED / FLUSH TYPE.
7. ALL EXTERNAL LADDERS ARE RECESSED / FLUSH TYPE.
8. BARGE SHALL HAVE CLEARLY PAINTED, RAISED LETTER TYPE METRIC DRAFT MARKS PORT AND STARBOARD, FORWARD AND AFT.

76m HEAVY DECK BARGE  
GENERAL ARRANGEMENT

SHEET SIZE: LEDGER (11x17)

0 1 2  
 METRES  
 SCALE = 1 : 50

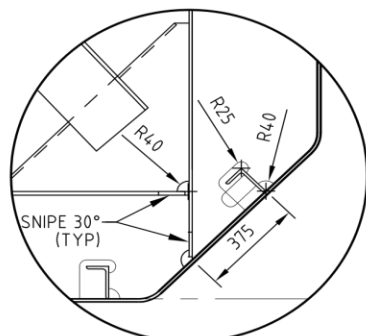


**TYPICAL TRANSVERSE FRAME**  
 LOOKING FORWARD  
 (FRAME SPACING 2000mm)

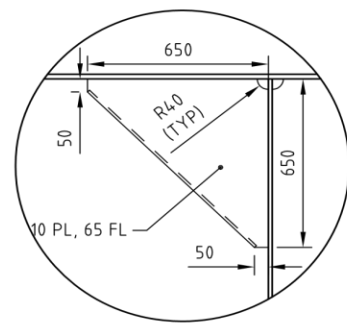
PRINCIPAL PARTICULARS	
LENGTH MOULDED	76.0 m
BREADTH MOULDED	24.5 m
DEPTH MOULDED	5.0 m
LOAD LINE	3.991 m
DECKLOAD	20 mt/m <sup>2</sup>
ABS NOTATION	A1 BARGE
ALL MATERIAL TO BE ABS-APPROVED GRADE "A" STEEL	

PLATING	
DECK	18 PL.
SIDES	12 PL.
SHEER STRAKE	16 PL.
BOTTOM	12 PL.
BILGE STRAKE	12 PL.
T.&L. BHDS	9 PL.
HEADLOG	18 PL.
TRANSOM	20 PL.
SKEG	12 PL.

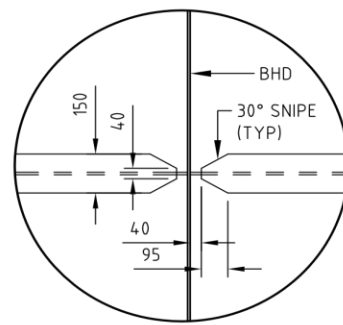
- GENERAL NOTES:**
1. ALL MATERIAL TO BE ABS-APPROVED GRADE-'A' STEEL.
  2. BARGE DESIGN AND CONSTRUCTION IN ACCORDANCE WITH AMERICAN BUREAU OF SHIPPING CLASS NOTATION A1 BARGE.
  3. ALL VOIDS ARE FULLY EPOXY COATED AND MAY BE BALLASTED.
  4. ALL WELDING TO BE CONTINUOUS THROUGHOUT.
  5. PERMANENT INTERNAL LADDERS ARE PROVIDED AT EACH MANHOLE FOR INTERNAL ACCESS.
  6. ALL MANHOLES IN MAIN DECK AREA TO BE RECESSED / FLUSH TYPE.
  7. ALL EXTERNAL LADDERS ARE RECESSED / FLUSH TYPE.
  8. BARGE SHALL HAVE CLEARLY PAINTED, RAISED LETTER TYPE METRIC DRAFT MARKS PORT AND STARBOARD, FORWARD AND AFT.



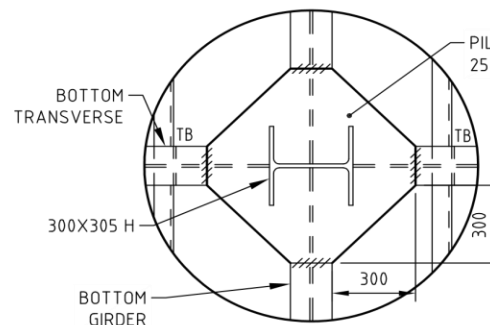
**BILGE LONGITUDINAL CUTOUT**  
 SCALE 1:25



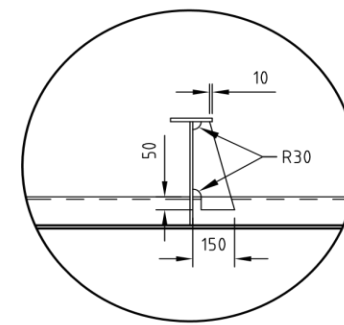
**TYPICAL LARGE BRACKET**  
 SCALE 1:25



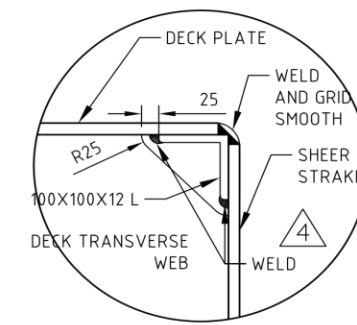
**VIEW C-C  
 BOTTOM TRANSVERSE  
 TERMINATION AT BULKHEAD**  
 SIMILAR FOR DECK GIRDERS  
 SCALE 1:25



**VIEW A-A  
 PILLAR PAD DETAIL**  
 SCALE 1:25



**VIEW B-B  
 TYPICAL TRIPPING BRACKET**  
 SCALE 1:25



**DETAIL A  
 DECK TO SHEER STRAKE CONNECTION**  
 SCALE 1:10

76m HEAVY DECK BARGE  
 MIDSHIP SECTION

SHEET SIZE: LEDGER (11x17)