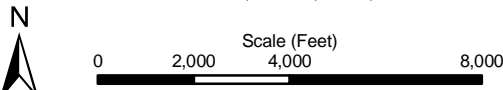


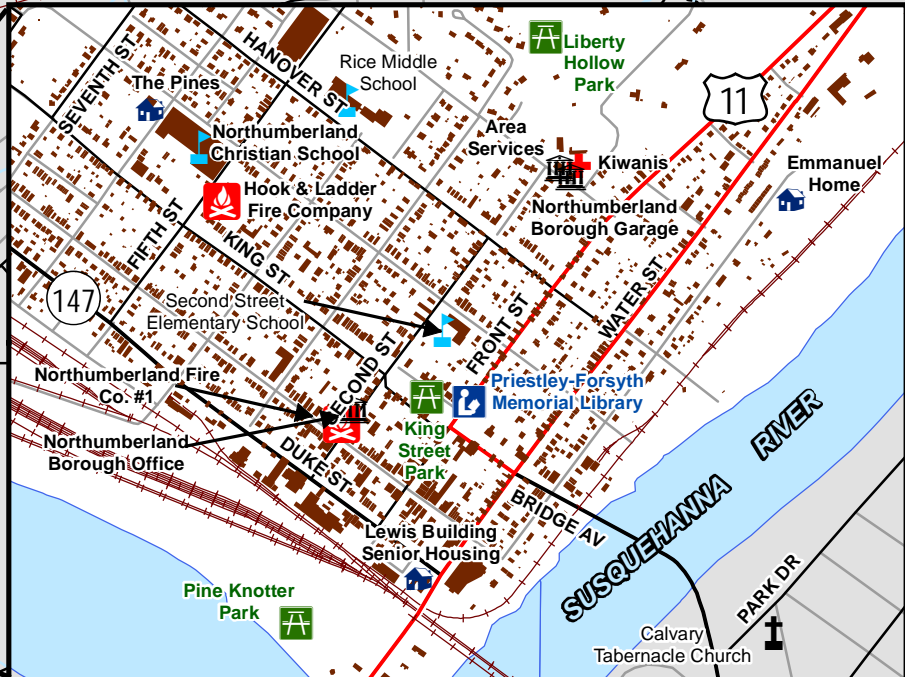
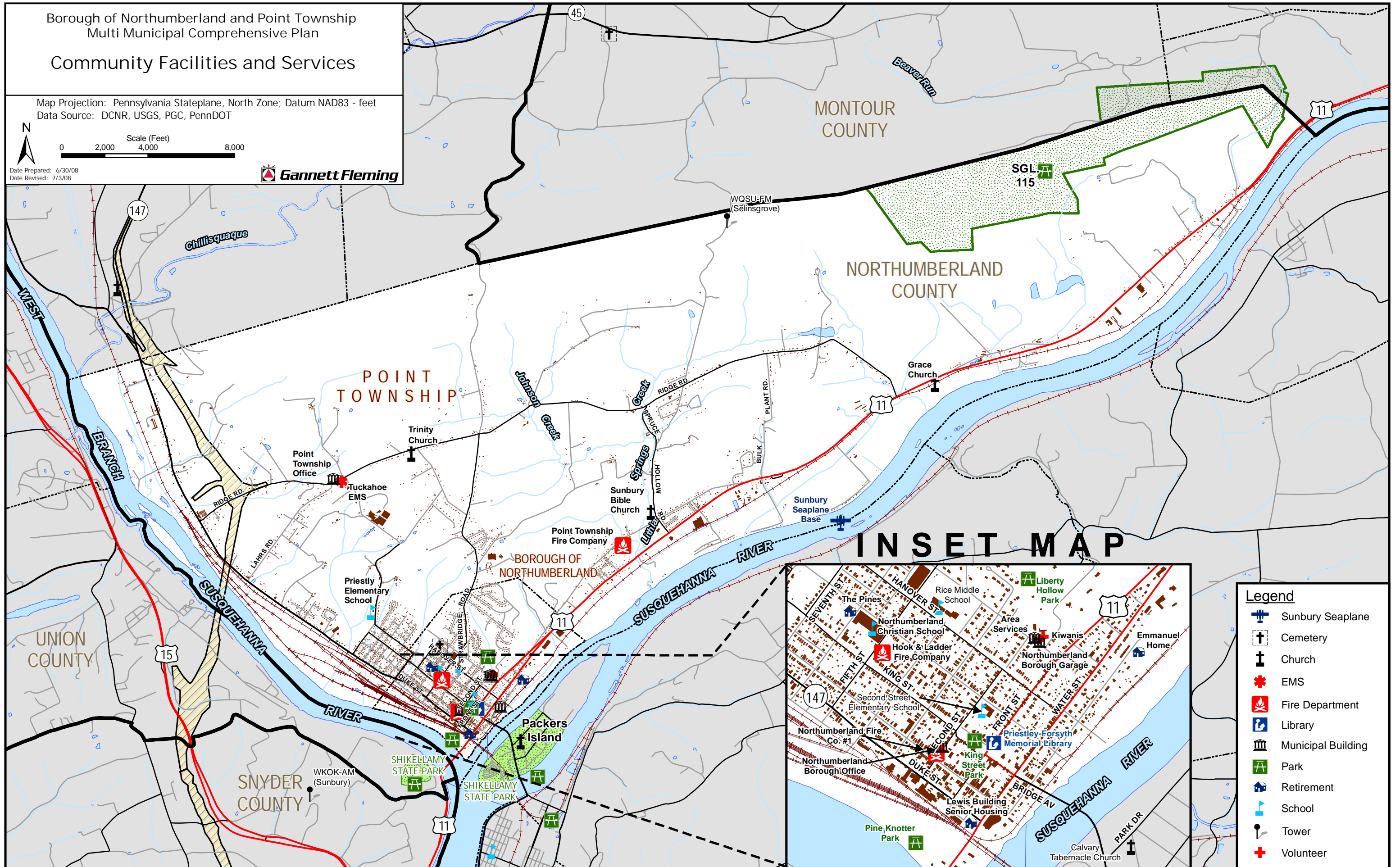
Borough of Northumberland and Point Township  
Multi Municipal Comprehensive Plan

Community Facilities and Services

Map Projection: Pennsylvania Stateplane, North Zone; Datum NAD83 - feet  
Data Source: DCNR, USGS, PGC, PennDOT



Date Prepared: 6/30/08  
Date Revised: 7/3/08

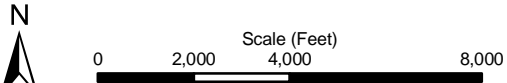


INSET MAP

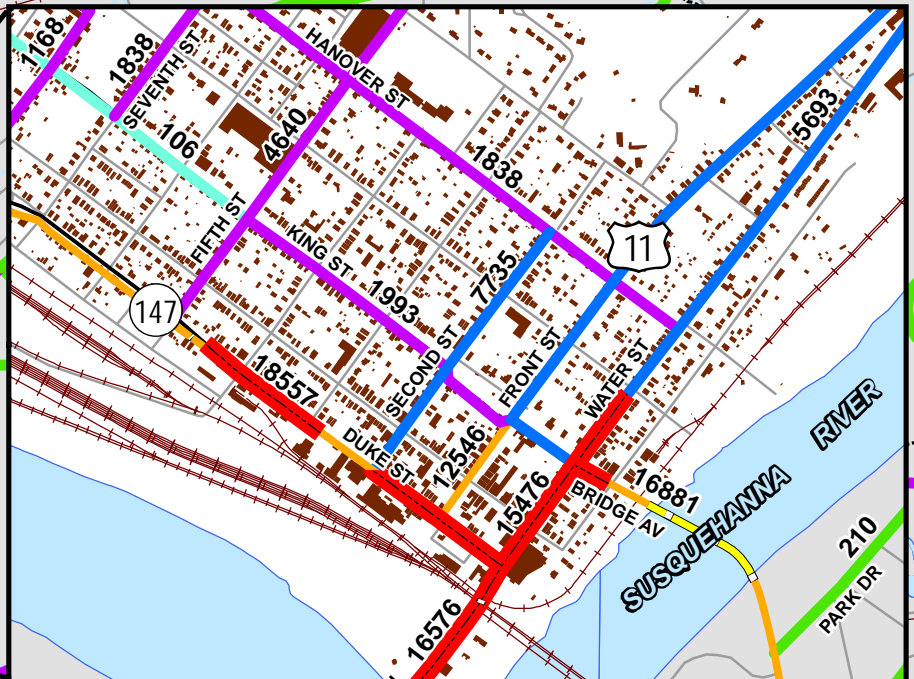
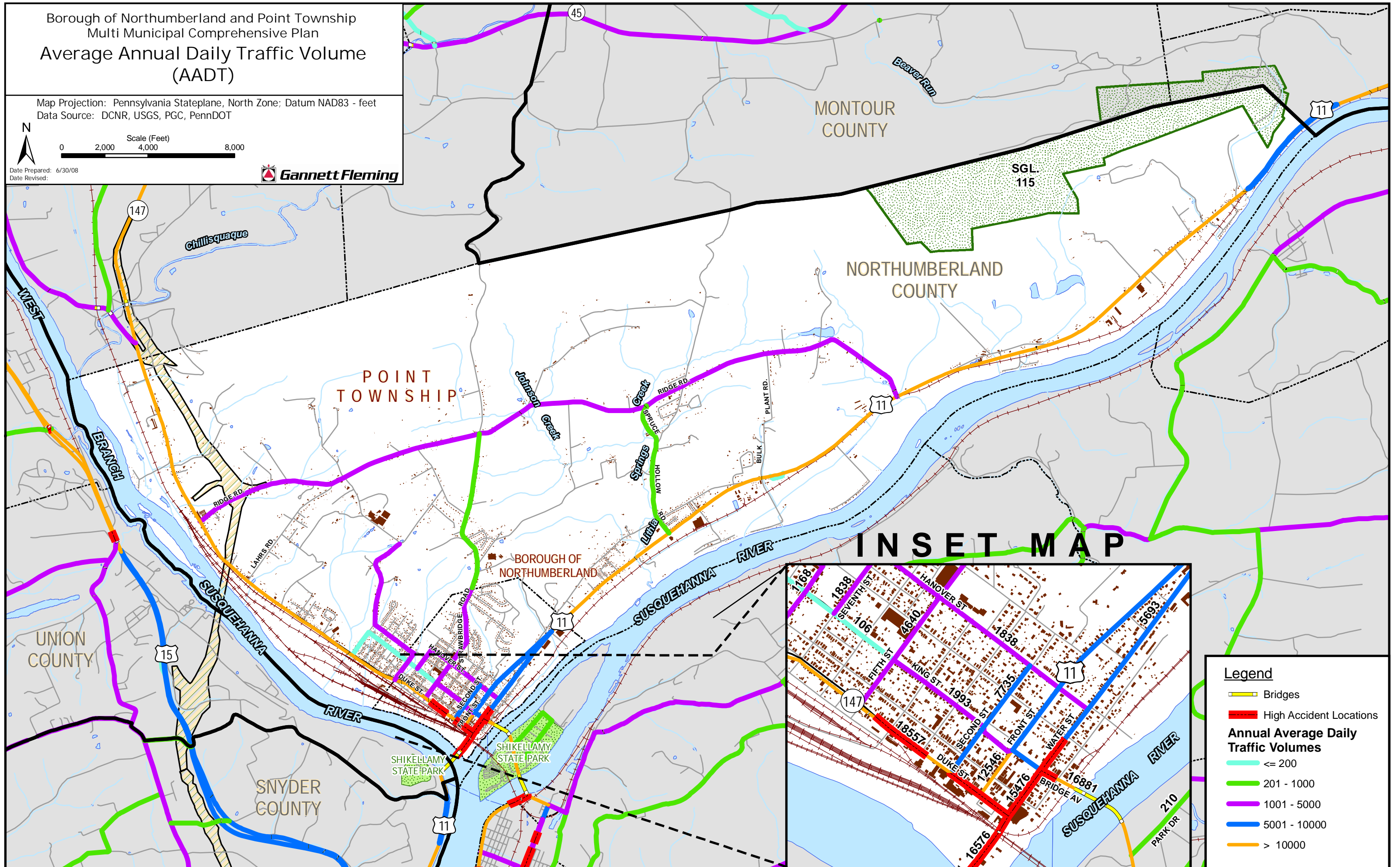
- Legend**
- Sunbury Seaplane
  - Cemetery
  - Church
  - EMS
  - Fire Department
  - Library
  - Municipal Building
  - Park
  - Retirement
  - School
  - Tower
  - Volunteer

Borough of Northumberland and Point Township  
Multi Municipal Comprehensive Plan  
Average Annual Daily Traffic Volume  
(AADT)

Map Projection: Pennsylvania Stateplane, North Zone; Datum NAD83 - feet  
Data Source: DCNR, USGS, PGC, PennDOT



Date Prepared: 6/30/08  
Date Revised:

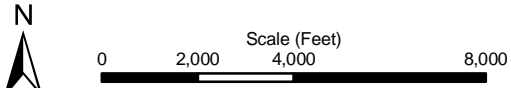


**Legend**

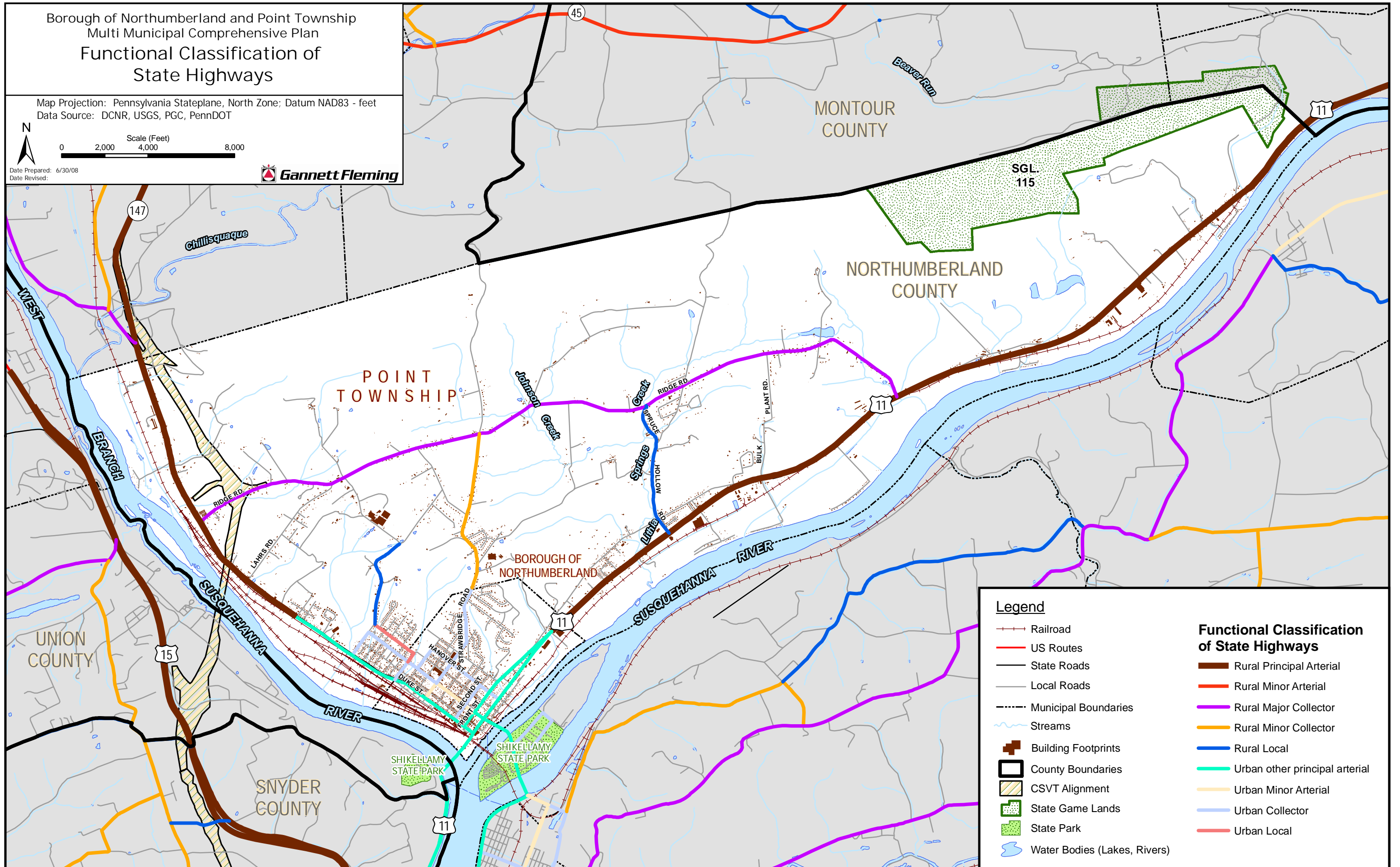
- Bridges
- High Accident Locations
- Annual Average Daily Traffic Volumes**
- <= 200
- 201 - 1000
- 1001 - 5000
- 5001 - 10000
- > 10000

Borough of Northumberland and Point Township  
Multi Municipal Comprehensive Plan  
**Functional Classification of  
State Highways**

Map Projection: Pennsylvania Stateplane, North Zone; Datum NAD83 - feet  
Data Source: DCNR, USGS, PGC, PennDOT



Date Prepared: 6/30/08  
Date Revised:



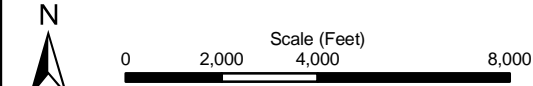
**Legend**

- |                              |                                |
|------------------------------|--------------------------------|
| Railroad                     | Rural Principal Arterial       |
| US Routes                    | Rural Minor Arterial           |
| State Roads                  | Rural Major Collector          |
| Local Roads                  | Rural Minor Collector          |
| Municipal Boundaries         | Rural Local                    |
| Streams                      | Urban other principal arterial |
| Building Footprints          | Urban Minor Arterial           |
| County Boundaries            | Urban Collector                |
| CSVT Alignment               | Urban Local                    |
| State Game Lands             |                                |
| State Park                   |                                |
| Water Bodies (Lakes, Rivers) |                                |

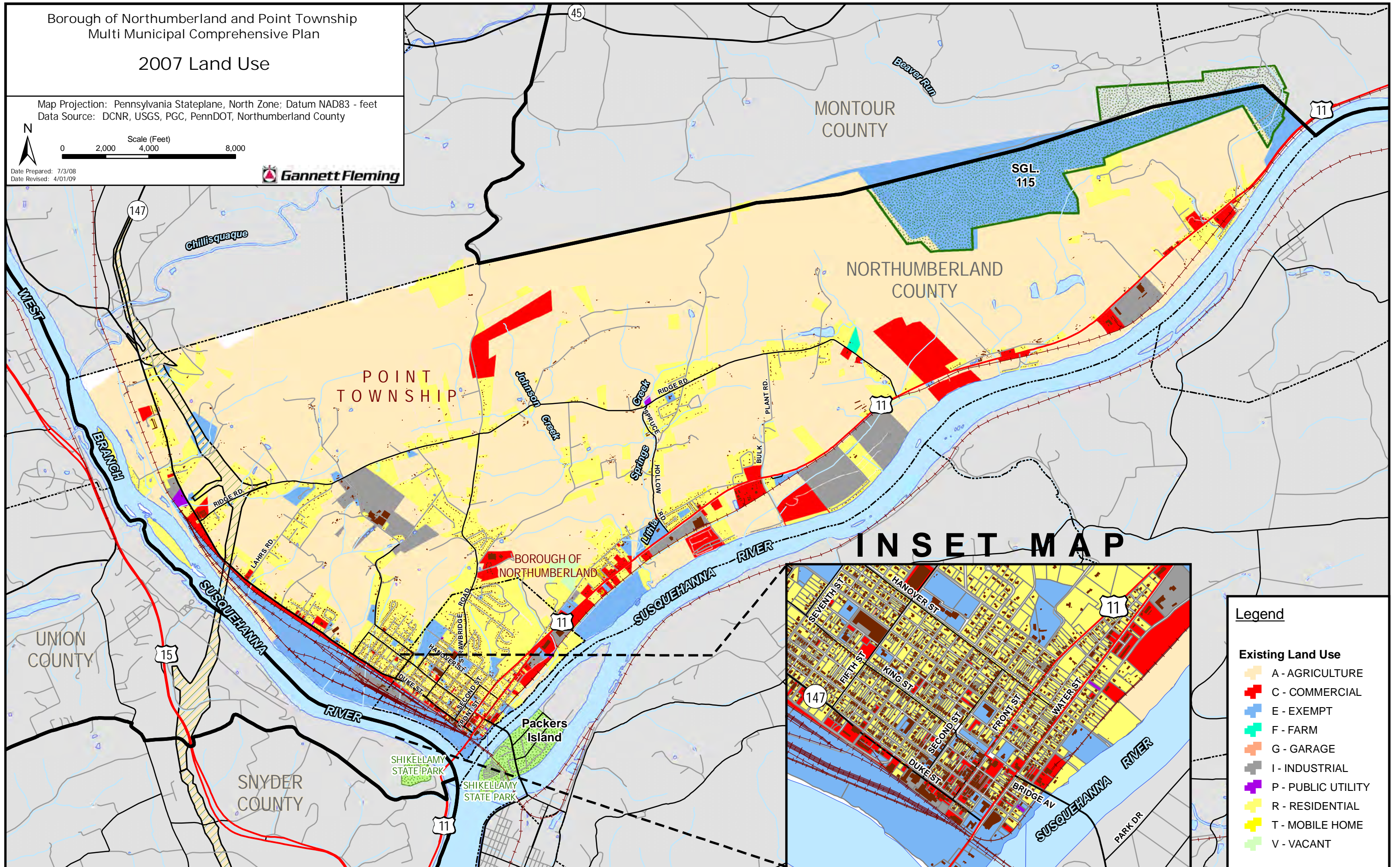
Borough of Northumberland and Point Township  
Multi Municipal Comprehensive Plan

2007 Land Use

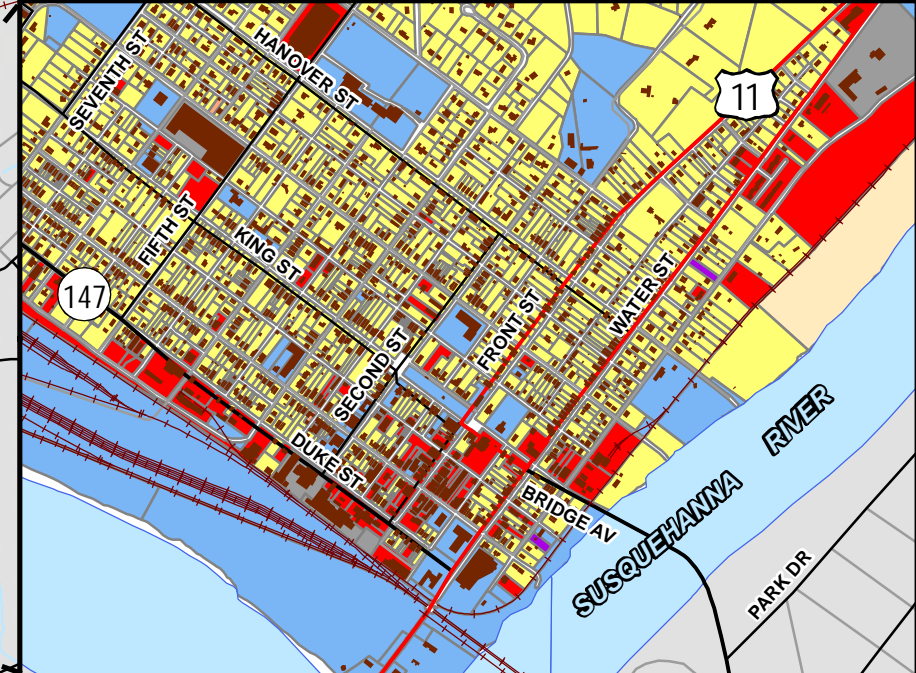
Map Projection: Pennsylvania Stateplane, North Zone; Datum NAD83 - feet  
Data Source: DCNR, USGS, PGC, PennDOT, Northumberland County



Date Prepared: 7/3/08  
Date Revised: 4/01/09



INSET MAP



**Legend**

**Existing Land Use**

	A - AGRICULTURE
	C - COMMERCIAL
	E - EXEMPT
	F - FARM
	G - GARAGE
	I - INDUSTRIAL
	P - PUBLIC UTILITY
	R - RESIDENTIAL
	T - MOBILE HOME
	V - VACANT

Borough of Northumberland and Point Township  
Multi Municipal Comprehensive Plan

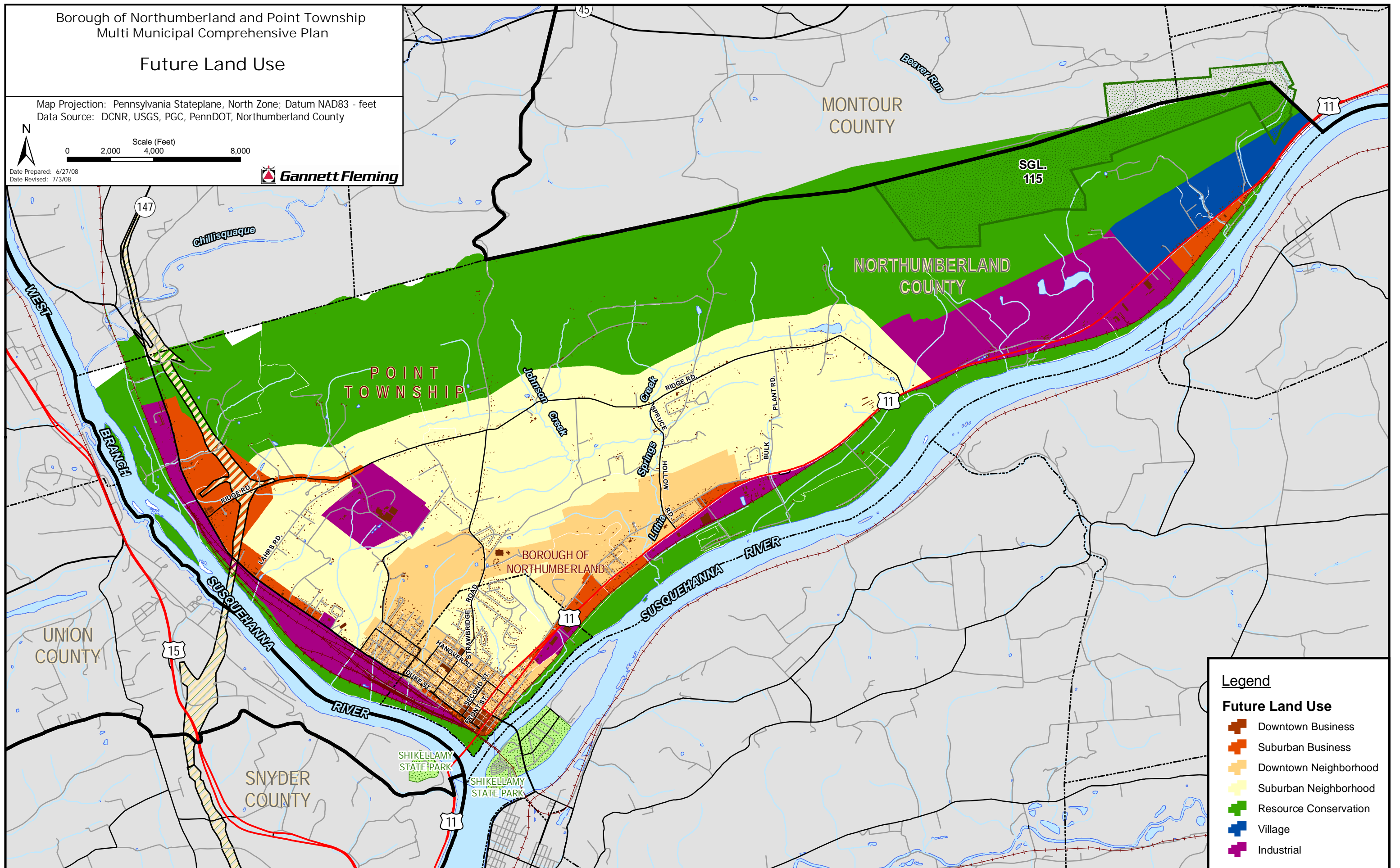
Future Land Use

Map Projection: Pennsylvania Stateplane, North Zone; Datum NAD83 - feet  
Data Source: DCNR, USGS, PGC, PennDOT, Northumberland County



Scale (Feet)  
0 2,000 4,000 8,000

Date Prepared: 6/27/08  
Date Revised: 7/3/08



Legend

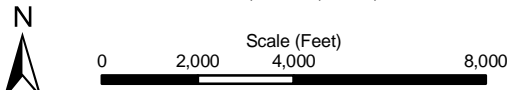
Future Land Use

-  Downtown Business
-  Suburban Business
-  Downtown Neighborhood
-  Suburban Neighborhood
-  Resource Conservation
-  Village
-  Industrial

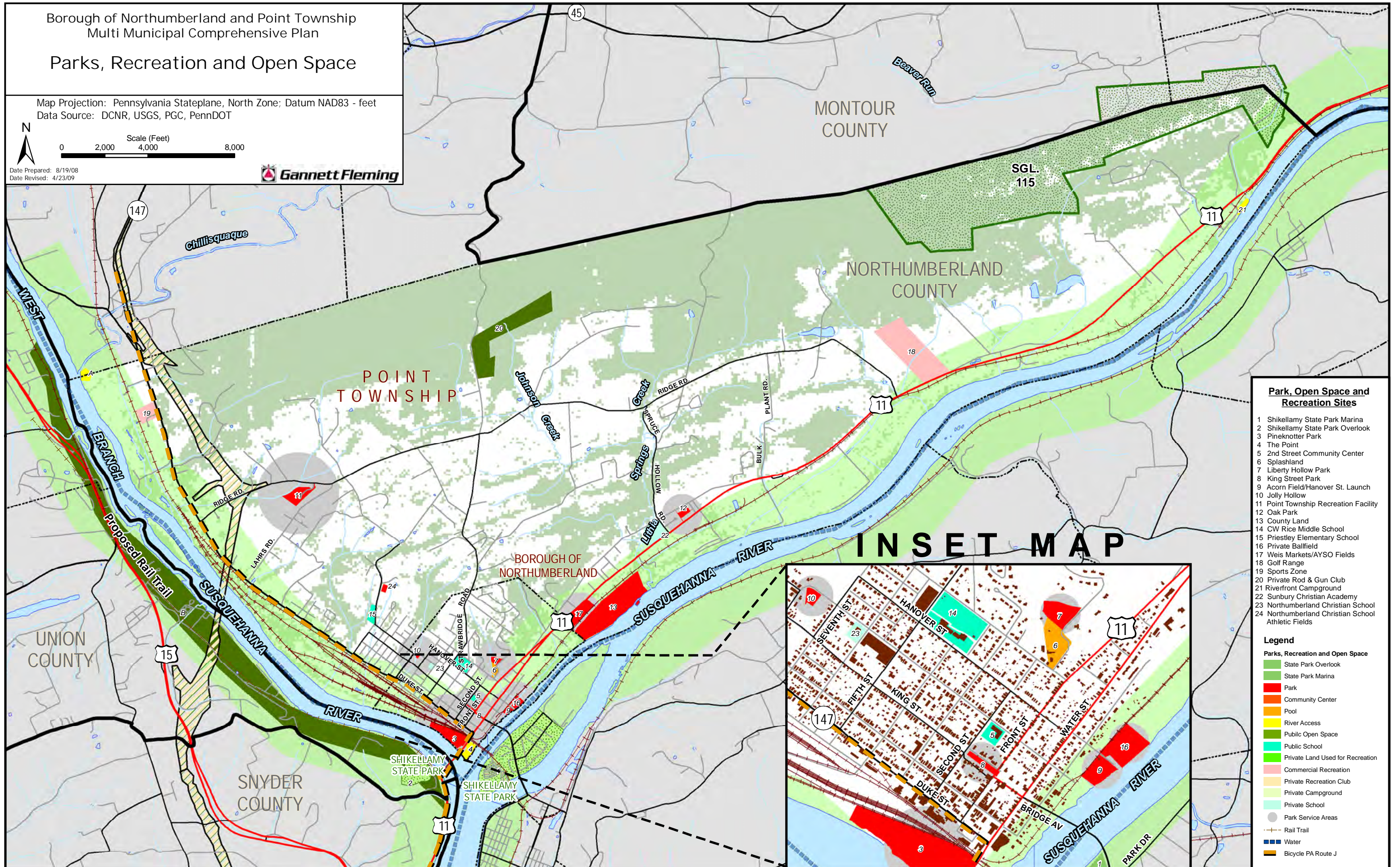
Borough of Northumberland and Point Township  
Multi Municipal Comprehensive Plan

Parks, Recreation and Open Space

Map Projection: Pennsylvania Stateplane, North Zone; Datum NAD83 - feet  
Data Source: DCNR, USGS, PGC, PennDOT



Date Prepared: 8/19/08  
Date Revised: 4/23/09



**Park, Open Space and Recreation Sites**

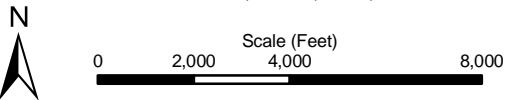
- 1 Shikellamy State Park Marina
- 2 Shikellamy State Park Overlook
- 3 Pineknott Park
- 4 The Point
- 5 2nd Street Community Center
- 6 Splashland
- 7 Liberty Hollow Park
- 8 King Street Park
- 9 Acorn Field/Hanover St. Launch
- 10 Jolly Hollow
- 11 Point Township Recreation Facility
- 12 Oak Park
- 13 County Land
- 14 CW Rice Middle School
- 15 Priestley Elementary School
- 16 Private Ballfield
- 17 Weis Markets/AYSO Fields
- 18 Golf Range
- 19 Sports Zone
- 20 Private Rod & Gun Club
- 21 Riverfront Campground
- 22 Sunbury Christian Academy
- 23 Northumberland Christian School
- 24 Northumberland Christian School Athletic Fields

**Legend**

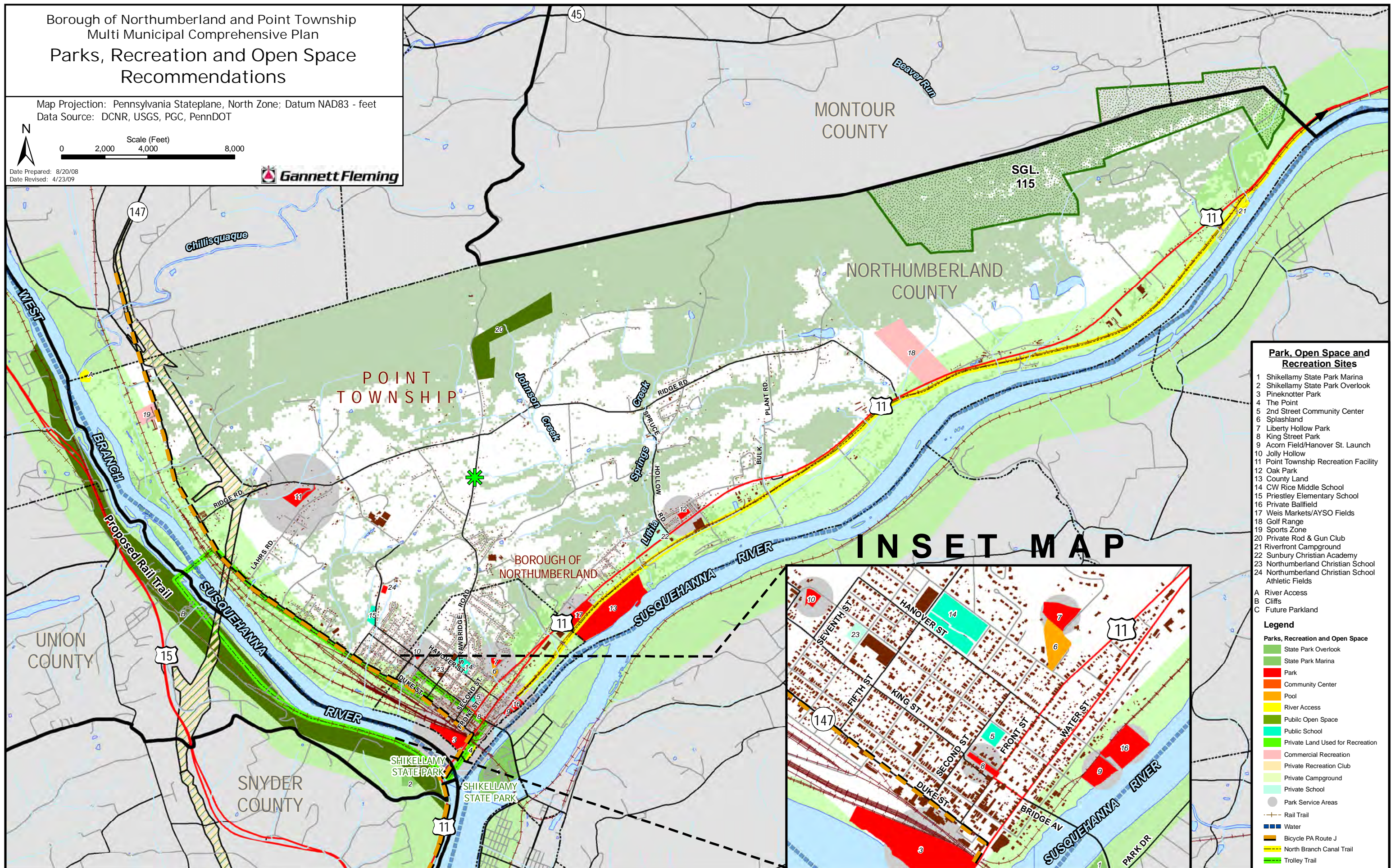
- Parks, Recreation and Open Space**
- State Park Overlook
  - State Park Marina
  - Park
  - Community Center
  - Pool
  - River Access
  - Public Open Space
  - Public School
  - Private Land Used for Recreation
  - Commercial Recreation
  - Private Recreation Club
  - Private Campground
  - Private School
  - Park Service Areas
  - Rail Trail
  - Water
  - Bicycle PA Route J

Borough of Northumberland and Point Township  
Multi Municipal Comprehensive Plan  
Parks, Recreation and Open Space  
Recommendations

Map Projection: Pennsylvania Stateplane, North Zone; Datum NAD83 - feet  
Data Source: DCNR, USGS, PGC, PennDOT



Date Prepared: 8/20/08  
Date Revised: 4/23/09



**INSET MAP**



**Park, Open Space and Recreation Sites**

- 1 Shikellamy State Park Marina
- 2 Shikellamy State Park Overlook
- 3 Pineknott Park
- 4 The Point
- 5 2nd Street Community Center
- 6 Splashland
- 7 Liberty Hollow Park
- 8 King Street Park
- 9 Acorn Field/Hanover St. Launch
- 10 Jolly Hollow
- 11 Point Township Recreation Facility
- 12 Oak Park
- 13 County Land
- 14 CW Rice Middle School
- 15 Priestley Elementary School
- 16 Private Ballfield
- 17 Weis Markets/AYSO Fields
- 18 Golf Range
- 19 Sports Zone
- 20 Private Rod & Gun Club
- 21 Riverfront Campground
- 22 Sunbury Christian Academy
- 23 Northumberland Christian School
- 24 Northumberland Christian School Athletic Fields

- A River Access  
B Cliffs  
C Future Parkland
- Legend**
- Parks, Recreation and Open Space
    - State Park Overlook
    - State Park Marina
    - Park
    - Community Center
    - Pool
    - River Access
    - Public Open Space
    - Public School
    - Private Land Used for Recreation
    - Commercial Recreation
    - Private Recreation Club
    - Private Campground
    - Private School
    - Park Service Areas
  - Rail Trail
  - Water
  - Bicycle PA Route J
  - North Branch Canal Trail
  - Trolley Trail