



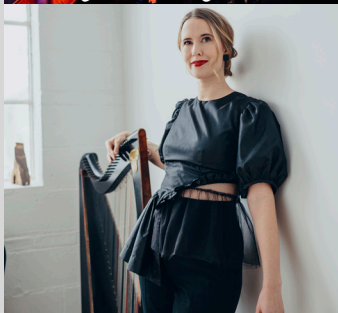
Advertising in our 2024-2025 Season Program guarantees your ad will be seen on 5 different occasions by an audience of over 500 people. That's a circulation of almost 2500 views!



**CHICAGO  
TAP  
THEATRE**  
Oct. 22



**PORTLAND  
CELLO  
PROJECT**  
Dec. 13



**MAEVE  
GILCHRIST -  
HARPIST**  
Feb. 15



**DRAGONS &  
MYTHICAL  
BEASTS**  
March 22



**BINDLESTIFF  
FAMILY  
CIRKUS**  
April 25

# Advertising Rates

*(Full Season)*

Full Page	\$750
1/2 page <i>(vertical or horizontal)</i>	\$375
1/4 page	\$200

Your full color ad will appear in the wrap covering the program of all season ticket events. Your business will also be listed in the program as a donor.

## *(Digest Ad Sizes)*

Full Page 5" x 8"	1/2 Horizontal 5" x 3.938"	1/2 Vertical 2.438" x 8"	1/8 Page 2.438" x 1.875" 1/4 Page 2.438" x 3.938"
----------------------	-------------------------------	-----------------------------	--

## *Specifications:*

*Ads should be submitted in PDF form no later than two weeks prior to the opening of the next production.*

*Design service available, upon request.*



**PINEDALE FINE ARTS COUNCIL**  
[www.pinedalefinearts.com](http://www.pinedalefinearts.com)

**TIM RULAND**

PFAC Executive Director  
[tim@pinedalefinearts.com](mailto:tim@pinedalefinearts.com)

**ARLAINA GODDARD**

PFAC Assistant Director  
[arlaina@pinedalefinearts.com](mailto:arlaina@pinedalefinearts.com)