

Pinedale Auditorium

147 E. Hennick St.
Pinedale, WY 82941

Manager:
PATRICK ROOKUS
cell(307) 231-1692



Front of Building (Hennick St.)



View of Stage from sound booth



View of House from stage



Stage Right Wing



Stage Left Wing, Load-In Door

Dimensions:

Proscenium Width – 36 feet
Proscenium Height – 20 feet

Wing Space SR & SL – approx. 20 feet
(SL wing space impeded by piano box)

Stage Depth from Proscenium – 32 feet
Apron Depth from Proscenium – 8.5 feet

Overall Stage Width – 78 feet
Overall Stage Depth – 40.5 feet

519 seats with no obstructed views

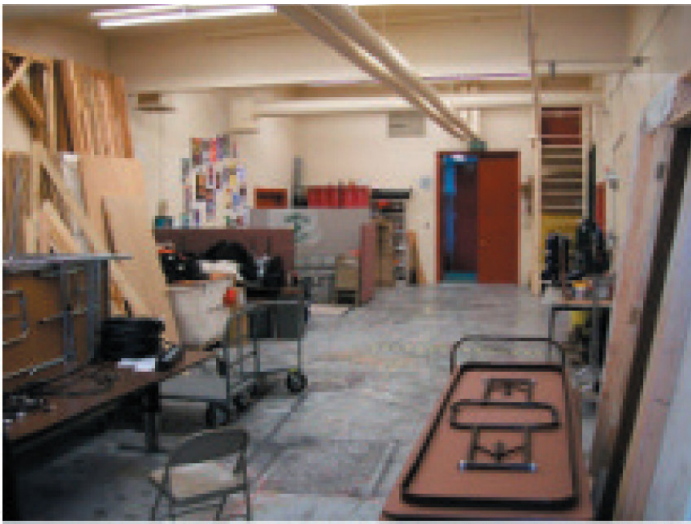
40 foot ceiling (no grid or hang-points)
Approx. 38.5 foot high trim all battens

Load-In Door – 8' wide by 14' high
Load-In Ramp – 10' wide, 76' slope, 3' high
(10' wide alley parallel to ramp)
There is also a loading dock behind scene shop

110v AC – Three 20 amp circuits on stage
Sorry, no three-phase or shore power yet

Green Room area and dressing rooms (2) are
located across the hall from stage-right door

For information about booking this facility contact School District Executive Secretary (307) 367-2139



Scene shop / Green room area (located off SR)



Load-in Door & Ramp area (east side of building)

LIGHTING INVENTORY

- ETC Element 60 light board
- (4) Strand 6x16 Leko
- (40) Strand 6x12 Leko
- (20) Strand 36 degree 4" Leko
- (4) Strand 26 degree 4" Leko
- (24) 6" Fresnels
- (12) Source 4 Pars
- (2) 8" Fresnels
- (8) 4-color strip (cyc) lights
- (2) Scoop/work lights
- (2) Phoebus Ultra-Quartz Spots
- (6) 8' on-stage booms
- (4) 10' booms

MISC

- 44X20 Black Scrim, 44X20 black scrim
- 38X20 Solid Black backdrop
- Wireless ClearCom HME DX210 system with 8 sets of headsets
- CANON REALIS WX6000 Projector with a CANON Ultra Long Focus
- 20X20 projection screen
- Yamaha C6 Grand Piano, Baldwin 6' Grand
- (6) Wenger acoustic shells
- (4) Wenger 3-step choral risers
- Misc. band risers, folding steps, etc
- Misc. freight carts, set-carts, tables, etc.
- Genie-lift
- Black Marley Floor
- Steamer, iron, wardrobe racks, etc.

SOUND INVENTORY: BOARD & SPEAKERS

- Soundcraft Si Performer 3 Digital Board
32 Mono Mic Inputs, 8 Line Inputs, 80 Channels
- Soundcraft Mini Stagebox 32x8 digital snake to the stage
32 analogue inputs / 8 analogue outputs
- 13 wall pockets for inputs around the walls of the stage
- Ability to run HDMI over ethernet from the stage to the light booth and vice versa
- Four (4) ElectroVoice EVA-2082S/906-WHT - Dual Element 8" 2-Way Line Array Speaker 6°x 90°

- Two (2) ElectroVoice EVA-2082-1220-WHT Dual Element 8" 2-Way Line Array Speaker 20°x 120°
- Four (4) ElectroVoice EVA-1151D-WHT Single 15" Subwoofer
- Four (4) ElectroVoice XI-1082-WHT 8" 2-Way Front Fill Speaker
- One (1) ElectroVoice TG-5 2x850W @ 8 Ohms Amplifier for Mains
- One (1) ElectroVoice TG-7 2x2000W @ 4 Ohms Amplifier for Mains
- One (1) ElectroVoice Q44-II 120V 2x250W @ 4 Ohms Amplifier for Front Fill Speakers
- One (1) Symetrix Jupiter 8 - 8 in 8 out Processor
- (6) JBL 512 powered monitors
- We can provide up to 6 individual mixes

MICS

- Eight (8) Shure SM-58 microphones
- Eight (8) Sennheiser EW114G3 Wireless Microphone System with Cardioid Lavalier Microphone,
- Two (2) Sennheiser EW 112/135 G3-A wireless handheld

#	Lineset Schedule	Approx. Distance Upstage	Approx. Weight
1	Grand Valance (green)	0.8'	94
2	House Traveler Curtain (green)	1.6'	280
3	Elec. #1 (40 circuits)	3.0'	Varies w/ lights
4		3.6'	
5	Border (black)	4.9'	70
6	Legs (black)	5.75'	94
7		6.5'	
8		7.8'	
9	Legs & Border (together)	9.3'	164
10	Projector Screen	10.3'	70
11	Elec. #2 (30 circuits)	11.75'	varies w/ lights
12	Mid-stage Traveler Curtain (black)	13.6'	340
13	Border (black)	15.3'	70
14	Legs (black)	15.9'	94
15		18'	
16		18.6'	
17	Border (black)	19.9'	70
18	Legs (black)	20.6'	94
19	Elec. #3 (20 circuits)	21.8'	varies w/ lights
20		22.0'	
21	Up-stage Traveler Curtain (black)	24.5'	440
22	Cyclorama (white vinyl)	25'	120

Pinedale High School Auditorium

(519 seats)

7' from apron to 1st row

Wall

4' ledge

4'

Wall

4' ledge

7'

Hallway 10' wide

DMX-512
5 pin female jack

8.5'
Piano
Box

11'

Exit Door

Ramp
10' wide

Load-In Door 8x14'

Stairs 5' wide
3' high

Proscenium Width - 36 feet
 Proscenium Height - 20 feet
 Wing Space - 20 feet Left
 Wing Space - 20 feet Right
 Stage Depth from Proscenium - 32 feet
 Apron Depth from Proscenium - 8.5 feet
 Overall Stage Width - 78 feet
 Overall Stage Depth - 40.5 feet
 High Trim - 39 feet

Counterweights

Linesets:

- 22 Total
- 4 sets Legs & Borders
- House, Mid-Stage, and Up-Stage Traveller Curtains
- 1 Cyc (Up-Stage)

Electrics:

- 3 pipes onstage, 1 FOH, 2 box-booms, 6 floor-pockets
- 172 Dimmers (2.4k ea.)
- Strand 300 Series Controller

Door to Scene Shop
and Dressing Rooms

Hallway 10' wide

Exit Door

Additional loading-dock
behind scene shop

Alley - 10+' width between buildings
(some obstacles prevent using full length of alley)