

THE BEE HERDER

Published by Medina County Beekeepers Association – March 2022
www.MedinaBeekeepers.com



MEDINA
beekeepers

Association Officers

President: Paul Kosmos

president@medinabeekeepers.com
330-239-1379

Vice President: Peggy Garnes

vp@medinabeekeepers.com
330-723-6265

Secretary: Chris Fullerton

secretary@medinabeekeepers.com
330-242-2849

Treasurer: Kate Reusch

treasurer@medinabeekeepers.com
330-416-0284

Newsletter Editor: Deanna Rasch

deanna.rasch@protonmail.com

Webmaster: Mike Rossander

webmaster@medinabeekeepers.com

Refreshments Coordinators:

Elle Jisa ejisa@roadrunner.com
Sheila Mauer spmaurer01@gmail.com

Directors:

2022: Larry Watson mcbalarry@aol.com
2023: Tim Moore elkcreekhoney@gmail.com
2024: John Vrtachnik jvrtachnik@windstream.net

Medina County Bee Inspector:

Ron Zickefoose
ronz@asap-homes.com
330-466-3642

State of Ohio Inspector:

Barbara Bloetscher
bbloetscher@agri.ohio.gov
614-644-5839

Join the MCBA to hear a great lineup of virtual and live speakers. Start or renew your membership [online](#), or send in the membership form at the end of the newsletter.

MCBA Meeting Location

WILLIAMS ON THE LAKE

787 Lafayette Road Medina OH 44256

Question and answer period begins at 6:30PM

Presentation begins at 7PM

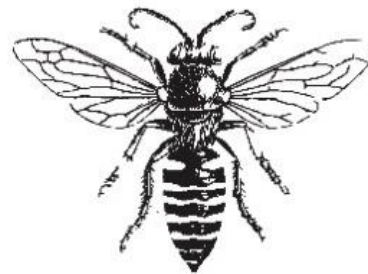
March 21, 2022 – Barb Bloetscher (Live and via Zoom)

Barb Bloetscher - The Ohio State Bee Inspector

Barb will share recent findings regarding diseases in the bee yard. There have been recent outbreaks of American Foulbrood in Ohio.

April 18, 2022 – Steve Repasky – Topic TBA

May 16, 2022 – Marci Lininger – Topic TBA



Ten Minutes with the Bees

by *Paul Kosmos, MCBA President*

The Bee Yard in March

Last month I talked about equalizing your hives to prevent swarming. But what if you only have one hive? If it is very strong, you may want to consider a split. You use a nuc box to start a new hive. Basically, you move a couple frames of brood (one soon to emerge) with the bees (find the Queen first!) into the nuc and shake another frame or two of bees into the nuc. You only want to move enough frames to reduce the strength of the strong hive.

You have one more decision to make. Do you want to buy a queen? Or do you want to let the nuc raise a new queen (make sure one frame has eggs and new larva). Another option is to wait until you find Queen cells in your hive. Then move the old Q into the nuc and let the strong hive raise the new queen. Add a couple frames of foundation (or a frame of food) to fill the nuc and feed them SS and pollen patty until established.



Nice Size Queen Cell

When to Add Supers - Another step to prevent swarms is to put your supers on early. This works best if you have at least one frame of drawn comb. Wisdom says to put your supers on when the Dandelions bloom. That is OK, but often not the best time. What is blooming in **YOUR** area? You can get a pretty nice flow from Maple trees, for example. Experience will teach you the best time. I now put my supers on early in hopes of getting them in the habit.

Remember the picture from February? The one with the burr comb? Building new wax usually means it's time for a super. Here's another one from last year.



April – Building a Lot of New White Burr Comb

When you add a super, if at all possible, place a frame of drawn comb in the middle to encourage the bees to move up. If you have a full box of drawn comb, put only nine frames so they will draw them fuller (fatter). It makes extracting the honey so much easier.



Beautiful Honey Frame - White Wax, Drawn Thick

One more thought... In the spring, **NEVER** feed your bees SS or pollen patty (or substitute) unless you have a specific reason (and experience). Stimulating your bees in spring will guarantee early swarms.

MCBA CLUB NEWS

Volunteers Still Needed!

The Club is looking for helpers. To learn more about any of these positions, contact Paul Kosmos at pkosmos@frontier.com.

Newsletter Help – Can you assist by writing or submitting stories for the newsletter? Submit the details, normally in Word. Class dates and speakers, articles, bee news, and other items of interest are submitted and the editor puts them together.

Library Hive Maintenance - Join the maintenance team for the library hive, located in the main branch of the Medina County District Library. Occasionally, the hive has to be maintained. Adding food, cleaning the hive, and possibly swarm control.

MCBA Bee Yard Hives – We need one or two volunteers to help manage the Bee Yard. This is similar to managing the hives in your back yard. Regular checks are necessary to maintain the hives in good order so that they can be used for in-person field days. We are seeking several helpers to make sure that any time demands are shared.

Thanks to member **Kym Lucas** for submitting this interesting article in *Etymology Today* on the migration of giant honeybees.

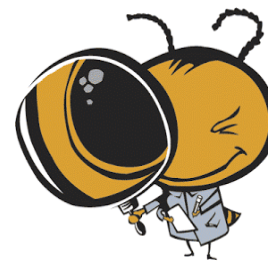
[Where Giant Honeybees Rest Their Wings During Annual Migration](#)

by Ed Ricciuti

The Inspector's Note – March 2022

by **Ron Zickefoose**, Medina County Bee Inspector

The calendar can be a blunt tool when applied to beekeeping. The condition of the colony has more to do with the weather, sources of food, and nighttime temperatures than what day and month it is. However, the calendar is a tool and is especially useful for beginners in knowing what to do when. Following is a one-page beekeeper calendar for our region given to me by a previous Medina County Bee Inspector, Ron Morrow. It shows colony build-up in adult bee population and brood, major sources of pollen and nectar, and a recommendation of how and when to super your colonies. As with any tool, you still must examine the colony and size the cavity to the actual population of the colony, but it is useful nonetheless.



Some of the other tools I use in planning the beekeeping year are accuweather.com, which provides a meteorological guess on what the weather and temps will be in your backyard months in advance. Another great tool is the [Ohio State Phenology Calendar](#), which provides development estimates for plants and insects during the growing season.

What did we ever do without the Internet?

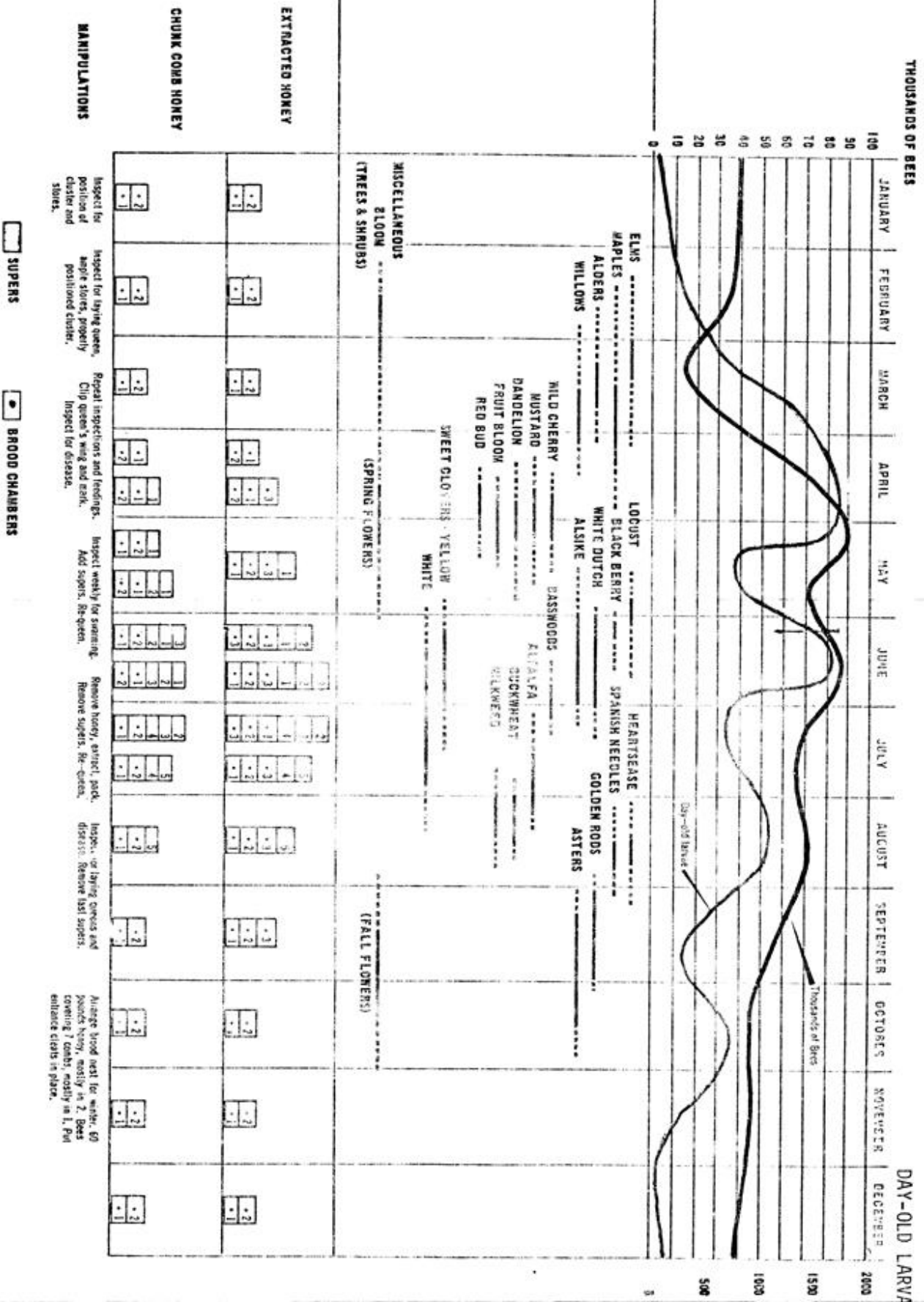
Something missing from these is a schedule of mite treatment, which for me begins in late February. Randy Oliver at [Scientific Beekeeping](#) has produced a model that can be used to calculate optimal treatment methods and dates, you can read more about it and download the spreadsheet here: [Randy's Varroa Model](#)

Start with your goals and work backward on the calendar.

ADULT BEES AND BROOD

SOURCES OF POLLEN AND NECTAR

HIVE EQUIPMENT POSITION AND ADJUSTMENTS



2022 MCBA Beginner Class

The Tuesday class is finishing up this week. We ended up with 36 participants, a great way to start the year. As usual, their thirst for knowledge and anticipation to get started is very evident. The Saturday class starts this Saturday, March 19th. We have 27 registered for this class which gives us a total of over 60 new beekeepers in the area. It is always so much fun and so exciting to see all the eager faces!



Mary teaching about forage for the bees

Apiary Certification Update

The Ohio Department of Agriculture has issued new Apiary Certificates because the ones initially mailed for 2022 incorrectly listed the year as 2021. You can dispose of the incorrect certificate and keep the certificate dated 2022.



Library Observation Hive to Return in April!

We plan to return the library hive to its summer home next month. The observation is a huge success, both with children and adults. Hundreds of visitors get to learn a little about the bees, and finding the Queen Bee is always the main attraction!



New Newsletter Editor

by *Paul Kosmos, MCBA President*

Deanna Rasch has volunteered as our new newsletter editor. Deanna has experience with the software packages the Club uses, as well as experience in technical writing and previous newsletter editing. We are excited to have her aboard and look forward to having her fill a much-needed spot in the Club. I'm sure you will join me in welcoming her at our next meeting.



2022 MCBA MEMBERSHIP APPLICATION/RENEWAL

MCBA offers webinars and lectures, a monthly newsletter, the opportunity to sell honey at the county fair, and email updates. \$20 for emailed or \$25 for a printed, mailed newsletter. Membership includes one family member in activities other than voting.

Renew your membership [online here](#) or complete the form below, make a check payable to **Medina County Beekeepers Association**, and mail to Medina Beekeepers, PO Box 1353, Medina, Ohio 44258.

Membership Form - Please complete so that we have current roster information for the newsletters!

Member Name _____

Email address (please print) _____

Mailing Address _____

Phone # _____ (Optional) # of colonies _____