



# THE SHALOM NEWSLINE

So, then, neither  
the one who  
plants nor the  
one who waters  
is anything, but  
only God who  
gives the  
growth.

1 Corinthians 3:7



## Church Staff

Rev. Mark Miller.....Senior Pastor  
Jean Dart.....Minister of Music & Worship  
Kathy Seay.....Children's Ministry Director  
Jeff Farrier.....Church Musician  
Kelly Bittler.....Ministry Assistant

## Contact Us

8116 Walnut Grove Road Mechanicsville, VA 23111

Phone: 804.746.7737

Website: [www.shalombaptist.net](http://www.shalombaptist.net) ♦ Email: [shalombaptistma@gmail.com](mailto:shalombaptistma@gmail.com)

### Church Office Hours

Monday: 7:30am-5pm, Tuesday: 8am-2pm,

Wednesday: 7:30am-3pm Thursday: 8am-2pm

# Mark's Minute



Not long ago I was on the health and beauty aisle at the grocery store picking up some hand cream for the family. That's when I noticed an usual product on the shelf. It was called "Natural Glow". It was described as "sunless tanning moisturizer". Sunless tanning?? That actually sounds like the OPPOSITE of a "natural glow", doesn't it? And the more I reflected on that phrase "natural glow", the more and more I began to think about it through a spiritual lens.

From a spiritual perspective, our human nature (and the things of this world) actually result in us being "tarnished". Sin (and the Curse) that entered into the Garden of Eden, (and which are still with us today) show us that what's "natural" in this world actually dulls our spiritual walk. In other words, the more that we walk in our "natural nature" the less spiritual glowing we will emanate.

On the flipside, when we choose to step away from our "natural nature" and intentionally come into the presence of the supernatural (through God's Word, through prayer, through other believers)...it is THEN that we start to really glow and shine.

Back in the Old Testament book of Exodus, you might recall reading about Moses: Moses had an encounter with God and it had a noticeable effect on his countenance. As Moses came down the mountain (after being in the presence of God), his face shone brightly, reflecting the glory of God. And subsequently, every time Moses would stand in the presence of God, he would radiate with God's glory.

Well, let me assure you...there was NOTHING natural about that glow! In other words, things of this world don't make us radiate...we radiate when we get into the presence of the Lord. It is His light that then reflects from Him...onto us and then onto others!

This mystery becomes clearer when we recall that Jesus proclaimed, about Himself, "I am the light of the world. Whoever follows me will never walk in darkness but will have the light of life." Now, combine THAT with what Jesus said in Matthew 5:14: "You are the light of the world." What is the connection? Following Jesus. In other words, being in close proximity to Jesus (just as Moses was in close proximity with God back in Exodus)—is what brings the "glow" that people will notice.

THAT is what we call a spiritual and supernatural glow.

Sorry, Jergens...you just can't top THAT kind of glow!

Glow on, Shalom! Glow on!

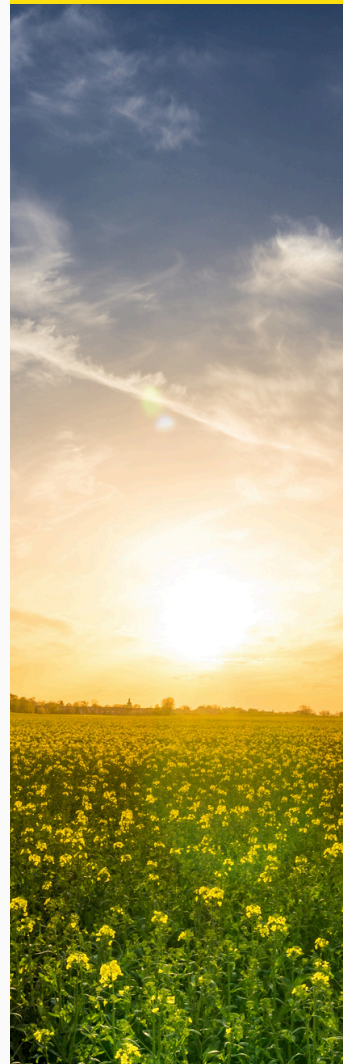
In Him,  
*Pastor Mark*

“

WE  
RADIATE  
WHEN WE  
GET INTO  
THE  
PRESENCE  
OF THE  
LORD.

-PASTOR  
MARK

”





Meet our Deacon for the  
month of June:



*Samantha Mayhew*

#### FROM THE CHURCH OFFICE:

- Church Council Meeting: Tuesday, June 3rd at 7:00 pm in the Co-Ed SS classroom.
- July Newsletter entries are due, Wednesday, June 25th.
- If you are interested in reserving the Fellowship Hall, pavilion or other parts of the church for an event, please contact the church office. Our calendar fills up quickly!
- Every 5<sup>th</sup> Sunday, our church collects benevolence funds to help those in our church & community. This month the 5<sup>th</sup> Sunday is June 29th.



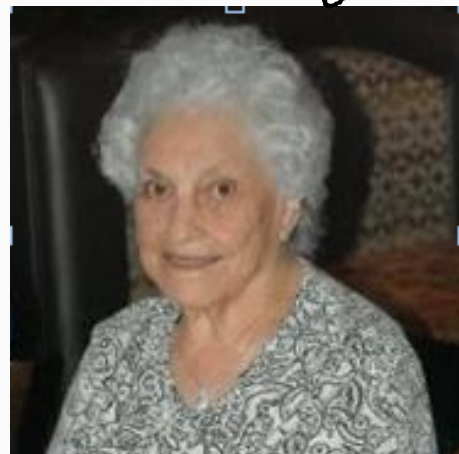
Shut-in of the Month:

*Betty Hauser*



7402 Strawhorn Drive  
Mechanicsville, VA 23111

*Alma Wright*



6352 Lakeway Drive  
Mechanicsville, VA 23111

Please remember Betty and Alma this month by sending a card or calling. It means so much to our Shut-Ins, that they are remembered and that we still care.



Our next meeting is  
Thursday, June 26<sup>th</sup>  
at 1:00 pm in the  
Fellowship Hall



## Strength in the Journey

Strength in the Journey is a ministry for those who have lost their spouse and are seeking the support of others who are navigating this path in their life's journey.

You are welcome to join our next meeting on  
**Monday, June 16<sup>th</sup> at 1:00 pm at Outback Steakhouse.**

## Just Breathe



## Just Breathe Caregiver Support Group

Our next meeting is Monday,  
June 23rd at 7:00 pm



**wmuV**<sup>(SM)</sup>  
women • missions • leadership

The Baby Bottle Campaign  
runs through June 15th.

Please pick up a baby  
bottle and fill it with money  
or a check. All donations  
go to the East End  
Pregnancy Center.





## A Message From Stewardship

Good morning, Shalom! Your Stewardship Committee is looking for your input on the possibility of incorporating our church. At the last quarterly business meeting we started a congregation wide discussion on incorporation. There are a few key points worth reviewing from that meeting.

First, this is a decision for the congregation to make, not just the Stewardship Committee. Additionally, a decision on whether to proceed has not been made. We will use the process outlined below to make that decision as a church.

As a committee we felt compelled to consider incorporation given the litigious society that we live in today. There was a time when you would never hear of a lawsuit being brought against a church but in today's environment it is common for churches to be sued after accidents, or even for political purposes.

Incorporation would provide an additional ring of protection around our church. We rely first and foremost on God, followed by good practices, and continuing insurance. Incorporation would be an additional ring of protection to help ensure that we take the best possible care of our trustees, staff, and church members.

What has been done so far? Stewardship, Deacons, and Trustees held a joint meeting to discuss incorporation, and all parties agreed that there was value in incorporation and the issue should be brought to the congregation. Stewardship also met with a law firm that helps churches incorporate to see what would be involved in the process. Finally, we reached out to both BGAV and Dover Baptist Association to get their thoughts. Both the BGAV and Dover are themselves incorporated and strongly recommend we do so as well.

We want the whole church to be informed and educated to make this decision. Stewardship is planning to hold a town hall meeting with the congregation to answer any and all questions. Our goal is that no matter what direction the congregation chooses, all the facts will be well known, and the process will be completely transparent. To help us answer any questions you might have we are asking that you please submit all questions to [Shalombaptistma@gmail.com](mailto:Shalombaptistma@gmail.com) before we have our town-hall. If you do not use email, please call the church office and leave your message with Kelly. Of course, we will take additional questions at the town hall but knowing in advance will help us do the necessary research if we do not already know the answer.

Thank you for your honest feedback whether for or against and we look forward to seeing you all at the town hall in the TBD future.

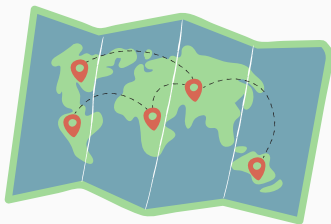
Your Stewardship Committee



## KIDS CORNER



### UPCOMING EVENTS



#### **Voyagers**

Every Tuesday starting June 10th  
8:45 am-2:15 pm



#### **Touch-A-Truck & Resource Fair**

Saturday June 21<sup>st</sup>  
10:00 am



*In case of inclement weather-a rain date  
has been scheduled for June 28th.*



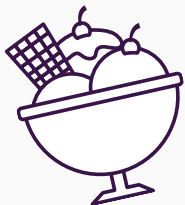
#### **SAVE THE DATE for VACATION BIBLE SCHOOL**

August 5th-9th  
6:00 pm-8:30 pm


**Register NOW by visiting Shalom's  
website at [www.shalombaptist.net](http://www.shalombaptist.net).**




### **"Scoop & Sing with a Smile This Summer!"**



You're invited to a sweet afternoon of Ice Cream, Singing & Fellowship  
as we gather with some of our cherished shut-ins.

 Monday, June 23

 1:00-2:00 PM

 Fellowship Hall



Enjoy a scoop, raise your voice in song, and share a few stories and smiles.  
These special seniors will be blessed by your presence—and you'll be just as blessed in return.

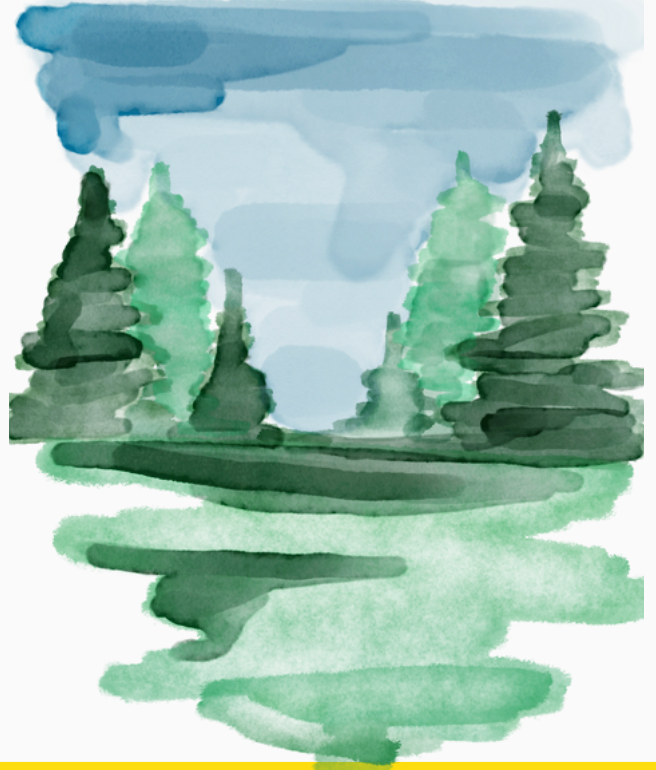
***Interested in bringing joy year-round?  
Consider joining our Shut-In Ministry and help brighten someone's day.  
For more details, see Kathy Wingfield.***



# HAPPY FATHER'S Day

*"A righteous person acts with integrity; his children who come after him will be happy."*

PROVERBS 20:7



**SHALOM  
PICKLEBALL**

Shalom Gym  
Every Thursday  
5:30 pm-7:30 pm

 **FUGE CAMPS**

**June 16<sup>th</sup> -20<sup>th</sup>**

**June 23<sup>rd</sup> -27<sup>th</sup>**

**centrikid**  
camps

The names of children, youth and chaperones are available on the card insert in Sunday's bulletin. Please write these campers & chaperones a note of encouragement so that they can read them while they are camp. Please have notes delivered to the church office by **Sunday, June 15<sup>th</sup>**.

**Both groups are also collecting snacks for their week away. Those items can be placed in the white cart at the welcome desk in the church lobby.**



# Congrats!

## CLASS OF 2025

"Trust in the Lord with all of your heart..."  
**Proverbs 3:5**

### June Anniversaries

1st Scott & Annette Shaw  
3rd Neil & Brandy Applewhite  
7th David & Brenda Beish  
9th Courtland & Peggy Lambert  
10th John & Betty Edgell  
Ronnie & Lehlia Hardy  
11th Craig & Margene Secor  
20th Bill & Anne Fowler  
22nd Ed & Vicky Kidder  
23rd Vernon & Mary Beasley  
Charles & Kathy Wingfield  
26th Lin & Kathy Diacont  
29th Harold & Virginia Clark

### June Birthday's

2nd Wayne Hufner  
3rd Alma Wright  
4th Betty Cook  
5th Kay Craft  
Logan Lane  
6th Kathy Diacont  
7th Bobby Ryan  
8th Bonnie Blake  
Dottie Layne  
11th Juliana Dean  
Bill Frost  
12th Jean Dart  
David Nelson  
14th Harold Clark  
Linda Tomlin  
17th Angela Farrier  
18th Chuck Hubble  
Dee Ober  
Drew Revere  
Craig Secor

23rd Roy Taylor  
24th Wyatt Byrd  
26th Charlie Blackwell  
Russ Hoffman  
27th Gail Hosfeld  
28th Glen Daniel  
29th Dan McFaden





# June



# 2025

Sunday	Monday	Tuesday	Wednesday	Thursday	Friday	Saturday
<b>1</b> 8:30am Worship 9:20am He'Brews Cafe 9:45am Sunday School 11:00am Worship 12:15pm Centrifuge Parent Meeting 3:00pm Girl Scout Meeting	<b>2</b> 11:00am Staff Meeting	<b>3</b> 8:30am Men's Bible Study 9:00am Walking in the Gym 7:00pm Church Council Meeting	<b>4</b> 6:15pm Bible Study (Heaven) 6:15pm Children's Ministry Program 6:15pm Praise Team 6:15pm Youth 7:30pm Chancel Choir Rehearsal	<b>5</b> 5:30pm Pickleball	<b>6</b>	<b>7</b> Fellowship Hall/Pavilion Reserved (Grubbs)
<b>8</b> 8:30am Worship 9:20am He'Brews Cafe 9:45am Sunday School 11:00am Worship 1:30pm Deacon's Meeting	<b>9</b> 11:00am Staff Meeting	<b>10</b> 8:30am Men's Bible Study 8:45am Voyagers 9:00am Walking in the Gym 7:00pm Stewardship Meeting	<b>11</b> 6:15pm Bible Study (Heaven) 6:15pm Children's Ministry Program 6:15pm Praise Team 6:15pm Youth 7:30pm Chancel Choir Rehearsal	<b>12</b> 5:30pm Pickleball	<b>13</b> Set Up for shower	<b>14</b> 2:00pm Fellowship Hall Reserved (Baby Shower-Newcomb)
<b>15</b> 8:30am Worship 9:20am He'Brews Cafe 9:45am Sunday School 11:00am Worship 3:00pm Girl Scout Meeting	<b>16</b> Centrifuge (JMU) 11:00am Staff Meeting	<b>17</b> Centrifuge (JMU) 8:30am Men's Bible Study 8:45am Voyagers 9:00am Walking in the Gym 9:45am Properties Committee Meeting	<b>18</b> Centrifuge (JMU) 6:15pm Bible Study (Heaven) 6:15pm Children's Ministry Program 6:15pm Praise Team 6:15pm Youth 7:30pm Chancel Choir Rehearsal	<b>19</b> Centrifuge (JMU) 5:30pm Pickleball	<b>20</b> Centrifuge (JMU)	<b>21</b> 8:30am Oil Change Ministry 10:00am Touch-a-Truck & Resource Fair
<b>22</b> 8:30am Worship 9:20am He'Brews Cafe 9:45am Sunday School 11:00am Worship	<b>23</b> CentriKid 9:00am Feedmore Truck 11:00am Staff Meeting 1:00pm Scoop & Sing with a Smile This Summer 7:00pm Just Breathe Caregiver Support Group	<b>24</b> CentriKid 8:30am Men's Bible Study 8:45am Voyagers 9:00am Walking in the Gym	<b>25</b> CentriKid 6:15pm Bible Study (Heaven) 6:15pm Children's Ministry Program 6:15pm Praise Team 6:15pm Youth 7:30pm Chancel Choir Rehearsal	<b>26</b> CentriKid 5:30pm Pickleball	<b>27</b> CentriKid	<b>28</b> 10:00am Rain Date for Touch-a-Truck & Resource Fair
<b>29</b> 8:30am Worship 9:20am He'Brews Cafe 9:45am Sunday School 11:00am Worship 3:00pm Girl Scout Meeting	<b>30</b> 11:00am Staff Meeting	<b>1</b> 8:30am Men's Bible Study 8:45am Voyagers 9:00am Walking in the Gym 7:00pm Church Council Meeting	<b>2</b> 6:15pm Bible Study (Heaven) 6:15pm Children's Ministry Program 6:15pm Praise Team 6:15pm Youth 7:30pm Chancel Choir Rehearsal	<b>3</b> 5:30pm Pickleball	<b>4</b>	<b>5</b>



## *Shalom Baptist Church*

8116 Walnut Grove Road  
Mechanicsville, VA 23111

### **Shalom's Calendar QR Code:**

Open your camera on your smart phone. Move your camera so the QR code is in the frame. You'll see the code's URL appear, tap on it to open that URL.

