

The background features a large, light blue 'WL' logo with a circular arrow around it, suggesting a continuous process or cycle. The text is centered and rendered in a bold, blue, serif font with a slight drop shadow.

***WL MOLDING***

***PATH TO SUCCESS***



# *Success Starts From Within*

We embrace the diversity of our team as we continue to grow beneficial partnerships with our customers, employees and communities.

## **We believe in:**

- **The US Manufacturing Industry**
- **The Midwest Worker**
- **We can be competitive with all states and off shore competition including low cost countries**



# *Success Starts From Within*

We are a manufacturing-centered organization with a mission of sustaining successful relationships with our partners.

- We will provide to our **Customers...**
  - Outstanding quality
  - Value
  - On-time delivery
- We will provide to our **Employees ...**
  - A safe environment
  - Rewarding work
  - Opportunity for growth
- We will provide to our **Communities...**
  - Employment opportunities
  - An environmentally safe plant
  - Involvement



# *Success Starts From Within*

## **W**orld Class Quality

- ✓ meeting all customer expectations

## **L**eadership Commitment

- ✓ at all levels of the organization

## **M**otivated Continuously

- ✓ by embracing continuous improvement

- Founded in 1945 (Pioneer in design and manufacturing of plastic molded parts)
- Precision molded plastics parts and assemblies world wide for over 70+ Years
- Serves six different major industries
- Unique setup of molding and machining of plastics under one roof
- Grown from hand drawn design system to 3D printing capability in-house
- Owns over 200 tools that can produce standard parts for industry
- Used over 12,000 unique tools in production since inception
- Unique solution provider for low volume production through alternative to independent tooling
- Serves four major areas of molded components, namely tight tolerance, functional, decorative, insert molded
- Close proximity to from four major express ways
- Ownership has changed hands once in 2013 since inception
- Alliance with LCC tool shop to provide very competitive tooling
- Serves full range of production from very low volume to very high volume
- In-house tool room to handle all maintenance & tool repair
- ISO 9001:2015 Certified
- Minority Certified



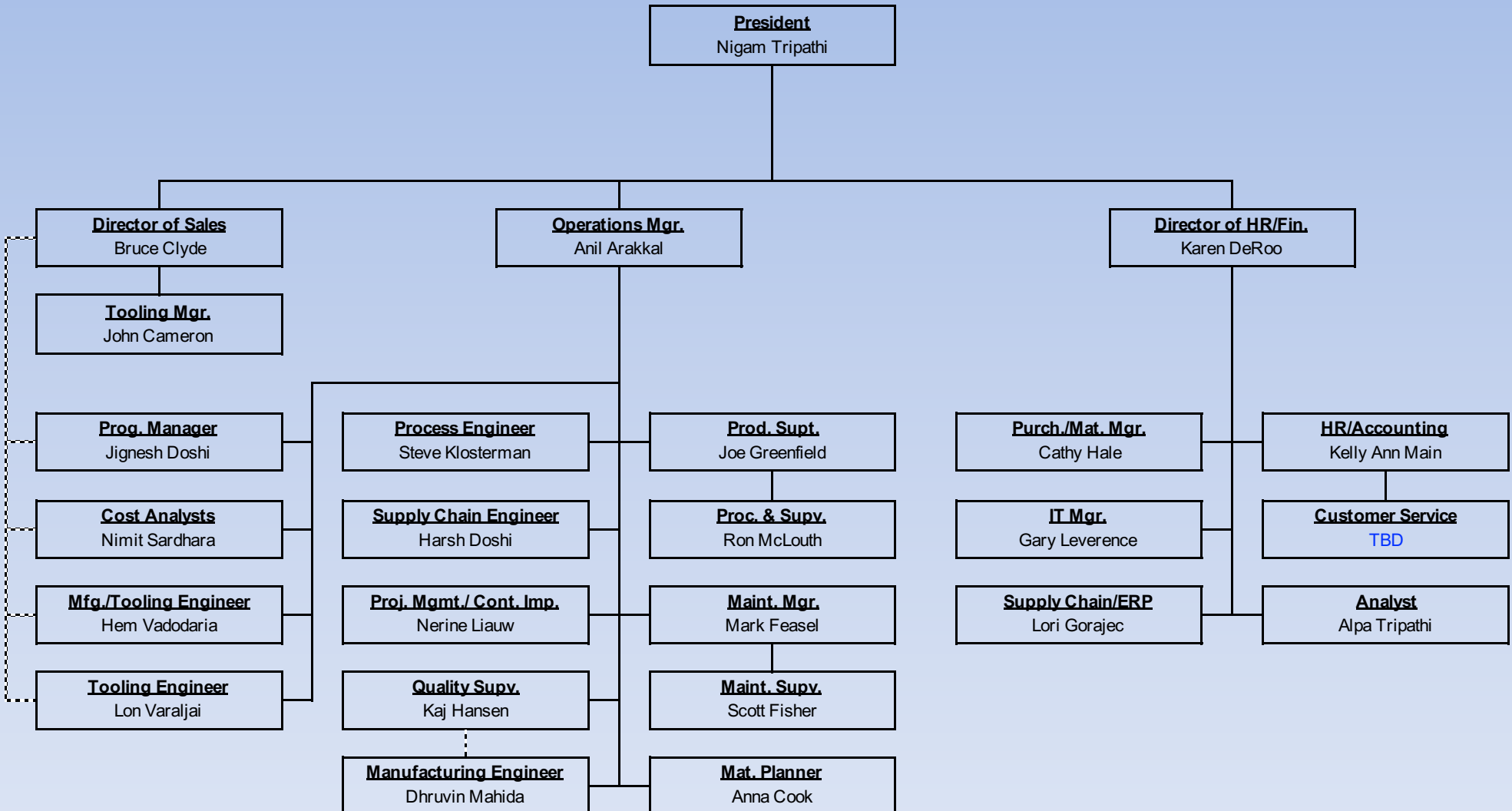
# EXPERIENCE & EXPERTISE

- In house expertise to manage from concept to production
- 80+ Years of manufacturing experience at executive level
  - OEM, Tier I, Tier II and Tier III Level experience
- Significant manufacturing background based account management and sales management team in place
- Balanced Growth of Business
  - Organic Growth – Build to Print as well as Design Responsible
  - Transfer Business – As high as 48 tools transferred in one project
  - Acquisition Growth
  - Intellectual Property Participation
    - As a partner, joint venture, supplier
- Multi Industry Manufacturing Diversification
- Diversified portfolio with balanced concentration in all industries
- Full vertical integration in certain areas of component manufacturing
- Significant diversified capabilities
- In-house capability to handle all tool maintenance and repairs
- Ability to recognize Strengths and Weaknesses
- Financially stable



# WL ORGANIZATIONAL CHART

## ORG. CHART - WLM



# CAPABILITIES AND PRODUCTS

- **OPERATION CAPABILITIES:**

- 28 IMM ranging from 17 Ton to 500 Ton
- Collapsible core based tool molding
- Applique Insert Molding
- Component Insert Molding ( Shuttle)
- Single and multi stage over molding
- Press side assembly
- Water & Dry heat annealing
- Hot stamping
- Pad printing
- Gluing
- Special packaging
- Lathes – Automatic & Semi-automatic
- Ultra sonic welding
- Drill presses
- Tapping machine
- Secondary assembly
- Secondary Machining of Plastic Components
- 3-D printing
- Multiple Solidworks licenses

- **MATERIAL CAPABILITIES:**

- PP
- Glass filled PP
- ABS
- PC/ABS
- PE
- TPE
- Acrylic
- Santoprene
- TPO
- All type of nylons
- Acetal
- HH HS Resin
- Styrene Resins
- Celcon Resins
- Engineered Resin for special application
- FR based resin
- Custom blend resins and much more.....





TONNAGE	OEM	OZ	PRESS #
17	Arburg	1.4	24
38	Arburg	2	16
38	Arburg	2	17
38	Arburg	2	19
38	Arburg	2	20
38	Arburg	2	21
38	Arburg	2	22
38	Arburg	2	23
38	Arburg	2.4	62
38	Arburg	2.4	63
75	Newbury	6	64
85	JSW	3	49
85	JSW	3	53
88	Kawaguchi	3	38
88	Kawaguchi	3	39

TONNAGE	OEM	OZ	PRESS #
125	HPM	3	26
143	Arburg	5	60
143	Arburg	5	61
165	JSW	8	45
165	JSW	8	48
165	JSW	8	50
175	Cincinnati	9.2	65
200	JSW	8	54
200	JSW	8	55
245	JSW	17	46
310	JSW	30	51
500	JSW	54	47
500	JSW	54	52

THIS CERTIFIES THAT

**W-L Molding of Michigan, LLC**  
dba WL Molding



\* Nationally certified by the: **MICHIGAN MINORITY SUPPLIER DEVELOPMENT COUNCIL**

\*NAICS Code(s): 326199

\* Description of their product/services as defined by the North American Industry Classification System (NAICS)

07/30/2018

**Issued Date**

MI03946

**Certificate Number**

07/01/2019

**Expiration Date**

A handwritten signature in black ink, appearing to read "Louis Green".

Louis Green

A handwritten signature in black ink, appearing to read "Michelle Sourie Robinson".

**Michelle Sourie Robinson, President & CEO**

By using your password (NMSDC issued only), authorized users may log into NMSDC Central to view the entire profile: <http://nmsdc.org>

*Certify, Develop, Connect, Advocate.*

\* MBEs certified by an Affiliate of the National Minority Supplier Development Council, Inc.®



# ABS Quality Evaluations

## Certificate Of Conformance

This is to certify that the Quality Management System of:

**WL Molding of Michigan LLC**

**8212 Shaver Road  
Portage, MI 49024  
U.S.A.**

has been assessed by ABS Quality Evaluations, Inc. and found to be in conformance with the requirements set forth by:

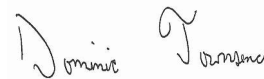
**ISO 9001:2015**

The Quality Management System is applicable to:

**THE MANUFACTURE OF INJECTION MOLDED PLASTIC FABRICATIONS INCLUDING MACHINING.**

This certificate may be found on the ABS QE Website ([www.abs-qe.com](http://www.abs-qe.com)). For certificates issued in the People's Republic of China information may also be verified on the CNCA website ([www.cnca.gov.cn](http://www.cnca.gov.cn)).

Certificate No:	58494
Effective Date:	11 April 2019
Expiration Date:	10 April 2022
Revision Date:	11 April 2019



Dominic Townsend, President



Validity of this certificate is based on the successful completion of the periodic surveillance audits of the management system defined by the above scope and is contingent upon prompt, written notification to ABS Quality Evaluations, Inc. of significant changes to the management system or components thereof.

ABS Quality Evaluations, Inc. 1701 City Plaza Drive, Spring, TX 77389, U.S.A.  
Validity of this certificate may be confirmed at [www.abs-qe.com/cert\\_validation](http://www.abs-qe.com/cert_validation).

Copyright 2011-2019 ABS Quality Evaluations, Inc. All rights reserved.



# CROSS SECTION OF DIFFERENT PRODUCTS



# TYPES OF PRODUCTS

## DECORATIVE



## FUNCTIONAL





# TYPES OF PRODUCTS

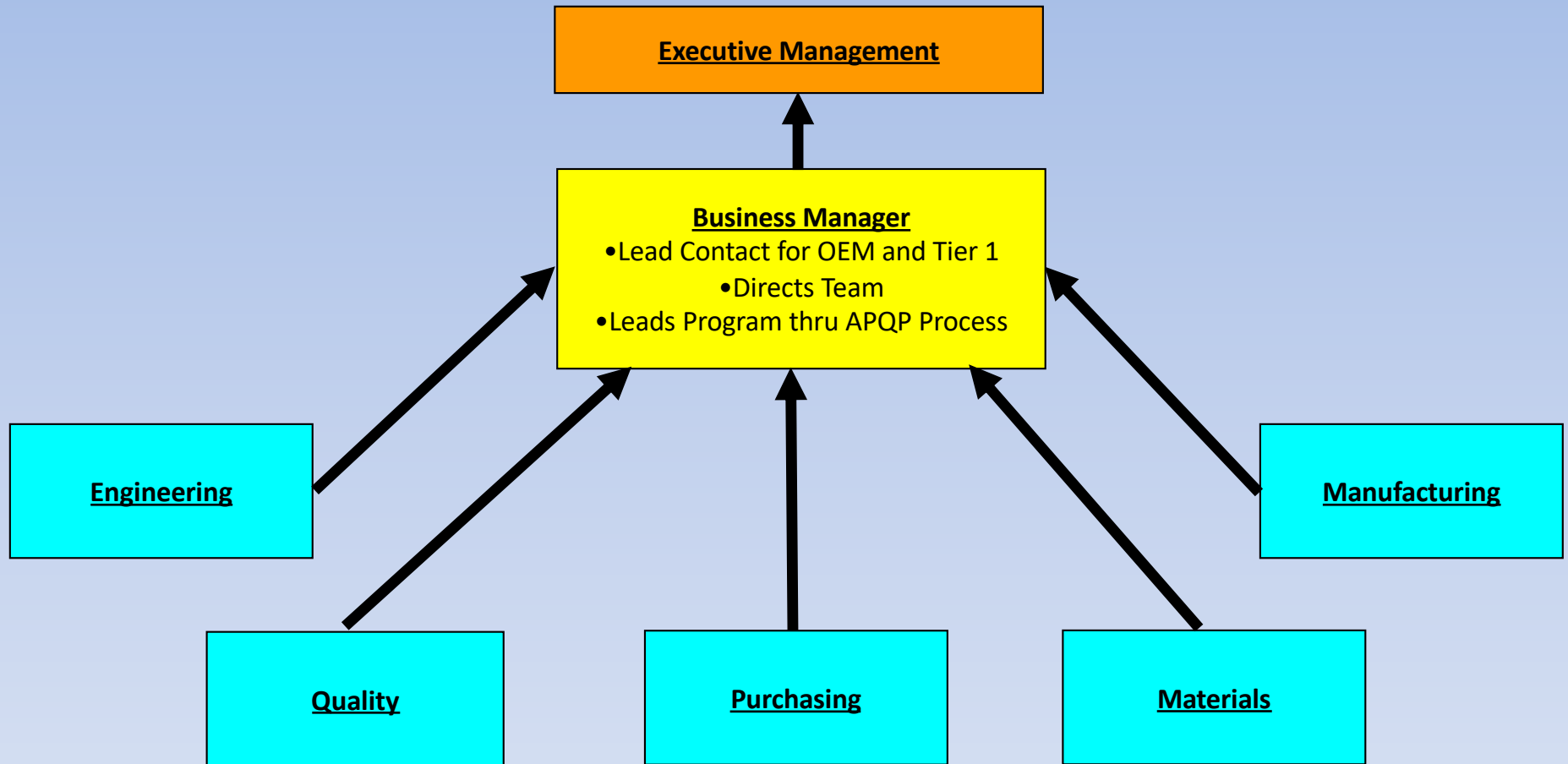
## TIGHT TOLERANCE



## INSERT MOLDED



# PROGRAM MANAGEMENT



## WHY CHOOSE US?

- ✓ Very balanced and diversified company
- ✓ Serves over 6 different industry
- ✓ No single customer concentration over 25%
- ✓ No single industry concentration over 50%
- ✓ Serves products across four countries
- ✓ Serves customers over 25 states
- ✓ Owns its own tooling in addition to customer owned tooling
- ✓ Serves low, medium and high volume parts customers
- ✓ Significant amount of capabilities under one roof
- ✓ In-house tool shop for all tool related maintenance
- ✓ Partnership with LCC tool shop for very aggressive tool price
- ✓ Serves inventors to large cap companies with same urgency





## WHY CHOOSE US?

- ✓ Strong manufacturing background.
- ✓ Large company ability in the small company environment
- ✓ Strong customer relationship (Serving over 150 different customers)
- ✓ Expertise in emergency risk management in supply chain
- ✓ Advanced Design/Engineering Capabilities
- ✓ Disciplined Program Management/Quality Processes
- ✓ Program Launch Discipline
- ✓ New, Innovative Ideas and Creativity
- ✓ Expertise in Tool Transfer and emergency tool take over for customer
- ✓ Proven Program Transfer competency
- ✓ MMBDC Certified
- ✓ Empowered Team
- ✓ Capable of understanding of SWOT position in the industry



**THANK**

**YOU**

