

Taurus

Taurus Korea
Taurus China Beijing
Taurus China Hangzhou
Taurus China Guangdong
Taurus Taiwan
Taurus Mexico
Taurus India
Taurus Malaysia
Taurus Brazil

GLOBAL SOURCING

Quality Engineered Components For The OEM

Quality Engineered Components For The OEM

GLOBAL SOURCING



Taurus

QUALITY ENGINEERED COMPONENTS FOR THE OEM



OUR MISSION

To provide the finest quality and service
at the most competitive price

QUALITY POLICY

We are committed to assuring total customer satisfaction. We recognize that the cooperation of our suppliers and interaction between all facets of our organization are essential to achieving this objective. We accept responsibility for the services we provide to our customers and the products provided by our suppliers. We will maintain a system of quality management and continuous improvement to ensure that the services and the products we provide meet the expectations of our customers.

ENVIRONMENTAL POLICY

Our Environmental Policy is to be a responsible corporate citizen in protecting the environment. We are committed to complying with accepted environmental practices, including the commitment to meet or exceed applicable legal and other requirements, to strive for continual improvement in our environmental management system, and to minimize the creation of wastes and pollution. We will, therefore, manage our processes, our materials, and our people in order to reduce the environmental impacts associated with our work.

ISO-9001:2015
REGISTERED



Taurus

Taurus Mexico

Taurus
Han

Taurus
India

THE TAURUS ADVANTAGE

- We've been in business for 40 years since 1981.
- We are a subcontract manufacturer of forgings, castings, and related components providing sourcing, engineering, technical and logistical support.
- We have 11 foreign offices providing communication, technical and logistical support, 8 strategically located sales offices, 3 warehouses, and an experienced multi-lingual support staff located in New Jersey servicing the United States and Mexico.
- We are ISO-9001:2015 and ISO-14001:2015 certified as well as CTPAT approved by US Department of Homeland Security.
- We have our own aluminum die casting foundry, Superior Taurus Industrial Corporation located in Taiwan who is IATF 16949:2016 certified.
- We assume all of the risk an exposure of sourcing overseas.
- We have confidentiality and exclusivity agreements with every supplier we subcontract.
- We qualify and develop foreign suppliers and their manufacturing, quality control and inspection processes based on industry standards, product application, function or the customer's own specific requirements.
- We provide a significant cost savings over domestic cost without sacrificing quality or delivery.
- Our PPM defects for all of our products and customers combined is < 0.05 PPM.
- We handle all of the raw material and component scheduling, manufacturing, quality control inspections, packaging, transportation, importing, customs clearance, financing, insurance, warehousing and delivery.
- We are EDI compatible and offer paperless invoicing and attractive payment terms.
- We guarantee the price, quality and delivery of the products we sell.
- All of our products are produced and inspected to U.S. industry standards and metallurgically certified.
- We maintain a safety stock of inventory in our warehouse.
- We sell on net terms so that the customer doesn't pay anything until they have received and verified our parts are acceptable.
- We provide uniform marking, AIAG bar code labeling and our own standardized packaging.
- We maintain complete traceability for identification and segregation purposes.
- We are an approved source to both Tier I and Tier II automotive manufacturers as well as many other multi-national OEM's and industrial customers.



Taurus

Taurus Mexico

Taurus
Han

Taurus
India

WARRANTY

Taurus International Corporation warrants that the products supplied by us have been manufactured in accordance with their respective drawings and specifications and are free from any defect in either material or workmanship. Our obligation and liability herein shall be limited to providing replacement or credit at our discretion for any product, which is returned by the original purchaser within (1) one year from the date of purchase. All claims must be made in writing and we shall then have a reasonable period of time to determine the validity of the claim and provide disposition of any product which has been claimed defective.

Taurus International Corporation assumes no liability for any consequential or incidental damages to the purchaser as a result of any such defect and provides no other warranty of functionality or merchantability for any particular use or otherwise either expressed or implied. This warranty does not apply to any of our products which have been repaired, modified, or altered in any way, subjected to negligence, or mishandled by the purchaser, so as in our opinion to have adversely affected the products performance and reliability nor to any product which has been used for any purpose for which it has not been designed or intended.

There shall be no waiver, alteration or modification of the foregoing warranty unless made in writing and signed by an executive officer of the company. We further reserve the right to change or cancel this warranty at any time and without notification.

Interpretation of these terms and conditions of warranty is subject and construed according to the laws of the state of New Jersey.



Taurus

Taurus Mexico

Taurus
Han

Taurus
India

CUSTOMS - TRADE
PARTNERSHIP AGAINST TERRORISM



*In recognition of your commitment to partnership,
and in appreciation for joining with us to secure
the international supply chain and protect our country's security,*

U.S. Customs and Border Protection

is pleased to certify your membership in the

CTPAT
***Customs - Trade
Partnership Against Terrorism***

and to present this certificate to

Taurus International Corporation

During the month of December, 2003
at Washington, D.C.

Commissioner

Taurus

Taurus Mexico

**Taurus
Hank**

**Taurus
India**

bsi.



Certificate of Registration

QUALITY MANAGEMENT SYSTEM - ISO 9001:2015

This is to certify that:

Taurus International Corporation
275 North Franklin Turnpike
Ramsey
New Jersey
07446
USA


Holds Certificate No:

FM 78754

and operates a Quality Management System which complies with the requirements of ISO 9001:2015 for the following scope:

Global sourcing and supply of forgings, castings and related components for commercial and automotive OEM's and aftermarket.

For and on behalf of BSI:


Jessica Patel, Senior Vice President, Assurance Americas

Original Registration Date: 2004-04-15

Latest Revision Date: 2025-03-11

Effective Date: 2025-04-15

Expiry Date: 2028-04-14

Page: 1 of 1



...making excellence a habit.™

This certificate remains the property of BSI and shall be returned immediately upon request.
An electronic certificate can be authenticated [online](#). Printed copies can be validated at www.bsigroup.com/ClientDirectory.
To be read in conjunction with the scope above or the attached appendix.
Information and Contact: BSI, Kitemark Court, Davy Avenue, Knowlhill, Milton Keynes MK5 8PP. Tel: +44 345 080 9000
BSI Assurance UK Limited, registered in England under number 7805321 at 389 Chiswick High Road, London W4 4AL, UK.
A Member of the BSI Group of Companies.

Taurus

Taurus Mexico

Taurus Han

Taurus India

bsi.



Certificate of Registration


ENVIRONMENTAL MANAGEMENT SYSTEM - ISO 14001:2015

This is to certify that: **Taurus International Corporation**
275 North Franklin Turnpike
Ramsey
New Jersey
07446
USA

Holds Certificate No: **EMS 593821**

and operates an Environmental Management System which complies with the requirements of ISO 14001:2015 for the following scope:

The environmental risks associated with inter-office activities related to the global sourcing and supply of forgings, castings, and related components for commercial and automotive OEM's and aftermarkets.


Jessica Patel, Senior Vice President, Assurance Americas

For and on behalf of BSI:

Original Registration Date: 2013-11-21
Latest Revision Date: 2025-03-11

Effective Date: 2025-03-26
Expiry Date: 2028-03-25

Page: 1 of 1



...making excellence a habit.™

This certificate remains the property of BSI and shall be returned immediately upon request.
An electronic certificate can be authenticated online. Printed copies can be validated at www.bsigroup.com/ClientDirectory
To be read in conjunction with the scope above or the attached appendix.
Information and Contact: BSI, Kitemark Court, Davy Avenue, Knowlhill, Milton Keynes MK5 8PP. Tel: +44 345 080 9000
BSI Assurance UK Limited, registered in England under number 7905321 at 389 Chiswick High Road, London W4 4AL, UK.
A Member of the BSI Group of Companies.

Taurus

Taurus Mexico

Taurus Han

Taurus India

Global Alliance

Taurus Malaysia

QUALITY ENGINEERED COMPONENTS FOR THE OEM

No. 26A, Jalan Todak 2, Seberang Jaya, 13700 Prai, Penang, Malaysia

Telephone: 011-604-399-6348 • Fax: 011-604-398-6348 • Mobile: 011-6012-408-6112 • Email: c.choy@taurus-malaysia.com

Contact: **CK Choy**

Taurus Mexico

QUALITY ENGINEERED COMPONENTS FOR THE OEM

Cerro Mesontepec 72, Colinas del Climatorio, Queretaro, Qro. Mexico, 76090

Telephone: 011-52-442-2620264 • Fax: 011-52-442-2620264 • Mobile: 011-52-1442-173-0326 • Email: j.martinez@taurus-mexico.com

Contact: **Jesus Martinez**

Taurus India

QUALITY ENGINEERED COMPONENTS FOR THE OEM

B-701 / 702 "Voyage", Gat No. 545 • Barhadewadi, Moshi Pune - 412105, Maharashtra India

Fax: 011-91-20 27492202 • Mobile: 011-91-94-22014201 • Email: l.mohan@taurus-india.com

Contact: **Lalit Mohan**

Taurus Brazil

QUALITY ENGINEERED COMPONENTS FOR THE OEM

Alameda Sarnen, 144 Residencial Zurich Dorf, Valinhos-SP, Brazil 13271-796

Telephone: 011-57-6-8744321 • Mobile: 011-55-19-99186-7900 • Email: r.okubo@taurus-brazil.com

Contact: **Rodrigo Okubo**

Taurus

Taurus Mexico

Taurus Hana

Taurus India

Global Alliance

Taurus Korea

QUALITY ENGINEERED COMPONENTS FOR THE OEM

Magog Apartment #507-202, Magog M-Valley 5B, Magog Seo 1Rr# 111-11, Gangseo-Ku, Seoul, Korea
Telephone: 011-82-22-648-3839 • Fax: 011-82-22-642-1674 • Mobile: 011-82-10-5258-0813 • E-mail: c.kang@taurus-korea.com
Contact: **Chi Won Kang**

Taurus China Hangzhou

QUALITY ENGINEERED COMPONENTS FOR THE OEM

Room 408, 4th Floor, B Building, Jian Hua Industrial Park, 207-208 Qi Gu Den, Zhou Shan Dong Road,
Gong Su District, Hangzhou, 310015, China
Telephone: 011-86-571-8586-5398 • Fax: 011-86-571-8586-5066 • Mobile: 011-86-133-9656-4571 • Email: a.dai@taurus-china.com
Contact: **Alan Dai**

Taurus China Beijing

QUALITY ENGINEERED COMPONENTS FOR THE OEM

Yin He Da Jie, Hong Xing Li, 6-1-402, Langfang City, Hebei Province, 065000, China
Telephone: 011-86-316-521-6431 • Fax: 011-86-316-213-3637 • Mobile: 011-86-159-3160-3615 • Email: h.su@taurus-china.com
Contact: **Heming Su**

Taurus China Guangdong

QUALITY ENGINEERED COMPONENTS FOR THE OEM

Office: 2605, #8 Building, Yinhugu Garden, Meiban Road, Bantian, Longgang District, Shenzhen, Guangdong Province, China 518131
Telephone: 011-86-158-8948-2702 • Email: s.chow@taurus-china.com
Contact: **Sky Chow**

Taurus Taiwan

QUALITY ENGINEERED COMPONENTS FOR THE OEM

13F, No.21, MeiShu E6 Street, KuShan District, Kaohsiung, Taiwan
Telephone: 011-886-7-551-3587 • Fax: 011-886-7-532-2816 • Mobile: 011-886-931-927-781 • Email: e.lai@taurus-taiwan.com
Contact: **Eric Lai**

Taurus

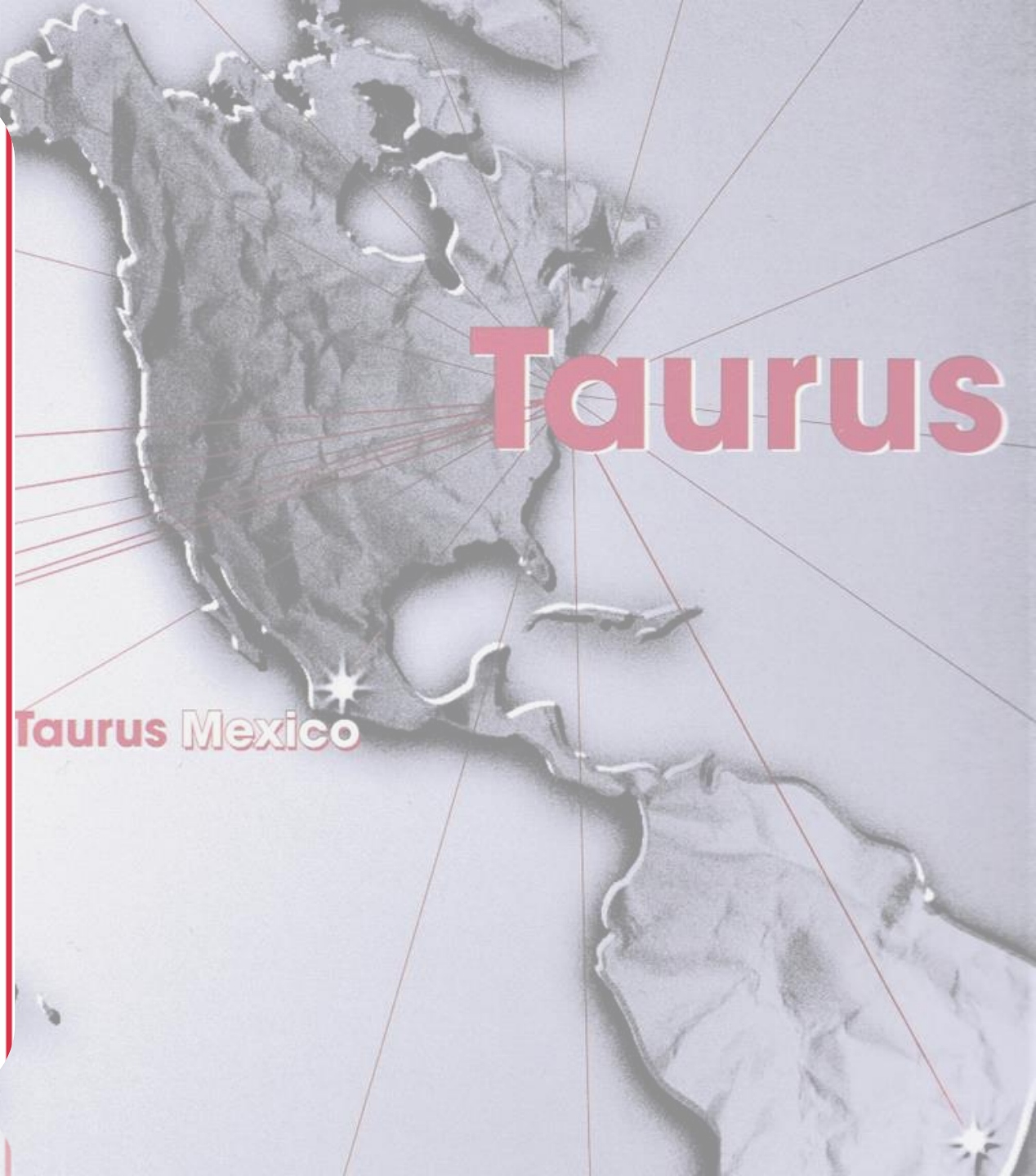
Taurus Mexico

Taurus Hang

Taurus India

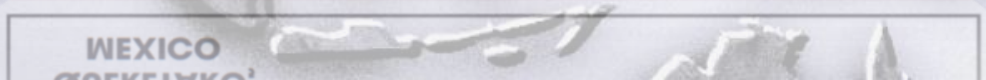
Taurus

Warehouse Locations



Taurus
Han

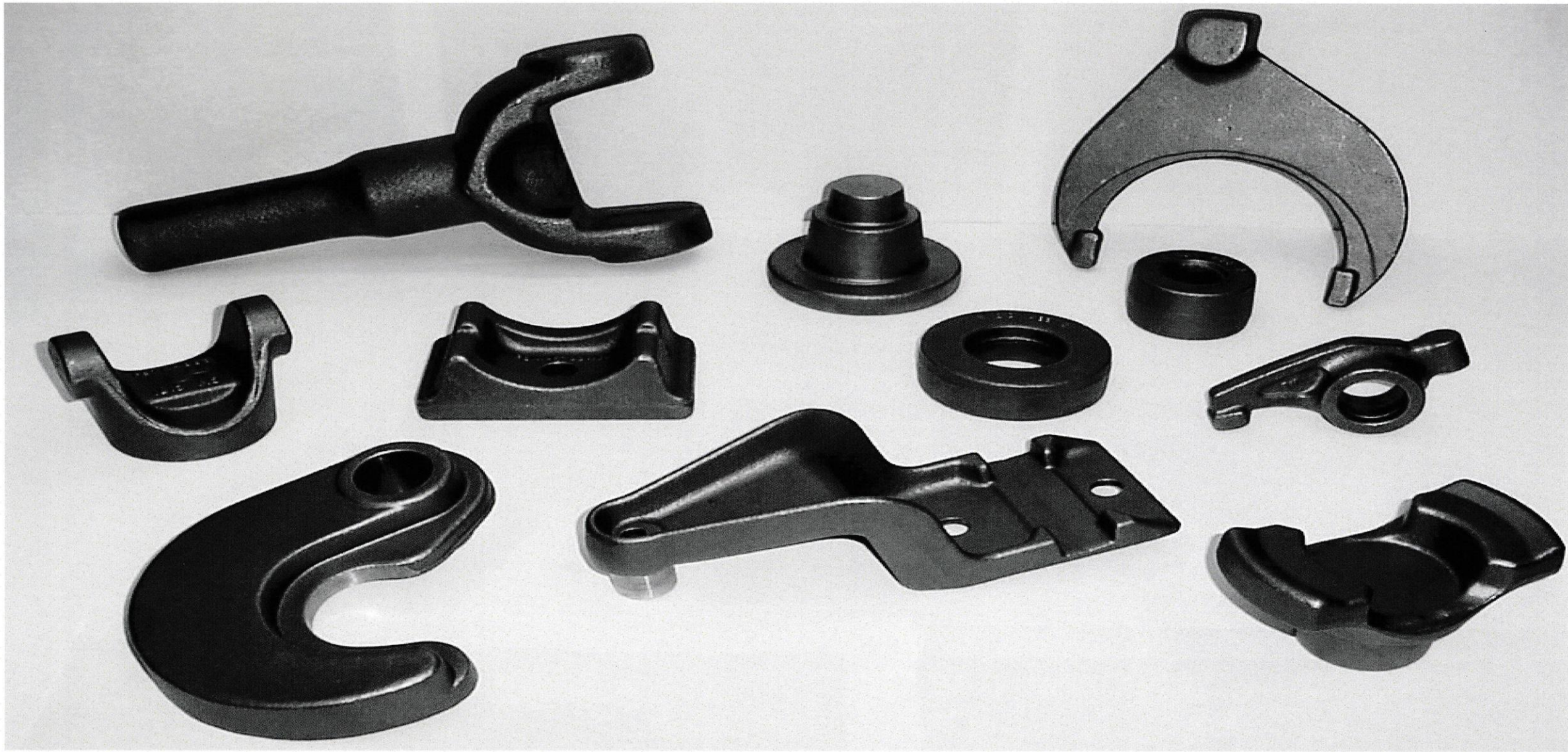
Taurus
India



Taurus

QUALITY ENGINEERED COMPONENTS FOR THE OEM

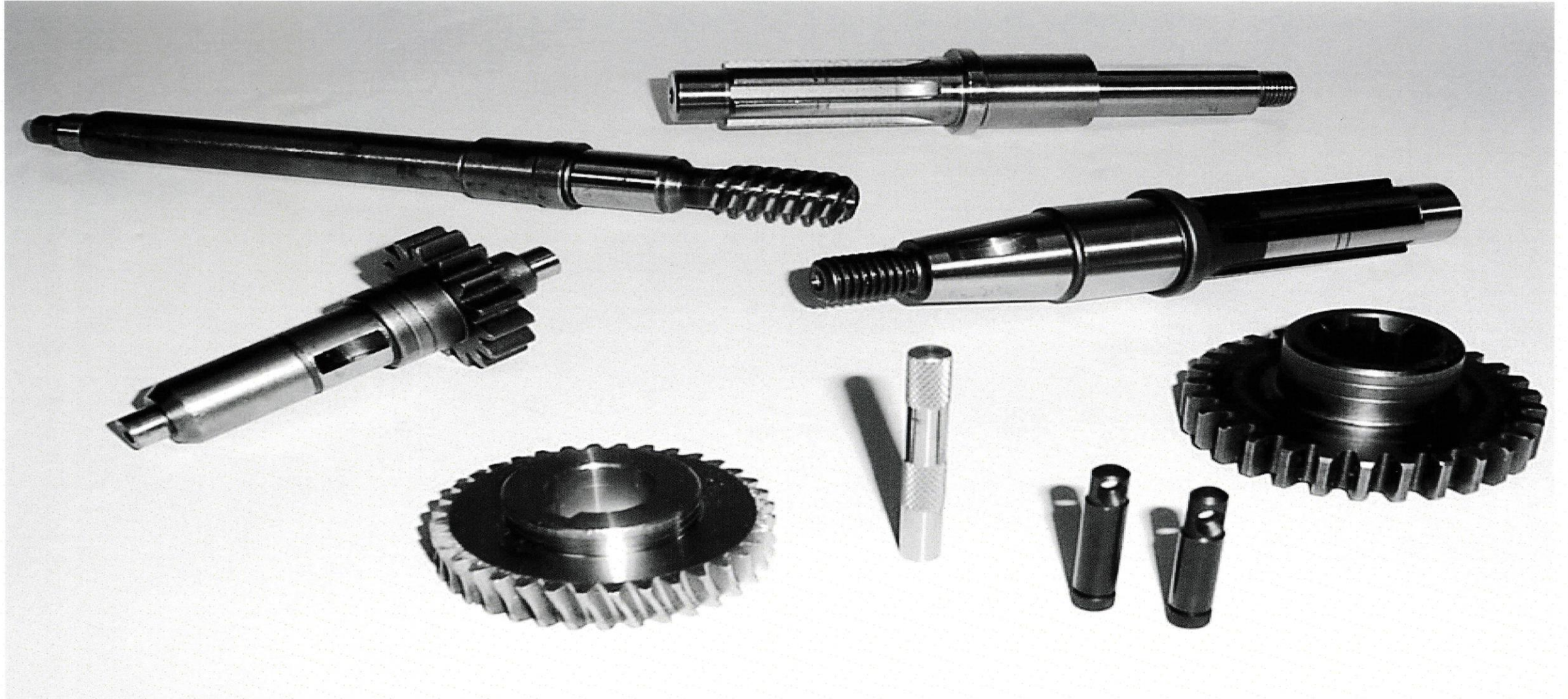
Forgings



Taurus

QUALITY ENGINEERED COMPONENTS FOR THE OEM

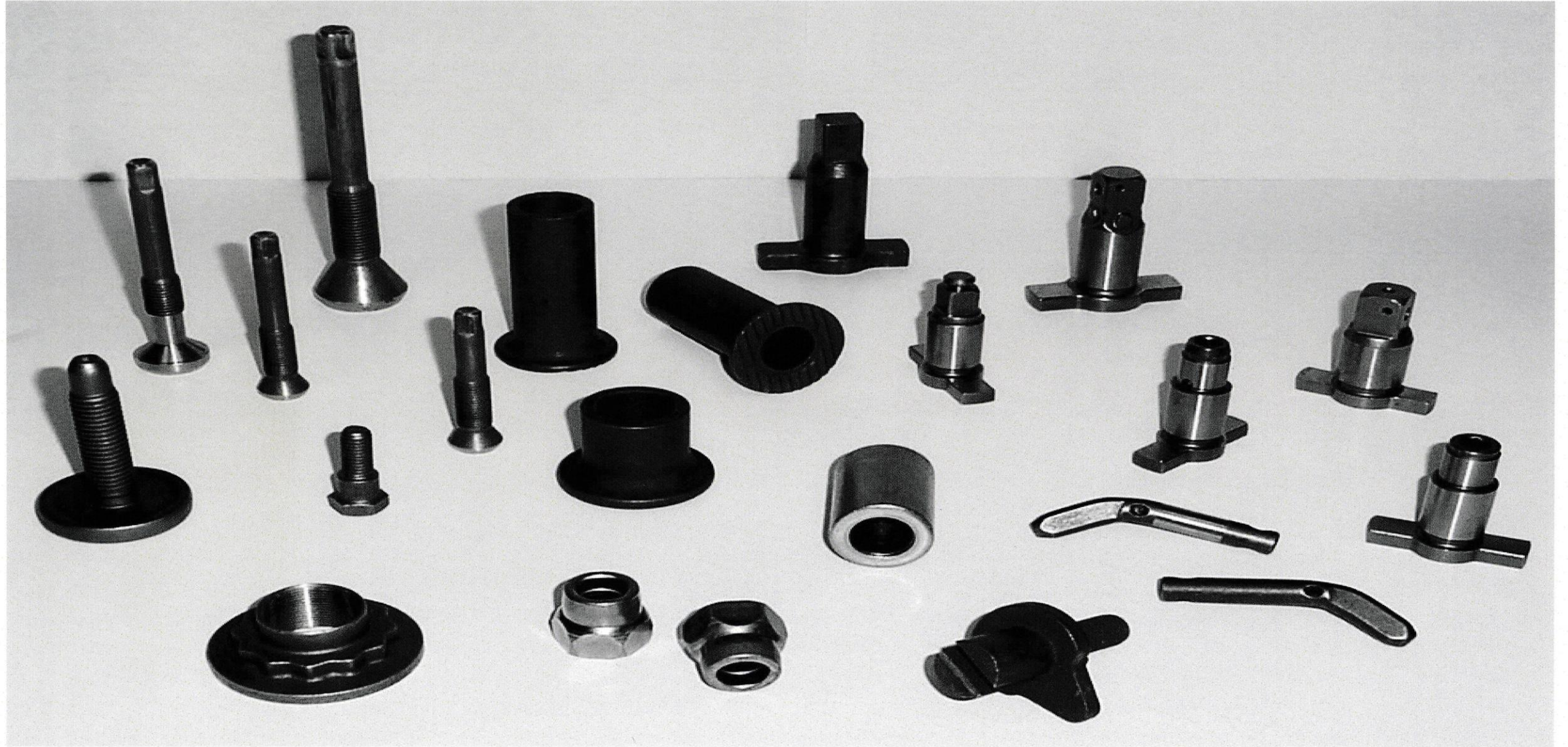
Machined Components



Taurus

Cold Formed & Headed Components

QUALITY ENGINEERED COMPONENTS FOR THE OEM



Taurus

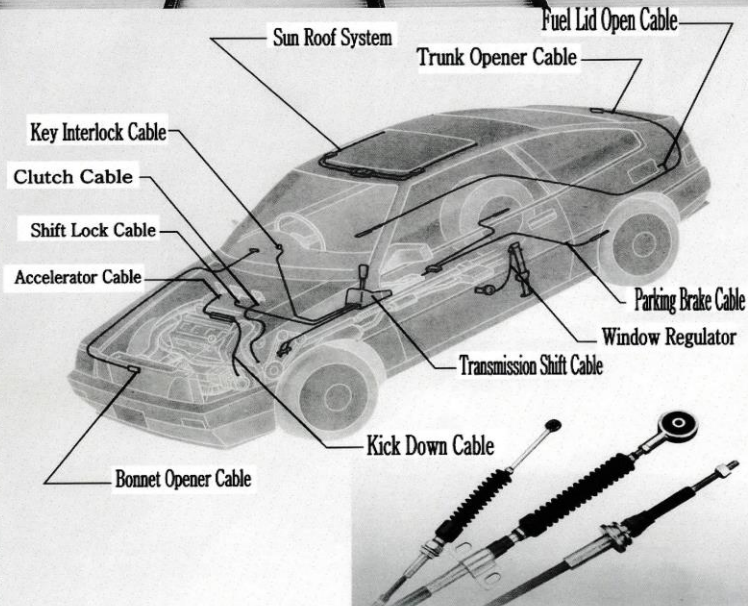
Control Cables

QUALITY ENGINEERED COMPONENTS FOR THE OEM



PRODUCTS TYPE

- Hand Brake Cable
- Park Brake Cable
- Accelerator Cable
- Engine Stop Cable
- Choke Cable
- Clutch Cable
- Transmission Shift Cable
- Shift Lock Cable
- Hood Release Cable
- Fuel Door Release Cable
- Trunk/Deck Release Cable
- Speedometer Cable
- Kick Down Cable
- Keyinterlock Cable
- HVAC Cable
- Sun Roof Cable
- Window Regulator



Taurus

Taurus Mexico

Taurus
HAI

Taurus
India

**LOOKING FOR COST SAVINGS
WITHOUT SACRIFICING
QUALITY OR DELIVERY?**

**WANT LOCAL TECHNICAL
AND LOGISTICAL SUPPORT?**

Let us quote your requirements...

Taurus

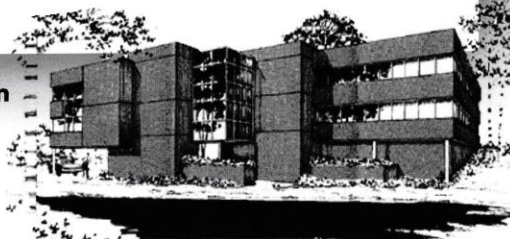
We are the premier Global Sourcing Company in the United States supplying forgings, castings and related quality engineered components to the OEM since 1981.

- Experienced Multi-Lingual Support Staff
- Offices Located Worldwide
- Local Sales Associates
- Pre-Qualified Suppliers
- Local Warehousing
- EDI Compatibility
- Standardized Packaging
- Bar Code Labeling
- Uniform Documentation
- Just-In-Time Delivery
- All Inclusive Pricing
- ISO 9001:2015
- ISO 14001:2015

Taurus International Corporation

275 North Franklin Tpk.
Ramsey, New Jersey 07446
Main Tel: 201-825-2420
Fax: 201-825-1437

Visit us on the web at: www.taurusinternational.com



Taurus Mexico

Taurus

Taurus
Har

Taurus
India