

## Z4V7H336-11Z-M20



- **Double-insulated**
- **Design to EN 50041**
- **Thermoplastic enclosure**
- **1 Cable entry M 20 x 1.5**
- **only for positioning tasks**
- **Wide range of alternative actuators**
- **Lever angle adjustable in 10° steps**
- **Good resistance to oil and petroleum spirit**
- **Actuator heads can be repositioned by 4 x 90°**
- **Snap action with constant contact pressure up to switching point**

### Data

#### Ordering data

Product type description	Z4V7H 336-11Z
Article number (order number)	101155768
EAN (European Article Number)	4030661176598
eCI@ss number, Version 9.0	27-27-06-01

#### Approval - Standards

Certificates	cULus CCC EAC
--------------	---------------------

#### General data

Product name	336 roller lever 7H
Housing construction form	Norm construction design
Enclosure material	Plastic, glass-fibre reinforced thermoplastic, self-extinguishing
Material of the contacts, electrical	Silver
Lever material	Metal film
Roller material	Plastic
Gross weight	165 g

## General data - Features

Number of auxiliary contacts	1
Number of safety contacts	1

## Safety appraisal

Standards	BG-GS-ET-15 ISO 13849-1 EN 60947-5-1
Mission Time	20 Year(s)

## Safety appraisal - Safety outputs

B10d Normally-closed contact (NC)	20,000,000 Operations
-----------------------------------	-----------------------

## Mechanical data

Actuating element	Roller lever
Mechanical life, minimum	30,000,000 Operations
Actuating speed, maximum	2.5 m/s
Note (Actuating speed)	Actuating speed with actuating angle 30° to switch axis
Note Bounce duration	Bounce duration in accordance with actuating speed
Actuating torque, minimum	0.3 Nm

## Mechanical data - Connection technique

Terminal Connector	Screw connection
Cable section, minimum	0.75 mm <sup>2</sup>
Cable section, maximum	2.5 mm <sup>2</sup>
Note (Cable section)	All indications about the cable section are including the conductor ferrules.

## Mechanical data - Dimensions

Height of sensor	173.5 mm
Length of sensor	57 mm
Width of sensor	40.5 mm

## Ambient conditions

Protection class	IP67
Ambient temperature, minimum	-30 °C
Ambient temperature, maximum	+80 °C

## Ambient conditions - Insulation value

Rated impulse withstand voltage	6 kV
---------------------------------	------

## Electrical data

Thermal test current	10 A
Required rated short-circuit current to EN 60947-5-1	1,000 A
Utilisation category AC-15	230 VAC
Utilisation category AC-15	4 A
Utilisation category DC-13	24 VDC
Utilisation category DC-13	4 A
Switching element	NO contact, NC contact
Switching principle	Snap switch element
Switching frequency	5,000 /h
Switchover time, maximum	2 ms

## Ordering code

Product type description:

(1)(2) 336-(3)Z(4)-(5)-(6)-(7)

(1)

**Z** Snap action

**T** Slow action (not available for AF/S)

(2)

**S** Plunger S

**R** Roller plunger R

**H** Roller lever H

**10H** Rod lever 10H

**7H** Roller lever 7H

**1K** Offset roller lever 1K

**3K** Angle roller lever 3K

**RMS** Brass roller

(3)

**11** 1 NO contacts/1 NC contact

**02** 2 NC contact

**20** 2 NO contacts, (switches with 2 NO contacts are not suitable for safety applications)

**01/01** 1 NC contact left / 1 NC contact right

(4)

**H** Slow action with staggered contacts

**UE** Slow action with overlapping contacts

(5)

**without** Cable entry M20

**NPT** Cable entry NPT 1/2"

**ST** M12 connector with A-coding

**ST-2310** M12 connector with B-coding

(6)

**2138** Roller lever 7H for position switches with safety function

(7)

**1637** Gold-plated contacts

## Pictures

### Product picture (catalogue individual photo)



ID: k336hf02

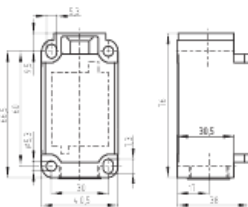
| 177,9 kB | .png | 74.083 x 210.608 mm - 210 x 597

Pixel - 72 dpi

| 475,4 kB | .jpg | 149.578 x 425.803 mm - 424 x 1207

Pixel - 72 dpi

### Dimensional drawing basic component



ID: 1-336g01

| 51,4 kB | .cdr |

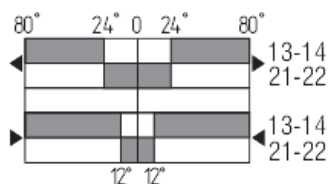
| 107,0 kB | .jpg | 352.778 x 245.181 mm - 1000 x 695

Pixel - 72 dpi

| 4,1 kB | .png | 74.083 x 51.506 mm - 210 x 146 Pixel

- 72 dpi

### Switch travel diagram



ID: kh335s17

| 25,7 kB | .cdr |

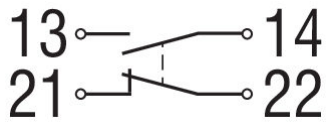
| 2,4 kB | .png | 74.083 x 40.569 mm - 210 x 115 Pixel

- 72 dpi

| 85,9 kB | .jpg | 352.778 x 193.322 mm - 1000 x 548

Pixel - 72 dpi

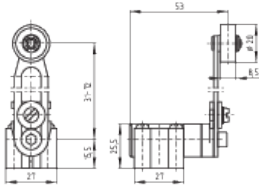
## Diagram



ID: k1o1sk01

| 52,2 kB | .jpg | 352.778 x 143.581 mm - 1000 x 407  
Pixel - 72 dpi

## Dimensional drawing actuator



ID: 1h355g02

| 30,2 kB | .cdr |  
| 104,9 kB | .jpg | 352.778 x 243.769 mm - 1000 x 691  
Pixel - 72 dpi  
| 9,6 kB | .png | 74.083 x 51.153 mm - 210 x 145 Pixel  
- 72 dpi

K.A. Schmersal GmbH & Co. KG, Möddinghofe 3, D-42279 Wuppertal

The details and data referred to have been carefully checked. Images may diverge from original. Further technical data can be found in the manual. Technical amendments and errors possible.

Generated on 522021-02-08T17:42:52+01:000502Europe/BerlinMon, 08 Feb 2021 17:42:52

+010052pmMonday.08pm28Europe/BerlinCET4202Europe/BerlinFebruary2021Mon, 08 Feb 2021 17:42:52

+010002pm28