

Warranty and Owners Manual

Rolling Screen

Congratulations on your purchase and installation of exterior rolling screens. Your screens will offer you several benefits and long life if properly maintained and used. Most customers say that they use their screens much more than they envisioned and we encourage you to use them every day. Roll screens are an excellent product for shading and temperature control as well as noise reduction and offer added light security to your home or condominium. Like any moving product, the more they are used, the better they will continue to work and give you the maximum life possible. Enclosed you'll find everything needed to give your shutter the best life possible.

Zip Tex: Real Life Expectations

Insect and Shade

- Don't operate in windy conditions.
- Retract Zip Tex screens if winds exceed 40 mph.
- Storm Tex screens can be left down during high winds, damage may occur during storms
- Clean fabric once a year, with soap and water.
- Fabric should not be overly tight, loose fitment is best suited for proper operation
- Spray silicone in tracks once a year.
- Don't operate in temps below freezing.
- Let dry after a rain, before running up.



Vinyl with Windows

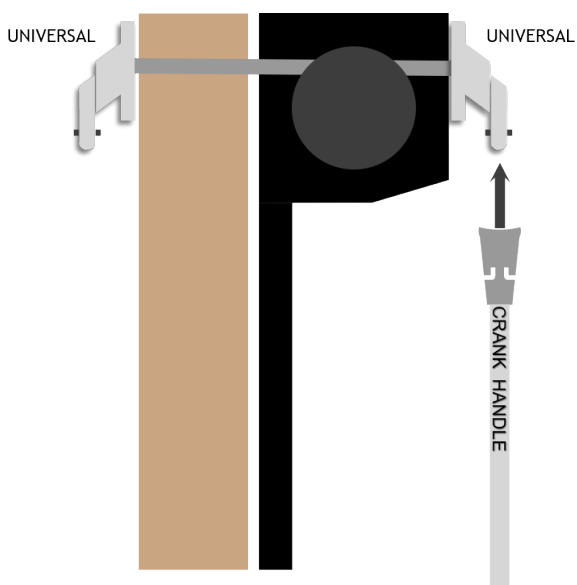
- Rolling clear Vinyl will not look like glass, expect imperfections, such as waves, bumps, light scuffs and dimples.
- Don't operate in windy conditions.
- Retract if winds exceed 40 mph winds.
- Clean fabric once a year, with soap and water only, chemicals will degrade the vinyl.
- Spray silicone in tracks once a year.
- Apply a coat of IMAR wax quarterly to prevent sticking and causing operation failure.
- Don't operate in temps below 50°.
- After heavy moisture days, clear vinyl will fog. Leave down during daylight to allow drying to take place.



Manual Gear or Override Operated

With gear operated screens, you will have what is referred to as a “gear universal” installed either above your opening or the “universal” can be mounted directly to the screen housing. In order to operate your screen you must first connect the “crank handle” to the gear universal. To do this simply place the female-end of the handle over the male-end of the universal and twist the handle until it locks into place.

The opening and closing turn directions will vary according to which side your screen is geared.



TO OPEN

You must first determine the opening turn direction for your screen. To determine this easily turn your crank handle in a clockwise motion. If you experience resistance stop immediately because the gear's bottom stop is engaged. Once you have determined the opening turn direction, crank your screen until it is fully open and comes to a stop. **DO NOT FORCE THE SCREEN BEYOND THIS STOP POINT.**

DO NOT FORCE THE SCREEN BEYOND ITS STOP POINT.

TO CLOSE

Now that you know the closing turn direction, just crank the screen down until it gently stops. Please be careful not to continue turning your crank handle past this stop point as you can cause the screen to start to roll backwards on the axle and break.

IF MOTOR STILL HAS POWER, AND YOU TRY TO CRANK IN OPPOSITE DIRECTION, CRANK WON'T WORK.

Motorized Switch Operator

Motorized screens come with several switch style options.

We highly recommend a “momentary” style switch that requires you to actually hold the switch while the shutter opens and closes.

TO OPEN

Push your SWITCH in the upward direction,

With a momentary switch hold the switch until the screen stops.

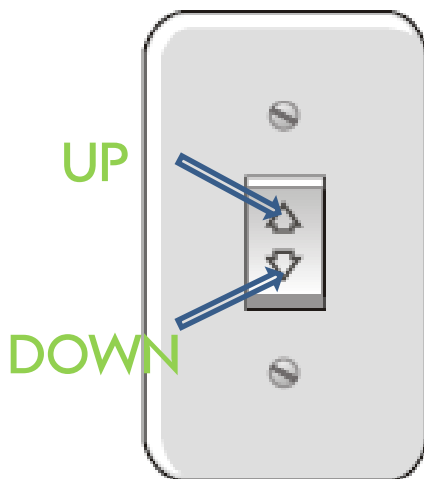
With a maintained switch you must reset the switch to the middle or neutral position once the shutter has stopped. If you keep the switch in an open or closed position, electricity is flowing to your motor at all times and if a power surge happens, you can damage your motor.

TO CLOSE

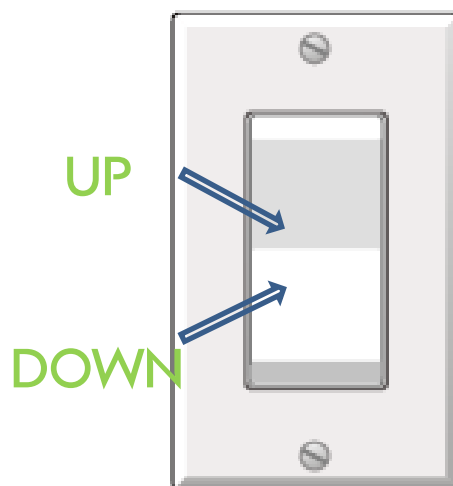
Simply push the SWITCH in the down position and hold, if it is a momentary switch.

If its a maintained switch make sure to reset the switch to neutral once the shutter is closed.

ROCKER SWITCH



DECORA SWITCH



Motorized SOMFY Remote Operator

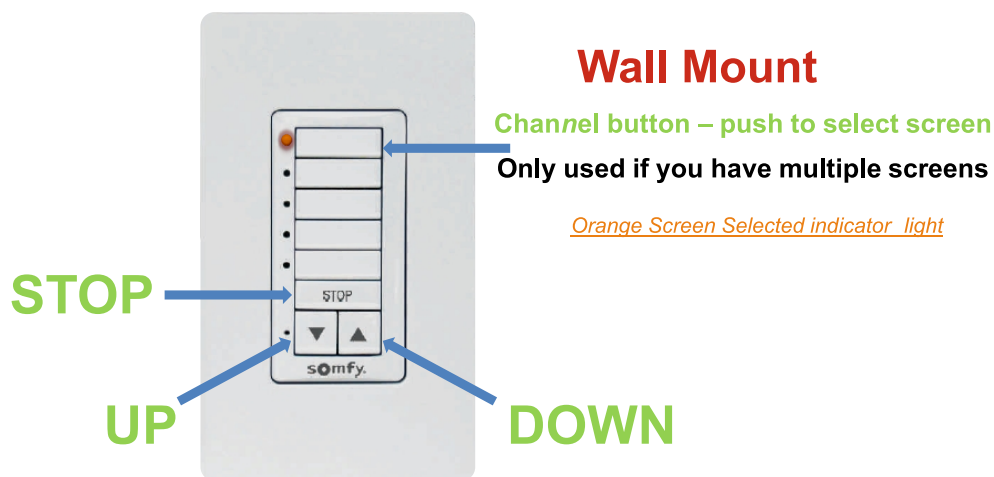
Motorized remote screens come with several switch styles and remote options. Below is the most typical transmitter styles.

TO OPEN

Push your REMOTE in the upward direction, with a momentary switch hold the switch until the screen stops. With a maintained switch you must reset the switch to the middle or neutral position once the shutter has stopped. If you keep the switch in an open or closed position, electricity is flowing to your motor at all times and if a power surge happens, you can damage your motor.

TO CLOSE

Simply push the REMOTE in the down position and hold, if it is a momentary switch. If its a maintained switch make sure to reset the switch to neutral once the shutter is closed.



Motorized Hammerhead Remote Operator

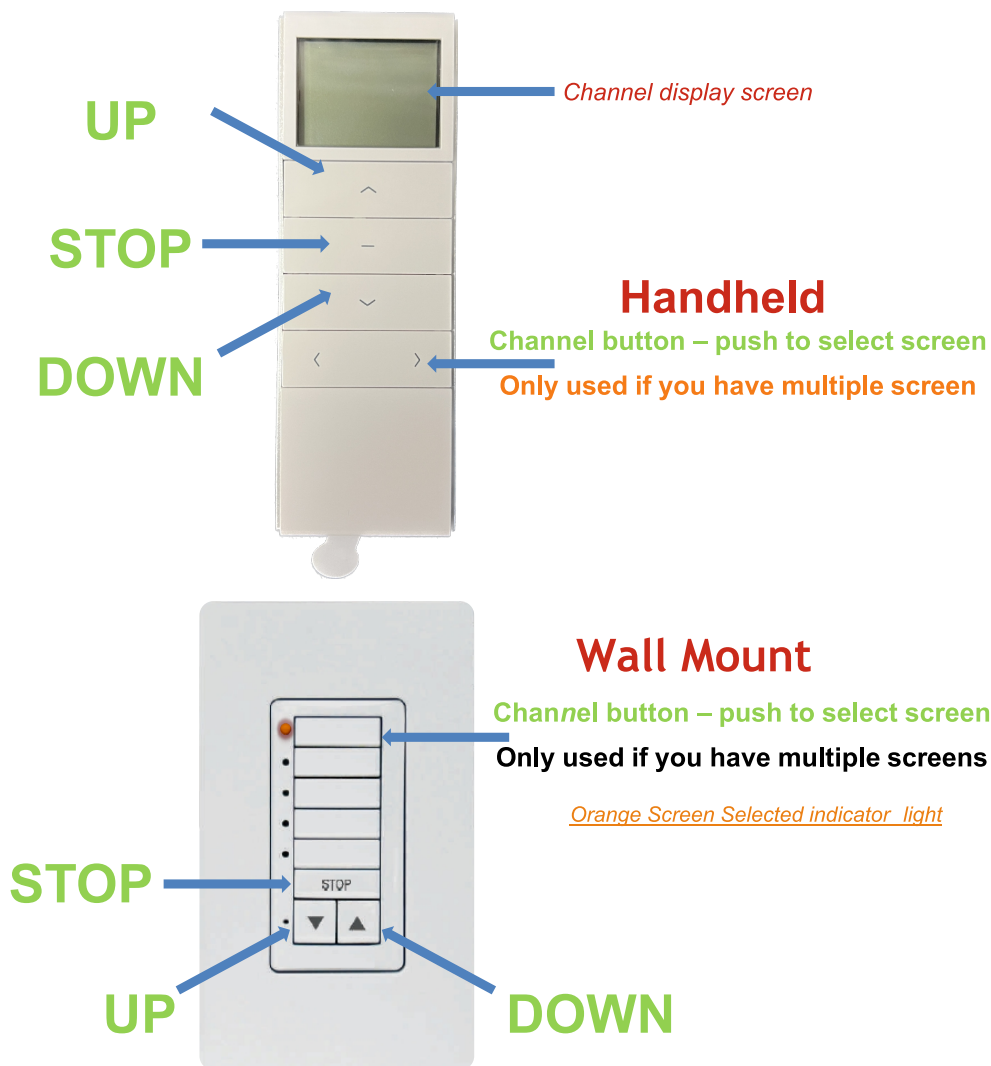
Motorized remote screens come with several switch styles and remote options. Below is the most typical transmitter styles.

TO OPEN

Push your REMOTE in the upward direction, with a momentary switch hold the switch until the screen stops. With a maintained switch you must reset the switch to the middle or neutral position once the shutter has stopped. If you keep the switch in an open or closed position, electricity is flowing to your motor at all times and if a power surge happens, you can damage your motor.

TO CLOSE

Simply push the REMOTE in the down position and hold, if it is a momentary switch. If its a maintained switch make sure to reset the switch to neutral once the shutter is closed.



Maintenance and Fabric Care:

Frame Care

Screen frames should be washed with fresh water and mild soap and lubricated at least once per year. Sand/dirt and salt will have a tendency to build up on these parts if they are not properly maintained.

All side tracks should be lubricated with clear dry silicone spray in order to keep your screens motion at top performance. All caulked areas should be examined for cracks that occur over time. This should be addressed with each exterior painting of your home or every two years.

If you do not wish to wash and lube your screens, please refer back to your local dealer that installed your product for a service agreement.

Twitchell Fabrics

- To clean all Textilene® Brand Fabrics:
- Sponge wipe with a solution of one-cup mild detergent with one-cup household bleach in three gallons of water.
- Rinse thoroughly with clear water and air-dry completely.
- Treat any stains as soon as possible.
- **Do not use any abrasive household cleaners**

Sunbrella

One of the best ways to keep Sunbrella® fabrics looking good and to delay the need for deep or vigorous cleaning is to hose fabrics off on a monthly basis with clear water. This practice will help prevent dirt from becoming deeply embedded in the fabric and eliminate the need for more frequent vigorous cleaning. In most environments, a thorough cleaning will be needed every two to three years.

When cleaning Sunbrella fabrics, it is important to observe the following:

Always use a mild detergent such as Woolite or Dawn. Water should be cold to lukewarm. Rinse thoroughly to remove all detergent residue. Air dry only. Never apply heat to Sunbrella fabrics.

General or light cleaning

To clean Sunbrella follow these simple steps: Brush off loose dirt. Hose down. Prepare a cleaning solution of water and mild detergent such as Woolite or Dawn. Use a soft bristle brush to clean. Allow cleaning solution to soak into the fabric. Rinse thoroughly until all detergent residues are removed. Air dry. May not require re-treatment depending on the age of the fabric.

If stubborn stains persist, you can use a diluted chlorine bleach/detergent mixture for spot cleaning of mildew, roof run-off or other similar stains (see our Stain Chart for specific recommendations).

Maintenance and Fabric Care:

Weblon fabric

- Keep clean. Occasional hosing with clear water will prevent dirt accumulation. Most dirt accumulation can be removed by mild soap, water and a soft scrub brush. Rinse thoroughly. In extreme cases, most dirt can be removed by applying half strength bleach and brushing softly to cover thoroughly the necessary area. Allow solution to remain for two or three minutes, then thoroughly rinse with clear water, protecting surrounding materials or plant growth that might be damaged by the bleach.
- In areas particularly conducive to mildew, brush away any visible accumulation of dirt on underside. Mildew can grow on dirt, but does not grow on or attack the Regatta™ vinyl.
- Use care during installation, take down and transporting. Frictional heat, particularly at the folds, can damage the surface. Sufficient frictional heat can create holes.
- Avoid excessive wind whip or flapping. Normally fastened sections or panels should be rolled or restrained when not in use.

Clear Vinyl

We recommend using protective Polish every 1 to 2 months. In the interim, use a Protective Cleaner frequently.

Note: All new vinyl can easily get impressions in itself. We recommend new enclosures be left in place to the extent possible. If completely removed, enclosures must be interleaved with either acid-free paper (available from framing shops) or old sheets (the best choice) to prevent “pooling” in the glass, vinyl “seasons” over time and becomes less impressionable. Roll all curtains down and fasten in place nightly to keep perfect appearance.

Cleaning: Flush thoroughly to cool the surface and rinse away environmental abrasives. Wash with a Soap Concentrate, or other equally gentle and high quality soap. Do not use Simple Green, Orpine or any other harsh cleaner – no detergents – they will dull the surface. Apply the soapy water to the clear vinyl section of the curtain with special purpose washing mitt or soft cotton cloths. Thoroughly rinse the soapy solution with fresh water and completely dry the curtains with a high quality chamois. (Swobbit.com makes several tools to make these tasks easier.) After washing the curtains, apply a Protective Polish sparingly with small, light circular motions using a soft cotton cloth. Allow the polish to dry and then remove with a clean soft cotton cloth. Finally, lightly buff to a sparkling shine. Done. For routine maintenance between polishing, use a Protective Cleaner. Insure the clear vinyl panels are free of abrasives. Very lightly mist a soft cotton cloth. Lightly and briskly rub a manageable sized area and then lightly buff dry with another clean cloth. Done. We recommend using a mild Cleaner at least weekly but it's so fast and easy you may want to do it daily. You'll love the shine.



Components & Electronics

*Alutech United Inc. carries a **5-year warranty** on all internal and electronic components included within any of our proprietary shutter and shade systems. These systems include Magnum, Barracuda, Zip Tex and any other Alu Star shutters. Excluded from this standard warranty period are any non-proprietary products sold through Alutech United Inc. These products' components, excluding electronics, which are still covered by the standard warranty, will be covered by a **3- year warranty** period.*

Paint Finish

*Alutech United Inc. carries a **5-year warranty** on all stocking paint choices. Excluded from this standard warranty are custom colored paint choices and installations located within 2640 feet of the seaside. Those painted finishes will be covered with a **3-year warranty** period.*

Fabric

*Alutech United Inc. carries a **3-year warranty** on all fabrics purchased in our fabric systems becoming unserviceable due to color or strength loss from normal usage and exposure conditions, including sunlight, mildew and atmospheric chemicals. Operating our fabric screens in less than ideal conditions, including temperatures **below 40 degrees**, wind speeds **above 18 miles per hour**, or any non-hurricane rated system **deployed in winds above 30mph** voids this warranty.*

Installation

*Alutech United Inc. **only** carries a **1-year warranty** for products installed and or contracted through us directly. All other installations conducted through dealers or contractors are excluded from this warranty period.*

General Info

Alutech is not liable for any injury, loss or damage, whether direct and/or unintended, arising out of the improper use of, or the inability to operate products made by Alutech. This warranty also does not cover loss or damage resulting from the improper assembly, improper installation, lack of care and/or damage sustained by a natural disaster or any other Acts of God.

The articles replaced according to the terms of this warranty shall be retained by Alutech United Inc. It is the customer's responsibility to handle any freight cost associated with the repair or replacement. All cost related to the installation of the affected Alutech United Inc. product covered by this replacement warranty will not be the responsibility of Alutech United Inc. The preceding warranty is exclusive and instead of all other warranties of quality, whether written, oral, or implied.

OTHER GREAT PRODUCTS WE OFFER

ROLL SHUTTERS

Hurricane rated
Several slat choices
7 colors
Small header box



ACCORDIONS

Hurricane rated
Locking options
Any large opening



SECURITY GRILLES

7 colors
Aluminum construction
Motor operated
Commercial locks

