



AVK SUPA® NON-TENSILE FLANGE ADAPTOR, PN16

603/A-002

GEOMET® zinc coated grade 8.8 bolts/nuts, WRAS approved EPDM sealings

AVK Supa® is a range of universal straight couplings, step couplings and flange adaptors for cast iron, ductile iron, steel, uPVC and asbestos cement pipes. Supa® couplings are easy to mount due to the GEOMET® anti-friction zinc-aluminium coated bolts and nuts and the ability to deflect up to 4° in all directions. The coated fasteners and the high quality epoxy coating make sure to offer a highly durable corrosion protection.

Product description:

Non tensile flange adaptor for drinking water and neutral liquids, including sewage and waste water free of hydrocarbons, to max 70°C

Design standards:

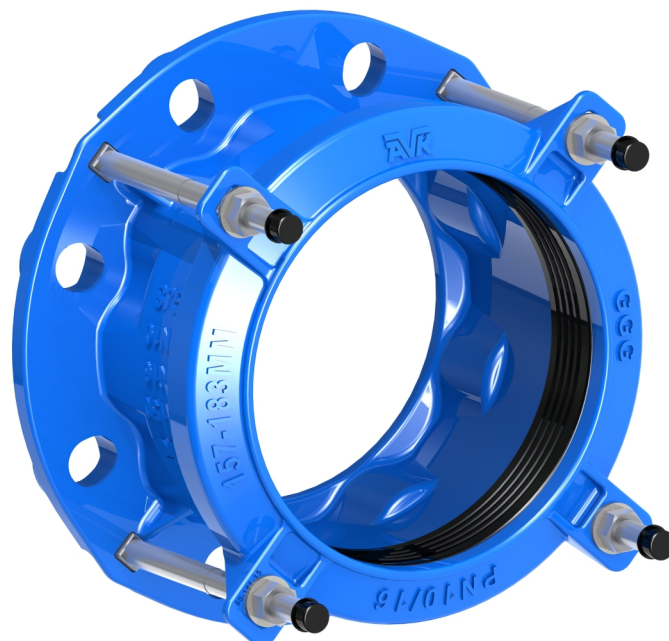
- Flange drilling to EN1092, PN16
- EN 14525 as reference

Test/Approvals:

- WRAS approved materials

Features:

- GEOMET® anti-friction, anti-corrosion zinc/aluminium coating on bolts and nuts
- Light weight design
- Up to 4° angular deflection in all directions
- Drinking water approved EPDM gasket
- Bolt ends protected with plastic caps
- Moulded ribs in the gasket absorb all minor imperfections in the pipe
- The design allows for up to 26 mm variation in outer diameter to cover all pipe materials
- Epoxy coating according to DIN 3476 and GSK



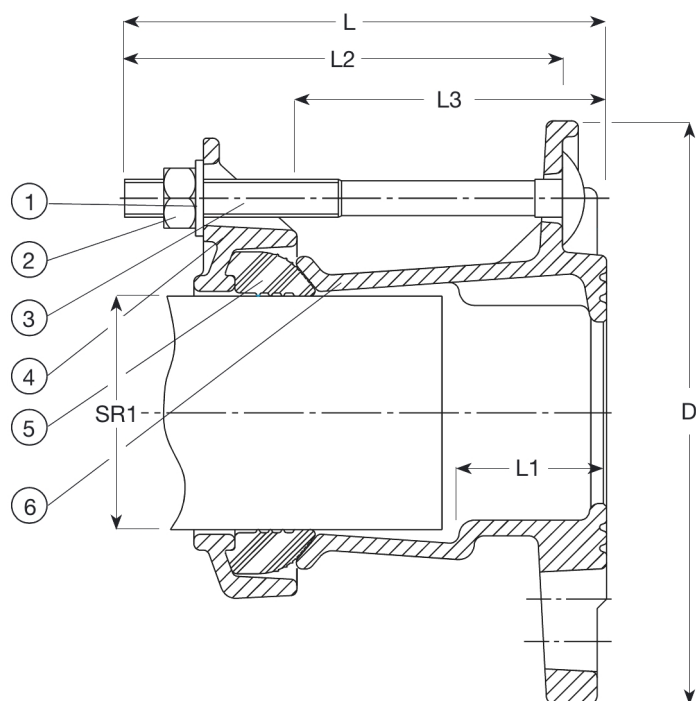
Expect ... **AVR**

The designs, materials and specifications shown are subject to change without notice due to the continuous development of our product range.

AVK SUPA® NON-TENSILE FLANGE ADAPTOR, PN16

603/A-002

GEOMET® zinc coated grade 8.8 bolts/nuts, WRAS approved EPDM sealings



Flange DN	Drilling
40/50 - 80	ISO 7005-2, ANSI B16 CL 125, BS 10 Table A, D and E
80/100 - 125/150	ISO 7005-2, ANSI B16 CL 125, BS 10 Table A, D, E, F and H
150 - 200	ISO 7005-2, ANSI B16 CL 125 and BS 10 Table E
250	ISO 7005-2 and ANSI B16 CL 125
300	ISO 7005-2, ANSI B16 CL 125 and BS 10 Table E
350	ISO 7005-2 and BS 10 Table A
400	ISO 7005-2 and ANSI B16 CL 125

Component list:

1. End cap	Plastic	5. Bracket	Ductile iron GJS-450-10
2. Washer	Steel, hot dip galvanized	6. Gasket	EPDM rubber
3. Nut	Steel gr. 8, zinc plated	7. Adaptor flange	Ductile Iron
4. Bolt	Steel gr. 8.8, zinc plated		

Components may be substituted with equivalent or higher class materials without prior notification.

Reference nos. and dimensions:

AVK ref. no.	DN mm	D mm	L mm	L1 mm	L2 mm	L3 mm	Seal range mm	Theoretical weight/kg
603-063-000-4200	40/50	165	159	47	145	95	46-63	4.0
603-074-000-4200	50	172	159	47	145	98	57-74	3.9
603-085-000-4200	50/65	185	159	47	145	98	68-85	4.2
603-106-000-4200	80	200	159	47	145	100	84-106	5.0
603-119-000-4200	100	254	159	47	145	100	99-119	5.6
603-133-000-4200	100	240	159	47	145	101	109-133	5.8
603-157-000-4200	125/150	285	184	58	170	111	132-157	9.0
603-183-000-4200	150	293	184	56	170	109	157-183	9.3
603-201-000-4200	150	313	184	69	170	112	176-201	11
603-215-000-4200	200	343	182	110	170	117	193-215	12
603-242-000-4200	200	353	182	65	170	117	218-242	13
603-268-000-4200	250	406	182	110	170	119	242-268	17
603-292-000-4200	250	406	182	61	170	119	266-292	19
603-306-000-4200	250	420	182	61	170	119	280-306	19
603-327-000-4200	300	483	186	59	170	119	301-327	22
603-350-000-4200	300	483	186	59	170	119	324-350	24
603-378-000-4200	350	520	186	110	170	119	352-378	25
603-396-000-4200	350	496	226	100	210	161	372-396	30
603-410-000-4200	350	520	226	100	210	161	384-410	30
603-436-000-4200	400	597	226	100	210	165	410-436	35
603-462-000-4200	400	597	226	100	210	165	436-462	38

The designs, materials and specifications shown are subject to change without notice due to the continuous development of our product range.

AVK SUPA® NON-TENSILE FLANGE ADAPTOR, PN16**603/A-002****GEOMET® zinc coated grade 8.8 bolts/nuts, WRAS approved EPDM sealings****Reference nos. and dimensions:**

AVK ref. no.	DN	D	L	L1	L2	L3	Seal range	Theoretical weight/kg
	mm	mm	mm	mm	mm	mm	mm	