

HANSEN[™]

THREADED PIPE FITTINGS



THE NO RISK NON-METALLIC FITTINGS



HANSEN™

THREADED PIPE FITTINGS

HANSEN™ THREADED PIPE FITTINGS

The high demand for non-metallic threaded fittings (tapered thread) grew this range to over 200.

All of our Threaded Pipe Fittings carry world wide approval for potable (drinkable) water. For more information on these and other approvals see the reverse of this brochure.

SHN Hex Nipple

Size mm:
6
8
10
15
20
25
32
40
50
65
80
100



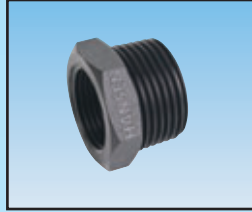
SRHN Reducing Hex Nipple

Size mm:
8 x 6 40 x 32
10 x 6 50 x 20
10 x 8 50 x 25
15 x 6 50 x 32
15 x 8 50 x 40
15 x 10 65 x 32
20 x 10 65 x 40
20 x 15 65 x 50
25 x 15 80 x 40
25 x 20 80 x 50
32 x 20 80 x 65
32 x 25 100 x 50
40 x 20 100 x 65
40 x 25 100 x 80



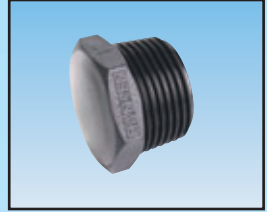
SRB Reducing Bush

Size mm:
40 x 25
15 x 6 40 x 32
15 x 8 50 x 15
15 x 10 50 x 20
20 x 8 50 x 25
20 x 10 50 x 32
20 x 15 50 x 40
25 x 8 65 x 32
25 x 10 65 x 40
25 x 15 65 x 50
25 x 20 80 x 40
32 x 15 80 x 50
32 x 20 80 x 65
32 x 25 100 x 50
40 x 15 100 x 65
40 x 20 100 x 80



SP Plug

Size mm:
6
8
10
15
20
25
32
40
50
65
80
100



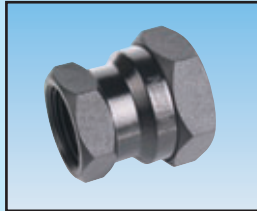
SS Socket

Size mm:
15
20
25
32
40
50
65
80
100



SRS Reducing Socket

Size mm:
20 x 15 50 x 25
25 x 15 50 x 32
25 x 20 50 x 40
32 x 20 65 x 40
32 x 25 65 x 50
40 x 20 80 x 50
40 x 25 80 x 65
40 x 32 100 x 65
50 x 20 100 x 80



SE Female Elbow

Size mm:
15
20
25
32
40
50
65
80
100



SMFE Male-Female Elbow

Size mm:
15
20
25
32
40
50



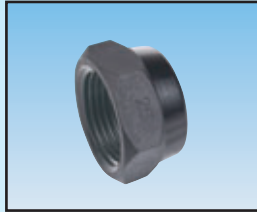
ST Female Tee

Size mm:
15
20
25
32
40
50
65
80
100



SC Cap

Size mm:
15
20
25
32
40
50
65
80
100



SMHT Male Hose Tail

Size mm:
6
8
10
15
20
25
32
40
50



SRMHT Reducing Male Hose Tail

Size mm:
8 x 6
8 x 10
10 x 6
10 x 8



SNT Nut and Hose Tail

Size mm:
15
20
20 x 15
25
25 x 15
25 x 20
32
40
50



STF(W) Tank Fitting White STF(B) Tank Fitting Black

Size mm:
15
20
25
32
40
50



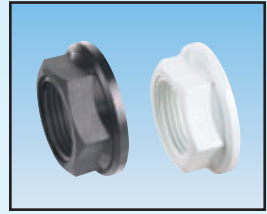
SFTFT Female Tank Fitting

Size mm:
15
20
25
32
40
50
80
100



SBN(W) Back Nut (White) SBN(B) Back Nut (Black)

Size mm:
15
20
25
32
40
50



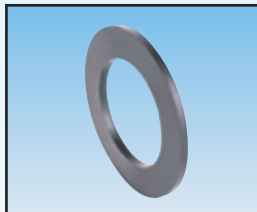
SBNL Large Back Nut

Size mm:
15
20
25
32
40
50



SW(B) Male Tank Fitting Washer

Size mm:
15
20
25
32
40
50



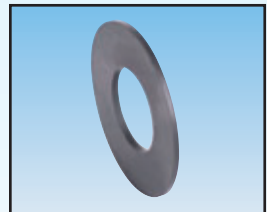
SW(P) Low Density Poly Washer

Size mm:
15
20
25
32
40
50



SWL Female Tank Fitting Washer

Size mm:
15
20
25
32
40
50



LARGE TANK FITTING

LEFT HAND THREAD

For Ease of Installation

PERFECT SEAL

Rubber Washer for a Perfect Seal



TAPERED THREAD

Precision Heavy Duty Tapered Thread for a Strong Reliable Seal

EASILY TIGHTENED

Low friction Washer to Allow the Nut to be Tightened Easily

THREADED PIPE FITTINGS TECHNICAL INFORMATION

Features & Benefits

- Choose from the Largest Range of Durable, High Strength, Commercial Quality Threaded Pipe Fittings in the Southern Hemisphere.
- Manufactured from High Quality Glass Fibre Reinforced Nylon giving a weather, termite, fungi and bacteria resistance, for longer life, cost effective, low maintenance fittings.
- An extensive range of fittings in sizes 6mm to 100mm (1/8" to 4").
- Precision Heavy Duty Tapered Threads give a Strong Reliable Seal.
- Materials strong enough to minimise potential cross threading.
- Fittings provide flexibility and versatility for new and existing installations, saving on time and money.

Specifications

- Maximum Working Pressure for fitting:
6mm to 50mm; 16 Bar (1600 kPa. 235 PSI) @ 20°C.
65mm fittings; 12 Bar (1200 kPa. 175 PSI) @ 20°C.
80mm and 100mm fittings; 10 Bar (1000 kPa. 145 PSI) @ 20°C. (excludes SFTFT 80mm & 100mm)
- SW(B) & SWL washer material; Thermoplastic Rubber.
- SW(P) washer material; Low Density Polyethylene.
- STF(B) & STF(W) Male Tank Fitting; Thread BSPF (parallel).
- SFTFT 15mm to 50mm Female Tank Fitting; External Thread BSPT (Tapered) on the end merging into a BSPF Parallel thread. Internal thread BSPT (Tapered).
- Fire Rating: UL94HB and UV Stabilised.
- Suitable for many types of fluid. Ask your dealer for details or contact Hansen Products for more information.
- All pipe work must be adequately supported.
- HANSEN™ Threaded Pipe Fittings 6mm to 100mm are M&I, MANARC, WRAS and AS/NZS 4020 approved. See back page for more information on these approvals.
- Hansen have tested all its products for use with cold water up to a maximum temperature of 60°C (140°F). We do not recommend the use of these products with temperatures higher than 60°C (140°F) as plastic expands due to temperature increases. Hansen can not guarantee the products will perform when used with temperatures over 60°C (140°F). Hansen products that have failed in temperatures higher than 60°C (140°F) will not be covered by warranty.

Installation

- It is recommended that either a thread sealing paste or thread sealing tape be used on all threaded connections. We recommend Loctite 5331.
- HANSEN™ Threaded Pipe Fittings can be used with metal fittings.

LARGE TANK FITTING TECHNICAL INFORMATION

Features & Benefits

- Manufactured from High Quality Glass Fibre Reinforced Nylon giving a weather, termite, fungi and bacteria resistance, for longer life, cost effective, low maintenance fittings.
- Precision Heavy Duty Tapered Threads give a Strong Reliable Seal.
- Materials strong enough to minimise potential cross threading.
- Fittings provide flexibility and versatility for new and existing installations, saving on time and money.

Specifications

- SFTFT 80mm and 100mm External Nut Thread Left Hand ISO Trapezoidal, External end thread and Internal thread BSPT (Tapered).
- Fire Rating: UL94HB and UV Stabilised.
- Suitable for many types of fluid. Ask your dealer for details or contact Hansen Products for more information.

Installation Tips

- To obtain proper washer compression for fitting installation ensure the face of the washers fully contacts the tank wall.
- Tighten the nut to ensure a water tight seal. Ensure that you comply with the tank manufacturers specifications.
- All pipe work must be adequately supported.
- It is recommended that either a thread sealing paste or thread sealing tape be used on all BSPT threaded connections.
- We recommend Loctite 5331.
- HANSEN™ Threaded Pipe Fittings can be used in conjunction with metal fittings.

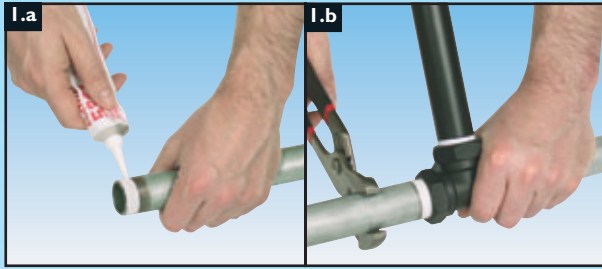
THREADED CONVERSIONS

Size Conversion Table	
6mm - 1/8"	32mm - 1 1/4"
8mm - 1/4"	40mm - 1 1/2"
10mm - 3/8"	50mm - 2"
15mm - 1/2"	65mm - 2 1/2"
20mm - 3/4"	80mm - 3"
25mm - 1"	100mm - 4"

Maximum Working Pressure @ 20°C		
Bar	kPa	PSI
10	1000	140
12	1200	175
16	1600	235

STEPS TO A QUICK & EASY INSTALLATION

THREADED FITTING INSTALLATION



1. (a) Use a threaded paste sealant or (b) a teflon tape sealant. The right sealant for threaded joints is non-hardening, compatible with plastic and doesn't add slipperiness to encourage over-torquing.

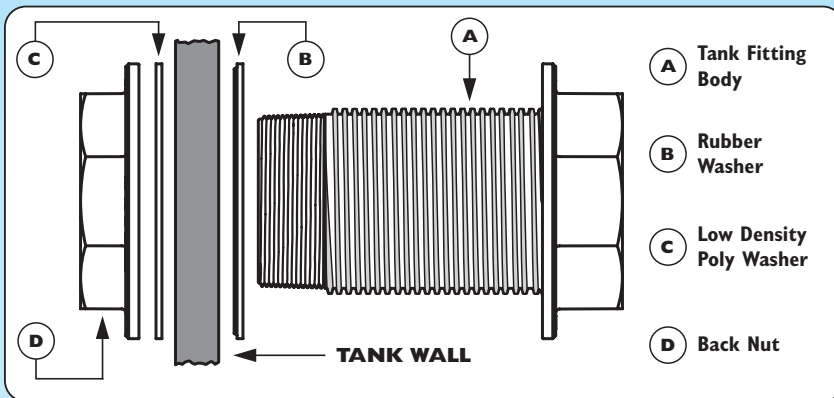


2. Screw pipe into fitting.



3. Do not over tighten. The right way to assemble a Threaded Pipe Fitting is finger tight plus one to two turns - no more!

LARGE TANK FITTING INSTALLATION



1. Check tank manufacturers specific tank fitting installation requirements.
2. Prior to installing fittings, check the sealing surface for debris and/or scratches which could cause leakage.
3. Remove the Back Nut (D) and Low Density Poly Washer (C) from the Tank Fitting Body (A)
4. Slide the Tank Fitting Body (A) through the hole in the tank. The Rubber Washer (B) must be between the fitting body flange and the tank wall (ensure ribs on the Rubber Washer (B) are sealing against tank wall). Fit Low Density Poly Washer (C) and then Back Nut (D) on the tank fitting body thread and tighten.

HANSEN HAS OBTAINED THE FOLLOWING APPROVALS



SGS M&I is the Marine and Industrial Division of SGS New Zealand Limited and forms part of the global SGS group, who are the world's largest independent Inspection, Testing and Certification body. The M&I division of SGS New Zealand Limited is the countries largest marine and industrial inspection, testing and Safe Ship Management service provider.

They offer Ships Surveys, SSM Systems Consultancy and Audit, Ships design Verification and Marine Product Certification for use on N.Z.'s commercial vessel fleet.

HANSEN™ Threaded Pipe Fittings in sizes 6mm to 100mm (1/8" to 4"), Polythene Pipe Fittings in sizes 15mm to 50mm (1/2" to 2") and all Foot & Check Valves have been SGS M&I approved.



WRAS formerly known to the industry as Wrc. HANSEN™ Threaded Pipe Fittings are approved for use with potable (drinkable) water and will not leach contaminants into the water.

The Water Research Council in the UK is the highest recognised water testing organisation in the world and we believe HANSEN™ are the only plastic threaded pipe fitting in Australasia to achieve this standard. HANSEN™ Threaded Pipe Fittings in sizes 6mm to 100mm (1/8" to 4") have been Wras approved. For more information on this approval please visit our website.



MANARC approval is the New Zealand Manukau City Council's system of maintaining the integrity of the public water supply, sewer, drainage and roading networks by allowing only the best products to be

used. MANARC approval is recognised by all local bodies throughout New Zealand. HANSEN™ Threaded Pipe Fittings 6mm to 50mm (1/8" to 2") have been through a rigorous testing process across the range to achieve this approval. For more information on the MANARC approval please visit our website.

AS/NZS 4020

AS/NZS 4020:2002 - Testing of products for use in contact with drinking water.

- Determines the methods used and the measure of compliance for the effects of a product on the taste and appearance of water.
- Determines the ability of a product to support the growth of micro-organisms and the quantity of toxic metallic and non metallic substances leached from the product when exposed to the test water.

HANSEN™ Threaded Pipe Fittings & Polythene Pipe Fittings meet the above standard as tested by an independent testing authority, the Australian Water Quality Centre.

HANSEN™ Threaded Pipe Fittings in sizes 6mm to 100mm (1/8" to 4") & Polythene Pipe Fittings in sizes 15mm to 50mm (1/2" to 2") have been AS/NZS 4020 approved.



Quality Endorsed Company
ISO 9001
QEC 3776

Hansen Products (NZ) Limited are justifiably proud to be certified to the new ISO 9001 : 2000 standard. Quality Management Systems – Requirements. The old versions were based on service standards whilst the latest is a focus on process. The object of a quality management system is to increase the efficiency and effectiveness of any organisation to eliminate risk to the customer.

We are certified for the design, manufacture, assembly, packaging, distribution and marketing of our products.

FOR TECHNICAL INFORMATION:

- WEBSITE: www.hansenproducts.com
- EMAIL: info@hansenproducts.com



HANSEN PRODUCTS (NZ) LIMITED
P.O. BOX 809, WHANGAREI, NEW ZEALAND.
PHONE: 64-9-430 4140 FAX: 64-9 430 4141
EMAIL: info@hansenproducts.com
WEBSITE: www.hansenproducts.com

Your Local Dealer:

THE HANSEN GUARANTEE: Hansen Products (NZ) Limited UNQUESTIONABLY GUARANTEE to replace any HANSEN™ product which has failed due to a manufacturing fault, and has been installed in the original condition as supplied by Hansen Products (NZ) Limited. We do not accept any liability whatsoever for any consequential damage or for any associated costs involved in repairing or replacing HANSEN™ products. This guarantee does not cover labour, travelling or freight expenses incurred in undertaking a replacement. Any replacement must be made through an authorised HANSEN™ stockist.

HANSEN™ is the internationally registered trademark belonging to HANSEN PRODUCTS (NZ) LIMITED. With our policy of continuing product design and development, specifications, code numbers and items are subject to change without notice. The information given on this brochure is for guidance only. HANSEN PRODUCTS (NZ) LIMITED accepts no responsibility for the misuse or misapplication of this information. Notice: Products in this brochure are protected by intellectual property rights owned by the Hansen Group of Companies in New Zealand, Australia and other countries.