



MOVING WATER FORWARD, SINCE 1968

2024 PRICE CATALOG

60HZ RETAIL

kascomarine.com

Fountains | Lighting | Surface Aeration | Diffused Aeration | Circulation | Pond Probiotics | De-icers | Mixers | Agitation



*Left & Cover: 2HP J Series Fountain
with New Fern Premium Nozzle*

MOVING WATER FORWARD

At Kasco, we help people realize the full potential of the water in their world. Our products are the most efficient and effective solutions for improving, protecting, and beautifying water.

OUR PEOPLE MAKE KASCO THE BEST IN THE BUSINESS

Superior customer service is in our DNA. From design and development to delivery and support, we provide an unwavering commitment to our customers.



FROM THE FACTORY

Here at Kasco's home facility in Wisconsin, things are feeling "normal" for the first time since 2019. Supply chains are relatively stable, and our warehouse is stocked with raw materials to build the equipment our customers rely on to move their water forward. This stability allows our team to get back to what they do best: seeking opportunities to better meet the needs of our end users and distribution partners.

After two years of focusing on sourcing and qualification of raw materials, our engineering team has turned their attention back to driving improvements in our products. This means ongoing quality improvements to existing products and renewed focus on new product development. These are the things that make our growing team of engineers most happy and bring the most value to users and servicers of our equipment.

After a full year of production in the newly expanded factory, our operations team is working on the next round of improvements. 2023 marked a return to the fast fulfillment and ship times you have come to expect from Kasco, and we look to get even better in 2024.

Our marketing team continues to develop new tools, captivating imagery, and educational content to support our distributors and product owners.

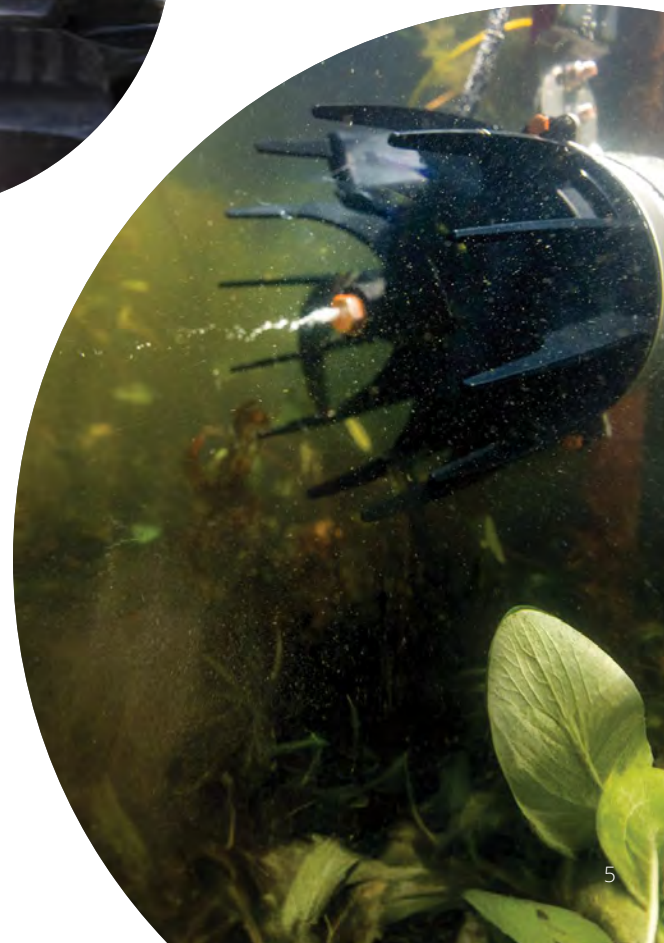


The sales team has eagerly returned to their full schedule of industry conferences, conventions, and customer visits. We have grown our sales and customer service teams so we can continue providing the best support in the industry. If you have questions about our products or a challenging application, please contact us! Our knowledgeable team has a wide range of experiences in lakes, ponds, marinas, and beyond.

As customers continue to face economic pressure from inflation, we will continue to find ways to provide more value for each hard-earned dollar they spend. From breakthrough product innovations to our industry-leading ship times and unparalleled customer support, we work every day to make it easy for you to choose Kasco.

Thank you for making us your partner in Moving Water Forward!

Sincerely,
Your Partners at Kasco



“

As always, the staff at Kasco has been great to work with – from order placement to repairs, they have the answers you’re looking for with quick turnaround to boot! Keep up the good work.”

MIKE



*Left - 3/4HP VFX Fountain
Right - 3/4HP J Series Fountain with Linden Pattern*



TABLE OF CONTENTS

Moving Water Forward	2
Why Kasco	3
A Note From the Factory	4
Table of Contents	7
Fountains	
J Series	8
J Series Premium Nozzles	16
VFX Series	18
WaterGlow Lighting.....	22
Lighting Selection Guide	23
Composite LED.....	24
Stainless Steel LED	26
RGB LED	28
RGBW LED.....	30
AquatiClear™ Circulators	32
Surface Aerators	36
RobustAire™ Diffused Aeration Systems.....	42
Compressors	49
Pond Probiotics.....	50
Accessories.....	52
Unit Mounting Options	53
Control Panels.....	54
Extras.....	55
De-icers	56
Warranty	58
MAP, Product Return, Repair, & Shipping.....	59
Distributor Tools.....	59



*5HP J Series Fountain
with Linden Pattern*

J SERIES

Elegant Fountain Displays

Kasco J Series Fountains offer dramatic, aesthetically pleasing displays at the best value on the market. Designed with both beauty and function in mind, each package includes multiple twist-and-lock nozzles at no extra charge, allowing you to choose patterns ranging from attention-demanding geysers to elegant 3-tier displays.



Packages include motor unit, 1-piece float, bottom screen, mooring ropes, power cord, display nozzles, and control panel with human-rated GFCI protection.

Available in 3/4 - 7.5HP sizes and single and three phase options to fit virtually any application.

Complete packages are ETL Listed to UL and CSA standards for safety.



5HP J Series Fountain
with Birch Pattern

5 Display
Patterns

A white line-art icon of a fountain with two jets of water rising from a circular base, set against a teal circular background.

Impressive
Heights & Widths

A white line-art icon of a crosshair with four arrows pointing up, down, left, and right, set against a teal circular background.

Easily Change
Patterns

A white line-art icon showing two different fountain patterns: one with five circles and one with a cluster of dots, connected by a double-headed arrow, set against a teal circular background.

Snap-on
Lights Available

A white line-art icon of a hand with the index finger pointing to a lightbulb, set against a teal circular background.

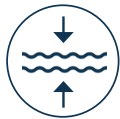
3/4HP & 1HP

J SERIES FOUNTAINS

- 120V and 208-240V, single phase options
- 1-piece float blends with water's surface and is easy to install
- Bottom screen helps prevent clogging
- Premium Nozzles available separately. See pages 16-17.
- Manage from shore with human-rated, GFCI-protected control panel



5 Patterns Available*



Shallow Operating Depths**



Lighting Packages Available



2-Year Warranty



ETL Listed to UL & CSA Standards

3/4HP Packages

CORD LENGTH	50 FT	100 FT	150 FT	200 FT	250 FT	300 FT	400 FT	500 FT
120V, SINGLE PHASE								
PART #	3400JF050	3400JF100	3400JF150	3400JF200	-	-	-	-
MSRP	\$1,996	\$2,178	\$2,745	\$2,999	-	-	-	-
208-240V, SINGLE PHASE								
PART #	3400HJF050	3400HJF100	3400HJF150	3400HJF200	3400HJF250	3400HJF300	3400HJF400	3400HJF500
MSRP	\$3,575	\$3,713	\$4,368	\$4,576	\$4,669	\$4,777	\$5,278	Inquire

1HP Packages

CORD LENGTH	50 FT	100 FT	150 FT	200 FT	250 FT	300 FT	400 FT	500 FT
120V, SINGLE PHASE								
PART #	4400JF050	4400JF100	4400JF150	4400JF200	-	-	-	-
MSRP	\$2,418	\$2,997	\$3,555	\$4,011	-	-	-	-
208-240V, SINGLE PHASE								
PART #	4400HJF050	4400HJF100	4400HJF150	4400HJF200	4400HJF250	4400HJF300	4400HJF400	4400HJF500
MSRP	\$4,135	\$4,278	\$4,998	\$5,226	\$5,456	\$5,569	\$5,688	Inquire

*Packages come with 4 twist-n-lock nozzles. To achieve the Willow pattern, operate fountain without nozzle.

**3/4HP units operate in as little as 17.5 in. of water. 1HP units operate in as little as 19 in. of water.

Product Notes:

1. Prices in bold have quick disconnect installed on power cords.
2. 3/4 and 1HP, 120V options include C-25 control panel.
3. 3/4 and 1HP, 208-240V options include C-85 control panel.
4. Solar-powered option available. Contact Kasco for details.





CYPRESS

3/4HP - 7 FT. H X 17 FT. W

1HP - 9 FT. H X 28 FT. W



LINDEN

3/4HP - 9 FT. H X 29 FT. W

1HP - 12 FT. H X 31 FT. W



WILLOW

3/4HP - 6.5 FT. H X 21 FT. W

1HP - 9 FT. H X 31 FT. W



SEQUOIA

3/4HP - 13 FT. H X 8 FT. W

1HP - 18 FT. H X 11 FT. W



BIRCH

3/4HP - 7 FT. H X 5 FT. W

1HP - 11 FT. H X 8 FT. W

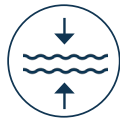
2HP & 3HP

J SERIES FOUNTAINS

- 208-240V, single and three phase options
- 1-piece float blends with water's surface and is easy to install
- Stainless steel hex bottom screen helps prevent clogging
- Premium Nozzles available separately. See pages 16-17.
- Manage from shore with human-rated, GFCI-protected control panel



5 Patterns Available*



Shallow Operating Depths**



Lighting Packages Available



3-Year Warranty - 2HP Units***
5-Year Warranty - 3HP Units



ETL Listed to UL & CSA Standards

2HP Packages

CORD LENGTH	50 FT	100 FT	150 FT	200 FT	250 FT	300 FT	400 FT	500 FT
208-240V, SINGLE PHASE								
PART #	8400JF050	8400JF100	8400JF150	8400JF200	8400JF250	8400JF300	8400JF400	8400JF500
MSRP	\$5,721	\$6,241	\$6,367	\$6,539	\$6,741	\$7,676	\$11,320	Inquire
208-240V, THREE PHASE								
PART #	2.3JF050	2.3JF100	2.3JF150	2.3JF200	2.3JF250	2.3JF300	2.3JF400	2.3JF500
MSRP	\$9,243	\$9,497	\$9,810	\$10,084	\$10,724	\$11,232	\$11,889	Inquire

3HP Packages

CORD LENGTH	50 FT	100 FT	150 FT	200 FT	250 FT	300 FT	400 FT	500 FT
208-240V, SINGLE PHASE								
PART #	3.1JF050	3.1JF100	3.1JF150	3.1JF200	3.1JF250	3.1JF300	3.1JF400	3.1JF500
MSRP	\$6,747	\$7,214	\$7,385	\$8,075	\$8,644	\$8,992	\$11,620	Inquire
208-240V, THREE PHASE								
PART #	3.3JF050	3.3JF100	3.3JF150	3.3JF200	3.3JF250	3.3JF300	3.3JF400	3.3JF500
MSRP	\$9,599	\$9,851	\$10,165	\$10,730	\$11,079	\$12,366	\$13,295	Inquire

*Packages include 5 twist-n-lock nozzles.

**2HP units operate in as little as 20 in. of water. 3HP units operate in as little as 24 in. of water.

***Extended warranty available on 2HP units.

Product Notes:

1. Prices in bold have quick disconnect installed on power cords.
2. 2HP, single phase options include C-85 control panel. 3HP, single phase options include C-95 control panel.
3. 2 and 3HP, three phase options include CF-3235 control panel.
4. 2 and 3HP, three phase units are constructed with durable stainless steel motor top and legs for reliable performance in all environments.
5. 460-480V, three phase options available for special order in approved locations only. Contact Kasco for details.
6. Solar-powered option available for 2HP, three phase units. Contact Kasco for details.





BALSAM

2HP - 14 FT. H X 32 FT. W

3HP - 19 FT. H X 34 FT. W



LINDEN

2HP - 15.5 FT. H X 38 FT. W

3HP - 20.5 FT. H X 38 FT. W



BIRCH

2HP - 11 FT. H X 10 FT. W

3HP - 16 FT. H X 12 FT. W



SPRUCE

2HP - 21 FT. H X 10 FT. W

3HP - 26 FT. H X 12 FT. W



REDWOOD

2HP - 22 FT. H X 6 FT. W

3HP - 27 FT. H X 6 FT. W

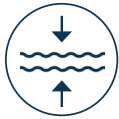
5HP & 7.5HP

J SERIES FOUNTAINS

- 208-240V, 5HP available as single and three phase
- 208-240V, 7.5HP available only as three phase
- 1-piece float blends with water's surface and is easy to install
- Stainless steel hex bottom screen helps prevent clogging
- Premium Nozzles available separately. See pages 16-17.
- Manage from shore with human-rated, GFCI-protected control panel



5 Patterns Available*



Shallow Operating Depths**



Lighting Packages Available



5-Year Warranty



ETL Listed to UL & CSA Standards

5HP Packages

CORD LENGTH	100 FT	150 FT	200 FT	250 FT	300 FT	400 FT	500 FT
208-240V, SINGLE PHASE							
PART #	5.1JF100	5.1JF150	5.1JF200	5.1JF250	5.1JF300	5.1JF400	5.1JF500
MSRP	\$8,441	\$9,429	\$10,164	\$11,540	\$13,783	\$14,911	Inquire
208-240V, THREE PHASE							
PART #	5.3JF100	5.3JF150	5.3JF200	5.3JF250	5.3JF300	5.3JF400	5.3JF500
MSRP	\$10,668	\$11,338	\$12,120	\$12,546	\$15,541	\$16,695	Inquire

7.5HP Packages

CORD LENGTH	100 FT	150 FT	200 FT	250 FT	300 FT	400 FT	500 FT
208-240V, THREE PHASE							
PART #	7.3JF100	7.3JF150	7.3JF200	7.3JF250	7.3JF300	7.3JF400	7.3JF500
MSRP	\$10,941	\$11,850	\$12,430	\$14,328	\$15,404	\$18,081	Inquire

*Packages include 5 twist-n-lock nozzles.

**5HP units operate in as little as 26 in. of water. 7.5HP units operate in as little as 28 in. of water.

Product Notes:

1. Prices in bold have quick disconnect installed on power cords.
2. 5HP, single phase units include C-95 control panel. 5HP, three phase units include CF-3235 control panel.
3. 7.5HP, three phase units include CF-3075 control panel.
4. 5 and 7.5HP units are constructed with durable stainless steel motor top and legs for reliable performance in all environments.
5. 460-480V, three phase options available for special order in approved locations only. Contact Kasco for details.





BALSAM

5HP - 18 FT. H X 34 FT. W

7.5HP - 21 FT. H X 36 FT. W



LINDEN

5HP - 24.5 FT. H X 46 FT. W

7.5HP - 26 FT. H X 46 FT. W



BIRCH

5HP - 24 FT. H X 14 FT. W

7.5HP - 26 FT. H X 16 FT. W



SPRUCE

5HP - 31 FT. H X 12 FT. W

7.5HP - 34 FT. H X 12 FT. W



REDWOOD

5HP - 32 FT. H X 6 FT. W

7.5HP - 36 FT. H X 8 FT. W

PREMIUM NOZZLES

FOR J SERIES FOUNTAINS

Further define your J Series experience with a Premium Nozzle, available for all HP sizes. New this year is the Fern Nozzle which provides an expansive, two-dimensional display for narrow ponds. Purchased separately, Kasco Premium Nozzles provide crisp and distinct streams of water for dramatic and captivating displays.



NEW Fern Nozzle



Available for All J Series Fountains



4 Pattern Choices for 3/4 & 1HP Units



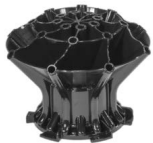
6 Pattern Choices for 2, 3, 5 & 7.5HP Units



Twist-and-lock Installation with Included Tool



Purchased Separately



Mighty Oak



Magnolia



Mahogany



Madrone



Palm



Fern - NEW!

PATTERN	3/4 & 1HP PART NUMBERS & DIMENSIONS (H x W) (FT)				2, 3, 5 & 7.5HP PART NUMBERS & DIMENSIONS (H x W) (FT)					
	PART #	3/4HP	1HP	MSRP	PART #	2HP	3HP	5HP	7.5HP	MSRP
Mighty Oak	431335K	10 x 24	13 X 34	\$150	841335K	14.5 x 40	19.5 x 51	24.5 x 58	26 x 60	\$295
Magnolia	431325K	9 x 29	11.5 x 37	\$150	841325K	13.5 x 44	18 x 60	23.5 x 72	26 x 80	\$295
Mahogany	431345K	11.5 x 28	14 x 34	\$150	841345K	16 x 40	21 x 58	28 x 64	29 x 72	\$295
Madrone	431330K	11.5 x 28	14 x 35	\$150	841330K	15 x 43	20 x 59	24 x 70	26 x 75	\$295
Palm	-	-	-	-	841320K	12 x 26	16 x 36	20.5 x 40	22 x 42	\$295
Fern - NEW!	-	-	-	-	841315K	12 x 36	16 x 54	20 x 70	24 x 66	\$295

Product Notes:

1. Fern nozzle does not require tool for installation. Simply twist and lock into place.



MIGHTY OAK



MAGNOLIA



MAHOGANY



MADRONE



PALM



FERN - NEW!

Best in Narrow Ponds



*1HP VFX Series
Fountain*

VFX SERIES

The Best of Beauty and Aeration

Kasco VFX Series is the choice for an elegant display with superior aeration benefits. These high-flow units are efficient, easy to install and operate, and ideal for many applications.



Packages include motor unit, float, bottom screen, mooring ropes, power cord, and control panel with human-rated GFCI protection.

Available in 1/2 - 5HP sizes and single and three phase options to fit virtually any application.

Complete packages are ETL Listed to UL and CSA standards for safety.



1HP VFX Series
Fountain

Classic "V"
Shaped Pattern



Combines
Beauty & Aeration



Snap-on
Lights Available



1-Piece Float
for Easy Assembly



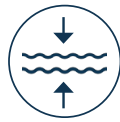
1/2HP, 3/4HP, & 1HP

VFX SERIES FOUNTAINS

- 120V and 208-240V, single phase options
- 1-piece float blends with water's surface and is easy to install
- Bottom screen helps prevent clogging
- Manage from shore with human-rated, GFCI-protected control panel



Classic "V"
Shaped Pattern



Shallow Operating
Depths*



Lighting Packages
Available



2-Year Warranty



ETL Listed to UL
& CSA Standards

HP	DISPLAY		CORD LENGTH	50 FT	100 FT	150 FT	200 FT	250 FT	300 FT	400 FT	500 FT
	H (FT)	W (FT)									
120V, SINGLE PHASE PACKAGES											
1/2	5	15	PART #	2400VFX050	2400VFX100	2400VFX150	2400VFX200	-	-	-	-
			MSRP	\$1,662	\$1,835	\$2,387	\$2,634	-	-	-	-
3/4	5.5	21	PART #	3400VFX050	3400VFX100	3400VFX150	3400VFX200	-	-	-	-
			MSRP	\$1,760	\$1,934	\$2,497	\$2,751	-	-	-	-
1	8	26	PART #	4400VFX050	4400VFX100	4400VFX150	4400VFX200	-	-	-	-
			MSRP	\$2,090	\$2,694	\$3,244	\$3,676	-	-	-	-
208-240V, SINGLE PHASE PACKAGES											
3/4	5.5	21	PART #	3400HVFX050	3400HVFX100	3400HVFX150	3400HVFX200	3400HVFX250	3400HVFX300	3400HVFX400	3400HVFX500
			MSRP	\$3,327	\$3,467	\$4,118	\$4,329	\$4,428	\$4,534	\$5,028	Inquire
1	8	26	PART #	4400HVFX050	4400HVFX100	4400HVFX150	4400HVFX200	4400HVFX250	4400HVFX300	4400HVFX400	4400HVFX500
			MSRP	\$3,726	\$3,858	\$4,553	\$4,777	\$5,006	\$5,122	\$5,670	Inquire

*1/2HP can operate in 15 in. of water. 3/4HP can operate in 17.5 in. of water. 1HP can operate in 19 in. of water.

Product Notes:

1. Prices in bold have quick disconnect installed on power cords.
2. 1/2, 3/4, and 1HP, 120V, single phase units include C-25 control panel.
3. 3/4 and 1HP, 208-240V, single phase units include C-85 control panel.
4. Solar-powered option available. Contact Kasco for details.



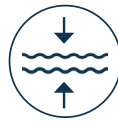
2HP & 5HP

VFX SERIES FOUNTAINS

- 208-240V, single and three phase options
- 1-piece float blends with water's surface and is easy to install
- Bottom screen helps prevent clogging
- Manage from shore with human-rated, GFCI-protected control panel



Classic "V"
Shaped Pattern



Shallow Operating
Depths*



Lighting Packages
Available



3-Year Warranty**



ETL Listed to UL
& CSA Standards

HP	DISPLAY		CORD LENGTH	50 FT	100 FT	150 FT	200 FT	250 FT	300 FT	400 FT	500 FT
	H (FT)	W (FT)									
208-240V, SINGLE PHASE PACKAGES											
2	8	32	PART #	8400VFX050	8400VFX100	8400VFX150	8400VFX200	8400VFX250	8400VFX300	8400VFX400	8400VFX500
			MSRP	\$5,798	\$6,308	\$6,472	\$6,645	\$6,853	\$7,974	\$11,573	Inquire
5	9	34	PART #	-	5.1VFX100	5.1VFX150	5.1VFX200	5.1VFX250	5.1VFX300	5.1VFX400	5.1VFX500
			MSRP	-	\$8,105	\$8,936	\$9,577	\$10,713	\$13,251	\$14,900	Inquire
208-240V, THREE PHASE PACKAGES											
2	8	32	PART #	2.3VFX050	2.3VFX100	2.3VFX150	2.3VFX200	2.3VFX250	2.3VFX300	2.3VFX400	2.3VFX500
			MSRP	\$9,016	\$9,212	\$9,581	\$9,773	\$10,392	\$10,903	\$11,828	Inquire
5	9	34	PART #	-	5.3VFX100	5.3VFX150	5.3VFX200	5.3VFX250	5.3VFX300	5.3VFX400	5.3VFX500
			MSRP	-	\$10,474	\$11,140	\$12,097	\$12,803	\$15,751	\$16,966	Inquire

*2HP can operate in 20 in. of water. 5HP can operate in 26 in. of water.

** Extended warranty available on 2HP and 5HP units.

Product Notes:

1. Prices in bold have quick disconnect installed on power cords.
2. 2HP, single phase units include C-85 control panel. 5HP, single phase units include C-95 control panel.
3. 2 and 5HP, three phase units include CF-3235 control panel.
4. Three phase units are constructed with a durable stainless steel motor top for reliable performance in all environments.
5. Mesh lining (included) around bottom screen further helps prevent clogging.
6. 460-480V, three phase option available for special order in approved locations only. Contact Kasco for details.
7. Solar-powered option available for 2HP, three phase units. Contact Kasco for details.



WATERGLOW LIGHTING

Add Beauty to Your Evening Displays

Kasco WaterGlow Lighting dramatically illuminates your fountain or surface aerator pattern during the evening hours. Available in composite or stainless steel housings and with several color options, these versatile LED lights are a perfect addition to your display.

All lighting fixtures feature a durable, high-strength housing for watertight operation.

Easy-to-install, snap-on light clips included with RGB LED, Composite LED, and Stainless Steel LED systems.

Multiple sizes and styles available to suit countless applications.

2HP J Series Fountain with Mahogany Premium Nozzle & Composite LED Light Kit



LIGHTING SELECTION GUIDE

Below are the lighting systems recommended for each unit size (HP). Background light, pattern, and fixture angle can affect visual experience. Using these recommendations will help ensure your pattern is richly illuminated to the fullest extent possible.



LIGHTING SYSTEM			RECOMMENDED UNIT SIZE (HP)						
LIGHT SYSTEM	MODEL	# OF FIXTURES	1/2	3/4	1	2	3	5	7.5
Composite LED	LED3C11	3	✓	✓	✓				
Composite LED	LED6C11	6				✓	✓	✓	
Stainless Steel LED	LED3S19	3				✓**	✓		
Stainless Steel LED	LED6S19	6					✓	✓	✓
RGB LED	RGB3C5	3	✓	✓	✓				
RGB LED	RGB6C5	6				✓	✓		
RGBW	RGBW2SW40 RGBW2SL40	2				✓**,**			
RGBW	RGBW3SW40 RGBW3SL40	3				✓**	✓	✓	✓
RGBW	RGBW4SW40 RGBW4SL40	4						✓*	✓

*RGBW 2 and 4 light kits are not compatible with 2 and 5HP Surface Aerators. Must use a RGBW 3 light kit.

**If adding any size Stainless Steel LED or RGBW kit to a 2HP Surface Aerator, the 3/5HP Surface Aerator float must be used. Please contact Kasco for ordering assistance.

Product Notes:

1. When adding a Composite LED, Stainless Steel LED, or RGB LED light kit to a 2, 3 or 5HP Surface Aerator, be sure to also order a 3-light kit adapter or 6-light kit adapter. See page 55 for part number and pricing.

COMPOSITE LED

WATERGLOW LIGHTING

These LED Lighting Systems provide classic elegance and include 4 colored lenses to create the perfect illuminated display.

- Includes light fixtures, brackets, snap-on clips, power cord, waterproof disconnect caps, colored lenses, and lens caps
- 3- and 6-fixture kits available in multiple power cord lengths
- Runs on 120Vac power



Displays White and Includes Red, Green, Blue, & Amber Lenses



Durable Composite Fixtures for Watertight Operation



11 Watts and 910 Lumens Per Fixture

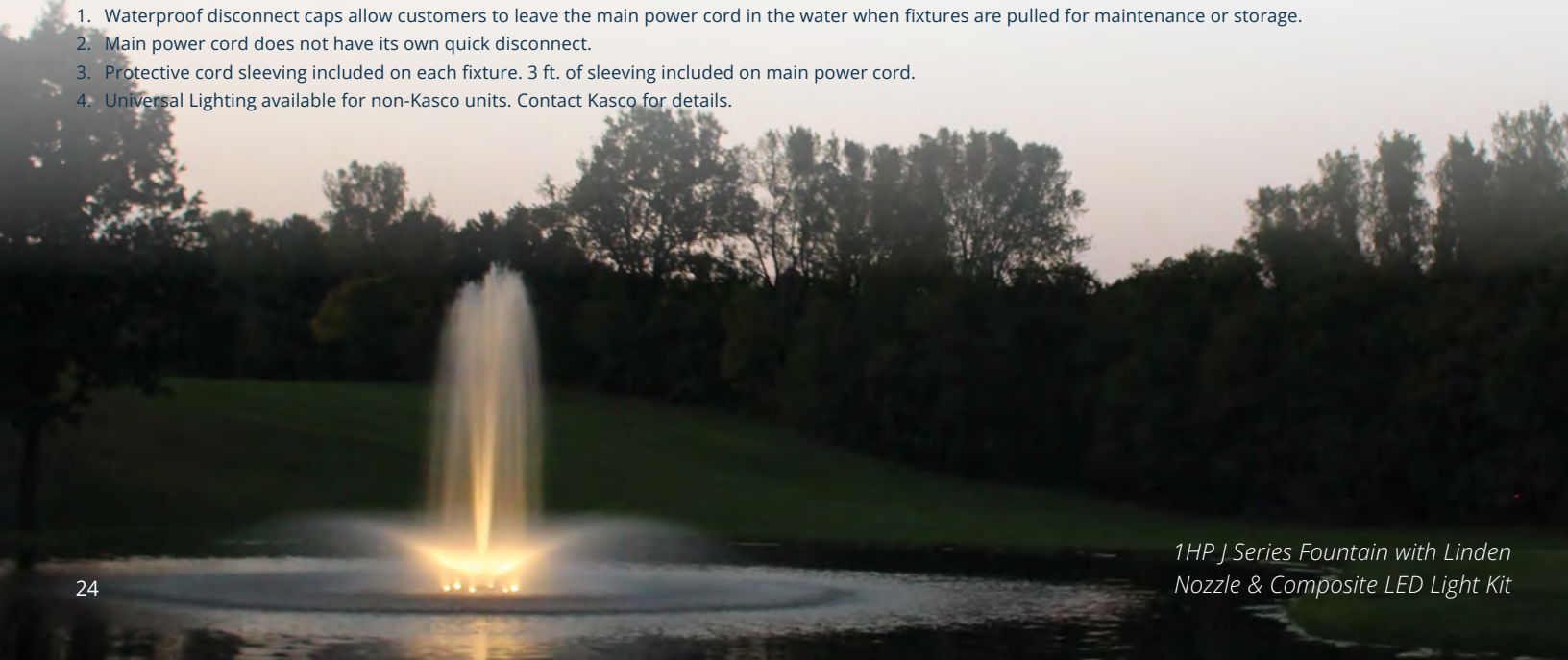


2-Year Warranty

CORD LENGTH	50 FT	100 FT	150 FT	200 FT	250 FT	300 FT	400 FT	500 FT
3-FIXTURE KITS (RECOMMENDED FOR 1/2 - 1HP UNITS)								
PART #	LED3C11-050	LED3C11-100	LED3C11-150	LED3C11-200	LED3C11-250	LED3C11-300	LED3C11-400	LED3C11-500
MSRP	\$877	\$968	\$1,050	\$1,142	\$1,264	\$1,344	\$1,478	\$2,027
6-FIXTURE KITS (RECOMMENDED FOR 2 - 5HP UNITS)								
PART #	LED6C11-050	LED6C11-100	LED6C11-150	LED6C11-200	LED6C11-250	LED6C11-300	LED6C11-400	LED6C11-500
MSRP	\$1,660	\$1,740	\$1,827	\$1,914	\$2,012	\$2,112	\$2,271	\$2,584

Product Notes:

1. Waterproof disconnect caps allow customers to leave the main power cord in the water when fixtures are pulled for maintenance or storage.
2. Main power cord does not have its own quick disconnect.
3. Protective cord sleeving included on each fixture. 3 ft. of sleeving included on main power cord.
4. Universal Lighting available for non-Kasco units. Contact Kasco for details.



1HP J Series Fountain with Linden Nozzle & Composite LED Light Kit



Snap-on Clips
for Easy
Installation



Vibrant Color
from All Angles



Great for
Fountains or
Surface Aerators



Power Cord
Lengths up to
500 ft.



STAINLESS STEEL LED

WATERGLOW LIGHTING

Kasco Stainless Steel Lighting Systems ensure a radiant display long into the evening hours and offer 4 colored lenses.

- Includes light fixtures, brackets, snap-on light clips, power cord with quick disconnect, colored lenses, and lens caps
- 3- and 6-fixture kits available in multiple power cord lengths
- Runs on 120Vac power



Displays White and Includes Red, Green, Blue, & Amber Lenses



Durable Stainless Steel Fixtures for Watertight Operation



19 Watts and 1,700 Lumens Per Fixture



3-Year Warranty

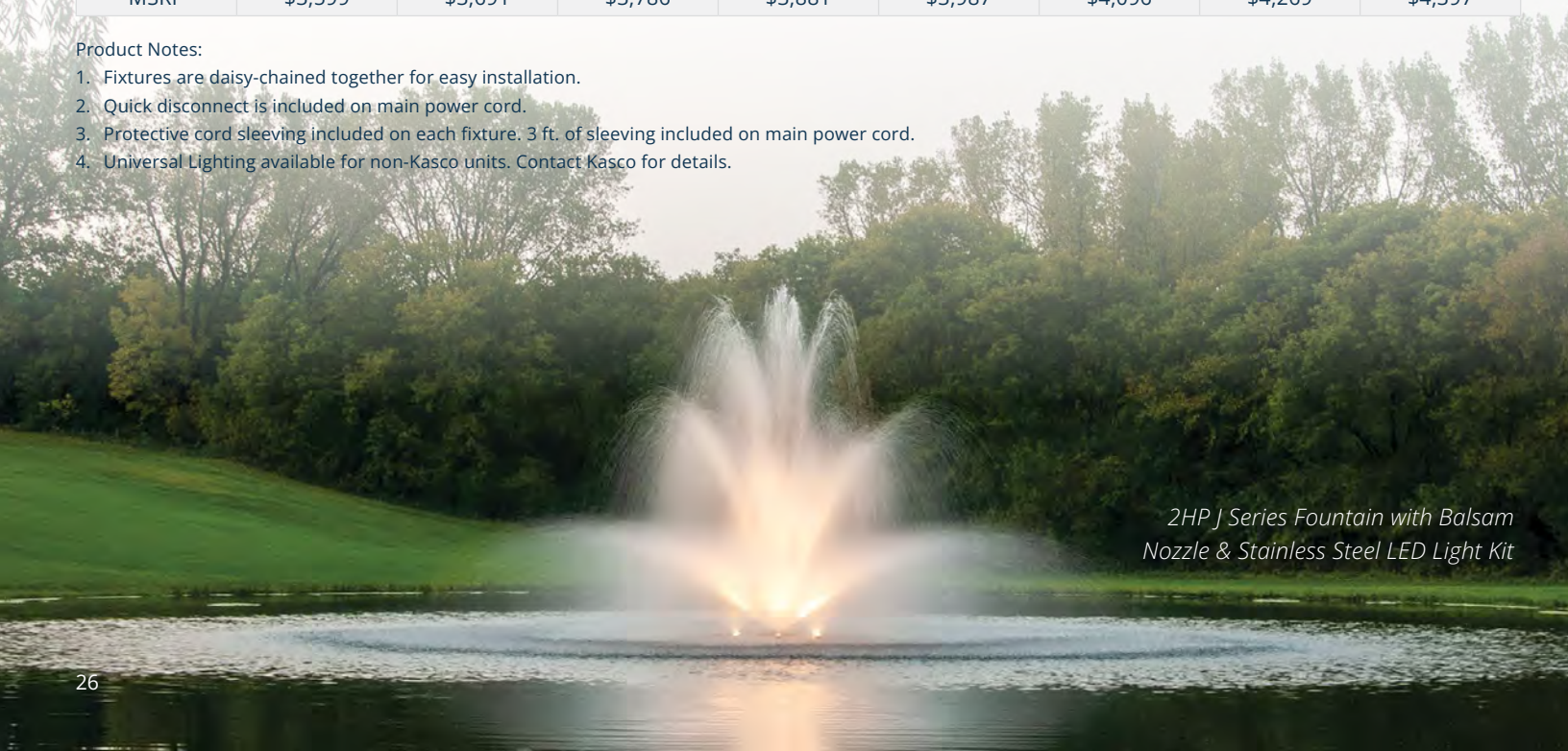


UL / CSA Listed

CORD LENGTH	50 FT	100 FT	150 FT	200 FT	250 FT	300 FT	400 FT	500 FT
3-FIXTURE KITS (RECOMMENDED FOR 2 - 5HP UNITS)								
PART #	LED3S19-050	LED3S19-100	LED3S19-150	LED3S19-200	LED3S19-250	LED3S19-300	LED3S19-400	LED3S19-500
MSRP	\$1,985	\$2,064	\$2,150	\$2,235	\$2,314	\$2,418	\$2,606	\$2,887
6-FIXTURE KITS (RECOMMENDED FOR 3 - 7.5HP UNITS)								
PART #	LED6S19-050	LED6S19-100	LED6S19-150	LED6S19-200	LED6S19-250	LED6S19-300	LED6S19-400	LED6S19-500
MSRP	\$3,599	\$3,691	\$3,786	\$3,881	\$3,987	\$4,096	\$4,269	\$4,397

Product Notes:

1. Fixtures are daisy-chained together for easy installation.
2. Quick disconnect is included on main power cord.
3. Protective cord sleeving included on each fixture. 3 ft. of sleeving included on main power cord.
4. Universal Lighting available for non-Kasco units. Contact Kasco for details.



2HP J Series Fountain with Balsam Nozzle & Stainless Steel LED Light Kit



Snap-on Clips
for Easy
Installation



Vibrant Color
from All Angles



Great for
Fountains or
Surface Aerators



Power Cord
Lengths up
to 500 ft.



*2HP J Series Fountain with Palm Premium
Nozzle & Stainless Steel LED Light Kit*

RGB LED

WATERGLOW LIGHTING

Kasco RGB Lighting Systems add vibrancy to evening water displays with exceptional colors, rhythmic patterns, and musical capabilities.

- Packages include light fixtures, brackets, snap-on clips, power cord, waterproof disconnect caps, remote control, and RGB control panel
- 3- and 6-fixture kits available in multiple power cord lengths
- Runs on 24Vdc power



9 Vibrant
Color Choices



Durable Composite Housings
for Watertight Operation



Power Cord Lengths
up to 400 ft.



5 Watts Per Fixture

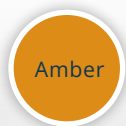


2-Year Warranty

CORD LENGTH	50 FT	100 FT	150 FT	200 FT	250 FT	300 FT	400 FT
3-FIXTURE KITS (RECOMMENDED FOR 1/2 - 1HP UNITS)							
PART #	RGB3C5-050	RGB3C5-100	RGB3C5-150	RGB3C5-200	RGB3C5-250	RGB3C5-300	RGB3C5-400
MSRP	\$1,419	\$1,621	\$1,823	\$2,021	\$2,238	\$2,888	\$3,747
6-FIXTURE KITS (RECOMMENDED FOR 2 & 3HP UNITS)							
PART #	RGB6C5-050	RGB6C5-100	RGB6C5-150	RGB6C5-200	RGB6C5-250	RGB6C5-300	RGB6C5-400
MSRP	\$2,431	\$2,855	\$3,279	\$3,704	\$4,142	\$5,547	\$6,953

Product Notes:

1. Waterproof disconnect caps allow customers to leave the main power cord in the water when fixtures are pulled for maintenance or storage.
2. Main power cord does not have its own quick disconnect.
3. Protective cord sleeving included on each fixture. 3 ft. of sleeving included on main power cord(s).
4. 6-fixture kits ship with 2 power cords, each with 3 fixtures.
5. Universal Lighting available for non-Kasco units. Contact Kasco for details.



1HP Surface Aerator
with RGB LED Light Kit



Snap-on Clips
for Easy
Installation



Vibrant Color
from All Angles



Great for
Fountains or
Surface Aerators



Set to Music
in Rhythmic
Patterns



1HP J Series Fountain with Mahogany Premium
Nozzle & RGB LED Light Kit

RGBW LED

WATERGLOW LIGHTING

Kasco's RGBW Lighting Systems operate over Wi-Fi connection or with a push-button controller, offer 36 pre-programmed settings, and are DMX-addressable for further customization. Independently adjustable fixtures allow for vibrant lighting in any setting.

- Includes fixtures, mounting brackets, power cord with quick disconnect, and control panel
- 2-, 3-, and 4-fixture kits available in multiple power cord lengths
- Runs on 120Vac power



Perfect for Fountains
or Surface Aerators



Durable Stainless Steel Fixtures
for Watertight Operation



40 Watts and 2,376
Lumens Per Fixture



5-Year Warranty



UL / CSA Listed

WI-FI ENABLED PACKAGES

Use the touch pad inside the panel or download the app on your mobile device to control color, sequencing patterns, and power.


PUSH-BUTTON PACKAGES

Use the push-button controller inside the panel or included short-range remote to cycle through color, sequencing patterns, and power.

CONTROL OPTION	MODEL	CORD LENGTH						
		100 FT	150 FT	200 FT	250 FT	300 FT	400 FT	500 FT
2-FIXTURE KITS (RECOMMENDED FOR 2HP UNITS)								
Wi-Fi	RGBW2SW40	\$5,890	\$6,096	\$6,273	\$6,469	\$6,676	\$7,058	\$7,451
Push-Button	RGBW2SL40							
3-FIXTURE KITS (RECOMMENDED FOR 2 - 7.5HP UNITS)								
Wi-Fi	RGBW3SW40	\$7,150	\$7,357	\$7,534	\$7,730	\$7,926	\$8,319	\$8,712
Push-Button	RGBW3SL40							
4-FIXTURE KITS (RECOMMENDED FOR 5 & 7.5HP UNITS)								
Wi-Fi	RGBW4SW40	\$8,503	\$8,709	\$8,886	\$9,083	\$9,279	\$10,523	\$11,130
Push-Button	RGBW4SL40							

Product Notes:

1. Part # is the model combined with cord length (ex. RGBW2SW40-100).
2. Fixtures are daisy-chained together for easy installation.
3. Quick disconnect is included on main power cord.
4. Protective cord sleeving included on each fixture. 3 ft. of sleeving included on main power cord.
5. Wireless remote in Push-Button Packages (SL models) includes batteries.
6. Wi-Fi models can operate long distances from power.




Each fixture uses 8 LED arrays producing 4 narrow and 4 wide beams of light to fully illuminate even the largest multi-tiered patterns.



Each fixture features 8 individual LED arrays

5HP J Series Fountain with Mahogany Premium Nozzle & RGBW LED Light Kit



3/4HP AquatiClear™
Circulator

AQUATICLEAR™

Clog-Resistant Waterfront Management

AquatiClear™ by Kasco is a clog-resistant circulator that keeps water near docks, canals, and shorelines free of floating debris and foul odors. Utilizing Clean Current Technology™ (patent pending), AquatiClear features a prop guard with smooth, rounded tines that allow debris to slip by instead of collect around the unit, meaning continuous operation and less maintenance.

Packages include motor unit and power cord. Mounting options and control panels available.

Crown-like prop guard with smooth, rounded tines decreases clogging from floating algae and debris.

Versatile mounting options allow AquatiClear to direct the flow of water to address specific areas.






BEFORE

Clears Shorelines
of Floating Debris



Debris Slips by
Instead of Clogging



Less Clogging
Reduces Maintenance



AFTER



Kasco AquatiClear
Circulators provide a
strong, directional flow of
water to clean and clear
waterfront property.

AQUATICLEAR™

CLOG-RESISTANT CIRCULATOR

- 120V and 208-240V, single phase options
- Unit only, Horizontal Float, and Universal Mount options available
- Universal Mounts include the Simple Swivel bracket.
- Shallow Water Install Kit available.
- Manage from shore with optional human-rated, GFCI-protected control panel. See page 54.



1/2, 3/4, & 1HP
Available



Crown-like Prop Guard
Decreases Clogging from Debris



2-Year Warranty



ETL Listed to UL
& CSA Standards

HP	VOLT (V)	MODEL	CORD LENGTH									
			25 FT	50 FT	75 FT	100 FT	150 FT	200 FT	250FT	300 FT	400 FT	500 FT
UNIT ONLY PACKAGES - "C" (NO MOUNT)												
1/2	120	2400C	\$1,045	\$1,083	-	\$1,259	\$1,821	\$2,072	-	-	-	-
3/4	120	3400C	\$1,132	\$1,175	-	\$1,336	\$1,950	\$2,180	-	-	-	-
3/4	208-240	3400HC	-	\$1,223	-	\$1,360	\$1,991	\$2,191	\$2,344	\$2,445	\$2,937	Inquire
1	120	4400C	-	\$1,359	\$1,471	\$1,900	\$2,514	\$2,957	-	-	-	-
1	208-240	4400HC	-	\$1,381	-	\$1,512	\$2,187	\$2,397	\$2,701	\$2,812	\$3,103	Inquire
HORIZONTAL FLOAT PACKAGES - "CFM"												
1/2	120	2400CFM	\$1,545	\$1,583	-	\$1,759	\$2,321	\$2,572	-	-	-	-
3/4	120	3400CFM	\$1,632	\$1,675	-	\$1,836	\$2,450	\$2,680	-	-	-	-
3/4	208-240	3400HCFM	-	\$1,723	-	\$1,860	\$2,491	\$2,691	\$2,844	\$2,945	\$3,437	Inquire
1	120	4400CFM	-	\$1,859	\$1,971	\$2,400	\$3,014	\$3,457	-	-	-	-
1	208-240	4400HCFM	-	\$1,881	-	\$2,012	\$2,687	\$2,897	\$3,201	\$3,312	\$3,603	Inquire
UNIVERSAL MOUNT PACKAGES - "CDM" (CUSTOMER MUST SUPPLY PIPE)												
1/2	120	2400CDM	\$1,417	\$1,455	-	\$1,631	\$2,193	\$2,444	-	-	-	-
3/4	120	3400CDM	\$1,504	\$1,547	-	\$1,708	\$2,322	\$2,552	-	-	-	-
3/4	208-240	3400HCDM	-	\$1,595	-	\$1,732	\$2,363	\$2,563	\$2,716	\$2,817	\$3,309	Inquire
1	120	4400CDM	-	\$1,731	\$1,843	\$2,272	\$2,886	\$3,329	-	-	-	-
1	208-240	4400HCDM	-	\$1,753	-	\$1,884	\$2,559	\$2,769	\$3,073	\$3,184	\$3,475	Inquire

Product Notes:

1. Prices in bold have quick disconnect installed on power cords.
2. Part # is the model combined with cord length (ex. 3400CDM150).
3. If AquatiClear is installed less than 1.5 ft. below the surface, a Shallow Water Install Kit is recommended. See page 35.
4. Solar-powered option available. Contact Kasco for details.

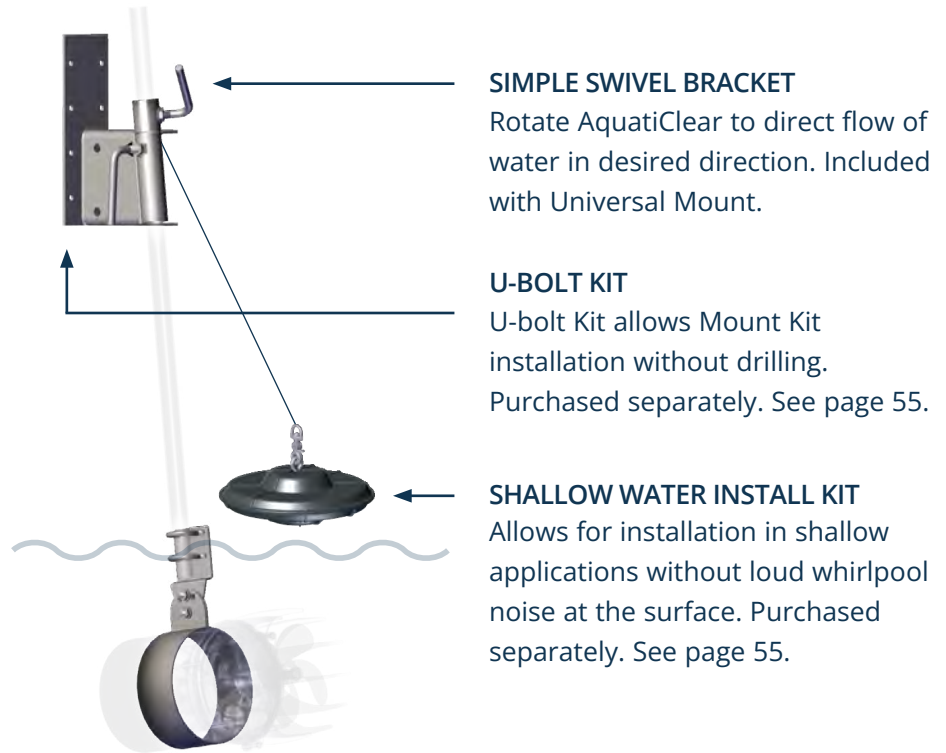


NEVER enter the water with
electrical equipment connected
and / or in operation.

AquatiClear Mounting Options

Universal Mount

Mount AquatiClear to a dock or similar structure and easily adjust its angle and depth. Adjust rotation with the Simple Swivel bracket (patent pending). Mount includes a lifetime warranty. Optional U-bolt Kit allows mount installation without drilling into structure.



Horizontal Float

Secure AquatiClear on the surface with three ropes and tie-down loops. Three angles of orientation moves water in desired direction. Float includes a 3-year warranty.



Kasco AquatiClear Circulators provide a strong, directional flow of water to clean and clear waterfront property.



1HP Surface Aerator

SURFACE AERATORS

High Oxygen Transfer at Extreme Value

Kasco Surface Aerators push high volumes of water into the air. This process increases the overall health of your water and keeps it thoroughly mixed. Introducing oxygen and water movement breaks up stratification, eliminates odor, discourages algae growth, and promotes a healthy aquatic environment.



Packages include motor unit, float, mooring ropes, and power cord. Control panels available.

Available in 1/2 - 5HP sizes and single or three phase options to fit a variety of applications.

Packages that include control panels are ETL Listed to UL and CSA standards.



1HP Surface Aerator

Great for
Backyard Ponds,
Fish Farms, and More



For Continuous or
Supplemental Use



Pair with
WaterGlow
Lighting Kit



Ideal in Depths
Less than 8 ft.



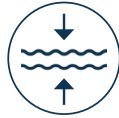
1/2HP, 3/4HP, & 1HP

SURFACE AERATOR

- 120V and 208 - 240V, single phase options
- 1-piece float blends with the water's surface and is easy to install
- Manage from shore with optional human-rated, GFCI-protected control panel. See page 54.



Lighting Packages Available



Shallow Operating Depths*



2-Year Warranty



ETL Listed to UL & CSA Standards

HP	MODEL	CORD LENGTH									
		25 FT	50 FT	75 FT	100 FT	150 FT	200 FT	250 FT	300 FT	400 FT	500 FT
120V, SINGLE PHASE PACKAGES											
1/2	2400A	\$946	\$988	-	\$1,161	\$1,725	\$1,977	-	-	-	-
	2400AF	-	\$1,239	-	\$1,414	\$1,971	\$2,221	-	-	-	-
	2400AF (BTM SCR)	-	\$1,481	-	\$1,656	\$2,213	\$2,463	-	-	-	-
3/4	3400A	\$1,008	\$1,051	-	\$1,209	\$1,811	\$2,036	-	-	-	-
	3400AF	-	\$1,325	-	\$1,492	\$2,076	\$2,333	-	-	-	-
	3400AF (BTM SCR)	-	\$1,567	-	\$1,734	\$2,318	\$2,575	-	-	-	-
1	4400A	\$1,118	\$1,206	\$1,314	\$1,726	\$2,366	\$2,744	-	-	-	-
	4400AF	-	\$1,620	\$1,730	\$2,178	\$2,790	\$3,218	-	-	-	-
	4400AF (BTM SCR)	-	\$1,862	\$1,972	\$2,420	\$3,032	\$3,460	-	-	-	-
208-240V, SINGLE PHASE PACKAGES											
3/4	3400HA	-	\$1,124	-	\$1,262	\$1,896	\$2,097	\$2,251	\$2,352	\$2,847	Inquire
	3400HAF	-	\$1,385	-	\$1,522	\$2,145	\$2,346	\$2,491	\$2,590	\$3,074	Inquire
	3400HAF (BTM SCR)	-	\$1,627	-	\$1,764	\$2,387	\$2,588	\$2,733	\$2,832	\$3,316	Inquire
1	4400HA	-	\$1,302	-	\$1,435	\$2,123	\$2,337	\$2,647	\$2,760	\$3,057	Inquire
	4400HAF	-	\$1,625	-	\$1,770	\$2,407	\$2,648	\$2,869	\$2,980	\$3,075	Inquire
	4400HAF (BTM SCR)	-	\$1,867	-	\$2,012	\$2,649	\$2,890	\$3,111	\$3,222	\$3,317	Inquire

*1/2HP can operate in 15 in. of water. 3/4HP can operate in 17.5 in. of water. 1HP can operate in 19 in. of water.

Product Notes:

1. Prices in bold have quick disconnect installed on power cords.
2. Part # is the model combined with cord length (ex. 2400AF050).
3. "A" models only include motor unit; "AF" models include unit and float; "BTM SCR" models include unit, float, and bottom screen.
4. Solar-powered option available. Contact Kasco for details.





*1HP Surface Aerator
with RGB LED Light Kit*



Kasco Surface Aerators deliver up to 3.0 lbs. of O₂ per horsepower, per hour of operation, making them the most dependable and efficient units on the market.

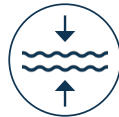
2HP, 3HP, & 5HP

SURFACE AERATOR

- 208 - 240V, single and three phase options
- Control panels are optional for single phase units and included for three phase units except “U” models.
- Control panels feature human-rated GFCI protection. See page 54.



Lighting Packages Available



Shallow Operating Depths*



3-Year Warranty**



ETL Listed to UL & CSA Standards

HP	MODEL	CORD LENGTH							
		50 FT	100 FT	150 FT	200 FT	250 FT	300 FT	400 FT	500 FT
208-240V, SINGLE PHASE PACKAGES									
2	8400A	\$2,204	\$2,760	\$2,970	\$3,171	\$3,405	\$4,513	\$8,545	Inquire
	8400AF	\$3,429	\$3,996	\$4,200	\$4,404	\$4,609	\$5,640	\$9,008	Inquire
	8400AF (BTM SCR)	\$3,671	\$4,238	\$4,442	\$4,646	\$4,851	\$5,882	\$9,250	Inquire
3	3.1A	\$2,980	\$3,275	\$3,688	\$4,542	\$4,875	\$5,196	\$8,938	Inquire
	3.1AF	\$4,317	\$4,795	\$4,963	\$5,597	\$5,842	\$6,240	\$9,903	Inquire
	3.1AF (BTM SCR)	\$4,559	\$5,037	\$5,205	\$5,839	\$6,084	\$6,482	\$10,145	Inquire
5	5.1A	-	\$4,468	\$5,254	\$5,888	\$7,223	\$9,741	\$12,613	Inquire
	5.1AF	-	\$5,688	\$6,524	\$7,161	\$8,447	\$10,702	\$12,969	Inquire
	5.1AF (BTM SCR)	-	\$5,930	\$6,766	\$7,403	\$8,689	\$10,944	\$13,211	Inquire
208-240V, THREE PHASE PACKAGES									
2	U2.3A	\$2,916	\$3,120	\$3,520	\$3,751	\$4,337	\$4,758	\$6,852	Inquire
	U2.3AF	\$4,225	\$4,419	\$4,808	\$5,033	\$5,618	\$6,012	\$8,003	Inquire
	U2.3AF (BTM SCR)	\$4,467	\$4,661	\$5,050	\$5,275	\$5,860	\$6,254	\$8,245	Inquire
3	U3.3A	\$3,556	\$3,778	\$4,185	\$4,660	\$4,853	\$6,312	\$7,663	Inquire
	U3.3AF	\$4,895	\$5,103	\$5,504	\$5,952	\$6,127	\$7,548	\$8,960	Inquire
	U3.3AF (BTM SCR)	\$5,137	\$5,345	\$5,746	\$6,194	\$6,369	\$7,790	\$9,202	Inquire
5	U5.3A	-	\$4,426	\$5,089	\$5,798	\$6,604	\$9,610	\$11,028	Inquire
	U5.3AF	-	\$5,823	\$6,476	\$7,235	\$7,971	\$10,834	\$11,965	Inquire
	U5.3AF (BTM SCR)	-	\$6,065	\$6,718	\$7,477	\$8,213	\$11,076	\$12,207	Inquire

*2HP can operate in 20 in. of water. 3HP can operate in 24 in. of water. 5HP can operate in 26 in. of water.

** Extended warranty available on 2HP and 5HP units.

Product Notes:

1. See notes on next page.



NEVER enter the water with electrical equipment connected and / or in operation.

HP	MODEL	CORD LENGTH							
		50 FT	100 FT	150 FT	200 FT	250 FT	300 FT	400 FT	500 FT
208-240V, THREE PHASE PACKAGES (INCLUDES CA-3235 CONTROL PANELS)									
2	2.3AF	\$7,288	\$7,482	\$7,871	\$8,094	\$8,680	\$9,075	\$11,065	Inquire
	2.3AF (BTM SCR)	\$7,530	\$7,724	\$8,113	\$8,336	\$8,922	\$9,317	\$11,307	Inquire
3	3.3AF	\$7,962	\$8,170	\$8,571	\$9,020	\$9,194	\$10,614	\$12,027	Inquire
	3.3AF (BTM SCR)	\$8,204	\$8,412	\$8,813	\$9,262	\$9,436	\$10,856	\$12,269	Inquire
5	5.3AF	-	\$8,972	\$9,624	\$10,384	\$11,121	\$13,882	\$15,115	Inquire
	5.3AF (BTM SCR)	-	\$9,214	\$9,866	\$10,626	\$11,363	\$14,124	\$15,357	Inquire

Product Notes:

1. Prices in bold have quick disconnect installed on power cords.
2. Part # is the model combined with cord length (ex. U2.3AF050).
3. "A" models only include motor unit; "AF" models include unit and float; "BTM SCR" models include unit, float, and bottom screen.
4. If adding a light kit to a three phase unit, an additional control panel is needed. Contact Kasco for details.
5. 2, 3, and 5HP, three phase units are constructed with a durable stainless steel motor top for reliable performance in all environments.
6. 460 - 480V, three phase option available for special order in approved locations only. Contact Kasco for details.
7. Solar-powered option available for 2HP, three phase units. Contact Kasco for details.

1HP Surface Aerator



Pair Kasco Surface Aerators with Pond Probiotics for maximized results. See page 50 for details.



Kasco

ROBUSTAIRE™ DIFFUSED AERATION

Move & Aerate Large Volumes of Water

Restore your water body's natural ecosystem by adding beneficial water mixing and movement with RobustAire™. A shore-mounted compressor pushes air through self-weighted lines to a dual-loop diffuser at the bottom of the pond, lake, or tank. This induces oxygen transfer and beneficial mixing to prevent weed overgrowth, algae, unpleasant odors, fish kills, and other issues.



Packages include diffuser assembly, compressor, and compressor mounting option. Some models include SureSink Tubing.

Large and Medium Cabinet Systems revolutionize air movement for superior cooling and less maintenance.

Dual-loop diffuser assembly will not clog, includes strain relief, and is self-weighted to land right-side up every time.

11-44% More
Efficient than
Competition
(3rd-party tested)



Cabinet Design
Ensures Quiet
Operation



LIFETIME
Warranty on
Diffuser



EASY COMPRESSOR MAINTENANCE

A visual maintenance indicator on the air filter turns red when cleaning is needed. Large air filters allow for easier, less frequent cleaning.

ROBUSTAIRE™

STANDARD & DOUBLE-PISTON (DP) SYSTEMS

- Includes 1 - 3 diffuser assemblies, 1 compressor, and compressor mounting option
- Some models include SureSink tubing
- Ideal for small to mid-size ponds and lakes



Base Mount Cabinet



Base Mount, Post Mount, and No-Cabinet Option



Internal Filter Indicator for Easy Status Checks



No Electricity in the Water Makes it Safe for Swimming



Lifetime Warranty - Diffuser & Cabinet
 15-Year Warranty - Tubing
 3-Year Warranty - Compressor
 2-Year Warranty - Compressor Piston Cups & Cylinders

SYSTEMS INCLUDE	NO-CABINET		POST MOUNT CABINET		BASE MOUNT CABINET		REMOTE MANIFOLD SYSTEMS <i>Allows remote installation of cabinet, compressors, and valves.</i>
	120V	208-240V	120V	208-240V	120V	208-240V	
STANDARD SYSTEMS							
SYSTEM 1 (1) Diffuser Assembly 100 ft. 3/8 in. Tubing (1) 1/4HP Compressor	RA1-NC	RAH1-NC	RA1-PM	RAH1-PM	RA1	RAH1	Add "-RM" to the end of any RA1 or RAH1 part # and increase cost by \$104.
	\$1,480		\$1,959		\$2,676		
SYSTEM 2 (2) Diffuser Assemblies 200 ft. 3/8 in. Tubing (1) 1/4HP Compressor	RA2-NC	RAH2-NC	RA2-PM	RAH2-PM	RA2	RAH2	Add "-RM" to the end of any RA2 or RAH2 part # and increase cost by \$219.
	\$2,189		\$2,615		\$3,339		
SYSTEM 3 (3) Diffuser Assemblies 300 ft. 3/8 in. Tubing (1) 1/2HP Compressor	RA3-NC	RAH3-NC	RA3-PM	RAH3-PM	RA3	RAH3	Add "-RM" to the end of any RA3 or RAH3 part # and increase cost by \$247.
	\$2,845		\$3,362		\$4,065		
DOUBLE PISTON (DP) SYSTEMS							
SYSTEM 2 (2) Diffuser Assemblies 200 ft. 3/8 in. Tubing (1) 1/2HP Compressor	RA2DP-NC	RAH2DP-NC	RA2DP-PM	RAH2DP-PM	RA2DP	RAH2DP	Add "-RM" to the end of any RA2DP or RAH2DP part # and increase cost by \$219.
	\$2,397		\$2,825		\$3,550		

Product Notes:

1. If less tubing is needed than what is included, subtract retail price of the rolls not needed. If more rolls are needed, order these rolls as a separate line item.
2. No-Cabinet Systems include mounting bracket with cooling fan.
3. Solar-powered option available for RA1-PM, RA2-PM, RA3-PM systems (120V only). Contact Kasco for details.

ROBUSTAIRE™

MEDIUM SYSTEMS WITH AIREGUARD CABINET TECHNOLOGY

- Includes 4 - 6 diffuser assemblies, 2 compressors, and medium cabinet
- SureSink tubing is not included
- Ideal for mid-sized ponds and lakes



Medium Cabinet with
AireGuard Cabinet Technology



External Filter Indicator
for Easy Status Checks



No Electricity in the Water
Makes it Safe for Swimming



Lifetime Warranty - Diffuser & Cabinet
15-Year Warranty - Tubing
3-Year Warranty - Compressor
2-Year Warranty - Compressor Piston Cups & Cylinders

SYSTEMS INCLUDE	MEDIUM CABINET		REMOTE MANIFOLD SYSTEMS
	120V	208-240V	<i>Allows remote installation of cabinet, compressors, and valves. Systems include remote valve manifold and valve box.</i>
SYSTEM 4 (4) Diffuser Assemblies (2) 1/2HP Compressors NEW Medium Cabinet	RA4	RAH4	Add "-RM" to the end of any RA or RAH part # in this table and increase cost by \$430.
	\$5,579		
SYSTEM 5 (5) Diffuser Assemblies (2) 1/2HP Compressors NEW Medium Cabinet	RA5	RAH5	
	\$5,889		
SYSTEM 6 (6) Diffuser Assemblies (2) 1/2HP Compressors NEW Medium Cabinet	RA6	RAH6	
	\$6,199		



ROBUSTAIRE™

LARGE SYSTEMS WITH AIREGUARD CABINET TECHNOLOGY

- Includes 7 - 12 diffuser assemblies, 3 - 4 compressors, and large cabinet
- Tubing not included
- Ideal for large recreational or industrial lakes



Large Cabinet with AireGuard Cabinet Technology



External Gauges for Easy Status Checks



No Electricity in the Water Makes it Safe for Swimming



Lifetime Warranty - Diffuser & Cabinet
 15-Year Warranty - Tubing
 3-Year Warranty - Compressor
 2-Year Warranty - Compressor Piston Cups & Cylinders

SYSTEMS INCLUDE	LARGE CABINET		REMOTE MANIFOLD SYSTEMS
	120V	208-240V	<i>Allows remote installation of cabinet, compressors, and valves. Systems include remote valve manifold and valve box.</i>
SYSTEM 7 (7) Diffuser Assemblies (3) 1/2HP Compressors NEW Large Cabinet	RA7	RAH7	Add "-RM" to the end of any RA or RAH part # in this table and increase cost by \$850.
	\$9,921		
SYSTEM 8 (8) Diffuser Assemblies (3) 1/2HP Compressors NEW Large Cabinet	RA8	RAH8	
	\$10,221		
SYSTEM 9 (9) Diffuser Assemblies (3) 1/2HP Compressors NEW Large Cabinet	RA9	RAH9	
	\$10,551		
SYSTEM 10 (10) Diffuser Assemblies (4) 1/2HP Compressors NEW Large Cabinet	RA10	RAH10	
	\$12,160		
SYSTEM 11 (11) Diffuser Assemblies (4) 1/2HP Compressors NEW Large Cabinet	RA11	RAH11	
	\$12,471		
SYSTEM 12 (12) Diffuser Assemblies (4) 1/2HP Compressors NEW Large Cabinet	RA12	RAH12	
	\$12,771		

INSIDE AIREGUARD CABINET TECHNOLOGY

AireGuard Cabinet Technology tackles the biggest stressors on compressor operation: heat and dust.



Air is passed through an external filter removing excess dust and debris.



Powerful fans pull clean air through the compressor allowing it to stay cooler and operate efficiently.



Dual-action filtering and air movement safeguards the entire system.



Cabinet interiors stay cleaner and withstand the toughest outdoor conditions.

RobustAire™ Large Cabinet with AireGuard Cabinet Technology



Compressor Cabinet Details

BASE MOUNT CABINET

Accommodates 1 compressor and supplies air to 1 - 3 diffuser assemblies. Mount on shore, away from areas that may flood.



POST MOUNT CABINET

Accommodates 1 compressor and supplies air to 1 - 3 diffuser assemblies. Attach cabinet to post or vertical wall.



MEDIUM CABINET WITH AIREGUARD CABINET TECHNOLOGY

Accommodates 2 compressors and supplies air to 4 - 6 diffuser assemblies. Mount on shore, away from areas that may flood.



LARGE CABINET WITH AIREGUARD CABINET TECHNOLOGY

Accommodates 3 - 4 compressors and supplies air to 7 - 12 diffuser assemblies. Mount on shore, away from areas that may flood.



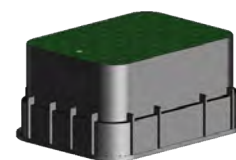
NO-CABINET

Accommodates 1 compressor and supplies air to 1 - 3 diffuser assemblies. Mount in a clean, dry location with protection from outdoor conditions.



REMOTE MANIFOLD SYSTEMS

Allows remote installation of cabinet, compressors, and valves. Systems include remote valve manifold and valve box.



ROBUSTAIRE™ ACCESSORIES

PART #	DESCRIPTION	INCLUDES	MSRP
772100	RobustAire Dual-Loop Diffuser Assembly	(1) Diffuser assembly, (1) 3/8 in. and (1) 5/8 in. barbed fitting	\$347
773380	SureSink Weighted Tubing Kit 3/8 in. (100 ft. roll)	All necessary fittings for attaching to the compressor, diffuser assembly, and for extending length of tubing runs	\$125
773580	SureSink Weighted Tubing Kit 5/8 in. (100 ft. roll)	All necessary fittings for attaching to the compressor, diffuser assembly, and for extending length of tubing runs	\$160
773385	SureSink Weighted Tubing Kit 3/8 in. (500 ft. roll)	500 ft. rolls do not include fittings	\$600
773585	SureSink Weighted Tubing Kit 5/8 in. (500 ft. roll)	500 ft. rolls do not include fittings	\$760
773300	3/8 in. tube fitting kit (included in 3/8 in. x 100 ft. tubing kits)	(1) 3/8 in. x 3/8 in. barbed connector, (2) 3/8 in. hose clamps	\$8.57
773500	5/8 in. tube fitting kit (included in 5/8 in. x 100 ft. tubing kits)	(1) 5/8 in. x 5/8 in. barbed connector, (2) 3/8 in. x 5/8 in. barbed connectors, (2) 5/8 in. hose clamps, (2) 3/8 in. hose clamps	\$18.76
774061	5/8 in. hose barb kit with clamps	(6) 5/8in. barbed fittings, (6) 5/8 in. hose clamps	\$75
773310	10 pack of 3/8 in. connector kits	(10) 3/8 in. x 3/8 in. barbed connectors, (20) 3/8 in. hose clamps	\$57
773058	10 pack of 5/8 in. connector kits	(10) 5/8 in. x 5/8 in. barbed connectors, (20) 5/8 in. hose clamps	\$68.50

TEICHAIRE

COMPRESSORS

- 120V and 208-240V options
- Quiet, oil-less piston compressors
- Built for continuous-duty, year-round, large aeration applications



ALL COMPRESSORS INCLUDE:

- Pressure relief valve
- Vibration mounts
- Intake air filter assembly
- Brass hose fittings
- 6 ft. power cord
- Thermal overload protection
- Restarts under load



1/4, 1/2, & 3/4HP
Available



3-Year Warranty - Motor
2-Year Warranty - Piston Cups & Cylinders



120V & 208-240V Models
Are UL & CSA Recognized



208-240V Models
Have CE Certification

PART #	HP	VOLT (V)	WEIGHT (LB)	AMP @ 0 PSI	AMP @ 20 PSI	MSRP
KM-60C	1/4	120	16	2.2	3.2	\$663
KM-60HC	1/4	208-240	16	1.1	1.6	\$663
KM-120C	1/2	120	19	3.0	4.0	\$853
KM-120HC	1/2	208-240	19	1.5	2.0	\$853
KM-200C	3/4	120	28	5.4	6.9	\$1,565
KM-200HC	3/4	208-240	28	3.1	3.7	\$1,565

POND PROBIOTICS

BENEFICIAL BACTERIA

Pond Probiotics are a safe, non-chemical approach to water quality management and produce a healthy, balanced ecosystem with its highly concentrated, unique blend of naturally occurring bacteria and enzymes. No irrigation restrictions or permit required.



Available as Quick-Dissolving Powder, Tablets, and Slow-Releasing Blocks



Water Must Be 55° F or Warmer



Removes Pond Scum and Floating Particles



Eliminates Waste, Dead Grass, and Foul Odors



Safe for People, Pets, and Livestock

PART #	DESCRIPTION	CONTENTS TREAT	MSRP
MZ8	(1) 8 oz. WS bag	8 oz. treats 1/2 acre ft.	\$13.36
MZ8C	(40) 8 oz. WS bags (case)	Up to 20 acre ft.	\$529
MZ25	25 lb. bag of bulk powder in pail (no WS bags)	Up to 25 acre ft.	\$583
MZMP7	Pond Probiotic Muck Pucks - 7 lb. pail with 266 pucks	Up to 10 ft ² per puck	\$95
MZMB5	Pond Probiotic Muck Block - (1) 6 lb. block	Up to 6 acre ft.	\$89.50

Product Notes:

1. WS = Water soluble bag.
2. One acre foot (1 acre of surface area with 1 ft. of depth) = 325,851 gallons.
3. To determine gallons: length (ft.) x width (ft.) x avg. water depth (ft.) x 7.48 = gallons.





BEFORE



AFTER

Quick-Dissolving Powder

For small ponds and water gardens. Reapply every 2-3 weeks.



Muck Puck Tablets

For small or medium ponds, as spot treatments. Reapply every 2-3 weeks.



Muck Blocks

For medium ponds, large ponds, or feeder streams. Reapply every 30 days.




Combine Pond Probiotics with a Kasco aeration method for maximum water quality results.



ACCESSORIES

Mounts, Control Panels, Protective Sleeving, & Much More



Kasco offers a robust selection of accessories that complement our main product offering, increasing their effectiveness and convenience. Accessory items are designed to help Kasco products better fit your specific application and improve your experience using Kasco products.

UNIT MOUNTING OPTIONS

MOUNT KITS

Secure your Kasco unit to a dock, pier, walkway, or other in-water structure. Choose your desired depth, angle, and flow of water to achieve desired results.

Universal Kits

- For 1/2, 3/4, and 1HP units
- Requires 1 in. / 25 DN nominal threaded / unthreaded pipe

Industrial Kits

- For 1/2, 3/4, 1, and 2HP units
- Requires 1.5 in. / 40 DN nominal threaded / unthreaded pipe



Universal Kit

Industrial Kit



U-bolt Kit Prevents Drilling into Structure
(Purchased separately)



Simple Swivel Directs Water to Desired Area
(Included with kit)



Multiple Angles of Unit Orientation



Lifetime Warranty

HORIZONTAL FLOAT

Suspend your AquatiClear Circulator below the water's surface and safely anchor it to shore. Using stainless steel hardware and components, the float accommodates 1/2, 3/4, and 1HP units.



3 Tie-Down Loops for Secure Installation



Power Cord Strain Relief Clip Included



3 Angles of Unit Orientation



3-Year Warranty

PART #	DESCRIPTION	UNITS COMPATIBLE	MSRP
243478	Universal Mount with Simple Swivel bracket (patent pending)	1/2, 3/4, and 1HP units	\$372
243479	Industrial Mount with Simple Swivel bracket (patent pending)	1/2, 3/4, 1, and 2HP units in harsh conditions	\$616
997108K	U-Bolt Kit for Universal and Industrial Kits (allows installation without drilling)	1/2, 3/4, and 1HP units	\$18
213001	Horizontal Float with tie-down loops	1/2, 3/4, and 1HP units	\$500

* Simple Swivel bracket is patent pending.

Product Notes:

1. For Universal and Industrial Kits, customer supplies hardware to secure mount. Customer also supplies pipe that does not exceed 10 ft.

CONTROL PANELS

Control panels allow energy-saving automatic control of your Kasco unit. Select your desired settings, and the control panel will handle the rest. Kasco control panels are approved and listed to the most stringent UL and CSA standards to deliver the safety and performance you need.



IMPORTANT SAFETY NOTES



NEVER Enter the Water While Equipment is Operating or Plugged in



Never Bypass GFCI-Protected Circuit



Test GFCI Every 30 Days After Unit Installation



For Electrical Wiring, Follow All Codes and Consult Qualified Electrician

PART #	MODEL	USE WITH	CONTROL FUNCTION	GROUND FAULT PROTECTION	MSRP
125250	C-25	120V, 1/2, 3/4, and 1HP fountains, AquatiClear Circulators, and surface aerators	(1) 24-HR timer and photocell	6 milliamp (human-rated)	\$351
176005	C-85	208-240V, 3/4, 1, and 2HP fountains and surface aerators 208-240V, 3/4, 1, and 2HP AquatiClear Circulators	(2) 24-HR timers	6 milliamp (human-rated)	\$1,942
176090	C-95	208-240V, 3 and 5HP fountains and surface aerators	(2) 24-HR timers	6 milliamp (human-rated)	\$1,946
176332	C-220	208-240V, 3/4, and 1HP AquatiClear Circulators 208-240V, 3/4, 1, and 2HP surface aerators	(1) 24-HR timer	6 milliamp (human-rated)	\$1,290
176333	C-230	208-240V, 3 and 5HP surface aerators	(1) 24-HR timer	6 milliamp (human-rated)	\$1,290
176210	CA-3235	208-240V, 2, 3, and 5HP three phase surface aerators	(1) 24-HR timer	30 milliamp (equipment-rated)	\$3,296
176200	CF-3235	208-240V, 2, 3, and 5HP three phase fountains and surface aerators	(2) 24-HR timers	5 milliamp (human-rated)	\$4,340
176204	CF-3075	208-240V, 7.5HP three phase fountains	(2) 24-HR timers	5 milliamp (human-rated)	\$4,062

Product Notes:

1. The C-25 has one timer to operate the unit and a photocell to operate the lights.
2. The C-85, C-95, CF-3235, and CF-3075 have two timers, one for the unit and one for the lights. These panels do not include a photocell.
3. Power cord lengths can be up to 500 ft. Never add any additional cord, as that will void warranty, void ETL approval, and can cause nuisance tripping of the GFCI.
4. Any unauthorized modifications to any Kasco control panel will void the UL listing and Kasco warranty.
5. Kasco includes a GFCI tester with all 1/2, 3/4, and 1HP units that can be used to test an outlet prior to use.

EXTRAS

Get the most from your Kasco unit with the accessories listed below. From strain relief and protective cord sleeves to quick disconnects, Kasco has what you need to keep your unit operating at its best.



Stainless Steel Protective Cord Sleeving is available. Contact Kasco for pricing.

PART #	DESCRIPTION	MSRP
243609	AquatiClear Shallow Water Install Kit	\$120
636400	Optional 3-point strain relief conversion kit for 16-gauge through 10-gauge cords	\$128
636175	Quick disconnect added to 50 ft. or 100 ft. power cord for units <i>(Quick disconnect comes standard on 100 ft. cords for all 1HP (120V), 2HP, 3.1HP, and 5.1HP units)</i>	\$309
840303	3-light kit adapter for 3-piece sectional floats	\$50.25
840306	6-light kit adapter for 3-piece sectional floats	\$411
997108K	U-bolt Kit for Universal and Industrial Mount Kits allows installation without needing to drill into structure.	\$18
645315	3/8 in. flex sleeving per foot (for 16-, 14-, and 12-gauge cords) - 50 ft. increments	\$3.02
645317	3/8 in. flex sleeving per foot installed on cord at Kasco - 50 ft. increments	\$4.29
645330	1/2 in. flex sleeving per foot (for 10-gauge cords) - 50 ft. increments	\$3.36
645332	1/2 in. flex sleeving per foot installed on cord at Kasco - 50 ft. increments	\$4.49
645336	1/2 in. and 3/8 in. speed tool for installing flex sleeving	\$16.31
645340	3/4 in. flex sleeving per foot (for 8-gauge cords) - 50 ft. increments	\$4.52
645342	3/4 in. flex sleeving per foot installed on cord at Kasco - 50 ft. increments	\$5.68
645346	3/4 in. speed tool for installing flex sleeving	\$19.71
990926	Food grade mineral oil option	Contact Kasco for pricing.



KASCO DE-ICERS

The #1 Selling De-icer in the World



Protect Your Waterfront from Ice Damage

By pulling warmer water up, Kasco De-icers create an opening at the water's surface, keeping boats and docks safe from damaging ice buildup.

Kasco De-icers create more thrust than any other product on the market. More thrust means more open water to better protect your property.

- Offered as 1/2HP and 208-240V
- Includes (2) 20 ft. suspension ropes
- Mount with ropes or Universal or Industrial Mount Kits
- Optional control panels for automatic time and temperature settings



1/2, 3/4, & 1HP Available



3-Year Warranty



ETL Listed to UL and CSA Standards



Universal Mount



Industrial Mount



Mooring Ropes (Included)



Available to specialty distribution.
Contact Kasco for Details.



3/4HP De-icer

Kasco De-icer
800 Deere Road, Prescott, WI 54021-1241 USA
DO NOT TURN ON UNTIL MOTOR IS SUBMERGED
THE MOTOR IS WATER COOLED OF AN OIL FILLED DESIGN WITH THERMO OVERLOAD PROTECTION. IT IS NOT TO BE SUBMERGED IN OIL AND EQUIPPED WITH A THERMO OVERLOAD PROTECTION. AN AUTOMATIC RESET. NO FURTHER LUBRICATION IS NECESSARY. THE ANODE MUST BE REPLACED AS NECESSARY OR WARRANTY WILL BE VOID.
CAUTION: ALWAYS KEEP PEOPLE AND OTHER OBJECTS CLEAR OF THE DE-ICER WHEN OPERATING IN WATER.
ATTENTION: Toujours garder les gens et d'autres objets clairs de l'appareil dans l'eau.
MODEL 3400D 3/4 HP MFG DATE 11/22/21
SERIAL NO. 1247ND343433 ROTATION LH
VOLTS 120 V 60 Hz 1 Phase
AMPS 6.7 A CONTINUOUS DUTY
www.kascomarine.com

**WARRANTY PERIODS
(INCLUDES CONTROL PANEL):**

J SERIES FOUNTAINS

- 3/4 and 1HP: 2 years
- 2HP: 3 years
- 3, 5, and 7.5HP: 5 years

VFX SERIES FOUNTAINS

- 1/2, 3/4, and 1HP: 2 years
- 2 and 5HP: 3 years

SURFACE AERATORS

- 1/2, 3/4, and 1HP: 2 years
- 2, 3, and 5HP: 3 years

WATERGLOW LIGHTING

- RGB LED: 2 years
- Composite LED: 2 years
- Stainless Steel LED: 3 years
- RGBW LED: 5 years
- Universal Lighting: 2 years

AQUATICLEAR™ CIRCULATORS

- 1/2, 3/4, and 1HP: 2 years

ROBUSTAIRE™

- Compressor:
 - Motor: 3 years
 - Piston Cup: 2 years
 - Cylinder: 2 years
- Tubing: 15 years
- Diffuser: Lifetime
- Cabinet: Lifetime

SOLAR

- PicoCell™ Controller: 1 year
- Kasco Unit: Standard Kasco Warranty

“R” (REPLACEMENT) UNITS

- 1/2, 3/4, and 1HP: 2 years
- 2, 3, and 5HP units: 3 years
- 7.5HP: 3 years

WARRANTY

STANDARD WARRANTY:

Kasco Marine, Inc. warrants products to be free from defects in material or workmanship under normal use and service. This warranty excludes damage to the equipment from improper handling or installation as well as damage caused by environmental factors (examples include but are not limited to: cuts in or crushing of the power cord, damage to mooring lines and ropes, foreign objects causing damage to props or motor shafts, and improper power feeds). The Kasco Marine, Inc. obligation under this warranty is limited to replacing or repairing, free of charge, any defective part within the warranty period.

All units sent back to the factory or authorized repair center should be accompanied by the repair form, found at kascomarine.com. Customer is responsible to pay shipping charges.

WARRANTY IS VOID IF:

1. The product is not maintained according to the maintenance recommendations supplied in owner’s manual.
2. The product is returned for repair without the power cord (cuts in the power cord and field splices are not covered under warranty).
3. The unit, control box, or power cord are altered in any way from original shipment.
4. The product is not used with a GFCI-protected outlet, or not used with the supplied GFCI control panel.
5. The product is damaged by unauthorized tampering.
6. The sacrificial anode shows significant deterioration.

EXTENDED WARRANTY:

The extended warranty is an additional 2 years beyond the 3-year warranty.

- The unit and the extended warranty must be ordered at the same time and on the same P.O. with the warranty as its own line item.
- Standard warranty requirements apply (regular cleaning, no unauthorized tampering, etc.) - no additional maintenance required.
- Unit must be sold with a control panel.
- Coverage includes unit, control panel and power cord.
- ELIGIBLE PRODUCTS:

- a. 2HP J Series Fountains
- b. 2 and 5HP VFX Fountains
- c. 2, 3, and 5HP Surface Aerators

PART #	HP	MSRP
EW2F	2	\$800
EW3F	3	\$925
EW4F	5	\$1,100

MAP, PRODUCT RETURN, & REPAIR

MAP (MINIMUM ADVERTISED PRICING):

MAP on fountains, surface aerators, AquatiClear™ Circulators, WaterGlow Lighting, RobustAire™ and Pond Probiotics is full retail.

Prices are subject to change without notice and are not guaranteed for the entire year.

NEW OR UNUSED PRODUCT RETURN:

If an item has not entered the water, it can be returned to Kasco:

1. Contact Kasco to receive an RMA number and RMA form.
2. Package the item(s) adequately (original packaging preferred) and return to Kasco with completed RMA form and RMA number on the shipping label or written on the box.

IMPORTANT:

- 10% restocking fee will be applied to all returns.
- Additional fees may apply for partial returns.
- An item will not be accepted for return if it has been in the water.
- Kasco will not reimburse for product that was damaged during return shipment.
- Only new, clean, and unused items may be returned for credit.
- Items may not be returned after 6 months from the time of purchase.

REPAIR:

Equipment can be shipped to Kasco or an authorized service center for a repair estimate. Contact us if you'd like to find an authorized repair center near you. Kasco aims to provide a free cost estimate as soon as possible. After customer approval, the repair can be made in just a few days.

- Please include upper pump housing or wire cage for aerators and de-icers.
- Kasco is not responsible for shipping damage from customer to Kasco.
- Do not send floats. Kasco will charge \$200 for float disassembly and cleaning.
- It is the responsibility of the customer to ship and pay freight to Kasco.

SHIPPING

DAMAGED SHIPMENTS:

Please thoroughly inspect incoming shipments prior to accepting. Once a shipment is accepted by the receiver, it is difficult, if not impossible, to get the freight company to pay for damage. If boxes have been damaged, opened, repackaged, a pallet re-strapped, etc., it is best to simply refuse the delivery. This ensures the carrier cannot blame the receiver for the damage and that the shipment gets returned to Kasco. In the unfortunate event of damage or shortage to your order, please notify customer service and make a note on any shipping-related documents. Photos of the packaging and product will also help our customer service team expedite your claim and find the fastest resolution.

SHIPPING

FREIGHT QUOTES:

Please email freight quotes to sales@kascomarine.com and include the below:

- Shipping address
- Commercial or residential
- Offload or lift gate requirements
- Delivery notification contact info

NOTE: Some addresses are extended delivery areas and additional charges may apply. Quotes are estimates, valid for 30 days, and may vary.

MOTOR FREIGHT-ONLY SHIPMENTS

2HP and larger units with power cords longer than 400 ft. ship motor freight only.

DISTRIBUTOR TOOLS



KASCO WEBSITE



DISTRIBUTOR PORTAL



ONLINE TRAINING



QUALIFIED LEAD ROUTING



Kasco[®]

MOVING WATER FORWARD, SINCE 1968

kascomarine.com | 715.262.4488 | sales@kascomarine.com

800 Deere Road, Prescott, WI U.S.A. 54021