



**wig alive**®

**WIG CAPS**

**WIG DRYING CABINETS**

[www.wigalive.com](http://www.wigalive.com) | tel: (980) 890-7010

# **Guardian**®

## **Manikin & Wig Dryer**

### **Spec Sheet and**

### **Wiring Diagrams**

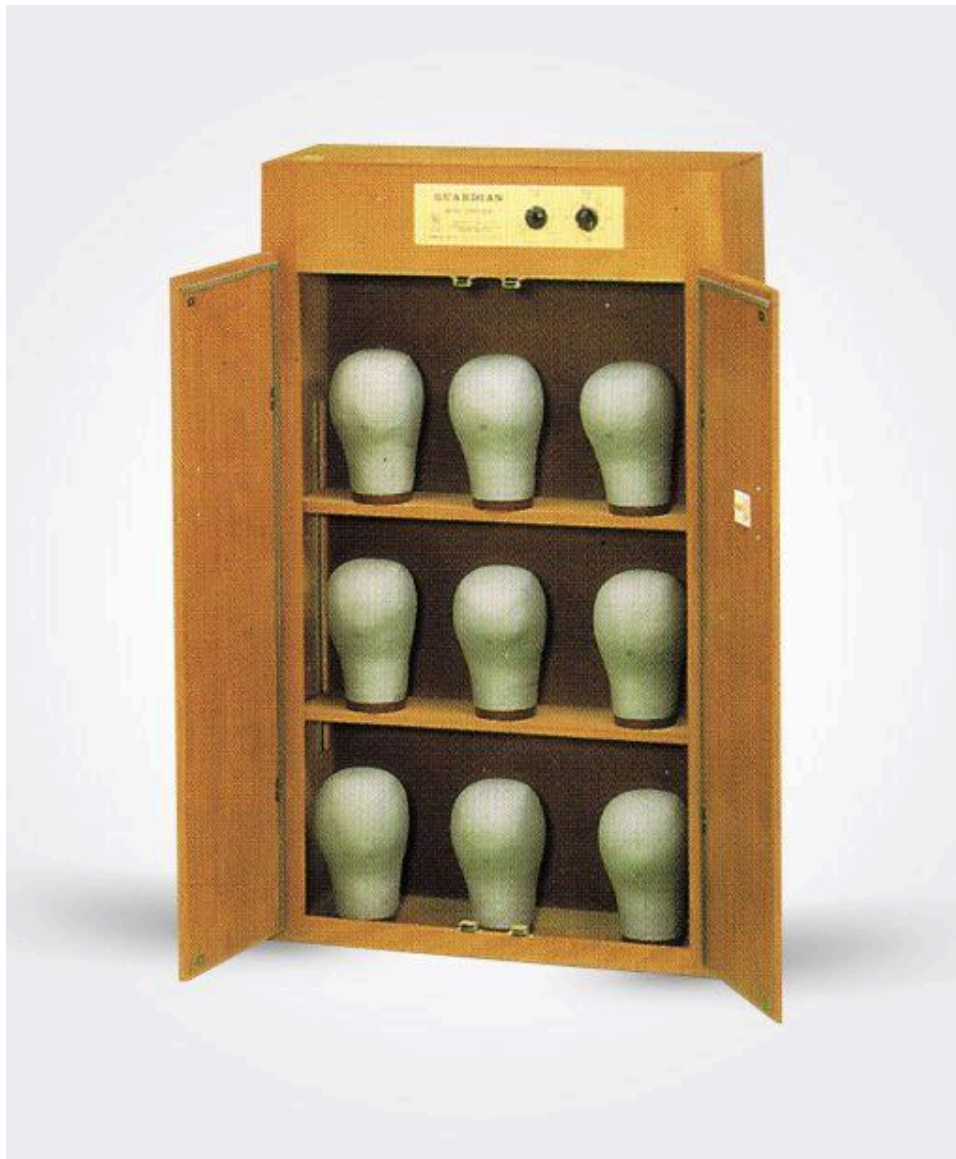
#### **MANUFACTURER CONTACT**

MirOil USA, LLC  
13114 Bleinheim Lane STE B  
Matthews  
28105  
+1 980 890 7010  
[ORDERS@MIROIL.COM](mailto:ORDERS@MIROIL.COM)

**FURNISH THE DRYER SERIAL NUMBER** with all inquiries.

## Wig Dryer Super #9

- 9 to 12 Wig Capacity
- 3 Tiers - 2 Adjustable Shelves
- 115 Volt - 15 Amps - 50 Hz - 1650 watts - 2860 rpm
- Adjustable thermostat and timer
- 32"W x 53"H x 13"Deep
- 95 Lbs
- Ships on a pallet, class 300, 48x40x62, 150 lb
- One year limited warranty.
- Heat = 45 mins to 175 F (max 200F)



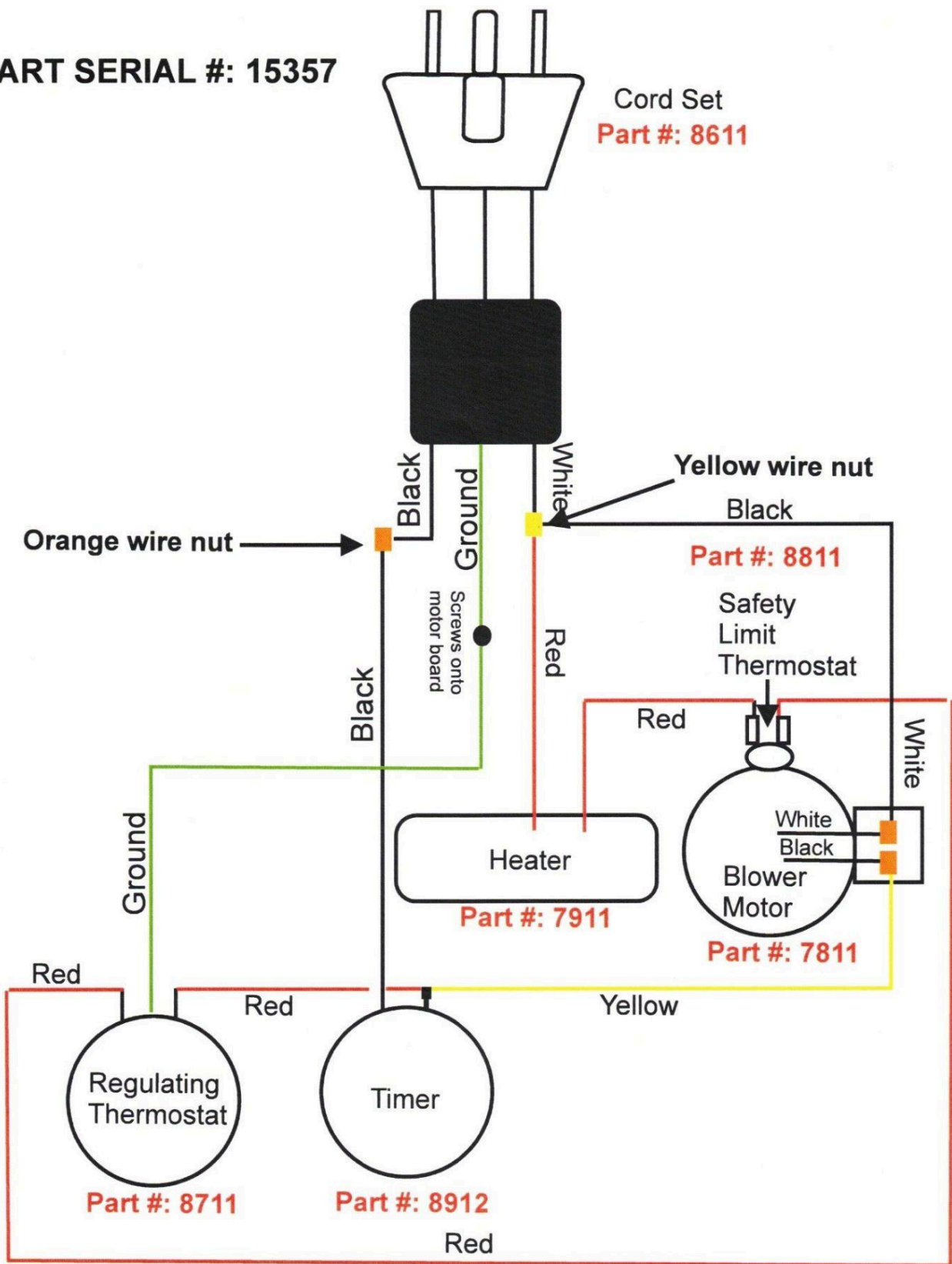
## Wig Dryer Standard #6

- 6 Wig Capacity
- 2 Tiers - 1 Adjustable Shelves
- 115 Volt - 15 Amps - 50 Hz - 1650 watts - 2860 rpm
- 32"W x 44"H x 13" Deep
- 75 Lbs
- Ships on a pallet, class 300, 48x40x47, 140 lb
- One year limited warranty
- 2 adjustable shelves. 9 wig capacity.
- Heat = 45 mins to 175 F (max 200F)



START SERIAL #: 15357

Cord Set  
Part #: 8611

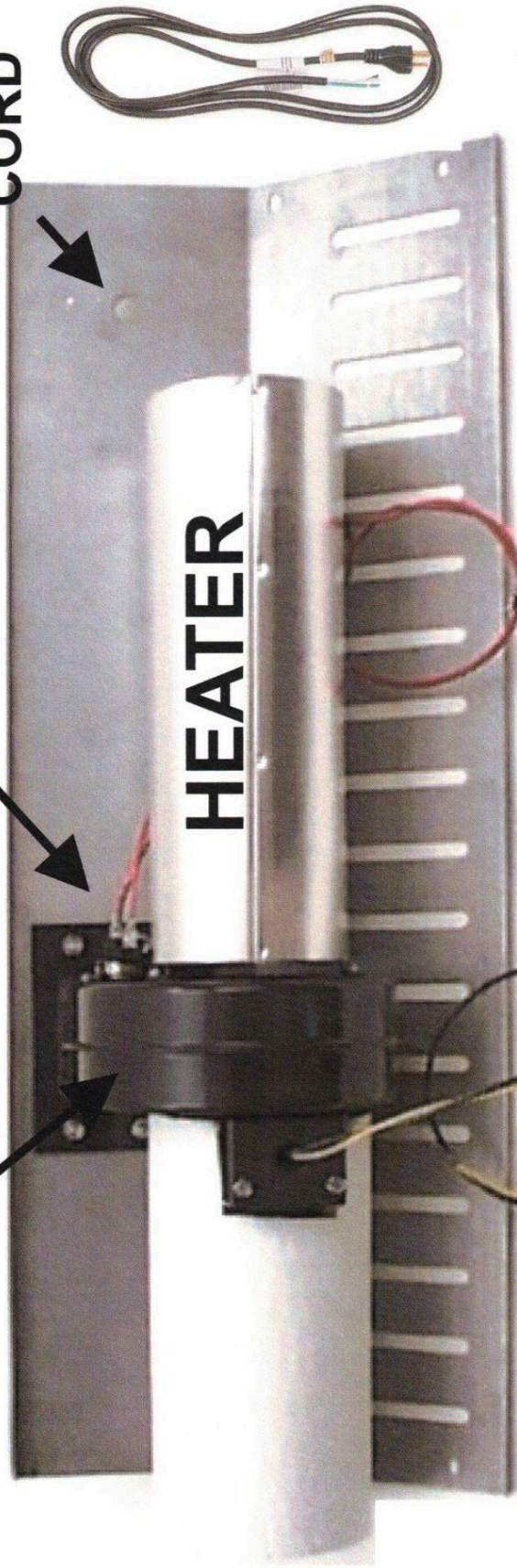


**START SERIAL #:15357**

**BLOWER MOTOR**

**SAFETY LIMIT THERMOSTAT**

**POWER CORD**



1 red wire from heater connects to safety limit thermostat

1 red wire from heater connects to white from power cord & black from blower motor

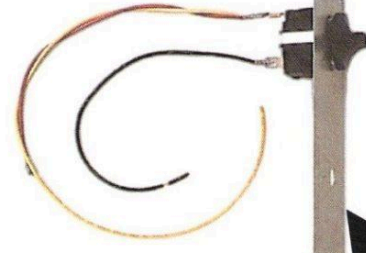
white wire from blower motor connects to timer

black jumper wire connects to black from power cord & connects to timer

1 red jumper wire connects to regulating thermostat & timer

1 red jumper wire connects to safety limit thermostat & regulating thermostat

ground wire from cord screws into hole in motor board above power cord and also onto screw in regulating thermostat.



**REGULATING THERMOSTAT**