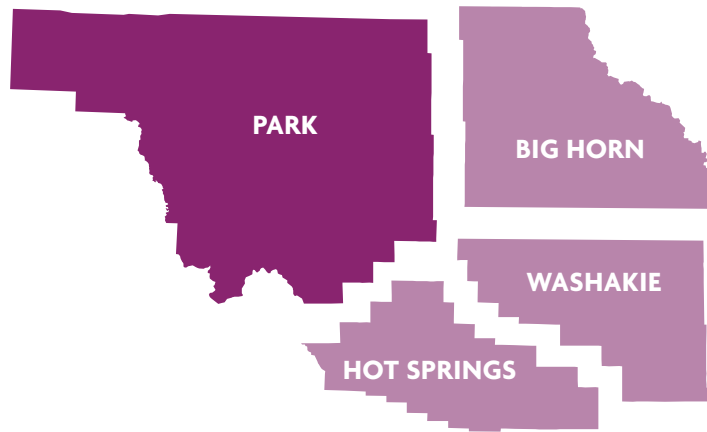


**Healthy
Park County**

A Park County Health Coalition Initiative

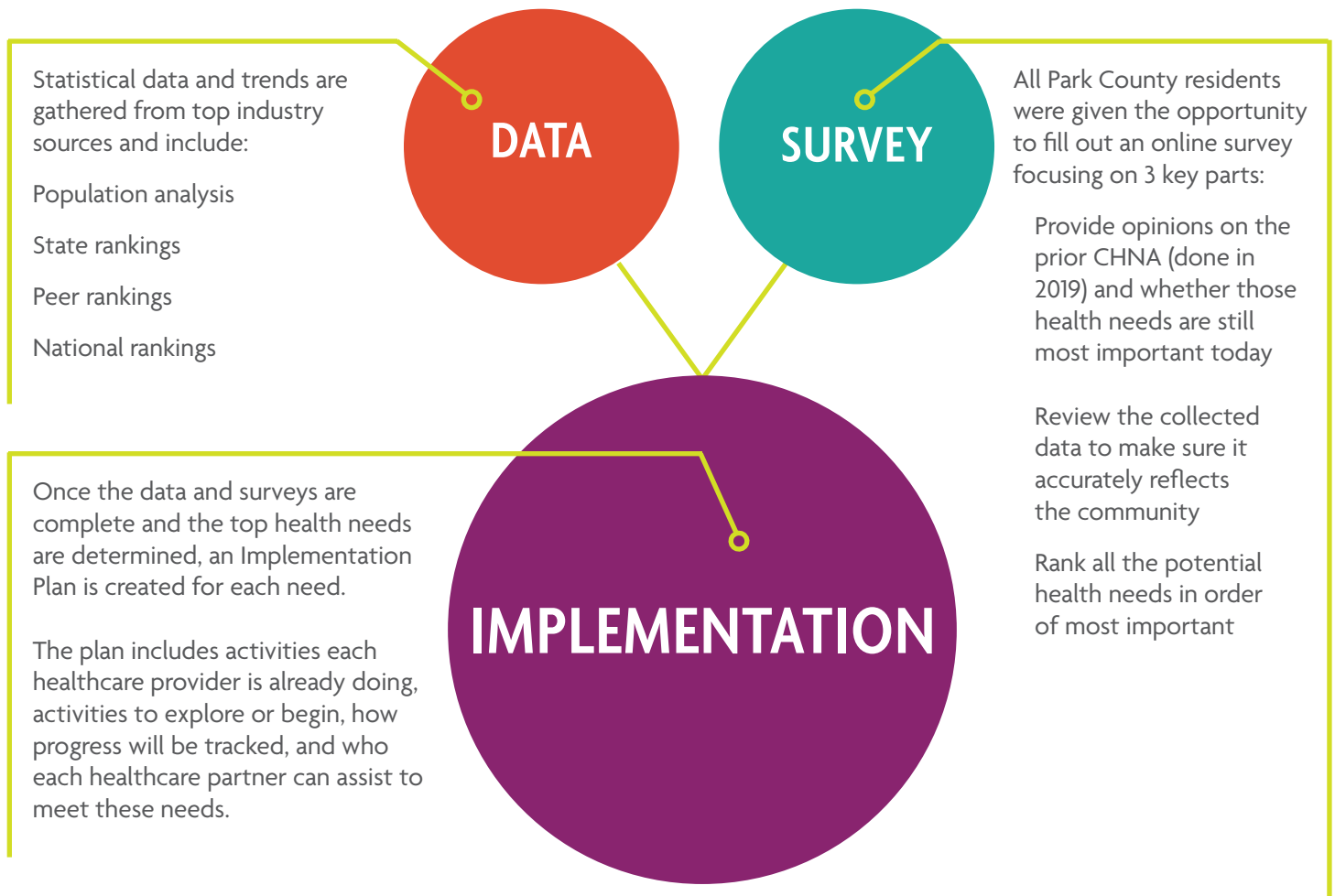
2025

Community Health Needs Assessment



Park County healthcare providers have come together to support the community in ways that go above and beyond providing care within their walls. To help determine the most critical health needs facing the area, these providers have performed a Community Health Needs Assessment (CHNA) that brings together county-level data and viewpoints throughout Park County. They then developed a plan for how it can help address the top health needs (see below).

Process



Data

DEMOGRAPHICS

	PARK COUNTY	WYOMING	U.S.
2023 Population	30,109	578,641	334.9 M
% Increase/Decline	+8.0%	-.8%	small change
Persons in poverty	8.4%	11.3%	12.5%
% White, non-Hispanic	88.3%	82.1%	60%
% Hispanic	4.4%	7.4%	19%
Median Household Income	\$70,533	\$74,815	\$77,719
Median Home Value	\$374,200	\$355,923	\$416,900
Unemployment Rate (2025)	3.2%	3.3%	4.2%
% Population >65	20–22%	17%	17%
% Households with a computer	96%	90.8%	95%

COMPARISON TO WYOMING COUNTIES



To better understand the community, Park County has been compared to all 23 counties in Wyoming across five areas: Health Outcomes, Health Behaviors, Clinical Care, Social & Economic Factors, and Physical Environment. Only areas where Park County is worse than both the state and U.S. best have been included.

	Park County	Wyoming	U.S. Best
Access to Exercise Opportunities	61%	76%	91%
Alcohol-impaired Driving Deaths	22%	33%	11%
Sexually Transmitted Infections [^]	304.4	374.4	161.2
Uninsured	13%	15%	6%
Unemployment	8%	5.8%	3.8%
Children in Poverty	16%	12%	10%
Violent Crime [^]	193	220	63
Long Commute - Driving Alone	80%	77%	66%
Children in single-parent households	26%	18%	15%
Injury Deaths	99	95	61

Data

2020 POPULATIONS

82414	Cody	10,045
82435	Powell	6,419
82440	Ralston	564
82410	Basin	1,286
82412	Byron	562
82421	Deaver	178
82426	Greybull	1,651
82431	Lovell	2,243
82401	Worland	5,487
TOTAL		28,435

Top 10 Causes of Death in Wyoming

- 01 HEART DISEASE
- 02 CANCER
- 03 ACCIDENTS (UNINTENTIONAL INJURIES)
- 04 CHRONIC LOWER RESPIRATORY DISEASE
- 05 COVID-19
- 06 ALZHEIMER'S DISEASE
- 07 STROKE
- 08 DIABETES
- 09 LIVER DISEASE
- 10 SUICIDE

Heart disease and cancer remain the top two causes of death in Wyoming, accounting for approximately 37% of all deaths.

Accidents (including vehicle crashes and unintentional poisonings) are the third leading cause, reflecting ongoing safety and substance use challenges.

COVID-19 continues to rank high but has declined since the peak for the pandemic.

Behavioral health concerns are evident in several categories, particularly accidents, liver disease, and suicide, underscoring the importance of integrated prevention strategies.

Survey

The Community Health Needs Assessment Survey was put together for quality data in support of the quantitative data collected. The survey was made available via public websites and coalition emails.

2025 Significant Health Needs According to Our Communities

Top 2 Health Concerns
Mental Health & healthcare Accessibility

A total of 952 individuals responded to Park County Survey. Comments included:

“It takes weeks to get in for an appointment—by then the issue has either gotten worse or gone away.”

“We shouldn’t have to travel to Billings for a cardiologist or mental health support.”

“Mental health services are nearly impossible to access unless you’re in crisis—and even then, it’s questionable.”

“I had a good experience with one provider, but it feels like a lottery—sometimes you feel heard, sometimes dismissed.”

“Cost is a huge barrier. Even with insurance, I delay care because I’m scared of the bills.”

“It feels like there are fewer and fewer doctors, especially for women’s health. That’s not okay.”

“Transportation is a real problem out here—especially for older adults and people who don’t drive.”

“I want to trust the healthcare system, but I’ve had too many experiences where I felt like just a number.”

Significant Health Needs

Based on this data, the following five health needs were identified as top Park County Health concerns. For more information on initiatives being implemented to address the following health needs, please contact Healthy Park County at <https://healthyparkcounty.org/contact-us/>.

1 Mental Health

2 Cancer

3 Substance Abuse

4 Obesity / Physical Activity

5 Heart / Healthcare Accessibility



THE 2025 COMMUNITY HEALTH NEEDS ASSESSMENT WAS PERFORMED IN PARTNERSHIP WITH:



* According to needs assessment data Park County Residents living in poverty experience a much higher rate of chronic health conditions than those with median to higher level incomes.