



MAX-Block Series Technical Specifications

Adjustable Assemblies



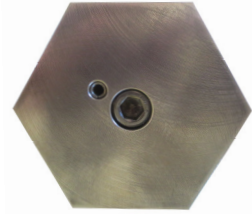
← 1/4" Anti-Rotation Pin
3/8" Grade 8 Socket Head Cap Screw
Standard 1/2" Thick x 3" Hex Profile

← 2" x 4 Threads Per Inch
Acme Thread

← 3" Diameter.
6061 T6 Aluminum Body
Safety Yellow, Powder Coat Finish
Custom colours are available
0.64 lbs./inch 7.7 lbs./foot

← Peel-Resistant, Factory Applied I.D. and Warning Label
Stamped Load Limit

← Standard 1/2" x 4" x 4" Aluminum Base Plate
Standard Accessory 1/4-20 Bolt for Optional Interlock
Available with an Optional 8" x 8" Base Plate



Fixed Height Assemblies



← Standard 1/2" x 4" x 4" Aluminum Top Plate

← 3" Diameter.
6061 T6 Aluminum Body
Safety Yellow, Powder Coat Finish
Custom colours are available
0.64 lbs./inch 7.7 lbs./foot

← Peel-Resistant, Factory Applied I.D. and Warning Label
Stamped Load Limit

← Standard 1/2" x 4" x 4" Aluminum Base Plate
Standard Accessory 1/4-20 Bolt for Optional Interlock
Available with an Optional 8" x 8" Base Plate

How to Order

Static Load Determination

Determine weight of ram and upper section of press tool and multiply x 2
If you do not have the original machine specifications, just use this hand formula:

$$\frac{\text{Press Bed Area (Square Inches)} \times \text{Shut Height (Inches)}}{1728 \text{ (Cubic Inches in one cubic foot)}} = \text{Static Load in tons}$$

Please note that the above method includes the weight of the upper section of the tool and provides a safety factor of 2x.

Block Height and Length of Screw

It is advisable to size the block to suit the maximum daylight of the press (Stroke up / Adjustment up). The screw can then be turned clock-wise for shorter requirements.

Maximum adjustment of 12" is available on the MAX-Block. Longer lengths are available. Please contact factory.

Load Ratings

Adjustable Max-Blocks

Valid for assemblies up to 72" in height

Contact Factory for other sizes

Screw Size	Up to 5" Adjustment	100 Tons
Screw Size	Up to 12" Adjustment	70 Tons

Fixed Height Max-Blocks

Valid for assemblies up to 57" in height

Contact Factory for other sizes

Up to 12"	170 Tons
35" Up to	125 Tons
Up to 57"	110 Tons

Holders and Accessories



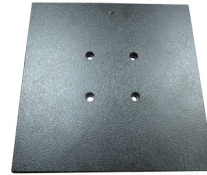
Affixed Handles



Adjustable MAX
Storage Hanger



Fixed Height MAX
Storage Hanger



Optional 8" Base



Hardwood Wedges
for Fixed Height
assemblies

Interlock Options

Each Interlock kit includes a dual-circuit interlock switch with a chain-affixed



Heavy-Duty
Interlock



Standard-Duty
Interlock



Industrial Safety Controls, Inc.

1706 - 22nd Avenue, Kenosha, WI 53140
(P.O. Box 126, Kenosha, WI 53141)

(262) 652-8660