



**MARS**



# Mars Rail-Fit Engineers Private Limited

Copyright © Mars Rail-Fit Engineers Private Limited

# ABOUT US

- M/s. MARS RAIL-FIT ENGINEERS PVT LTD – Chennai is a Private Limited Company established in December 2006 for manufacturing and supplying Double Ferrule Fittings with SS Tubes as a dedicated supplier to Indian Railways.
- Product Double Ferrule Fittings TYPE TESTED as per BS 6358 in the year 2007 and approved by M/s. ICF Chennai
- Approved as a Regular supplier for Double Ferrule Fittings and SS Tubes in the year 2008.
- Product Single Ferrule Fittings TYPE TESTED as per IS 10103 and approved by M/s. ICF Chennai.
- Proud to be mentioned as the sole supplier of double ferrule fittings and SS tubes for TRAIN- 18 brake line applications through Knorr Bremse India.
- IRIS approved in the year 2022.

# ABOUT US (continued...)

- Obtained a single order for Supply and Installation of Double Ferrule Fittings and SS Tubes for Exports through M/s RITES Limited for 60 nos Cape Gauge (1067mm) Passenger Coaches for Mozambique Railways.
- Obtained a single order of 1150 coach sets from M/s. MCF for Supply and Installation of Double Ferrule Fittings and SS Tubes for Air Spring Control Pneumatic Equipment and FIBA (Failure Indication in Brake application) Pipe Arrangement
- Proud to successfully supply many emergency orders to Integral Coach Factory, Rail Coach Factory, and Modern Coach Factory.
- Achieved 100 percent successful supplies, without any rejection.
- Supplier of Special couplings for Nilgiris Mountain Railways.

# PRODUCTS

- Double Ferrule Compression Fittings
- Single Ferrule Fittings
- Under Carriage Tube Holding Pipe Clamps
- Special Bend Pipes on ASTM A312 Sch-80s
- Cold Finished Austenitic SS Seamless Tubes ASTM A269 - 240 grid polished (in tie-up with Krystal Global Engineering Ltd., Baroda)

# CERTIFICATION / TESTING

- IRIS Certification® Conformity assessment:2020 and based on ISO/TS 22163: 2017
- Quality Management: ISO 9001:2015 for Hydro-Pneumatic Line Fittings.
- ISO 10103 for DIN Single Ferrule Fittings.
- Type Test (vibration, impulse pressure including vacuum ) as per BS 4368.

# CERTIFICATION / TESTING

- Test bench for Hydrostatic pressure up to 700 bar. Pneumatic testing up to 100 bar.
- Vacuum Test for vacuum up to 750 m bar
- Multi Test bench covering:
  - Burst Pressure Testing
  - Hydraulic Impulse and Vibration test
  - Temperature cycle
- Positive Material Identification (PMI) and Ultra Sonic Testing Machines available in-house.
- Vickers and Brinell Hardness Testing facilities available in-house.
- Profile Projector available in-house

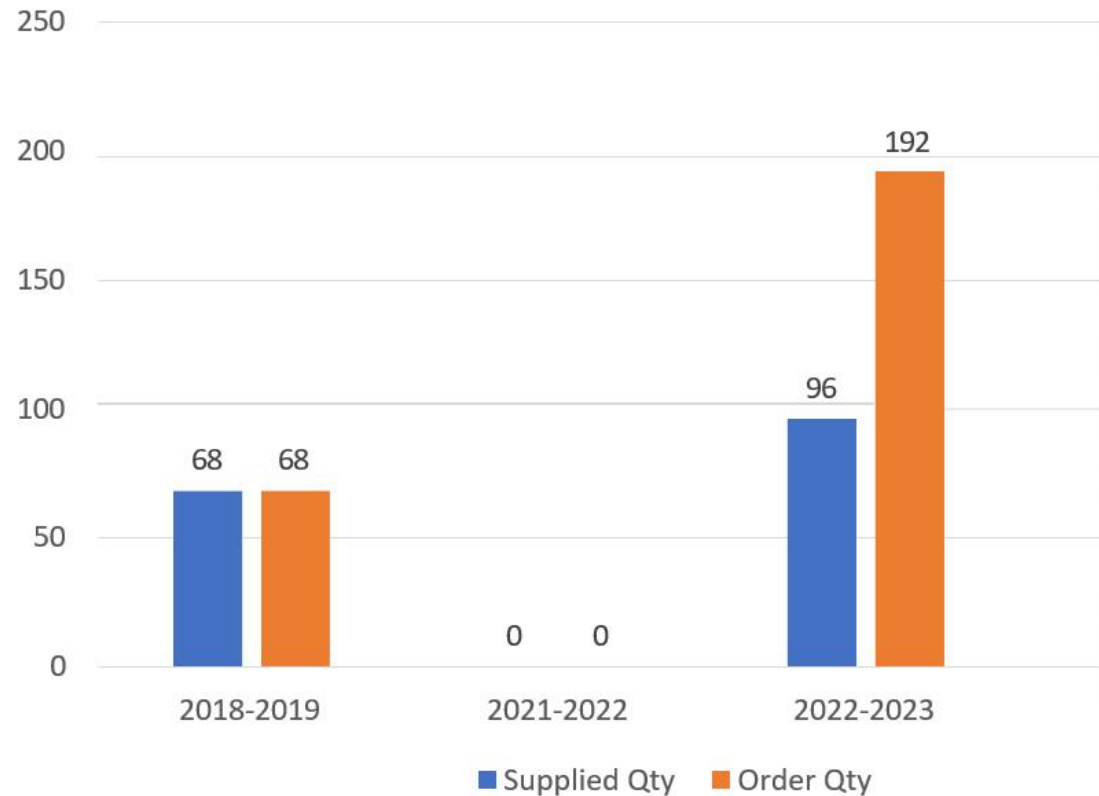
# HISTORY (2006-Current)

## THIS DAY IN THE HISTORY OF MARS RAIL-FIT





# TRAIN 18



**Sole Supplier of Double Ferrule Fittings and SS Tubes for Brake-line applications through Knorr Bremse India for TRAIN 18**



# CLIENTS of

# MARS



# IN-HOUSE TEST FACILITY

**Profile projector**



**Vickers Hardness Test**



**Vacuum Test**



# TESTING

**Hydro Pneumatic Test bench**



**Type Test Machine**





# STORAGE FACILITY

**Separate storage facility for Raw material / Bar / Ferrule Tubes**

**Separate storage facility for SS Tubes**

**Separate storage facility for Forged Blanks**

**Finished goods storage**



# MACHINERY: Pre-Machining yard



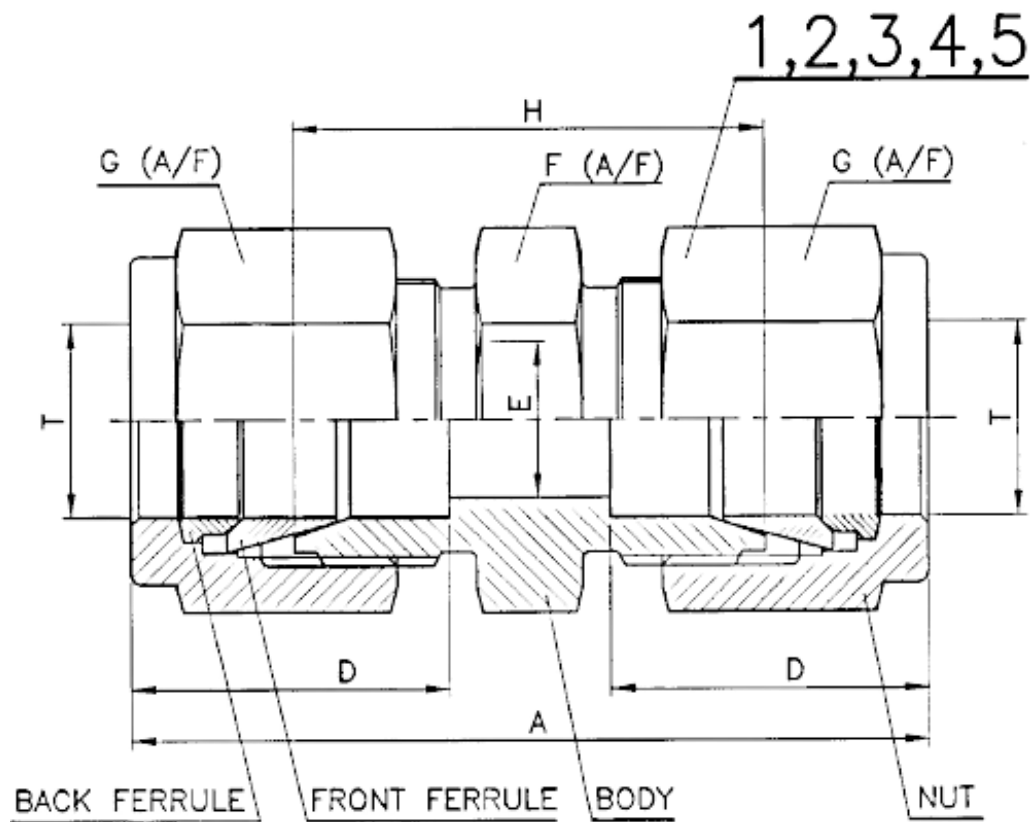


# MACHINERY: CNC Machining yard

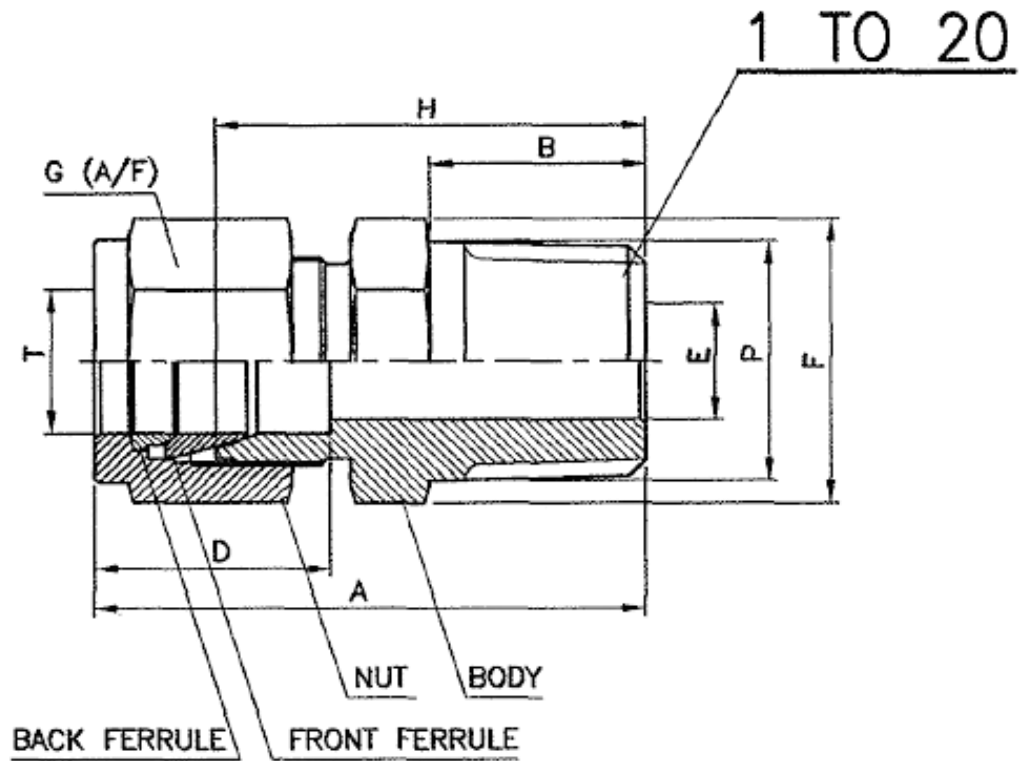




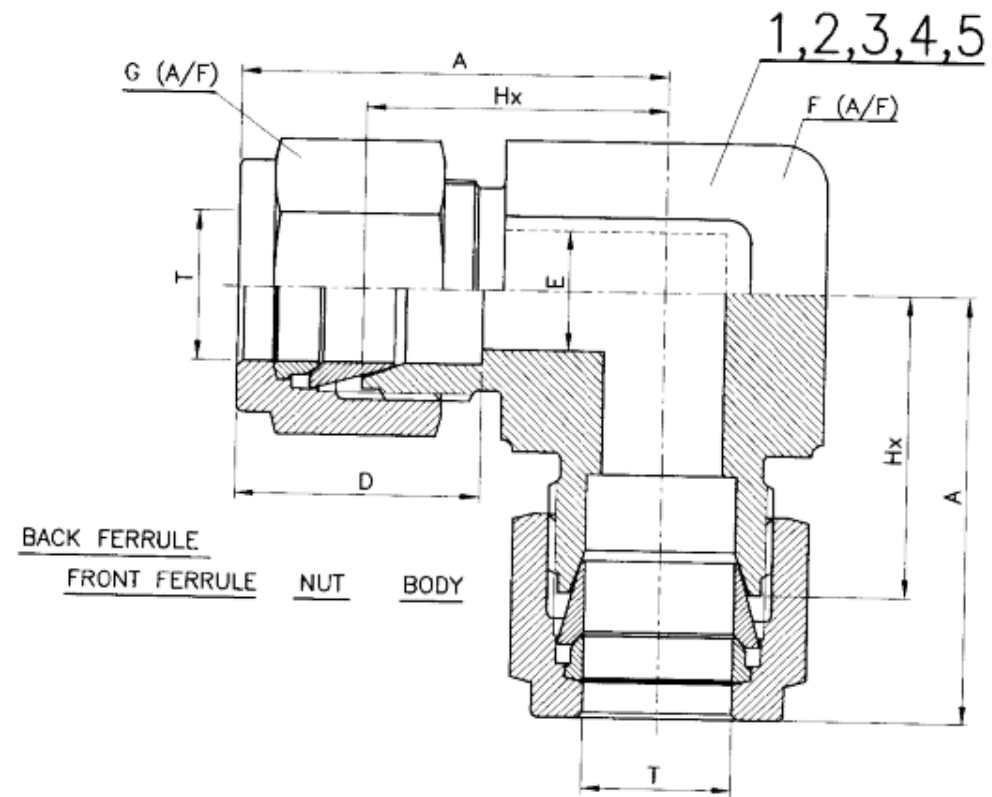
# **DOUBLE FERRULE FITTINGS**



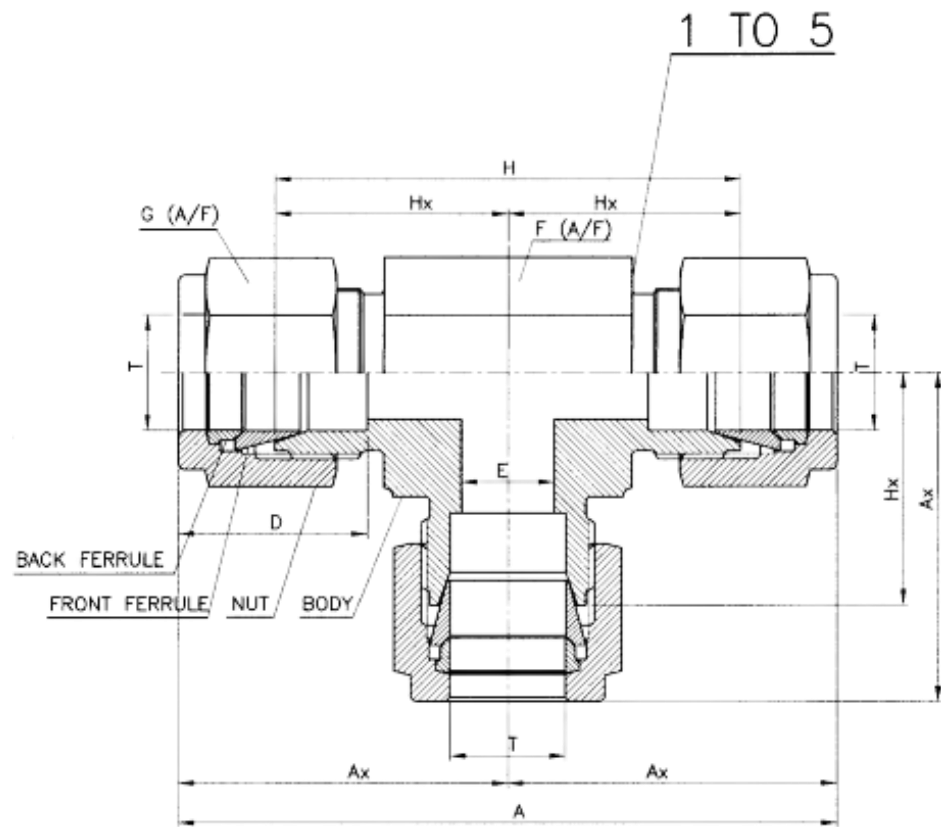
# EQUAL UNION



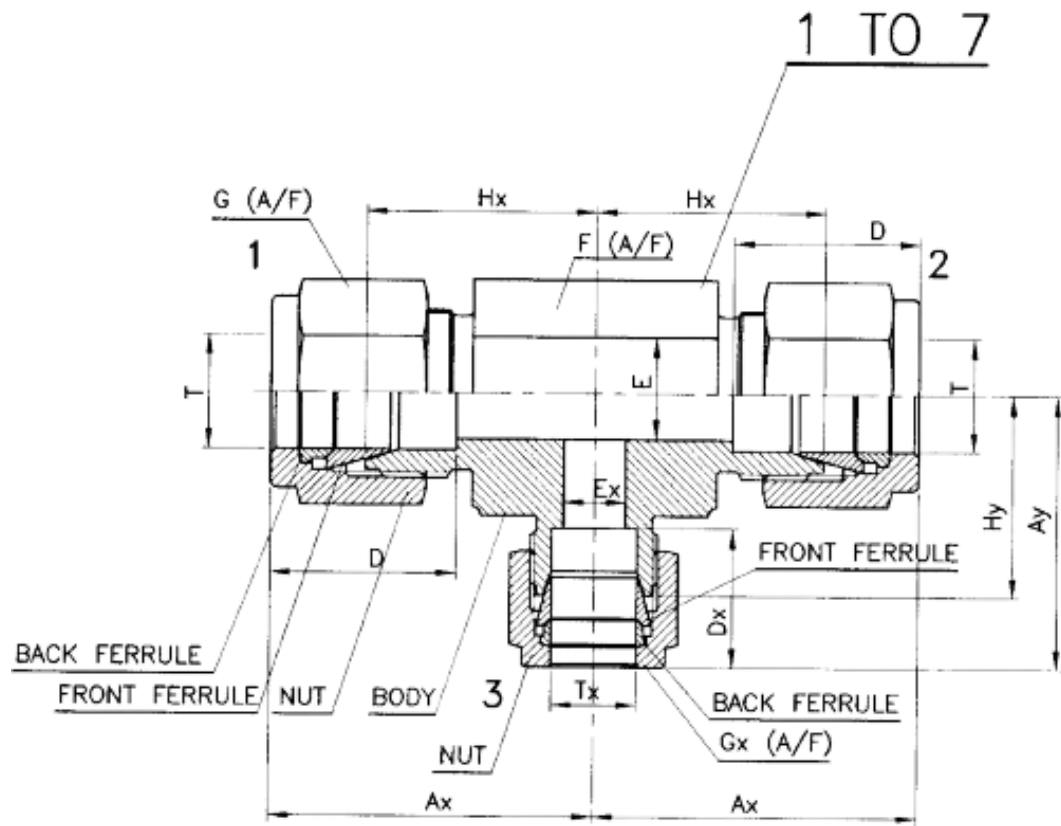
# Male Connector



# Union Elbow

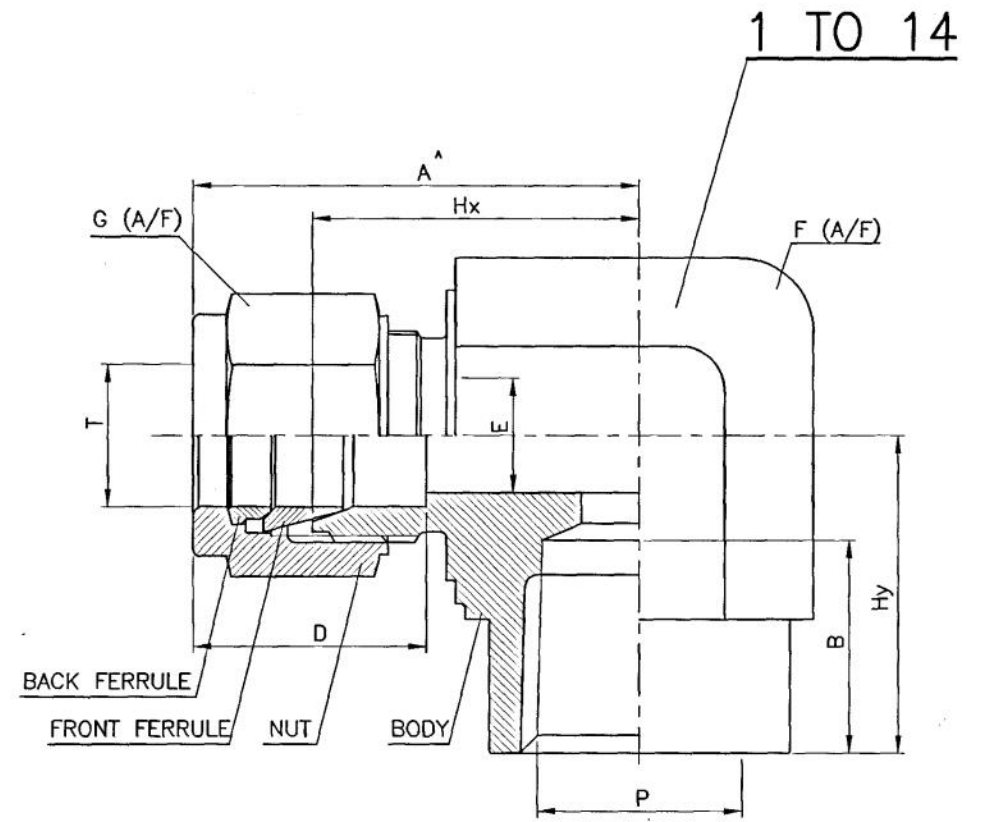


# Union Tee

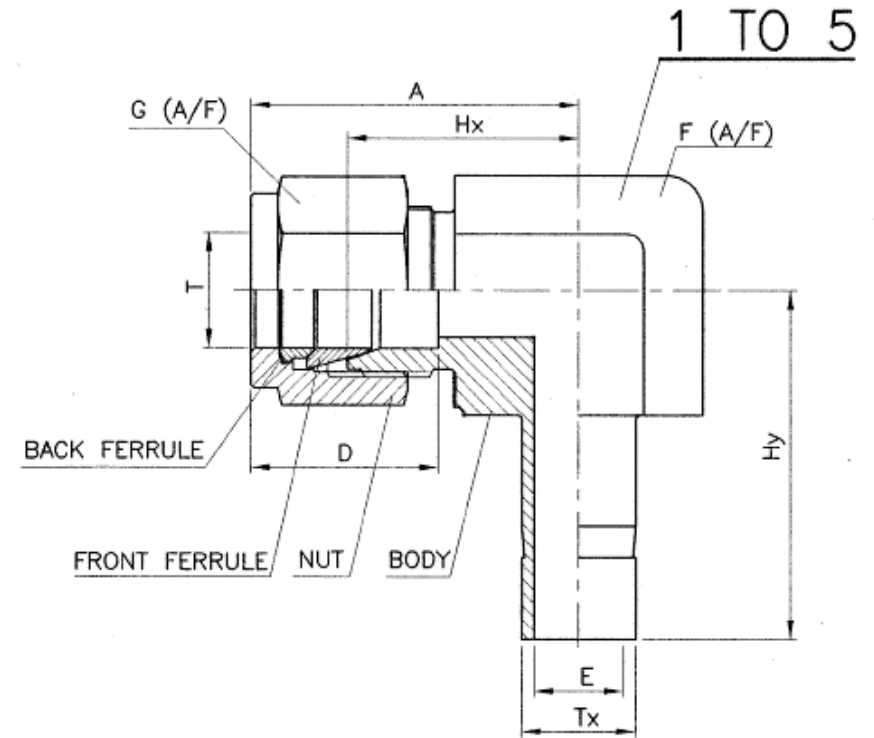


# Reducing Union Tee

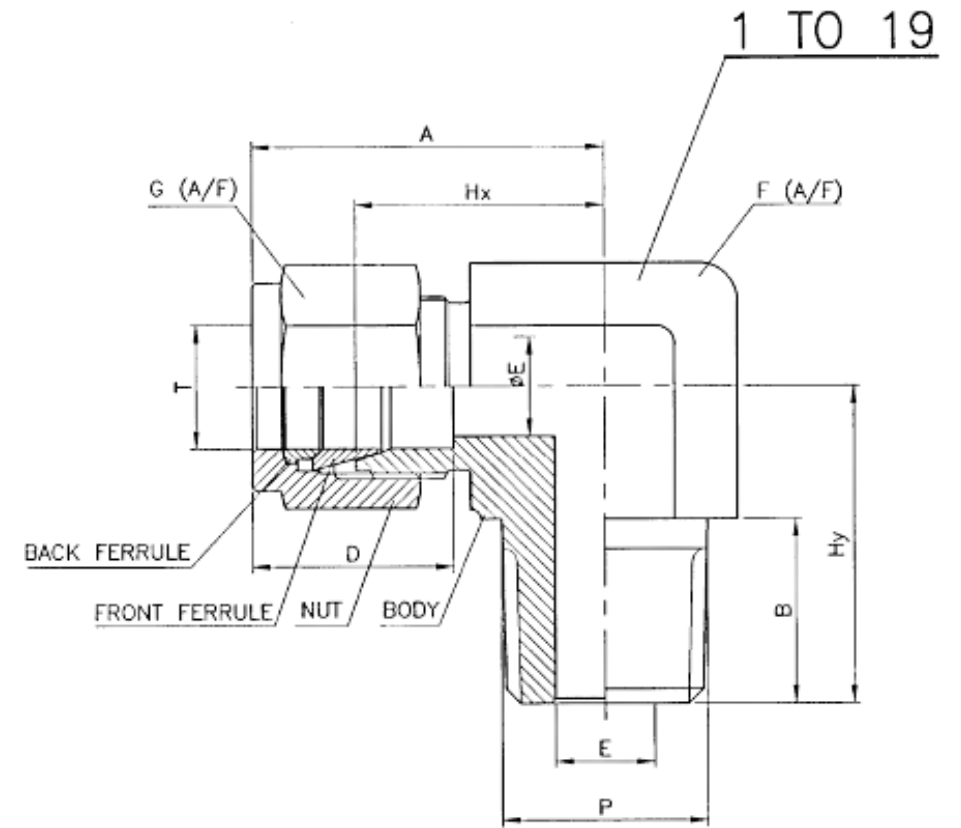




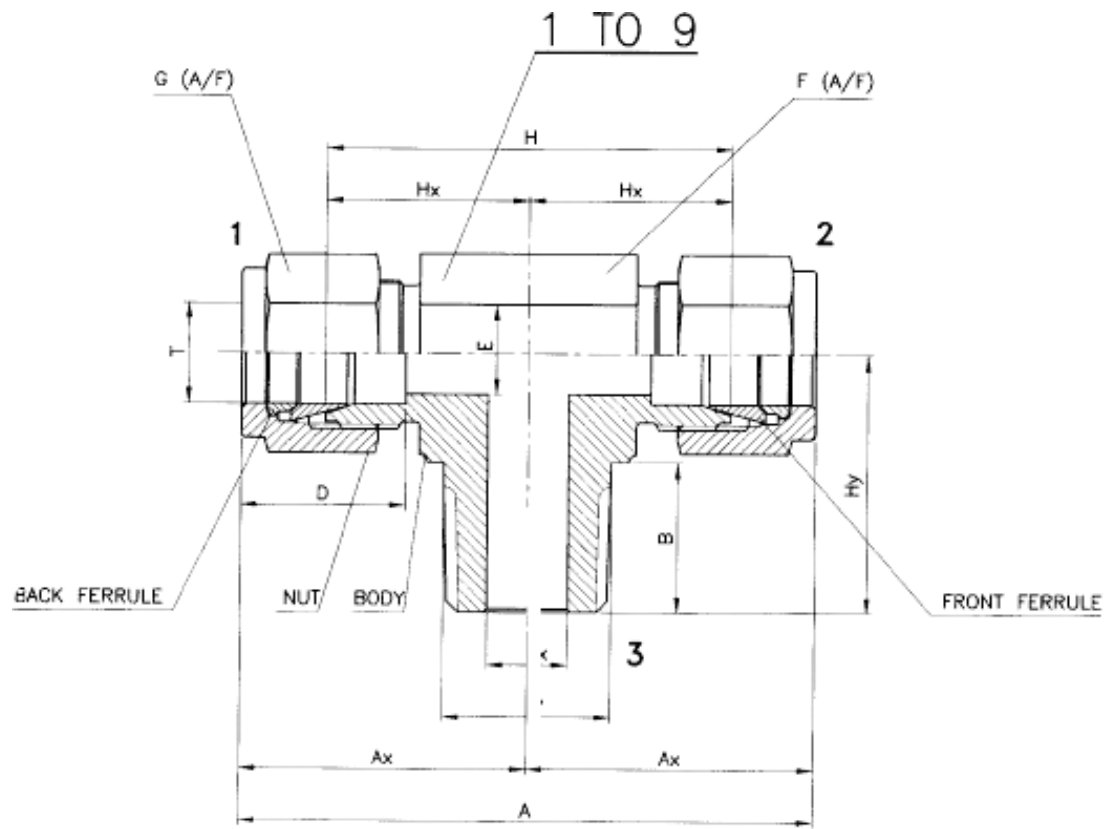
# Female Elbow



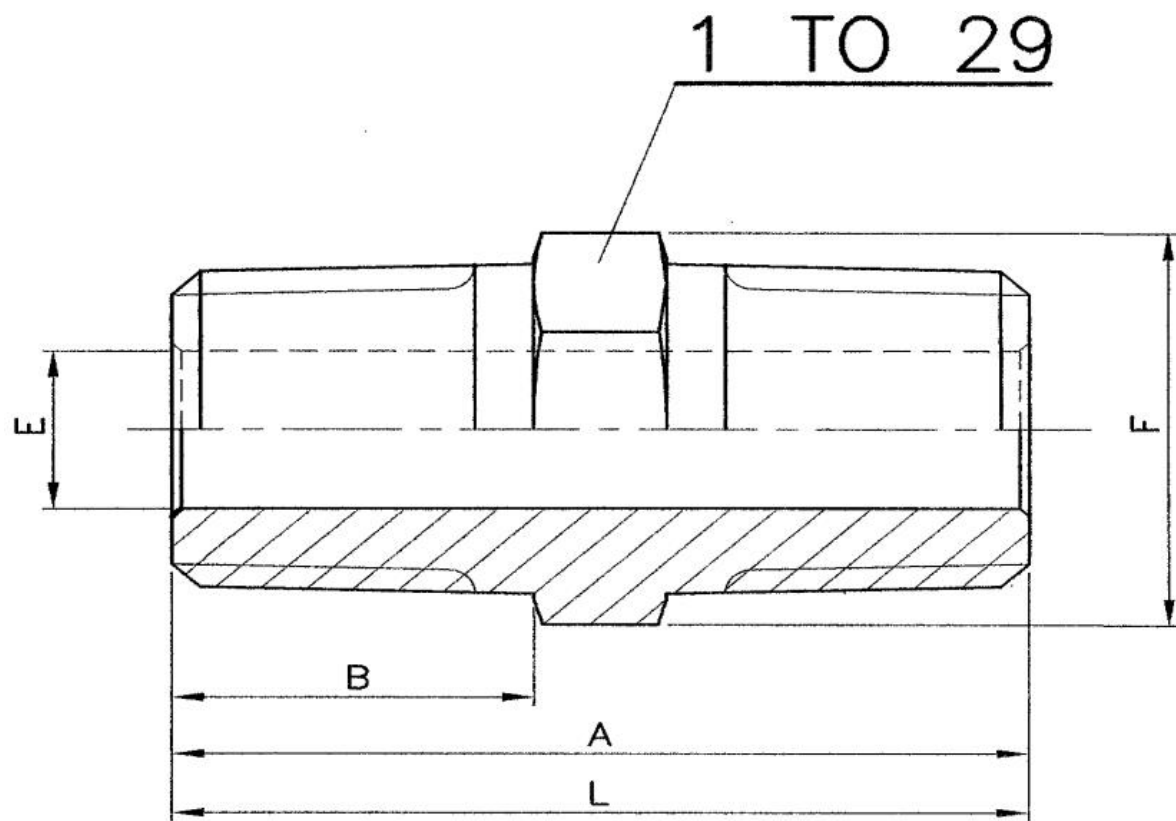
# Swivel Elbow



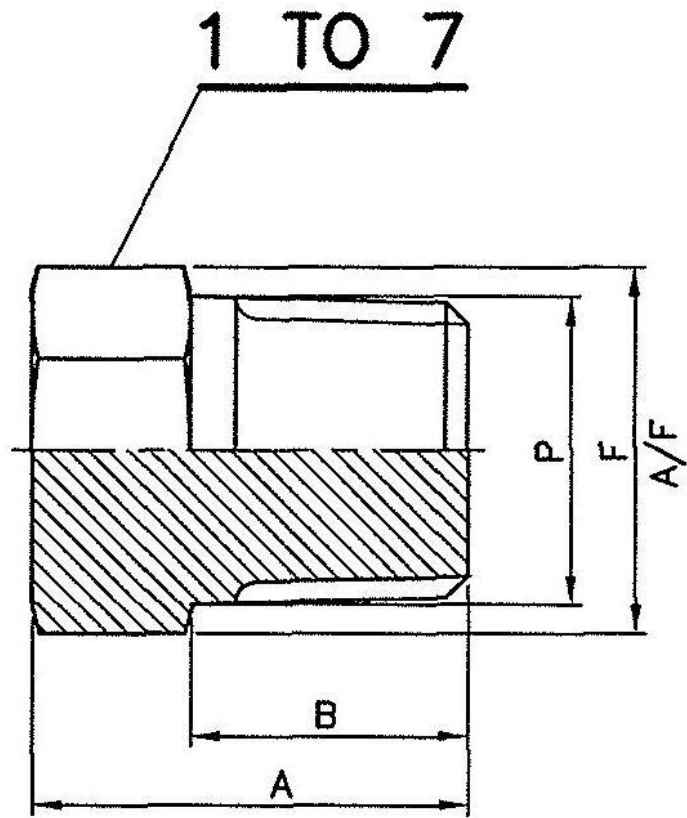
# Male Elbow



# Male Branch Tee



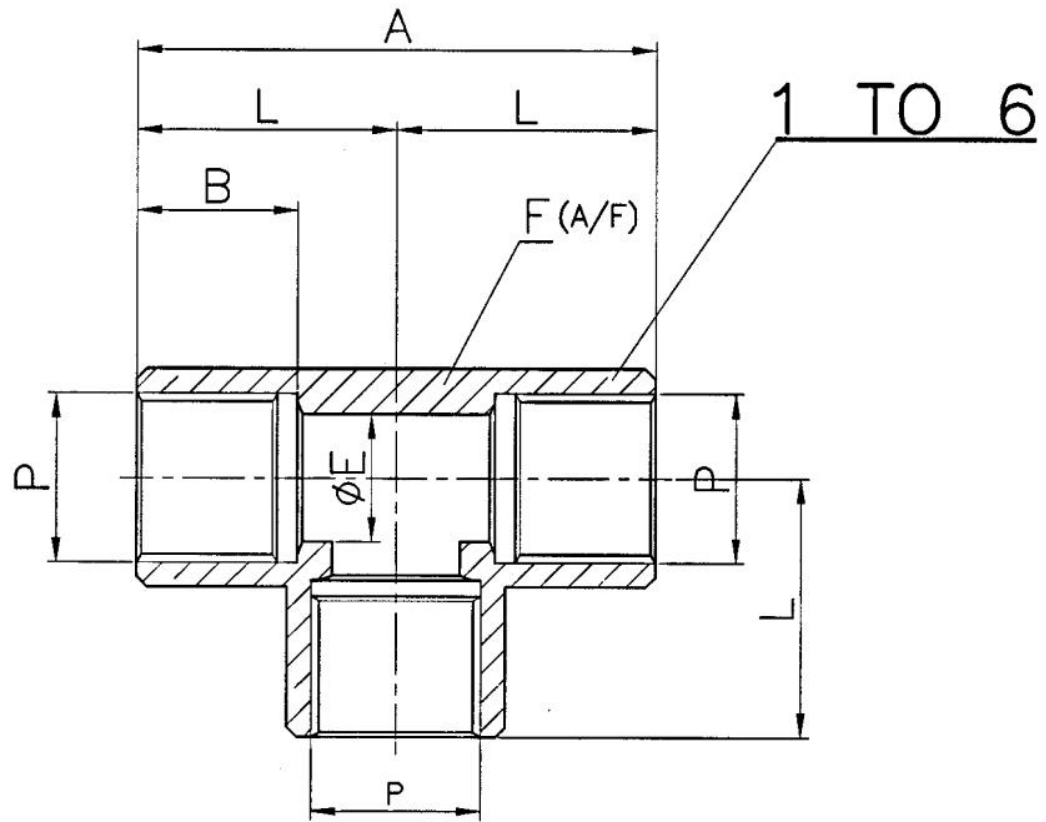
# Hex Nipples



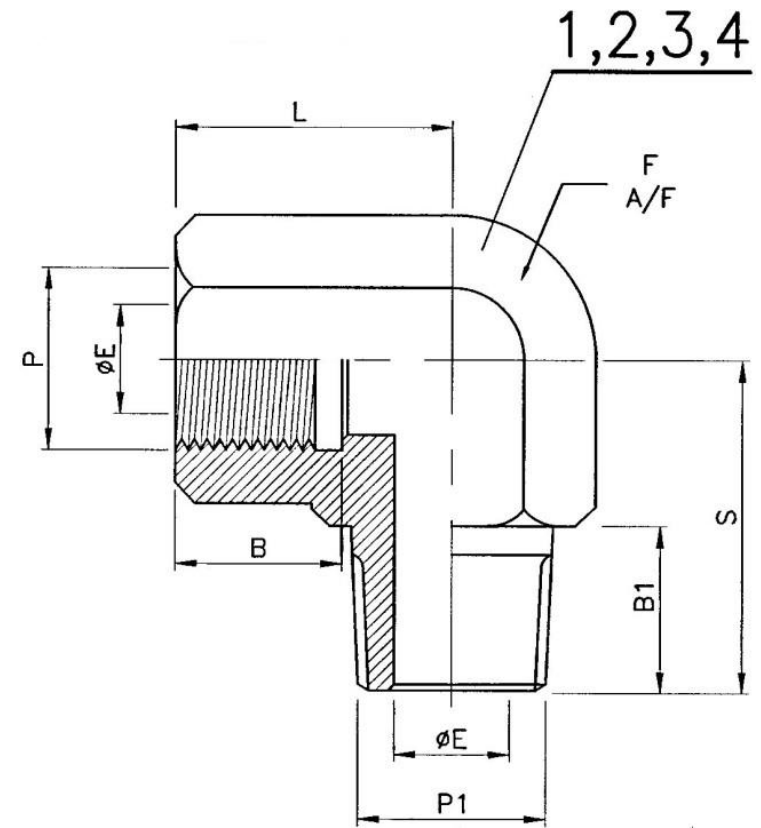
# Hex Plug

---

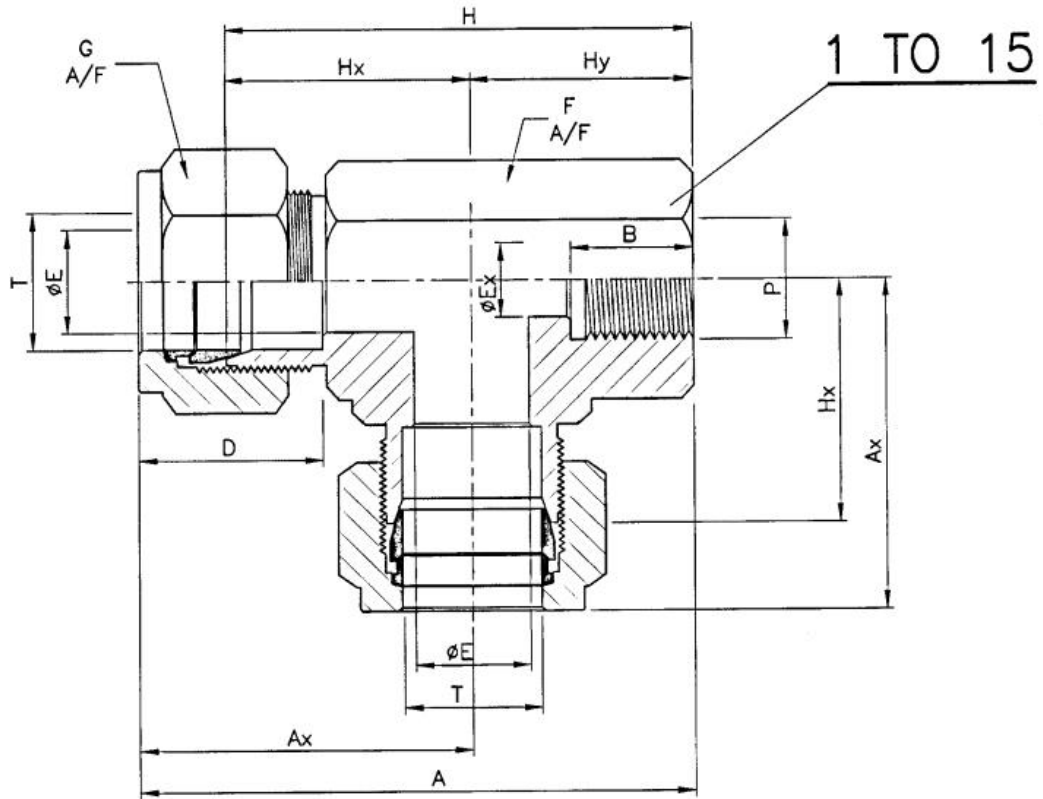




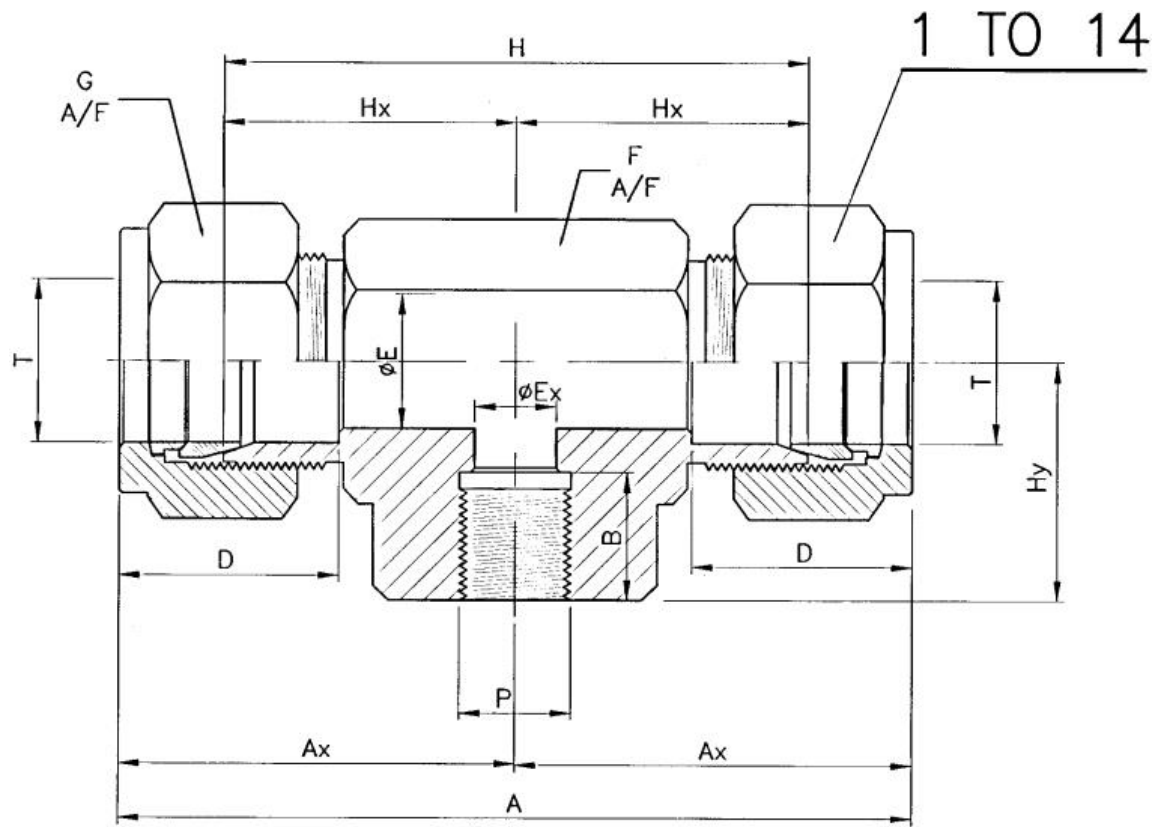
# Female Tee



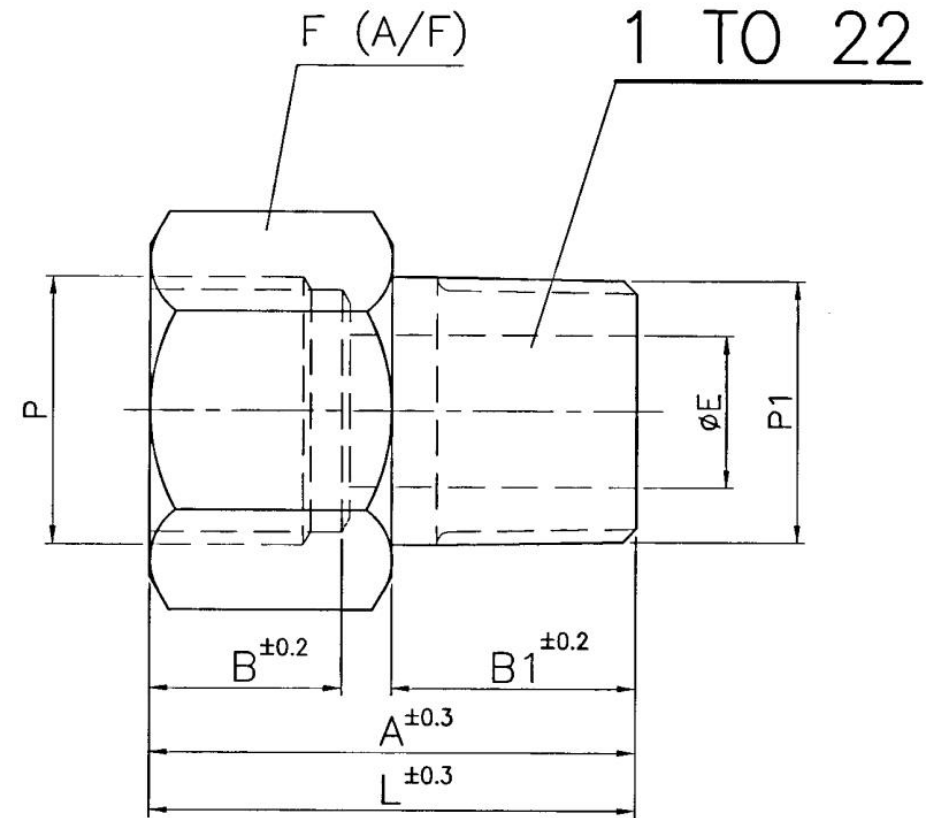
# Street Elbow



# Female Run Tee

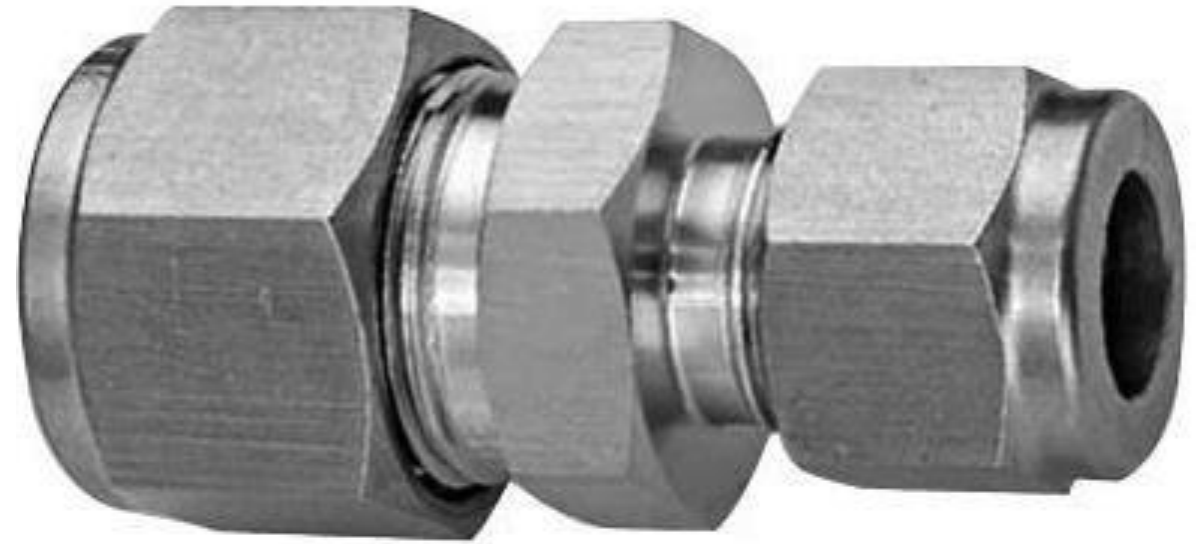
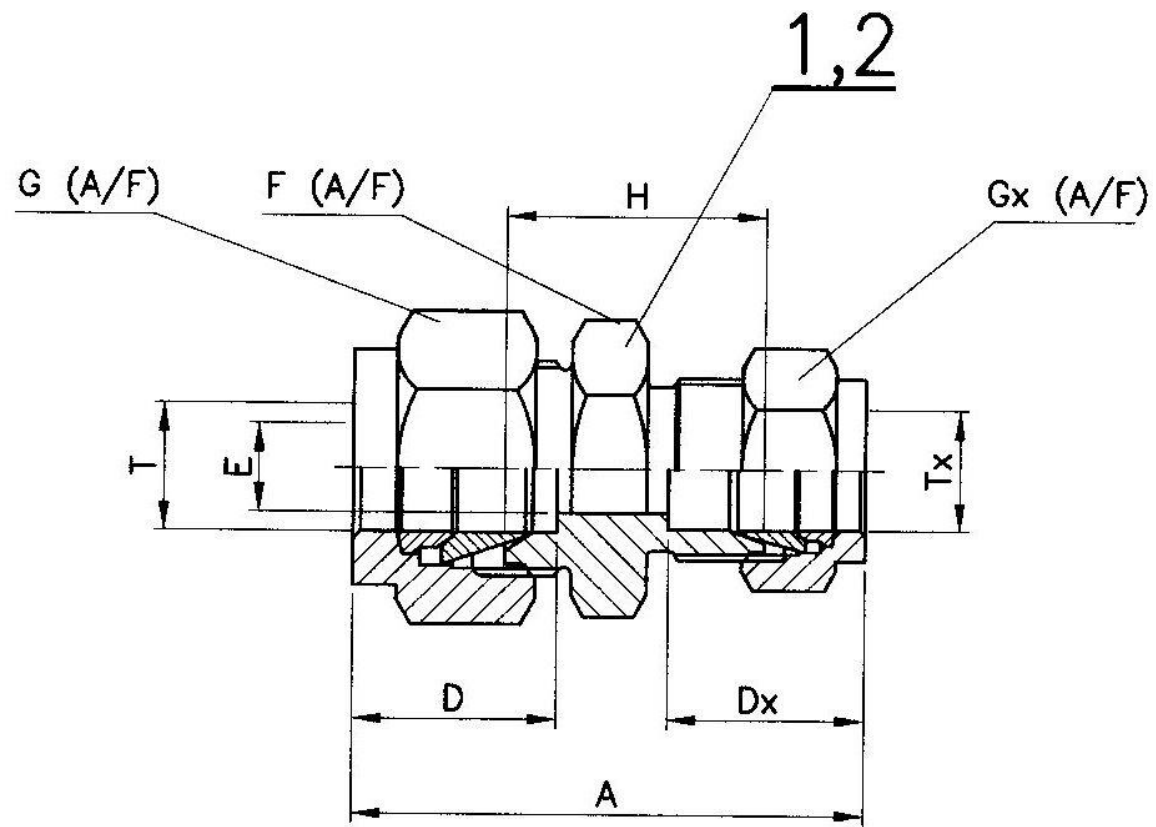


# Female Branch Tee



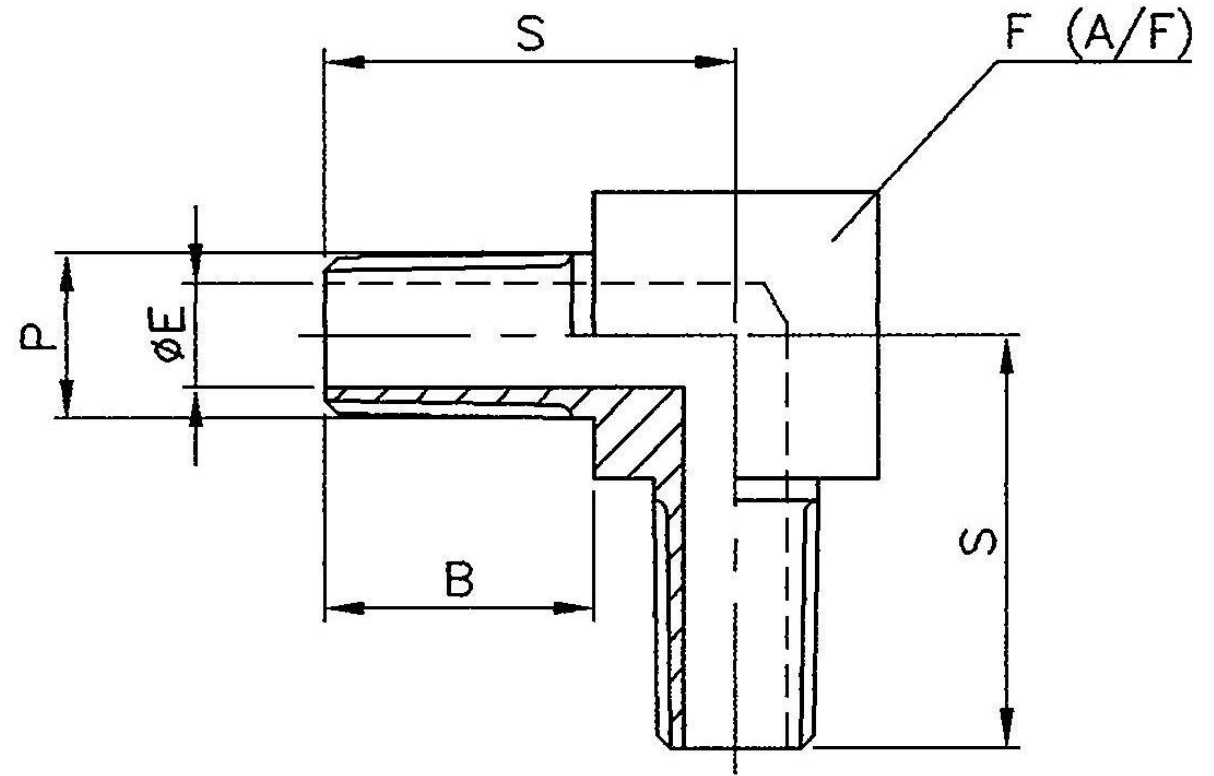
# Reducing Bush



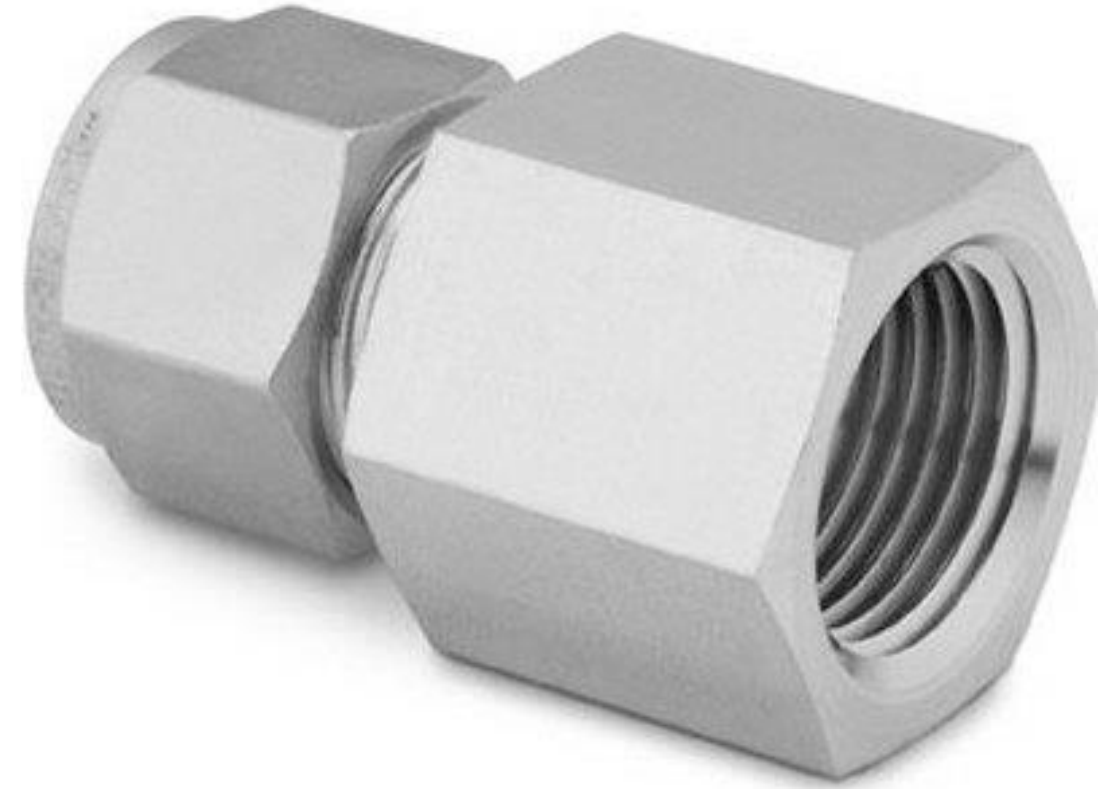
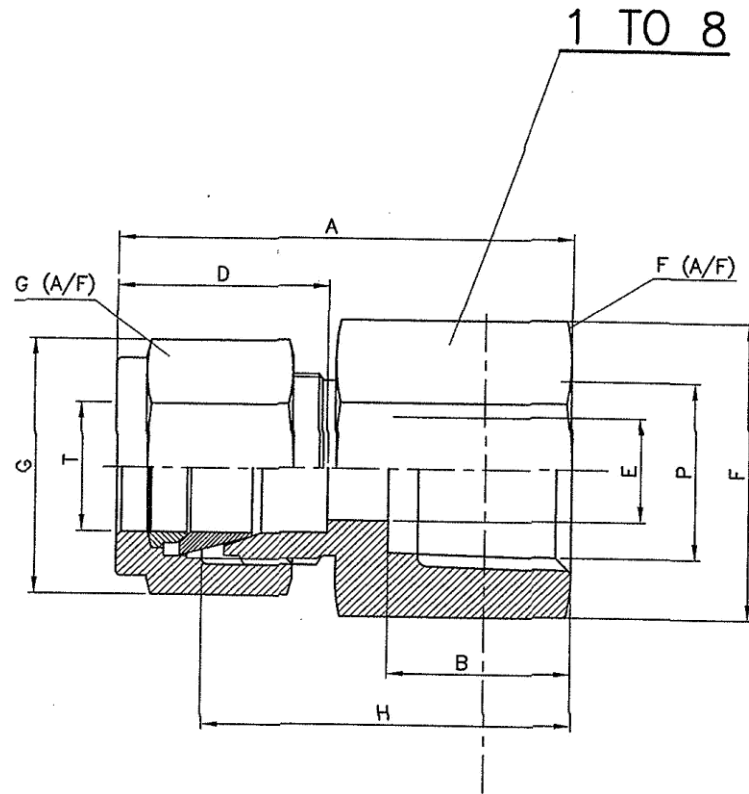


# Reducing Union

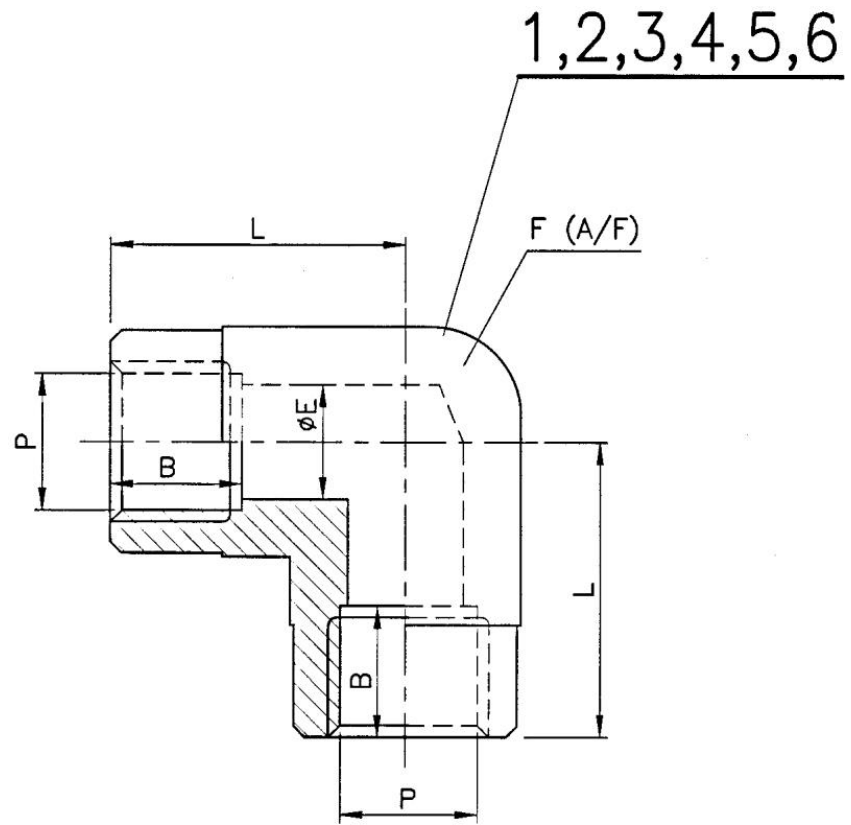




# Male Elbow

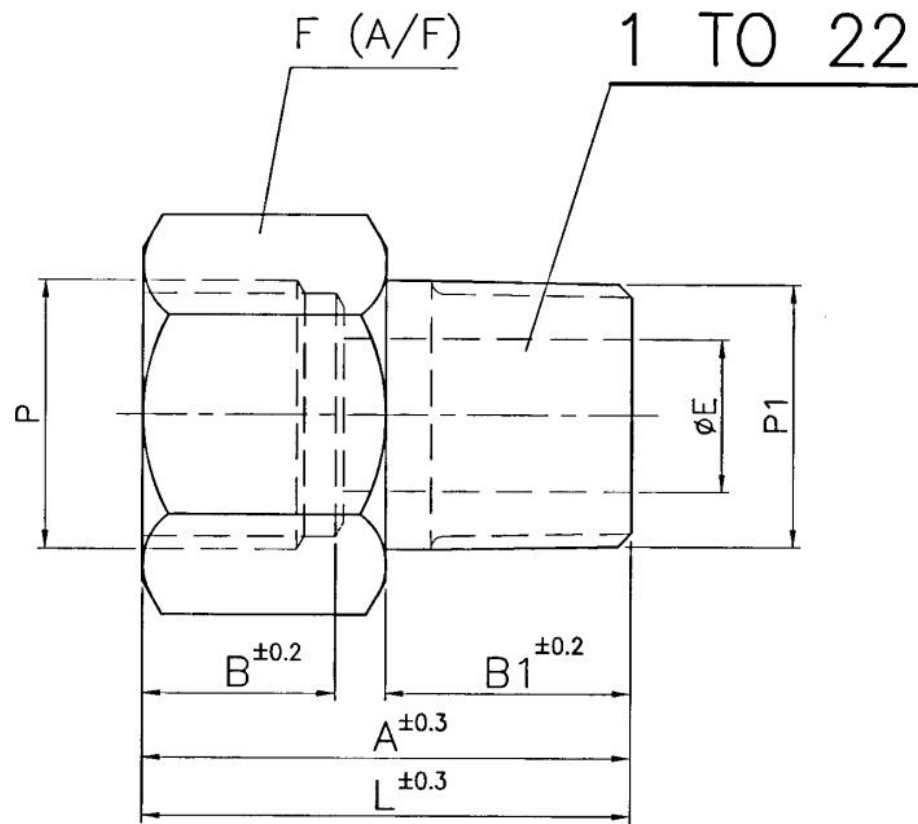


# Female Connector

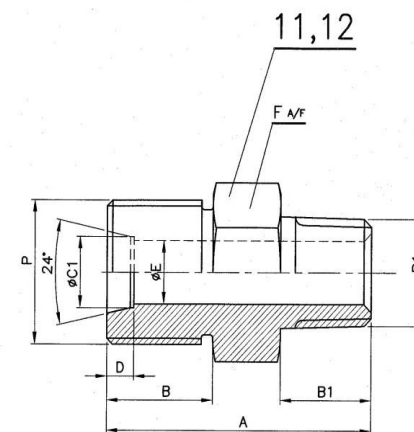
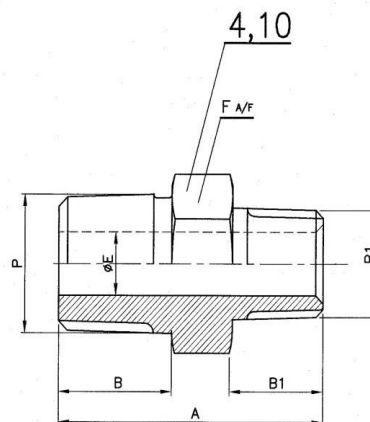
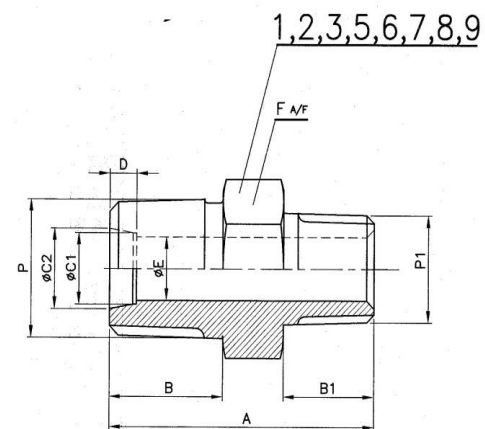
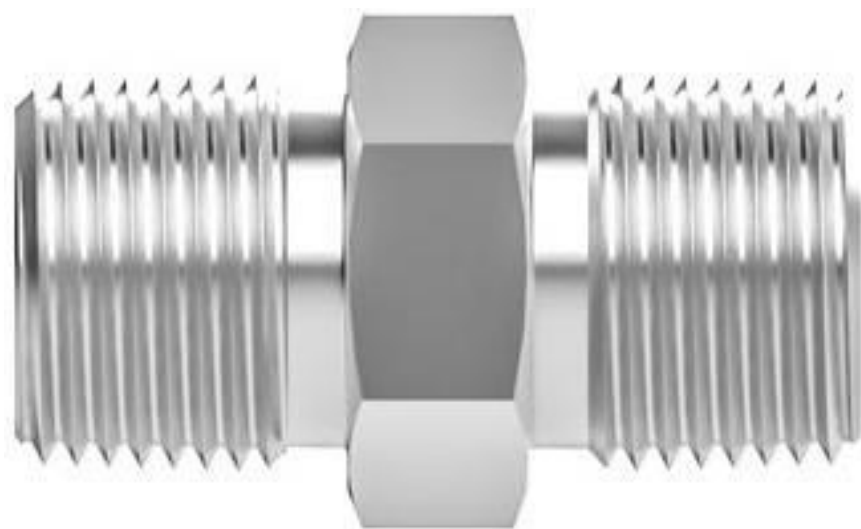


# Female Elbow

---



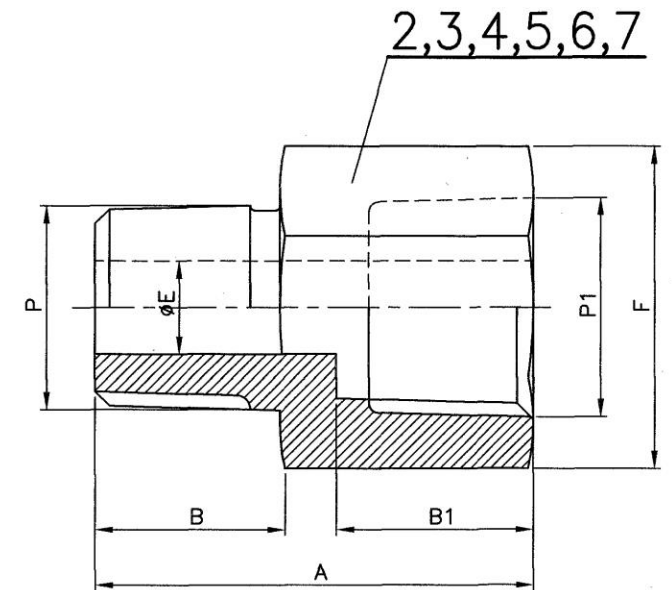
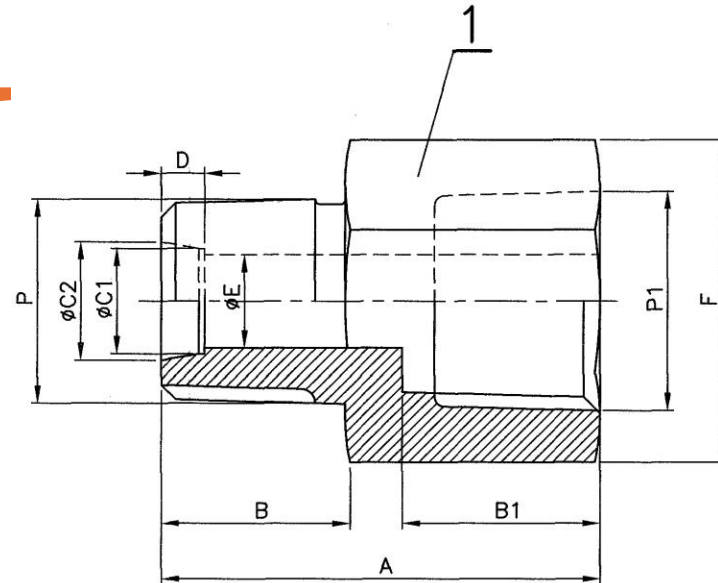
# Reducing Adaptor

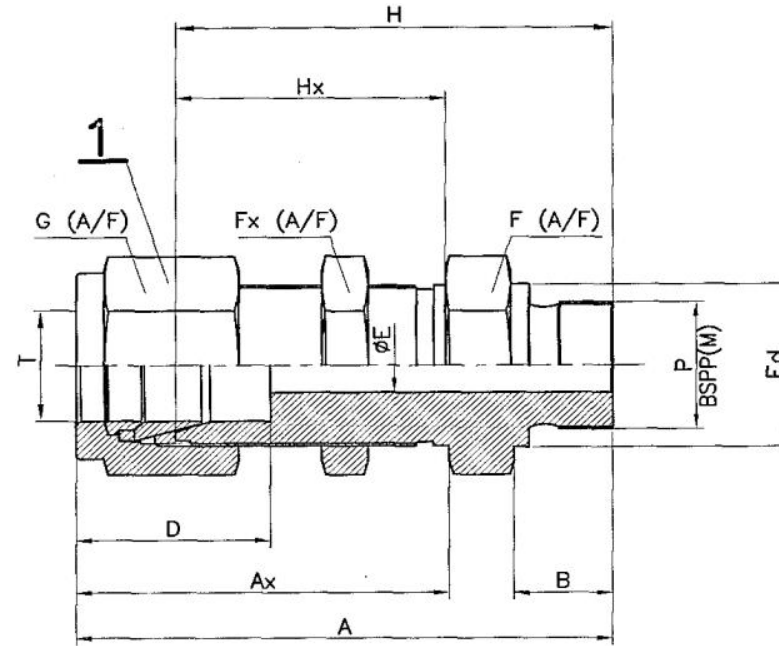
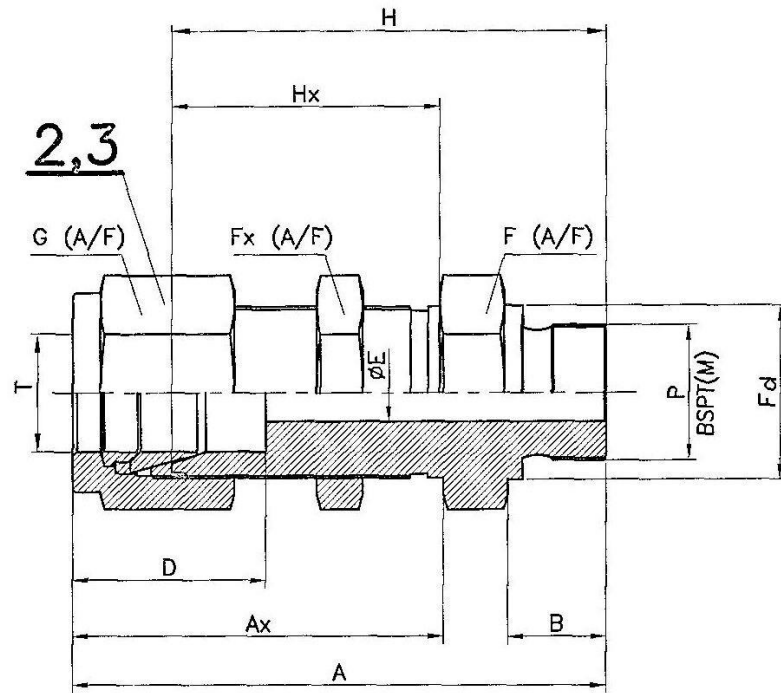


# Special Adaptor

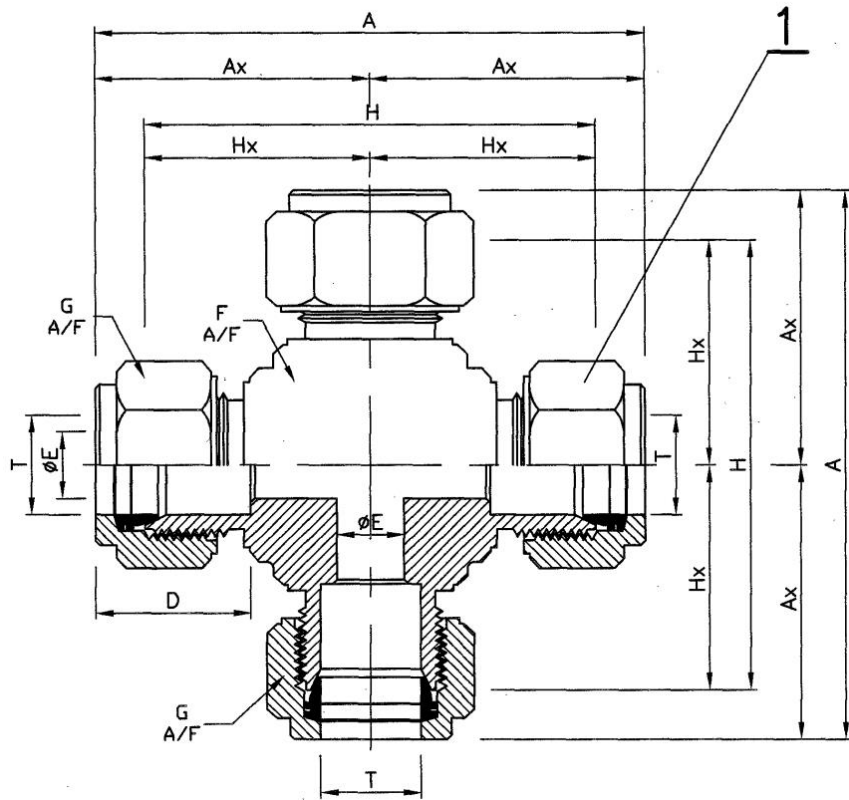


# Female Special Adaptor



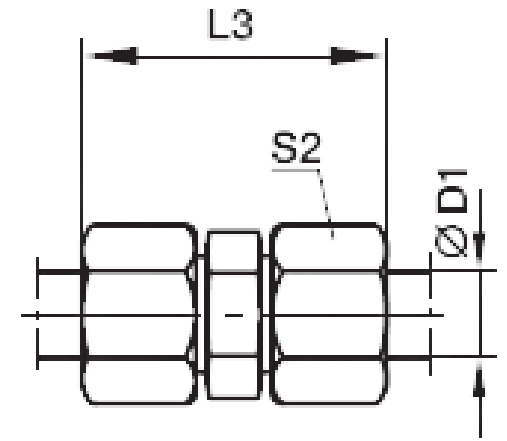
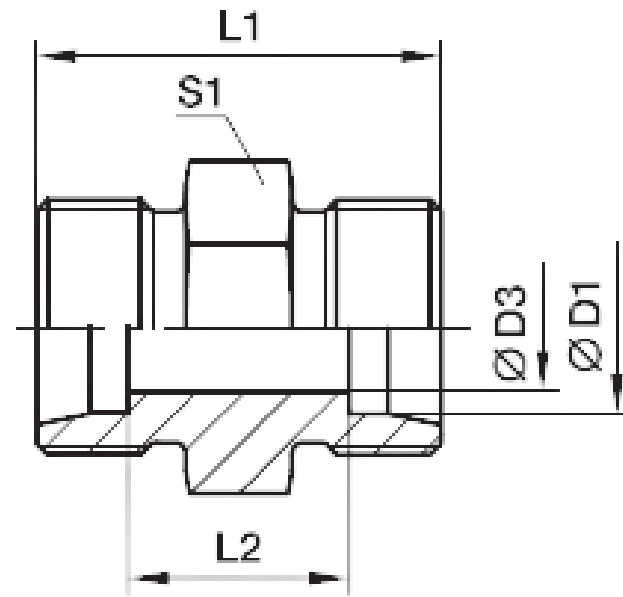


# Bulk Head Male Connector



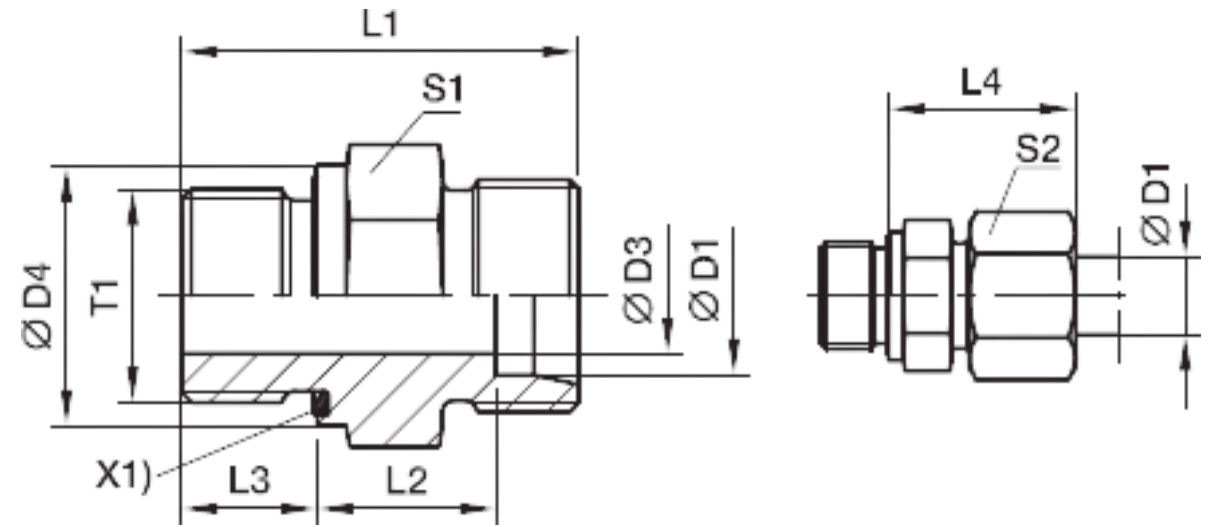
# Cross Union

# **SINGLE FERRULE FITTINGS**

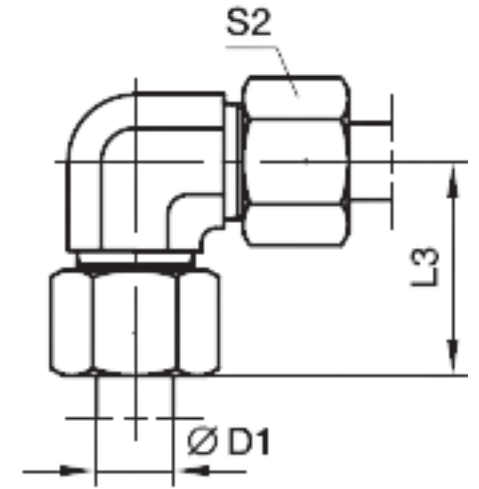
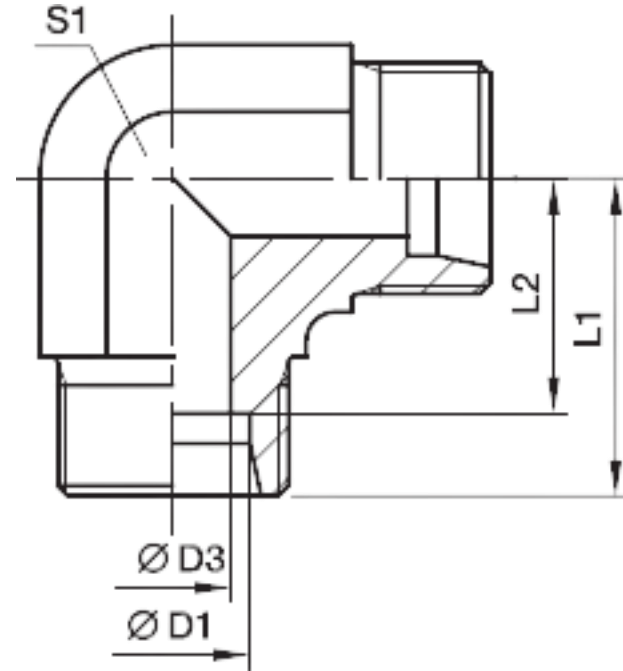


# Union 'L'





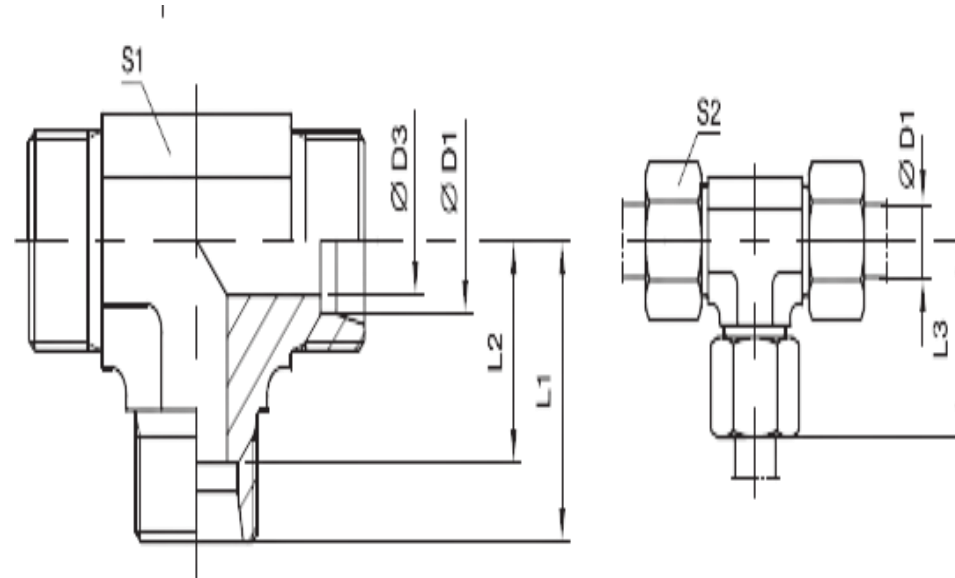
# Male Stud Connector

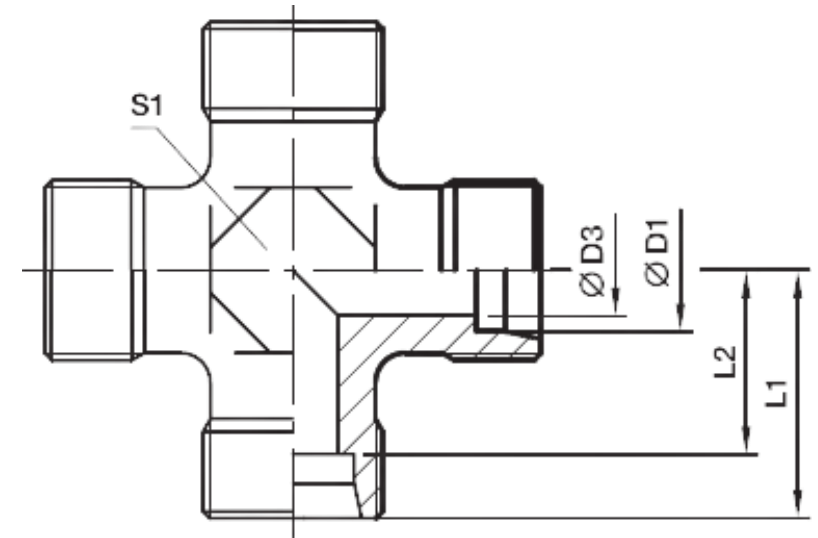
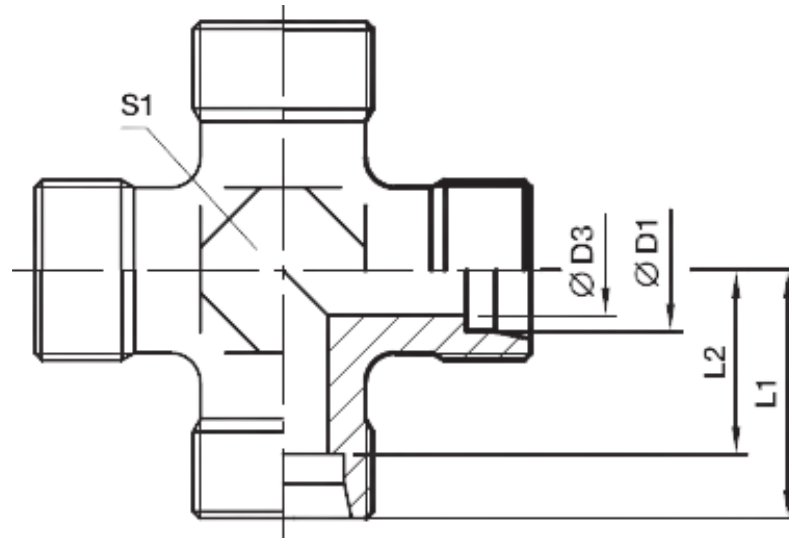


# Union Elbow

# Union Tee

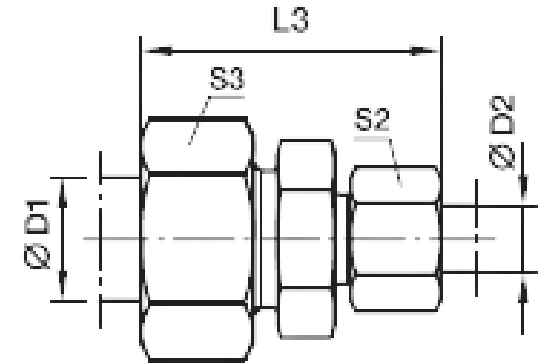
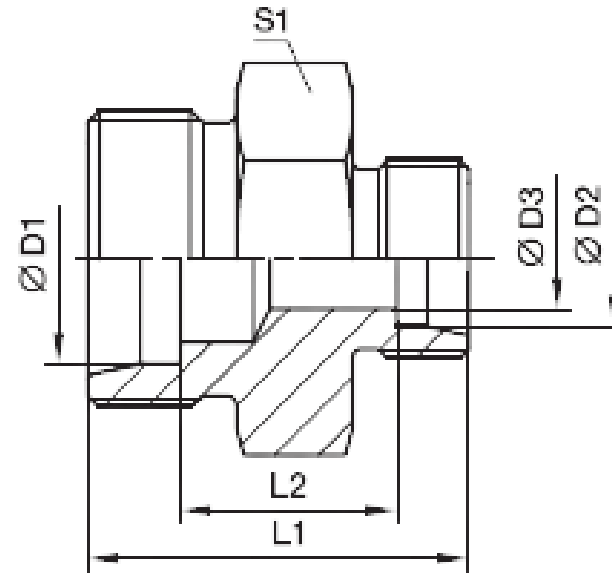
---





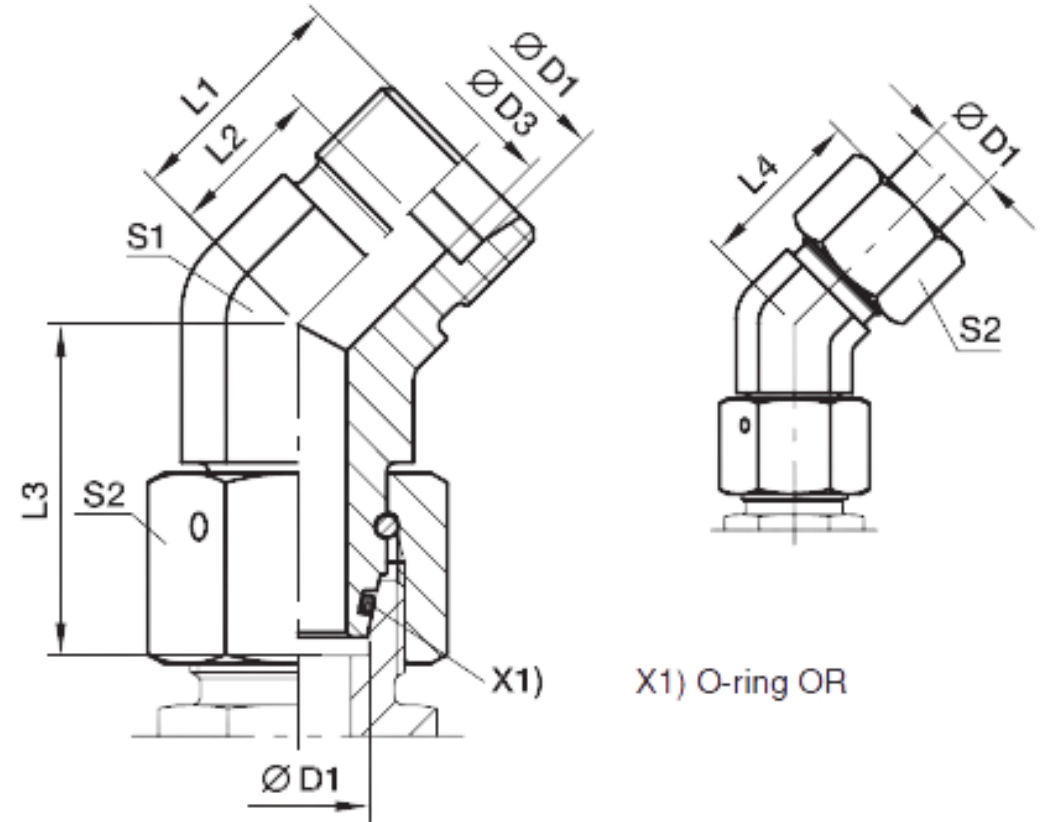
# Cross Union

---

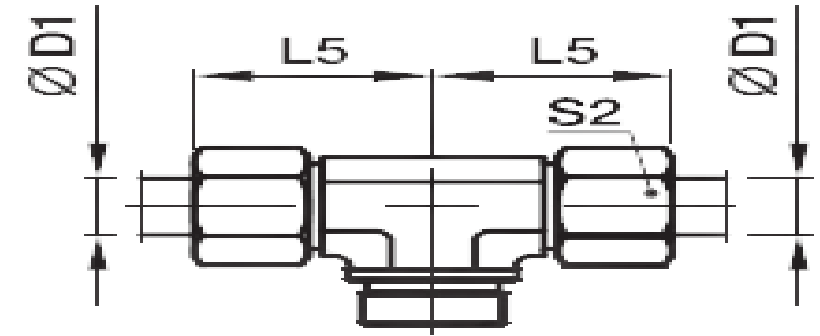
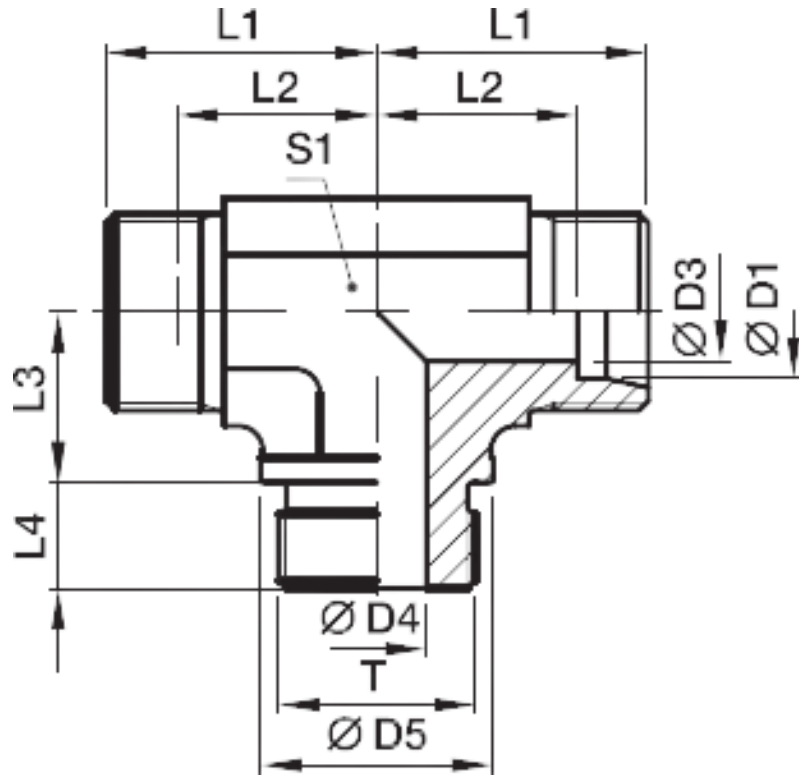


# Straight Reducer

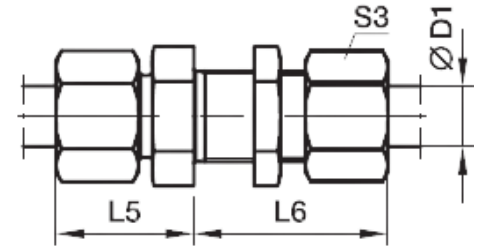
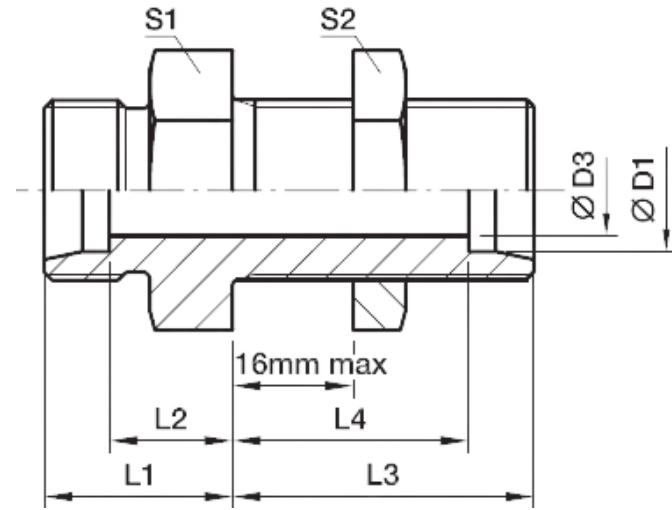




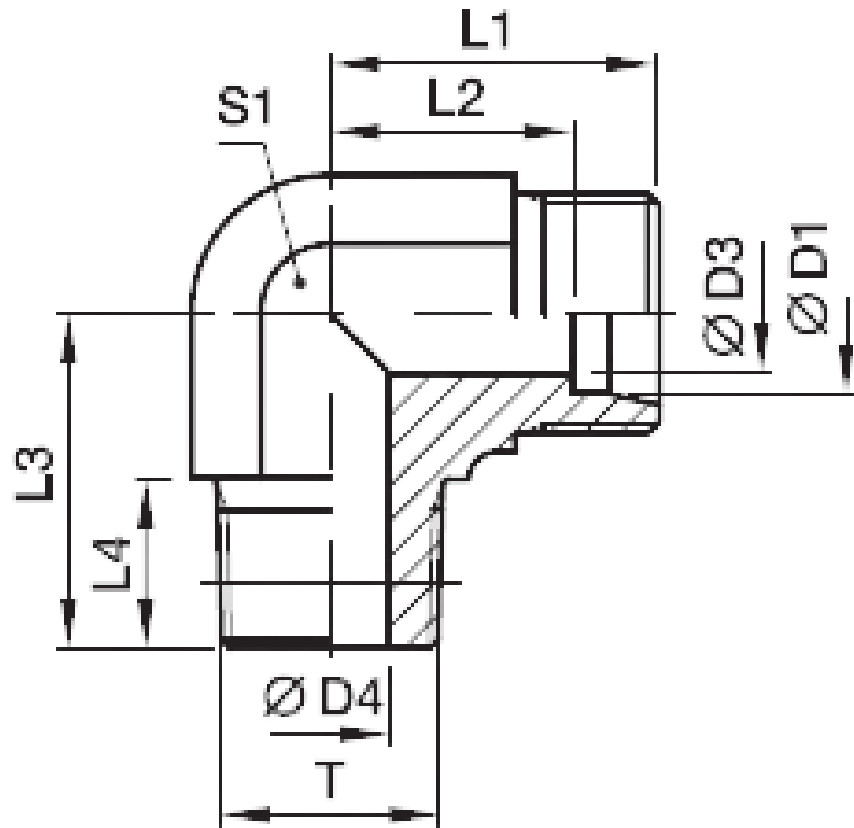
# 45°Cone End Elbow



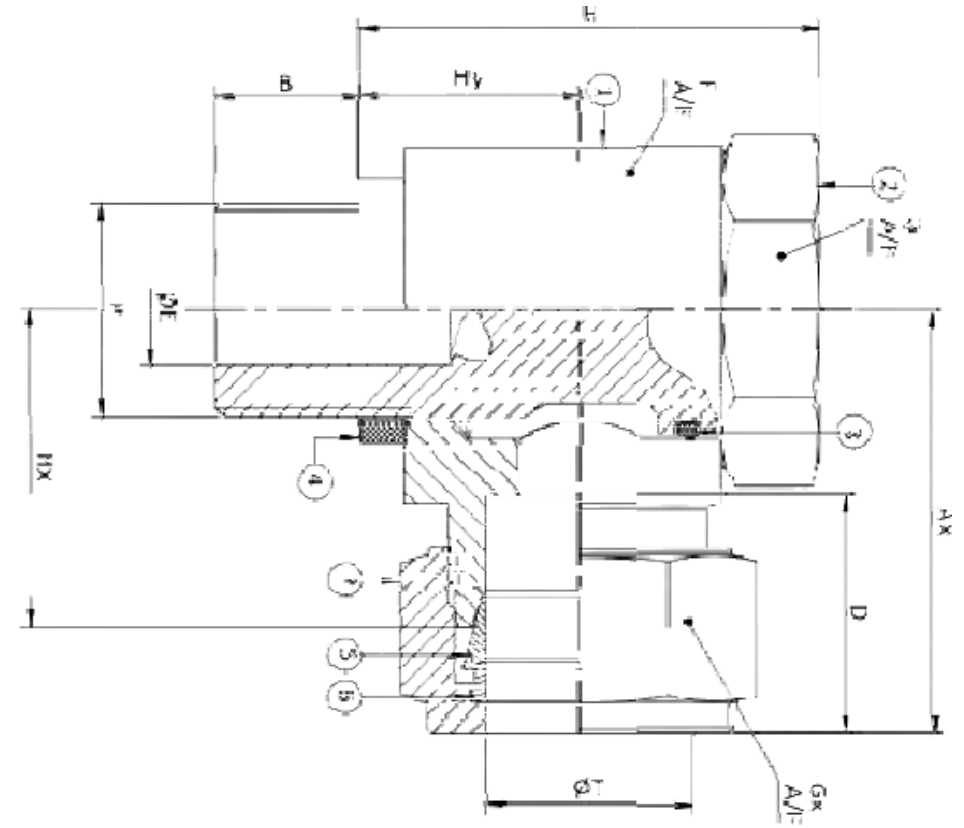
# Reducing Union Branch Tee



# Bulkhead Union

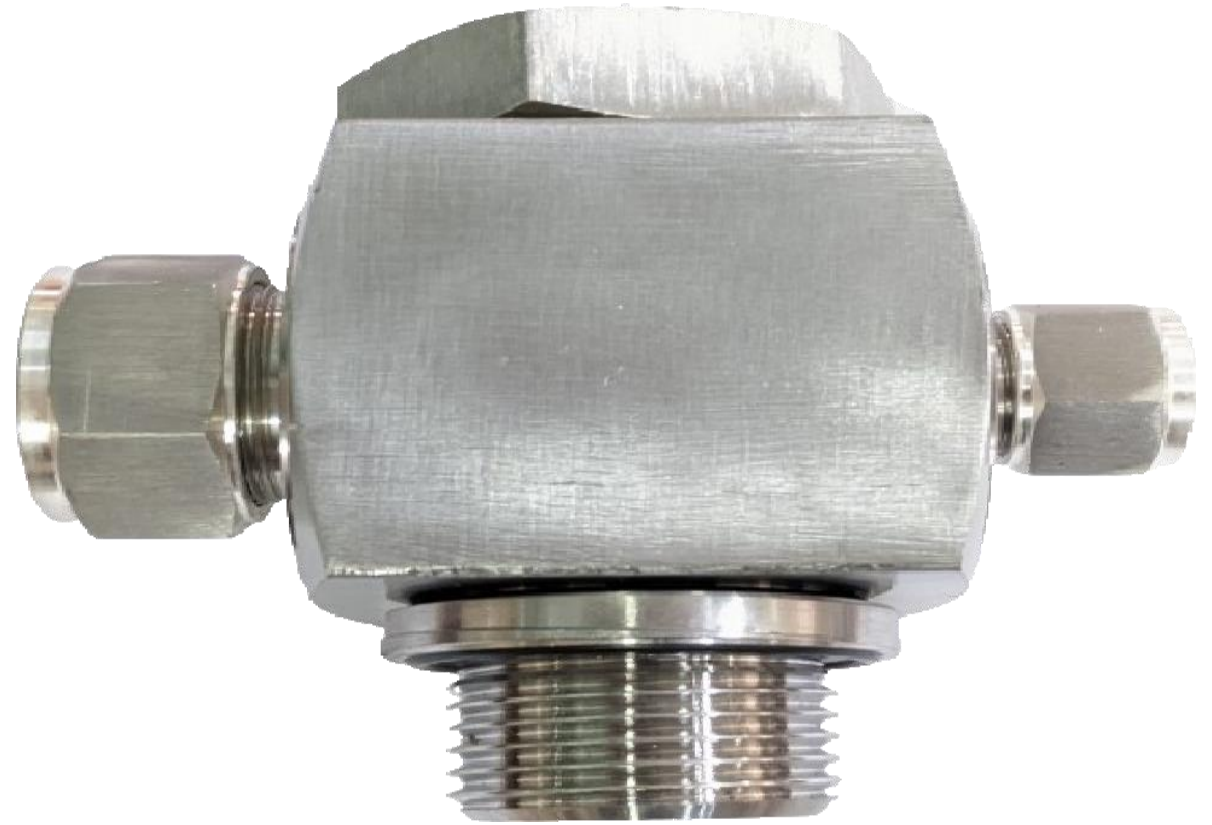
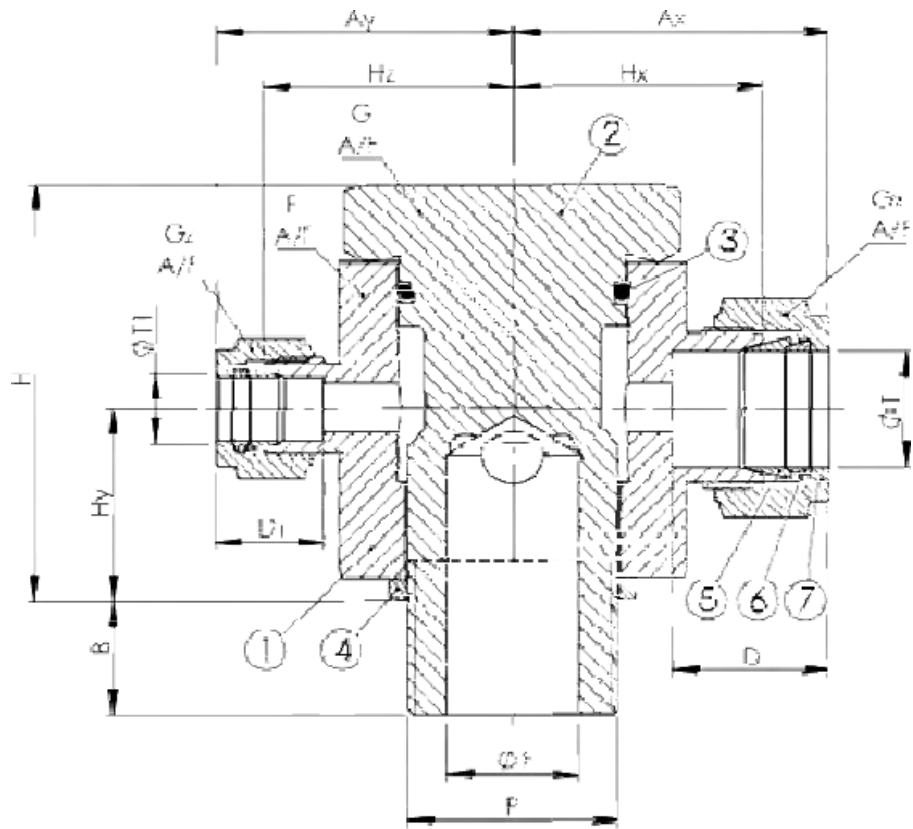


# Male Elbow

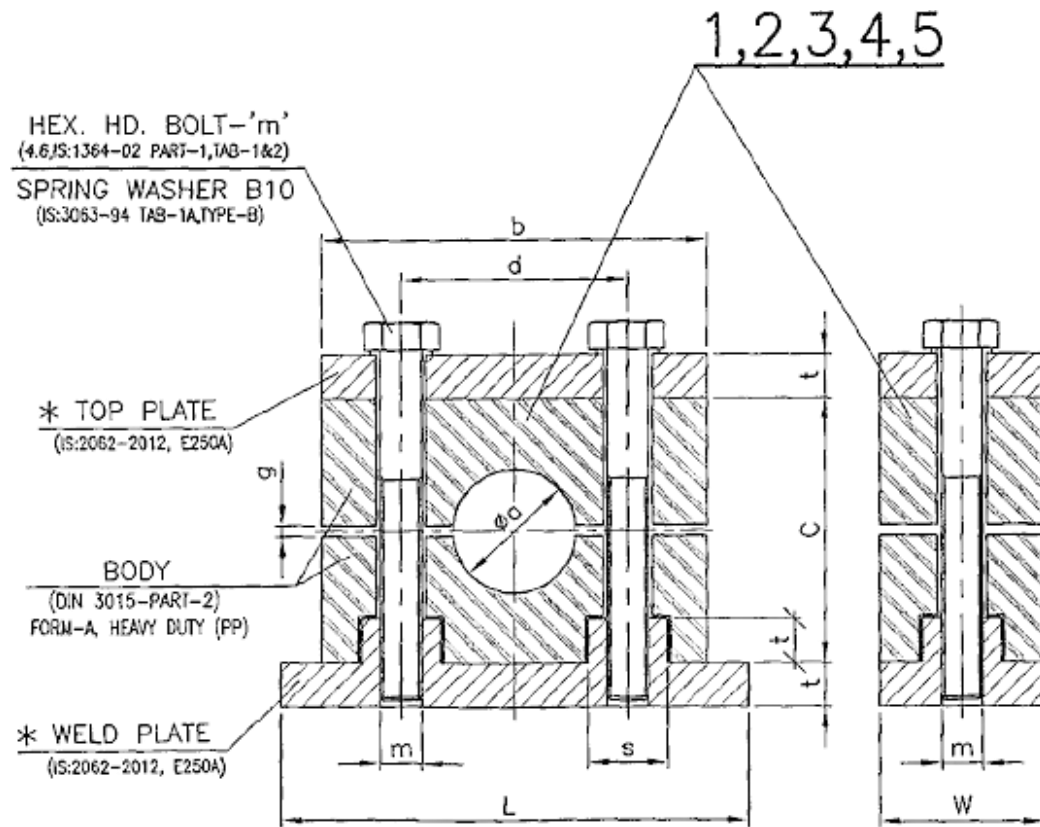


# Banjo Elbow Fitting

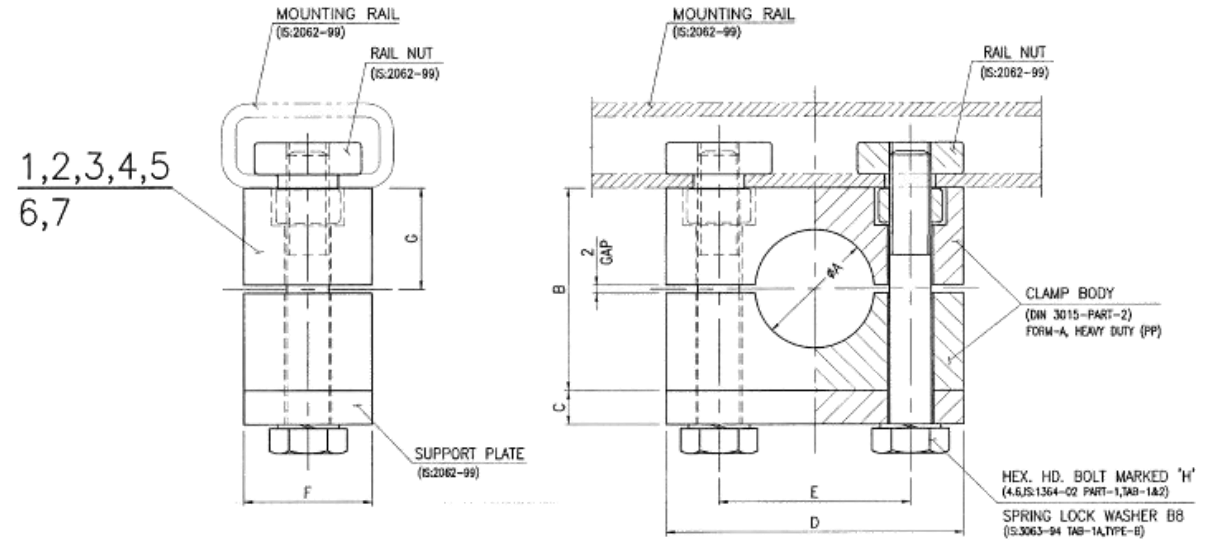




# Banjo Tee Fitting



# Pipe Clamp (Welded Plate Type)



# Pipe Clamp (Mounting Rail Type)

# SS PIPE CLIP

---

- 1/2"OD
- 3/4"OD
- 1"OD
- 28mm OD
- 1 1/4"OD
- 1 1/2"OD

