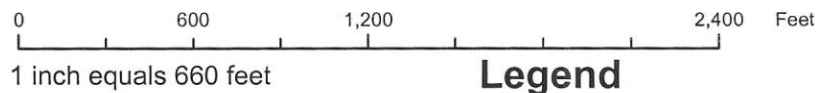
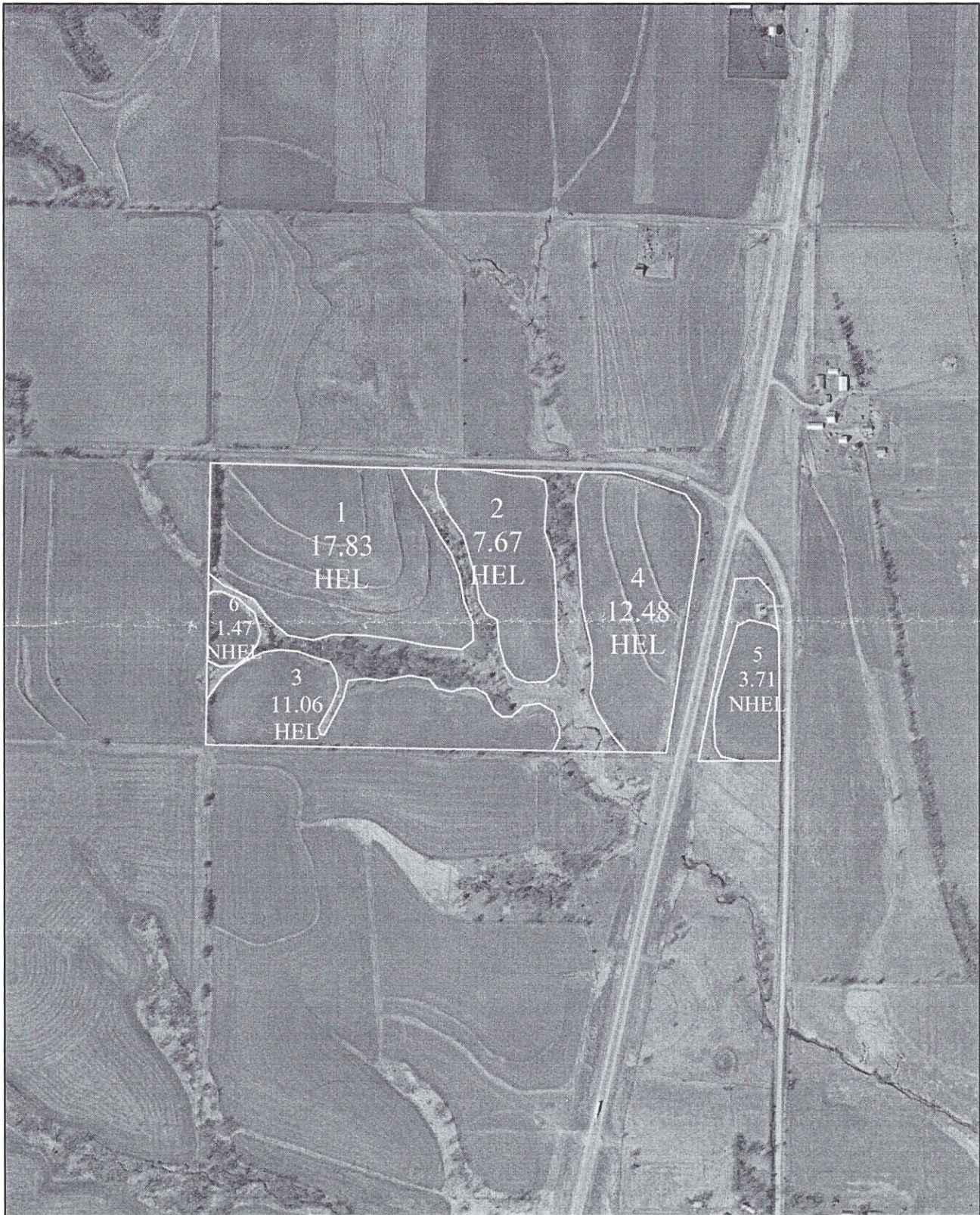


Farm# 1881  
Tract# 1568

Sec. 4  
Twp. Douglas



**Legend**

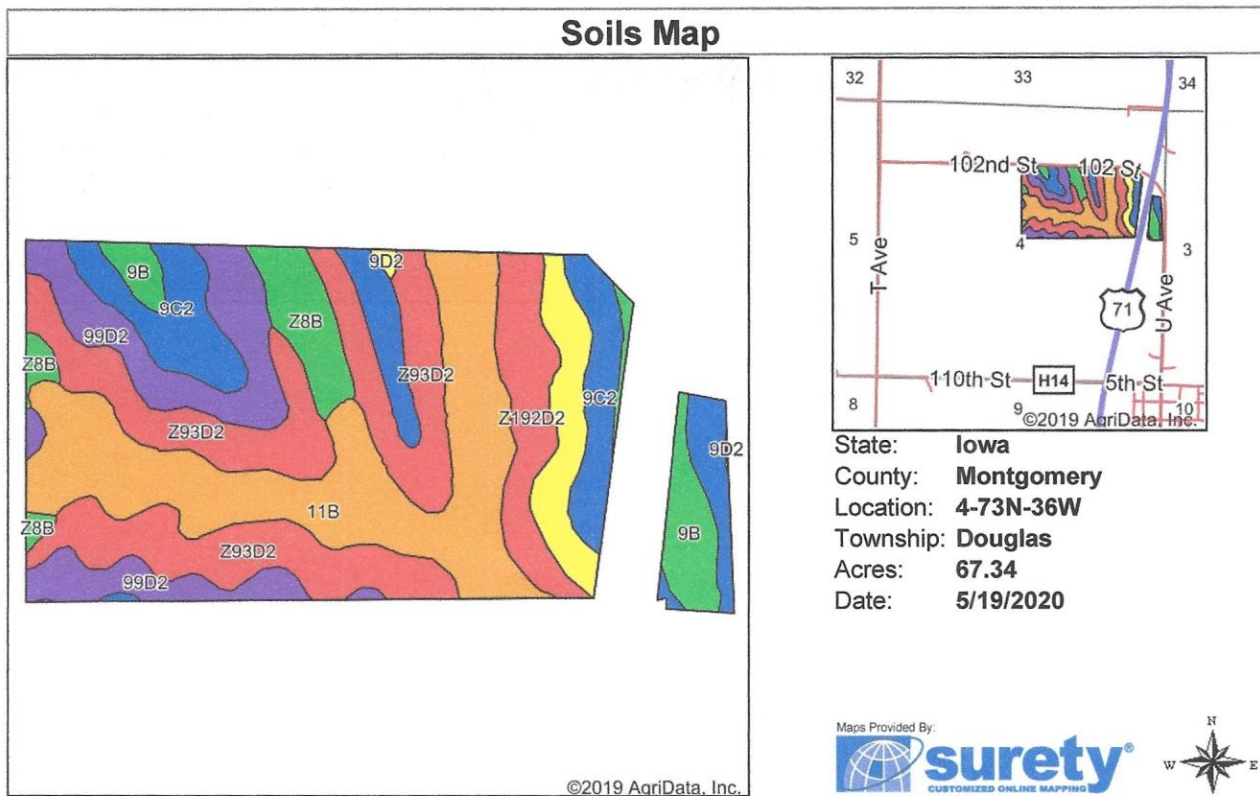
- Wetland Determination
- Field Boundary



Prepared by Montgomery Co. FSA

*54,222  
6500's*





Soils data provided by USDA and NRCS.

Area Symbol: IA137, Soil Area Version: 27

Code	Soil Description	Acres	Percent of field	CSR2 Legend	Non-Irr Class *c	CSR2**	CSR	*n NCCPI Soybeans
Z93D2	Shelby-Adair clay loams, deep loess, 9 to 14 percent slopes, eroded	17.14	25.5%		IIIe	38		46
11B	Ackmore-Colo-Judson complex, 2 to 5 percent slopes	16.74	24.9%		IIw	79	68	80
9C2	Marshall silty clay loam, 5 to 9 percent slopes, eroded	10.07	15.0%		IIIe	87	68	63
99D2	Exira silty clay loam, 9 to 14 percent slopes, eroded	8.44	12.5%		IIIe	59	55	63
Z192D2	Adair clay loam, deep loess, 9 to 14 percent slopes, eroded	4.53	6.7%		IVe	14		40
9D2	Marshall silty clay loam, 9 to 14 percent slopes, eroded	3.69	5.5%		IIIe	61	58	59
9B	Marshall silty clay loam, 2 to 5 percent slopes	3.39	5.0%		IIe	95	85	74
Z8B	Judson silty clay loam, deep loess, 2 to 5 percent slopes	3.34	5.0%		IIe	92		78
<b>Weighted Average</b>						<b>63.3</b>	<b>*-</b>	<b>*n 62.4</b>

\*\*IA has updated the CSR values for each county to CSR2.

\*- CSR weighted average cannot be calculated on the current soils data, use prior data version for csr values.

\*n: The aggregation method is "Weighted Average using major components"

\*c: Using Capabilities Class Dominant Condition Aggregation Method

Soils data provided by USDA and NRCS.