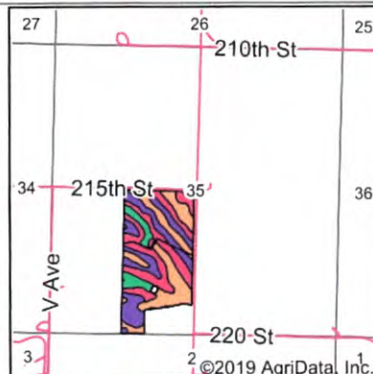
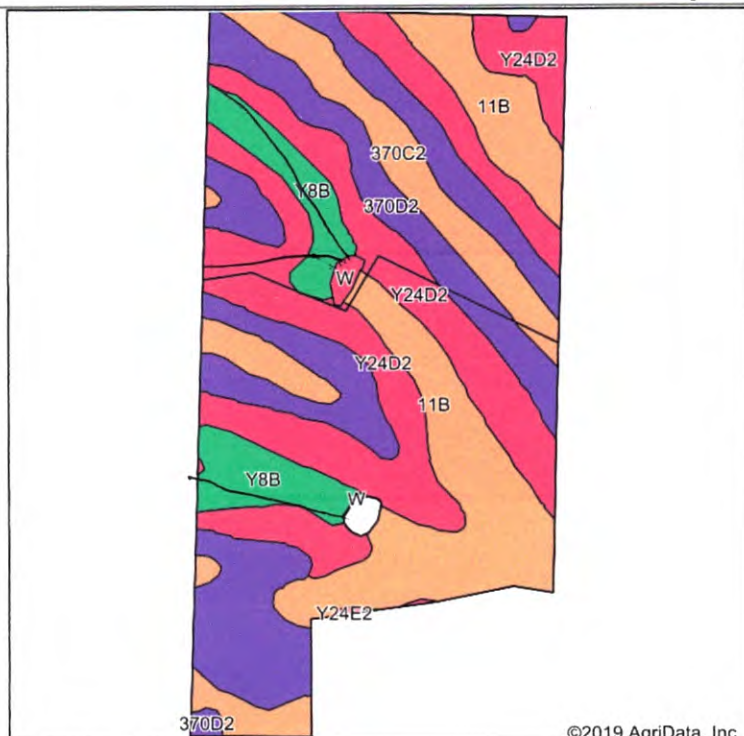


Soils Map



State: **Iowa**
 County: **Montgomery**
 Location: **35-72N-36W**
 Township: **Washington**
 Acres: **66.05**
 Date: **2/21/2019**



Soils data provided by USDA and NRCS.

Area Symbol: IA137, Soil Area Version: 26

Code	Soil Description	Acres	Percent of field	CSR2 Legend	Non-Irr Class *c	CSR2**	CSR	*n NCCPI Soybeans
Y24D2	Shelby clay loam, dissected till plain, 9 to 14 percent slopes, eroded	21.36	32.3%		IIIe	49		53
370D2	Sharpsburg silty clay loam, 9 to 14 percent slopes, eroded	18.02	27.3%		IIIe	54	57	59
11B	Ackmore-Colo-Judson complex, 2 to 5 percent slopes	13.45	20.4%		IIw	79	68	80
370C2	Sharpsburg silty clay loam, 5 to 9 percent slopes, eroded	7.64	11.6%		IIIe	80	67	63
Y8B	Judson silty clay loam, dissected till plain, 2 to 5 percent slopes	5.17	7.8%		Ile	93		78
W	Water	0.33	0.5%			0	0	0
Y24E2	Shelby clay loam, dissected till plain, 14 to 18 percent slopes, eroded	0.08	0.1%		IVe	35		49
Weighted Average						63.2	*-	*n 63

**IA has updated the CSR values for each county to CSR2.
 *- CSR weighted average cannot be calculated on the current soils data, use prior data version for csr values.
 *g. The aggregation method is "Weighted Average using major components"
 *c. Using Capabilities Class Dominant Condition Aggregation Method

Your Ad Could Be Here
in the Next Plat and Directory Publication.
Contact Farm & Home Publishers 1-800-685-7432 • Fax 641-444-5150
E-Mail info@farmandhomepublishers.com
to get your business added to the next year's publication

T-72-N

WASHINGTON PLAT
(Landowners)

R-36-W

