

# The Importance Of Set Plays



**Pride. Passion. Belief.**



# Area's Of Focus

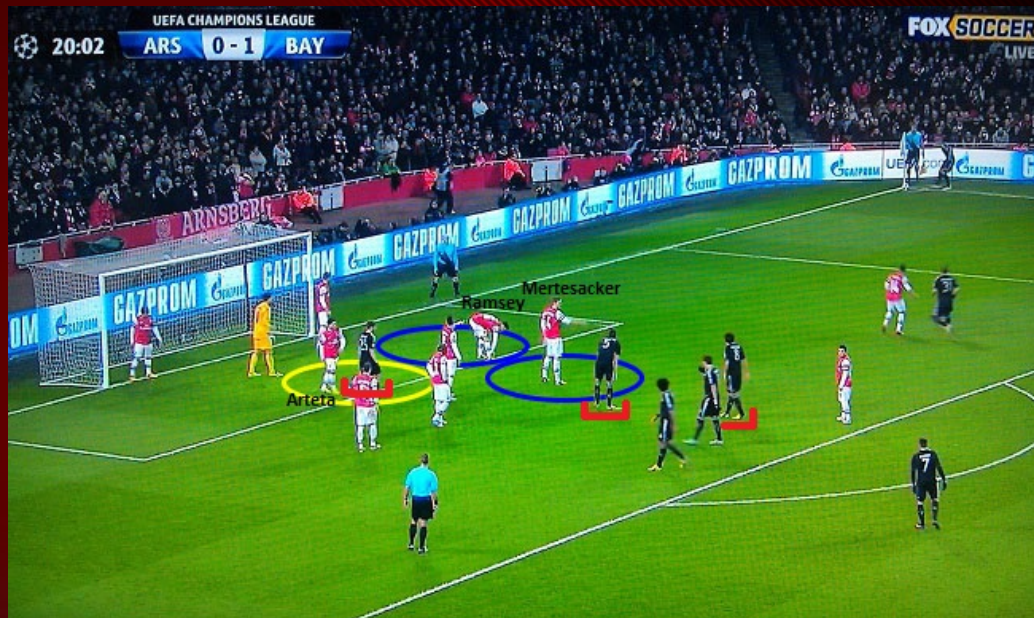
- Type of Set Plays
- The 5 key areas of Set Plays
- Facts
- Semi Zonal v Full Zonal
- Coaching Challenges





# Types of set plays

- Free Kicks (Direct)
- Free Kicks (Indirect)
- Goal Kicks
- Throw ins
- Kick off
- Penalties
- Bounce Ball
- Corners





# Question?

How much time (%) do you spend on set plays?



# Types of set plays

- Free Kicks (Direct)
- Free Kicks (Indirect)
- Goal Kicks
- Throw ins
- Kick off
- Penalties
- Bounce Ball
- **Corners**





# Set Plays (D.O.V.E.S)

**D**elivery

**O**rganisation

**V**ariety

**E**fficiency

**S**urprise





# Set Plays (D.O.V.E.S)

**D**elivery

**O**rganisation

**V**ariety

**E**fficiency

**S**urprise





# Analysing the Opposition; Corners

- Does the opposition cover posts
- Where does the goalkeeper usually stand
- Do defenders mark players or space
- Are the defenders alert, with good communication between goalkeeper and all defenders
- Does the goalkeeper come out or stay on his line
- Does the goalkeeper punch or tries to catch difficult balls



© West Bromwich Albion FC via Gett





# Analysing the Opposition; Corners

- The aggressiveness & jumping ability of GK
- How the GK handles high or low balls
- Whether a defender(s) comes out for a short corner
- Do other defenders come back quickly or at all to cover extra attackers
- The height & heading ability of defenders
- Whether defenders leave space open
- Ability and organisation when the ball is cleared





# Set Plays (D.O.V.E.S)

**D**elivery

**O**rganisation

**V**ariety

**E**fficiency

**S**urprise





# Set Plays (D.O.V.E.S)



# The Set Play Specialist

“ Each team needs a set piece specialist in the line up – or, to put it another way, the lack of one creates an empty space in the sides armoury ”

Gica Hagi





# Focus On The Facts

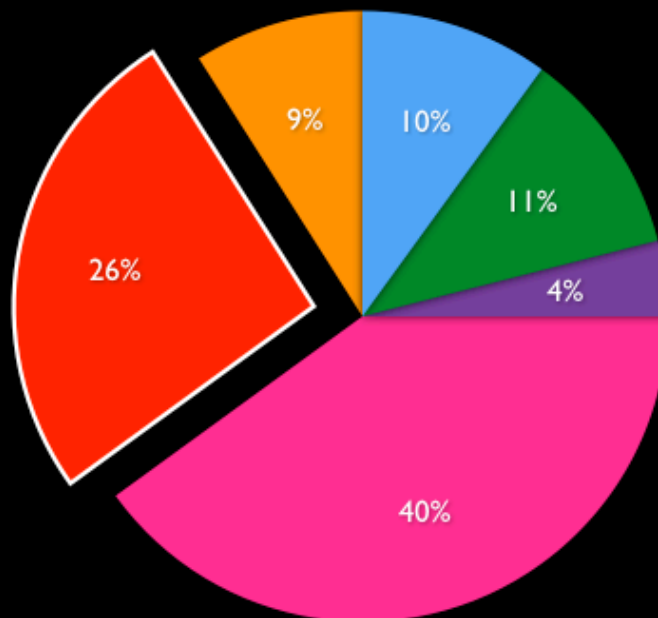
## Domestic Game & International Game

Competition	Open Play	% Goals Scored from Set Piece	Corners	Direct FKs	Indirect FKs	Penalties	Throw Ins	GOALS IN SAMPLE
International 14-15	74%	26%	10%	3%	6%	6%	1%	348
International 15-16*	82%	18%	5%	3%	4%	6%	0%	134
Euro 2016 Qualifying (all teams)	68%	32%	14%	2%	6%	9%	1%	694
Premiership 14-15	70%	30%	13%	3%	7%	6%	0%	975
Premiership 15-16*	72%	28%	12%	2%	7%	7%	1%	382
Championship 14-15	69%	31%	13%	4%	7%	7%	1%	1488
Championship 15-16*	72%	28%	14%	2%	5%	6%	0%	513
<b>Average/Total</b>	<b>72%</b>	<b>28%</b>	<b>12%</b>	<b>3%</b>	<b>6%</b>	<b>7%</b>	<b>1%</b>	<b>4534</b>



# Focus On The Facts

## Types of Goals Scored - Premier League 15/16



- Counter Attack
- Individual
- Long Ball
- Passing Move
- Set Piece
- Other



# Importance of Set Pieces

## Set Piece Goals per team- 15/16 season



	Total	Wide FK	Direct FK	Corner	Throw Ins	Penalty
Tottenham	22	5	2	10	0	5
Leicester	21	6	0	5	0	10
West Ham	20	4	4	6	2	4
Crystal Palace	19	3	1	11	0	4
Man City	19	3	0	10	1	5
Sunderland	18	6	4	5	0	3
Liverpool	17	5	1	9	0	2
Southampton	16	4	1	8	0	3
Chelsea	15	2	4	5	0	4
Bournemouth	15	2	0	9	1	3
League Ave	15.0	3.2	1.3	6.7	0.3	3.7



# Importance of Set Pieces

## Set Piece Goals per team- 15/16 season



	Goals per game from SPs	% of Total Goals
Tottenham	0.58	32%
Leicester	0.55	31%
West Ham	0.53	31%
Crystal Palace	0.50	49%
Man City	0.50	27%
Sunderland	0.47	38%
Liverpool	0.45	27%
Southampton	0.42	27%
Chelsea	0.39	25%
Bournemouth	0.39	33%
League Ave	0.39	30%





# Importance of Set Pieces

## Set Piece Goals per team- 16/17 season



	Total	Wide FK	Direct FK	Corner	Throw Ins	Penalty
Liverpool	13	3	1	4	0	5
West Brom	10	2	0	7	0	1
Crystal Palace	9	3	0	5	0	1
West Ham	9	2	0	5	0	2
Bournemouth	9	5	0	1	0	3
Swansea	8	3	1	2	0	2
Man City	8	2	1	2	0	3
Hull City	7	2	1	3	0	1
Arsenal	7	1	0	4	0	2
Leicester	7	1	0	2	0	4
League Ave	6.7	1.5	0.4	2.8	0.0	2.0



# Importance of Set Pieces

## Set Piece Goals per team- 16/17 season



	Goals per game from SPs	% of Total Goals
Liverpool	0.93	37%
West Brom	0.71	50%
Crystal Palace	0.64	38%
West Ham	0.64	60%
Bournemouth	0.64	47%
Swansea	0.57	50%
Man City	0.57	27%
Hull City	0.54	64%
Arsenal	0.50	21%
Leicester	0.50	41%
League Ave	0.48	36%



# Importance of Set Pieces

## Corners English Premier - All - 2016/2017

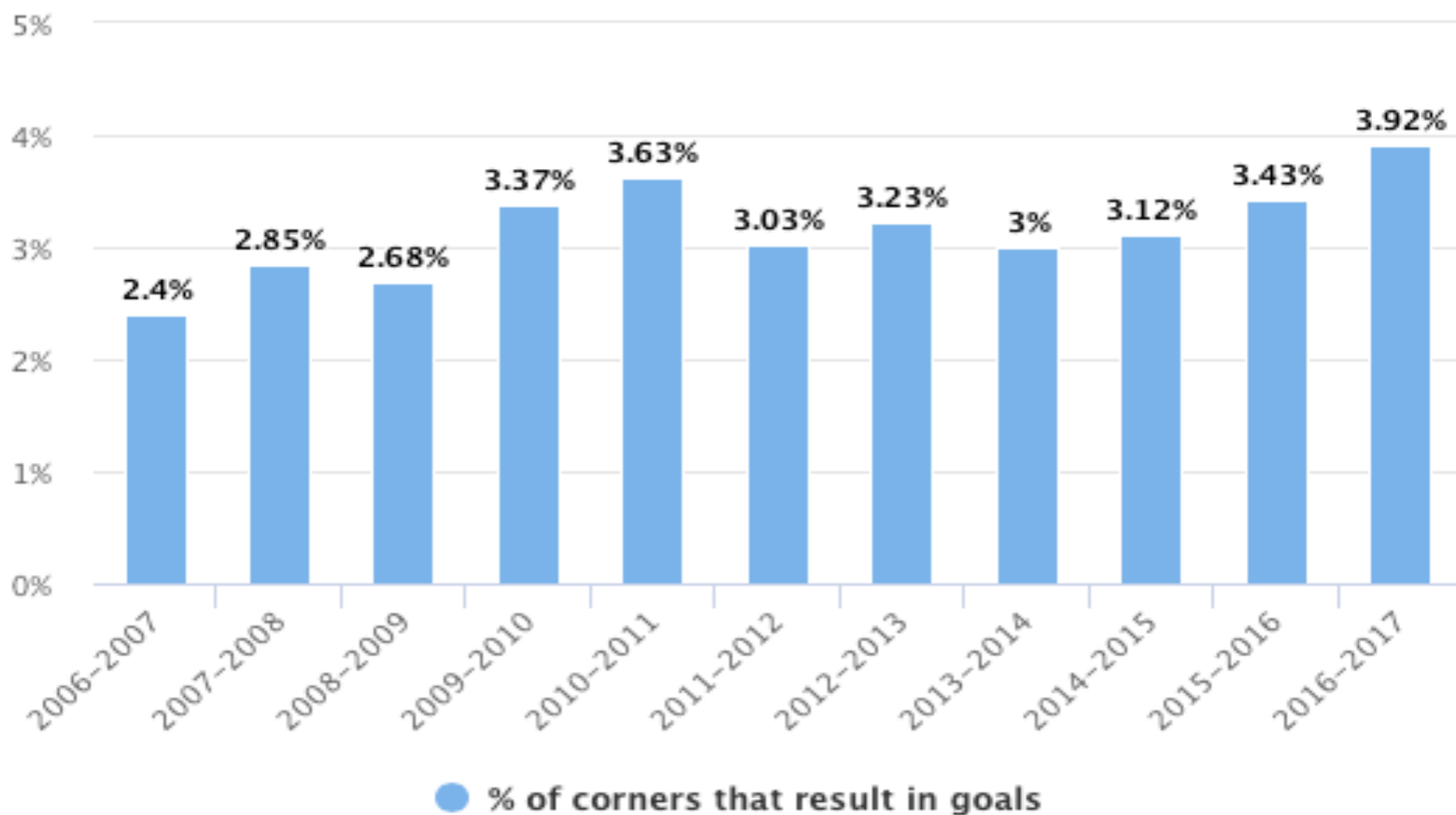
Position	Team	Played	Corners		Corners per game	
			For	Agst	For	Agst
1	Man City	14	102	48	7.29	3.43
2	Tottenham	14	96	58	6.86	4.14
3	Man United	14	92	47	6.57	3.36
4	Liverpool	14	90	47	6.43	3.36
5	Bournemouth	14	88	59	6.29	4.21
6	Crystal Palace	14	84	91	6.00	6.50
7	Everton	14	78	75	5.57	5.36
8	Arsenal	14	76	49	5.43	3.50
9	Chelsea	14	74	65	5.29	4.64
10	Stoke	14	71	97	5.07	6.93
11	Southampton	14	70	59	5.00	4.21
12	West Ham	14	64	66	4.57	4.71
13	Leicester	14	63	74	4.50	5.29
14	West Brom	14	63	71	4.50	5.07
15	Swansea	14	57	83	4.07	5.93
16	Burnley	14	56	111	4.00	7.93
17	Watford	14	53	67	3.79	4.79
18	Hull	13	49	83	3.77	6.38
19	Middlesbrough	13	48	79	3.69	6.08



# Importance of Set Pieces

## % of corners that result in goals

Premier League by season





# This season – Stoke City





# EPL 2014/15

## Defending Corners - Stats

**Semi Zonal - 16 Teams**  
**Full Zonal - 1 Team**  
**Full Zonal to Semi Zonal - 2 Teams**  
**Semi Zonal to Full Zonal - 1 Team**



# Defending Corners - Stats

0 on Posts	9 Teams
1 on Back Post	9 Teams
Both Posts	1 Team
Front or Back Post	1 Team

Depends on Delivery

## Top 10 Defensive Records

- 7 Teams - 0 on Post
- 3 Teams - 1 Back Post



# Attacking Corners - Stats

4 in Box	2 Teams
5 in Box	12 Teams
6 in Box	6 Teams

## Top 10 Attacking Records:

- 4 in the Box - 1 Teams (of 2)
- 5 in the Box - 7 Teams (of 12)
- 6 in the Box - 2 Teams (of 6)





# International



## GROUP B



# Corners Data

Data from 88 corners in Euro 2016 qualifying group B matches

# Attacking Set Up

## Number of Players Attacking in the Box

	No. of Corners	% Corners
1 Attacking	0	0.0%
2 Attacking	0	0.0%
3 Attacking	1	1.1%
4 Attacking	9	10.2%
5 Attacking	49	55.7%
6 Attacking	23	26.1%
6+ Attacking	6	6.8%

## Number of Players On the Edge of the Box

	No. of Corners	% Corners
0 on the edge	4	4.5%
1 on the edge	18	20.5%
2 on the edge	54	61.4%
3 on the edge	11	12.5%
3+ on the edge	1	1.1%

## Number of Players Back Defending

	No. of Corners	% Corners
0 Back Defending	0	0.0%
1 Back Defending	34	38.6%
2 Back Defending	36	40.9%
3 Back Defending	16	18.2%
3+ Back Defending	2	2.3%

# Defensive Set Up

## Defenders on Posts

	% Corners
No one on Posts	22.4%
Defender on Front Post	16.4%
Defender on Back Post	61.2%
Defenders on Both Posts	0.0%

## Defender in Front Post Hole

	% Corners
Front Post Hole	95.5%
No Front Post Hole	4.5%

## Markers

	% Corners
0 Markers	0.0%
1 Marker	1.5%
2 Markers	1.5%
3 Markers	7.5%
4 Markers	11.9%
5 Markers	53.7%
6 Markers	22.4%
7 Markers	1.5%

## Players On the Edge of the Box

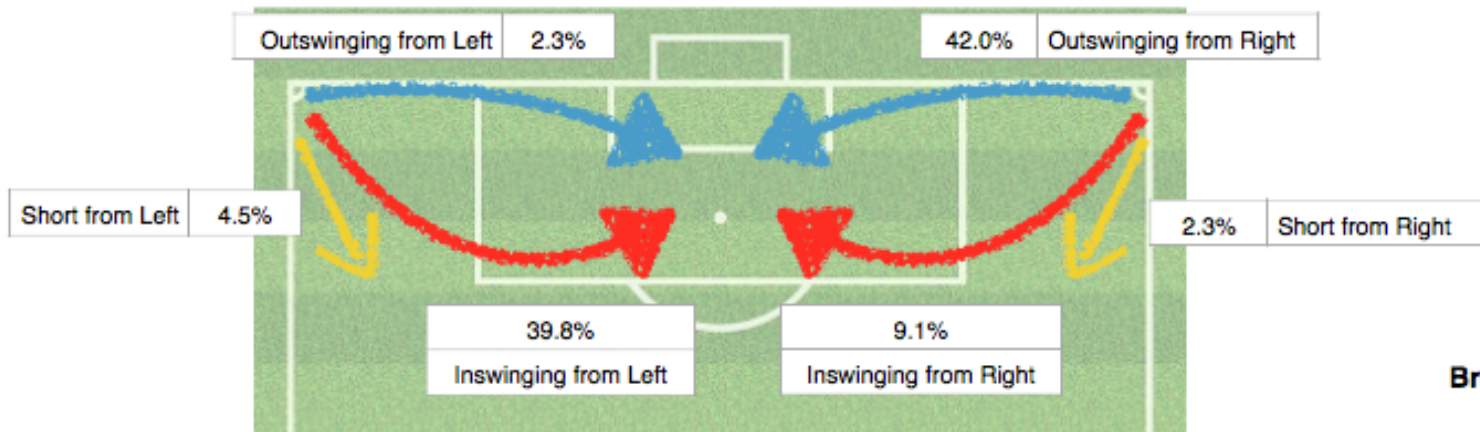
	% Corners
0 on the edge	1.5%
1 on the edge	38.8%
2 on the edge	46.3%
3 on the edge	13.4%
3+ on the edge	0.0%

## Players Left Up Attacking

	% Corners
0 Left Up	37.3%
1 Left Up	52.2%
2 Left Up	9.0%
3 Left Up	1.5%
3+ Left Up	0.0%

All teams set up semi-zonally

# Delivery Type & 1<sup>st</sup> Contact

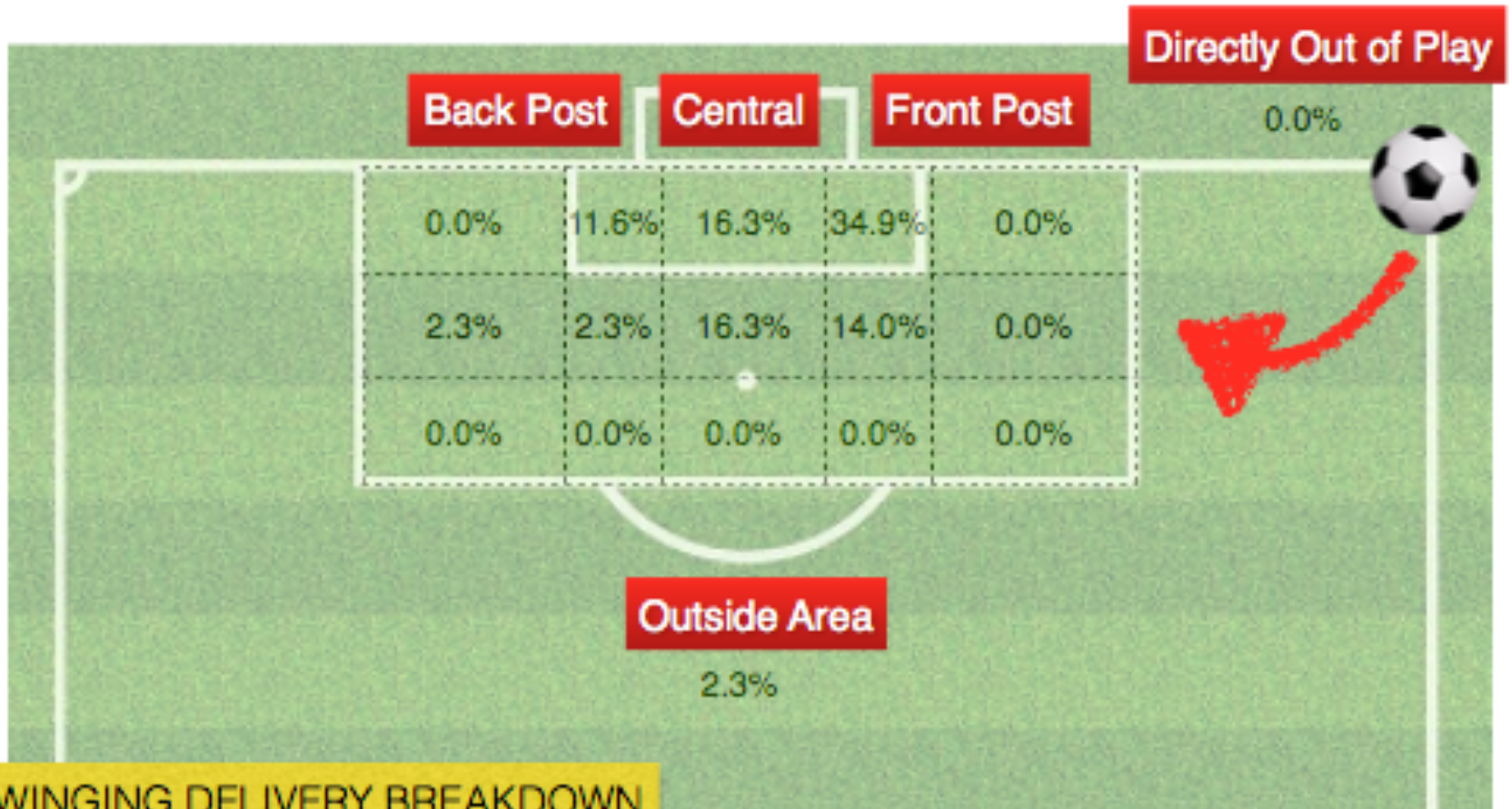


**Breakdown of Delivery Type**

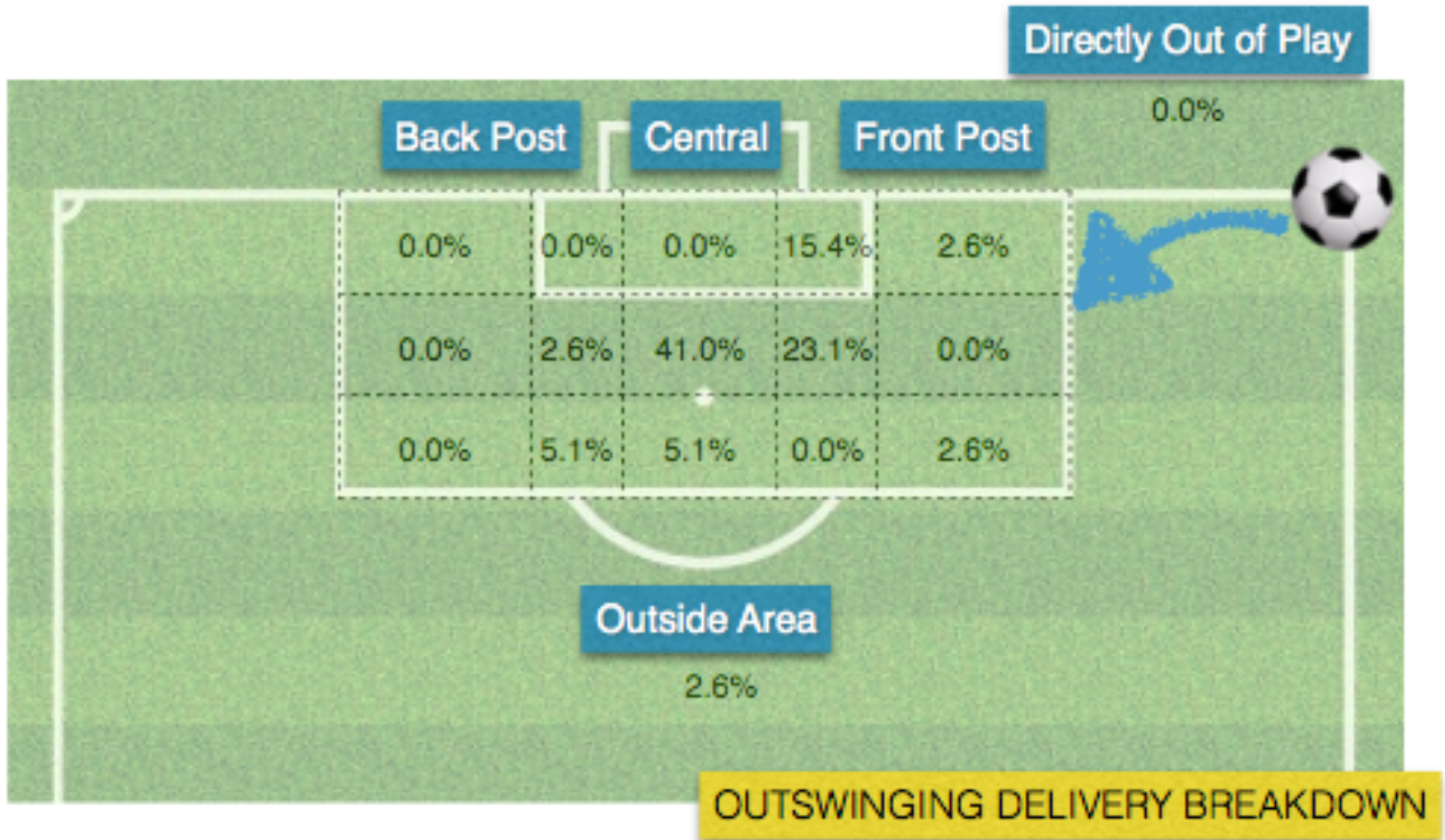
## First Contact

	% Corners
Attacker First Contact	46.3%
Defender First Contact	50.7%
No First Contact	3.0%

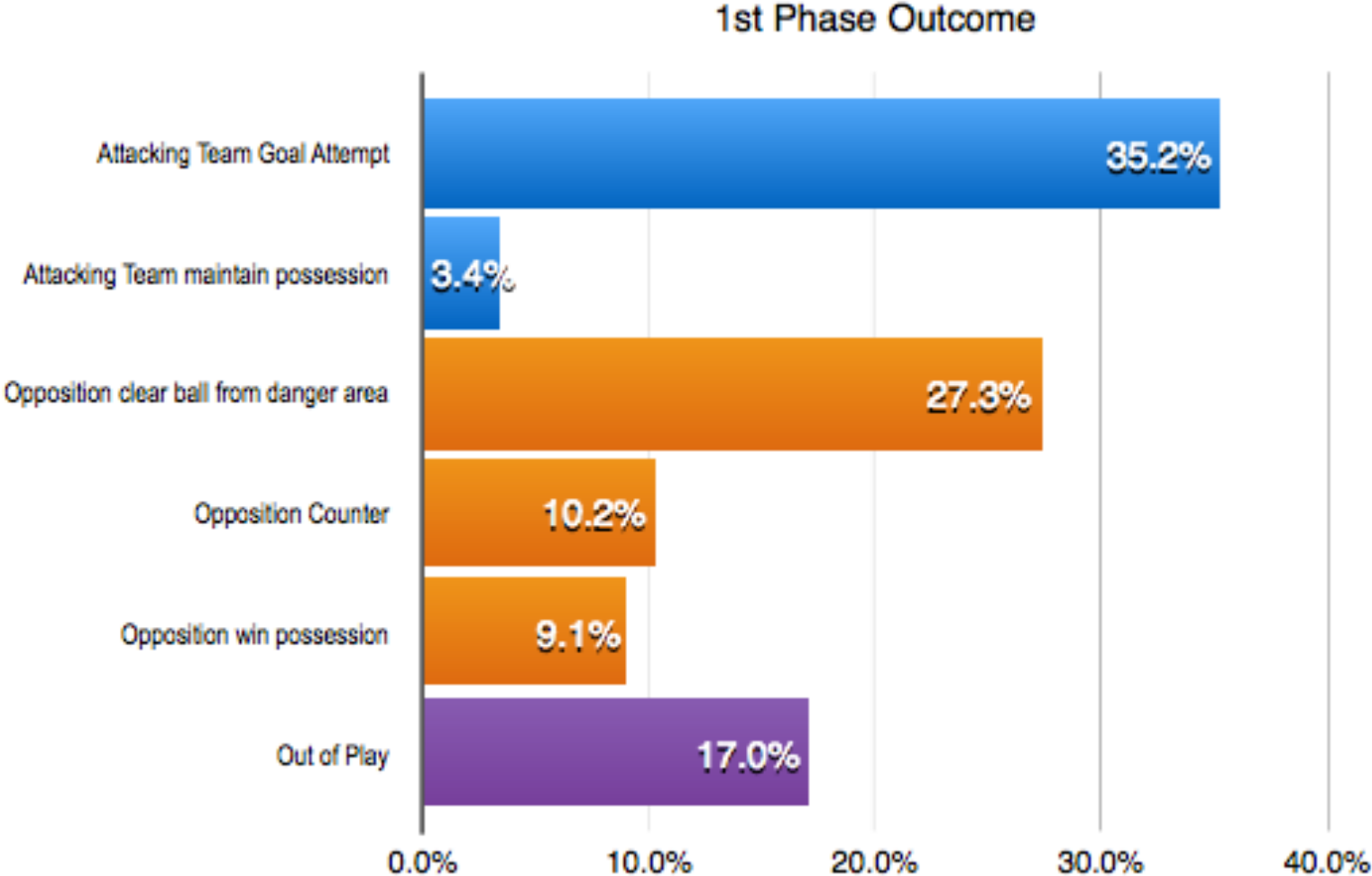
# Delivery Area - Inswingers



# Delivery Area - Outswingers

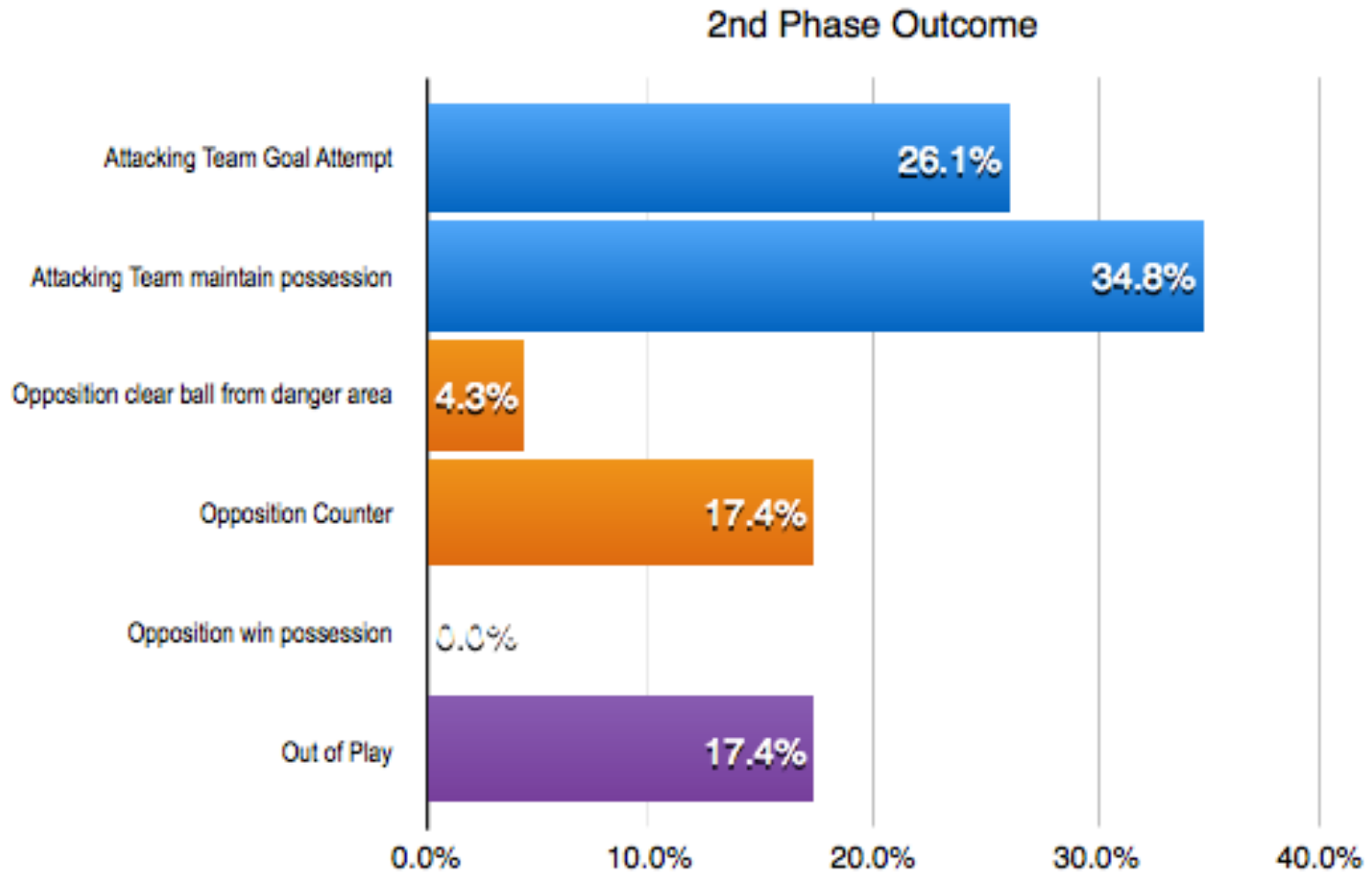


# Outcome – 1<sup>st</sup> Phase





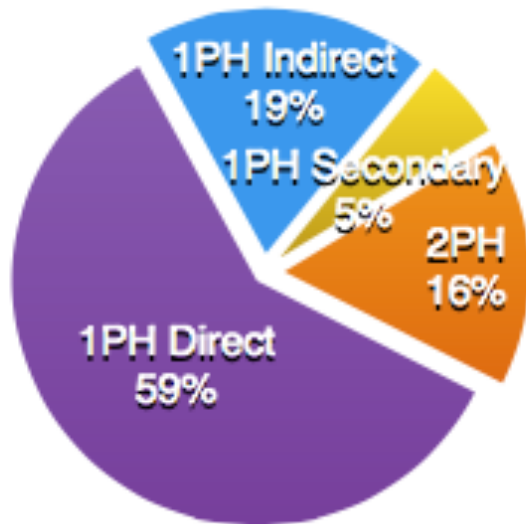
# Outcome – 2<sup>nd</sup> Phase



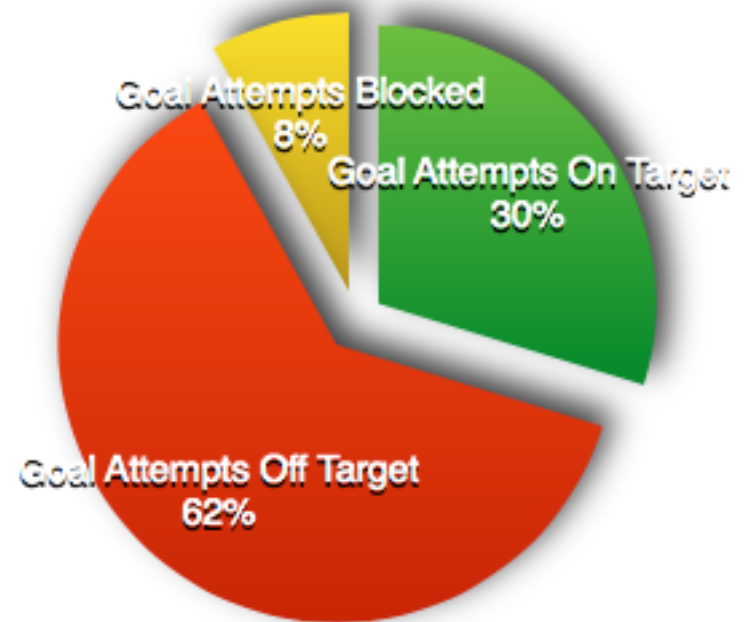
# Goal Attempts

37 goal attempts from 88 corners  
42.0% of corners led to a goal attempt  
22 goal attempts direct from delivery

Goal Attempts By Phase



Goal Attempt Outcome



1PH Direct = Goal attempt direct from the initial corner delivery  
1PH Indirect = Goal attempt within the 1<sup>st</sup> Phase (not direct from delivery)  
1PH Secondary = a 2<sup>nd</sup>, 3<sup>rd</sup>, 4<sup>th</sup> goal attempt within the 1<sup>st</sup> Phase  
2PH = Goal attempt in the 2<sup>nd</sup> Phase of the corner

# Goal Attempts



Breakdown of Goal Attempts Direct from Delivery by Area



# Zonal Marking Corners

- “It’s called zonal marking because you have to imagine the area is divided into segments, with players on the defending team responsible for one of these segments,
- “If each player marshals his segment or ‘zone’ properly, technically, you shouldn’t concede.”



Iain Dowie



# Zonal Marking Corners





# Zonal Marking Corners





# Semi Zonal Marking Corners

Semi zonal marking at corners consists of one or more players marking specific zones and other players marking opposition



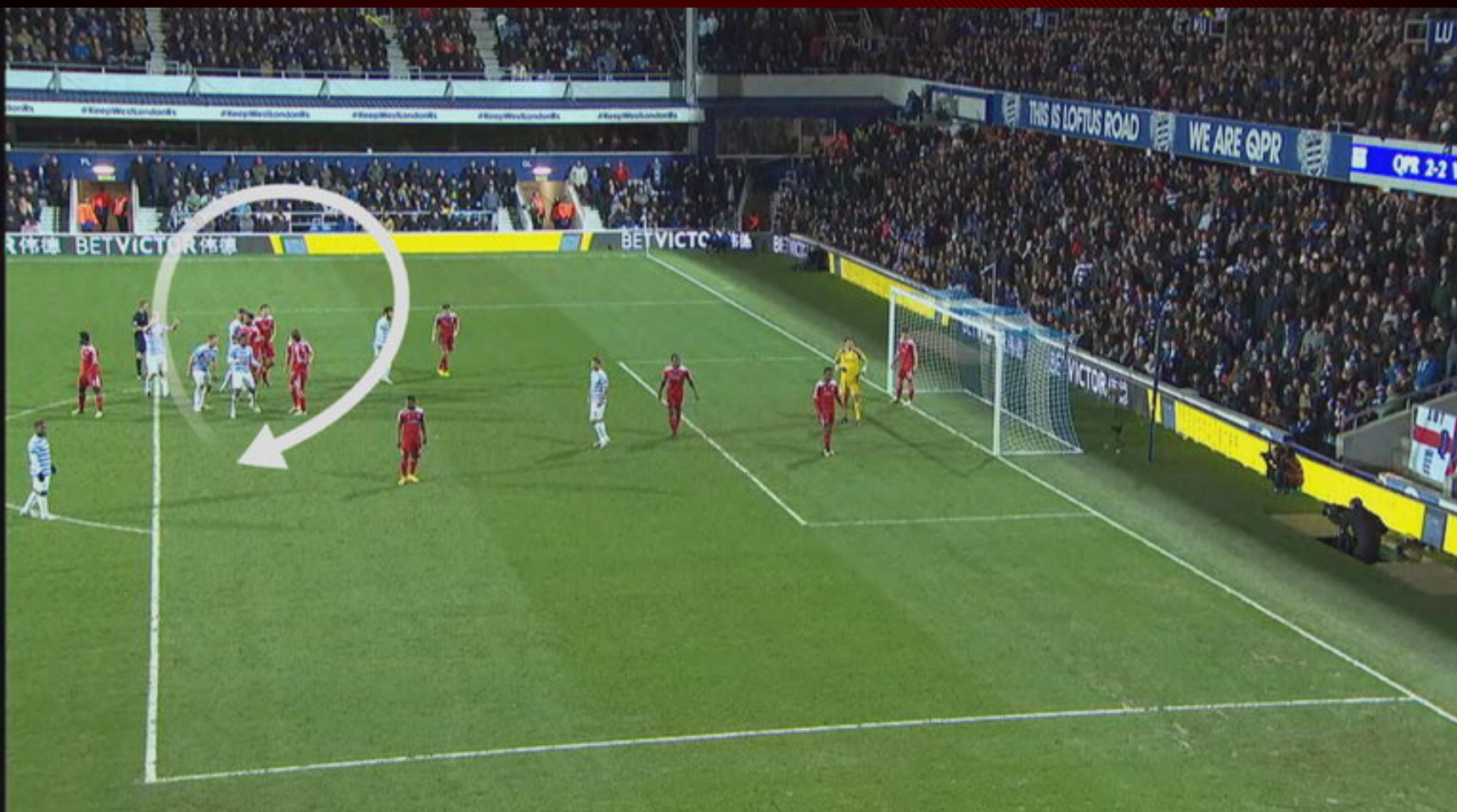
# Semi Zonal Marking Corners







# Semi Zonal Marking Corners





# Group Task

- Group Task (15mins)

In your groups make your case for your findings based around the topic you have been given.

- Present your findings (5min per group)



# Defending Corners

- Group 1 - Strengths of Zonal Marking
- Group 2 - Weaknesses of Zonal Marking
- Group 3 – Strengths of Semi Zonal Marking
- Group 4 – Weaknesses of Semi Zonal Marking



# Defending Corners

sky SPORTS 1  
LIVE

## CHRISTMAS DAY TRENDS

IN 22 PL SEASONS

TOP OF TABLE	10 CHAMPIONS
BIGGEST TITLE COMEBACK	ARSENAL 1997-98, 13 PTS
BOTTOM OF TABLE	2 SURVIVORS
IN RELEGATION ZONE	30 SURVIVORS
RELEGATION ZONE ALL SURVIVED	0 SEASONS
RELEGATION ZONE ALL RELEGATED	2 SEASONS
BIGGEST SLIDE TO RELEGATION	NORWICH 1994-95, 11 PTS
TOP SCORERS	COLE, PHILLIPS, SUAREZ, 19

[skysports.com/skygo](http://skysports.com/skygo)



# Coaching Challenges



© Getty Images

The biggest coaching challenge is to prepare your players to organise themselves efficiently



# Coaching Challenges

How do you prepare your players for set plays?



# Coaching Challenges



**Review: Euro 2016 Qualifying Group**

**National Squad**







# Conclusion



Set plays are important and will make between 24-46% of your goals.

So you have to practice set plays repeatedly

# The Importance Of Set Plays



**Pride. Passion. Belief.**