



FALL 2025

EASTERN GREENBRIER VALLEY ADVENTURES IN LEARNING

OCTOBER 2 – NOVEMBER 6

ABOUT ADVENTURES IN LEARNING

Join us for our Adventures in Learning **FALL 2025** session held on Thursdays from **October 2 through November 6**. These exciting and educational classes are open to all ages! Be sure to sign up early, as some classes are limited in size and others fill fast!

- Registration fee for all classes is \$35.
- \$25 material fee for the Basket Weaving class.
- Deadline to register is September 25th, 2025.
- Lunches are \$8 per week; November 6 is the Greenbrier County Library Luncheon Fundraiser, tickets bought in advance are only \$8.
- Transportation and scholarships may be available upon request.
- All classes are held at the Lewisburg United Methodist Church at 1133 Washington St. E., Lewisburg, WV 24901.

PLEASE NOTE!

*Shepherd's Center of Greenbrier Valley follows the
Greenbrier County School Closing Schedule.*

*If schools are closed, we **WILL NOT** hold classes that day.*

MORE INFO

WATER AEROBICS

WEDNESDAYS

1:30PM

Greenbrier Valley Aquatic Center
\$5 per person paid directly
to GVAC

BOOK GROUP

SECOND THURSDAY
EACH MONTH

11:00 AM

Lewisburg United Methodist
Church (2nd parlor), unless
otherwise noted

COFFEE TALK

SECOND TUESDAY
EACH MONTH

10:30 AM

New Vision Baptist Church
White Sulphur Springs

Come for comradery and good
conversation!

CHAIR YOGA

EVERY MONDAY &
THURSDAY

10:30 AM

Lewisburg United Methodist
Church in Asbury Room, unless
otherwise noted

DONATIONS CHANGE LIVES

Please consider making a gift to Shepherd's Center to help us grow our reach and meet the rising needs of older adults in the Greenbrier Valley. We are funded by local foundations, grants, congregational support, and individual donations. As a 501c3 nonprofit organization, your gift is tax deductible. With your help, we can make a greater difference in the lives of older adults!

Call Sarah Moloney, Executive Director and Neal Roth, Assistant Director, to see how you can GIVE in different ways.

(304) 645-4196 info@scgvwv.org

Donations may be sent to P.O. Box 54, Lewisburg, WV 24901, made online www.scgvwv.org, or simply scan the QR code.

Thank you for your support - we can't do it without you!



SCAN TO DONATE

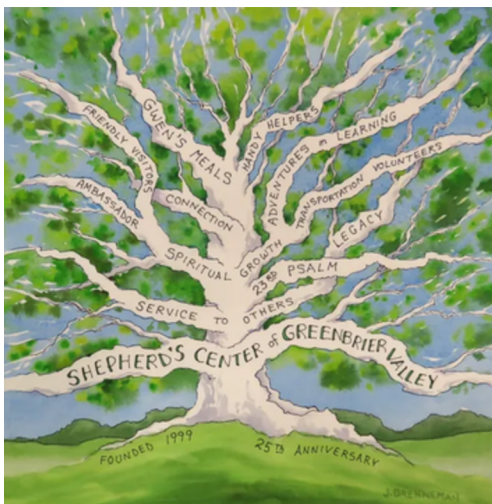
SUPPORT
&
SPONSOR

Would you consider sponsoring a session or two for someone else? What a great gift for a neighbor new to town or someone who hasn't attended classes before. Use the registration form to make your gift of education and adventure!

HISTORY OF SHEPHERD'S CENTER OF GREENBRIER VALLEY

Shepherd's Center of Greenbrier Valley was started by Ann McClung in 1999 after a visit to Shepherd's Centers of America in Kansas City, MO. Seven area churches agreed to sponsor the formation of Shepherd's Center of Greenbrier Valley, we obtained our State Charter, and we were off and running. Adventures in Learning started in 1999 with 45 participants. We now have approximately 150 registrants for AIL sessions. Other programs that have been added through the years are Gwen's Meals, Handy Helper, Friendly Visitor, transportation to medical appointments or grocery shopping for those who are no longer driving, as well as being a senior resource center in the area. We currently have 27 area sponsoring congregations that support us in various ways. This year we celebrate our 25th anniversary and look forward to continued growth and expansion to reach out to those in our community who need our services.

WE'RE ON A MISSION!



Shepherd's Center of Greenbrier Valley is an interfaith ministry to sustain mature adults to live independently by providing opportunities for lifelong learning, community service, caring relationships, and spiritual growth.

We are committed to creating an environment of inclusion where everyone is welcome and encouraged to be their true selves. We value individuals of all ages, religion, nationality, disability, race, sex, sexual orientation, and gender identity.



Explore Life's Next Chapter

shepherd'scenter
OF GREENBRIER VALLEY

2024 IMPACT REPORT

FIGHTING ISOLATION THROUGH SERVICE TO OTHERS, EDUCATIONAL OPPORTUNITIES, AND BY BUILDING MEANINGFUL RELATIONSHIPS

DIRECT SERVICES

Gwen's Meals

- Over 8,500 meals prepared
- 26 partner organizations & congregations
- 35 volunteer drivers
- Over 17,000 miles driven by volunteers
- Embedded in each meal delivery is a wellness check/friendly visit



Friendly Visitor

- 15 Recipients
- 24 Volunteers
- 183 Visitation Hours

HANDY HELPER

- Accessibility ramp
- Door replacements
- Curtain rods installed
- Pictures and art hung



SOCIAL OPPORTUNITIES

- Adventures In Learning Sessions
- Lunch & Learn
- Coffee Talk
- Book Group Events
- Adventure Travel



GEOGRAPHIC AREAS



Smoot

White Sulphur Springs

Williamsburg

Alderson
Charmco
Dawson
Clintonville
Fairlea
Frankford
Lewisburg
Rainelle
Renick
Ronceverte
Rupert

LIFELONG LEARNING

Adventures In Learning

- 35 Classes
- 151 Participants
- 4,822 Instructional Hours
- 300 Volunteer Hours

Lunch & Learn

- 5 Sessions
- Over 300 attendees
- Informative topics include history, culture and current events
- 4 Field trips



HEALTH PROMOTION

- Tai Chi
- Water Aerobics
- Chair Yoga
- Line Dancing
- Optimizing Health Classes



INFORMATION & REFERRALS

On an annual basis we handle an average of:

- 1,000 Calls
- 200 Referrals & Information Requests
- 40 Transportation Requests



WHAT PEOPLE ARE SAYING

"I choose to give an annual donation to the Shepherd's Center of Greenbrier Valley because it was my mother's favorite thing in her last years."

"When you put a meal in a recipient's hands, you can see how important it is to them, not just the meal but the personal interaction."

"I love the comradery, the fellowship, and the acceptance!"



REGISTRATION

ADVENTURES IN LEARNING FALL 2025

PLEASE FILL OUT THE FOLLOWING INFORMATION

NAME:

FULL ADDRESS:

PHONE:

EMAIL ADDRESS:

EMERGENCY CONTACT INFO:

(OPTIONAL) CHURCH AFFILIATION:

**REGISTRATION
DEADLINE:
SEPT 25, 2025**

CHOOSE YOUR CLASSES

THURSDAY SESSIONS

9-9:50AM

- ☐ Current Events
- ☐ Chair Yoga

10-10:50AM

- ☐ Generations Together
- ☐ Inner-G Movement
- ☐ Relationship of Arts & Religion
- ☐ Community Potpourri

11-11:50AM

- ☐ Bible Study
- ☐ Creative Writing
- ☐ Appalachian Lore
- ☐ Nature's Potpourri

1-2:30PM

- ☐ Basket Weaving
- ☐ Games / Book Group



SCAN TO
REGISTER ONLINE

CALL (304) 645-4196 WITH QUESTIONS

NEED TO KNOW:

DINE WITH US

A lunch buffet will be provided each week for \$8. Please let us know in advance if you would like lunch. We need to have a head count for those preparing the meals. November 6th is the Greenbrier County Library Luncheon Fundraiser, tickets bought in advance are only \$8.

Circle the dates you would like lunch!

10/02 10/09 10/16 10/23 10/30 11/6

SPECIAL REQUESTS

- ☐ Transportation Assistance
- ☐ Scholarship Information

FEES ENCLOSED

- \$___ \$35 Registration Fee
- \$___ Lunch @ \$8 per week
- \$___ \$25 Material Fee Basket Weaving Class
- \$___ Tax-deductible Donation to Support SCGV
- \$___ Sponsorship Donation

EMAIL INFO@SCGVWV.ORG WITH QUESTIONS

Total Enclosed: \$_____

By registering you are giving SCGV the right to use a photograph that you appear in for promotional material.

WWW.SCGVWV.ORG

Inside...



Watch our Facebook page
for upcoming events!

COFFEE TALK
BOOK GROUP
LUNCH & LEARN
ADVENTURE TRAVEL

CONTINUING
OUR LEGACY
FOR ANOTHER
25 YEARS

PLUS

Ways to HELP!
Ways to GIVE!
Ways to
CELEBRATE!

**YOUR ADVENTURES
IN LEARNING
FALL 2025
SCHEDULE!**

**(304) 645-4196
INFO@SCGVWV.ORG**



shepherd'scenter
OF GREENBRIER VALLEY

**PO Box 54
Lewisburg, WV 24901**

NONPROFIT ORG
U.S. POSTAGE PAID
LEWISBURG, WV
PERMIT NO. 7

**YOUR ADVENTURES IN LEARNING
FALL 2025 SCHEDULE IS INSIDE!**

WWW.SCGVWV.ORG