



BBCNEWSLETTER 2023.07.17

BALLINA BICYCLE CLUB RIDE ATTENDEES

For the week – 45 - For week ending Sun 16JUL2023.

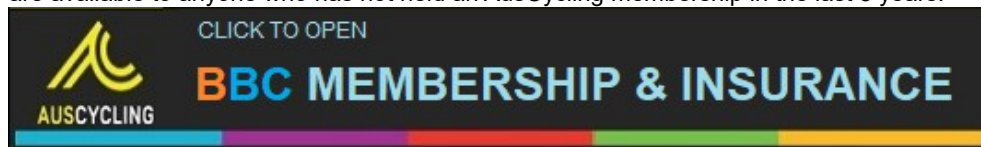
Monday – 9
Tuesday – 2
Wednesday – 7
Thursday- 2
Friday – 6
Saturday – 5
Sunday – 14

Join our mailing list: bbclubnews@gmail.com

4 Week Free Trial Memberships

[BBC Certificate of Currency](#)

are available to anyone who has not held an AusCycling membership in the last 3 years.



KEY: GREEN(slow) BLUE(med-fast)
UPCOMING EVENTS

CLICK ON EVENT TO OPEN

WOODBURN

JUL Tue 18th 7AM. Coles, Fox St.

HOUGHLAHANS MTB

JUL Wed 19th 7AM. Coles, Fox St.

WARDELL 2

BROADWATER

JUL Fri 21st 7AM. Coles, Fox St.

RIDERS CHOICE

JUL Sat 22nd 7AM. Henry Rous Tavern

RIDERS CHOICE

BROADWATER

JUL Sun 23rd 7AM. Coles, Fox St.

MOYLANS-WARDELL?

JUL Mon 24th 7AM Coles, Fox St.

Monday Ride Report

- Peter

Nine riders started today, but we all did not end up riding the same route. The ride leader told us which way to ride, but the leader did not follow his own lead. Because of this, five of the nine riders ended up riding an extra ten kilometres. I was one of them, and I was not pleased.

Back at the Proper Cafe, Marc, Michael, and Richard H. bought themselves a hearty breakfast. I could not resist taking a photo of Michael and Richard woofing into it. The photo became this week's *Spot The Difference* challenge.



Tuesday Ride Report

- David and Shorty

Only young Dave was at the start. The ride route was via Pimlico Road and Blackwall drive to Woodburn with return up Kilgin, Bagotville, Wardell Roads and then the freeway to Ballina. The ferry was closed. The ride was easy-peasy which allowed some distance measurement. Woodburn Cafe to end of Kilgin Road 11.2km, then 12.2 km along Broadwater Road and up to the end of Bagotville Road. 5.3km along Wardell Road to the Highway intersection at Wardell. Then 18.55km to Coles in Ballina and 7.75km to Dave's home. Total one way distance Woodburn to home 55km.

Warning. The road at Wardell used for the turn during time trials is newly surfaced and is liberally covered with loose fine blue-metal. Do not attempt a careless high speed entry into this road.

- David

Tuesday 11th Solo ride up Uralba Hill down to Meerschaum to Wardell and onto the ferry. Coming down Meerschaum hill it was hard to see any pot holes due to the road being in the shade. 38.5ks. Found that the shire has built for us the assembly area (South side of the ferry crossing).

- Shorty Brown

Wednesday Ride Reports

- David, Peter and Shorty

Four riders ventured up North Teven and Houghlahans Creek Road. As usual the scenery was impressive. It is always a more than pleasant experience to take in the views in the high country. John, Tom, Garry and Dave had a no stops ride and so were back early for a hot coffee. Anyone with a mountain bike should enjoy this ride immensely so why not give it a go. All welcome regardless of ability.

- David

Marc and I rode our steel bikes to Wardell, Patches Beach, and then to Ballina via the ferry. Moylans Lane is still closed for repairs. I suffered a fair bit due to lack of fitness, but Marc was kind and didn't drop me. We timed our ride well to meet up with the others at the Proper Cafe.

-Peter



Wednesday 12th. Solo ride down the Freeway to Broadwater back up the freeway to Wardell inter change then over the river to home via the ferry. 58.13ks.

- Shorty

Thursday Ride Report

- Shorty

Thursday 13th Ride with Mark D down passed New Italy and the back for coffee at New Italy the back to the Wardell inter change over the bridge to the ferry. For me 111.30ks and Mark 120 odd ks. Head wind both ways.

Friday Ride Report

- David and Shorty

Five riders including Bobby, Tony, Michael, Shane and Dave rode a Pimlico/River Road circuit. Bob is recovering from a leg injury but still did very well on his carbon road bike. We timed it perfectly and arrived at the ferry just as it was departing. Please note that Council have prepared a flat area where bikes can wait OFF ROAD whilst waiting for the ferry. This area is on the right when you arrive at the southern ferry terminal. The Cherry Street Sports Club have purchased a motel in Ballina, but you should be aware that it is NOT the Proper Cafe and therefore does not affect us.

-David

Friday afternoon 14th Solo ride down the freeway towards Woodburn and turning around just before the Woodburn Evens Head bridge and back home along the freeway for 66.Ks.

-Shorty
- Simon

Saturday Ride Report



Five of us rode from Lennox to join the Saturday ride, however, only one other (Craig) turned up. For one of the group (Brett) this was his first ride in 4-5 years. Ouch! The six cruised to Wardell, a rest stop being supplied by Brett being welcomed back by a flat tyre. Lots of chat and laughs on the way with a coffee stop at East Ballina because Brett was cooked. The sag-wagon, courtesy of his wife, turned up just as we were finishing and we continued back to Lennox. Beautiful morning, no pressure, great fun.



Sunday Ride Report

- Simon, David and Shorty

The ride as I saw it... The Sunday morning Vintage ride was cool and crisp. There were five of us at the start; Big Pete, Mark, Marc, John and myself. Mark turned up on a delicious Colnago Master with high spec equipment that was a sight to see. The rest of us rode our trusty steeds.

The course was to the Broadwater rest stop via Wardell and Dungarruba, then back along the highway to Wardell, River Drive to the ferry and coffee in Ballina.

Pete had a couple of mishaps; losing the group and then puncturing as soon as we regrouped and so went home having lost confidence in his rear wheel.



We kept a steady pace till Wardell then John must have got bored and upped the pace. That was the start of the John O'Sullivan Trainride. We all did our best to keep up and every now and then poked our head into the wind, Marc more than the rest, only to have John come to the front again because we were slowing him up! An exhibition of phenomenal power from the oldest of the group. Pete joined us for a laugh and a debrief at the Green Coast Cafe afterwards."



Eight starters lined up for the Broadwater return run. Tom, Mike, Garry, Dave, Dave2, Bobby (electric), Tony and Buster. Tony and Buster turned around just short of Broadwater to conserve the battery in Busters Electric bike.

Speed was typically 27k/hr going down into the headwind and 31-32 on the return leg for the main group and six riders arrived at the ferry together. Tony had a birthday so all the non riders missed a free coffee and some chocolates from ANKA.

-David

Sunday afternoon 16th solo ride down the freeway to Woodburn and back along the freeway with a small but wonderful tail wind. 74Ks.

-Shorty

OTHER BITS & PIECES Click on the 2 images below to open

Hi Pete, I came across this trailer today. You might like to put a link in the Newsletter if you're looking for content. I think this would be a great doco to see if it comes to Australia. Cheers, Simon.

PS. here's another one for a joke...



NOTICE: MOYLANS LANE STILL CLOSED

6-DAY BALLINA (FORECAST). Click image to open METEYE (2478 for Ballina).



Where to Race

Here are a few links for our racing club members to represent our club in:

Byron Bay <https://www.byronbaycycleclub.org.au/home-1> and/or <https://www.facebook.com/byronbaycycleclub/>

Yamba <https://yambacc.tidyhq.com/> and/or <https://www.facebook.com/YambaCC/>

Murwillumbah <https://murwillumbah.tidyhq.com/> and/or <https://www.facebook.com/MurbahCycleClub/>

Grafton <https://grafton.tidyhq.com/> and/or <https://www.facebook.com/graftoncycleclub/>

Grafton Race Calendar (Jul-Sep): <https://drive.google.com/file/d/1nCJEhYz2ZhGNZTezq-T9JNeEmYbPFiOZ/view?usp=sharing>

Lismore Road Race (24th Sep): https://drive.google.com/file/d/1ZRMxGqd5akN0X1j_h-QPZ84N0CwRXZr/view?usp=sharing

Where to Trail Ride

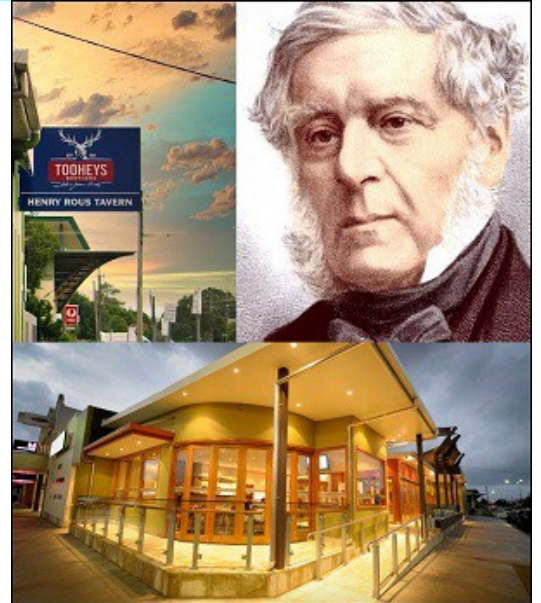
Here are a few links for our MTB club members to represent our club in:

Kyogle MTB Club: <https://www.facebook.com/kyoglemountainbikeclub>

SPONSORSHIP NEWS



THE BICYCLE EMPORIUM
158 River Street Ballina
<http://thebicycleemporium.com.au/index.html>



THE HENRY ROUS TAVERN
177 River Street Ballina
<https://www.henryrous.com.au>

Minor issues with the 'Spot the Difference' puzzles.

It has come to my attention that some subscribers find these Spot The Difference puzzles too difficult or frustrating. From the issues raised the following tips may be of help.

First of all the newsletter is a PDF file and has a zoom-in/out (-+) option, for better/closer searching.

Secondly, to save the frustrated from boiling over, each puzzle has an 'Answer' hyperlink under the puzzle. Click on this link to reveal the answers/solutions to the puzzle. So, if you can't find all ten, then click on the link, wait awhile, and all ten differences will be revealed on an image.

SPOT THE DIFFERENCE The bottom image has 10 alterations. Can you spot them?



Answer: <https://drive.google.com/file/d/1-WJTtRSDEqU17JcnFhwTunlhQqNPvycL/view?usp=sharing>

GET YOUR FREE BBC NEWSLETTER SUBSCRIPTION: email me at... bbclubnews@gmail.com

BBC Newsletter Archives: <https://ballinabicycleclub.org/newsletters-1>

BBC WEBSITE: <https://ballinabicycleclub.org>

Our Disclaimer: *The opinions expressed by contributors in BBC NEWS are theirs alone and do not reflect the opinions of the Ballina Bicycle Club or its Members. BBC is not responsible for the accuracy of any of the information supplied by the contributors....* :)