

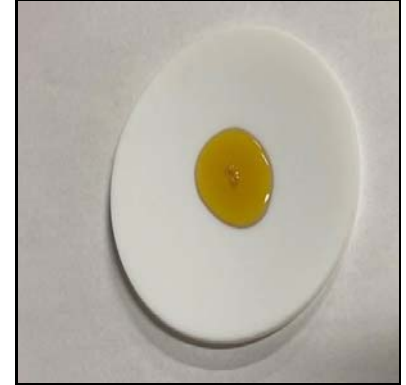
Certificate of Analysis

Client Name: 1 Life Products	Matrix: Tincture
Client Address: 7222 Washington Ave. S, Eden Prairie, MN 55344	Date Received: 4/10/2020 10:43:00AM
Sample ID: 5000mg Full Spectrum	Lab Sample ID: 2001549-02
Lot/Batch #:	Date of Report: 4/21/2020 3:57:34PM

Analysis	Requested (Yes/No)
Cannabinoid Profile	Yes
Terpene Profile	No
Aflatoxins	No
Heavy Metals	No
Residual Solvents	No
Microbial Testing	No
Pesticides	No



Sample, packaged



Sample, actual

Cannabinoid Profile 2001549-02 5000mg Full Spectrum

Analyte	Result	RL	Units	Analysis Method	Date Analyzed	Notes
Cannabichromene (CBC)	0.239	0.0189	% by Weight	HPLC	4/15/20 1:42 pm	
Cannabidiol (CBD)	18.6	0.378	% by Weight	HPLC	4/15/20 9:06 pm	
Cannabidiolic Acid (CBDA)	0.00506	0.00189	% by Weight	HPLC	4/15/20 1:35 pm	
Cannabigerol (CBG)	0.153	0.00189	% by Weight	HPLC	4/15/20 1:35 pm	
Cannabinol (CBN)	0.0180	0.00189	% by Weight	HPLC	4/15/20 1:35 pm	
Delta-9-Tetrahydrocannabinol (d9-THC)	0.260	0.0189	% by Weight	HPLC	4/15/20 1:42 pm	
THCA-A	<0.00189	0.00189	% by Weight	HPLC	4/15/20 1:35 pm	
Total CBD	18.6	0.379	% by Weight	HPLC	4/15/20 9:06 pm	
Total THC	0.260	0.0205	% by Weight	HPLC	4/15/20 1:42 pm	

Sample Narrative: 2001549-02 5000mg Full Spectrum

Based on the density of MCT oil (0.94 g/mL),
4960 mg CBD per 1 oz container
175 mg CBD per mL

Sarah Smestad - Chemist II/Client Manager I

The results in this report apply to the samples analyzed in accordance with the chain of custody document. This analytical report must be reproduced in its entirety. All samples will be retained by Legend Technical Services, Inc. unless consumed in the analysis, for 30 days from the date of this report and then discarded unless other arrangements are made. ISO/IEC 17025:2005 Accredited, A2LA Certificate 2950.01.

Certificate of Analysis

Notes and Definitions

CFU/g	Colony Forming Units per Gram
HPLC	High-Performance Liquid Chromatography
MS	Mass Spectrometry
<	Less than value listed
RL	Reporting Limit
NA	Not Applicable