

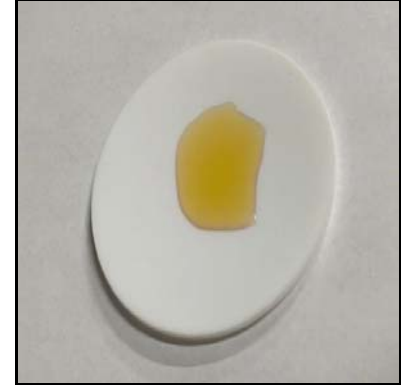
## Certificate of Analysis

<b>Client Name:</b> 1 Life Products	<b>Matrix:</b> Tincture
<b>Client Address:</b> 7222 Washington Ave. S, Eden Prairie, MN 55344	<b>Date Received:</b> 4/10/2020 10:43:00AM
<b>Sample ID:</b> 1000mg Pet Tincture	<b>Lab Sample ID:</b> 2001549-05
<b>Lot/Batch #:</b>	<b>Date of Report:</b> 4/21/2020 4:01:12PM

Analysis	Requested (Yes/No)
Cannabinoid Profile	Yes
Terpene Profile	No
Aflatoxins	No
Heavy Metals	No
Residual Solvents	No
Microbial Testing	No
Pesticides	No



Sample, packaged



Sample, actual

**Cannabinoid Profile**      **2001549-05**      **1000mg Pet Tincture**

Analyte	Result	RL	Units	Analysis Method	Date Analyzed	Notes
Cannabichromene (CBC)	0.115	0.00168	% by Weight	HPLC	4/15/20 2:34 pm	
Cannabidiol (CBD)	3.53	0.0842	% by Weight	HPLC	4/15/20 2:41 pm	
Cannabidiolic Acid (CBDA)	0.00202	0.00168	% by Weight	HPLC	4/15/20 2:34 pm	
Cannabigerol (CBG)	0.0484	0.00168	% by Weight	HPLC	4/15/20 2:34 pm	
Cannabinol (CBN)	0.00854	0.00168	% by Weight	HPLC	4/15/20 2:34 pm	
Delta-9-Tetrahydrocannabinol (d9-THC)	0.122	0.00168	% by Weight	HPLC	4/15/20 2:34 pm	
THCA-A	<0.00168	0.00168	% by Weight	HPLC	4/15/20 2:34 pm	
Total CBD	3.53	0.0857	% by Weight	HPLC	4/15/20 2:41 pm	
Total THC	0.122	0.00316	% by Weight	HPLC	4/15/20 2:34 pm	

**Sample Narrative:**      **2001549-05**      **1000mg Pet Tincture**

Based on the density of MCT oil (0.94 g/mL),  
 940 mg CBD per 1 oz container  
 33.2 mg CBD per mL

Sarah Smestad - Chemist II/Client Manager I

The results in this report apply to the samples analyzed in accordance with the chain of custody document. This analytical report must be reproduced in its entirety. All samples will be retained by Legend Technical Services, Inc. unless consumed in the analysis, for 30 days from the date of this report and then discarded unless other arrangements are made. ISO/IEC 17025:2005 Accredited, A2LA Certificate 2950.01.

## Certificate of Analysis

### Notes and Definitions

CFU/g	Colony Forming Units per Gram
HPLC	High-Performance Liquid Chromatography
MS	Mass Spectrometry
<	Less than value listed
RL	Reporting Limit
NA	Not Applicable