

# The Wick 4-Weekly

What, When, Where, & Who of Village Life

Check out this month's village news, and share your news items with us –

[EWA\\_Committee@outlook.com](mailto:EWA_Committee@outlook.com)

Printed copies of this newsletter are available from the Village Pharmacy, the Corner Café, Hair by Us, Eton Wick Football & Social Club, the Village Hall foyer, and the Library.



Hi everyone

I hope you are all well. I think finally, Spring has arrived!!! Hasn't it been so cold up until now? I'm planning on planting up my allotment this weekend, so fingers crossed the weather stays fine.

Talking about plants and sunshine, it seems a very good time to update you on the progress of the hanging baskets and planters in Bell Lane. For a third year we have managed to secure sponsorship from the community. The baskets and planting in Bell Lane will be arriving in around mid-May and will be with us until about October. I would like to thank the following for sponsoring the baskets and planters:

- |                           |                        |                              |
|---------------------------|------------------------|------------------------------|
| ○ Rob & Joanne Jones      | ○ Ken Robertson        | ○ One Stop Shop              |
| ○ Zainab Sadiq            | ○ Ginger Jollies       | ○ Lindsey Pardoe             |
| ○ Lorraine & Rob Rough    | ○ The Village Hall     | ○ Jackie Watts               |
| ○ Jenny & Des O'Donoghue  | ○ Alison Hill          | ○ The Village Pharmacy       |
| ○ Heather & Digby James   | ○ Rick & Lucy Ludovici | ○ The Corner Café            |
| ○ Dawn & Simon Kane       | ○ Eton Wick Youth Club | ○ Portia Financial Solutions |
| ○ Helen Branscombe-Davies | ○ Ella's Party Shop    |                              |

Thank you to all of you for making this work.

Still on the topic of flowers, a warm village welcome to **Florists of Eton** who moved into Eton Wick last week. What a lovely addition to the village. It really brightens the area. They are open Monday to Friday 9am to 5pm, and 9am to 2pm on Saturdays. Their website [floristsofeton.co.uk](http://floristsofeton.co.uk) shows everything they can do for you for all sorts of occasions.

On Friday 8<sup>th</sup> May there will be a quiz night at the Village Hall. Doors open at 7pm and start at 7.30. It costs £2 each, with tables of 6 people available. Just turn up!!! Bring your own drinks and snacks. There will be prizes and a raffle. Hope to see you all there.

Join us for a Village Litter Pick on Sunday 10<sup>th</sup> May - 10am to 12 noon - meet at the Village Hall. All equipment will be provided, so just bring yourself and a smile. If you've never volunteered before, now's the perfect opportunity to get involved, meet your neighbours, and help keep our village looking its best. Let's work together and make a real difference - everyone is welcome.

Don't forget Slimming World is now in the village for those of you who want to beach body ready for the summer!!! The meeting is on Tuesdays at 7pm at the Village Hall.

That's it for now. Hope to see you around the village in the warmer weather.

**Lucy Ludovici, EWVA Chair**

*Gather. Think. Laugh.*  
THE PERFECT NIGHT OUT!

**QUIZ NIGHT**

**FRIDAY 8TH MAY**

DOORS OPEN AT 7PM  
QUIZ STARTS AT 7:30PM

ETON WICK VILLAGE HALL

TEAMS OF UP TO 6

JUST £2 PER PERSON

CASH PRIZE & RAFFLE!

BRING YOUR OWN DRINKS  
to enjoy during the quiz!

NO NEED TO BOOK - just turn up!

Everyone welcome!

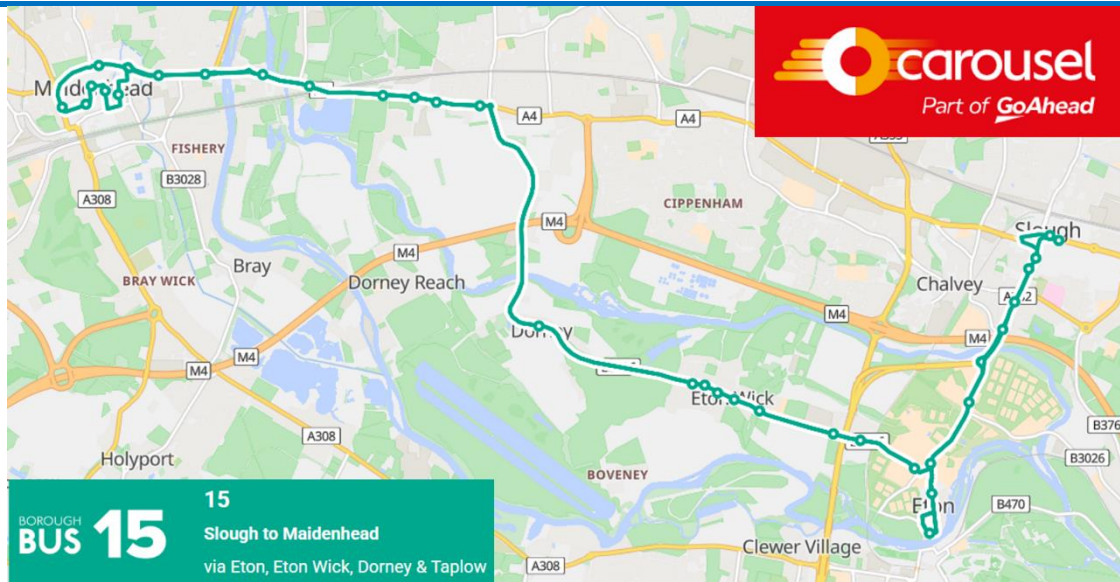
CONTACT: CLARE - 07961 020269

Back in January, Carousel Buses announced that they had listened to customer feedback and introduced major improvements to connectivity on several routes. The Eton Wick bus, service 15, was extended beyond Slough, Eton, Eton Wick, Dorney and Taplow to Maidenhead via the A4. Buses operate every hour, and earlier and later journeys were added to the timetable to provide more journey opportunities for commuters along the route.

This isn't new news ... however we have received feedback that many village residents are not aware of the service. The more the service is used the greater chance we have got it continuing or even being further improved.

Carousel want to further improve local bus services so please take a couple of minutes to complete their survey and let them know your thoughts.

<https://www.carouselbuses.co.uk/customer-satisfaction-survey>



[Download the timetable](#)

<https://www.carouselbuses.co.uk/services/CSLB/15>

## Eton Wick Football & Social Club

If you would like to become a member of EWF&SC, please see bar staff for a membership form.

We have great facilities and activities:

- Bingo every Wednesday at 8pm start
- **Live Ruby and Sky Sports** showing all sports not just football!
- Dart board and pool table
- Hall Hire (see bar staff for form)
- Live Music Nights

Our usual opening hours are shown below:

- Monday & Tuesday – closed
- Wednesday & Thursday – 4pm to 10.30pm
- Friday – 4pm to 11pm
- Saturday – 12 noon to 11pm
- Sunday – 12 noon to 9.30pm



**23<sup>rd</sup> May Beatles & Buddy Holly tribute act from 8.30pm**  
**£5 members, £8 non-members**

See the EWF&SC FB page for more information on forthcoming events.

<https://www.facebook.com/groups/391970034327592/>

Charlotte Doore, Club Secretary



Eton Wick U17's won their Cup Final and are Champions of their League this week. Well done to everyone involved from squad, family, Management and our supporters. It's been a proud moment.

On Saturday 9<sup>th</sup> May we celebrate our team player Mark who retires from men's football after many years playing football. We play our last home game of the Season against Mark's last club Datchet. We are dedicating the game to Mark and Leanne's son and supporting Epilepsy in Young Children. There is a raffle. If you can, please come and support.

Eton Wick Men's team would like to say a huge thank you to our local Eton One Stop for sponsoring a couple of our match day games. Thank you to 311 Window Film and Manifestation Ltd for their support on our Showcase game at Slough Town back in March. Thank you to the Football and Social Club for their support and not least our supporters. You know who you are.

**Helen Beckett, Club Secretary**

## Eton Wick Allotment Association



Do you like gardening but don't have a garden? Do you like being in the fresh air surrounded by nature? If you like fresh homegrown vegetables, fruit and flowers then an allotment could be the answer.

The Eton Wick Allotment Association site is off Bell Lane, and we have some plots available, with a little hard work they can become very productive and produce plenty of lovely veggies for you and your family.

If you would like to find out more, please email [secretary@ewaa.co.uk](mailto:secretary@ewaa.co.uk)

**There have been recent reports of unaccompanied young children (under 16s) seen on the allotment site in Bell Lane. Please note that while families and accompanied children are welcome to come to the allotments for a chat and information about taking on a plot, unaccompanied children aged 16 and under are not permitted to visit unless accompanied by an adult allotment plot holder.**

### Eton Wick History Group

Wednesday 27<sup>th</sup> May 2026  
7.30pm in Eton Wick Village Hall

White Waltham Airfield ~ 90 years of  
Aviation History. Speaker: Richard Poad



Entrance Fee £4 which includes light refreshments.  
Raffle ~ £1 per strip. Cash only for both please.



We were delighted to welcome five new members during April and hope to see our numbers grow over the coming months. Do pop along to see what we are about as we are a super friendly, relaxed, and inclusive club.

The age range is 8-14, with sessions starting at 6pm and running until 7.45pm every Monday during term time on the ground floor of Eton Wick Village Hall and the attached Sports Hall. Subs only £1.50 per session plus a great value tuck shop. No charge for any activities.

Contact Helen on 07764 821130 or email EWYC-Committee@Outlook.com or message on FB.

<https://www.facebook.com/EWYouthClub>

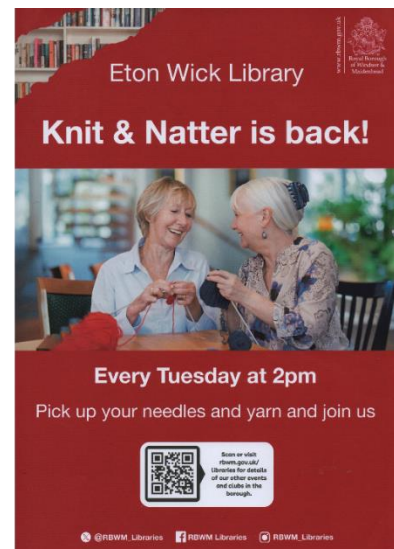
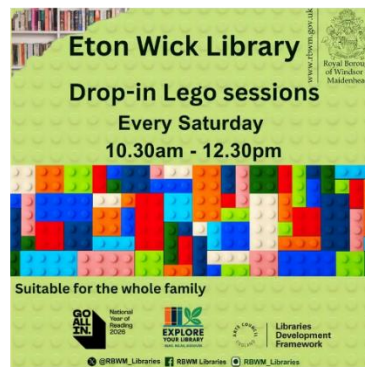
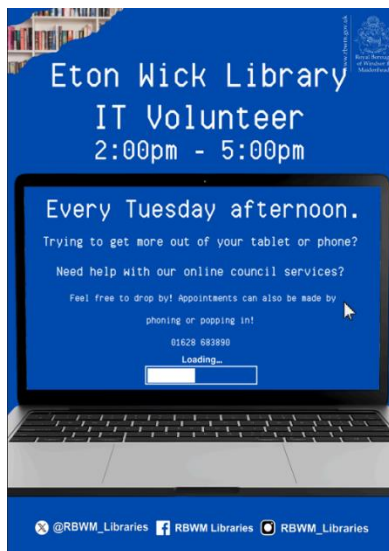
**Helen Branscombe-Davies, EWYC**

## Eton Wick Library

Open Tuesdays 14:00-17:00 and Saturdays 10:00-13:00

Knit 'n' Natter group meet every Tuesday, 14:00-15:30

Lego Club every Saturday 10:30-12:30



Contact the Library on 01628 683890 or visit our village website for more information:

<https://ewva.org.uk/ew-library>

## Weddings at Eton Town Council Chamber



Eton Town Council Chamber is a licensed venue offering an affordable and truly unique setting for smaller bespoke ceremonies.

[bookings@etontowncouncil.gov.uk](mailto:bookings@etontowncouncil.gov.uk) - Clerk 01753 860377

**Eton Wick Village Hall**  
**Regular hirers and their contact details**

<b>Mon</b>		<b>Indoor Bowls</b> 13:00 - 15:00 Chris 01753 863190	<b>Yoga</b> 18:00 - 20:15 Michelle Jones 07791 346298
<b>Tue</b>	<b>Pilates</b> 09:30 - 10:30 Simona Stojkova 07917 103856		<b>Slimming World</b> 18:00 – 21:00
<b>Wed</b>	<b>Boot Camp/Keep Fit</b> 09:00 – 10:00 Michelle Jones 07791 346298		<b>Step Class</b> 18:45 - 19:30 Michelle Jones 07791 346298
<b>Thu</b>	<b>Art</b> 10:00 - 12:00 Sandra Drummond 01753 857492		<b>Susan Handy Dance</b> 17:00 - 21:00 07515 270432
<b>Fri</b>	<b>Fit Steps</b> 09:45 - 10:45 Michelle Jones 07791 346298	<b>Art</b> 10:45 - 13:45 Sandra Drummond 01753 857492	
<b>Sat</b>			
<b>Sun</b>	<b>Church Group</b> 09:00 - 10:00 (for 6 months)		

If you are interested in any of the groups/classes, please contact the organiser directly, details above.  
 (\*Please note it can be necessary to book months in advance to hire the hall for a Saturday or Sunday.)



### **Eton Wick Waterways Group**

**Riparian residents are reminded that to keep the river flowing we need to avoid anything being thrown into it, such as branches, grass cuttings or weeds, as these will get caught up further downstream causing potential blockages.**

For information about volunteering, please contact us at:

[EWVG-committee@outlook.com](mailto:EWVG-committee@outlook.com)

Find us on the village website, and on Facebook, links below.

<https://ewva.org.uk/ew-waterways-group>

<https://ewva.org.uk/https://www.facebook.com/EtonWickWG>

### **Environment Agency**

You can report some environmental problems on GOV.UK via the Environment Agency's online reporting service, 'Report an environmental problem', which makes reporting more convenient and accessible to everyone. Alongside their telephone incident hotline, the online service offers you an additional way to report environmental problems that are within the Environment Agency's remit, instantly on any device. Copy the link below to your phone to use when you see an incident that needs reporting.

[https://engageenvironmentagency.uk.engagementhq.com/report\\_an\\_environmental\\_problem](https://engageenvironmentagency.uk.engagementhq.com/report_an_environmental_problem)

### **Other ways to report environmental problems**

**Online:** Visit <https://www.gov.uk/report-environmental-problem>

**Phone:** call the national incident hotline on 0800 80 70 60 (24-hour service)

**Useful Info:** <https://engageenvironmentagency.uk.engagementhq.com/your-watercourse-rights-and-roles>

### **Thames Water**

Thames Water report known incidents of water pollution from the Slough Sewage Treatment Works using the EDM map, which can be found here:

<https://www.thameswater.co.uk/edm-map>

To learn more about Thames Water's incident reporting, check out the link below:

<https://www.thameswater.co.uk/about-us/performance/river-health/storm-discharge-and-event-duration-monitoring>

**Laura Regazzacci, EWWG**



For details of local planning applications, the link below takes you to the “Find a planning application” page of the RBWM website.

<https://www.rbwm.gov.uk/home/planning-and-building-control/find-planning-application>

You need to enter the reference, shown below, to find details for each individual application, or you can type Eton Wick into the location search bar and view a summary of all current applications.

Only applications currently awaiting decision, which have not been previously featured in this newsletter are shown below, please visit the website to view applications for which decisions have been made.

**Reference - 26/00606/FULL – application validated 9 April 2026 – awaiting decision**

38 Tilstone Close, Eton Wick, Windsor SL4 6NG

1no. side dormer, hip to gable and alterations to fenestration.

**Reference - 26/00970/FULL – application validated 28 April 2026 – awaiting decision**

1 Colenorton Crescent, Eton Wick, Windsor SL4 6NW

Garage conversion, 2no. single storey side/rear extensions and alterations to fenestration.

**Reference - 26/01045/FULL – application validated 28 April 2026 – awaiting decision**

1 Tilstone Close, Eton Wick, Windsor SL4 6NG

Single storey side/rear extension following demolition of existing elements.



Our local police team cover Windsor Central, Eton + Eton Wick as shown on the map.



A crime map can be viewed on the police website, and you can zoom in and click on each to see the type of crime that was reported. Currently the map shows up to end March 2026 activity.

If you have any information around any incidents shown on the police website, or would like to report a different incident, please call 101 or visit the police website - <https://www.thamesvalley.police.uk/> If it is an emergency, please call 999.

Below is a link to the email address to sign up to get ‘TV ALERT’ emails with crime prevention advice and neighbourhood updates. Please register for information relevant to where you live and in what you are interested.

[Home Page - Thames Valley Alert](#)

You can view the crime map, plus report ASB and other non-emergency crime on-line, using the link below:

<https://www.thamesvalley.police.uk/area/your-area/tvp/berkshire-east/windsor-central/about-us/top-reported-crimes-in-this-area>



For more information on Neighbourhood Watch and to join the Eton Wick scheme, please visit the village website, link below.

<https://ewva.org.uk/ew-neighbourhood-watch>

Use the links below to read the most recent editions of the monthly national NHW newsletter.

March - [Our News - March 2026 | Neighbourhood Watch Network](#)

April - [Our News – April 2026 | Neighbourhood Watch Network](#)



#### Home

Village Groups <  
Events & Volunteering  
The Wick 4-Weekly  
Community Meetings  
Village Maps  
Contact Us

EW Village Association  
EW Waterways Group  
EW Youth Club  
EW Scouts  
EW Allotment Association  
EW History Group  
EW Neighbourhood Watch  
EW Library  
Our Village Friends  
Local Businesses  
EWY&C CIO



Are you a village resident and local trader? A beautician, plumber, builder, carpenter, electrician, mechanic, hairdresser, gardener, financial adviser, or something else. Do you want to advertise your services to our community? If yes, contact us for **FREE** space on the Village website.

[EWVA\\_Committee@outlook.com](mailto:EWVA_Committee@outlook.com)



*If you have a neighbour who is not online, please let them know they can collect paper copies of this newsletter from several locations in our village centre including the library. You could deliver the newsletter to someone who is less mobile to help them stay connected with local information.*

*If you are a member of a local group that would like to be included in this newsletter, please do get in touch. Our mission is for this newsletter to be all-inclusive, collaborative, and mutually supportive ... representing our whole community.*

*We include useful local information links at the end of the newsletter for your information and convenience. Thank you for reading.*

**Helen Branscombe-Davies, Secretary EWVA**

## CONTACT DETAILS FOR VILLAGE SHOPS & LOCAL SERVICES

The Village Pharmacy – 01753 863575

South Meadow Surgery, Eton – 01753 864545

Eton Wick Library - 01628 683890

Eton Wick Post Office (located inside Nisa) – 01753 863631

Eton Driving School – 07904 184451

Nails to Tails Dog Salon – 07395 107050

Jade Garden Fish & Chips + Chinese Takeaway – 01753 850991

Royal Spice – 01753 830260

The Greyhound – 01753 868633

Pipedreams – 01753 865682

Ella's Party Shop – 01753 378418

Little Me Preschool and Wrap Around Care – 07526 303103

GingerJolley Pre-School – 07716 664933

Feet by Clare (registered foot health practitioner) – 07961 020269

Hair By Us – 01753 831957

PMU Windsor (Permanent Make Up - operates from Hair by Us) - [pmuwindsoruk@gmail.com](mailto:pmuwindsoruk@gmail.com)

Kelleyway Carpentry Services – Carpenter/General Builder – 07900 642270

**More information on the “local retailers and businesses” page of the village website, link below:**

<https://ewva.org.uk/local-businesses>

---

## USEFUL LINKS

Eton Town Council

<https://www.etontowncouncil.gov.uk/>

RBWM Report-It

<https://www.rbwm.gov.uk/home/apply-pay-report/report-it>

To report potholes to RBWM use the link below. Information you will need is: The location of the pothole. Whether it is on the road or pavement. The approximate size. Your contact details if you want to be updated on progress. Upload a photo if you have one.

<https://www.rbwm.gov.uk/transport-and-streets/roads-and-pavements/report-pothole>

To report potholes on Dorney Common and road to Sainsbury's use the Buckinghamshire council link below.

<https://fixmystreet.buckinghamshire.gov.uk/>

Thames Valley Police - Report a Crime

<https://www.thamesvalley.police.uk/ro/report/ocr/af/how-to-report-a-crime/>

Local Bus Services

<https://www.rbwm.gov.uk/home/transport-and-streets/public-transport/bus-routes>

<https://www.carouselbuses.co.uk/services/buses-in-and-around-slough>

<https://www.thamesvalleybuses.com/services>

<https://www.slough.gov.uk/buses>

RBWM Highways Works

<https://www.rbwm.gov.uk/home/transport-and-streets/roads-and-pavements/council-works-highway-week>

For all local roadworks, including work by utility firms visit One Network

<https://one.network/>

Household Waste Collection Information + Bin Collection Day

<https://www.rbwm.gov.uk/home/environment-and-waste/recycling-and-rubbish/household-rubbish-collections>

<https://www.rbwm.gov.uk/binday>

Thames Water – Report a Problem

<https://www.thameswater.co.uk/help/report-a-problem#/view-and-report-problems>

Reporting environmental incidents, including pollution and damage to the natural environment.

<https://www.gov.uk/report-an-environmental-incident> - or call the 24/7 hotline 0800 80 70 60

Age UK may be able to provide you with direct support. The services and facilities on offer vary from area to area, but can include: • information and advice • help at home schemes • befriending schemes • advocacy services • handyperson schemes • nail-cutting services • transport schemes • help with claiming benefits • exercise classes • day centres.

[www.ageuk.org.uk](http://www.ageuk.org.uk) – or call 0800 169 6565

Citizens Advice have a national network of centres offering free, confidential, and independent advice, face-to-face or by telephone. Visit the website for full information and to find the nearest Citizens Advice Bureau.

[www.citizensadvice.org.uk](http://www.citizensadvice.org.uk) – or call 0800 144 8848

MoneyHelper - gives impartial information about financial products and services and offers tips on everyday money management.

[www.moneyhelper.org.uk](http://www.moneyhelper.org.uk) – or call 0800 138 7777

Action Fraud - National reporting centre for fraud and internet crime. Use the online fraud reporting service and get a police crime reference number. Call the helpline for advice on preventing fraud and how to report it if it happens to you. [www.actionfraud.police.uk](http://www.actionfraud.police.uk) – or call 0300 123 2040

---