

# The Wick 4-Weekly

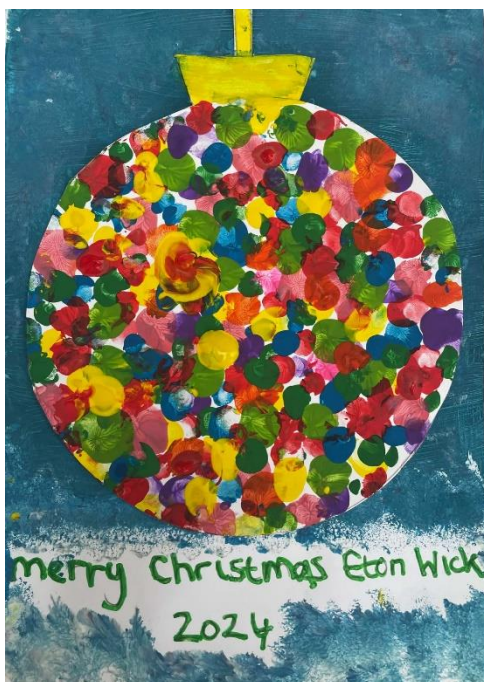
What, When, Where, & Who of Village Life

---

Check out this month's village news, and share your news items with us –

[EWVA\\_Committee@outlook.com](mailto:EWVA_Committee@outlook.com)

Printed copies of this newsletter available from the Village Pharmacy, Hair by Us, and the Corner Café



Christmas Card designed by Reggie of Sheepcote Road and Tommy of The Walk, both age 4

---

Dear Eton Wickers

*What a fabulous evening we had last night at the Christmas light switch on event in the village. The community turned out in force to listen to our very own RCCG church singers based in the village and the children who dance at ERA Dance Academy based in the Village Hall. Both were brilliant. The Corner Cafe also played a large part in the evening as well. We 'borrowed' their electricity for the event, and they were very generous by giving out hot soup to the community. Thank you to all of you for your contribution.*

*I would also like to thank Janice, who is part of the Eton Wick Village Association, for arranging the whole evening. She is our Christmas star who sorts out everything over the year to make the evening work.*

*We raised just under £250 from the event which will be used for EWVA funds throughout the year.*

*As to other events for 2025.*

*On Saturday 1st March there will be a disco at the Village Hall. More details will be released in the New Year, but please put it into your 2025 calendar's now.*

*As promised the next Bingo night in aid of the hanging basket bracket fund will be on Friday 28th March. This will be just in time for us to order the brackets for the village and get sponsorship for the baskets. Put it in your diaries !!!*

*2024 has been a great community year. The Youth Club got back to their spiritual home in the ground hall of the Village Hall and continues to go from strength to strength. There was another very successful football academy run by the Eton Town Council in the summer, lots of Waterway's activity including clearing of the rivers by Thames Water, and the introduction of the hanging baskets which have been a real hit. There has also been lots of fundraising taking place for community groups. A group from the village cycled from London to Brighton raising about £2000 for the Youth Club. The Firework committee nominated the Youth Club as their charity of*

---

the year. The evening raised about £2000 for the club, and Bingo night raised about £550 towards the hanging basket bracket fund for next year. Lots more to come in 2025. All proceeds to our fund raising are ploughed back into our village to improve life of our community.

Finally, all there is to say is Happy Christmas. I hope you have a lovey break whatever you are doing.

See you all in 2025.

Lucy Ludovici

Chair, Eton Wick Village Association



The annual Christmas Box event this year will follow a similar format to previous years.

**PLEDGE A BOX OR TWO** - If you can make up a box or two, please comment on the Facebook post on an EW group page. Then arrange to drop off the completed box(es) at the GREYHOUND PUB the week commencing Monday 16th December - no later than Thursday 19th December – as boxes will be distributed on Saturday 21st December.

The fantastic Christmas card shown at the top of this newsletter was designed by two young students at Eton Wick First School, both aged only four, and will be in every box. Both Reggie and Tommy will help on delivery day.

**NOMINATE SOMEONE** - If you would like to nominate someone please direct message only their name and address, plus please inform the person you are nominating that delivery will be on Saturday 21st December between 12:00-16:00.

**THE FUN BIT** – There is no right or wrong way to make up a box - think harvest festival with a Christmas theme. As for the contents the only thing we ask is nothing perishable. Suggestions - Tea - coffee - sugar - tins of soup - meats fish – biscuits - mince pies - chocolate bars - word search books - Christmas crackers - the list is endless. Maybe include a Christmas card from your family to theirs ....

Many thanks in advance and happy box making – and don't forget to look out for Reggie or Tommy on delivery day !



Water levels on our waterways have been running higher in the last week, due to persistent heavy rainfall and an increased outflow from Thames Water treatment works. residents can check if the Slough treatment works have reached full storage capacity by visiting the EDM tracker [EDM Map](#) | [Storm discharge data](#) | [River health](#) | [Thames Water](#).

After negotiations with a new project management team, Thames Water have now committed to clearing the Roundmoor and Boveney rivers twice annually until the planned improvements to processing and storage of effluent at the Slough Treatment Works prevent any future sewage releases into the Roundmoor. Their contractors have now cleared dense weed from Boveney and Roundmoor for a second time this year. Some issues have been identified along this watercourse including low bridges and fallen trees, which have prevented some sections from being cleared. However, the overall effect of the weed culls has been to reduce the resistance to flow, allowing water to flow faster to the Thames and therefore mitigate against winter and spring storm overflows. The issue of flooding on the footpath between Eton Wick and Cippenham should be addressed by Slough Council who own the land and the EA who were responsible for its alteration over the Jubilee, and both been made fully aware by us of their responsibility to safeguard residents who use this path regularly for work, school and shopping.

As already mentioned in the last newsletter, Thames Water are developing a major project at the Slough Water Treatment Works which will increase their capacity to treat and store effluent. Work is likely to start at the end of 2025. No firm date yet for completion but we understand that this project is being fast tracked by Thames Water. They have been asked to present their project either online or in person and to engage with residents who will be affected, as promised in the original planning proposal of 2022.

<https://engageenvironmentagency.uk.engageenthq.com/your-watercourse-rights-and-roles>

Please contact us at [info@etonwickwaterwaysgroup.org](mailto:info@etonwickwaterwaysgroup.org) if you would like to join us in campaigning or volunteering in any capacity. Plus, find us on the village website, and on Facebook, links below.

<https://ewva.org.uk/ew-waterways-group>

<https://ewva.org.uk/https://www.facebook.com/EtonWickWG>

Environment Agency incident hotline – call 0800 80 70 60 (24-hour service)



Eton Wick Youth Club meets from 6pm to 7.45pm every Monday during term time on the ground floor of Eton Wick Village Hall. Ages from 8-14, subs only £1.50 per session, and an excellent value tuck shop. No additional charge for any activities.

The last session for 2024 will be on Monday 16<sup>th</sup> December, and the first in the New Year will be Monday 6<sup>th</sup> January.

The Volunteers are currently planning activities for 2025 to include some special events outside of the usual Youth Club sessions which will be funded by the very generous donation received from the London to Brighton cyclists. Money raised at the Eton Wick Fireworks will be used for supplies and equipment for our regular Monday evening sessions. Our young members will benefit from every penny donated – THANK YOU everyone.

[EWYC-Committee@Outlook.com](mailto:EWYC-Committee@Outlook.com)

<https://www.facebook.com/EWYouthClub>

**CHRISTMAS FAIR**  
**Santa, Shop & Sip!**  
**Saturday 7th December**  
**RAFFLE. GAMES. STALLS. FOOD & DRINK.**  
**Free Entry**  
**Santa's Grotto**  
**£6 per child to meet Santa\***  
**£3 per additional child**  
**Scan here to book your Santa's Grotto Ticket**  
(includes 1 group photo with Santa & 1 gift per child)  
or visit [pta-events/friendsotetowrickschool](https://pta-events/friendsotetowrickschool)  
**Eton Wick CofE School Hall**  
**12pm - 2.30pm**  
\*Fully DBS checked  
Registered charity number: 309540  
All money raised goes to Eton Wick CofE First School





Eton Wick Men's have a home fixture this Saturday the 7th. The Wick have been playing away these past 4 weeks.

They have had a couple of very good away wins which boosts the moral in the camp. The remaining Saturdays in December we will be playing away. The Christmas Break begins on the 21st December until the first week in January. Our fixtures have not been published as we go to print.

Merry Christmas to you all not least to our supporters who come and support in whatever weather it is on the day.

Come along to the **Eton Wick Football & Social Club**, open Wednesday to Sunday every week. It is great value and brings regular community activities and live music to our village. Opening hours as below.

Monday & Tuesday – closed

Wednesday & Thursday – 4pm to 10.30pm

Friday – 4pm to 11pm

Saturday – 12 noon to 11pm

Sunday – 12 noon to 9.30pm

See the EWF&SC Facebook page for information on forthcoming social and soccer events.

<https://www.facebook.com/groups/391970034327592/>

*Friends of Eton Wick School Charity*

# CHRISTMAS RAFFLE

£1 per entry

Draw will be held on 7th December 2024 at  
Eton Wick CofE First School

**1st Prize: Ascot Racecourse Day Out**  
**2nd Prize: Meal for 4 at the Palmer Arms**

*Other prizes include:*

- Meal at Golden Curry
- Swim Passes at Windsor Leisure Centre
- £25 Daniels voucher
- Free set of Bio Gel Nails
- Photoshoot with Fiona George Smith
- Cut & Blow Dry with Hair by Us
- Gift from Frost
- Free Classes with Michelle's fitness
- Meal at The Pineapple
- Beauty treatments from PMU
- Hobbledown Heath Tickets
- Ella's Party Shop voucher
- Popstar Academy voucher
- Cafe Nero VIP vouchers
- Escape Room
- Simon James discount
- Cakes from Monster Munchies
- Gel Manicure
- Magical Minds Tuition voucher
- Venture Photography

SCAN HERE TO ENTER

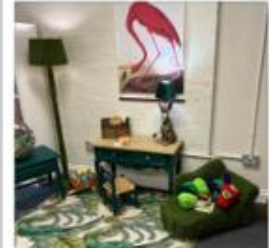


or visit [pta-events.co.uk/friendsofetonwickschool](https://pta-events.co.uk/friendsofetonwickschool)

Registered charity number: 309540

Registered under the Gambling Act 2005 with RBWM Council, Licence No. SL00059

## GingerJolley Nursery coming to Eton Wick Village hall in the New Year!

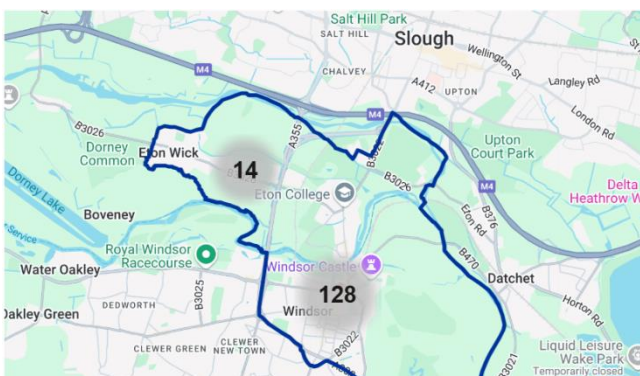


For More Information please  
Email:  
[gingerjolleycms@yahoo.com](mailto:gingerjolleycms@yahoo.com)  
F.A.O Heather-Eton Wick



### Local Crime Incidents

A crime map can be viewed on the police website. This is the map for Eton Wick, October 2024. You can zoom in and click on each to see the type of crime that was reported. If you have any information around these incidents, or would like to report a different incident, please call 101 or visit the police website - <https://www.thamesvalley.police.uk/> If it is an emergency, please call 999.



Below is a link to the email address to sign up to get 'TV ALERT' emails with crime prevention advice and neighbourhood updates. Please register for information relevant to where you live and in what you are interested. Our local police sergeant posts bi-weekly updates on the neighbourhood team's activity.

[Home Page - Thames Valley Alert](#)

[Windsor Central | Your area | Thames Valley Police | Thames Valley Police](#) – this is you can report ASB, and other non-emergency crime on-line.



For details of local planning applications, the link below takes you to the “Find a planning application” page of the RBWM website.

<https://www.rbwm.gov.uk/home/planning-and-building-control/find-planning-application>

You need to enter the reference, shown below, to find details for each individual application, or you can type Eton Wick into the location search bar and view a summary of all current applications.

**Reference - 24/02680/Full – application validated 5 November 2024 – awaiting decision**

11A Tilstone Close, Eton Wick, Windsor SL4 6NG

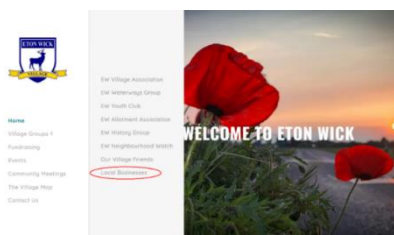
Part single part two storey rear/side extension and alternations to fenestration following demolition of existing elements.

**Reference - 24/02639/Full – application validated 6 November 2024 – awaiting decision**

20 South View, Eton Wick Road, Eton, Windsor SL4 6PF

Raising of the existing front boundary fence and new automated sliding gate to the side boundary (retrospective).

(No other new applications since the November newsletter.)



Are you a village resident and local trader? A beautician, plumber, electrician, mechanic, hairdresser, gardener, financial adviser, or something else. Do you want to advertise your services to our community? If yes, contact us for space on the Eton Wick Village website. PLUS, we can add a local trader’s section to the bottom of this e-newsletter, again please contact us if you want to promote your services to the Eton Wick community.

[EWWA\\_Committee@outlook.com](mailto:EWWA_Committee@outlook.com)

**Eton Wick Village Hall**  
Regular hirers and their contact details

	Morning	Afternoon	Evening
<b>Mon</b>		Short Mat Indoor Bowls 2 ~ 4pm  Chris 01753 863190 Dave 01753 863710	6 ~ 7pm Yoga/Pilates 7.15 ~ 8.15pm Yoga/Pilates Michelle Jones 07791 346 298
<b>Tue</b>	9.30am ~ 10.30am Pilates		6.30pm ~ 8pm Ashley Jansen School of Traditional Karate 07963 433 643
<b>Wed</b>	9am ~ 10am  Body Conditioning  Michelle Jones 07791 346 298		The History Group 7.30pm (5 events per year)  Eton Wick Village Association 7.30pm several times a year
<b>Thu</b>	Art Group 10am ~ 12 noon Sandra Drummond 01753 857492		Susan Handy School of Dance 07515 270 432 Modern & Tap Classes and Commercial and Theatre Jazz
<b>Fri</b>	9.45am ~ 10.45am Fit Steps Fab  No partner needed. For all who love to dance and keep fit  Michelle Jones 07791 346 298	[Private booking]  Art Tutorials  Two 8-week courses  Spring & Autumn	Enchanted School of Dance 07702 268 729 Junior Musical theatre (4-6 years) 3.45 ~ 4.15pm Senior Musical theatre (6-10 years) 4.30 ~ 5.15pm Senior Cheerleading (6-10 years) 5.15 ~ 6pm
<b>Sat</b>	Available for hire *		
<b>Sun</b>	Available for hire *		

If you are interested in any of the groups/classes held in the hall, they would be pleased to hear from you. For more information or to book the hall please visit our website: [www.etonwickvillagehall.com](http://www.etonwickvillagehall.com) or phone 07949 147 846

**\*Please note it is often necessary to book months in advance to hire the hall for a Saturday or Sunday booking.**





*If you have a neighbour who is not online, please let them know they can collect paper copies of this newsletter from Eton Wick Pharmacy, Hair by Us, and the Corner Café in the village centre. You could pick up a copy for them to help them stay connected with local information.*

*If you are a member of a local group that would like to be included in this newsletter, please do get in touch. Our vision is for the newsletter to be all-inclusive, collaborative, and mutually supportive ... representing our whole community.*

*We include useful local information links at the end of the newsletter for your information and convenience. Thank you for reading.*

*Secretary EWVA - Helen Branscombe-Davies*



---

## CONTACT DETAILS FOR VILLAGE SHOPS & LOCAL SERVICES

The Village Pharmacy – 01753 863575

South Meadow Surgery, Eton – 01753 864545

Hair By Us – 01753 831957

Jade Garden Fish & Chips + Chinese Takeaway – 01753 850991

Royal Spice – 01753 830260

Pipedreams – 01753 865682

Ella's Party Shop – 01753 378418

Eton Wick Post Office (located inside Nisa) – 01753 863631

Little Me Preschool and Wrap Around Care – 07526 303103

GingerJolley Pre-School – 07716 664933

The Greyhound – 01753 868633

**More information on the “local retailers and businesses” page of the village website, link below:**

<https://ewva.org.uk/local-businesses>

---

---

## USEFUL LINKS

Eton Town Council

<https://www.etontowncouncil.gov.uk/>

RBWM Report-It

<https://www.rbwm.gov.uk/home/apply-pay-report/report-it>

Thames Valley Police - Report a Crime

<https://www.thamesvalley.police.uk/ro/report/ocr/af/how-to-report-a-crime/>

Local Bus Services

<https://www.rbwm.gov.uk/home/transport-and-streets/public-transport/bus-routes>

<https://www.thamesvalleybuses.com/services>

<https://www.slough.gov.uk/buses>

RBWM Highways Works

<https://www.rbwm.gov.uk/home/transport-and-streets/roads-and-pavements/council-works-highway-week>

For all local roadworks, including work by utility firms visit One Network

<https://one.network/>

Household Waste Collection Information + Bin Collection Day

<https://www.rbwm.gov.uk/home/environment-and-waste/recycling-and-rubbish/household-rubbish-collections>

<https://www.rbwm.gov.uk/binday>

Thames Water – Report a Problem

<https://www.thameswater.co.uk/help/report-a-problem#/view-and-report-problems>

Reporting environmental incidents, including pollution and damage to the natural environment.

<https://www.gov.uk/report-an-environmental-incident> - or call the 24/7 hotline 0800 80 70 60

Age UK may be able to provide you with direct support. The services and facilities on offer vary from area to area, but can include: • information and advice • help at home schemes • befriending schemes • advocacy services • handyperson schemes • nail-cutting services • transport schemes • help with claiming benefits • exercise classes • day centres.

[www.ageuk.org.uk](http://www.ageuk.org.uk) – or call 0800 169 6565

Citizens Advice have a national network of centres offering free, confidential, and independent advice, face-to-face or by telephone. Visit the website for full information and to find the nearest Citizens Advice Bureau.

[www.citizensadvice.org.uk](http://www.citizensadvice.org.uk) – or call 0800 144 8848

MoneyHelper - gives impartial information about financial products and services and offers tips on everyday money management.

[www.moneyhelper.org.uk](http://www.moneyhelper.org.uk) – or call 0800 138 7777

Action Fraud - National reporting centre for fraud and internet crime. Use the online fraud reporting service and get a police crime reference number. Call the helpline for advice on preventing fraud and how to report it if it happens to you. [www.actionfraud.police.uk](http://www.actionfraud.police.uk) – or call 0300 123 2040

