

See page 2 for List of Components.
 36" Bungee Cords not shown,
 Qty. 4

Attach components using wood glue and pocket holes with 1 ¹/₄" coarse thread pocket hole screws. Back panel and bat shelf can be attached to side panels using wood glue nails as an alternative.

WWW.TWINTOWNDIY.COM



PROJECT

Garage Storage

TITLE

Sporting Goods Storage Cabinet

APPROVED		SIZE	CODE	DWG NO	REV
CHECKED		A			A
DRAWN	Twintown DIY	7/17/2018	SCALE	WEIGHT	SHEET 1/6

PARTS LIST

ITEM	QTY	PART NUMBER	DESCRIPTION	MATERIAL
1	1	BOTTOM SHELF	22.5" X 16", 3/4" PLYWOOD	PLYWOOD
2	1	RIGHT SIDE	16" X 40", 3/4" PLYWOOD	PLYWOOD
3	1	LEFT SIDE	16" X 40", 3/4" PLYWOOD	PLYWOOD
4	1	MID-SHELF	22.5" X 16", 3/4" PLYWOOD	PLYWOOD
5	1	BACK TOP RAIL	2" X 2" X 22.5" (OR RIPPED 2X4)	PINE
6	1	FRONT TOP RAIL	2" X 2" X 22.5" (OR RIPPED 2X4)	PINE
7	1	BACK PANEL	24" X 40", 1/2" PLYWOOD	PLYWOOD
8	1	BAT SHELF	3" X 16", 3/4" PLYWOOD	PLYWOOD
9	1	FRONT BAT SUPPORT	3" X 3", 1/2" PLYWOOD	PLYWOOD
10	1	BACK BAT SUPPORT	3" X 3", 1/2" PLYWOOD	PLYWOOD



PROJECT

Garage Storage

TITLE

Sporting Goods Storage Cabinet

WWW.TWINTOWNDIY.COM

APPROVED

CHECKED

DRAWN Twintown DIY 7/17/2018

SIZE

A

CODE

DWG NO

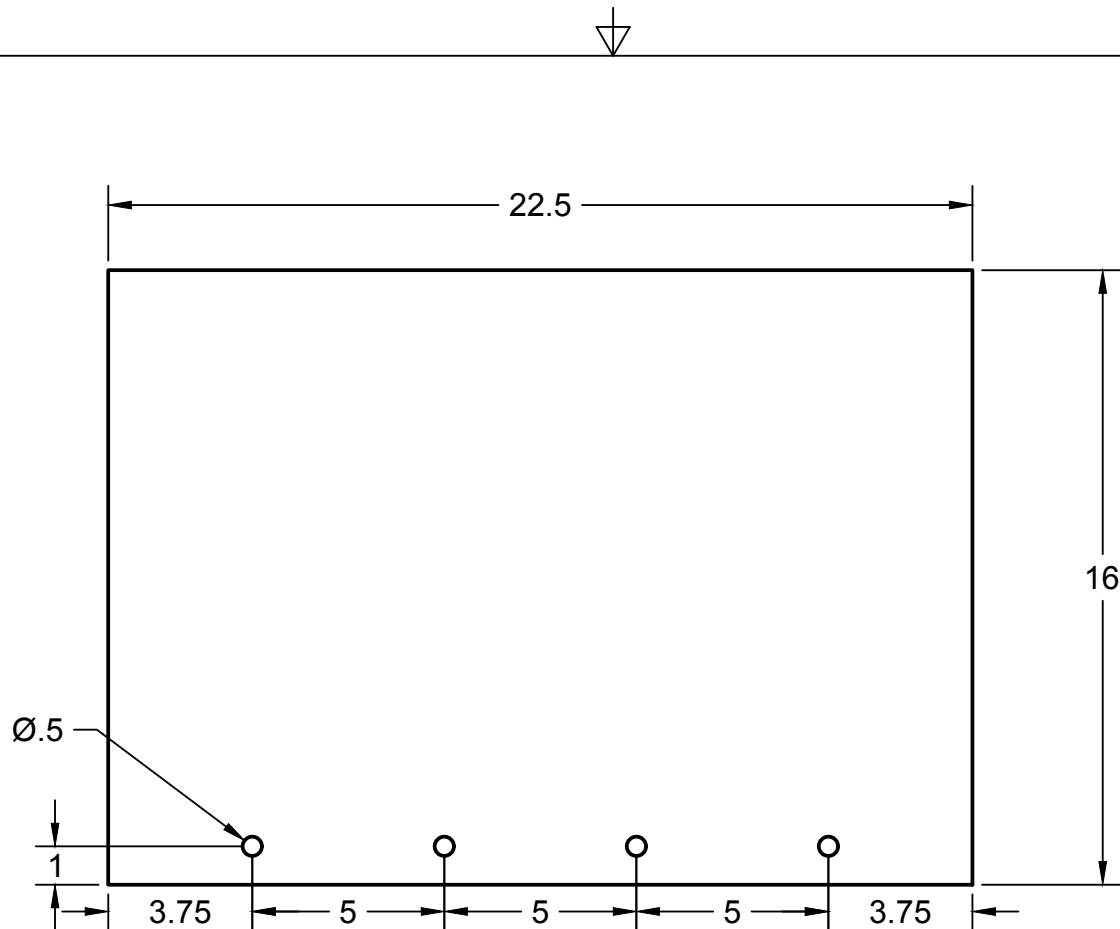
REV

A

SCALE

WEIGHT

SHEET 2/6



Mid-Shelf



PROJECT

Garage Storage

TITLE

Sporting Goods Storage Cabinet

APPROVED

CHECKED

DRAWN Twintown DIY 7/17/2018

SIZE

A

CODE

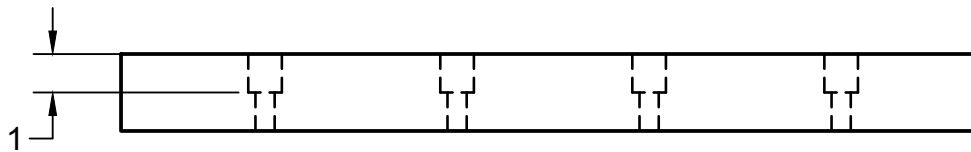
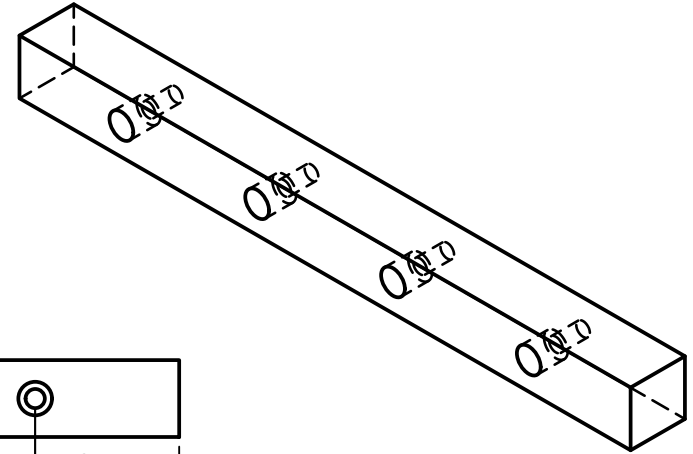
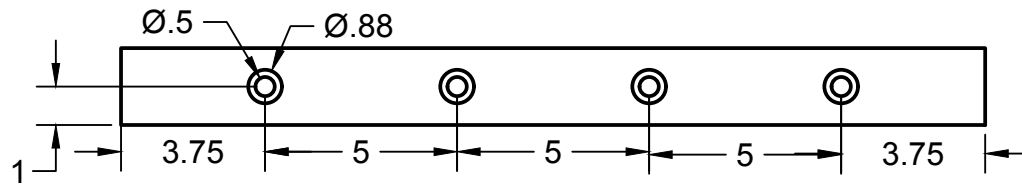
DWG NO

REV

SCALE 1:10

WEIGHT


SHEET 3/6

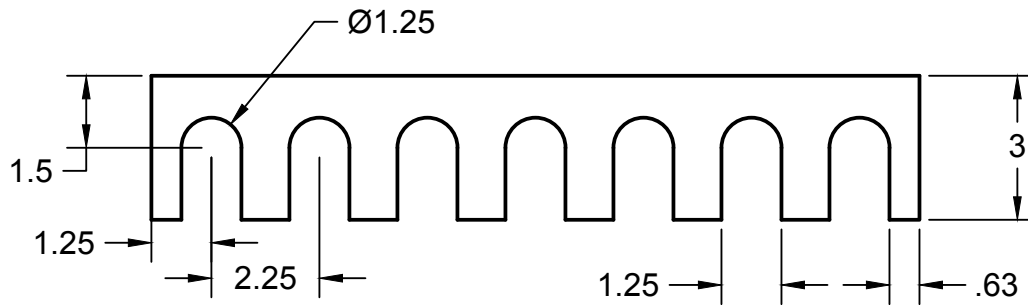


Front Top Rail

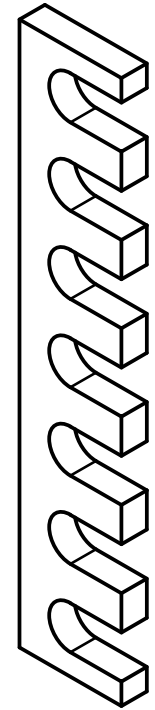


WWW.TWINTOWNDIY.COM


		PROJECT			
		Garage Storage			
APPROVED CHECKED		TITLE			
		Sporting Goods Storage Cabinet			
DRAWN	Twintown DIY	7/17/2018	SCALE 1:5	WEIGHT	REV
			SHEET 4/6		

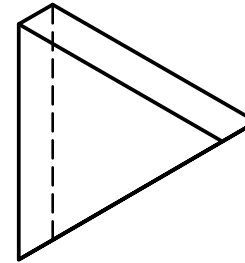
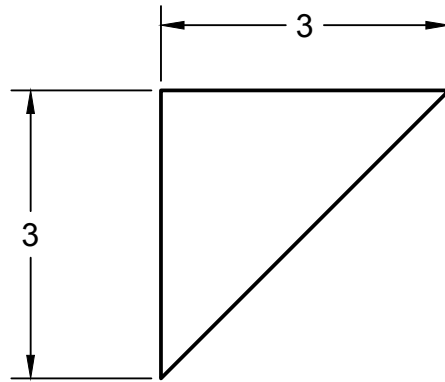


Bat Shelf



WWW.TWINTOWNDIY.COM

		PROJECT			
		Garage Storage			
APPROVED CHECKED		TITLE			
		Sporting Goods Storage Cabinet			
DRAWN	Twintown DIY	7/17/2018	SCALE 1:5	WEIGHT	REV
			SHEET 5/6		



Front and Back Bat Supports
Qty. 2



PROJECT

Garage Storage

TITLE

Sporting Goods Storage Cabinet

APPROVED

CHECKED

DRAWN Twintown DIY 7/17/2018

SIZE

A

CODE

DWG NO

REV

SCALE 1:2

WEIGHT

SHEET 6/6