

Rear Axle Drive HAA350+

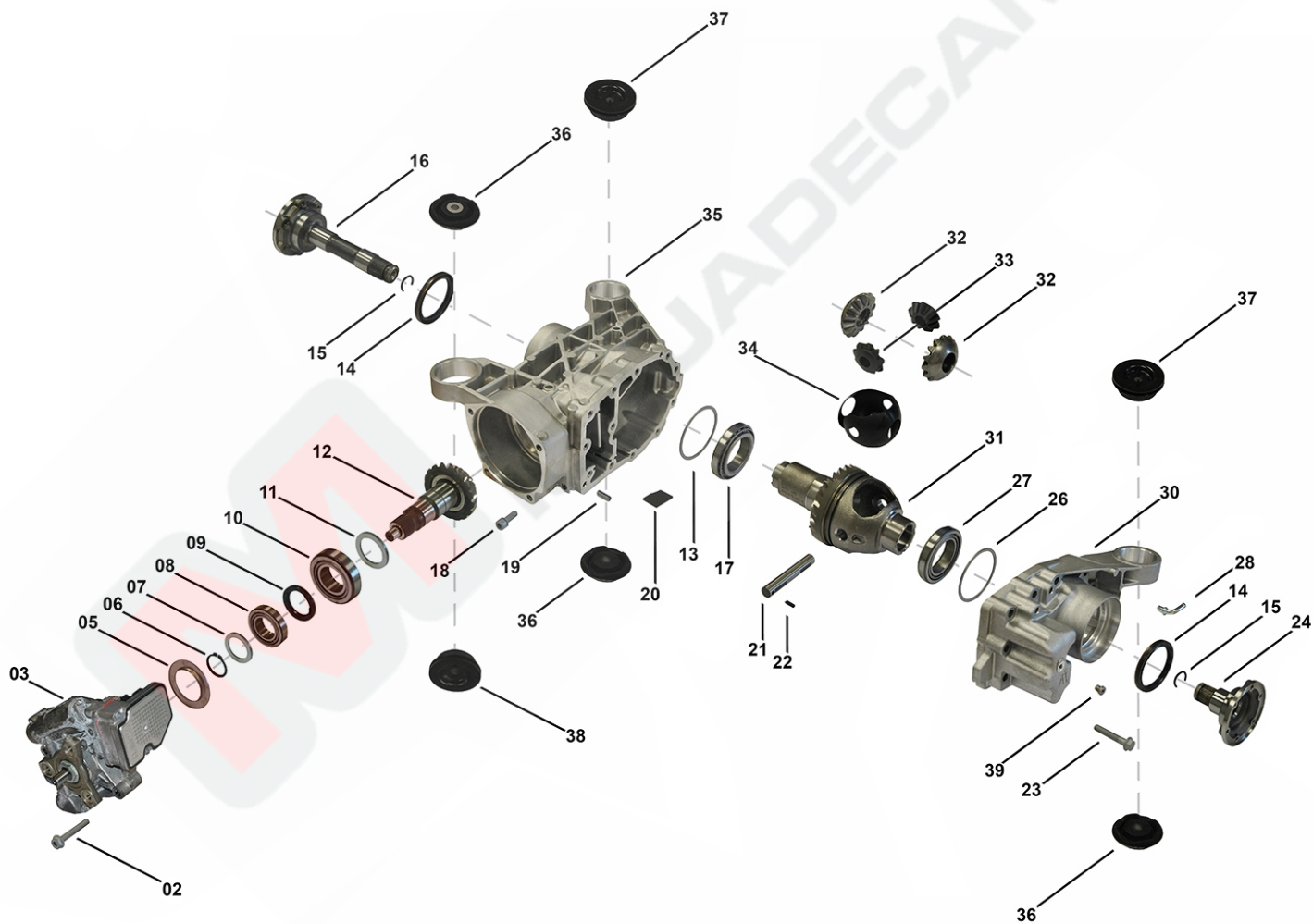
RD00022, RD00023, RD00056, RD00059, RD00060

OEM No: 0AV525010K; 0AV525010L; 0AV525010M; 0BR525010G; 0BR525010H

Brands

Brand	Modelseries
Audi	A3; S3; TT

List of parts



Pos	Part number	OEM no	Quantity	Product name	Info
'I01	RD00022	0AV525010K		OE References	0AV525010, 0AV525010B, 0AV525010D, 0AV525010H, 0AV525010K
'I02	RD00023	0AV525010L		OE References	0AV525010A, 0AV525010C, 0AV525010E, 0AV525010L
'I03	RD00056	0AV525010M		OE References	0AV525010F, 0AV525010M
'I04	RD00059	0BR525010G		OE References	0BR525010, 0BR525010B, 0BR525010G

Rear Axle Drive HAA350+

RD00022, RD00023, RD00056, RD00059, RD00060

OEM No: 0AV525010K; 0AV525010L; 0AV525010M; 0BR525010G; 0BR525010H

List of parts

Pos	Part number	OEM no	Quantity	Product name	Info
'I05	RD00060	0BR525010H		OE References	0BR525010A, 0BR525010C, 0BR525010H
'K01	SP01986		1 piece	Bearing Kit	Contains position 08, 10, 17, 27
'K02	SP00541		1 piece	Sealing Kit	Contains position 09, 14, 39 Information for HAA350+ Audi: Used in 0AV525010, 0AV525010A, 0AV525010B, 0AV525010C Information for HAA350+ SEAT: Used in 0AV525010, 0AV525010A, 0AV525010B, 0AV525010C Information for HAA350+ Skoda: Used in 0AV525010, 0AV525010B Information for HAA350+ VW: Used in 0AV525010, 0AV525010A, 0AV525010B, 0AV525010C
'K02	SP01985		1 piece	Sealing Kit	Contains position 09, 14, 39 Information for HAA350+ Audi: Used in 0AV525010D, 0AV525010E, 0AV525010F, 0AV525010H, 0AV525010K, 0AV525010L, 0AV525010M, 0BR525010, 0BR525010A, 0BR525010B, 0BR525010C, 0BR525010G, 0BR525010H Information for HAA350+ SEAT: Used in 0AV525010D, 0AV525010E, 0AV525010H, 0AV525010K, 0AV525010L, 0BR525010, 0BR525010B, 0BR525010G Information for HAA350+ Skoda: Used in 0AV525010D, 0AV525010H, 0AV525010K, 0BR525010, 0BR525010B, 0BR525010E, 0BR525010G, 0BR525010J Information for HAA350+ VW: Used in 0AV525010D, 0AV525010E, 0AV525010H, 0AV525010K, 0AV525010L, 0BR525010, 0BR525010B, 0BR525010G
02	SP01993		4 pieces	Screw	Information for HAA350+ Skoda: Used in 0AV525010K, 0BR525010G Information for HAA450 VW: Used in 01Z525010D, 01Z525010J, 01Z525010K, 0AY525010L, 0BS525010G
03	Not available		1 piece	Center Differential ASM	

Rear Axle Drive HAA350+

RD00022, RD00023, RD00056, RD00059, RD00060

OEM No: 0AV525010K; 0AV525010L; 0AV525010M; 0BR525010G; 0BR525010H

List of parts

Pos	Part number	OEM no	Quantity	Product name	Info
05	SP01319		1 piece	Oil Guide Plate	<p>Information for HAA350+ Audi: Used in 0BR525010G, 0BR525010H</p> <p>Information for HAA350+ SEAT: Used in 0BR525010G</p> <p>Information for HAA350+ Skoda: Used in 0BR525010E, 0BR525010G</p> <p>Information for HAA350+ VW: Used in 0BR525010G</p> <p>Information for HAA450 VW: Used in 0AY525010L, 0AY525010N, 0BS525010G</p>
06	SP01994		1 piece	Retaining Ring	
07	Not available		1 piece	Shim	
08	Only available in K01		1 piece	Tapered Roller Bearing	
09	SP01314	02D525275M	1 piece	Radial Sealing	
10	Only available in K01		1 piece	Tapered Roller Bearing	
11	Not available		1 piece	Shim	
12	Not available		1 piece	Pinion Gear	<p>Information for HAA350+ Audi: Used in 0AV525010, 0AV525010A, 0AV525010B, 0AV525010C</p> <p>Information for HAA350+ SEAT: Used in 0AV525010, 0AV525010A, 0AV525010B, 0AV525010C</p> <p>Information for HAA350+ Skoda: Used in 0AV525010, 0AV525010B</p> <p>Information for HAA350+ VW: Used in 0AV525010, 0AV525010A, 0AV525010B, 0AV525010C</p>
12	SP01318		1 piece	Pinion Gear	<p>Information for HAA350+ Audi: Used in 0AV525010D, 0AV525010E, 0AV525010F, 0AV525010H, 0AV525010K, 0AV525010L, 0AV525010M, 0BR525010, 0BR525010A, 0BR525010B, 0BR525010C, 0BR525010G, 0BR525010H</p> <p>Information for HAA350+ SEAT: Used in 0AV525010D, 0AV525010E, 0AV525010H, 0AV525010K, 0AV525010L, 0BR525010, 0BR525010B, 0BR525010G</p> <p>Information for HAA350+ Skoda: Used in 0AV525010D, 0AV525010H, 0AV525010K, 0BR525010, 0BR525010B, 0BR525010E, 0BR525010G, 0BR525010J</p> <p>Information for HAA350+ VW: Used in 0AV525010D, 0AV525010E, 0AV525010H, 0AV525010K, 0AV525010L, 0BR525010, 0BR525010B, 0BR525010G</p>
13	Not available		1 piece	Shim	
14	SP01684	02D525596F	2 pieces	Radial Seal Ring	
15	SP01341	A0049949840	2 pieces	Snap Ring	
16	SP01335	02D525356	1 piece	Shaft Flange Right	
17	Only available in K01		1 piece	Tapered Roller Bearing	

Rear Axle Drive HAA350+

RD00022, RD00023, RD00056, RD00059, RD00060

OEM No: 0AV525010K; 0AV525010L; 0AV525010M; 0BR525010G; 0BR525010H

List of parts

Pos	Part number	OEM no	Quantity	Product name	Info
18	SP01995		1 piece	Screw	
19	SP01996		2 pieces	Pin	
20	SP01916		1 piece	Magnet	<p>Information for HAA350+ Audi: Used in 0AV525010, 0AV525010A, 0AV525010B, 0AV525010C</p> <p>Information for HAA350+ SEAT: Used in 0AV525010, 0AV525010A, 0AV525010B, 0AV525010C</p> <p>Information for HAA350+ Skoda: Used in 0AV525010, 0AV525010B</p> <p>Information for HAA350+ VW: Used in 0AV525010, 0AV525010A, 0AV525010B, 0AV525010C</p>
20	SP01998	01Z525615	2 pieces	Magnet	<p>Information for HAA350+ Audi: Used in 0AV525010D, 0AV525010E, 0AV525010F, 0AV525010H, 0AV525010K, 0AV525010L, 0AV525010M, 0BR525010, 0BR525010A, 0BR525010B, 0BR525010C, 0BR525010G, 0BR525010H</p> <p>Information for HAA350+ SEAT: Used in 0AV525010D, 0AV525010E, 0AV525010H, 0AV525010K, 0AV525010L, 0BR525010, 0BR525010B, 0BR525010G</p> <p>Information for HAA350+ Skoda: Used in 0AV525010D, 0AV525010H, 0AV525010K, 0BR525010, 0BR525010B, 0BR525010E, 0BR525010G, 0BR525010J</p> <p>Information for HAA350+ VW: Used in 0AV525010D, 0AV525010E, 0AV525010H, 0AV525010K, 0AV525010L, 0BR525010, 0BR525010B, 0BR525010G</p> <p>Information for PL72 ATC: Used in 95834101001 - 95834101005, 95834101011 - 95834101015, 95834101020 - 95834101024, 95834101030</p> <p>Information for PL72 T Audi: Used in 0BU341010N, 0BU341010P, 0BU341010Q</p> <p>Information for PL72 T Porsche: Used in 95834102001, 95834102002, 95834102011, 0BU341010L, 95834102020</p> <p>Information for PL72 T VW: Used in 0BU341010B, 0BU341010C, 0BU341010D, 0BU341010E, 0BU341010F, 0BU341010L, 0BU341010M, 0BU341010P, 0BU341010R, 0BU341010S, 0BU341010T, 0BU341011, 0BU341011A, 0BU341011C, 0BU341011D, 0BU341011G, 0BU341011H, 0BU341011J, 0BU341011P</p>
21	SP01362		1 piece	Poppet	
22	SP01997		1 piece	Pin	
23	SP00635		12 pieces	Flange Screw	
24	SP01332	02D525355B	1 piece	Shaft Flange Left	

Rear Axle Drive HAA350+

RD00022, RD00023, RD00056, RD00059, RD00060

OEM No: 0AV525010K; 0AV525010L; 0AV525010M; 0BR525010G; 0BR525010H

List of parts

Pos	Part number	OEM no	Quantity	Product name	Info
26	Not available		1 piece	Shim	
27	Only available in K01		1 piece	Tapered Roller Bearing	
28	SP01359	02D525118C	2 pieces	Angled Pipe	
30	Not available		1 piece	Cover Left	
31	Not available		1 piece	Differential Housing ASM	
32	SP01320		2 pieces	Gear Differential Side	
33	SP01321		2 pieces	Gear Differential Spider	
34	Not available		1 piece	Thrust Washer Compound	
35	Not available		1 piece	Cover Right	
36	SP01339	1K0599438A	3 pieces	Mounting	Information for HAA350+ Audi: Used in 0AV525010K, 0AV525010L, 0BR525010G Information for HAA450 Audi: Used in 0BY525010B
36	SP01342		3 pieces	Mounting	Information for HAA350+ Audi: Used in 0AV525010M, 0BR525010H
37	SP01338	1K0599437A	2 pieces	Mounting	Information for HAA350+ Audi: Used in 0AV525010K, 0AV525010L, 0BR525010G Information for HAA450 Audi: Used in 0BY525010B
37	SP01340		2 pieces	Mounting	Information for HAA350+ Audi: Used in 0AV525010M, 0BR525010H
38	SP01312	1K0599431A	1 piece	Mounting	Information for HAA350+ Audi: Used in 0AV525010K, 0AV525010L, 0BR525010G
38	SP01337		1 piece	Mounting	Information for HAA350+ Audi: Used in 0AV525010M, 0BR525010H
39	Only available in K02		3 pieces	Plug	Information for HAA350+ Audi: Used in 0AV525010, 0AV525010A, 0AV525010B, 0AV525010C Information for HAA350+ SEAT: Used in 0AV525010, 0AV525010A, 0AV525010B, 0AV525010C Information for HAA350+ Skoda: Used in 0AV525010, 0AV525010B Information for HAA350+ VW: Used in 0AV525010, 0AV525010A, 0AV525010B, 0AV525010C

Rear Axle Drive HAA350+

RD00022, RD00023, RD00056, RD00059, RD00060

OEM No: 0AV525010K; 0AV525010L; 0AV525010M; 0BR525010G; 0BR525010H

List of parts

Pos	Part number	OEM no	Quantity	Product name	Info
39	Only available in K02		3 pieces	Plug	<p>Information for HAA350+ Audi: Used in 0AV525010D, 0AV525010E, 0AV525010F, 0AV525010H, 0AV525010K, 0AV525010L, 0AV525010M, 0BR525010, 0BR525010A, 0BR525010B, 0BR525010C, 0BR525010G, 0BR525010H</p> <p>Information for HAA350+ SEAT: Used in 0AV525010D, 0AV525010E, 0AV525010H, 0AV525010K, 0AV525010L, 0BR525010, 0BR525010B, 0BR525010G</p> <p>Information for HAA350+ Skoda: Used in 0AV525010D, 0AV525010H, 0AV525010K, 0BR525010, 0BR525010B, 0BR525010E, 0BR525010G, 0BR525010J</p> <p>Information for HAA350+ VW: Used in 0AV525010D, 0AV525010E, 0AV525010H, 0AV525010K, 0AV525010L, 0BR525010, 0BR525010B, 0BR525010G</p>
	SP02000		1 piece	Sealant	Sealant SILICON BLACK (1pce = 300ml)