

Transfer Case ITC PLA

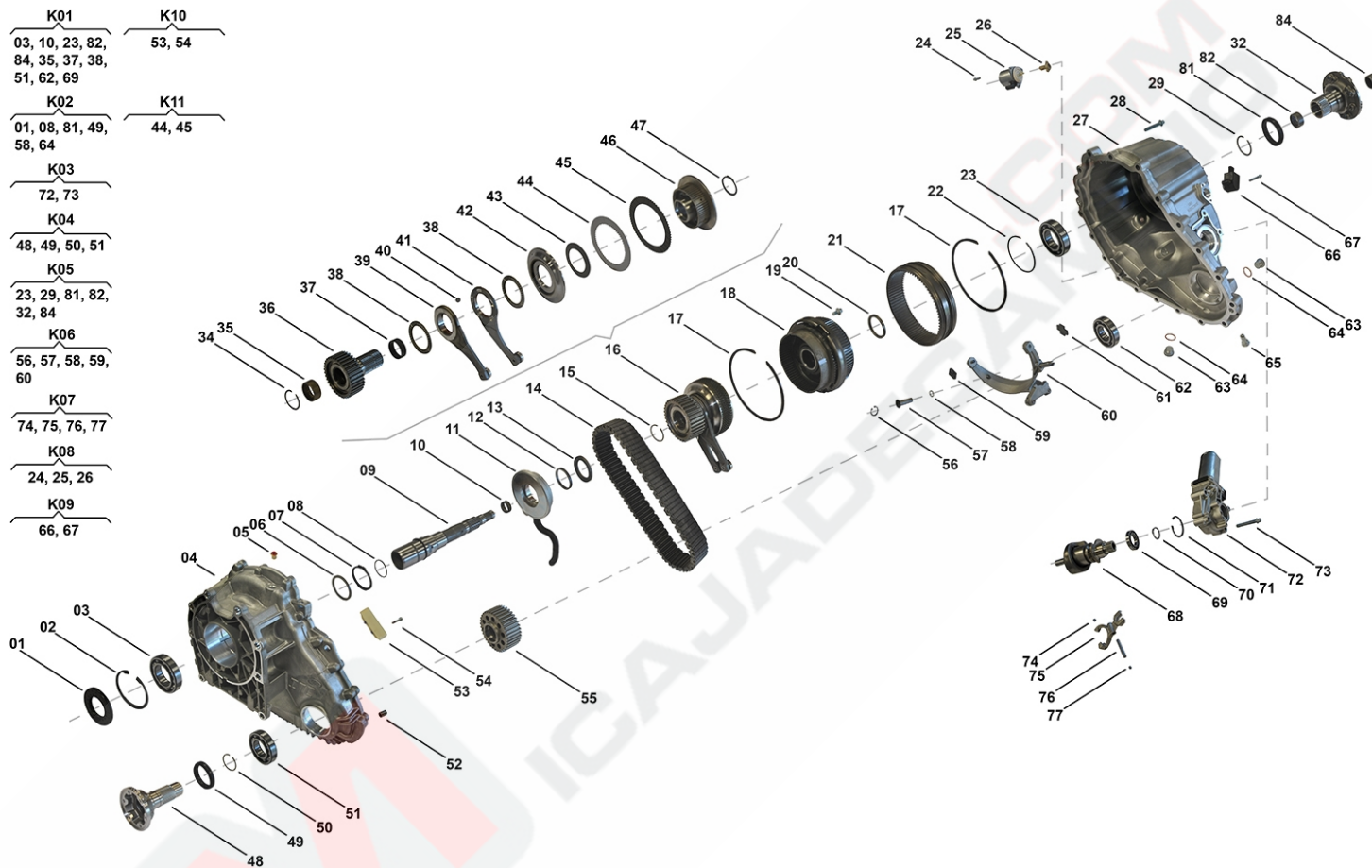
TC00404

OEM No: LR006016; LR008206; LR049160

Brands

Brand	Modelseries
Land Rover	Discovery; Range Rover; Range Rover Sport

List of parts



Pos	Part number	OEM no	Quantity	Product name	Info
'K01	SP00972		1 piece	Bearing Kit	Contains position 03, 10, 23, 35, 37, 38, 51, 62, 69, 82, 84
'K02	SP00957		1 piece	Sealing Kit	Contains position 01, 08, 49, 58, 64, 81
'K03	SP00072	IGH500040	1 piece	Actuator Kit	Contains position 72, 73
'K04	SP00320	IEA500031	1 piece	Flange Kit Front	Contains position 48, 49, 50, 51
'K05	SP00965	LR039528	1 piece	Flange Kit Rear	Contains position 23, 29, 32, 81, 82, 84
'K06	SP00288		1 piece	Shift Fork Kit	Contains position 56, 57, 58, 59, 60
'K07	SP00273		1 piece	Shift Fork Kit	Contains position 74, 75, 76, 77
'K08	SP00075	A1642800058; IGF500011	1 piece	Solenoid Kit	Contains position 24, 25, 26
'K09	SP00857	A1645500055; IAB500191	1 piece	Sensor Kit	Contains position 66, 67
'K10	SP00194		1 piece	Sliding Block Kit	Contains position 53, 54
'K11	SP01449		1 piece	Clutch Kit	Contains position 44, 45
01	SP01693	IZB500030	1 piece	Radial Seal Ring	
02	SP00317		1 piece	Locking Ring	
03	SP00969		1 piece	Groove Ball Bearing	

Transfer Case ITC PLA

TC00404

OEM No: LR006016; LR008206; LR049160

List of parts

Pos	Part number	OEM no	Quantity	Product name	Info
04	Not available		1 piece	Housing Front	
05	SP00316		1 piece	Air Flue Acceptance	
06	Not available		1 piece	Shim	
07	SP00312		1 piece	Locking Ring	
08	SP00167	IYX500050	1 piece	O-Ring	Including Tube of Assembly Paste
09	Not available - sold out		1 piece	Drive Shaft ASM	Information for ITC PLA: Used in IAB500240, IAB500241, IAB500243, IAB500244, IAB500280, LR006016, LR008206
09	SP00966		1 piece	Drive Shaft ASM	Information for ITC PLA: Used in LR023011, LR035617, LR045477, LR049160
10	SP00200		1 piece	Needle Bearing	
11	SP00641		1 piece	Pump ASM	
12	SP00309		1 piece	Distance Washer Oil Pump	Information for ITC PLA: Used in IAB500240, IAB500241, IAB500243, IAB500244, IAB500280, LR006016, LR008206
12	SP00963		1 piece	Distance Washer Oil Pump	Information for ITC PLA: Used in LR023011, LR035617, LR045477, LR049160
13	SP00308		1 piece	Sealing Washer	
14	SP00655	HV098	1 piece	Chain	Information for DCD: Used in A1662800800 Information for ITC PLA: Used in IAB500240, IAB500241, IAB500243, IAB500244, IAB500280, LR006016, LR008206
14	SP00958	LR044897	1 piece	Chain	Information for ITC PLA: Used in LR023011, LR035617, LR045477, LR049160
15	SP00307		1 piece	Snap Ring	
16	SP00844		1 piece	Sprocket Assy	Information for ITC PLA: Used in IAB500240, IAB500241, IAB500243, IAB500244, IAB500280, LR006016, LR008206
16	SP00961		1 piece	Sprocket Assy	Information for ITC PLA: Used in LR023011, LR035617, LR045477, LR049160
17	Not available		2 pieces	Circlip	
18	SP00229		1 piece	Differential ASM	
19	Not available		6 pieces	Socket Screw	
20	SP00251		1 piece	Spacer Ring	
21	SP00252		1 piece	Sliding Collar	
22	SP00256		1 piece	Circlip	Information for ITC PLA: Used in IAB500240, IAB500241, IAB500243, IAB500244, IAB500280, LR006016, LR008206
23	SP00257		1 piece	Groove Ball Bearing	
24	Only available in K08		3 pieces	Screw	
25	Only available in K08		1 piece	Solenoid	
26	Only available in K08		1 piece	Control Element	
27	Not available		1 piece	Housing Rear	
28	SP00314		19 pieces	Tapping Screw	
29	SP00261	A0019941540	1 piece	Circlip	
32	Only available in K05		1 piece	Flange	
34	SP00007		1 piece	Retaining Ring	Information for ITC PLA: Used in LR023011, LR035617, LR045477, LR049160
35	SP00306		1 piece	Needle Sleeve	
36	SP00305		1 piece	Sprocket Shaft	Information for ITC PLA: Used in IAB500240, IAB500241, IAB500243, IAB500244, IAB500280, LR006016, LR008206
36	SP00962		1 piece	Sprocket Shaft	Information for ITC PLA: Used in LR023011, LR035617, LR045477, LR049160

Transfer Case ITC PLA

TC00404

OEM No: LR006016; LR008206; LR049160

List of parts

Pos	Part number	OEM no	Quantity	Product name	Info
37	SP00133		1 piece	Needle Ring	
38	SP00134		2 pieces	Needle Ring Axial	
39	SP00303		1 piece	Actuator Ring	
40	SP00302		5 pieces	Ball	
41	SP00301		1 piece	Actuator Ring	
42	SP00300		1 piece	Piston	
43	SP00299		5 pieces	Disk Spring	
44	Only available in K11		10 pieces	Steel Plate	
45	Only available in K11		10 pieces	Torque Transfer Shim	
46	SP00296		1 piece	Boss	
47	SP00295		1 piece	Locking Ring	
48	Only available in K04		1 piece	Flange Front	
49	SP00168	332161LA0A; A0159975845; IZB500040	1 piece	Ring Sealing	
50	SP00319	A0019941440	1 piece	Snap Ring	
51	SP00318		1 piece	Groove Ball Bearing	
52	SP00155		2 pieces	Pin	
53	Only available in K10		2 pieces	Sliding Block	
54	Only available in K10		4 pieces	Screw	
55	SP00304		1 piece	Sprocket	Information for ITC PLA: Used in IAB500240, IAB500241, IAB500243, IAB500244, IAB500280, LR006016, LR008206
55	SP00960		1 piece	Sprocket	Information for ITC PLA: Used in LR023011, LR035617, LR045477, LR049160
56	Only available in K06		1 piece	Locking Ring	
57	Only available in K06		1 piece	Bolt Specific	
58	Only available in K02 & K06		1 piece	O-Ring	
59	SP00289		2 pieces	Sliding Block	
60	Only available in K06		1 piece	Shift Fork	
61	SP00287		1 piece	Magnet	Information for ITC PLA: Used in IAB500244, IAB500280, LR008206, LR023011, LR035617, LR045477, LR049160
61	SP00657		1 piece	Magnet	Information for ITC PLA: Used in IAB500240, IAB500241, IAB500243, LR006016
62	SP00970		1 piece	Groove Ball Bearing	
63	SP00171	A0029900612; IYB500020	2 pieces	Plug	Information for ITC PLA: Used in IAB500240, IAB500241, IAB500243, IAB500244, IAB500280, LR006016, LR008206
63	SP01560	88896061; LR048841	2 pieces	Plug	Information for ITC PLA: Used in LR023011, LR035617, LR045477, LR049160
64	SP00163	07119963308; 88896062; LR048842	2 pieces	Washer-Sealing	Information for ITC PLA: Used in LR023011, LR035617, LR045477, LR049160
64	SP00170	8201057777; IYF500030; TYF101070	2 pieces	Washer Sealing	Information for ITC PLA: Used in IAB500240, IAB500241, IAB500243, IAB500244, IAB500280, LR006016, LR008206
65	SP00286		1 piece	Adjustment	
66	Only available in K09		1 piece	Sensor	
67	Only available in K09		2 pieces	Tapping Screw	
68	SP00277		1 piece	Actuator Shaft ASM	
69	SP00267		1 piece	Groove Ball Bearing	
70	SP00269		1 piece	Locking Ring	
71	SP00268		1 piece	Retaining Ring	

Transfer Case ITC PLA

TC00404

OEM No: LR006016; LR008206; LR049160

List of parts

Pos	Part number	OEM no	Quantity	Product name	Info
72	Only available in K03		1 piece	Actuator	
73	Only available in K03		4 pieces	Tapping Screw	
74	Only available in K07		2 pieces	Caster	
75	Only available in K07		1 piece	Shift Fork	
76	Only available in K07		1 piece	Pin Magnet Shift Fork	
77	Only available in K07		1 piece	Closing Cover	
81	SP00169	A0159975945; IZB500050	1 piece	Ring Sealing	
82	Only available in K01 & K05		1 piece	Needle Sleeve	
84	SP00265		1 piece	Needle Sleeve	
	OIL0002	IYK500010	1.5 liter	Transmission Fluid	Shipment in 1 liter bottles
	SP02000		1 piece	Sealant	Sealant SILICON BLACK (1pce = 300ml)