

# Rear Axle Drive M300+

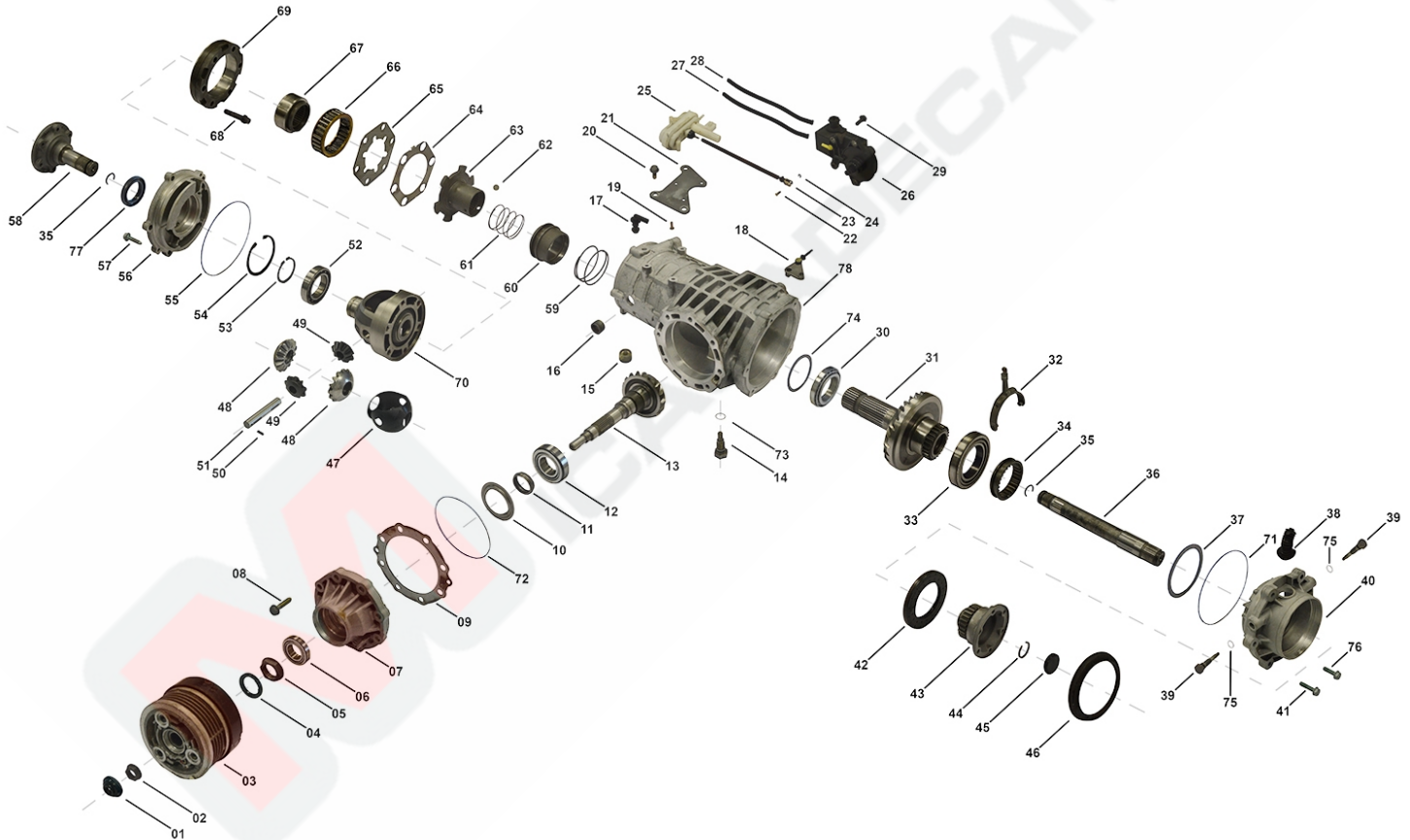
RD00038, RD00047, RD00051, RD00055

OEM No: 02D525011H; 02D525012E; 02D525015E; 02D525016E

## Brands

Brand	Modelseries
VW	Transporter

## List of parts



Pos	Part number	OEM no	Quantity	Product name	Info
'I01	RD00038	02D525011H		OE References	02D525011H
'I02	RD00047	02D525012E		OE References	02D525012E
'I03	RD00051	02D525015E		OE References	02D525015E
'I04	RD00055	02D525016E		OE References	02D525016E
'K01	SP00821		1 piece	Bearing Kit	Contains position 06, 12, 30, 33, 52
'K02	SP00855		1 piece	Sealing Kit	Contains position 01, 04, 55, 71, 72, 73, 77  Information for M300+: Used in 02D525011H, 02D525012E  Information for MQ: Used in 02D525011A, 02D525011C, 02D525012, 02D525012A, 02D525012C

## Rear Axle Drive M300+

RD00038, RD00047, RD00051, RD00055

OEM No: 02D525011H; 02D525012E; 02D525015E; 02D525016E

### List of parts

Pos	Part number	OEM no	Quantity	Product name	Info
'K02	SP00856		1 piece	Sealing Kit	Contains position 01, 04, 42, 55, 71, 72, 73, 75, 77  Information for M300+: Used in 02D525015E, 02D525016E  Information for MQ: Used in 02D525015A, 02D525015C, 02D525016, 02D525016A, 02D525016C
'K30	SP01273		1 piece	Bearing + Sealing Kit	Contains position 01, 04, 06, 12, 30, 33, 52, 55, 71, 72, 73, 77  Information for M300+: Used in 02D525011H, 02D525012E  Information for MQ: Used in 02D525011A, 02D525011C, 02D525012, 02D525012A, 02D525012C
'K30	SP01274		1 piece	Bearing + Sealing Kit	Contains position 01, 04, 06, 12, 30, 33, 42, 52, 55, 71, 72, 73, 75, 77  Information for M300+: Used in 02D525015E, 02D525016E  Information for MQ: Used in 02D525015A, 02D525015C, 02D525016, 02D525016A, 02D525016C
01	SP00850	02D525583	1 piece	Radial Seal Ring	
02	SP00492		1 piece	Flange Nut	
03	SP00100	02D525553C	1 piece	VC Remanufactured	
04	Only available in K02		1 piece	Sealing Ring	
05	SP01866		1 piece	Nut	
06	SP00818	003519185B	1 piece	Tapered Roller Bearing	
07	Not available		1 piece	Pinion Housing	
08	SP01867		7 pieces	Screw	
09	Not available		1 piece	Shim	
10	SP01899		1 piece	Baffle Plate	
11	SP01869		1 piece	Distance Bush	
12	SP00819	091517185C	1 piece	Tapered Roller Bearing	
13	SP01900		1 piece	Pinion	
14	SP01887		1 piece	Bearing Screw	Information for M300+: Used in 02D525011H, 02D525015E
15	SP01360		1 piece	Magnet	
16	SP00019		1 piece	Plug	
17	Not available		1 piece	Vent	
18	SP01890		1 piece	Switch Lever ASM	Information for M300+: Used in 02D525011H, 02D525015E
19	SP01872		3 pieces	Screw	Information for M300+: Used in 02D525015E, 02D525016E
20	SP01873		3 pieces	Screw	Information for M300+: Used in 02D525015E, 02D525016E
21	SP01897		1 piece	Carrier Plate	Information for M300+: Used in 02D525015E, 02D525016E
22	SP01889		1 piece	Bolt	Information for M300+: Used in 02D525015E, 02D525016E
23	SP01888		1 piece	Shifting Rod ASM	Information for M300+: Used in 02D525015E, 02D525016E
24	SP01886		1 piece	Retaining Washer	Information for M300+: Used in 02D525015E, 02D525016E

## Rear Axle Drive M300+

RD00038, RD00047, RD00051, RD00055

OEM No: 02D525011H; 02D525012E; 02D525015E; 02D525016E

### List of parts

Pos	Part number	OEM no	Quantity	Product name	Info
25	Not available		1 piece	Vacuum Unit	Information for M300+: Used in 02D525015E, 02D525016E
26	Not available		1 piece	Vacuum Element ASM	Information for M300+: Used in 02D525011H, 02D525015E
27	Not available		1 piece	Tube	Information for M300+: Used in 02D525011H, 02D525015E
28	Not available		1 piece	Tube	Information for M300+: Used in 02D525011H, 02D525015E
29	SP01871		4 pieces	Screw	Information for M300+: Used in 02D525011H, 02D525015E
30	Only available in K01		1 piece	Tapered Roller Bearing	
31	SP01863		1 piece	Shaft ASM	Information for M300+: Used in 02D525015E, 02D525016E
31	SP01913		1 piece	Shaft ASM	Information for M300+: Used in 02D525011H, 02D525012E
32	SP01901		1 piece	Shift Fork	Information for M300+: Used in 02D525015E, 02D525016E
33	SP00817	02D409123A	1 piece	Tapered Roller Bearing	
34	SP01895		1 piece	Shifting Collar	Information for M300+: Used in 02D525015E, 02D525016E
35	SP01341	A0049949840	2 pieces	Snap Ring	
36	SP01894		1 piece	Shaft	
37	Not available		1 piece	Shim	
38	Not available		1 piece	Bellows	Information for M300+: Used in 02D525015E, 02D525016E
39	SP01874		2 pieces	Bearing Screw	Information for M300+: Used in 02D525015E, 02D525016E
40	Not available		1 piece	Cover Left	
41	SP00016		6 pieces	Screw	
42	SP00852	02D525275L	1 piece	Radial Seal Ring	Information for M300+: Used in 02D525015E, 02D525016E
43	SP00011		1 piece	Flange	Information for M300+: Used in 02D525011H, 02D525012E
43	SP00355		1 piece	Flange	Information for M300+: Used in 02D525015E, 02D525016E
44	SP01880		1 piece	Retaining Ring	
45	SP01915		1 piece	Seal Cap	
46	SP01881		1 piece	Slinger	Information for M300+: Used in 02D525015E, 02D525016E
46	SP01921		1 piece	Slinger	Information for M300+: Used in 02D525011H, 02D525012E
47	Not available		1 piece	Thrust Washer Compound	
48	SP01320		2 pieces	Gear Differential Side	
49	SP01321		2 pieces	Gear Differential Spider	
50	SP01348		1 piece	Spring Pin	
51	SP01362		1 piece	Poppet	
52	SP00820	02D525193	1 piece	Ball Bearing	
53	SP00295		1 piece	Retaining Ring	
54	SP00203		1 piece	Retaining Ring	
55	Only available in K02		1 piece	O-Ring	
56	Not available		1 piece	Cover Right	
57	SP01865		5 pieces	Screw	
58	SP00021		1 piece	Shaft Flange	
59	SP01877		1 piece	Pressure Spring	Information for M300+: Used in 02D525011H, 02D525015E

## Rear Axle Drive M300+

RD00038, RD00047, RD00051, RD00055

OEM No: 02D525011H; 02D525012E; 02D525015E; 02D525016E

### List of parts

Pos	Part number	OEM no	Quantity	Product name	Info
60	SP01876		1 piece	Shifting Collar	Information for M300+: Used in 02D525011H, 02D525015E
61	SP01879		1 piece	Pressure Spring	Information for M300+: Used in 02D525011H, 02D525015E
62	SP01875		6 pieces	Ball	Information for M300+: Used in 02D525011H, 02D525015E
63	SP01878		1 piece	Sliding Collar	Information for M300+: Used in 02D525011H, 02D525015E
64	SP01904		1 piece	Locking Plate	Information for M300+: Used in 02D525011H, 02D525015E
65	SP01903		1 piece	Thrust Washer	Information for M300+: Used in 02D525011H, 02D525015E
66	SP01907		1 piece	Clamping Body	Information for M300+: Used in 02D525011H, 02D525015E
67	SP01902		1 piece	Inner Ring	Information for M300+: Used in 02D525011H, 02D525015E
68	SP01906		6 pieces	Screw	Information for M300+: Used in 02D525011H, 02D525015E
69	SP01905		1 piece	Outer Ring	Information for M300+: Used in 02D525011H, 02D525015E
70	Not available		1 piece	Differential Housing	
71	Only available in K02		1 piece	O-Ring	
72	Only available in K02		1 piece	O-Ring	
73	Only available in K02		1 piece	O-Ring	Information for M300+: Used in 02D525011H, 02D525015E
74	Not available		1 piece	Shim	
75	Only available in K02		2 pieces	O-Ring	Information for M300+: Used in 02D525015E, 02D525016E
76	SP01868		1 piece	Screw	
77	SP00836	02D409399	1 piece	Radial Seal Ring	
78	Not available		1 piece	Housing	