

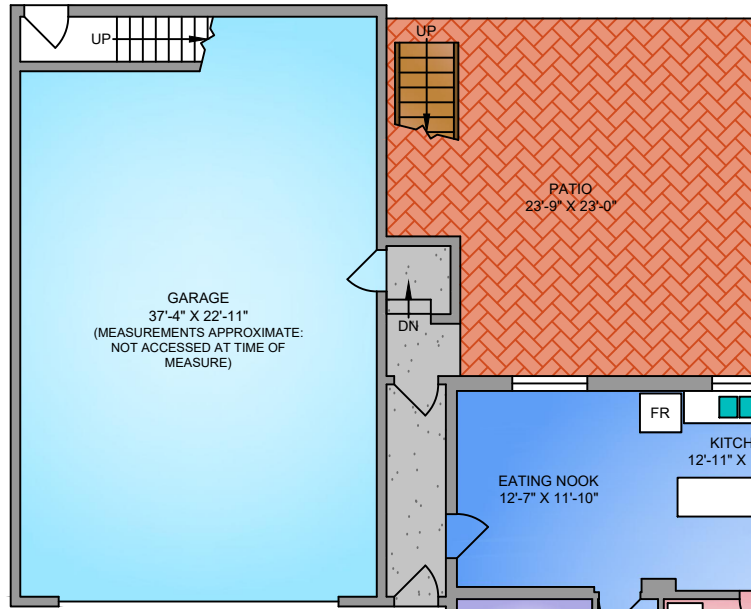
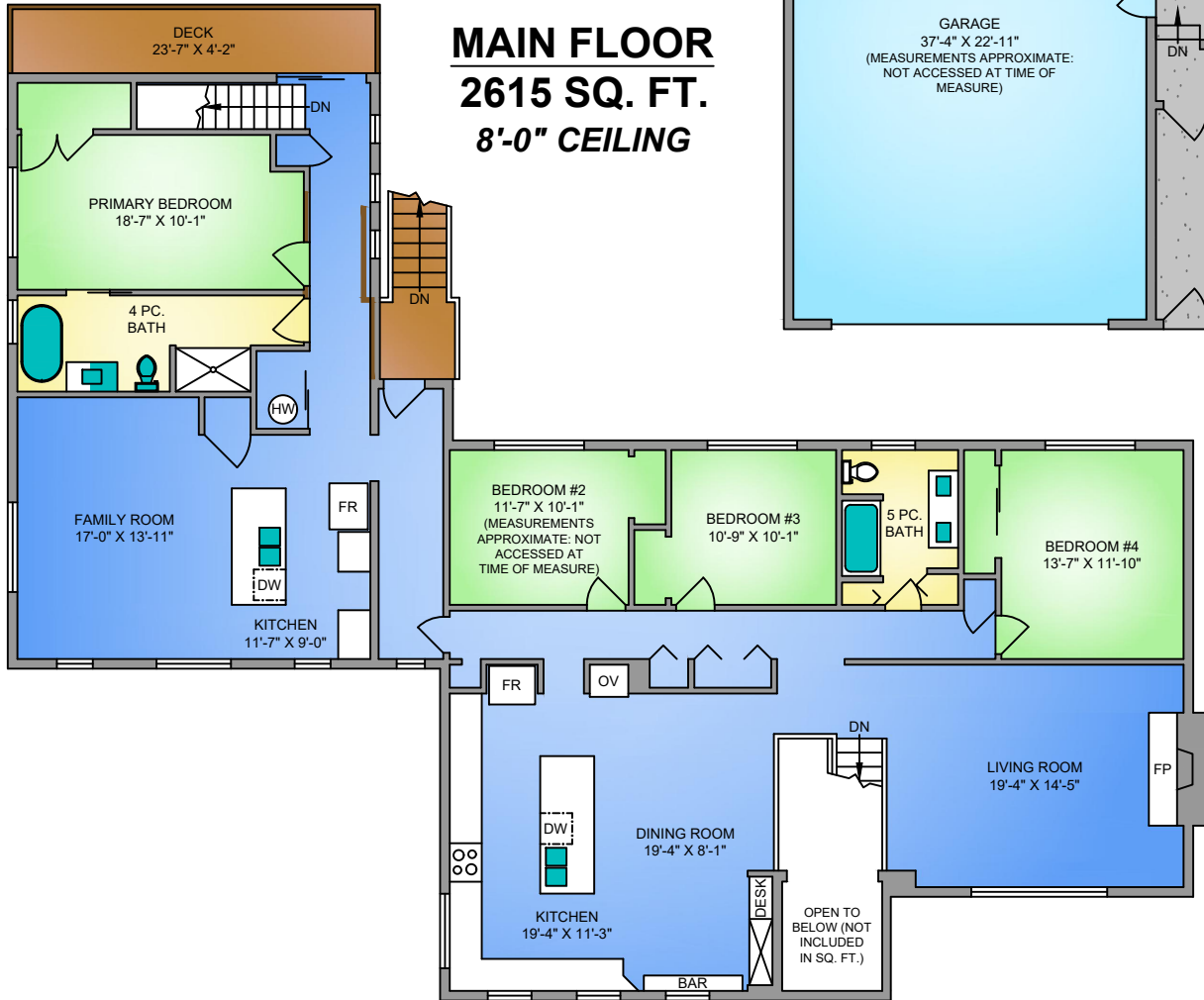
258 WESTWOOD ROAD
OCTOBER 12, 2021

Prepared by PROPER MEASURE MID ISLAND for the exclusive use of DARREN MCGEE
Plans may not be 100% accurate. Buyer must verify any critical measurement.

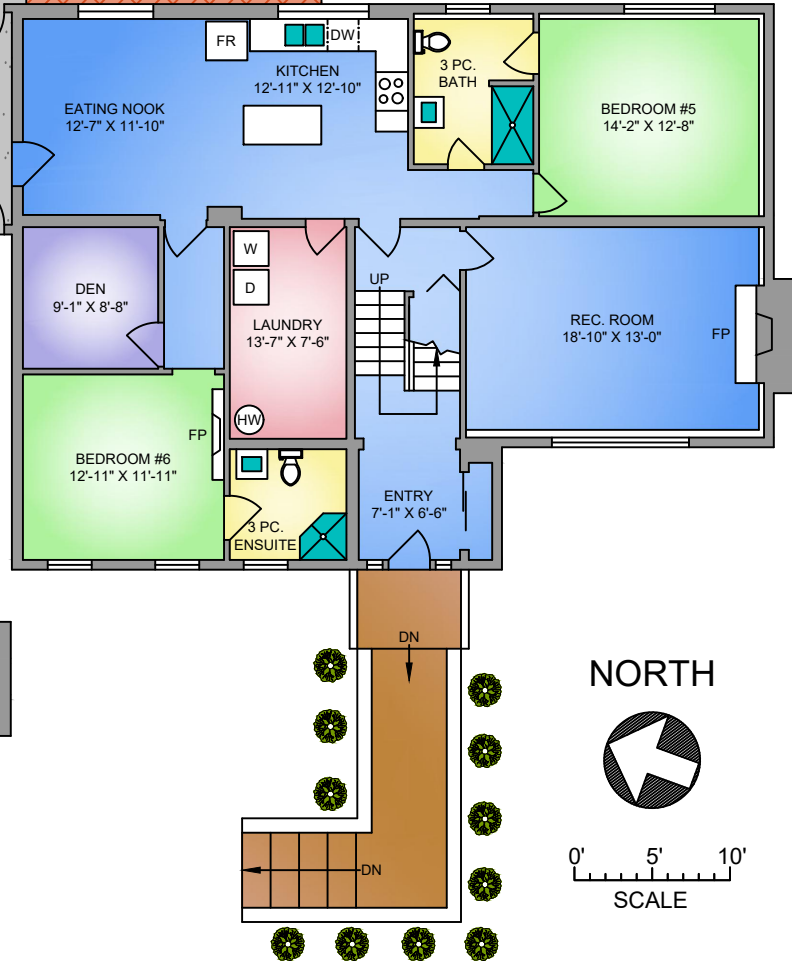
Private resale or modification of floor plans to a third party by any individual or entity other than Proper Measure Mid Island is strictly prohibited

FLOOR	AREA (SQ. FT.)		
	FINISHED	GARAGE	DECK / PATIO
MAIN	2615	-	98
LOWER	1646	935	503
TOTAL	4261	935	601

MAIN FLOOR
2615 SQ. FT.
8'-0" CEILING



LOWER FLOOR
1646 SQ. FT.
8'-0" CEILING



NORTH



0' 5' 10'
SCALE