

VillageRise

**A Toolkit for Sustainable
Community Development**



Locally-led Solutions for Lasting Change



TOGETHER WE CAN...

Empower communities with health solutions and economic opportunities—starting in Kenya, expanding worldwide.

From Struggle to Strength

“I used to rely on others to survive. Now, I run my own business and help other women in my community.”

— Milka Dan, Kanyapir CHEC Member

Milka is one of hundreds of women who have transformed their lives through a Community Health & Empowerment Club (CHEC).

With support from organizations implementing VillageRise, she gained health education, financial literacy, and seed capital to start a thriving tree farming business.

**This is the power of VillageRise —
turning resilience into opportunity.**





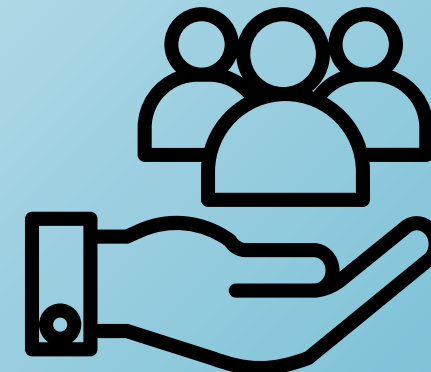
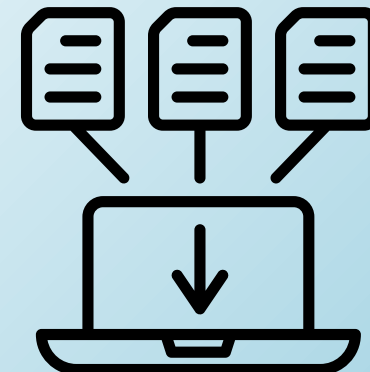
Problem Identification – Why Do We Need VillageRise?

-  Communities face complex challenges, including:
-  Poor Health Outcomes – Limited access to health education
-  Economic Hardships – Lack of financial literacy & sustainable income opportunities
-  Social Inequities – Barriers to leadership, especially for women
-  Traditional approaches often fail to create community driven, lasting change

 The Solution: VillageRise – A Toolkit for Sustainable Community Transformation

Introducing VillageRise – What Is It?

-  VillageRise is a comprehensive toolkit that equips organizations with:
- ✓ Step-by-step training materials
 - ✓ Structured surveys & data analysis
 - ✓ Facilitator guides & curriculum
 - ✓ Ongoing mentorship & virtual support
-  VillageRise provides everything needed to implement Community Health & Empowerment Clubs (CHECs)—structured, community-led groups that improve health, financial literacy, and leadership skills.



Why Choose VillageRise?

- ✓ Comprehensive & Ready-to-Use – No need to build from scratch
- ✓ Fully Trained Implementation – GHC provides complete training on the curriculum and CHEC model
 - ✓ Measurable Impact – Data-backed progress tracking
- ✓ Scalable & Customizable – Adapt to different communities
- ✓ Ongoing Support – Virtual mentorship & expert guidance

CHECs – The Model Behind VillageRise

- Community Health & Empowerment Clubs (CHECs) are how we implement VillageRise.
- CHECs provide structured, measurable training in health, financial literacy, and leadership.
- VillageRise enables any organization to set up CHECs and track impact.
- As of 2025, CHECs have been implemented in 19 villages across western Kenya, with some now operating independently.

CHECs – The Model Behind VillageRise



What's Included in each Phase of VillageRise?

Phase I: Training & Curriculum	Phase II: Ongoing Support & Data Analysis
30 hours of virtual training (5 weeks)	Bi-monthly check-ins (first 3 months)
Health, Finance, Leadership Curriculums	Monthly mentorship (months 4-24)
Entrepreneurship refresher training	Technical support for survey implementation
Practical video demos (tippy tap, gardens, detergent)	GHC-conducted data analysis (baseline, midline, endline)
Survey tools + Star Chart toolkit	Star Chart visuals + impact reporting for 2 CHECs
Certificate of Completion	

VillageRise Cost & Support Structure

💰 **Total Cost: \$10,000, delivered in two phases**

Phase I: \$5,000 – Training + Curriculum Package

- 30 hours of virtual training (5 weeks)
- Health, finance, business, and leadership curriculums
- Survey tools + facilitator documentation templates
- Unlimited trainees; Certificate of Completion

Phase II: \$5,000 – Ongoing Support + Data Analysis

- Bi-monthly and monthly virtual check-ins (24 months)
 - Technical support for data collection and fidelity
 - GHC-conducted data analysis (baseline, midline, endline)
 - Star Charts + reporting for 2 CHEC sites
- + Additional CHECs may incur a small added cost for analysis.

Who Is VillageRise For?

VillageRise is built for mission-driven organizations ready to lead sustainable, community-based change:

- NGOs & Nonprofits – Scale your community impact with proven tools
- Governments – Implement sustainable public health + economic programs
- Social Enterprises – Empower local leaders + boost livelihoods
- Faith-Based Groups – Drive values-based community transformation
- Universities – Support research, outreach, and field learning



How VillageRise Tracks Measurable Impact

VillageRise includes survey tools to measure real behavior change:

1. Baseline Survey – Captures community conditions before CHEC starts
2. Midline Survey (15 Months) – Measures progress
3. Endline Survey (24 Months) – Measures progress and Tracks long-term impact

Star Charts visualize progress at each stage



Baseline Survey → Midline Survey → Endline Survey
+ Data Analysis

*Empowering Communities,
Transforming Lives*

***“When we empower communities to lead, they don’t
just survive — they rise.”***

*— Faith Mageto, Executive Director,
Global Health Connections Kenya*

Join us in building a future where every village rises.



Get VillageRise – Next Steps

 Ready to implement VillageRise in your community?

 Contact Us: Mimi Gordon -
info@globalhealthconnections.org

 Visit Our Website:
www.globalhealthconnections.org