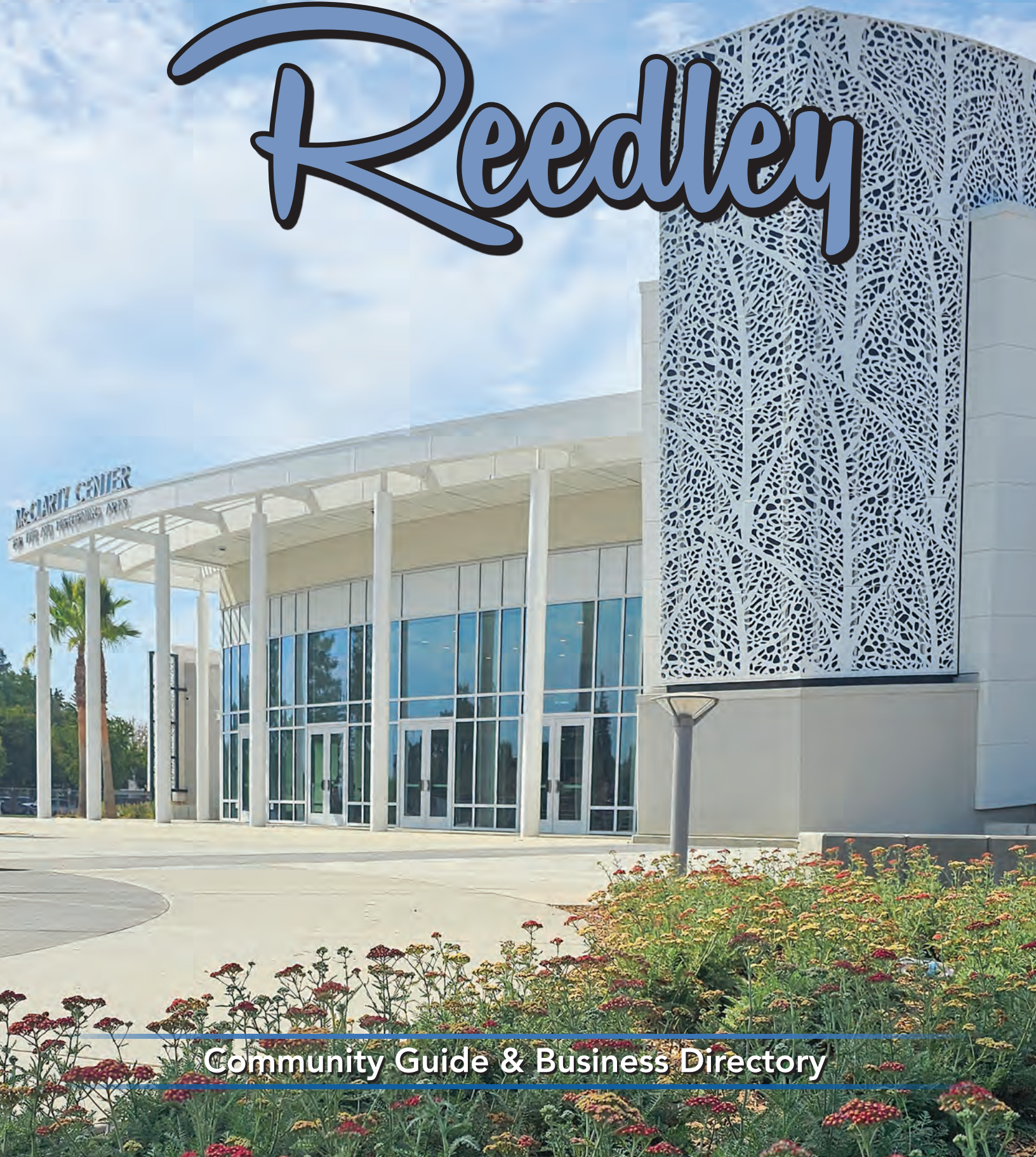


# Discover *Reedley*



Community Guide & Business Directory



# Providing Home, Community, & Care

**5** Levels of Residential  
Retirement Living



**PALM VILLAGE**  
RETIREMENT COMMUNITY



Independent Living | Assisted Living, Assisted Living Memory Care | Skilled Nursing & Rehabilitation

**(559) 638-6933**

**PalmVillage.com**

703 W. Herbert Avenue | Reedley, CA

Palm Village Retirement Community is designed to allow each resident the opportunity to enjoy their retirement living. Enjoy all of the comforts of home with the peace of mind that you are part of a safe, multi-level care community.



We are licensed not-for-profit 501 (c) (3) • We do Business in Accordance with the Federal Fair Housing Law  
COA #170 Lic.#100404809





# Contents

Welcome .....	5
Reedley Chamber .....	6-7
City Government .....	8
Points of Interest .....	10-12
Reedley History .....	14-15
Dining .....	16
Parks / Recreation .....	18
Education .....	19-22
Clubs / Organizations .....	25
Worship .....	26
Business Directory .....	30-33

Publisher: **MINERAL KING PUBLISHING, INC.**  
1059 G Street, Reedley, CA 93654  
(559) 638-2244

Community Engagement: **Tina Rice**

Graphic Design: **Maria DiGiacomo**

Editor: **Erik Valencia**, Reedley Chamber

Cover Photo: **Courtesy of Reedley College**

Photos by: **Danny Jimenez and Michael Miller**

*Every effort has been made to ensure the accuracy of information in this publication. Mineral King Publishing, Inc., and the Greater Reedley Chamber of Commerce assume no responsibility for misinformation. Please contact the Chamber with any corrections at (559) 638-3548. Reproduction or reuse of any photos and/or written material contained within this magazine is prohibited without the expressed written consent of the Greater Reedley Chamber of Commerce.*

Published February 2025



**GREATER REEDLEY**  
CHAMBER OF COMMERCE





#100406684/#COA261



# LET'S DO LIFE TOGETHER!



- Independent Living
- Assisted Living
- Memory Care
- Skilled Nursing
- Rehabilitation



[sierraview.org](http://sierraview.org)  
(559) 638-9226



# Welcome to Reedley!

**W**elcome to Reedley, California—a vibrant community nestled along the scenic Kings River. Known as “The World’s Fruit Basket,” Reedley is home to some of the most fertile farmland in the nation, producing a vast variety of fresh fruit enjoyed worldwide. Our charming city offers the perfect blend of small-town warmth and modern amenities, making it a great place to live, work, and explore. Reedley is rich in culture, history, and natural beauty. Visitors and residents alike enjoy a strong sense of community, with award-winning schools, unique local events, thriving businesses, and countless opportunities for outdoor recreation. Whether you’re here to enjoy a peaceful day by the river, explore our historic downtown, or experience our signature festivals, Reedley welcomes you with open arms. Whether you’re a lifelong resident, a first-time visitor, or considering making Reedley your home, you’ll find that our city is more than just a place—it’s a way of life.

## Community Facts

- ◆ The World’s Fruit Basket – Reedley ships more fresh fruit than anywhere else, with a rich agricultural legacy that fuels its economy.
- ◆ Safe & Welcoming – Consistently ranked among the safest cities in the Central Valley, Reedley offers a strong sense of community and quality of life.
- ◆ Gateway to Nature – Nestled along the Kings River and near Kings Canyon and Sequoia National Parks, Reedley is perfect for outdoor enthusiasts.
- ◆ Cultural Diversity – Reedley has embraced ethnic and religious diversity for over a century, celebrating its heritage through festivals and traditions.
- ◆ Education & Arts Hub – Home to Reedley College and the historic Opera House, the city fosters learning and a thriving arts scene.
- ◆ Business-Friendly City – With a strong agricultural base, growing downtown, and Chamber of Commerce support, Reedley is ideal for business growth.





# Reedley Chamber

## A Champion for Reedley!

Since 1914, the Greater Reedley Chamber of Commerce has been a driving force behind Reedley's growth, prosperity, and sense of community. Our Chamber is more than just a network—it's a catalyst for innovation, collaboration, and long-term success in Reedley. Today, we continue to be a dynamic and diverse business organization, dedicated to making a meaningful impact. We actively engage with local businesses, government leaders, public safety officials, educators, and nonprofit organizations to create a thriving, connected, and resilient community.



### GREATER REEDLEY CHAMBER OF COMMERCE

#### EXECUTIVE BOARD

**Matt Cochran**  
Board Chair

**Liset Garcia**  
Board Vice-Chair

**Jose Plascencia**  
Treasurer

**Gloria Banuelos**  
Secretary

**Neil Thonesen**  
Previous Past Chair

#### DIRECTORS AT LARGE

**Dr. Jerry Buckley**

**Justin Clopton**

**Amanda Garza**

**Caitlin Gipson**

**Aaron Khasigian**

**Luis Plaza**

**Alfredo Magallon**

*"We build a more vibrant and prosperous region by helping our members and community thrive through education, connectivity, and promotion."*

1044 G Street  
info@reedleychamber.com  
reedleychamber.com  
(559) 638-3548







**Erik W. Valencia**  
President & CEO



**Sara Montemayor**  
Marketing/Events



**Veronica Lopez**  
Office Manager



**Diego Lopez**  
Business Support

**NETWORK with us at a Chamber event!** With events occurring year-round the Chamber is an outstanding way to get to know people in the business community, as potential customers, partners and friends! Join us at Good Morning Reedley, the Chamber Business & Community Awards Gala, or one of the many other events created to connect you with other business professionals in our community.

**CONNECT with the Reedley Chamber!** Sign up to receive our e-news, follow us on Twitter or like us on Facebook and Instagram to view daily updates on Reedley Business and Community News.

**Utilize a Chamber RESOURCE to grow your business!** The Chamber offers many programs designed to provide value to our members. Acquire an important business skill at one of our Business Development Workshops or take advantage of other support programs available through our partners.

**Increase your VISIBILITY in the community!** Host an event, ribbon cutting ceremony, or sponsor one of our many monthly or annual events.

**Learn how the Chamber ADVOCATES for your business!** The Chamber works to inform you of local, statewide, and national issues affecting the business climate in our community. Attend our monthly Steering Committee Meeting, quarterly Government Affairs Committee Meetings or attend one of our mixers to directly connect with elected officials in our area.

**HAVE FUN!** While the Chamber has serious benefits, we help you enjoy yourself while you work. Getting to know your community through our business, educational and social events, you'll remember that the rewards of business can be personal as well as professional.







**Nicole R. Zieba,**  
Reedley City Manager  
1717 9th Street, Reedley  
(559)637-4200 ext. 212  
nicole.zieba@reedley.ca.gov

**Matthew Tuttle,** Mayor  
Council District 1  
Term: 12/2024-12/2028  
MTuttle@reedley.ca.gov

**Mary Fast,** Mayor Pro Tempore  
Council District 2  
Term: 12/2022-12/2026  
MFast@reedley.ca.gov

**Michael Crutchfield,** Council Member  
Council District 3  
Term: 12/2024 – 12/2028  
michael.crutchfield@reedley.ca.gov

**Scott Friesen,** Council Member  
Council District 4  
Term: 12/2022-12/2026  
SFriesen@reedley.ca.gov

**Christopher Arriaga,** Council Member  
Council District 5  
Term: 12/2024-12/2026  
christopher.arriaga@reedley.ca.gov

**Ruthie Greenwood,** City Clerk  
(559) 637-4200 Ext. 212  
ruthie.greenwood@reedley.ca.gov

# City Government



## Reedley Mayor and City Council

The City Council regularly meets on the second and fourth Tuesday of each month at 7:00 p.m. at the Reedley City Council Chambers located at 845 "G" Street, Reedley.

Correspondence for elected officials can be emailed to [ruthie.greenwood@reedley.ca.gov](mailto:ruthie.greenwood@reedley.ca.gov) or mailed to 1717 9th Street, Reedley, CA 93654.

City of Reedley | Population 26,087  
Elevation 348 ft. | (559) 637-4200 | [Reedley.com](http://Reedley.com)

## Reedley Police Department

843 G St, Reedley | (559) 637-4250 Emergency: 911



**Chief Marc A. Ediger**

The Reedley Police Department, in partnership with the community, strives to provide the highest quality of comprehensive professional law enforcement services to the citizens of Reedley. The Police Department is committed to preserving the exceptional quality of life that our citizens enjoy and keeping Reedley one of the safest communities in California.

## Reedley Fire Department

1060 D St, Reedley | (559) 637-4230 Emergency: 911



**Chief Michael Canales**

The Reedley Fire Department has been proudly serving the community since 1881. The Department prides itself in maintaining fast and efficient emergency services. The highly dedicated team of 45 men and women serving the community manage more than 1,200 calls per year.





## THE REGAL DENTAL

### Accepting New Patients

#### OUR SERVICES

- Free Orthodontics Consultation
- Dental Aesthetics
- Implants
- Crowns
- Extractions
- Dentures

**CALL US TODAY!**

559-638-1789

officestaff@theregaldental.com

1006 E. St Reedley, CA 93654



1601 10TH STREET REEDLEY, CA. 93654



**THE  
COMMUNITY GYM  
THAT SERVES YOU**

**(559) 638-9895**



## WEST COAST MENNONITE CENTRAL COMMITTEE

### ABOUT US

A worldwide ministry of Anabaptist churches, shares God's love and compassion for all in the name of Christ by responding to basic human needs and working for peace and justice. MCC envisions communities worldwide in right relationship with God, one another and creation.

*Established in 1920*

### MCC GLOBAL CENTER

1012 G Street

Open: Monday - Thursday

[mccglobalcenter@mcc.org](mailto:mccglobalcenter@mcc.org)

559 638 6911

## OUR SERVICES

- Immigration Services
  - Legal Consultations
  - Family Petitions
  - Green Card Renewals
- Transformative Justice
  - Conflict Resolution Training
- Global Learning Tours
- Young Adult Opportunities



Volunteer Opportunities



Relief Kits



Children Educational Tours



Quilting & Sewing



Coffee & Community Area



Visual Arts

**COME MAKE A KIT THAT IMPACTS THE  
GLOBAL COMMUNITY!**

1010 G street  
559 638 6911  
[westcoast@mcc.org](mailto:westcoast@mcc.org)





# Points of Interest

Nestled just below the Sierra Nevada foothills, Reedley provides a gateway into the incredible beauty of the mountainous landscape of the Eastern skyline. Reedley's location allows residents an active recreational lifestyle of a vast array of interests enhanced by proximity and the accompanied climate that allows for many year-round outdoor activities.



## THE KINGS RIVER & REEDLEY BEACH

Reedley sits along the banks of the Kings River, and its inland beach attracts swimmers, fishers, boaters, and water-skiing enthusiasts. Riverside parks delight families and friends looking for a place to park their picnics basket. Enjoy a float on the Kings River. Try the stretch from Goodfellow Bridge to the Wakehouse camping area, or for a longer ride, continue to Reedley Beach.



## DOWNTOWN REEDLEY

This lovely historic area includes specialty shops, restaurants, a museum and the painstakingly restored 1903 Reedley Opera House. Downtown plays host to community events throughout the year, from the Reedley Street Faire to Reedley Fiesta, and the Electrical Farm Equipment Parade. Many shops and restaurants have been around for decades, including the Pub, Uncle Harry's, Valentino's and Main Street Café.



## REEDLEY MUNICIPAL AIRPORT 4557 Frankwood Avenue (559) 637-9453

The Reedley Municipal Airport is located four miles north of Reedley City Limits. The Federal Aviation Administration (FAA) estimates that the Reedley Airport averages approximately 1,375 departures per month. There are currently 55 aircrafts based there. A park that can be used for picnics, parties, etc. is located on the site.



## REEDLEY WATER TOWERS

Clean, pure water was hard to keep in Reedley until the twin water towers were built. The first of these tanks was built in 1914 at a cost of \$4,950. The second was built in 1923 at a cost of \$6,599. Each tank has the capacity to contain 60,000 gallons of water. The towers underwent a major rehabilitation project during the summer of 2022.



## OLD SETH

This beautiful town clock is in the 1100 block of G Street and was crafted by Hie Seth Thomas Clock Company. M.A. Furlong, a jeweler in town ordered the clock in 1920, and it arrived in Reedley in 1921. The cost was \$1,000 plus freight. The clock underwent restoration in 2009.





## **REEDLEY HISTORICAL MUSEUM 1752**

**10th Street (559) 638-1913**

Situated in a 100-year-old building that was Reedley's first City Hall, Reedley Historical Society and Museum celebrates the town's rich history. Its offering includes Native American artifacts, antiques, farm equipment and other exhibits that honor the area's diversity. Admission is just a dollar for adults and 50 cents for kids, and it's open Tuesday and Saturday mornings from 9 a.m. to 12 p.m.



## **REEDLEY OPERA HOUSE/REEDLEY RIVER CITY THEATRE CO.**

**1720 10th Street (559) 638-6500**

Built in 1903, the Opera House was the forerunner of today's multipurpose community center. Its heyday ended in the early 1920s with the introduction and popularity of movie houses. In 1983, The Opera House was remodeled and in 1986 it was listed on the National Register of Historic Places. Today, the Opera House is home to Reedley's River City Theatre Company.



## **MCC GLOBAL CENTER**

**1012 G Street (559) 638-6911**

Mennonite Central Committee (MCC), a worldwide ministry of Anabaptist churches, shares God's love and compassion for all in the name of Christ by responding to basic human needs and working for peace and justice. Services they provide include Global Relief Kits, Quilting, Sewing, Visual Arts, Immigration Services, and Young Adults Programs. The relief center is home to a Quilting Museum, where many different quilts are on display. It is open Tuesday and Thursday to the public.



## **KOREAN HERITAGE PAVILLION**

**196 N. Reed Avenue**

The pavilion consists of a replica of the Korean Independence Gate (Dongnimmun) in Seoul, Korea, and 10 monuments honoring prominent Central California individuals who made important contributions to the Korean community.



## **HILLCREST TREE FARM & RAILROAD**

**6943 S. Reed Avenue (559) 638-2762**

Enjoy a tour of the farm on an exquisite half scale live steam narrow gauge railroad. Also enjoy children's play areas, trails & picnic areas. Open seasonally, with the train running on the weekends from 10 a.m. to 5 p.m.



## **HOBB'S GROVE**

**14265 E. Goodfellow Ave. (559) 356-3958**

Halloween at Hobb's Grove is exactly what one would hope for when desiring the ultimate haunted Halloween experience. The Midway at Hobb's Grove has an old-time feel and features warming fire pits, peddlers and entertainment. The Grove's ticketed attractions include The Haunted Forest, The Haunted Hayride, The Haunted House, and The Portal.





### **THE WAKEHOUSE** **850 Kings River Road (559) 637-9000**

The Wakehouse is a riverside venue, eatery, and cocktail lounge along the Kings River. Take a break here for dinner, entertainment, drinks, camping, or the full experience. This property has been a staple for river fun, camping and drinking for 30 plus years. Since building an attached concert venue they have hosted 10 national touring artists and several more fantastic local acts.



### **SWEET GIRL FARMS** **8358 S. Alta Ave (323) 314-1967**

There's nothing more exciting than finding locally grown farm fresh produce. Sweet Girl Farms is the most authentic Farm Stand in the Reedley area — offering residents and visitors a variety of products ranging from fresh fruit, jams, nuts, dried fruit, fresh vegetables, and specialty fresh cut flowers.



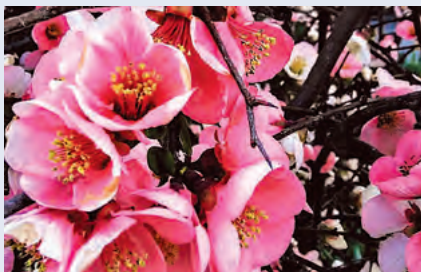
### **CEDAR VIEW WINERY** **1384 S. Frankwood Ave. (559) 787-9412**

Since 1999, Cedar View Winery has focused on crafting rare and eclectic wine varietals. Traditional and hand-crafted methods are used to produce the wines. This is a place where you can enjoy wine and the art of winemaking. Wine Tasting: Saturday & Sunday, Noon - 5 p.m.



### **WONDER VALLEY RANCH RESORT & CONFERENCE CENTER** **6450 Elwood Road (559) 787-2551 [wondervalley.com](http://wondervalley.com)**

Set on a 75-acre site with a lake, this ranch-style resort and conference center is set in the foothills of the Sierra Nevada Mountains and is 8 miles from Avocado Lake Park. You'll find no better place in California; or even the entire Western United States, at providing a more comprehensive and impressive list of facilities and activities for all types of functions.



### **BLOSSOM TRAIL** **[goblossomtrail.com](http://goblossomtrail.com)**

Reedley is located along the southern part of the renowned Fresno County Blossom Trail. The Blossom Trail is a 62-mile self-guided motor or bicycle tour through the blossoming orchards of Fresno County. The Blossom Trail runs the middle of February through early March.



### **FRUIT TRAIL** **[gofruittrail.com](http://gofruittrail.com) (559) 600-4271**

This self-guided tour through California's agricultural heartland was created through a partnership between the elected and civic leaders and the farmers in Eastern Fresno County. The Fruit Trail celebrates the beauty, flavor, and culture of this region. Enjoy orchards full of ripe fruit from the leading agricultural county in the world



# SEQUOIA PRINT & SHIP

**WE CAN HANDLE ALL YOUR PRINTING NEEDS!**

**WE ALSO SHIP WITH**



**2 MONTHS FREE**  
WITH ONE YEAR MAILBOX RENTAL

5871 St Reedley, CA 93654

(559) 638-0188

[www.SequoiaPrintShip.com](http://www.SequoiaPrintShip.com)



**"SERVING REEDLEY FOR 19 YEARS"**

- **Cardio, Weight and Functional Training Equipment**
- **ALL Group Xercise Included**
- **Free Fitness Assessment and Orientation**
- **Saunas**
- **Free Lockers**
- **Individual & Small Group Personal Training Available**
- **Tanning Booth and Basketball Courts**



**XCELERATE**  
FITNESS

● ● ● *find your pace*

**REEDLEY 638-2300**



**STRUGGLING WITH ADDICTION?**  
**FREEDOM IS ONE CALL AWAY—DIAL (888) 520-0620 TODAY!**

Central Valley Teen Challenge offers a life-changing, one-year residential program designed for adult men seeking recovery from drug and alcohol addiction. Since 2015, we've offered a Christ-centered approach, helping men break free from addiction and reclaim their lives—all at no cost. Central Valley Teen Challenge continues to be a beacon of hope and transformation for those ready to embrace a fresh start.

**IT'S MORE THAN RECOVERY—IT'S TOTAL TRANSFORMATION  
THROUGH JESUS CHRIST.**

f [centralvalleyteenchallenge](https://www.facebook.com/centralvalleyteenchallenge)

CENTRAL VALLEY TEEN CHALLENGE  
42675 ROAD 44, REEDLEY, CA 93654 | (569) 387-5132

@teenchallengecentralvalley



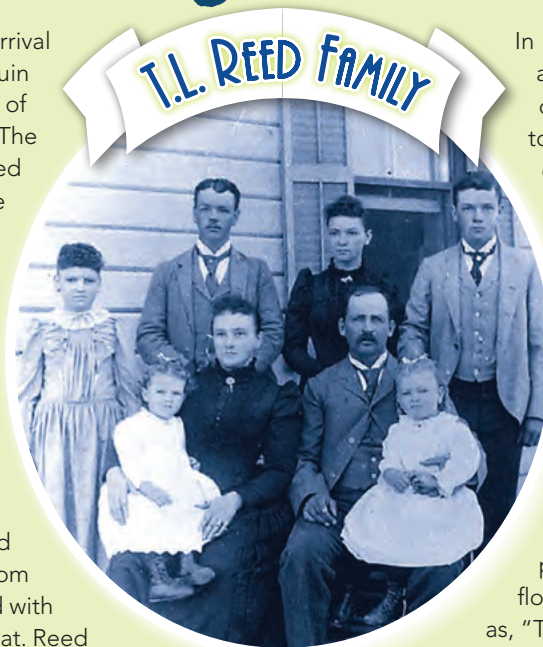


# Reedley History

**F**or hundreds of years before the arrival of white settlers, the San Joaquin Valley was home to a group of Native Americans known as the Yokuts. The Yokuts were a peaceful group, who lived along the Kings River in villages where they hunted, fished, and gathered their food.

The first white settlement, in the area that we now call Reedley, was established by the James Smith family in 1855. The Smiths operated a ferry service and hotel on the east bank of the Kings River, near today's Olson Avenue Bridge, until 1874.

In 1884, ten years after the ferry and hotel closed, a Civil War veteran from Ohio named Thomas Law Reed, arrived with his family from Yolo County to farm wheat. Reed was encouraged to move to the Reedley area by the 76 Land and Water Company. He was impressed by the possibilities of irrigation and purchased land from the company. Soon he was farming 12,000 acres between the Kings River and Smith Mountain.



In 1888, the Southern Pacific Railroad built a branch line through the area. Reed deeded a half-interest in a 360-acre town site to the railroad and in return they established a depot. The railroad named the new town "Reedley" in honor of Reed.

The rich land surrounding Reedley was dry a good part of the year, but the river made irrigation possible. Canals were built and during the 1890s wheat growing began to fade. Farmers turned to the more profitable work of growing grapes and tree fruit. The attraction was immediate, and settlers arrived from all parts of the world. Vineyards and orchards flourished. In time, Reedley became known as, "The World's Fruit Basket."

In 1913, twenty-five years after the town's founding, Reedley was incorporated. Today, Reedley is Fresno County's fourth largest city with a population of 26,087 – all because of the vision and hard work of early day pioneers, and of the many who followed.









## American

- Carl's Jr.**  
810 N. Reed Ave.
- City Donuts**  
1347 Manning Ave.
- Denny's**  
955 Manning Ave.
- Fosters Freeze**  
1460 11th Street
- Jack In The Box**  
605 N. I Street
- KFC**  
864 Manning Ave.
- Mainstreet Cafe**  
1052 G Street
- McDonald's**  
835 N. Reed Ave.
- Port of Subs**  
1079 Manning Ave.
- Reedley Sandwich Shop**  
1154 G Street
- Subway**  
567 I Street
- Subway**  
1343 E. Manning Ave.
- Super Burger Drive-In**  
1295 Manning Ave.
- The Bear Club**  
1695 Manning Ave.
- The Tradewinds Pub**  
1041 G Street
- The Wakehouse**  
850 N. Kings River Road
- TOGO's Sandwiches**  
1577 Manning Ave.
- Willie's Café**  
1201 G Street



## Mediterranean

- Kabab City**  
945 Manning Ave.
- Twisted Indian Street Food #2**  
1514 Manning Ave.



## Bar

- Denny's Cocktails**  
955 Manning Ave.
- El Viejon Bar**  
1261 G Street
- Hector's Bar & Grill**  
765 N. Columbia Ave.
- Odds Bodkins**  
1105 G Street
- The TradeWinds Pub**  
1041 G Street
- The Wakehouse**  
850 N. Kings River Road



## Dessert/Bakery

- Dessert/Bakery**  
**Baskin Robbins**  
585 I Street
- City Donuts**  
1347 Manning Ave.
- Doughnuts To Go**  
1347 Manning Ave.
- El Mundo de Sabores**  
1360 Manning Ave
- El Nopal Bakery**  
1360 G Street
- Jamba Juice**  
765 N. Reed Ave.
- La Espiga Bakery**  
1649 10th Street
- Munchies Bar**  
785 N. Reed Ave.
- Pasteleria Plaza Bakery**  
1617 11th Street
- Sweet Destination**  
1115 G Street
- The Honey Pearl Cafe**  
593 I Street



## Mexican

- Green Apple Taqueria**  
801 N. Reed Ave.
- Costa Dorada**  
1061 Manning Ave.
- El Monte**  
1726 12th Street
- El Mundo de Sabores**  
1360 Manning Ave.
- Hector's Bar & Grill**  
765 N. Columbia Ave
- Juanito's**  
819 Manning Ave.
- La Espiga**  
1649 10th Street
- Las Espuelas Carniceria y Taqueria**  
1614 G Street
- Los Rosales**  
43137 Road 52
- Mariscos El Tarasco**  
1474 E Manning Ave.
- Ortega's Taqueria**  
1401 I Street
- Taco Bell**  
1686 Manning Ave.



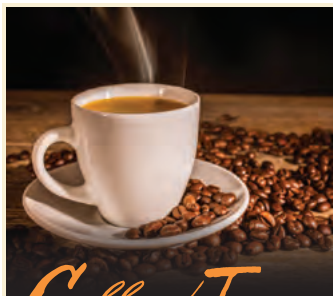
## Asian

- China Garden Express**  
773 N. Reed Ave.
- Sansei Japanese Restaurant**  
1135 E. Manning Ave.
- Sun China Chinese Restaurant**  
1526 Manning Ave.
- Yoi Japanese Food**  
781 N. Reed Ave.



## Italian/Pizza

- Domino's Pizza**  
561 I Street
- Little Caesars Pizza**  
924 Manning Ave.
- Me-n-Ed's Pizzeria**  
1085 Manning Ave.
- Papa Murphy's/Take 'N' Bake Pizza**  
803 E 11th Street
- The Pirate's Den**  
1550 Manning Ave
- Valentino's Pizzeria & Italian Restaurant**  
1043 G Street
- YR Pizza Planet**  
921 Manning Ave.



## Coffee/Tea

- Brick and Stone**  
1119 G Steet
- City Donuts**  
1347 Manning Ave.
- Doughnuts To Go**  
1145 11th Street
- Starbucks #1**  
1081 Manning Ave.
- Starbucks #2**  
1620 Manning Ave.
- Sweet Destination**  
1115 G Street
- The Honey Pearl Cafe**  
593 I Street





Sierra Kings is a community-based grant-maker committed to supporting activities and programs that improve local health and wellness.

## EAT FRESH!



Farmer's Market,  
Reedley College, \$19K

- Visit the Spring/Fall Reedley College Farmers Market
- Visit your local fruit and vegetable stands for seasonal produce
- Research recipes with plenty of fruits and veggies
- Make an eating plan each week

## GET ACTIVE!



Get Moving Program,  
Sierra View Homes, \$35K

- Participate in 30 minutes of physical activity each day
- Visit your local fitness centers
- Walk, run, and bike the Reedley Community Parkway Trail or Parlier Trail.
- Join a Zumba class, swimming, organized sport, etc.

## CHECK-IN!



Mental Health Awareness Month,  
A Touch of Holly, \$2K

- Practice mindfulness through meditation or yoga
- Explore your spirituality
- Seek therapy
- If you or someone you know is struggling with mental health, call/text the crisis line at 988 for immediate assistance

1011 G St Reedley CA, 93654  
(559) 726-2268  
[www.skhcd.org](http://www.skhcd.org)



## CHICAGO TITLE COMPANY 2024

177 YEARS



& GROWING

DEEPROOTS FOR A STRONG FUTURE

**Chicago Title brings you Peace of Mind knowing that your investment is safe for many years to come.**

For the best in title & escrow service, please contact:

### CHICAGO TITLE REEDLEY

1140 F Street | Reedley CA 93654  
(559) 638-8348 | [ChicagoTitleFresno.com](http://ChicagoTitleFresno.com)

STRENGTH | EXPERTISE | SERVICE



### Realty Concepts



**559-930-8449**

Realtor DRE #01135306  
[gbanuelos@realtyconcepts.com](mailto:gbanuelos@realtyconcepts.com)



Kings River from Cricket Hollow



# Parks & Recreation



**K**ey to Reedley is its exceptional recreational amenities. The City of Reedley Community Services Department and the Reedley Branch Library offer a variety of programs year-round that help enhance the quality of life for Reedley residents.

**Camacho Park**  
950 E. North Avenue

**Citizen's Park**  
1685 N. Thompson Avenue

**Cricket Hollow Park**  
1125 W. Olsen Ave.

**Luke Trimble Splash Park**  
196 N. Reed Avenue

**Mueller Park/Skate & Dog Park**  
100 N. East Avenue

**Pioneer Park**  
844 G Street

**Reedley Beach**  
1120 W. Olsen Avenue

**Reedley Branch Library**  
1027 E Street  
(559) 638-2818

**Reedley Community Center**  
100 N. East Avenue  
(559) 638-4203

**Reedley High School Aquatics Complex**  
477 Manning Avenue  
(559) 637-4203

**Reedley Municipal Airport**  
4557 S. Frankwood Avenue  
(559) 637-9453

**Reedley Sports Park**  
20349 E. Dinuba Avenue

**Smith Ferry Park**  
1449 S. Reed Avenue



# Education

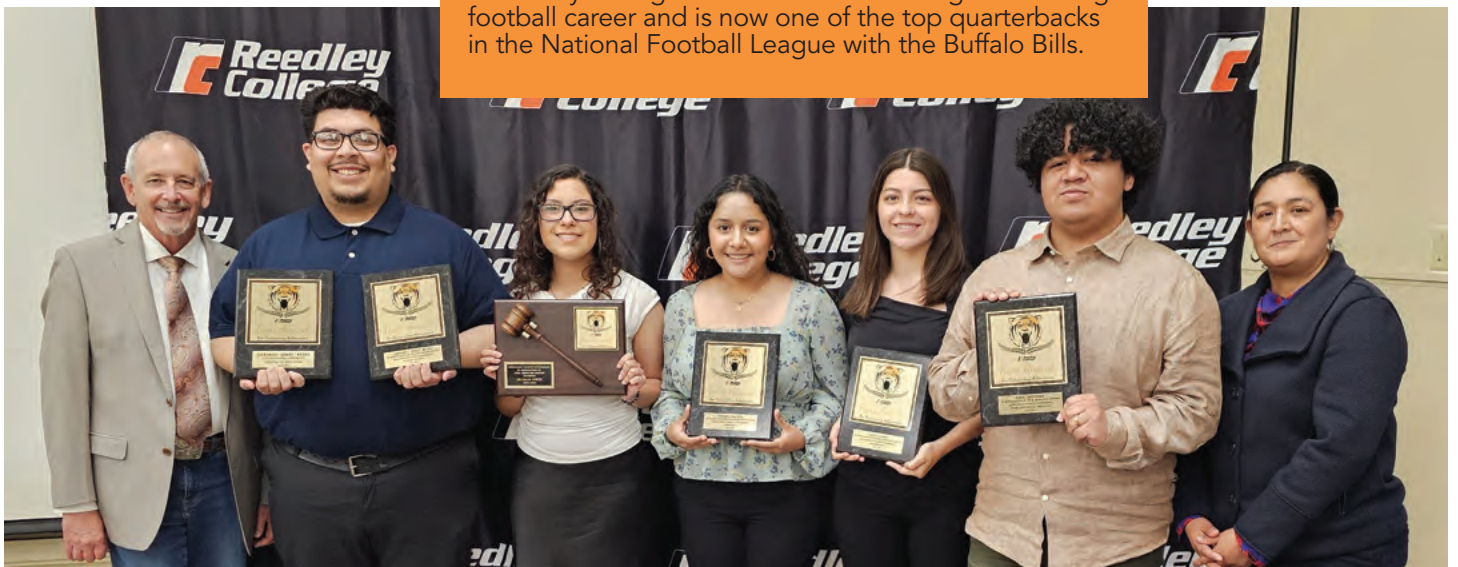
## REEDLEY COLLEGE (Community College)

Since 1926, Reedley College has strived to motivate and inspire students to succeed. Whether it be on their award-winning farm, helping manage 800 acres of forest at Sequoia Lake, up in the air with their Flight Science program, or competing at a championship level in athletics, Reedley College always strives to set a standard of campus-wide excellence. Reedley College offers an array of free student services, including financial aid, tutoring, academic advising and career and transfer counseling. Reedley College's programs are sought out by students all over the nation, with accredited programs in Forestry, Aviation Mechanics, ASE Certification, Dental Hygienist, and high-tech CAD instruction. These programs are recognized for excellence in curriculum and technology. The twelve highly competitive sports programs are a source of community pride, and have won championships at the local, state, and national levels. The Reedley College family will always be a proud partner of this amazing community. Go Tigers!



## Reedley College Facts

- Reedley College has an enrollment of over 15-thousand students per academic year.
- Located at the entrance of the city, the Reedley College campus features a 300 acre farm, associate degree and career training programs, new Math and Sciences Building, state-of-the-art Center for Early Childhood & Education facility, and much more.
- The flight science program has moved its flight school to the Reedley Municipal Airport, where students will fly the friendly skies in five brand new Skylender 600 airplanes.
- The brand new McClarty Center for Fine and Performing Arts will feature seasonal performances, cultural events, conferences, and host multiple campus events, as well as showcase our vocal and music departments, and student artwork.
- Reedley College is where Josh Allen began his college football career and is now one of the top quarterbacks in the National Football League with the Buffalo Bills.





## KCUSD Facts

### School sites: 23

Preschools: 8

TK-5: 6

K-5: 2

TK-8: 4

6-8: 3

9-12: 3

Educational Option Schools: 5

**Geographic coverage:** 600+ square miles including the communities of Reedley, Orange Cove, Dunlap, Miramonte and Squaw Valley

**Student enrollment: 10,319**

**Staff members: 1,334**

**SETTING THE PACE:** Through a strong partnership with Valley ROP, KCUSD offers the most comprehensive CTE program in the valley. Automotive, welding, CNA, culinary, robotics, engineering, graphic design and many more. A variety of courses are offered to both high school and middle school students.

### COLLEGE DEGREES IN HIGH SCHOOL:

Reedley Middle College High School has a 100% graduation rate. At this KCUSD charter high school, students take classes at Reedley College along with their regular high school classes. Many RMCHS students graduate with their high school diploma and their associate's degree, and it's all tuition free.

**THE FUN NEVER STOPS:** Students in elementary through high school have fun after school in our Expanded Learning Programs. This free program is open to all students during the school year and even runs during the summer months at many sites. Students go on field trips and enjoy hands-on enrichment activities in a safe, supportive environment.



## KINGS CANYON UNIFIED SCHOOL DISTRICT (Public K-12)

Students in the Kings Canyon Unified School District are leading the way. Our students are on the path to success, outscoring neighboring districts in state testing. Out of almost 70 similar schools in the state, Kings Canyon Unified ranks #1 in English Language Arts and Math. It's more than just the test scores. Kings Canyon Unified students are College and Career Ready too. Our students are prepared for the future—whether that means going to college or starting out in a career they've trained for through our robust Career Tech Education programs.







## ST. LA SALLE SCHOOL (Private K-8)

St. La Salle, a Catholic school founded by the Christian Brothers, provides a Christ-centered education in which children may grow in relationship with and respect for God, self, others, and the environment.

The school fosters a student-centered educational environment. They believe education means teaching the whole person. Each student is led to develop spiritually, morally, socially, emotionally, intellectually, and physically in a spirit of faith, hope and love.

Students are called to be active member in building a community of faith through participation in prayer, liturgies, sacraments, daily catechesis, and service.



## St. La Salle Facts

St. La Salle School believes that community is the heart of Christian education, not simply as a concept to be taught but as reality to be lived. The religious education of the children is not perceived as the responsibility of the school solely, but of the faith community at large.







## IMMANUEL SCHOOLS

(Private K-12)

Immanuel Schools' mission is to equip students to serve God and neighbor with mind, body, and soul, based on a Christ-centered foundation. The student population comes from all over the Central Valley, with 6 bus routes to help transport families in Visalia, Tulare, Hanford, Fresno, Clovis and the surrounding communities.



## Immanuel School Facts

Enrollment: **1,043**  
Junior High: **183**

Elementary (K-6): **487**  
High School: **374**

CENTRAL VALLEY DIVERSITY  
**25 CITIES / 4 COUNTIES**

BIBLICAL FOUNDATION:  
**100%** of K-12 students attend Bible classes and Chapel

COLLEGE PREP THAT WORKS:

**91%** of Immanuel graduates are college bound

AVERAGE CLASS SIZE: **20-24**

**Beyond the Classroom:** Students have countless opportunities to participate in extra-curricular and co-curricular activities and programs. We offer 18 Varsity teams with over 70% of our students playing sports. Our FFA program continues to grow with over 130-chapter members, and a thriving Performing Arts Program with 50% participation in Junior High & High School.

**50:** 1st Place Choral Awards

**41:** State Degree and 24 American Degree FFA Awards

**73:** Athletic Team Section Championships

**1:1:** Chromebooks for grades 7th-12th, and

**1:1:** Chromebooks accessible for 2nd-6th

**11:1:** Chromebooks for 1st

**10:1:** iPads for kindergarten

**80%** of Immanuel High School students play sports

**70:** Team Section Championships

**49:** Relay Team / Individual Section Championships

**3:** State Championships



OPENING JANUARY 2025



**EVERSPRING**  
Playschool



Quality care for infants and toddlers 0-3 years old  
Enrollment Information:  
[everspringplay.com](http://everspringplay.com)

**MasterStorage365**  
Experience It  
**Storage Reimagined!**

**THERE'S NO COMPARISON**



**YOU HAVE TO SEE FOR YOURSELF!**

**State-of-the-Art Facility**

- General Storage
- Business Storage
- Industrial Shop Storage
- Enclosed Inside RV Storage
- Climate-Controlled Storage
- Office Suites - Fully Furnished
- Conference Facility
- Mailboxes



**(559) 743-1028**  
1219 E. Dinuba Ave. | Reedley  
[www.MasterStorage365.com](http://www.MasterStorage365.com)

**REEDLEY**



**LIONS CLUB**

SERVING SINCE 1922  
"WE SERVE"

**Our Mission**  
To empower volunteers to serve their communities, meet humanitarian needs, encourage peace and well-being and promote international understanding through Lions Clubs

**Reedley Lions Club**  
P.O. BOX 41 Reedley, CA 93654  
[reedleylions@gmail.com](mailto:reedleylions@gmail.com)

**BLOSSOM TRAIL**



**PHOTOGRAPHY**  
Family, Student and Business Portraits  
Reedley Studio or On Location  
**(559) 637-4222**  
[www.BlossomTrailPhoto.com](http://www.BlossomTrailPhoto.com)

**ESTD REEDLEY 2011**  
**SANDWICH SHOP**

**559.643.0025**

1154 "G" Street, Reedley, CA 93654



**1752 10th Street**

**Tuesdays & Saturdays**  
**9:00 a.m. to 12:00 p.m.**

**559-638-1913**



**THIS IS OUR CLASSROOM.**



Lorenzo Arreola  
Wildland Fire  
Class of 2025

**Your campus. Your future. Your turn.**

**Reedley  
College**



[reedleycollege.edu](http://reedleycollege.edu)  
**#GOTIGERS**



Reedley Hillcrest



# Clubs/Community Organizations

**Airtime BMX**

300 E American Ave  
Reedley, CA 93654  
(559) 696-0516  
airtimebmxinfo@gmail.com

**American Legion**

PO Box 44  
Reedley, CA 93654  
(559) 638-5912

**Boys and Girls Club**

1106 11th Street  
Reedley, CA 93654  
(559) 743-7537  
reedleybgc@gmail.com

**Catholic Daughters of America**

Lady of Grace Court #2637  
(559) 591-5403

**Catholics in Action**

1060 F Street  
Reedley, CA 93654  
(559) 638-2012  
saintanthonychurch\_reedley@comcast.net  
saintanthonychurch-reedley.org

**Community Life Garden**

22899 E Manning Ave  
Reedley, CA 93654  
(714) 200-3684  
david@communitylifegarden.org

**Community Youth Ministries**

1592 11th Street, Suite E  
Reedley, CA 93654  
(559) 638-6585  
info@cym.us

**CPT Joe F. Lusk II Memorial Foundation**

242 W. Palm  
Reedley, CA 93654  
(559) 859-2865  
susan.francis.lusk@gmail.com  
www.joelusk.org

**Cruising for Jesus**

804 E 11th Street  
Reedley, CA 93654  
(559) 708-2351  
horacioalemansr@gmail.com

**Fraternal Order of Eagles**

1230 11th Street  
Reedley, CA 93654

**Greater Reedley Chamber Junior Board**

1044 G Street  
Reedley, CA 93654  
(559) 638-3548  
support@reedleychamber.com  
reedleychamber.com/junior-board

**Kiwanis Club of Reedley**

1155 E Springfield Ave  
Reedley, CA 93654  
(559) 638-9226

**Knights of Columbus Council #10264**

404 Manning Ave  
Reedley, CA 93654  
(559) 999-0454

**Praetorian Water Polo Club**

Boys Water Polo: (209) 947-3112  
Girls Water Polo: (559) 974-8464  
praetorianwaterpolo.com

**R-Kids Club**

1362 L Street  
Reedley, CA 93654  
(559) 638-8123  
Reedley 4H Club  
reedley4hclub@gmail.com

**Reedley Area Veterans**

PO Box 1626  
Reedley, CA 93654  
(559) 638-4879  
reedleymbc.org

**Reedley Boy Scouts - Troop 282**

(559) 737-2601  
reedleytroop282@gmail.com

**Reedley Community Services**

100 N. East Ave  
Reedley, CA 93654  
(559) 637-4203  
www.reedley.ca.gov/community-services

**Reedley Elks Lodge 2699**

760 F Street  
Reedley, CA 93654  
(559) 618-1564  
elks2699@gmail.com  
**Reedley Friendship House**  
1128 E Street  
Reedley, CA 93654  
(559) 260-6688

**Reedley Historical Society**

1752 10th Street  
Reedley, CA 93654  
(559) 638-1913

**Reedley Lions Club**

PO Box 41  
Reedley, CA 93654  
(559) 638-7051  
wayne@brandtfarms.com

**Reedley Little League**

PO Box 1313  
Reedley, CA 93654  
(559) 285-1523

**Reedley Marlins**

reedleymarlinsswim17@gmail.com  
reedleymarlinsswim.com

**Reedley Rotary Club**

PO Box 1161  
Reedley, CA 93654  
www.reedleyrotary.com

**Reedley Vietnam Veterans**

828 J Street  
Reedley, CA 93654  
reedleyyouthfootball@comcast.net

**Serve Reedley**

819 W Parlier Ave  
Reedley, CA 93654  
(559) 403-4342  
www.servereedley.org





# Worship



## **Armenian Apostolic Church**

1249 E St.  
Reedley, CA 93654  
(559) 638-2440

## **Christ Lutheran Church**

1245 N Frankwood Ave.  
Reedley, CA 93654  
(559) 638-2112  
CLCReedleysecretary@gmail.com  
www.CLCreedley.org

## **Church In the Basement**

1595 S. Riverview  
Reedley, CA 93654  
(559) 859-8727

## **Community Christian Fellowship**

1547 13th St.  
Reedley CA 93654  
(559) 638-1604

## **Cornerstone Community Church**

2160 11th St.  
Reedley CA 93654  
mstanlyo@sbcglobal.com

## **Cruising for Jesus**

804 E 11th St.  
Reedley, CA 93654  
(559) 638-4449

## **El Faro Community Church**

790 E Evening Glow Ave  
Reedley, CA 93654  
(559) 743-7010

## **Faith Community Church of Reedley**

314 W Manning Ave.  
Reedley, CA 93654  
(559) 638-2730  
www.reedleyefc.org

## **First Mennonite Church**

1208 L St.  
P.O. Box 111  
Reedley, CA 93654  
(559) 638-2917  
fmcreedley@gmail.com

## **First South Baptist Church**

729 E Manning Ave.  
Reedley, CA 93654  
(559) 638-3881

## **First United Methodist Church**

1461 11th St  
Reedley, CA 93654  
(559) 638-2142  
ReedleyFirst@gmail.com

## **Heritage Church Reedley**

920 F St.  
Reedley, CA 93654  
(559) 375-6783  
pastorjimbaker@gmail.com

## **Iglesia Bautista Fundamental**

729 E. Manning Ave  
Reedley, CA 93654  
(559) 393-8381

## **Kingdom Hall of Jehovah's Witnesses**

8254 S. Frankwood Ave.  
Reedley, CA 93654

## **LIFEhouse Valley Church**

1445 N Frankwood Ave.  
Reedley, CA 93654  
(559) 638-2200  
ritalvc@gmail.com

## **Methodist Fellowship Church**

1506 12th St  
Reedley, CA 93654

## **Redeemer's Church**

819 W. Parlier Ave.  
Reedley, CA 93654  
(559) 638-3435  
info@redeemerschurch.com  
www.redeemerschurch.com

## **Reedley Apostolic Praise Tabernacle**

765 E 11th St  
(559) 980-1379

## **Reedley Full Gospel Tabernacle - Assembly of God Church**

519 E 11th St.  
Reedley, CA 93654  
(559) 638-2739  
revronroberts@gmail.com  
www.reedleyfullgospel.com

## **Reedley Buddhist Church**

2035 15th St.  
Reedley, CA 93654  
(559) 905-3107  
www.ReedleyBC.org

## **Reedley Mennonite Brethren Church**

1362 11th St.  
Reedley, CA 93654  
(559) 638-8123  
www.reedleymbc.org

## **Reedley 7th day Adventist Church**

1119 E St.  
Reedley, CA 93654  
(559) 393-8257

## **Reedley Harvest Church**

856 S Reed Ave.  
Reedley, CA 93654  
(559) 638-8882

## **Saint Anthony's Roman Catholic Church (Old)**

1060 F St.  
Reedley, CA 93654  
(559) 638-2010  
stanthonychurch\_reedley@comcast.net  
www.saintanthonyschurch-reedley.org

## **Saint Anthony's Roman Catholic Church (New)**

1018 N Frankwood Ave.  
Reedley, CA 93654  
(559) 638-2012  
stanthonychurch\_reedley@comcast.net  
www.saintanthonyschurch-reedley.org

## **United Pentecostal Church of Reedley**

1408 J Street  
Reedley, CA 93654  
(559) 901-3650







# The City of Reedley

Connect with your community at  
[www.reedley.com](http://www.reedley.com)

005583



## Allstate

AUTO - HOME - LIFE - BUSINESS

- ✓ No Broker Fees
- ✓ Competitive Rates
- ✓ Superior Customer Service



Jose Placencia  
Agency

### Community Leader Community Volunteer

- Board Member: Boys and Girls Club of Fresno County
- Board Member Emeritus: Valley PBS
- Chairman: California Hispanic Chambers of Commerce Foundation
- Board Member: California State Department of Insurance Task Force
- Past Chairman: Reedley Chamber of Commerce
- Past Chairman: United Health Centers Foundation of the San Joaquin Valley
- Past Chairman: Valley PBS
- Past President: Central California Hispanic Chamber of Commerce



**Allstate**  
You're in good hands.

1318 E. Manning Ave. • Reedley, CA 93654 • **559-638-8930**

LIC #OD14415 • [jose.placencia@allstate.com](mailto:jose.placencia@allstate.com)

009042





**KINGS RIVER  
CONSERVANCY**

JOIN US IN OUR ADVENTURE OF  
PROVIDING ACCESS, EDUCATION,  
AND CONSERVATION ALONG THE  
KINGS RIVER

Volunteering Stewardship Advocacy

Nature Walks

Youth Programs

Connecting  
with  
the Community

Water Safety

Supporting Wildlife



Scan the code to become  
a member and share our  
love of the Kings River

**KINGSRIVERCONSERVANCY.ORG**



Reedley Car Show



**Lee's Service**  
*Reedley • Fresno*  
**SINCE 1949**



1445 I Street • Reedley



5774 S. Toyota Place • Fresno

**Tires • Retreading • Auto Service**

**Auto Service • Commercial • Ag  
Tires & Wheels • Retreading  
Passenger • Light Trucks**

**WE CARRY ALL THE FINEST BRANDS OF TIRES**

**BRIDGESTONE**



**GOODYEAR**

**Firestone**

**YOKOHAMA**

**www.LeesService.com**

**TWO LOCATIONS**

**Reedley • (559) 638-3535**

**Fresno • (559) 276-3535**





Reedley Water Towers



# Chamber Business Directory

## ADVERTISING

### CEIS, LLC

2110 Ranch Road 620  
P.O. Box 341432  
Austin, Texas 78734

### Conquest Media Group

1145 E. Dinuba Ave. #1115  
Reedley, CA 93654  
(661) 558-1899  
josh@conquestmg.com

### Mid Valley Times

1056 G Street  
Reedley, CA 93654  
(559) 638-2244

### Valley Yellow Pages

1850 N. Gateway Blvd.  
Fresno, CA 93727  
(800) 350-8887

## AG SERVICES

### Alliance HR Management Group

975 I Street  
Reedley, CA 93654  
(559) 777-5981

## AUTOMOTIVE SERVICES

### Martens Chevrolet

1050 I Street  
Reedley, CA 93654  
(559) 638-2240  
martenschevrolet@comcast.net

## BANKS

### Bank of the Sierra

1098 W. Manning Ave.  
Reedley, CA 93654  
(559) 638-1602

### Educational Employees Credit Union

873 W North Ave.  
Reedley, CA 93654  
559-437-7700  
www.myeecu.org

### FFB Bank

7690 N. Palm Ave.  
Fresno, CA 93711  
(559) 900-6323  
jclopton@FFB.bank

### Mechanics Bank

1003 I Street  
Reedley CA 93654  
(559) 638-8131

## BAKERY

### Pasteleria Plaza

1617 11th Street  
Reedley, CA 93654  
(559) 638-1242  
pasteleriaplaza@gmail.com

## BUSINESS SERVICE CENTER

### Valley Community SBDC

390 W. Fir Street  
Clovis, CA 93612  
(559) 324-6403  
vcsbdc@cloviscollege.edu

## CAFÉ

### Brick and Stone Coffee

1119 G Street  
Reedley, CA 93654  
559-859-2013  
hello@brickandstonecoffee.com

## CANDY, COOKIES AND TREATS

### 559 Honey Company

13820 S Academy Ave.  
Kingsburg, CA 93631  
(559) 356-5475  
zentnerbenjamin@yahoo.com

### It's Cookie Time

(559) 847-7491

## CAR WASH

### Kimo's Tropical Car Wash

790 I Street  
Reedley, CA 93654  
(559) 637-7234

## CHAMBERS OF COMMERCE

### Dinuba Chamber of Commerce

210 N. L Street  
Dinuba, CA 93618  
(559) 591-2707  
health@dinubachamber.com

### Kingsburg District Chamber of Commerce

1475 Draper Street  
Kingsburg, CA 93613  
(559) 897-1111  
info@kingsburgchamber.com

### Greater Reedley Chamber of Commerce

1044 G Street  
Reedley, CA 93654  
(559) 638-3548  
support@reedleychamber.com

### Sanger District Chamber of Commerce

1789 Jensen Ave. Suite B  
Sanger, CA 93657  
(559) 875-4575  
sangerchamber@gmail.com

### Selma District Chamber of Commerce

1821 Tucker Street  
Selma, CA 93662  
(559) 891-2235  
chamberdirector@cityofselma.com

## CLUBS/ORGANIZATIONS

### Boys and Girls Club of Fresno

1106 11th Street  
Reedley, CA 93654  
(559) 743-7537  
reedleybgc@gmail.com

### Community Life Garden

22899 E. Manning Ave.  
Reedley, CA 93654  
(714) 200-3684  
david@communitylifegarden.org

### Cruising for Jesus

804 E. 11th Street  
Reedley, CA 93654  
(559) 708-2351  
horacioalemansr@gmail.com

### Kiwanis Club of Reedley

1155 E. Springfield Ave.  
Reedley, CA 93654  
(559) 638-9226

### Reedley Elks Lodge 2699

760 F. Street  
Reedley, CA 93654  
(559) 638-5591  
Elks2699@gmail.com

### Reedley Historical Society

1752 10th Street  
Reedley, CA  
(559) 638-1913

### Reedley Lions Club

P.O. Box 41  
Reedley, CA 93654  
(559)-638-7051  
wayne@grantfarms.com

### Reedley Rotary Club

P.O. Box 1161  
Reedley, CA 93654  
www.reedleyrotary.com

## CONSERVATION ORGANIZATION

### King & River Conservancy

P.O. Box 1550  
Reedley, CA 93638  
(559) 787-9500  
kingsriverconservancy.org

## CONSTRUCTION

### Crutchfield Construction

523 N. Buttonwillow Ave.  
Reedley, CA 93654  
(559) 723-7462  
crutchfield.abner1111@gmail.com

### Wes Isaac Construction Inc MD Ventures

933 G Street  
Reedley, CA 93654  
(559) 638-1228  
therussellisaac@gmail.com

### Yanez Construction

42931 Road 52  
Reedley, CA 93654  
(559) 638-6644

## COMMUNITY FOUNDATIONS

### Central Valley Community Foundation

1260 Fulton Street, Suite 200  
Fresno, CA 93721  
(559) 226-5600

## CONVENIENCE STORE

### Circle K N-S Manning

1577 E. Manning Ave.  
Reedley, CA 93654  
(559) 356-2859  
dinuba.circlek@gmail.com

## CERTIFIED PUBLIC ACCOUNTANT

### Boos Camp & Associates, a Professional Corporation

1047 I Street  
Reedley, CA 93654  
(559) 638-8894

### Martin and Just, LLP

1580 11th Street  
Reedley, CA 93654  
(559) 638-6444  
randy@martinandjust.com

### Stephen L. German Accounting Corporation

1001 G Street  
Reedley, CA 93654  
(559) 638-9248  
sgcpa@accountant.com



# Chamber Business Directory

## DAYCARE

**Everspring Playschool**  
(805) 280-6615  
jessicab@everspringplay.com

## DENTAL SERVICES

**Ikuta Dental Healthcare**  
1112 C Street  
Reedley, CA 93654  
(559) 638-6312

**Mark A Luzania, DDS Inc**  
1117 G Street  
Reedley, CA 93654  
(559) 638-1777

**The Regal Dental**  
1006 E Street  
Reedley, CA 93654  
(559) 638-1789  
theregaldental@gmail.com

## DIALYSIS CARE

**Fresenius Medical Care**  
790 E. Manning Ave.  
Reedley, CA 93654  
(559) 643-2275

## DOMESTIC VIOLENCE SHELTER AND SUPPORT SERVICES

**Marjorie Mason Center**  
1015 G Street  
Reedley, CA 93654  
(559) 487-1326  
mmc@mcenter.org

## EDUCATION

**Community Youth  
Ministries**  
1592 11 th Street Suite E  
Reedley, CA 93654  
(559) 638-6585  
info@cym.us

**Immanuel Schools**  
1128 S Reed Ave.  
Reedley, CA 93654  
(559) 638-2598  
Immanuelschools.com

**Kings Canyon Unified**  
School District  
1801 10th Street  
Reedley, CA 93654  
(559) 305-7005

**State Center Community  
College**  
995 N. Reed Ave.  
Reedley CA 93654  
(559) 494-3000  
www.reedleycollege.edu

**Valley Regional  
Occupational Program  
(ROP)**  
310 W. Myrtle Ave.  
Reedley, CA 93654  
(559) 876-2122

## ELECTRICIAN

**Egli Electric**  
(559) 206-6962  
support@eglielectric.net

## ENTERTAINMENT AND ATTRACTIONS

**Hobbs Grove**  
P.O. Box 1073  
Sanger, CA 93657  
(559) 356-3958  
info@hobbsgrove.com

**Hillcrest Farm and Shop**  
6943 S. Reed Ave.  
Reedley, CA 93654  
(559) 638-2762  
hillcrestreedley.com

**Reedley River City  
Theatre Company**  
1720 10th Street  
Reedley, CA 93654  
(559) 638-6500  
info@rctcreedley.com

**Wonder Valley Ranch**  
6450 Elwood Road  
Sanger, CA 93651  
(559) 787-2551  
barbara@wondervalley.com

## FARM INDUSTRY

**Brandt Farms, Inc**  
6040 Ave. 430  
Reedley, CA 93654  
(559) 638-6961  
info@brandtfarms.com

**Bravante Produce**  
1356 W Buttonwillow Ave.  
Reedley, CA 93654  
(559) 638-2929  
www.bravanteproduce.com

**Gar Bennett Inc.**  
8246 S. Crawford Ave.  
Reedley, CA 93654  
(559) 638-6311

**Kings River Tractor**  
1230 G Street  
Reedley, CA 93654  
(559) 638-2205  
www.kingsrivertractor.com

**Lily & Blossom Trail Fruit  
Stand**  
18501 E. Kings Canyon Rd.  
Sanger, CA 93657/93631  
559-663-8162

**Sweet Girl Farms**  
8358 S. Alta Ave.  
Reedley, CA 93654  
(323) 313-1967  
sweetgirlfarms@gmail.com

**Trinity Packing Company**  
18700 E. South Ave.  
Reedley, CA 93654  
(559) 743-3913  
samc@trinitypacking.com

## FUNERAL SERVICES

**Sterling and Smith Funeral  
Home**  
139 W. Mariposa Street  
Dinuba, CA 93618  
(559) 595-7940  
marioz@sterlingmithftd.com

**The Dopkins Co. Inc**  
2200 S Reed Ave.  
Reedley, CA 93654  
(559) 638-7000  
loc3522@sci-us.com

## GOVERNMENT SERVICES

**Fresno County  
Department of Social  
Services**  
205 W. Pontiac Way Suite #2  
Clovis, CA 93621  
(559) 600-2300

**Fresno County Economic  
Development Corporation**  
1060 Fulton Street 4th Floor  
Fresno, CA 93721  
(559) 476-2500

**Fresno Regional  
Workforce Development  
Board**  
2125 Kern Street Suite 208  
Fresno, CA 93721  
(559) 490-7100  
www.frwdb.net

**Proteus Inc.**  
2570 Jensen Ave. Suite 113  
Sanger, CA 93657  
(559) 875-7146

## GYM

**Fitness Quest Health Club**  
160 11th Street  
Reedley, CA 93654  
(559) 638-9895

**Gnardog CrossFit**  
960 G Street  
Reedley, CA 93654  
(559) 743-7860  
matt@gnardogcrossfit.com

**Ripped by Rivas**  
1601 10th Street  
Reedley, CA 93654  
(559) 638-9895  
salrivas15@gmail.com

**Xcelerate Fitness**  
555 I Street  
Reedley, CA 93654  
(559) 638-2300

## HARDWARE STORE

**Golden Valley Ace Hardware**  
975 E. Manning Ave.  
Reedley, CA 93654  
559-743-7888  
goldenvalleyacehardware@  
gmail.com

**Reedley Lumber and  
Window Inc.**  
1547 G Street  
Reedley, CA 93654  
(559) 638-2512

## HEALTH AND WELLNESS SERVICES

**Dr. Steven L. Olfert, D.C.**  
1926 11th St.  
Reedley, CA 93654  
559-638-2558

**Revitalize Health PC**  
960 G Street  
Reedley, CA 93654  
559-249-9280  
hydrate@revitalizehealthiv.com

## HEALTH SERVICES NONPROFIT

**California Health  
Collaborative**  
1680 West Shaw Ave.  
Fresno, CA 93711-3504  
(559) 221-6315  
aarevalo@  
healthcollaborative.org

**Sierra Kings Health Care  
District**  
1011 G Street  
Reedley, CA 93654  
(559) 726-2268



# Chamber Business Directory

## HOME DÉCOR

### Reedley Trading Post and Interiors

965 I Street  
Reedley, CA 93654  
(559) 637-1177  
reedleytradingpost@msn.com

## INSURANCE SERVICES

### Allstate Kings Canyon Insurance Group

1318 E. Manning Ave.  
Reedley, CA 93654  
(559) 638-8930  
joseplascencia@allstate.com

### Horstmann Financial & Insurance Services

205 E River Park Circle Suite 220  
Fresno CA 93720  
(559) 447-3965  
khuebert@horstmannfis.com

### Reedley Insurance Agency

1146 G Street  
Reedley, CA 93654  
(559) 638-2226

## LAND SURVEYING

### Base Consulting Group Inc

1713 11th Street Suite #1  
Reedley, CA 93654  
(559) 637-1544  
info@basegrp.com

## LANDSCAPING SERVICES

### Celaya's and Sons Lawn Services

(559) 213-7365

### Midas Touch Lawn Service

(559) 859-5363  
midastouchlawn20@gmail.com

### SG Landscapes

7680 Navelencia Ave.  
Reedley, CA 93654  
(559) 618-0903  
office@sglandscapescompany.com

## MEDICAL SERVICES

### Adventist Health Care

372 W Cypress Ave.  
Reedley, CA 93654  
(559) 391-3030

## MEETING SPACE

### MCC Global Center

1012 G Street  
Reedley, CA 93654  
(559) 638-6911

## MORTGAGE COMPANIES

### Chicago Title Company

1140 F Street #103  
Reedley, CA 93654  
(559) 638-8348

### Cross Country Mortgage

1011 G Street  
Reedley, CA 93654  
(559) 307-5996  
denise.milton@ccm.com

## MASSAGE THERAPY

### A Touch of Holly

1650 11 th Street  
Reedley, CA 93654  
(559) 743-5021

## OFFICE SPACE

### Reedley Executive Center

1011 G Street  
Reedley, CA 93654  
(559) 726-2272  
www.reedleyexecutivecenter.com

## OPTOMETRIST

### Reedley Optometric

**Eyecare Center**  
1630 11th Street  
Reedley, CA 93654  
(559) 638-2249  
reedleyeyecare@gmail.com

## PARAMEDICS

### Sequoia Safety Council

500 E. 11th Street  
Reedley, CA 93654  
(559) 638-9995  
george@sscems.org

## PARTY AND DECORATION SUPPLY

### Franco's Decorations

1140 G Street  
Reedley CA 93654  
(559) 960-1568  
francodecorations@gmail.com

## PET SERVICES

### K-9 Action Dog Training

6154 S Frankwood Ave  
Reedley, CA 93654  
(559) 515-1167  
k9actiondogtraining@gmail.com

## PHOTOGRAPHY

### Blossom Trail Photo

809 I Street  
Reedley CA 93654  
(559) 637-4222  
blossomtrailphoto.com

## PEST CONTROL

### Bugs-911

(559) 393-1040

## PIZZERIA

### Papa Murphy & Pizza

803 E 11th Street  
Reedley, CA 93654  
(559) 638-4675

## PLUMBING

### Dave Knoll Plumbing

P.O. Box 996  
883 E. Dinuba Ave.  
Reedley, CA 93654  
(559) 638-3902  
daveknollplumbing@gmail.com

## POOL SERVICE

### Siloam Pool Care

1145 E. Dinuba Ave. Suite 101  
Reedley, CA 93654  
(559) 243-1010  
support@siloampoolcare.com

## PORTABLE TOILET SERVICE

### Patriot Hygienics LLC

2491 Alluvial Ave. Suite 644  
Clovis, CA 93611  
(559) 840-4700  
office@patriothygienics.com

## PRINTING SERVICES

### Marked Design N Apparel

1336 N. Steven Ave.  
Reedley, CA 93654  
(559) 818-4791

### Sequoia Print and Ship

587 I Street  
Reedley, CA 93654  
(559) 638-0188  
sequoia.print.ship@gmail.com

### Spirit In Print

1204 11th Street  
Reedley, CA 93654  
(559) 426-5152  
katelyn@spiritinprint.com

## PUBLIC UTILITIES

### PG & E

2445 Capital Street #210  
Fresno, CA 93721  
(559) 263-5310

### SoCal Gas

404 N. Tipton Ave.  
Visalia, CA 93772  
(909) 307-7070

## RANCH MANAGEMENT

### Cove Ranch Management

1315 E. Curtis Ave.  
Reedley, CA 93654  
(559) 638-7544  
elvial@coveranch.com

## REAL ESTATE

### Avodah Real Estate Group

42992 Road 52  
Reedley, CA 93654  
(559) 860-0818

### Gloria Banuelos (Realty Concepts)

1049 G Street  
Reedley, CA 93654  
(559) 930-8449  
gloriab@guarantee.com

### Isaac Realtor Team

1049 G Street  
Reedley, CA 93654  
(559) 637-0044

### Newton and Sons Real Estate

1025 G Street  
Reedley, CA 93654  
(559) 638-2500  
info@newtonandsons.com

### Realty Concepts Real Estate

1049 G Street  
Reedley, CA 93654  
(559) 638-4664  
reedley@guarantee.com

### San Joaquin Valley Homes

5607 Ave de Las Robles  
Visalia, CA 93291  
(559) 732-2660  
jsteele@sjvhomes.com

### Tracy Arakaki Realtor, EXP Realty

Reedley, CA 93654  
(559) 393-4913  
arakakirealty@gmail.com

### Valley Land Investments

1053 G Street  
Reedley, CA 93654  
(559) 638 3651  
roger@valleyland.com

## RELIGIOUS ORGANIZATIONS

### First Mennonite Church

1208 L Street  
P.O. Box 111  
Redley, CA 93654  
(559) 638-2917  
fmcreeley@gmail.com

### LIFeHouse Valley Church

1445 N. Frankwood Ave.  
Reedley, CA 93654  
(559) 638-2200  
ritalvc@gmail.com



# Chamber Business Directory

**Reedley Buddhist Church**

2035 15th Street  
Reedley, CA 93654  
(559) 905-3107  
justkliffo3@gmail.com

**Saint Anthony's Church**

1060 F Street  
Reedley, CA 93654  
(559) 638-2010  
stanthonychurch\_reedley@comcast.net

**RESIDENTIAL TREATMENT AND COMMUNITY OUTREACH****Central Valley Teen**

**Challenge**  
Reedley, CA 93654  
(559) 549-6628

**RESTAURANTS/FOOD VENDORS**

**Firehouse Mexican Food**  
(559) 824-3749

**Fosters Freeze**

1460 11th Street  
Reedley, CA 93654  
(559) 638-5150  
fostersfreezereedley@gmail.com

**Hectors Bar and Grill**

765 N. Columbia Ave.  
Reedley, CA 93654  
(559) 743-7360

**Mainstreet Café**

1052 G Street  
Reedley, CA 93654  
(559) 638-4082  
mainstreetcafereedley@yahoo.com

**Mariscos El Tarasco**

1474 E. Manning Ave.  
Reedley, CA 93654  
(559) 638-1452  
mariscoseltarasco@gmail.com

**McDonald's**

7043 W. Pershing Ave.  
Visalia, CA 93291  
(559) 738-8588  
officestaff@cmcdrg.com

**Ohana Pantry**

2885 E. Shepard Ave  
Clovis, CA 93619  
(559) 385-3658  
fresnoohanapantry@gmail.com

**Port of Subs 154**

1079 W. Manning Ave.  
Reedley, CA 93654  
(559) 643-0381

**Reedley Sandwich Shop**

1154 G Street  
Reedley, CA 93654  
(559) 643-0025  
reedleysandwichshop2@gmail.com

**Senor Beef**

630 Fresno Street  
Parlier, CA 93648  
(559) 393-3424  
senor.beef@yahoo.com

**The Tradewinds Pub**

1041 G Street  
Reedley, CA 93654  
(559) 743-7745  
tradewindspubreedley@gmail.com

**The Wakehouse**

850 N. Kings River Rd.  
Reedley, CA 93654  
(559) 637-9000  
wakehousereedley@gmail.com

**Twisted Indian Street Food #2**

1514 E. Manning Ave.  
Reedley, CA 93654  
(559) 743-7246  
twistedreedley@gmail.com

**Willies Café**

1201 G Street  
Reedley, CA 93654  
(559) 365-2615

**RETAIL STORES AND GIFTS****Gabriella's Bling Boutique**

1318 G Street  
Reedley, CA 93654  
(559) 356-2932  
gabriellapaparazzi@gmail.com

**ROOFING****Magallon's Roofing**

23205 Clayton Ave.  
Reedley, CA 93654  
(559) 638-6261  
info@magallonsroofing.com

**SECOND HAND STORES****Nearly New Shop**

1022 G Street  
Reedley, CA 93654  
(559) 638-4767  
nearlynewreedley@yahoo.com

**SOLAR SERVICES****Martin Energy Consulting Inc.**

917 G Street Suite 101  
Reedley, CA 93654  
(559) 730-1459  
vincent@martinenergyconsulting.com

**STORAGE FACILITY****Heritage Self Storage**

1885 E. Dinuba Ave  
Reedley, CA 93654  
(559) 638-4342  
manager@reedleyhss.com

**Lock and Leave Self Storage**

344 E. Dinuba Ave.  
Reedley, CA 93654  
(559) 638-3344  
reedley@ll-storage.com

**Master Storage 365**

1219 E. Dinuba Ave.  
Reedley, CA 93654  
(559) 743-1028  
MasterStorage365.com

**Store Storland Self Storage**

776 N. Haney Ave.  
Reedley, CA 93654  
(559) 638-2393  
356storlandstorage.com

**STORAGE SHEDS AND GARAGES****Tuff Shed**

30460 Commercial Rd.  
Visalia, CA 93292  
sfarias@tuffshed.com

**SENIOR LIVING****Palm Village Retirement Community**

703 W. Herbert Ave.  
Reedley, CA 93654  
(559) 638-6933

**Sierra View Homes**

1155 E Springfield Ave.  
Reedley, CA 93654  
(559) 638-9226  
rlinscheidsierraview.org

**TAX SERVICES****Contigo Services**

1752 11th Street  
Reedley, CA 93654  
(559) 391-1216  
contigoserv@gmail.com

**TILE SERVICES****Reedley Granite & Tile**

559-643-9442  
reedleygranitetile@gmail.com

**TIRE SERVICES****Lee's Service**

1445 I Street  
Reedley, CA 93654  
(559) 638-3535  
info@leesservice.com

**Les Schwab Tires**

379 I Street  
Reedley, CA 93654  
(559) 637-1585  
lstcreedley.568@lesschwab.com

**TRUCKING COMPANIES****Cabazon Transport LLC**

659 E. Dinuba Ave.  
Reedley, CA 93654

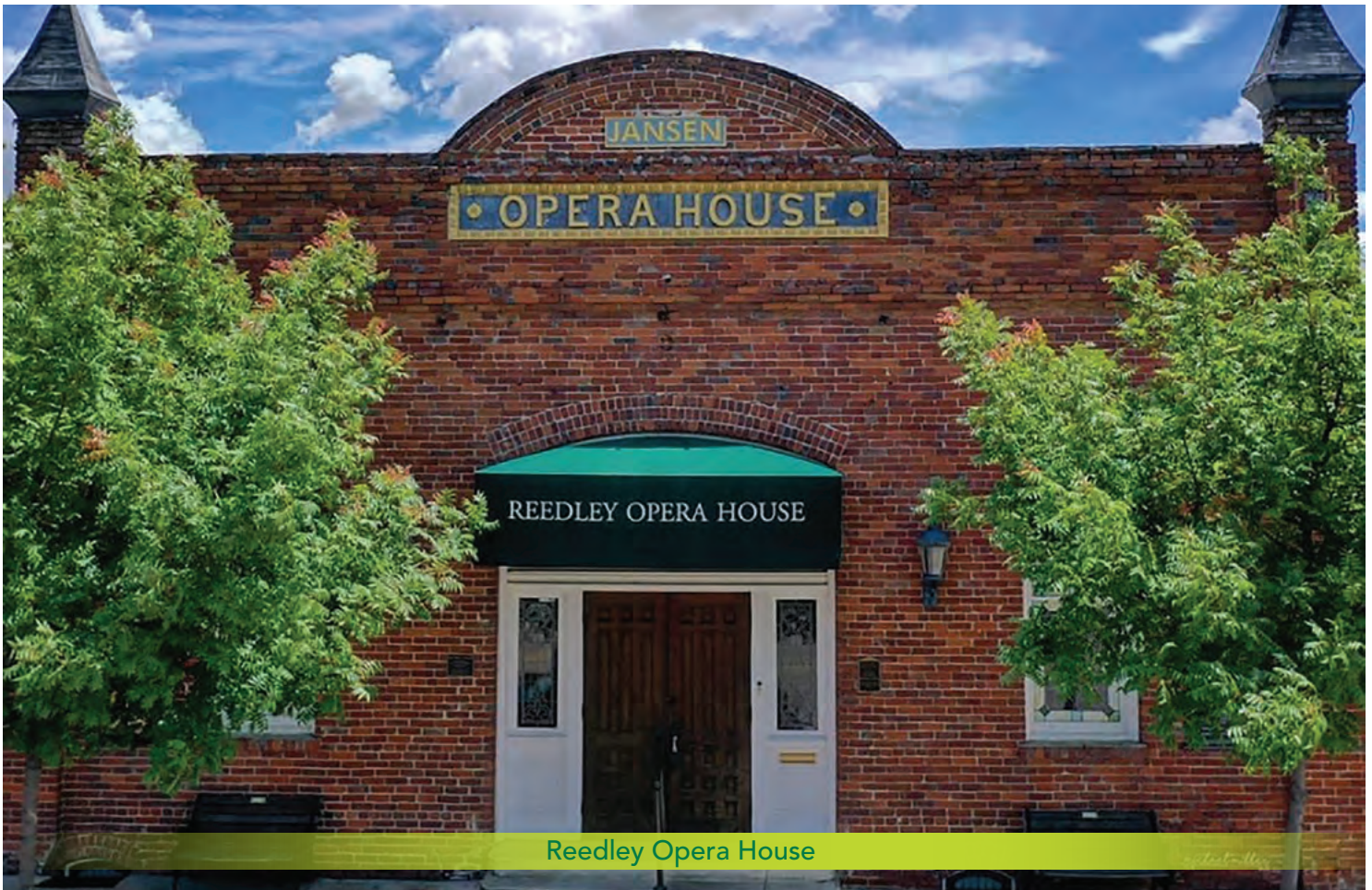
**WASTE MANAGEMENT****Mid Valley Disposal**

1535 Avenue 392  
Kingsburg, CA 93616  
(559) 237-9425

**Pena's Disposal Inc**

12094 Avenue 408  
Cutler, CA 93615  
(559) 528-3909  
tbi@penasdisposal.com





Reedley Opera House



## The Chamber is culture.

We are unwavering in our commitment to improving the health of the business community AND the community as a whole, and we see the two inextricably connected.

Help us build a vibrant, diverse community as a member of the Greater Reedley Chamber of Commerce. Join today!



**GREATER REEDLEY**  
CHAMBER OF COMMERCE

reedleychamber.com • 559.638.3548



# KCUSD

*Kings Canyon Unified*



**Where students  
are empowered  
to learn &  
succeed**



**Kings Canyon Unified School District**  
[www.kcUSD.com](http://www.kcUSD.com)  
559-305-7010







MID  
valley  
TIMES

**Subscribe for  
just \$4.99 a month.**

INCLUDES WEB SITE ACCESS  
AND HOME DELIVERY  
SERVICE OF PRINT EDITION

MID VALLEY TIMES  
1059 G STREET  
REEDLEY CA 93654  
559-638-2244

[midvalleytimes.com/subscribe](http://midvalleytimes.com/subscribe)

