

Discover

# Reedley



Community Guide & Business Directory



# JABER MOTORS

REEDLEY

**Top Quality Inventory for Pre-Owned  
Cars, Trucks & SUVs at Unbeatable Prices!**

**THE  
JABER  
EXPERIENCE**

LOW  
AS **1.99%** APR

**HASSLE FREE BUYING  
UNBEATABLE PRICING**

✓ LOW MILES ✓ CLEAN CARFAX ✓ OVER 150 UNITS AVAILABLE

**EXCLUSIVELY AT JABER MOTORS**  
WE'RE NOW OFFERING A LIMITED LIFETIME WARRANTY ON SELECTED VEHICLES

## DEAL OF A LIFETIME!



UNLIMITED  
TIME

**LIFETIME  
WARRANTY**

UNLIMITED  
MILES

COVERAGE FOR LIFE

**JABER  
MOTORS**



ENGINE



TRANSMISSION



TOWING

"YOUR FIRST & LAST STOP"

**JABER  
MOTORS**  
REEDLEY

**1646 G STREET • REEDLEY**

**559.743.7184**

Jabermotorsnow.com

**OPEN  
7 DAYS A WEEK  
9 a.m. - 9 p.m.**

009089

# CONTENTS

Welcome .....	5
Reedley Chamber.....	6-7
City Government .....	8
Points of Interest.....	12-14
Reedley History .....	16-17
Dining .....	18
Parks / Recreation.....	21
Education .....	23-26
Clubs / Organizations .....	29
Worship .....	31
Business Directory .....	34-37

Publisher: **MID-VALLEY PUBLISHING, INC.**  
1130 G Street, Reedley, CA 93654  
(559) 638-2244

Advertising: **JANIE LUCIO**

Graphic Design: **CLINTON ANTONIO**

Editor: **ERIK VALENCIA**, Reedley Chamber

Cover Photo: **MICHAEL MILLER**

Additional Photos: **DANNY JIMENEZ**

*Every effort has been made to ensure the accuracy of information in this publication. Mid Valley Publishing and the Greater Reedley Chamber of Commerce assume no responsibility for misinformation. Please contact the Chamber with any corrections at (559) 638-3548. Reproduction or reuse of any photos and/or written material contained within this magazine is prohibited without the expressed written consent of the Greater Reedley Chamber of Commerce.*

Published October 2022



**GREATER REEDLEY**  
**CHAMBER OF COMMERCE**







# REEDLEY

---

## Executive Center & Suites

We Are Driven By  
Our Values:

- ◆ *Community*
- ◆ *Professionalism*
- ◆ *Service*



**Reedley Executive Center** is a professional office center that offers executive suites, classroom, conference room, kitchenette, and in-house storage room.

Join the 1011 Network -REC is committed to **building, strengthening** and **sharing** community within our building.

*Our mission is to provide a beautiful, professional space to facilitate and equip the success of our tenants and the community.*

Enjoy an executive experience.  
*We invite you to try it.*

**CONTACT US TODAY!** [www.reedleyexecutivecenter.com](http://www.reedleyexecutivecenter.com) | email: [hello@reedleyexecutivecenter.com](mailto:hello@reedleyexecutivecenter.com)

**1011 G Street | Downtown Reedley | 559.726.2272**

009078



# WELCOME *to* REEDLEY!

**W**elcome to friendly Reedley, California. Named after wheat baron Thomas Law Reed, Reedley is known as "The World's Fruit Basket" because more fresh fruit is grown and shipped from here than any other place in the world. With the Kings River flowing through it, Reedley is a vibrant and sophisticated city and is a popular stop for both national and international tourists visiting Kings Canyon and Sequoia National Parks.

With a blend of quiet residential neighborhoods, bustling commerce, award-winning educational institutions, unique cultural events, active civic clubs, a plethora of religious organizations and exciting recreational opportunities, Reedley is a unique place to live, work, study, visit, and play. Whether you are a long-time resident, passing through, or considering a move to town, Reedley has something to offer everyone.

## COMMUNITY FACTS

- ◆ Reedley was named for T.L. Reed, a Civil War hero and 19th century farmer who settled here to provide wheat for Gold Rush miners. He built the town's first hotel, livery stable and blacksmith shop. He donated land for the area's first railroad station site and school; he helped build the first church, and lobbied to build a dam on the Kings River. A granite monument stands in his honor at Reed and Manning Avenues.
- ◆ Ethnic and religious diversity have been a source of great pride in this city for well over a century.
- ◆ The opening scene in the 1989 movie "Roadhouse," starring Patrick Swayze was filmed in Reedley.





# REEDLEY CHAMBER

## A Champion for Reedley!

Since 1914, the Greater Reedley Chamber of Commerce has worked to build up the Reedley Community.

Today, the Chamber continues to be a diverse business organization that is focused on impacting our community in a powerful way. We interact with the business community, local government, public safety, education, and the non-profits who are making a difference.



**GREATER REEDLEY**  
CHAMBER OF COMMERCE

### EXECUTIVE BOARD

**Neil Thonesen**  
Board Chair

**Matt Cochran**  
Board Vice-Chair

**Chuck Bohn**  
Treasurer

**Rene Nunez**  
Secretary

**Jose Plascencia**  
Previous Past Chair

### DIRECTORS AT LARGE

**Gloria Banuelos**

**Dr. Jerry Buckley**

**Bob Caulfield**

**Susan Chapman**

**Justin Clopton**

**Liset Garcia**

**Caitlin Gipson**

**Carrie Gutierrez**

**Rachel Uyeda**

"Our mission is to build a more vibrant and prosperous region by helping our members and community thrive through education, connectivity and promotion."

1044 G Street  
info@reedleychamber.com  
reedleychamber.com  
559-638-3548



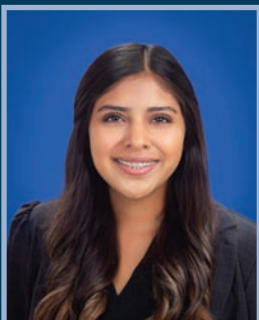




**Erik Valencia**  
President & CEO



**Wendy Ledezma**  
Executive Assistant



**Emily Medina-Delgado**  
Events & Marketing



**Veronica Lopez**  
Office Manager

**NETWORK with us at a Chamber event!** With events occurring year-round the Chamber is an outstanding way to get to know people in the business community, as potential customers, partners and friends! Join us at Good Morning Reedley, the Chamber Business & Community Awards Gala, or one of the many other events created to connect you with other business professionals in our community.

**CONNECT with the Reedley Chamber!** Sign up to receive our e-news, follow us on Twitter or like us on Facebook and Instagram to view daily updates on Reedley Business and Community News.

**Utilize a Chamber RESOURCE to grow your business!** The Chamber offers many programs designed to provide value to our members. Acquire an important business skill at one of our Business Development Workshops or take advantage of other support programs available through our partners.

**Increase your VISIBILITY in the community!** Host an event, ribbon cutting ceremony, or sponsor one of our many monthly or annual events.

**Learn how the Chamber ADVOCATES for your business!** The Chamber works to inform you of local, statewide, and national issues affecting the business climate in our community. Attend our monthly Steering Committee Meeting, quarterly Government Affairs Committee Meetings or attend one of our mixers to directly connect with elected officials in our area.

**HAVE FUN!** While the Chamber has serious benefits, we help you enjoy yourself while you work. Getting to know your community through our business, educational and social events, you'll remember that the rewards of business can be personal as well as professional.







**Nicole R. Zieba,**  
*Reedley City Manager*  
 1717 9th Street, Reedley  
 (559)637-4200 ext. 212  
[nicole.zieba@reedley.ca.gov](mailto:nicole.zieba@reedley.ca.gov)

**Matthew Tuttle,** *Council Member*  
 Council District 1  
 Term: 12/2020-12/2024  
[MTuttle@reedley.ca.gov](mailto:MTuttle@reedley.ca.gov)

**Mary Fast,** *Mayor*  
 Council District 2  
 Term: 12/2018-12/2022  
[MFast@reedley.ca.gov](mailto:MFast@reedley.ca.gov)

**Ray Soleno,** *Council Member*  
 Council District 4  
 Term: 12/2018-12/2022  
[RSoleno@reedley.ca.gov](mailto:RSoleno@reedley.ca.gov)

**Anita Betancourt,** *Council Member*  
 Council District 5  
 Term: 12/2020-12/2024  
[gilbertanita70@aol.com](mailto:gilbertanita70@aol.com)

**Ruthie Greenwood,** *City Clerk*  
 (559) 637-4200 ext. 212  
[ruthie.greenwood@reedley.com](mailto:ruthie.greenwood@reedley.com)

# CITY GOVERNMENT



## Reedley Mayor and City Council

The City Council regularly meets on the second and fourth Tuesday of each month at 7:00p.m. at the Reedley City Council Chambers located at 845 "G" Street, Reedley.

Correspondence for elected officials can be emailed to [ruthie.greenwood@reedley.ca.gov](mailto:ruthie.greenwood@reedley.ca.gov) or mailed to 1717 9th Street, Reedley CA 93654

City of Reedley | Population 26,087  
 Elevation 348 ft. | (559) 637-4200 | [Reedley.com](http://Reedley.com)

## Reedley Police Department

843 G St, Reedley | (559) 637-4250 Emergency: 911



**Chief Joe Garza**

The Reedley Police Department, in partnership with the community, strives to provide the highest quality of comprehensive professional law enforcement services to the citizens of Reedley. The Police Department is committed to preserving the exceptional quality of life that our citizens enjoy and keeping Reedley one of the safest communities in California.

## Reedley Fire Department

1060 D St, Reedley | (559) 637-4230 Emergency: 911



**Chief Jerry Isaak**

The Reedley Fire Department has been proudly serving the community since 1881. The Department prides itself in maintaining fast and efficient emergency services. The highly dedicated team of 45 men and women serving the community manage more than 1,200 calls per year.





# SEQUOIA

## PRINT & SHIP

**WE CAN HANDLE ALL YOUR PRINTING NEEDS!**

**WE ALSO SHIP WITH**






### 2 MONTHS FREE

**WITH ONE YEAR MAILBOX RENTAL**

**587 I St Reedley, CA 93654**  
**(559) 638-0188**  
**www.SequoiaPrintShip.com**



690600

# REEDLEY INSURANCE

## AGENCY



*Daniel Samarin, Josie Gonzalez, Christina Rojas and Mike Franks*  
*Missing from photo: Julie Juarez*

*Complete Insurance Service*

PERSONAL INSURANCE
Home   Auto   Recreation Vehicles   Umbrella

COMMERCIAL INSURANCE
Liability   Auto   Workers Comp   Bonds
Umbrella   Life Insurance   Health Insurance

*Se Habla Español* (559) **638-2226**  
**1146 G St.**  
**Downtown Reedley**  
 FAX (559) **638-0036**  
 mfranks@reedleyinsurance.com  
 Lic. #0730820



009083

# DOPKINS FUNERAL CHAPEL

2200 S. Reed Ave.  
 Across the street from Reedley Cemetery.

**559.638.7000**

*Serving our communities for 128 years.*



FD-2175

009072





**United Health Centers**  
of the San Joaquin Valley

# MEDICAL SERVICES

**Find the Medical care  
you need under one roof.**

- Medical
- Dental
- Optometry
- Women's Health

- Behavioral Health
- Chiropractic
- OB-GYN
- Podiatry

- X-Ray
- Enrollment Services
- Laboratory
- Transportation

We accept most insurances, as well as; Medi-Cal, Medicare, Private pay, Tricare and provide Sliding Fee Discounts.

## Reedley Health Center

1790 E. Manning Ave., Reedley, CA 93654

Monday: 8:30 am - 8:00 pm

Tuesday - Friday: 8:30 am - 5:30 pm

Saturday & Sunday: Closed



**1790**

**800.492.4227**

| [unitedhealthcenters.org](http://unitedhealthcenters.org) |



009058





**Uncle Harry's**  
CLASSIC MEALS  
Restaurant  
& Catering

(559) 638-5170

1201 G St.  
Reedley, CA 93654

005632

*Lupe Alvarez*  
**Realtor**  
Hablo Español

DIRECT: 559.318.0058  
lalvarez@guarantee.com  
vivianls.com

CalBRE# 01506148




005696





**CAROL ISAAC**  
Broker Associate  
559.779.0762  
CAROLISAAC@GUARANTEE.COM  
DRE#00859783

**JENNIFER HIXSON**  
Realtor  
559.859.6909  
JHIXON@GUARANTEE.COM  
DRE#01969968

COMMERCIAL & RESIDENTIAL SALES

**G | GUARANTEE**  
REAL ESTATE  
A Berkshire Hathaway Affiliate

1049 G STREET • REEDLEY

009057

**20th**  
Anniversary  
Season

REEDLEY'S  
**RIVER CITY**  
THEATRE COMPANY



**MURDER**  
at the  
OPERA HOUSE

SEPTEMBER 29-OCTOBER 15, 2023



**ARSENIC AND**  
**OLD LACE**

SEPTEMBER 16-OCTOBER 2, 2022



**STEEL**  
**MAGNOLIAS**

FEBRUARY 24-MARCH 12, 2023



Roald Dahl's  
**Matilda**  
THE MUSICAL

DECEMBER 2-17, 2023



**Christmas**  
**LEGENDS**

DECEMBER 3-18 2022



**SHREK**  
THE MUSICAL

JUNE 30-JULY 16, 2023

**RCTCREEDLEY.COM**  
**559-638-6500**

009316



# POINTS OF INTEREST

Nestled just below the Sierra Nevada foothills, Reedley provides a gateway into the incredible beauty of the mountainous landscape of the Eastern skyline. Reedley's location allows residents an active recreational lifestyle of a vast array of interests enhanced by proximity and the accompanied climate that allows for many year-round outdoor activities.



## THE KINGS RIVER & REEDLEY BEACH

Reedley sits along the banks of the Kings River, and its inland beach attracts swimmers, fishers, boaters, and water-skiing enthusiasts. Riverside parks delight families and friends looking for a place to park their picnics basket. Enjoy a float on the Kings River. Try the stretch from Goodfellow Bridge to the Wakehouse camping area, or for a longer ride, continue to Reedley Beach.



## DOWNTOWN REEDLEY

This lovely historic area includes specialty shops, restaurants, a museum and the painstakingly restored 1903 Reedley Opera House. Downtown plays host to community events throughout the year, from the Reedley Street Faire to Reedley Fiesta, and the Electrical Farm Equipment Parade. Many shops and restaurants have been around for decades, including the Pub, Uncle Harry's, Valentino's and Main Street Café.



## REEDLEY MUNICIPAL AIRPORT 4557 Frankwood Avenue (559) 637-9453

The Reedley Municipal Airport is located four miles north of Reedley City Limits. The Federal Aviation Administration (FAA) estimates that the Reedley Airport averages approximately 1,375 departures per month. There are currently 55 aircrafts based there. A park that can be used for picnics, parties, etc. is located on the site.



## REEDLEY WATER TOWERS

Clean, pure water was hard to keep in Reedley until the twin water towers were built. The first of these tanks was built in 1914 at a cost of \$4,950. The second was built in 1923 at a cost of \$6,599. Each tank has the capacity to contain 60,000 gallons of water. The towers underwent a major rehabilitation project during the summer of 2022.



## OLD SETH

This beautiful town clock is in the 1100 block of G Street and was crafted by Hie Seth Thomas Clock Company. M.A. Furlong, a jeweler in town ordered the clock in 1920, and it arrived in Reedley in 1921. The cost was \$1,000 plus freight. The clock underwent restoration in 2009.





## **REEDLEY HISTORICAL MUSEUM 1752**

**10th Street (559) 638-1913**

Situated in a 100-year-old building that was Reedley's first City Hall, Reedley Historical Society and Museum celebrates the town's rich history. Its offering includes Native American artifacts, antiques, farm equipment and other exhibits that honor the area's diversity. Admission is just a dollar for adults and 50 cents for kids, and it's open Tuesday and Saturday mornings from 9 a.m. to 12 p.m.



## **REEDLEY OPERA HOUSE/REEDLEY RIVER CITY THEATRE CO.**

**1720 10th Street (559) 638-6500**

Built in 1903, the Opera House was the forerunner of today's multipurpose community center. Its heyday ended in the early 1920s with the introduction and popularity of movie houses. In 1983, The Opera House was remodeled and in 1986 it was listed on the National Register of Historic Places. Today, the Opera House is home to Reedley's River City Theatre Company.



## **MENNONITE QUILT CENTER**

**1012 G Street (559) 638-3560**

Mennonite Central Committee (MCC), a worldwide ministry of Anabaptist churches, shares God's love and compassion for all in the name of Christ by responding to basic human needs and working for peace and justice. Services they provide include Global Relief Kits, Quilting, Sewing, Visual Arts, Immigration Services, and Young Adults Programs. The relief center is home to a Quilting Museum, where many different quilts are on display. It is open Tuesday and Thursday to the public.



## **KOREAN HERITAGE PAVILLION**

**196 N. Reed Avenue**

The pavilion consists of a replica of the Korean Independence Gate (Dongnimmun) in Seoul, Korea, and 10 monuments honoring prominent Central California individuals who made important contributions to the Korean community.



## **HILLCREST TREE FARM & RAILROAD**

**6943 S. Reed Avenue (559) 638-2762**

Enjoy a tour of the farm on an exquisite half scale live steam narrow gauge railroad. Also enjoy children's play areas, trails & picnic areas. Open seasonally, with the train running on the weekends from 10 a.m. to 5 p.m.



## **HOBB'S GROVE**

**14265 E. Goodfellow Ave. (559) 356-3958**

Halloween at Hobb's Grove is exactly what one would hope for when desiring the ultimate haunted Halloween experience. The Midway at Hobb's Grove has an old-time feel and features warming fire pits, peddlers and entertainment. The Grove's ticketed attractions include The Haunted Forest, The Haunted Hayride, The Haunted House, and The Portal.





**WAKEHOUSE**  
**850 Kings River Road (559) 637-9000**

The Wakehouse is a riverside venue, eatery, and cocktail lounge along the Kings River. Take a break here for dinner, entertainment, drinks, camping, or the full experience. This property has been a staple for river fun, camping and drinking for 30 plus years. Since building an attached concert venue they have hosted 10 national touring artists and several more fantastic local acts.



**SWEET GIRL FARMS**  
**8358 S. Alta Ave (323) 314-1967**

There's nothing more exciting than finding locally grown farm fresh produce. Sweet Girl Farms is the most authentic Farm Stand in the Reedley area — offering residents and visitors a variety of products ranging from fresh fruit, jams, nuts, dried fruit, fresh vegetables, and specialty fresh cut flowers.



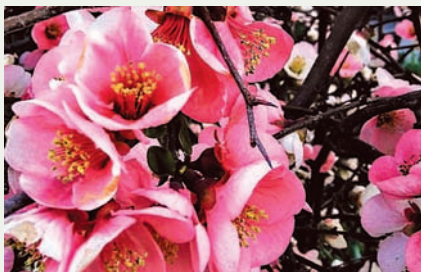
**CEDAR VIEW WINERY**  
**1384 S. Frankwood Ave. (559) 787-9412**

Since 1999, Cedar View Winery has focused on crafting rare and eclectic wine varietals. Traditional and hand-crafted methods are used to produce the wines. This is a place where you can enjoy wine and the art of winemaking. Wine Tasting: Saturday & Sunday, Noon - 5 p.m.



**WONDER VALLEY RANCH RESORT & CONFERENCE CENTER**  
**6450 Elwood Road (559) 787-2556 [wondervalley.com](http://wondervalley.com)**

Set on a 75-acre site with a lake, this ranch-style resort and conference center is set in the foothills of the Sierra Nevada Mountains and is 8 miles from Avocado Lake Park. You'll find no better place in California; or even the entire Western United States, at providing a more comprehensive and impressive list of facilities and activities for all types of functions.



**BLOSSOM TRAIL**  
**[goblossomtrail.com](http://goblossomtrail.com)**


Reedley is located along the southern part of the renowned Fresno County Blossom Trail. The Blossom Trail is a 62-mile self-guided motor or bicycle tour through the blossoming orchards of Fresno County. The Blossom Trail runs the middle of February through early March.




**FRUIT TRAIL**  
**[gofruittrail.com](http://gofruittrail.com) (559) 600-4271**

This self-guided tour through California's agricultural heartland was created through a partnership between the elected and civic leaders and the farmers in Eastern Fresno County. The Fruit Trail celebrates the beauty, flavor, and culture of this region. Enjoy orchards full of ripe fruit from the leading agricultural county in the world






**REEDLEY LUMBER & BUILDING CENTER**




PLUMBING  
ELECTRICAL  
PAINT  
HARDWARE  
LUMBER


p. 559.638.2512 • f. 559.638.7278 1547 G. St., Reedley, CA 93654

005665



**"A BEAUTIFUL VIEW STARTS WITH A BEAUTIFUL WINDOW"**



ANDERSEN WINDOWS AND DOORS  
Andersen 

SALES AND SERVICE  
**559.637.0612**  
937 E. DINUBA AVE. □ REEDLEY, CA 93654

005694



***The City of Reedley***

Connect with your community at  
***www.reedley.com***

005583





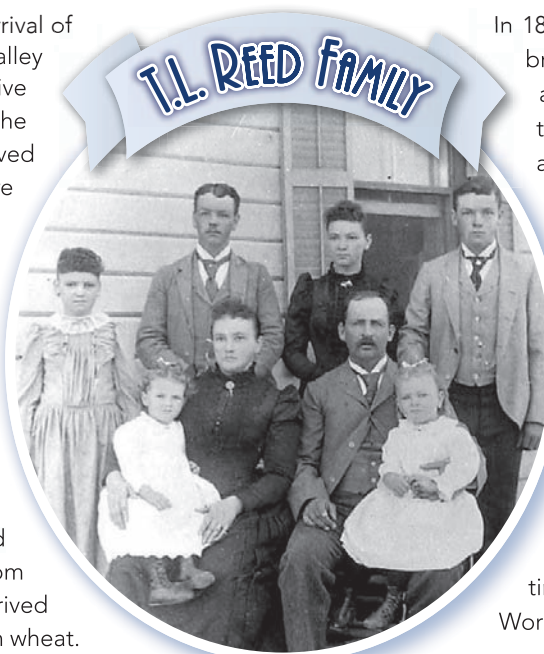
# REEDLEY HISTORY

For hundreds of years before the arrival of white settlers, the San Joaquin Valley was home to a group of Native Americans known as the Yokuts. The Yokuts were a peaceful group, who lived along the Kings River in villages where they hunted, fished, and gathered their food.

The first white settlement, in the area that we now call Reedley, was established by the James Smith family in 1855. The Smiths operated a ferry service and hotel on the east bank of the Kings River, near today's Olson Avenue Bridge, until 1874.

In 1884, ten years after the ferry and hotel closed, a Civil War veteran from Ohio named Thomas Law Reed, arrived with his family from Yolo County to farm wheat.

Reed was encouraged to move to the Reedley area by the 76 Land and Water Company. He was impressed by the possibilities of irrigation and purchased land from the company. Soon he was farming 12,000 acres between the King's River and Smith Mountain.



In 1888, the Southern Pacific Railroad built a branch line through the area. Reed deeded a half-interest in a 360-acre town site to the railroad and in return they established a depot. The railroad named the new town "Reedley" in honor of Reed.

The rich land surrounding Reedley was dry a good part of the year, but the river made irrigation possible. Canals were built and during the 1890s wheat growing began to fade. Farmers turned to the more profitable work of growing grapes and tree fruit. The attraction was immediate, and settlers arrived from all parts of the world. Vineyards and orchards flourished. In time, Reedley became known as, "The World's Fruit Basket."

In 1913, twenty-five years after the town's founding, Reedley was incorporated. Today, Reedley is Fresno County's fourth largest city with a population of 26,087 – all because of the vision and hard work of early day pioneers, and of the many who followed.







# DINING GUIDE



## AMERICAN

**Carl's Jr.**  
810 N. Reed Ave

**The Drunk Donkey**  
1041 G Street

**Foster's Freeze**  
1460 11th Street

**Jack in the Box**  
605 N. I street

**KFC**  
864 W. Manning Avenue

**Mainstreet Cafe**  
1052 G Street

**McDonald's**  
835 N. Reed Avenue

**Port of Subs**  
1079 W. Manning Avenue

**Reedley Sandwich Shop**  
1154 G Street

**Subway**  
567 I Street

**Subway**  
1343 E. Manning Avenue

**Super Burger Drive-In**  
1295 E. Manning Avenue

**Tomanni Bistro**  
1119 G Street

**Willie's Cafe**  
1663 11th Street

**The Wakehouse**  
850 N. Kings River Road



## ASIAN

**China Garden Express**  
773 N. Reed Avenue

**Sansei Japanese Restaurant**  
1135 E. Manning Avenue

**Sun China Chinese Restaurant**  
1526 E. Manning Avenue

**Yoi Japanese Restaurant**  
781 N. Reed Avenue



## ITALIAN/PIZZA

**Little Caesars Pizza**  
924 E. Manning Avenue

**Me-N-Ed's Pizza Parlor**  
1085 E. Manning Avenue

**Papa Murphy's Take 'N' Bake Pizza**  
803 E. 11th Street

**The Pirate's Den**  
1550 E. Manning Avenue

**Valentino's Pizzeria Italian Restaurant**  
1043 G Street

**YR Pizza Planet**  
921 W. Manning Avenue



## MEXICAN

**Costa Dorada**  
1061 E. Manning Avenue

**Camaron Pelado**  
801 N. Reed Avenue

**The Drunk Donkey**  
1041 G Street

**El Monte**  
1726 12th Street

**El Mundo De Sabores**  
1360 Manning Avenue

**Juanito's Mexican Restaurant**  
819 W. Manning

**La Espiga**  
1649 10th Street

**Mariscos El Tarasco**  
1474 E. Manning

**Ortega's Taqueria**  
1401 I Street

**Taco Bell**  
1686 E. Manning Avenue



## DESSERT/BAKERY

**Baskin Robbins**  
585 I Street

**El Mundo De Sabores**  
1360 Manning Avenue

**El Nopal Bakery**  
1360 G Street

**The Honey Pearl Cafe**  
593 I Street

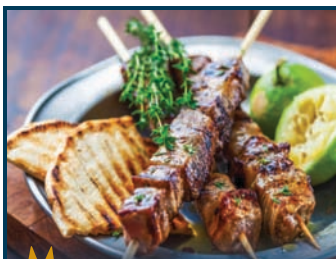
**Jamba Juice**  
765 N. Reed Avenue

**La Espiga Bakery**  
1649 10th Street

**Munchies**  
785 N. Reed

**Pasteleria Plaza Bakery**  
1617 11th Street

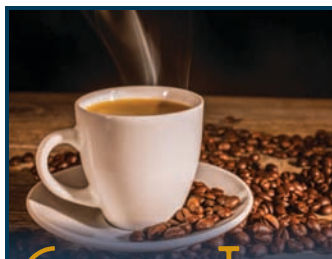
**Tomanni Bistro**  
1119 G Street



## MEDITERRANEAN

**Kabab City**  
945 W. Manning Avenue

**Uncle Harry's Classic Meals**  
1201 G Street



## COFFEE/TEA

**The Honey Pearl Cafe**  
593 I Street

**Starbucks**  
1081 W. Manning

**Sweet Destination**  
1115 G Street



## BAR

**The Drunk Donkey**  
1041 G Street

**Legacy Bar & Lounge**  
1333 I Street

**El Viejon Bar**  
1261 G Street

**The Wakehouse**  
850 N. Kings River Road



**Shopping for a Gift?**  
We offer:  
**Unique Gifts & Home Decor**



• Gifts • Home Decor •  
Women's Clothing and more!


**~ Gift Certificates ~**

Open: Mon.- Fri.: 10 a.m. - 5 p.m.  
Sat.: 10 a.m. - 4 p.m.

**559.638.2635**  
1032-34 G Street • Reedley

009044


**St. La Salle School**



404 E. Manning Ave. Reedley, Ca. 93654  
(559) 638-2621  
www.stlasallereedley.com

**Five reasons to choose a Catholic School**

1. We offer an education that combines Catholic faith and teachings with academic excellence.
2. We partner with parents in the faith formation of their children.
3. We set high standards for student achievement and help them succeed.
4. We provide a balanced academic curriculum that integrates faith, culture and life.
5. We use technology effectively to enhance education.



Catholic Schools  
Learn. Serve. Lead. Succeed.

009076

**MONTAYA MOBILE NOTARY**



**Notary Public**  
**Loan Signing Agent**

**Doreen J. Montoya**

**SERVICES**

- Loan Documents • Titles • Wills
- Living Trusts & Powers of Attorney
- Bill of Sale • Affidavits

**Call or Text**  
**559-725-1885**

doreen@montoyamobilenotary.com  
1715 11th Street • Downtown Reedley

009049

**Allstate**  
AUTO - HOME - LIFE - BUSINESS



✓ No Broker Fees  
✓ Competitive Rates  
✓ Superior Customer Service

**Jose Plascencia**  
Agency

**Community Leader**  
**Community Volunteer**

- Board Member: Boys and Girls Club of Fresno County
- Board Member Emeritus: Valley PBS
- Chairman: California Hispanic Chambers of Commerce Foundation
- Board Member: California State Department of Insurance Task Force
- Past Chairman: Reedley Chamber of Commerce
- Past Chairman: United Health Centers Foundation of the San Joaquin Valley
- Past Chairman: Valley PBS
- Past President: Central California Hispanic Chamber of Commerce

**Allstate**  
You're in good hands.

1318 E. Manning Ave. • Reedley, CA 93654 • **559-638-8930**  
LIC #OD14415 • jose.plascencia@allstate.com

009042





**"SERVING REEDLEY FOR 17 YEARS"**

- **Cardio, Weight and Functional Training Equipment**
- **ALL Group Xercise Included**
- **Free Fitness Assessment and Orientation**
- **Saunas**
- **Free Lockers**
- **Individual & Small Group Personal Training Available**
- **Tanning Booth and Basketball Courts**



**XCELERATE**  
FITNESS

● ● ● find your pace

**REEDLEY 638-2300**

000064

## Financing provided by



### Denise Milton

Originating Branch Manager  
NMLS363377  
M: 559-307-5996  
denise.milton@myccmortgage.com  
reedleyccm.com  
1011 G. Street, Suite #9  
Reedley, CA 93654  
NMLS3029 NMLS1950138

## Free pre-approval



Equal Housing Opportunity. All loans subject to underwriting approval. Certain restrictions apply. Call for details. All borrowers must meet minimum credit score, loan-to-value, debt-to-income, and other requirements to qualify for any mortgage program. CrossCountry Mortgage, LLC NMLS3029 (www.nmlsconsumeraccess.org).

009047

**PENA'S**  
DISPOSAL SERVICE  
LEADING THE WAY TO ZERO WASTE!



Family owned since 1949  
**3 GENERATIONS STRONG!**

**We provide  
Mobile Shredding,  
Recycling, and Waste  
Disposal services in Fresno  
and Tulare Counties!**



**(559) 528-3909  
PENASDISPOSAL.COM**

009050



# PARKS & RECREATION



**K**ey to Reedley is its exceptional recreational amenities. The City of Reedley Community Services Department and the Reedley Branch Library offer a variety of programs year-round that help enhance the quality of life for Reedley residents.



**Camacho Park**  
950 E. North Avenue

**Citizen's Park**  
1685 N. Thompson Avenue

**Cricket Hollow Park**  
1125 W. Olsen Ave.

**Luke Trimble Splash Park**  
196 N. Reed Avenue

**Mueller Park/Skate & Dog Park**  
100 N. East Avenue

**Pioneer Park**  
844 G Street

**Reedley Beach**  
1120 W. Olsen Avenue

**Reedley Branch Library**  
1027 E Street  
(559) 638-2818

**Reedley Community Center**  
100 N. East Avenue  
(559) 638-4203

**Reedley High School Aquatics Complex**  
477 Manning Avenue  
(559) 637-4203

**Reedley Municipal Airport**  
4557 S. Frankwood Avenue  
(559) 637-9453

**Reedley Sports Park**  
20349 E. Dinuba Avenue

**Smith Ferry Park**  
1449 S. Reed Avenue



#100406684/#COA261



## LET'S DO LIFE TOGETHER!

**"I am SO glad that I was at Sierra View Homes during the pandemic!**

So many of my friends were home alone and didn't see a single person all day! I would have been so lonely. Instead, we pulled together as a community, to support each other and check on each other. The pandemic showed me that my senior apartment at Sierra View is the best of both worlds. I have friendship, community, and senior resources, combined with freedom and independence. Moving to Sierra View Homes was the best choice I've ever made."

**JOANN KALAFUT, resident**

**sierraview.org**  
**(559) 638-9226**

- **Independent Living**
- **Assisted Living**
- **Memory Care**
- **Skilled Nursing**
- **Rehabilitation**



007809

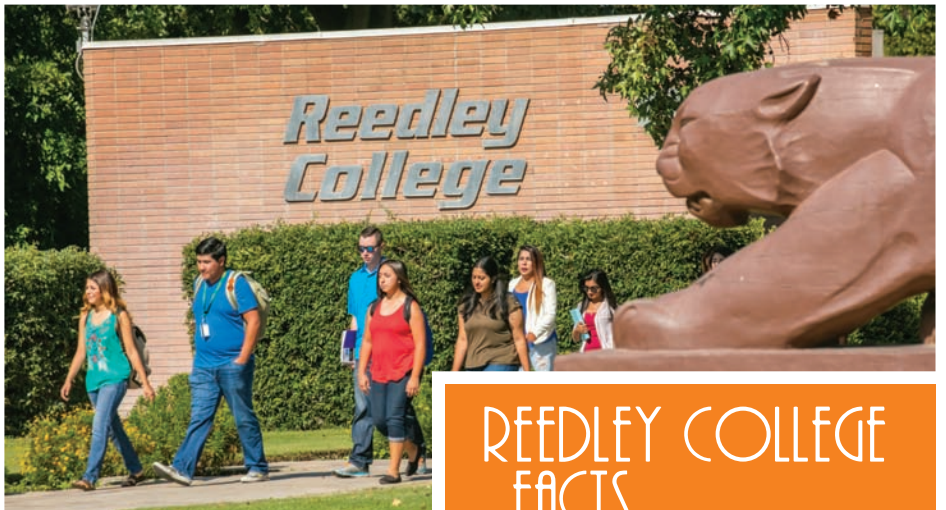


# EDUCATION

Reedley's community believes education is very important and is proud to be the home of Reedley College, Kings Canyon Unified School District, Immanuel Schools, and St. La Salle.

## REEDLEY COLLEGE (Community College)

Since 1926, Reedley College has strived to motivate and inspire students to succeed. Whether it be on their award winning 300-acre farm, helping manage 800 acres of forest at Sequoia Lake, up in the air with their Flight Science program, or competing at a high level in athletics, Reedley College always strives to set a standard of campus-wide excellence. Reedley College offers an array of free student services, including financial aid, tutoring, academic advising and career and transfer counseling. Reedley College's programs are sought out by students all over the nation, with accredited programs in Forestry, Aviation Mechanics, ASE Certification, Dental Hygienist, and high-tech CAD instruction. These programs are recognized for excellence in curriculum and technology. Additionally, the twelve competitive sports on campus carries its own diverse cultures, and the Tigers reigning spirit is a constant source of contagious enthusiasm. The Reedley College family is always proud to be part of this amazing community.

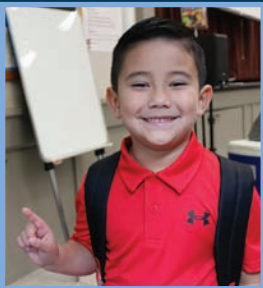
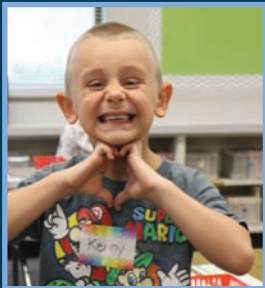


## REEDLEY COLLEGE FACTS

- Reedley College, located at the entrance of the city, is a robust community college that includes a 300 acre farm, associate degree program, career training programs and much more.
- Reedley College has an enrollment of nearly 8-thousand students.
- Reedley College is where Josh Allen began his college football career and is now one of the top quarterbacks in the National Football League with the Buffalo Bills.







## KCUSD FACTS

**School sites:** 22

Preschools: 10

K-5: 8

K-8: 4

6-8: 3

9-12: 4

Educational Option Schools: 3

**Student Enrollment:** 9,725

**Staff members:** 1,200+

### College and Career Ready:

- RHS: 13 Advanced Placement classes, 15 career pathways, 19 CTE/VROP dual enrollment classes, 2 general education dual enrollment classes
- RMCHS: students concurrently earn high school and college credit

### U.S. News & World Report 2022

#### Best High Schools:

#5 Reedley High School\*

#7 Orange Cove High School\*

\*Ranked among 68 Fresno Metro Area Traditional High Schools



## KINGS CANYON UNIFIED SCHOOL DISTRICT (Public K-12)

Even through the challenges of the past few years, KCUSD students have scored higher in English Language Arts and math than students at neighboring school districts on the California Smarter Balance Assessment. According to U.S. News & World Report, KCUSD high schools are ranked among the top 10 in the area. Reedley High School ranked #5 with Orange Cove High school coming in at #7. RHS and OCHS are ranked among high schools such as Clovis North H.S., Clovis West H.S. and Kingsburg H.S.





## IMMANUEL SCHOOLS (Private K-12)

Immanuel Schools' mission is to equip students to serve God and neighbor with mind, body, and soul, based on a Christ-centered foundation. The student population comes from all over the Central Valley, with 5 bus routes to help transport families in Visalia, Tulare, Hanford, Fresno, Clovis and the surrounding communities.



## IMMANUEL SCHOOLS FACTS

ENROLLMENT **937**

Elementary (K-6) **479**

Junior High (7-8) **185**

High School (9-12) **273**

CENTRAL VALLEY DIVERSITY  
**25 CITIES / 4 COUNTIES**

BIBLICAL FOUNDATION:  
**100%** of K-12 students K-12 attend Bible classes and Chapel

COLLEGE PREP THAT WORKS:  
**95%** of Immanuel graduates are college bound

AVERAGE CLASS SIZE: **20-24**

**46** CHORAL AWARDS:  
**9** International / **37** National – **40%** of students participate in choir/drama

**1:1:** Chromebooks for grades 7th-12th, and

**1:1:** Chromebooks accessible for 2nd-6th

**11:1:** Chromebooks for 1st

**10:1:** iPads for kinder

**80%** of Immanuel High School students play sports

**70:** Team Section Championships

**49:** Relay Team / Individual Section Championships

**3:** State Championships





## ST. LA SALLE SCHOOL (Private K-8)

St. La Salle, a Catholic school founded by the Christian Brothers, provides a Christ-centered education in which children may grow in relationship with and respect for God, self, others, and the environment.

The school fosters a student-centered educational environment. They believe education means teaching the whole person. Each student is led to develop spiritually, morally, socially, emotionally, intellectually, and physically in a spirit of faith, hope and love.

Students are called to be active member in building a community of faith through participation in prayer, liturgies, sacraments, daily catechesis, and service.



## ST. LA SALLE FACTS

St. La Salle School believes that community is the heart of Christian education, not simply as a concept to be taught but as reality to be lived. The religious education of the children is not perceived as the responsibility of the school solely, but of the faith community at large.



*Gloria V. Banuelos*

DRE# 01135306

**Realtor**

*Hablo Español*

DIRECT: 559.930.8449  
gloriab@guarantee.com  
TeamVivianRealEstate.com



005697



**Donna J. Cole**

Insurance Services

"As your agent, I am with you every step of the way"

Health / Medicare Plans / Life  
Group / Individual Insurance

Phone 559.638.1340 Fax 559.638.3870  
Cell 559.360.4685 Toll Free 888.638.1340

CA Lic. #0C28632

1158 G Street, Ste. 100 Reedley, CA 93654

Email: dcoinsurance@verizon.net

www.donnajcoleinsurance.com



007492



**MID VALLEY  
DISPOSAL**

- COMMERCIAL SERVICES
- RESIDENTIAL SERVICES
- ROLL-OFF CONTAINERS
- COMPOST FOR SALE
- DROP OFF LOCATIONS
- BULKY ITEM PICK-UP
- RENT-A-BIN CONTAINERS

MIDVALLEYDISPOSAL.COM | (559) 897-5217

**FOR ALL OF YOUR SOLID  
WASTE & RECYCLING NEEDS**



009067



**REEDLEY  
OPTOMETRIC**

EYECARE CENTER

MEMBER *VISION SOURCE* NETWORK



Dr. Bryan Eidal, OD

- We have a wide variety of Designer Frames
- Professional Personalized Service
- Contact Lenses
- State-Of-The Art Diagnostic Equipment

**NEW PATIENTS WELCOME - LATEST INSTRUMENTS**  
**FRIENDLY STAFF - 56 YEARS EXPERIENCE**

Member of  
*VISION SOURCE*  
**SIGNATURE  
EYE CARE**

Hours: Monday-Friday: 8 a.m. - 5 p.m. • *Se Habla Español*  
1630 11th Street • Reedley • 559.638-2246 • [www.reedleyeyecare.com](http://www.reedleyeyecare.com)

005664



# Lee's Service

## Reedley • Fresno

### SINCE 1949



1445 I Street • Reedley



5774 S. Toyota Place • Fresno

**Tires • Retreading • Auto Service**

**Auto Service • Commercial • Ag  
Tires & Wheels • Retreading  
Passenger • Light Trucks**

**WE CARRY ALL THE FINEST BRANDS OF TIRES**

**BRIDGESTONE**



**MICHELIN**

**GOODYEAR**

**Firestone**

**YOKOHAMA**

**www.LeesService.com**

**TWO LOCATIONS**

**Reedley • (559) 638-3535**

**Fresno • (559) 276-3535**

009065

# Advanced Dentistry

with a "Soft Touch"

**FRIENDLY COMFORTABLE  
ATMOSPHERE**

- Preventive Care
- Cosmetic Dentistry
- Nitrous Oxide Available
- Natural Looking Fillings
- Laser Fillings
- Whitening
- Crowns & Bridges
- Root Canals
- Full & Partial Dentures

[www.drottodds.com](http://www.drottodds.com)

Hours:

Mon. - Wed. 7am-3:30pm

Thurs. 7am-11am | Fri. 7am-3:30pm

FINANCING  
AVAILABLE

**638-1789**

1006 "E" Street (Corner of "E" & 10th) Reedley



Eugene D. Otto, DDS Inc.

009045



## The Chamber is culture.

We are unwavering in our commitment to improving the health of the business community AND the community as a whole, and we see the two inextricably connected.

Help us build a vibrant, diverse community as a member of the Greater Reedley Chamber of Commerce. Join today!



**GREATER REEDLEY**  
CHAMBER OF COMMERCE

[reedleychamber.com](http://reedleychamber.com)

559.638.3548



# CLUBS / COMMUNITY ORGANIZATIONS

**Airtime BMX**

300 E American Ave.  
Reedley, CA 93654  
559-696-0561  
Airtimebminfo@gmail.com

**American Legion**

P.O. Box 44  
Reedley, CA 93654

**R-Kids Club**

1362 L. Street  
Reedley, CA 93654  
559-638-8123  
www.reedleymbc.org

**Boys & Girls Club**

100 N. East Ave.  
Reedley, CA 93654  
559-743-7537

**Catholic Daughters of America -  
Lady of Grace Court #2637**

1018 N. Frankwood Ave.  
Reedley, CA 93654  
559-637-7248  
Saintanthonychurch\_reedley@comcast.net  
Saintanthonychurch-reedley.org

**Catholics In Action**

1060 F. Street  
Reedley, CA 93654  
559-638-2012  
Saintanthonychurch\_reedley@comcast.net  
Saintanthonychurch-reedley.org

**Community Life Garden**

P.O. Box 1582  
22899 E. Manning  
Reedley, CA 93654  
714-200-3684  
www.communitylifegarden.org

**CPT Joe F. Lusk II  
Memorial Foundation**

242 W. Palm  
Reedley, CA 93654  
559-859-2865  
susan.frances.lusk@gmail.com  
www.joelusk.org

**Fraternal Order of Eagles**

1230 11th Street  
Reedley, CA 93654  
559-638-5912

**Greater Reedley Chamber Junior Board**

1044 G Street  
Reedley, CA 93654  
559-638-3548  
info@reedleychamber.com  
reedleychamber.com/junior-board

**Kiwanis Club of Reedley**

1155 E. Springfield Ave.  
Reedley, CA 93654  
559-638-9226  
Vgenna@sierraview.org

**Knights of Columbus Council # 10264**

404 Manning Ave.  
Reedley, CA 93654  
559-999-0454  
Oandy1111@yahoo.com

**Reedley 4-H**

Reedley4Hclub@gmail.com  
Reedley4H.com

**Reedley Area Veterans**

P.O. Box 1627  
Reedley, CA 93654  
559-393-0389

**Reedley Boy Scouts - Troop 282**

Reedleytroop282@gmail.com

**Reedley Community Services**

100 Northeast Ave.  
Reedley, CA 93654  
559-637-4203  
reedley.ca.gov/community-services/

**Reedley Elks Lodge #2699**

760 F. St.  
Reedley, CA 93654  
559-638-5591

**Reedley Friendship House**

1128 E. Street  
Reedley, CA 93654  
559-260-6688

**Reedley Historical Society**

P.O. Box 877  
Reedley, CA 93654  
559-638-1913

**Reedley Kings Canyon  
Youth Soccer League**

Reedleysoccer.com

**Reedley Lions Club**

P.O. Box 41  
Reedley, CA 93654  
559-326-6034  
craigcooperlp@yahoo.com  
www.reedleylionsclub.com

**Reedley Little League**

P.O. Box 1313  
Reedley, CA 93654  
559-258-1523  
craigcooperlp@yahoo.com

**Reedley Marlins**

Reedleymarlinsswim17@gmail.com  
Reedleymarlinsswim.com

**Reedley Rotary Club**

P.O. Box 1161  
Reedley, CA 93654  
559-638-3535  
reedleyrotary@gmail.com  
reedleyrotary.com  
facebook.com/ReedleyRotary

**Reedley Vietnam Veterans**

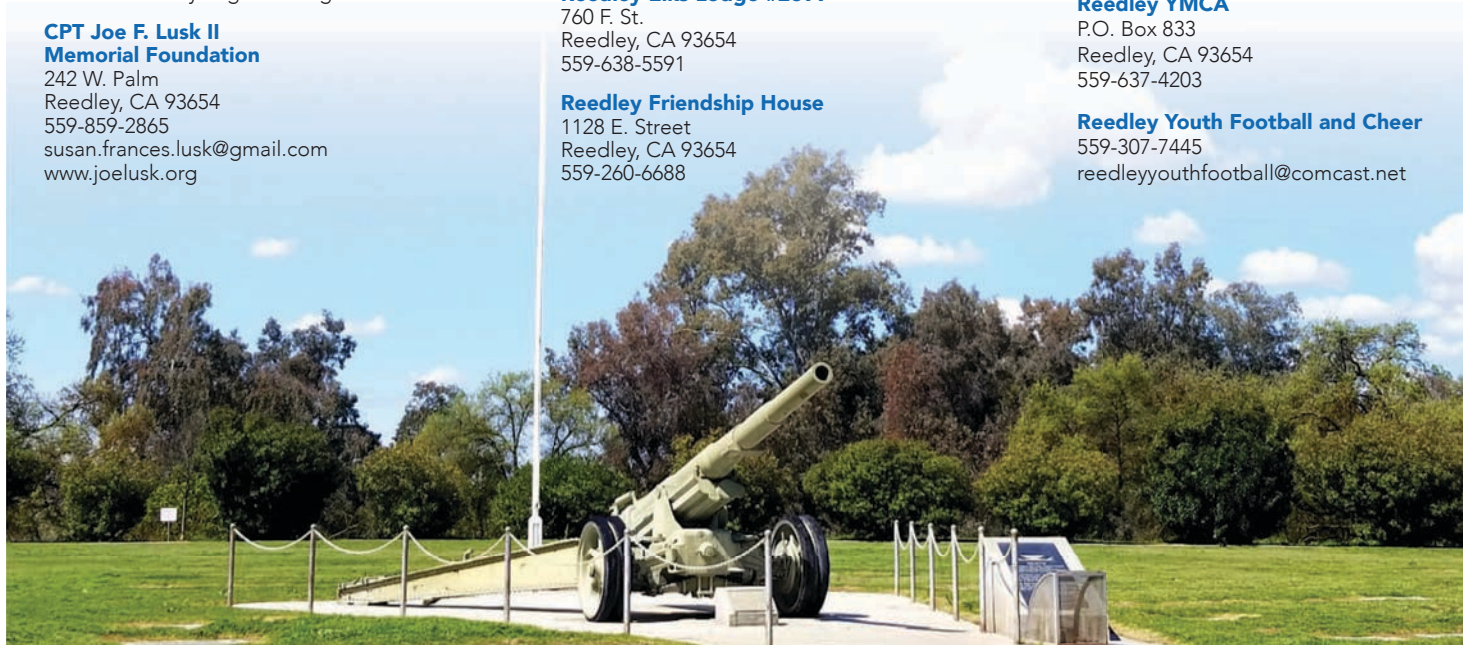
828 J. Street  
Reedley, CA 93654  
559-393-0389

**Reedley YMCA**

P.O. Box 833  
Reedley, CA 93654  
559-637-4203

**Reedley Youth Football and Cheer**

559-307-7445  
reedleyyouthfootball@comcast.net







**Buying or Selling a Home?**  
*Call Tracy First!*

**Better Homes and Gardens REAL ESTATE** | **BLOOM GROUP**

**Cell: 559.393.4913**  
www.arakakirealty.com  
DRE#01720550

**Tracy Arakaki**  
Your Real Estate Agent

**Call Today To Get Top Dollar For Your Property!**

**1749 11th Street • Reedley**

009060

## VALLEY AG INSURANCE




www.valleyagins.com

**Kay Nurmi DiMuro, LUTC**  
License #0563011  
kdmuro@valleyagins.com

Auto / Home  
Business / Life  
Commercial  
Work Comp.  
Farm / Crop  
Prof. Liab.

2416 W. Shaw Ave., Ste. 111  
Fresno, CA 93711  
Cell: (559) 977-4277  
Tel: (559) 431-3072  
Fax: (559) 431-3075

007835



**Mary's Boutique**  
Regalos Y Mas!

**Closed Tuesdays & Sundays**  
Open: Mon. 11-5  
Wed.-Sat. 11-5

- Women's Clothing
- Jewelry • Shoes • Purses
- Perfumes • Cologne

947 "G" St • Reedley, Ca 93654 • **743-7176**

009066



# MAINSTREET Cafe

Serving Reedley and surrounding communities since 1993, we are a family-owned and operated restaurant and we love to support our customers and community like our own family.

Breakfast served all day. Voted best breakfast in the Exponent's yearly "best of the best" the last couple of years.

**GREAT FOOD. GREAT FRIENDS. DOWNTOWN REEDLEY.**

1052 G Street, Reedley • 559-638-4082 • www.mainstreetcafereedley.com

LIKE US ON  

007833



# WORSHIP



## American Apostolic Church

1249 E Street  
Reedley, CA 93654  
559-638-2740

## Christ Lutheran Church

1254 N. Frankwood Ave.  
Reedley, CA 93654  
559-638-2112  
CLCreedleysecretary@gmail.com  
www.CLCReedley.org

## Church in the Basement

1595 S. Riverview  
Reedley, CA 93654  
559-859-8727

## Community Christian Fellowship

1547 13th Street  
Reedley, CA 93654  
559-638-1604

## Cornerstone Community Church

2160 11th Street  
Reedley, CA 93654  
Mstanlyo@sbcglobal.com

## Cruising for Jesus

804 E. 11th Street  
Reedley, CA 93654  
559-638-4449

## El-Faro Community Church

790 E. Evening Glow Ave.  
Reedley, CA 93654  
559-638-1543

## Faith Community Church of Reedley

314 W. Manning Ave.  
Reedley, CA 93654  
559-638-2730  
www.ReedleyEFC.org

## First Mennonite Church

1254 L Street  
Reedley, CA 93654  
559-638-2917

## First Southern Baptist Church

729 E. Manning Ave.  
Reedley, CA 93654  
559-638-3881

## First United Methodist Church

1461 11th Street  
Reedley, CA 93654  
559-638-2142  
ReedleyFirst@gmail.com

## Heritage Church Reedley

920 F Street  
Reedley, CA 93654  
559-375-6783  
patorjimbaker@gmail.com

## Iglesia Bautista Fundamental

729 E. Manning Ave.  
Reedley, CA 93654  
559-596-8281

## Kingdom Hall of Jehovah's Witnesses

8254 S. Frankwood Ave.  
Reedley, CA 93654  
559-637-1470

## LIFEhouse Valley Church

1445 N. Frankwood Ave. / P.O. Box 369  
Reedley, CA 93654  
559-638-2200

## Methodist Fellowship Church

1506 12th Street  
Reedley, CA 93654  
559-638-2712

## Redeemer's Church

819 W. Parlier Ave.  
Reedley, CA 93654  
559-638-3435  
info@redeemerschurch.com  
www.Reedleyredeemerschurch.com

## Reedley Apostolic Praise Tabernacle

765 E. 11th Street  
559-908-1379  
https://raptchurch.wixsite.com/reedleyapostolicprai

## Reedley Full Gospel Tabernacle – Assembly of God Church

519 E. 11th Street  
Reedley, CA 93654  
559-638-2739  
Revronrobertson@gmail.com  
www.ReedleyFullGospel.com

## Reedley Buddhist Church

2035 11th Street  
Reedley, CA 93654  
559-638-2146  
ojoydonaldson@gmail.com  
www.ReedleyBC.org

## Reedley Mennonite Brethren Church

1362 L Street  
Reedley, CA 93654  
559-638-8123  
www.reedleymbc.org

## Reedley Seventh-Day Adventist Church

1119 E. Street  
Reedley, CA 93654  
559-393-8257

## River Harvest Church

856 S. Reed Ave.  
Reedley, CA 93654  
559-638-8882

## St. Anthony Roman Catholic Church (Old)

1060 F Street  
Reedley, CA 93654  
559-638-2012  
Stanthonychurch\_reedley@comcast.net  
www.Stanthonychurch-reedley.org

## St. Anthony Roman Catholic Church (New)

1018 N. Frankwood Ave,  
Reedley, CA 93654  
559-638-2012  
Stanthonychurch\_reedley@comcast.net  
www.Stanthonychurch-reedley.org

## United Pentecostal Church of Reedley

1408 J Street  
Reedley, CA 93654  
559-901-3650







**Reedley  
College**



**LORENZO RIOS**

**Flight Science**

**Class of 2021**

***First Officer, Contour Airlines***

**START HERE,  
GO ANYWHERE!**

**www.reedleycollege.edu**

**#GOTIGERS**

005720



**Sweet Girl Farms**

**Reedley's Year-Round  
Fruit Stand**

**Farm Fresh**

- 🍷 Fruits & Vegetables
- 🌿 Herbs 🌸 Flowers
- 🥗 Salsa
- 🍹 Winter Time Juices



009315

— 8358 S. Alta Ave. | Reedley | 323.314.1967 —  
www.sweetgirlfarms.com



**Michael Miller**  
Realtor®

DRE #01494554

mmiller@guarantee.com

**G | GUARANTEE  
REAL ESTATE**  
A Berkshire Hathaway Affiliate

Serving Central CA Since 2005

*Specializing in*

🏡 **Single Family Homes**

🌾 **Farms** 🏠 **Ranches**

📷 reedley-ca-93654

009075

**1049 G Street, Reedley | 559-859-8768**

**1601 10TH STREET REEDLEY, CA. 93654**



**THE  
COMMUNITY GYM  
THAT SERVES YOU**

**(559) 638-9895**



009070



# Book Your Trip Now!

**WE SELL THE WORLD**

- \* Vacation Packages
- \* Cruises
- \* Group Travel

*and so much more!*



*In business in Reedley for over 36 years!*

**Golden Valley Travel**

Open:  
Mon - Fri  
11am - 3pm  
(Preferably by appointment only)



**(559) 638-8151**



[www.goldenvalleytravel.com](http://www.goldenvalleytravel.com)

007825



## NEW EMPLOYMENT OPPORTUNITIES (NEO-ESE) EXPANDED SUBSIDIZED EMPLOYMENT PROGRAM

### Real Life Business Solutions

The NEO-ESE program was created to respond to the needs of enrolled job seekers while providing an incentive to employers that create and retain full time jobs in Fresno County.

For every NEO-ESE hire, the employer shall be reimbursed only for actual wages paid in accordance to the table shown below:

Initial Placement	Wage Reimbursement
Weeks 1 - 13	100%
Weeks 14 - 26	75%

\*Two possible 13 week extensions upon approval



[www.ready2hire.org](http://www.ready2hire.org)

009081



For employer requirements or to begin to take advantage of this Fresno County Hiring Incentive, all employers need to register:

[www.ready2hire.org](http://www.ready2hire.org) or call the Fresno County Economic Development Corporation at 559.444.5550, email [bear@fresnoedc.com](mailto:bear@fresnoedc.com)

Funded by the County of Fresno

**WES ISAAC**  
*construction*  
— Since 1981 —



**Completed state-of-the-art medical facility.  
Let Us Build Your Next Project!**

*Specializing in  
Commercial &  
Remodeling*

- Commercial
- Demolition
- Earth Work
- Tenant Improvements
- Metal Buildings
- Concrete

**933 G Street | REEDLEY  
638-1228**

005591



# Chamber Business Directory

## ACCOUNTING & BOOKKEEPING

### CSI Accounting Associates

P.O. Box 407  
Reedley  
559-643-5568

### Martin & Just, LLP

1580 11th Street  
Reedley  
559-638-6444

### Stephen L. German Acct. Corp.

1001 G Street  
Reedley  
559-638-9248

## ADVERTISING

### CEIS, LLC

Austin  
727-415-4332

### Jeff Lowrance

Reedley  
559-319-2843

### Mid-Valley Publishing

1130 G Street/  
P.O. Box 432  
Reedley  
559-638-2244

### Valley Yellow Pages

1850 N. Gateway Blvd.  
Fresno  
800-350-8887

## APPAREL

### Cottonwood Clothing

1036 G Street  
Reedley  
559-393-7777

### Mary's Regalos y Mas

947 G Street/  
777 N. Reed Ave.  
Reedley  
59-743-7176

## ATTRACTIONS

### Hobb's Grove

14265 E Goodfellow Ave.  
Sanger  
559-356-3958

### Mennonite Quilt Center

1012 G Street  
Reedley  
559-638-3560

### Reedley Museum

1752 10th Street  
Reedley  
559-638-1913

### Reedley's River City Theatre Company

1720 10th Street  
Reedley  
559-638-6500

### The Riverbend RV and Campground

850 N. Kings River Rd.  
Reedley  
559-970-6156

### Wonder Valley Ranch

6450 Elwood Road  
Sanger  
559-787-2551

## AUTO REPAIR

### Rod's Paint & Body

1348 G Street  
Reedley  
559-638-2548

## AUTOMOTIVE SALES & SERVICE

### Jaber Motors

1646 G Street  
Reedley  
559-643-9425

### Martens Chevrolet

1050 I Street  
Reedley  
559-638-2240

## BAKERY

### Pasteleria Plaza

1614 11th Street  
Reedley  
559-638-1242

## BANKS

### Bank of the Sierra

1095 W. Manning Ave.  
Reedley  
559-638-1602

### Educational Employees Credit Union

873 W. North Ave.  
Reedley  
559-305-7454

### Fresno First Bank

7690 N. Palm Ave, #101  
Fresno  
559-900-6323

### Larry Rodriguez (Wells Fargo Advisor)

1603 11th Street  
Reedley  
559-393-6725

### Mechanics Bank

1003 I Street  
Reedley  
559-638-8131

### Noble Credit Union

2851 Highland Ave  
Selma  
559-451-2392/  
559-451-2358

## BOUTIQUES

### The Nest

1034 G Street  
Reedley  
559-638-2635

### Reedley Trading Post

965 I Street  
Reedley  
559-637-1177

## BUSINESS/SOCIAL SERVICES

### Fresno County Department of Social Services

205 W. Pontiac Way, Ste. 2  
Clovis  
559-600-2319

### Fresno County Economic Development Corporation

906 N Street, Ste. 120  
Fresno  
559-476-2500

### Fresno Regional Workforce Development Board

2125 Kern Street, Ste. 208  
Fresno  
559-490-7100

## CAR WASH

### Kimo's Tropical Car Wash

17591 E. Huntsman Ave.  
Reedley  
559-637-7234

## CARPENTRY

### Haustyle Supply

138 W. Carpenter Ave.  
Reedley  
559-970-6845

### Nick's Fix Las Vegas

8205 Fawn Brook Ct.  
Las Vegas  
702-326-2288

## CHAMBER OF COMMERCE

### Dinuba Chamber of Commerce

210 North L Street  
Dinuba  
559-591-2707

### Greater Reedley Chamber of Commerce

1044 G Street  
Reedley  
559-638-3548

### Kingsburg District Chamber of Commerce

1475 Draper Street  
Kingsburg  
559-897-1111

### Orange Cove Area Chamber of Commerce

P.O. Box 284  
Orange Cove  
559-425-0705

### Sanger District Chamber of Commerce

1789 Jensen Ave., Ste. B  
Sanger  
559-875-4575

### Selma District Chamber of Commerce

1821 Tucker Street  
Selma  
559-891-2235

## CHIROPRACTIC

### Dr. Steven L. Olfert, D.C.

1926 11th Street  
Reedley  
559-638-2558

## CLUBS/ORGANIZATIONS

### Boys & Girls Club

100 N. East Ave.  
Reedley  
559-743-7537

### Community Life Garden

22899 E. Manning Ave./  
P.O. Box 1582  
Reedley  
714-200-3684

### Kings River Conservancy

P.O. Box 1550  
Reedley  
559-787-9500



# Chamber Business Directory

## **Kiwanis Club of Reedley - Sunrise**

1155 E. Springfield Ave.  
Reedley  
559-638-9226

## **Reedley Elks Lodge**

760 F Street  
Reedley  
559-704-2086

## **Reedley Historical Society**

P.O. Box 877  
Reedley  
559-638-1913

## **Reedley Lions Club**

P.O. Box 41  
Reedley  
559-304-9006

## **Reedley Rotary Club**

P.O. Box 1161  
Reedley  
559-638-3535

## **CONSTRUCTION/REMODEL**

### **Lionsgate Construction**

1301 I Street  
Reedley  
559-393-8272

### **Matt Co/ Reedley Remodel Center**

1542 G Street  
Reedley  
559-638-2843

### **Wes Isaac Construction, Inc. (MD Ventures)**

933 G Street  
Reedley  
559-638-1228

### **Yanez Construction**

42931 Road 52  
Reedley  
559-638-6644

## **DENTAL OFFICES**

### **Eugene D. Otto, DDS**

1006 E Street  
Reedley  
559-638-1789

### **Mark Luzania, DDS**

1117 G Street  
Reedley  
559-638-1777

## **Reedley Family Dental**

929 W. Manning Ave.  
Reedley  
559-637-0123

## **EDUCATION**

### **Proteus, Inc.**

1579 Jensen Ave., Suite 108  
Sanger  
559-875-7146

### **Valley Regional Occupational Program**

1305 Q Street  
Sanger  
559-876-2122

## **ELECTRICIANS**

### **Egli Electric**

Reedley  
559-206-6962

## **FARMING**

### **Brandt Farms, Inc.**

6040 Ave. 430  
Reedley  
559-638-6961

### **Bravante Produce**

1356 S. Buttonwillow Ave.  
Reedley  
559-639-2929

### **Gar Bennett, Inc.**

8246 S. Crawford Ave.  
Reedley  
559-638-6311

### **Kings River Tractor**

1230 G Street  
Reedley  
559-638-2205

### **Prima Wawona**

975 I Street  
Reedley  
559-638-9281

### **Sweet Girl Farms**

8358 S. Alta Ave.  
Reedley  
323-314-1967

### **Trinity Packing Company**

P.O. Box 28905  
Fresno  
559-433-3785

## **FUNERAL SERVICES**

### **The Dopkins Co. Inc.**

2200 S. Reed Ave.  
Reedley  
559-638-7000

### **Rico's Memorial Stones Inc.**

1318 G Street  
Reedley  
559-638-1388

### **Sterling & Smith Funeral Home**

139 W. Mariposa Street  
Dinuba  
559-595-7940

## **GIFTS**

### **Betty's Gifts**

1604 11th Street  
Reedley  
559-643-9314

### **Gabriela's Bling Boutique**

Reedley  
559-356-2932

### **Scentsy with Lisa**

Reedley  
559-305-1630

### **Trendy-Bitz**

Earlimart  
662-448-5154

## **GYMS/FITNESS CLUBS**

### **Elite Team Reedley**

1564 E. Manning Ave.  
Reedley  
559-300-7054

### **Fitness Quest Health Club**

1601 10th Street  
Reedley  
559-638-9895

### **GNARDOG CrossFit**

960 G Street  
Reedley  
559-743-7860

### **Xcelerate Fitness**

555 I Street  
Reedley  
559-638-2300

## **HAIR SALONS**

### **Meraki Hair Studio**

740 G Street, Suite F  
Reedley  
559-480-6987

## **Zemo's Salon**

1711 11th Street  
Reedley  
559-393-1671

## **HARDWARE STORES**

### **Golden Valley Ace Hardware**

975 E. Manning Ave.  
Reedley  
559-743-7888

### **Reedley Lumber & Building Center**

1547 G Street  
Reedley  
559-638-2512

## **HOUSE CLEANING**

### **Rescue Clean**

Reedley  
393-4275

## **HEALTH FOOD STORE**

### **Baby's Nutrition**

1568 E. Manning Ave.  
Reedley  
559-726-2997

## **HEALTH THERAPY**

### **150 Below Cryo**

960 G Street  
Reedley  
559-743-7214

## **INSURANCE SERVICES**

### **Academy West Insurance**

1720 E. Dinuba Ave.  
Reedley  
559-614-6282

### **Allstate Kings Canyon Insurance Group**

1318 E. Manning Ave.  
Reedley  
559-638-8930

### **Goosehead Insurance (Esther Ramos)**

1680 12th Street  
Reedley  
559-643-2073



# Chamber Business Directory

**Horstmann Financial & Insurance Services**  
205 E. River Park Cir., #220  
Fresno  
559-447-3965

**Humana Insurance (Pam Acuna)**  
516 Shaw Ave., #200  
Fresno  
559-221-2522

**New York Life (Jorge Cruz)**  
Selma  
559-313-8903

**Reedley Insurance Agency**  
1146 G Street  
Reedley  
559-638-2226

## LAND SURVEYING

**Base Consulting Group Inc.**  
1713 11th Street, Ste. 1  
Reedley  
559-637-1544

## LAWN/TREE SERVICE

**Angel's Tree Service**  
Reedley  
559-827-6050

**Midas Touch Lawn Service**  
Dinuba  
559-859-5363

## MANUFACTURING

**BW Packaging Systems, Inc. (Thiele Technologies, Inc.)**  
315 27th Avenue  
Minneapolis  
800-344-8951

## MASSAGE THERAPY

**A Touch of Holly**  
1650 11th Street  
Reedley  
559-743-5021

## MECHANICAL ENGINEERING

**Valley CAD, LLC**  
Reedley  
559-726-2276

## MEDICAL CENTERS

**Adventist Health Community Care**  
1021 N. Douty St.  
Hanford  
559-537-1536

**Omni Family Health**  
4900 California Ave., Ste. 400B  
Bakersfield  
661-459-1900

## MEDICAL TRANSPORTATION

**Tri County Medical Transport**  
659 E. Dinuba Ave.  
Reedley  
559-637-1851

## MORTGAGE

**Aleman Mortgage Company**  
641 W. North Ave.  
Reedley  
559-638-5126

**CrossCountry Mortgage**  
1011 G Street  
Reedley  
559-206-7855

**Kings Mortgage**  
935 G Street  
Reedley  
559-638-3338

**Resban (Victor Garcia)**  
Fresno  
559-653-2373

## NON-PROFIT ORGANIZATION

**California Health Collaborative (Unidos Por Salud Project)**  
1680 W. Shaw Ave./ P.O. Box 25609  
Fresno  
559-244-3610

**Cruising For Jesus**  
804 E. 11th Street  
Reedley  
559-708-2351

**Marjaree Mason Center - FSP**  
1015 G Street  
Reedley  
559-638-0494

**Sierra Kings Health Care District**  
1011 G Street  
Reedley  
559-726-2268

## NOTARY PUBLIC

**Montoya Mobile Notary**  
1715 11th Street (Upstairs)  
Reedley  
559-725-1885

**Vanessa's Mobile Notary**  
Reedley  
559-305-9763

## OFFICE SPACE

**Reedley Executive Center**  
1011 G Street  
Reedley  
559-726-2272

## OPTOMETRISTS

**Reedley Optometric Eyecare Center**  
1630 11th Street  
Reedley  
559-638-2246

## PARAMEDICS

**Sequoia Safety Council**  
500 E. 11th Street  
Reedley  
559-638-9995

## PET BOARDING/ GROOMING

**Pet Haven Cottages & Resort**  
819 I Street  
Reedley  
559-726-2177

## PHOTOGRAPHERS

**Blossom Trail Photo**  
809 I Street  
Reedley  
559-637-4222

**Frankie Leal Photography**  
Reedley  
559-287-3978

## PHYSICAL THERAPY

**Compass Physical Therapy**  
921 G Street  
Reedley  
559-638-9200

## PLUMBING

**Dave Knoll Plumbing**  
883 E Dinuba Ave  
Reedley  
559-638-3902

## POOL SERVICE

**Siloam Pool Care, LLC**  
1011 G Street  
Reedley  
559-241-1010

## PRINTING/SHIPPING

**Sequoia Print and Ship**  
587 I Street  
Reedley  
559-638-0188

## PRIVATE SCHOOLS

**Immanuel Schools**  
1128 S. Reed Ave.  
Reedley  
559-638-2529

## PUBLIC SCHOOLS

**Reedley College (State Center Community College District)**  
995 N. Reed Ave.  
Reedley  
559-638-0300

**Kings Canyon Unified School District**  
1801 10th Street  
Reedley  
559-305-7010

## PUBLIC UTILITIES

**PG&E**  
2445 Capitol Street, #210  
Fresno  
559-263-5310



# Chamber Business Directory

## RANCH MANAGEMENT

**Cove Ranch Management**  
1315 E. Curtis Ave.  
Reedley  
559-638-7544

## REAL ESTATE

**Aleman Realty**  
1114 G Street  
Reedley  
559-638-5126

**Better Homes & Gardens  
(Bloom Group)**  
1749 11th Street  
Reedley  
559-393-4913

**Gloria Banuelos  
(Guarantee Real Estate)**  
1049 G Street  
Reedley  
559-930-8449

**Guarantee Real Estate**  
1049 G Street  
Reedley  
559-638-4664

**Isaak Realtor Team**  
1049 G Street  
Reedley  
559-637-0044

**Newton & Sons  
Real Estate**  
1025 G Street  
Reedley  
559-638-2500

**San Joaquin Valley Homes**  
5607 Avenida de los Robles  
Visalia  
559-732-2660

**Valley Land & Investment**  
1053 G Street  
Reedley  
559-638-3651

## RELIGIOUS ORGANIZATIONS

**First Mennonite Church**  
1208 L Street/P.O. Box 111  
Reedley  
559-638-2917

**LIFEhouse Valley Church**  
1445 N. Frankwood/  
P.O. Box 369  
Reedley  
559-638-2200

**Reedley Buddhist Church**  
2035 15th Street/  
P.O. Box 24  
Reedley  
559-905-3107

**Saint Anthony's Church**  
1018 N Frankwood Ave.  
(North)  
1060 F Street (South)/  
P.O. Box 188  
Reedley  
559-638-2012

## RENTAL SERVICE

**AAA Quality Services**  
P.O. Box 535  
Farmersville  
559-594-4322

## RESTAURANTS/BARS

**Drunk Donkey Bar & Grill**  
1041 G Street  
Reedley  
(559) 726-2419

**El Viejon Bar & Grill**  
1261 G Street  
Reedley  
559-305-4894

**Legacy Bar & Lounge**  
1333 I Street  
Reedley  
559-305-6209

**Mainstreet Café**  
1052 G Street  
Reedley  
559-638-4082

**Mariscos El Tarasco**  
1474 E. Manning Ave.  
Reedley  
559-638-1452

**McDonald's**  
7043 W. Pershing Ave.  
Visalia  
559-738-8588

**Port of Subs 154**  
1079 W. Manning Ave.  
Reedley  
559-643-0381

**Reedley Sandwich Shop**  
1154 G Street  
Reedley  
559-643-0025

**The Pirate's Den**  
1550 E. Manning  
Reedley  
559-643-0797

**The Wakehouse**  
850 N. Kings River Rd.  
Reedley  
559-637-9000

**Tomanni Bistro**  
1119 G Street  
Reedley  
559-743-7901

**Valentino's  
Italian Restaurant**  
1043 G Street  
Reedley  
559-638-3706

**Willies Café**  
1663 11th Street  
Reedley  
559-743-7160

## ROOFING

**Magallon's Roofing**  
23205 Clayton Ave.  
Reedley  
559-638-6261

## SECONDHAND STORES

**Nearly New Shop**  
1022 G Street  
Reedley  
559-638-4769

## SENIOR LIVING

**Palm Village Retirement  
Community**  
703 W. Herbert/  
P.O. Box 1028  
Reedley  
559-638-6933

**Sierra View Homes**  
1155 E. Springfield Ave.  
Reedley  
559-638-9226

## SOLAR

**American Solar Logistics  
(Jared Fisher)**  
Reedley  
385-666-7122

## STORAGE FACILITIES

**Heritage Self Storage**  
1885 E. Dinuba Ave.  
Reedley  
559-638-4342

**Lock & Leave Self Storage**  
344 E. Dinuba Ave.  
Reedley  
559-638-3344

**Storland Self Storage**  
776 N. Haney Ave.  
Reedley  
559-638-2393

## TIRE SALES & SERVICES

**Lee's Service**  
1445 I Street  
Reedley  
559-638-3535

**Les Schwab Tire**  
379 I Street  
Reedley  
559-637-1585

## TRAVEL AGENTS

**Altours (Keiko Hatakeda)**  
Reedley  
559-421-9020

## WASTE MANAGEMENT

**Mid Valley Disposal**  
1535 Ave. 392  
Kingsburg  
559-567-0640

**Zweigle Septic Service**  
5272 S. Frankwood  
Reedley  
559-638-8811

**Pena's Disposal, Inc.**  
12094 Ave. 408  
Cutler  
559-528-3909





# WEST COAST MENNONITE CENTRAL COMMITTEE

## ABOUT US

A worldwide ministry of Anabaptist churches, shares God's love and compassion for all in the name of Christ by responding to basic human needs and working for peace and justice. MCC envisions communities worldwide in right relationship with God, one another and creation.

*Established in 1920*

## OUR SERVICES

- Immigration Services
  - Legal Consultations
  - Family Petitions
  - Green Card Renewals
- Young Adult Programs
- Transformative Justice
  - Conflict Resolution Training
- Global Learning Tours

**COME MAKE A KIT THAT IMPACTS THE  
GLOBAL COMMUNITY!**

**WEST COAST MCC  
RELIEF CENTER  
GRAND OPENING  
SPRING OF 2023  
1012 G Street**

Relief Kits

Quilting & Sewing

Visual Arts

Volunteer Opportunities

Coffee & Community Area

1010 G street  
559 638 6911  
mcc.org



0090600





**PALM VILLAGE**  
RETIREMENT COMMUNITY

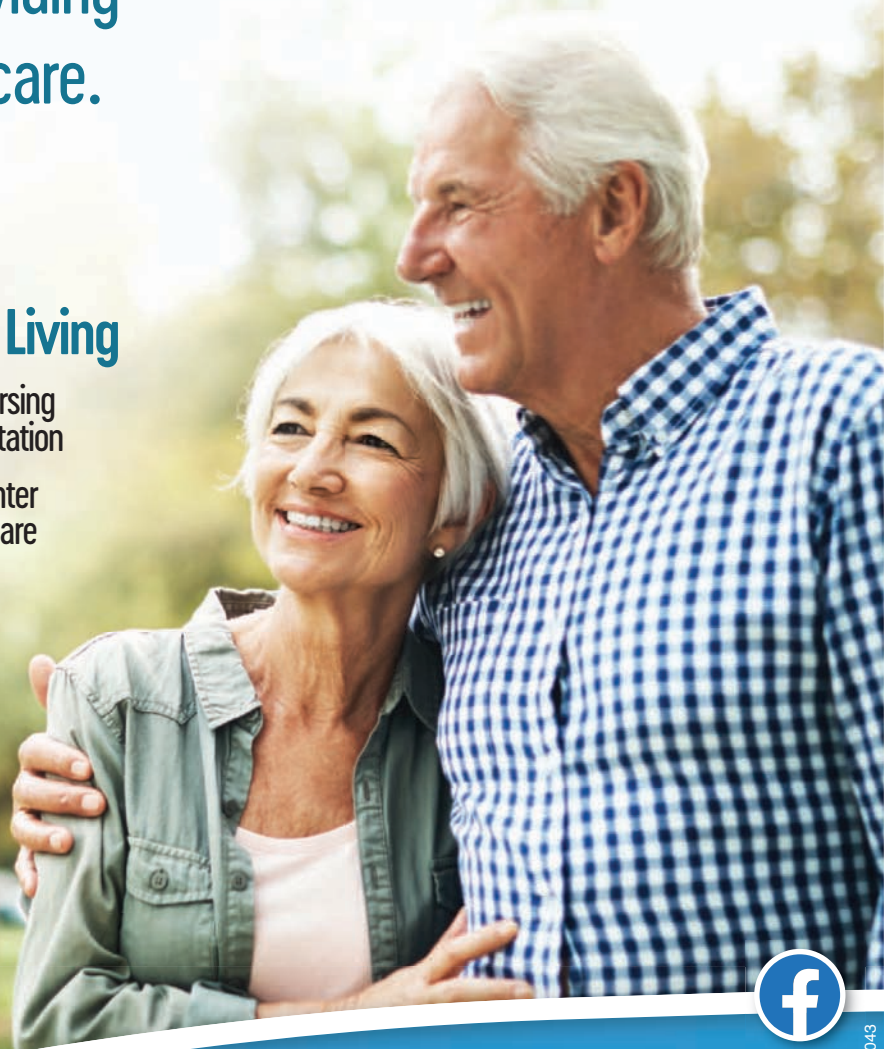
Palm Village Retirement Community is celebrating it's **80th year** of providing senior living and care.

## **5** Levels of Residential Retirement Living

- | Independent Living
- | Assisted Living
- | Assisted Living Memory Care
- | Skilled Nursing & Rehabilitation
- | Wiebe Center Memory Care



Please visit our website for a Virtual Tour of our campus.



009043



COA #170 Lic.#100404809  
We are licensed not-for-profit 501 (c)(3)  
We do Business in Accordance with the Federal Fair Housing Law

**(559) 638-6933**  
**PalmVillage.com**  
703 W. Herbert Avenue | Reedley, CA





Come see the  
Martens Chevrolet difference!

*"Treating You Better Since 1929"*



FIND **NEW** ROADS™

CHEVROLET



**1050 I St. | Reedley | 559.638.2240**

[www.martenschevrolet.com](http://www.martenschevrolet.com)

009071