

SOLRURAL HOUSE

A-DOS-RUIVOS

by

WASO + ALT
| ARCHITECTURE | | PROMOTER |



We are designing a new reality, a better future and a new living model.

WASO Design is proud to present this project in collaboration with ALT – Advance Land Transformation, a visionary developer dedicated to creating and promoting unique products and developments based on the highest standards of quality and sophistication.

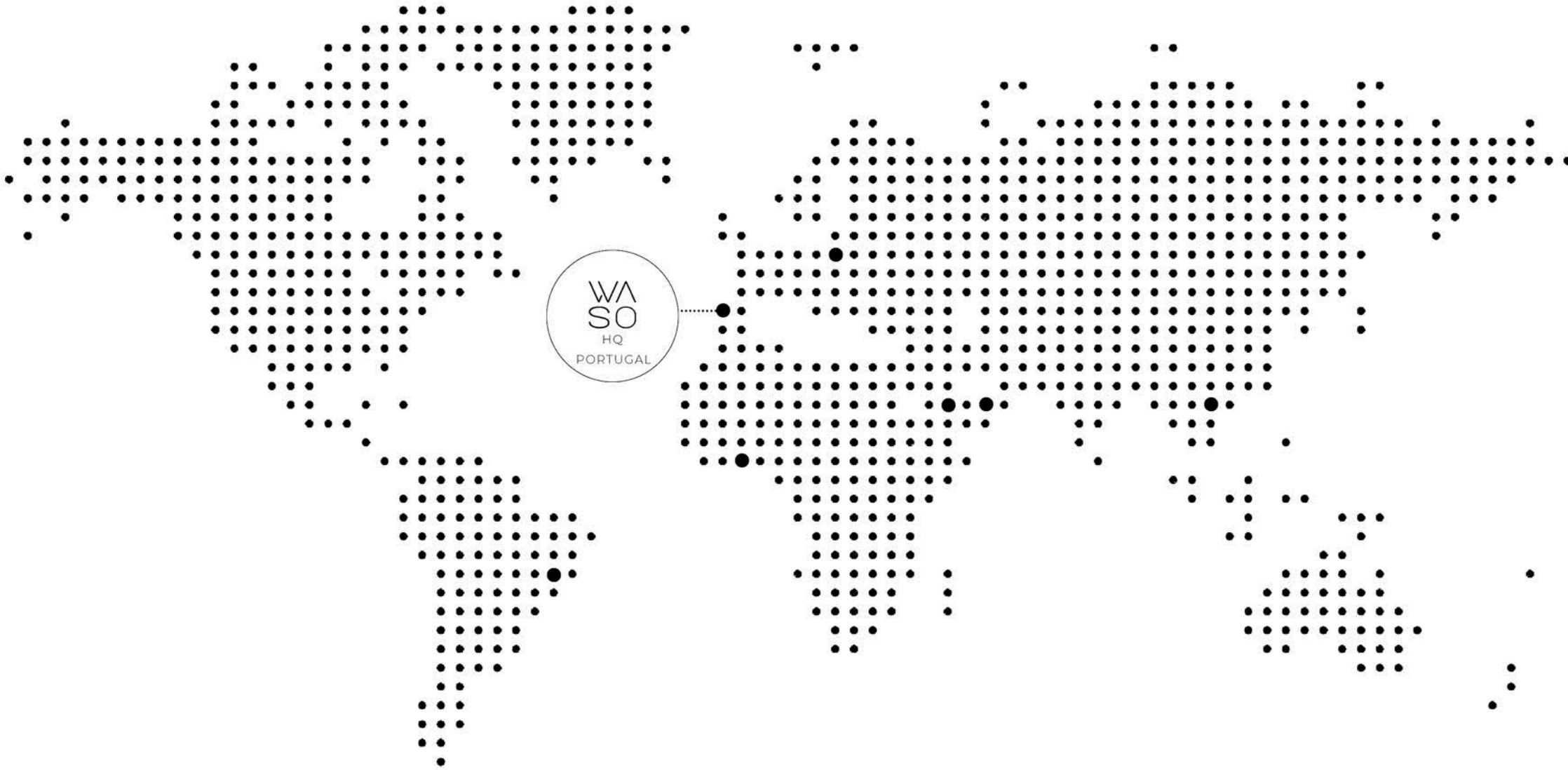
This partnership brings together the creative and technical excellence of WASO Design — specialized in architecture, interior design, and strategic solutions — with ALT's innovative approach to transforming land into benchmark projects. Together, these two entities share a common commitment to innovation, sustainability, and lasting value.

WASO Design leads the creative and architectural development of this project, translating ALT's vision into modern, functional, and emotionally engaging spaces. Every detail is carefully crafted, reflecting a deep understanding of future users' needs and a meticulous attention to aesthetics and functionality.

More than just a development, this project is a statement of shared values: integrity, excellence, and the ambition to redefine industry standards through unique and memorable experiences.

"Inspired by innovation, driven by quality | together, we turn extraordinary ideas into high-impact realities."





Global
presence



Dear Investor,

We are pleased to present you with a unique investment opportunity in Portugal, a country that has stood out as one of the most attractive destinations for real estate investment in Europe. We propose the construction of an exceptional house, with a truly unique architecture, located in a privileged location that combines the charm of traditional Portugal with the modernity and comfort that investors are looking for.

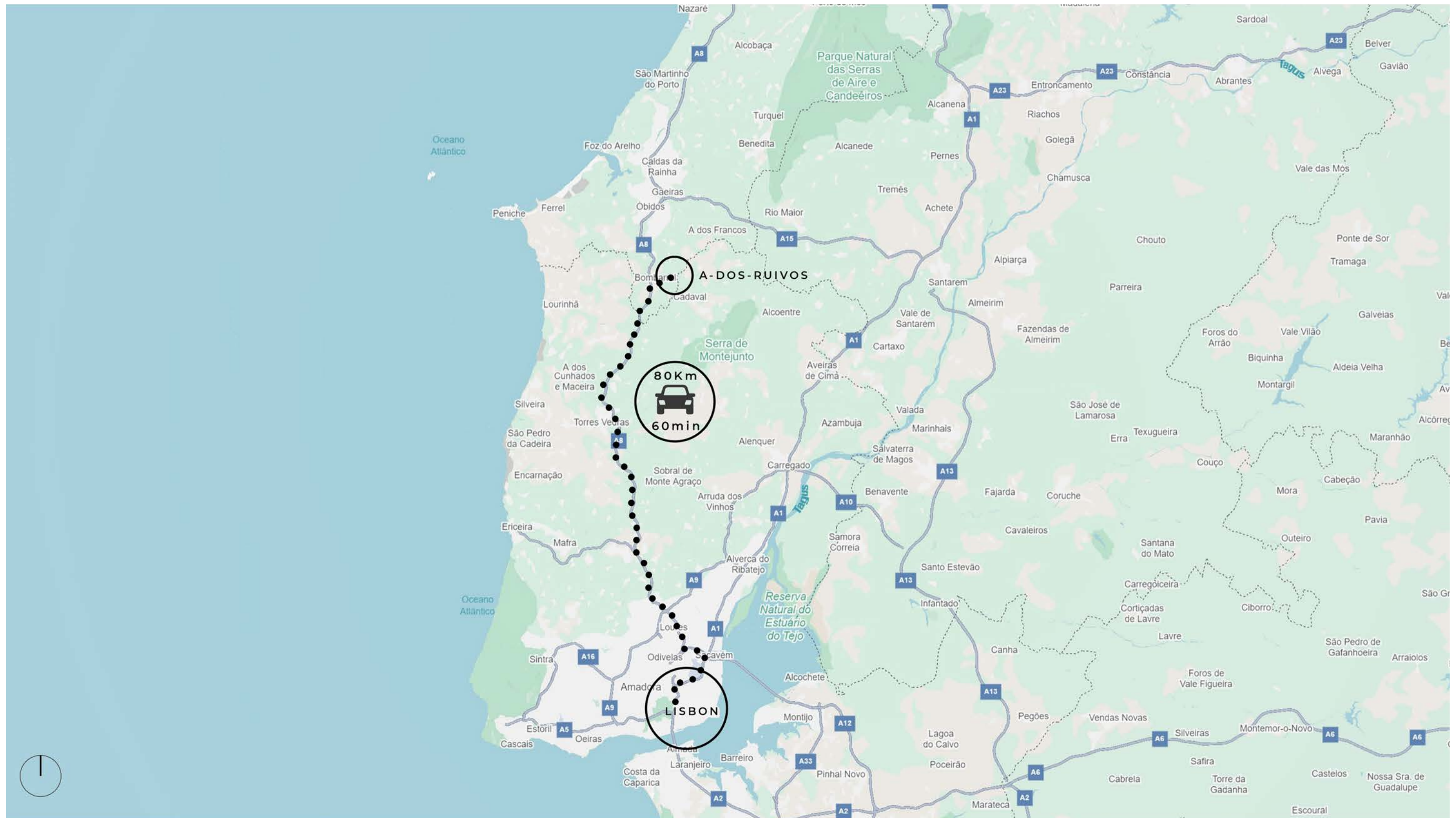
Our property, with its unique architecture, will be a jewel in the Portuguese real estate market and in architecture magazines. Designed to blend into nature, it combines traditional Portuguese elements with contemporary design, resulting in a truly unique and stunning residence.

Located in the West region of Portugal, in a privileged area, the house will enjoy stunning panoramic views. This strategic location makes it a high potential property, an appreciable investment, with considerable appreciation potential.

You will have a %100 dedicated, present and highly experienced team, who will take care of all aspects, from conception to execution and optimizing the return on your investment. Our team of experts will take on complete construction management, ensuring that every detail is handled with precision and efficiency. Furthermore, we will be attentive to optimizing your investment, identifying strategies that maximize your return.

We know the Portuguese real estate market well, and especially the potential of this investment, where the house speaks for itself. Our commitment is to maximize the investment potential of this home, providing you with an exceptional return. We are ready to create value and provide a profitable investment journey, while you enjoy the benefits of our highly committed team of experts. In this following illustration, there is a brief presentation of the investment business model that we propose.



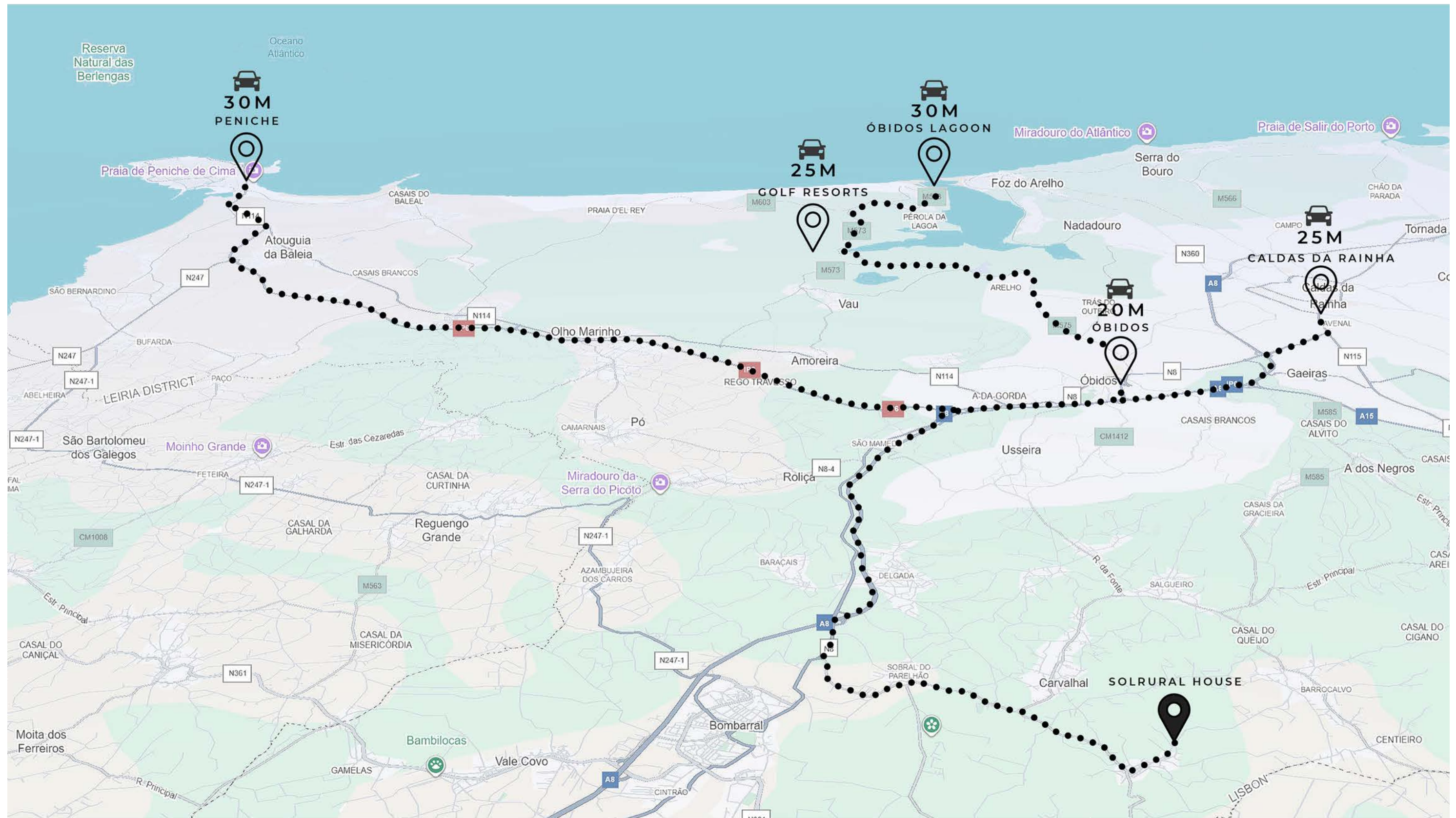


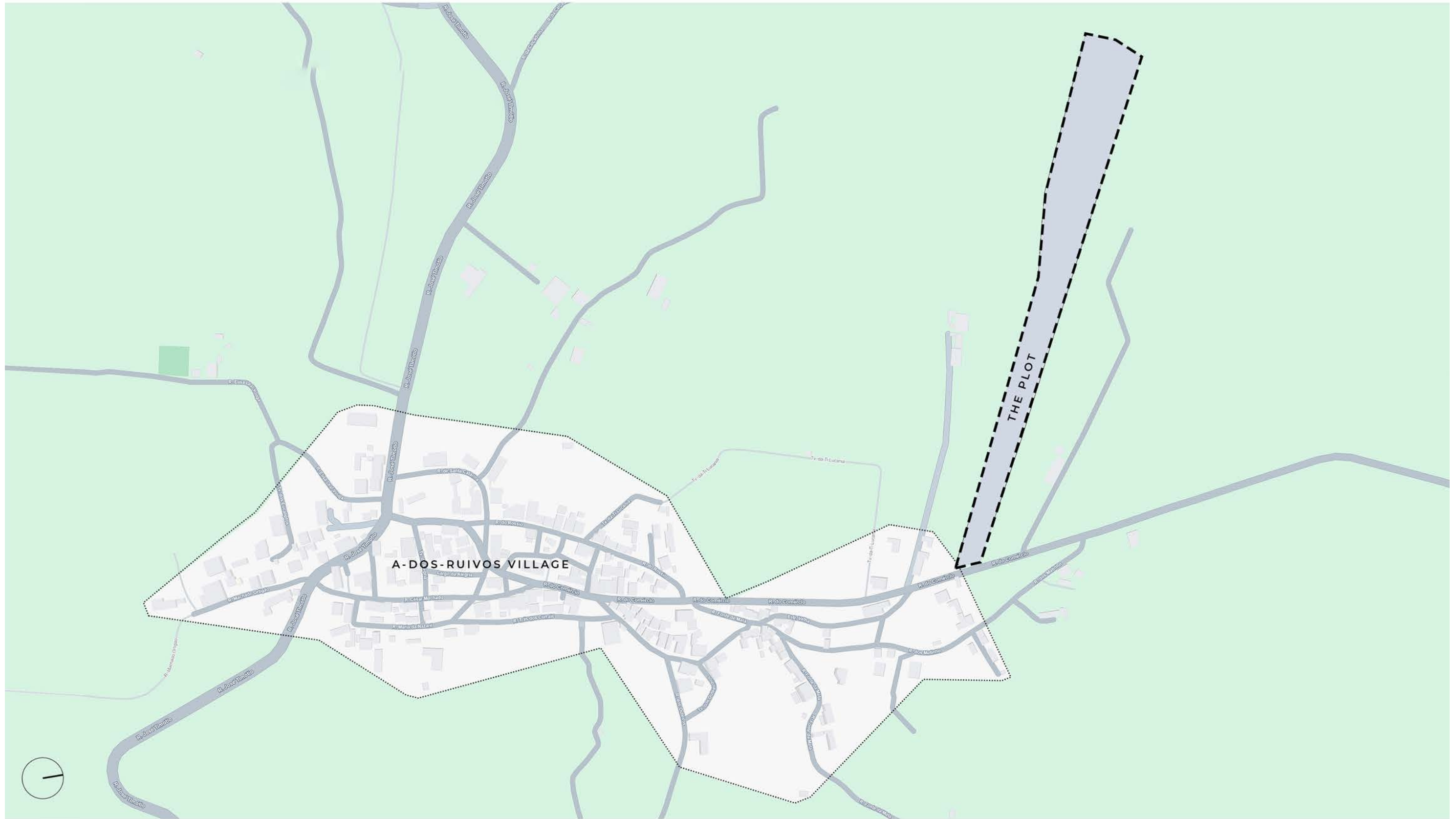


"Serenity with Strategic Potential"

"Nestled in the calm of the Portuguese countryside, just one hour from Lisbon and 30 minutes from the coast, this new project offers the perfect blend of location, lifestyle, and long-term value. Surrounded by nature and tradition, yet within easy reach of urban and coastal life, it presents a rare chance to invest in a development that balances serenity with strategic potential. Whether for living, leisure, or return, this is a place where future and heritage meet."







A-DOS-RUIVOS

"Is pure countryside soul, calm,
authentic, and untouched.

A place where tradition lives
and nature leads."





WEST VIEW OVER THE PLOT



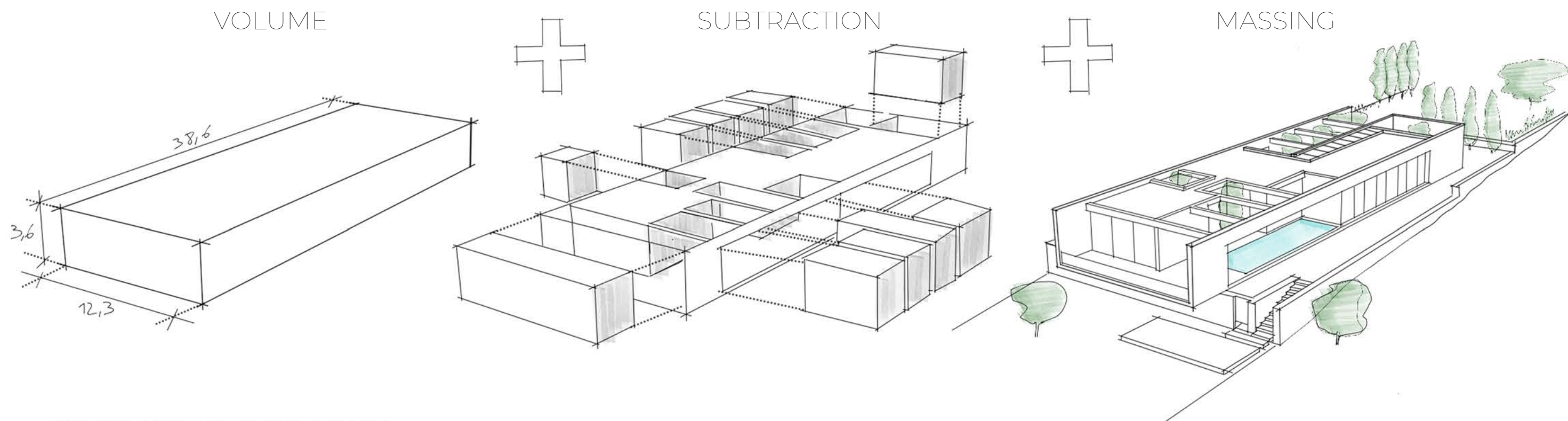
NORTH SIDE





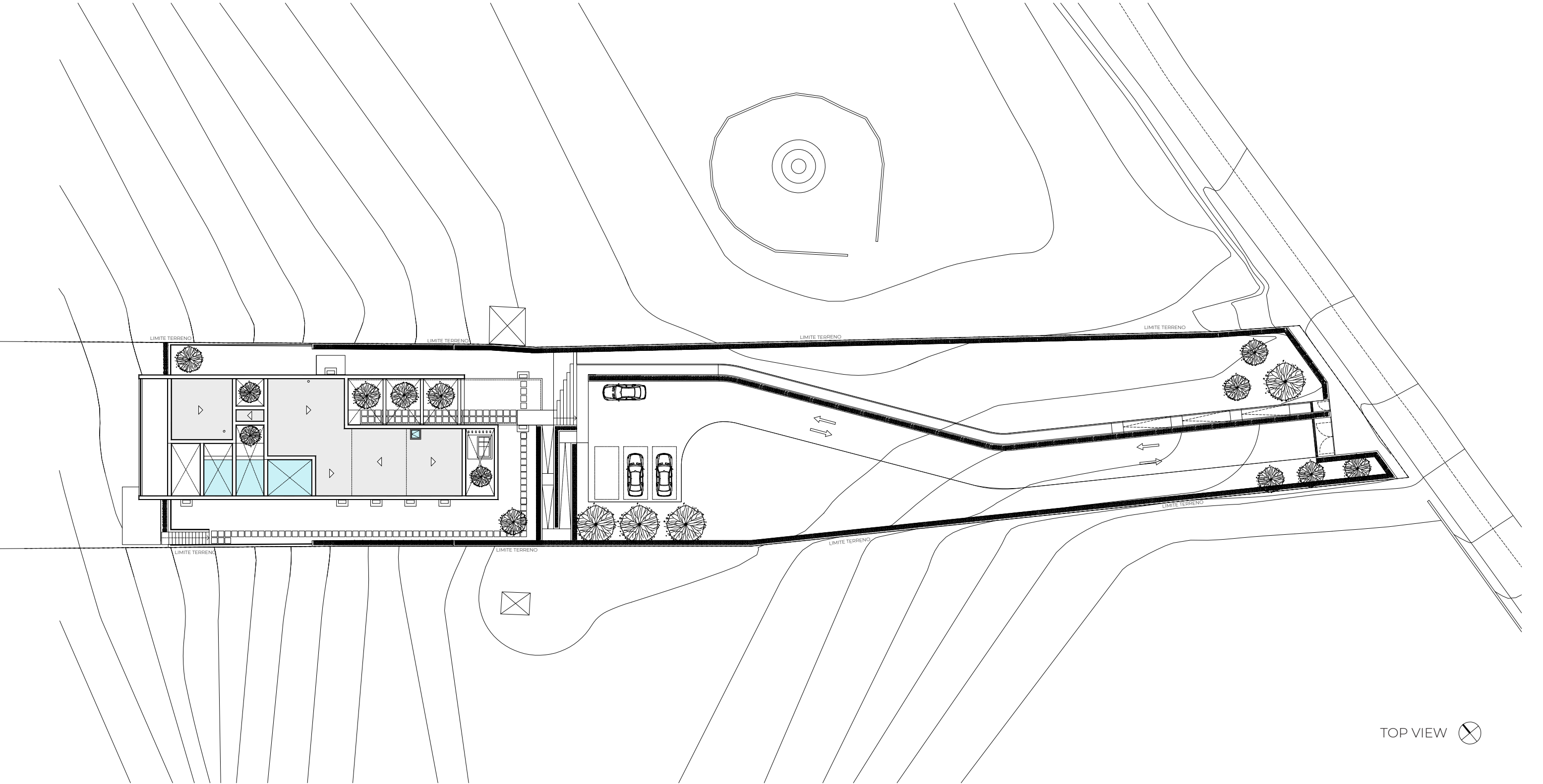




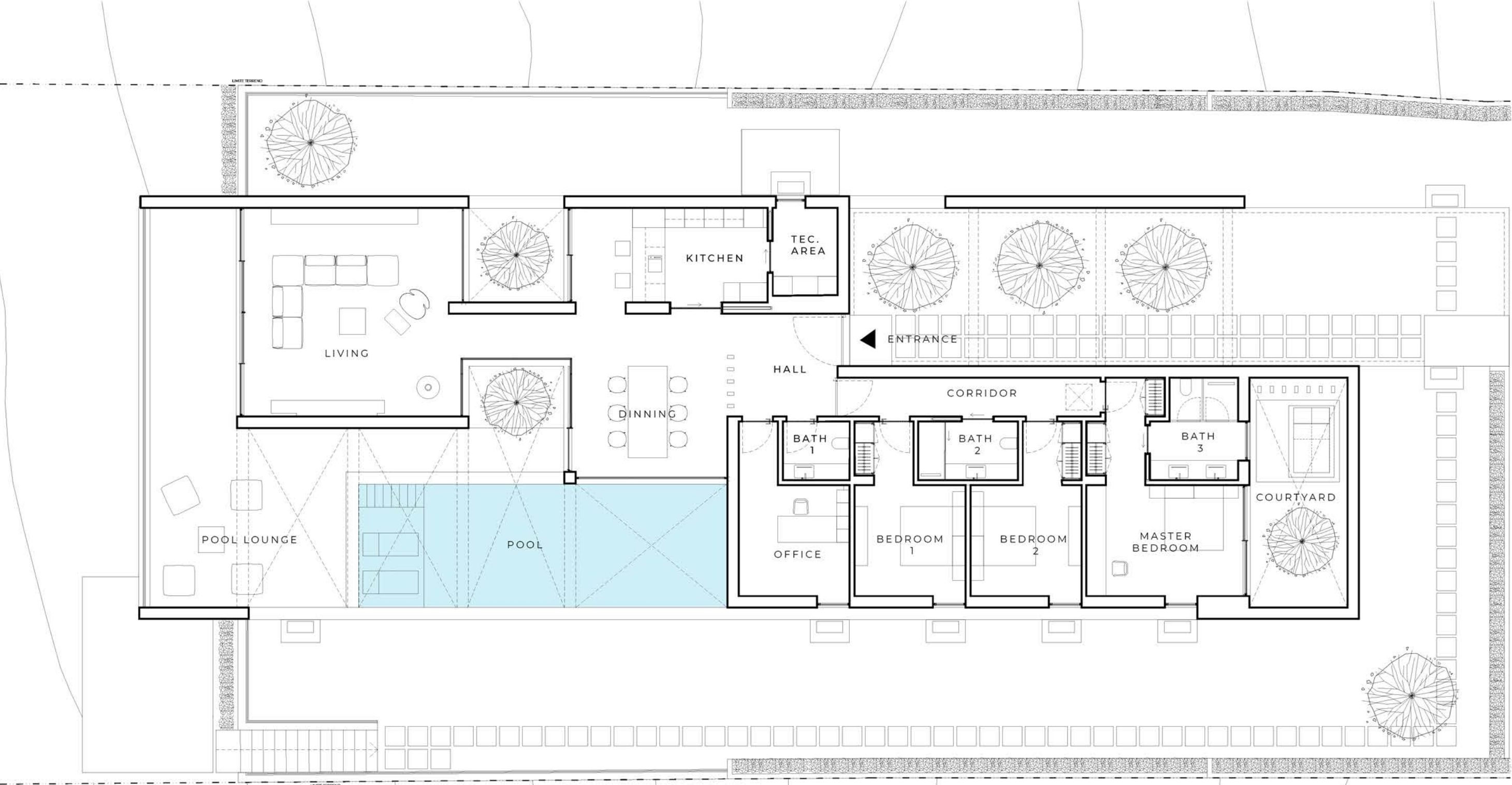


«FROM VOLUME TO SPACE»

The Solrural House represents the perfect fusion of rural tradition and contemporary design. Starting from a simple, pure volume, the house is sculpted through patios and openings that bring light, air, and nature into the interior. Every space has been carefully designed to offer comfort, privacy, and a seamless connection to the outdoors, where the pool and gardens complete the living experience. Minimalist and elegant, the Solrural House is more than just a home — it is a modern retreat set within the natural landscape, created for those who seek quality of life, serenity, and sophistication.

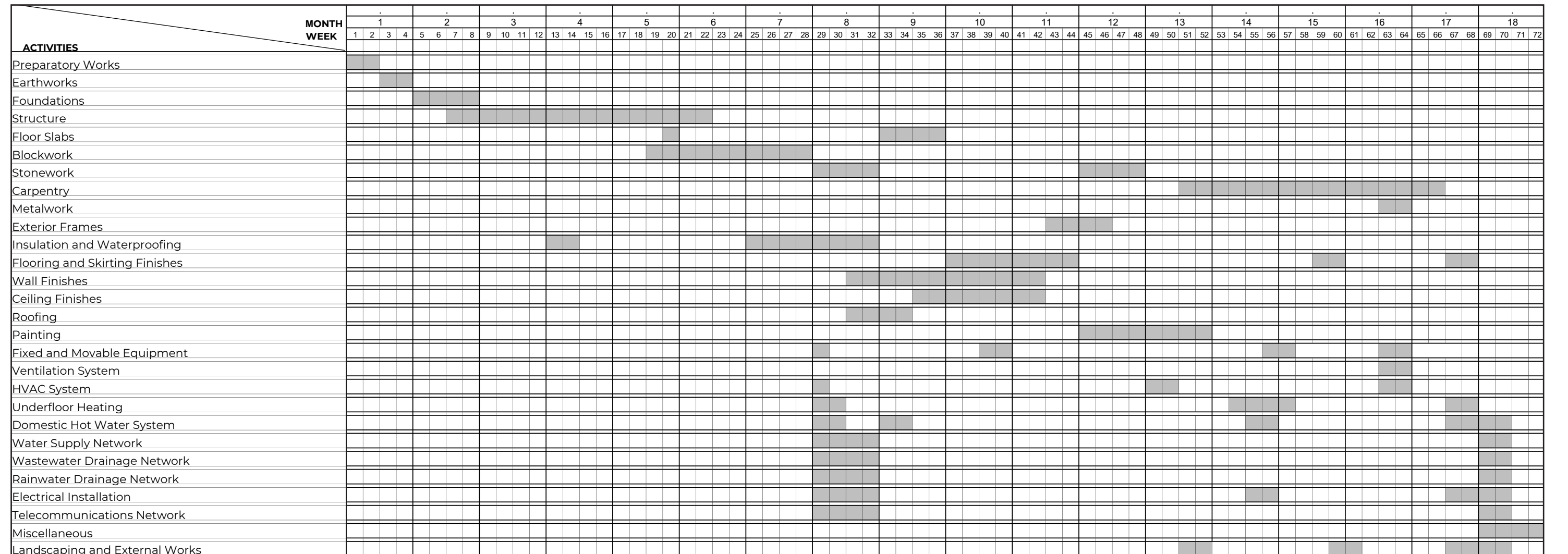


TOP VIEW 



GROUND FLOOR

Estimated Completion: March 2026 ,31





SOUTHWEST VIEW

«SPACE BLENDED WITH GREENERY »

"Courtyards penetrate the central mass of the building and bring natural light to the interiors, creating vibrant and minimal spaces blended with the greenery."



LIVING AREA VIEW



POOL VIEW



MASTER BEDROOM VIEW



WEST VIEW



SOUTH VIEW

«BORN TO DIALOGUE WITH NATURE»

"Raised in a stunning land, LOG House was born to dialogue with nature. The wildness of the place melted with infinity wineries plantation, shapes the skyline and generates a unique area. "



AERIAL VIEW

SITE PICTURES



PICTURE DATE 01/08/2025



PICTURE DATE 01/08/2025



PICTURE DATE 01/08/2025

HOUSE FINISHES

(INTERIOR AND EXTERIOR)

All images are for reference purposes only.
Final materials may vary.

1 FLOORING AND SKIRTING



Porcelain ceramic flooring for the interior | White color



Light grey microcement



Outdoor anti-slip porcelain ceramic tiles | White color



Recessed white ceramic skirting boards

2 WALL FINISHES



Exterior wall rendering with waterproof mortar, smooth troweled finish | White color



Interior walls finished in smooth white spray-applied plaster | White color



Light grey microcement applied to bathroom walls

3 CEILING FINISHES



Suspended ceilings in plasterboard with metal substructure | Painted on White



False ceiling recesses and shadow gaps

4 CARPENTRY



Interior doors in white matte lacquer (Vicalma type), with stainless steel fittings



Built-in wardrobes with white lacquered doors and white laminated interiors



Custom kitchen and laundry cabinetry in white lacquer or thermolaminate



Lacquered white vertical framing and trims

5 STONework



Thresholds, window sills, and coping in Moleanos limestone



Exterior steps and stair treads in Moleanos limestone with waterproof sealant



Kitchen and bathroom countertops in Silestone Miami White

HOUSE FINISHES

(INTERIOR AND EXTERIOR)

All images are for reference
purposes only.
Final materials may vary.

6 EXTERIOR WINDOWS & DOORS



Aluminum frames in white
matte lacquer finish
(EURO 2000 system)

7 GLASS ELEMENTS AND PARTITIONS



Tempered glass shower
enclosures (DIAMANTE series)



Tempered glass railings on
balconies with minimalist
base fixing



Custom glass divider for
master suite



Frameless wall mirrors in
bathrooms

8 SANITARY FIXTURES AND FITTINGS



First-quality sanitaryware by
SANITANA
(GLAM series)



Concealed cisterns and flush
plates by OLI



Wall-mounted bathroom vani-
ties in white matte lacquer



Single-lever mixer taps by OFA
(SLIM series)



First-quality sanitaryware by
SANITANA
(HALO series)

9 SWIMMING POOL



Interior finish in rein-
forced membrane liner
(plain color)



Decorative waterfall

10 OPTIONAL EXTRAS (BUILDING)



MITSUBISHI Ecodan DUO Heat
Pump (alternative to Vaillant)



Domusfocus Glazed 2.90 sus-
pended fireplace



Outdoor jacuzzi Model: SPA
WEEKEND 330/2L

OUTDOORS &
LANDSCAPE FINISHES

All images are for reference
purposes only.
Final materials may vary.

11
OUTDOOR
SURFACING



Grey concrete paving slabs
(60 x 40 x 6 cm)



Interlocking "Holanda" con-
crete block paving in entrance
areas



Reinforced lawn grids (VER-
DASCA type)



Porcelain ceramic tiling on the
barbecue terrace

12
WALL AND FENCING



Masonry boundary walls, ren-
dered and painted, capped
with Moleanos limestone



Side fencing in treated wood
posts and "net mesh" galva-
nized wire

13
GATE AND
TECHNICAL ACCESS



Pedestrian gate in white lac-
quered aluminum with electric
lock



Automated driveway gate with
dual-leaf aluminum structure

14
OPTIONAL
LANDSCAPE EXTRAS



Olive Trees
(Decorative Planting):



Natural lawn turf around the
house perimeter



Perimeter hedging for privacy
and enclosure around the
property

COMPLETION DATE

March 31 ,2026

Visit for more informations

AI-transformations.com

WASO + ALT
| ARCHITECTURE | | PROMOTER |