



David Remland
Broker Associate
5820 N Federal Hwy
Boca Raton FL 33487
(561) 809-8610
david@davidremland.ai



BASE MEMBERSHIP:

Social Family or Individual \$18,040.22

ADD-ON MEMBERSHIPS (not applicable unless accompanied by Base Social Membership)

Racquet Family: \$1,835.05

*Sports Individual: \$1,369.60

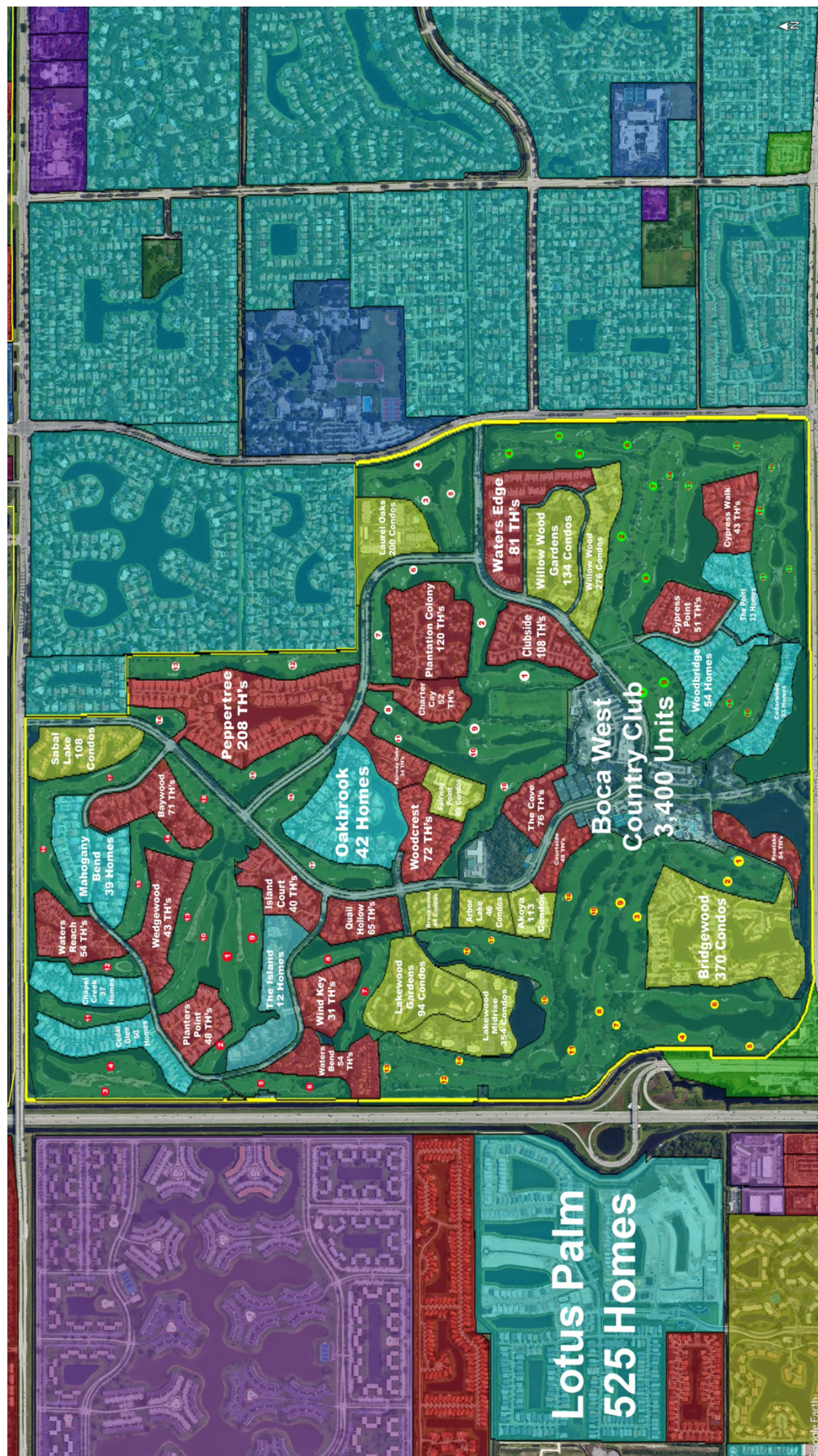
**Golf Family: \$5,077.15

Individual: \$3,734.30

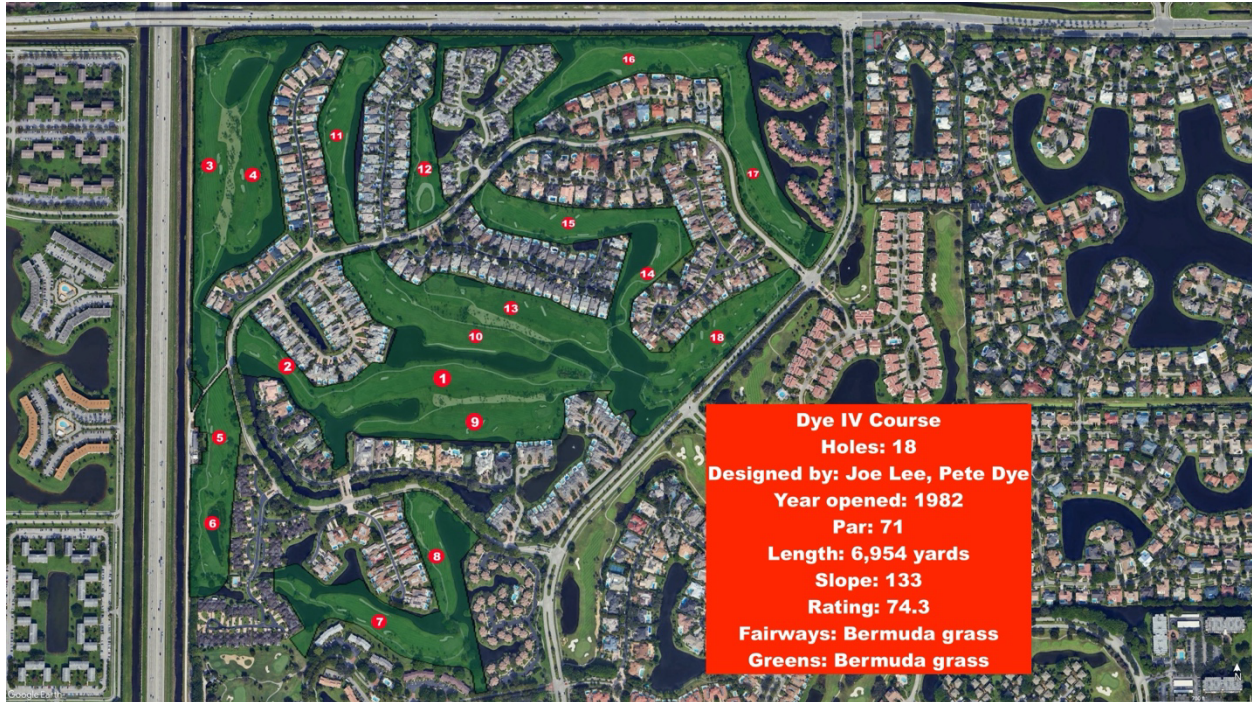
Above Dues and Fees Include 7% Sales Tax

(561) 488-6934

Email: membership@bocawestcc.org



Dye IV Course



Fazio II Course



RE/MAX
SERVICES

David Remland
(561) 809-8610
david@davidremland.ai

Palmer I Course



Palmer III Course



***This is to inform you that the information provided here is intended for general knowledge and should not be solely relied on. Please consult with the country club membership committee for specific pricing related to your situation.