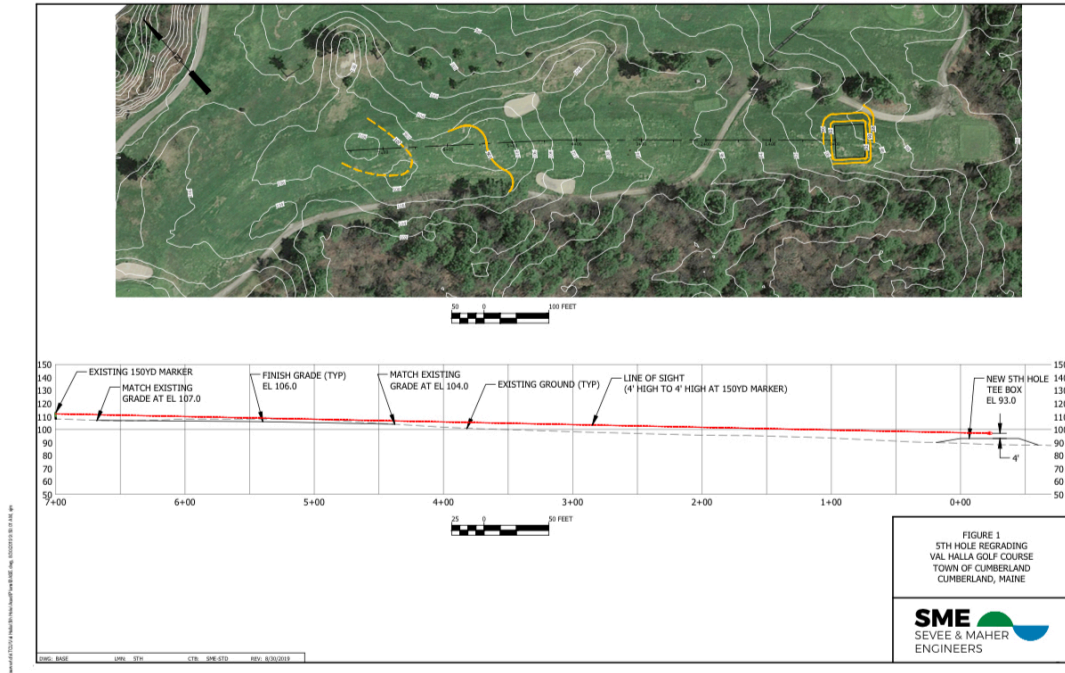
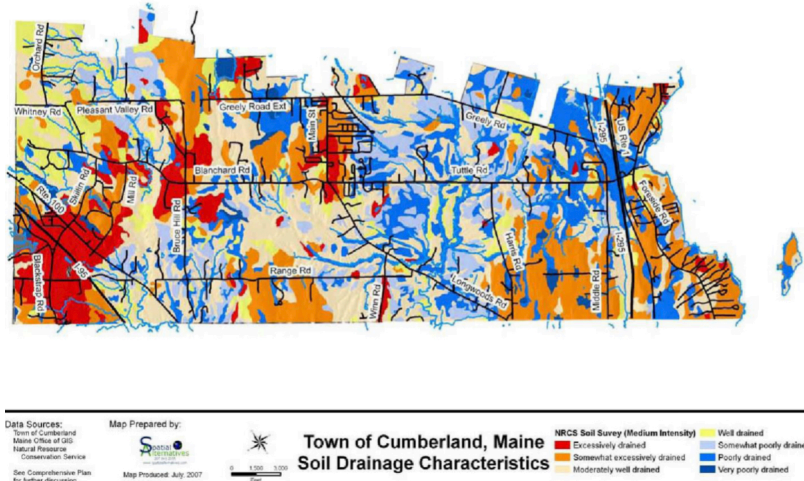


Facility Adoption of Planning, Design & Construction BMP's

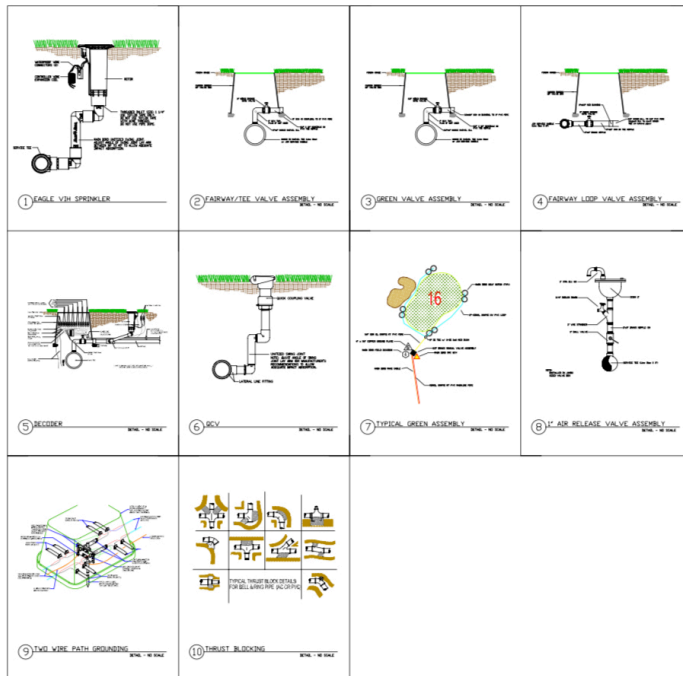
Careful planning is always done prior to any project or renovation commencing at Val Halla. Concept plans and design drawings are always a starting point, with professional drawings being rendered when appropriate.



Environmental impacts are considered and great care is taken to prevent erosion and protect groundwater resources, wildlife and natural landscapes. When working near streams, water bodies and sloped areas, silt fence is used to prevent freshwater contamination. Bare soil is finish graded, prepared and then seeded and mulched (unless sodded) in a timely fashion to prevent further erosion and run off.



Installation and construction methods are finalized and explicitly outlined to ensure procedures are done appropriately, efficiently and to minimize disturbance.



VAL HALLA
GOLF COURSE
Cumberland, Maine

CITY OF
CUMBERLAND
MAINE
290 Tuttle Road
Cumberland, Maine
p (207) 828.5559
f (207) 828.2214

DATE: 07.09.08
SCALE: NO SCALE
SHEET: 11.2

Seed variety is carefully selected, using a native blend to match the surrounding environment or when not making a naturalized area, seed is extensively evaluated and chosen for specific characteristics, i.e., nutritional requirements, drought tolerance, winter hardiness, disease resistance, etc. In the past, when a single variety was not adequate, a custom blend of multiple varieties has been used. While phosphorus free fertilizers are usually used on established turf, specialty starter fertilizers containing phosphorus are always used when establishing turf. This helps to ensure germinated seed establishes and roots quickly, further reducing the potential for run off and erosion.

SEED RESEARCH OF OREGON
The germination of ideas

FEATURES

- Superior turf quality
- Highly competitive against Poa annua
- Excellent winter color with no purpling
- Enhanced Dollar Spot resistance
- Bright, dark green color
- Vigorous, uniform, moderately dense growth
- Heat tolerance
- Uses: Ideal for greens, tees, and fairways

BENEFITS

- Reduced fungicide use
- Versatile for use on greens, tees and fairways
- Improved Brown Patch resistance
- High performance all year around
- Reduced maintenance costs

SEEDING RATES

- Seeds/lb: 6,000,000
- Seed/lb: 13,228,000
- New turf: 1-1.5 lb/1,000 sq ft
- 45-65 lb/acre
- 5-7.5 gr/m²
- 50-75 kg/hectare
- Overseeding/Interseeding: 2-3 lb/1,000 sq ft
- 90-120 lb/acre
- 10-15 gr/m²
- 100-150 kg/hectare

ESTABLISHMENT

- Germination: 3-5 days (6-10 in cooler weather)
- First mowing: approximately 21 days, depending on usage
- First limited use: 4-8 weeks, depending on conditions

007
CREEPING BENTGRASS

007 Creeping Bentgrass (experimental 'DSB') is an advanced generation creeping bentgrass variety developed by the New Jersey Agricultural Experiment Station (Rutgers University) working in cooperation with Richard Hurley, Ph.D.

007 creeping bentgrass has a broad genetic base developed using twenty four parent plants, including plants identified from the varieties L-91 and Southshore. Additional clones were collected from older greens on high stress golf courses in the northeast USA. This improved variety is well adapted to any U.S. and overseas areas where creeping bentgrass is being utilized for golf course greens, tees and fairways.

Uses

Recommended uses for 007 creeping bentgrass include seeding or sodding on new and renovated golf course putting greens, tees, and fairways. It can be used as well as in overseeding conversions on greens planted to older, poor performing varieties that need to be updated. This creeping bentgrass variety adapts well for low mowing on greens, as well as for reduced fungicide management on fairways and tees. Enhanced Dollar Spot resistance and superior turf quality make this variety the perfect choice for all levels of golf course projects, especially those located in stressful environments - 007 is incorporated into the Dominator and Dominant blends.

All individual parental clones of creeping bentgrass used in the development of 007 were selected for improved Dollar Spot resistance, bright dark green leaf color, excellent winter color with no purpling and a vigorous, uniform, moderately dense growth habit. 007 is the standard for superior golf greens, tees and fairways.

SUPER BENTS

Seed Research of Oregon 541-757-2663 | 541-309-2640(fax) www.sroseed.com

VAL HALLA FAIRWAY MIX

	PURE SEED	GERMIN- ATION	TEST DATE
Futura 3000 Ryegrass Blend			
Fiesta 4 Perennial Ryegrass	8.52%	90%	3/08
Sunshine 2 Perennial Ryegrass	7.92%	90%	3/08
Blazer 4 Perennial Ryegrass	7.79%	90%	3/08
Moonshadow Bluegrass Blend			
Blue Velvet Kentucky Bluegrass	12.13%	85%	4/08
Moonshadow Leap Kentucky Bluegrass	12.09%	85%	4/08
America Kentucky Bluegrass	10.38%	85%	4/08
Victory II Chewings Fescue	9.85%	85%	1/08
Jasper Red Fescue	14.78%	85%	1/08
Transist Ryegrass	14.94%	90%	7/08

OTHER INGREDIENTS:
OTHER CROP SEED: 0.43%
INERT MATTER: 1.14%
WEED SEED: 0.04%

OREGON GROWN
NET WT 50 POUNDS

TOM IRWIN, INC. TURFSEED 800-582-5959
11 A STREET., BURLINGTON MA 01803